

PASTORAL STYLE

样板房——田园风格

深圳市创扬文化传播有限公司 编



图书在版编目 (CIP) 数据

样板房——田园风格/深圳市创扬文化传播有限公司 编.

—武汉: 华中科技大学出版社, 2010.3

ISBN 978-7-5609-5998-6

I. 样… II. 深… III. 住宅—室内装饰—建筑设计—图集 IV. TU241-64

中国版本图书馆CIP数据核字 (2010) 第024119号

样板房——田园风格

深圳市创扬文化传播有限公司 编

出版发行: 华中科技大学出版社 (中国·武汉)

地 址: 武汉市珞喻路1037号 (邮编: 430074)

出 版 人: 阮海洪

责任编辑: 孔慧丽

装帧设计: 刘 丹

文字编辑: 王 琪

责任监印: 张正林

印 刷: 利丰雅高印刷 (深圳) 有限公司

开 本: 965mm × 1270mm 1/16

印 张: 18

字 数: 144千字

版 次: 2010年3月第1版

印 次: 2010年3月第1次印刷

书 号: ISBN 978-7-5609-5998-6/TU · 775

定 价: 236.00元 (US\$59)

销售电话: (010) 64155566 (兼传真), (022) 60266199 (兼传真)

网 址: www.hustpas.com

(本书若有印装质量问题, 请向出版社发行科调换)

PASTORAL STYLE

样板房——田园风格

设计·施工·软装·配饰·案例

Preface

People engaged in the design industry always bury a wish deep in their hearts: be innovative. Design style can be copied but thoughts and spirits can't be replaced. In the modern fast-pace life, pastoral style should also go hand in hand with time to absorb the original natural essences and add some new elements, leading to a brand new interpretation and expression.

In the era of diversified integration, it's unnecessary to position a space as some style anymore. Design is like making a painting, which can only be judged as beautiful or not as there's no right or wrong. You can boldly use various colors and river can also be pink as long as you like it. A bird can fly high into the sky with its wings while human's imagination is the wings given by the heaven. Life will be more free because of the existence of our imagination.

In any space where people move about, there's nothing without an aesthetic, from a button to a broad square, from a handle of kitchen cabinet to a grand door... beauty favors people who is good at discovering it and I really enjoy the process of choosing and designing a work.

Simplicity gets to complication and then returns from its pinnacle to simplicity, which shows a simple philosophy point and also reveals the highest realm that non-movement beats movement. Complicating a simple thing is what we usually do, but simplifying a complicated thing is a creation. In such an era, talks about none decoration are obviously against the whole world; however, the simple and warm feeling free from any extra decoration is exactly the ultimate charm about the pastoral style. What we need to do is just simplify and modernize the pastoral style.

Hope my design is like air which may fade away from people's memory but people can't live without it.

Chen Yu

Chenyu Interior Design Studio
Nov.11th,2009, Fuzhou

序言

做设计的人心里总是埋藏着一个愿望，那就是能创新。设计风格可以复制，思想和精神却无法替代。在现代快节奏生活中，田园风格也应该与时俱进，汲取原有的自然精髓，注入些许新的元素之后，又是一种新的诠释，新的表情。

多元融合的时代，已经无需再给空间定位某种风格。设计有如作画一般，只有好看不好看，没有对与错。你可以大胆地使用各种颜色，河流亦可以是粉色，只要你喜欢。小鸟乘着翅膀才能飞向高空，人类的想像力就是上苍赋予的翅膀，因想像力的存在，生命更加自由。

在人们活动的任何空间，没有一样东西不包含审美，从一颗纽扣到一个开阔的广场，从一只橱柜的拉手到一扇宏伟的大门……美丽偏爱善于发现的人，我很享受作品设计选择的过程。

初简至繁，繁盛归简，体现了朴素的哲学观点，也揭示了“无招胜有招”的至高境界。把简单的东西复杂化，是我们常常做的事，但将复杂的东西变简单，则是一种创造。在这个时代谈“不装饰”显然和整个世界唱反调，然而无需装饰的朴素感和温馨感是田园风格最具魅力的所在，我们需要做的只是把田园风格简单化、时尚化。

希望我的设计能宛如空气，让人淡忘却绝然不能离开！



陈禹

陈禹空间设计研究室
2009年11月11日于福州

The Space Where a Soul is at Rest

Nowadays, pastoral isn't really something new.

I think pastoral is a time-space which is natural, leisurely, carefree and unrestrained.

Only in a free time-space can a soul be healthy, stay and rest on. Such a time-space doesn't exist in a metropolitan. That's why the souls of city dwellers are floating, restless, unhealthy and unhappy.

Actually, beautiful pastoral is rarely abused or contaminated by city people. Not because they don't want it, but they haven't been able to do it yet.

Pastoral's beauty lies in the inner contained under her appearance. Like those women who aren't pretty and coquettish but with a light makeup look enduring and stand the test of long lasting time, her advantage lies in this kind of beauty is more approachable and identified with.

Pastoral doesn't equal to rural, in the eyes of modern people, she has less modernity but more originality, and also less inflexibility but more freedom.

What is pastoral? No matter how excellently the pictures and texts mixed with various adjectives go for elaborated descriptions, in my eyes, it's nothing but being simple and plain. It has nothing to do with a style; it's just a life attitude.

Escape from a city, climb some mountains, chop down a few trees, build up a hut, cultivate a piece of land, and plant flowers or vegetables whenever you want, drink cups of wine in a happy mood, play on a swing, make yourself a pot of coffee, listen to birds singing, watch sunrise and sunset, go fishing during rain and burn up fireplace during snow...

Wake up, wake up, and stop daydreaming!

Feikong
Feikong Design Studio

序言

灵魂栖息的空间

这年头，田园实在算不上是一个新鲜词了。

我以为：田园就是一个时空，一个逍遥洒脱、自由自在的时空。灵魂只有在自由的时空里才是健康的，才能驻足，才能栖息。这样的时空在大都市里是没有的。因此，城里人的灵魂是漂浮的，是焦躁的，是不健康、不快乐的。

田园其实很美，城里人还鲜有浸淫。不是不想，而是还没来得及。

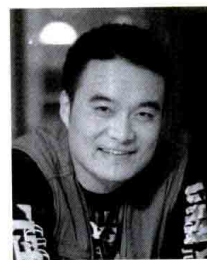
田园的美，在于蕴藏在她外表容颜下的内在。如同那些并非妖冶艳丽，略施粉黛却很耐看的女人，她们的优点在于，这种美更具亲和力，更有认同感。

田园并非乡下，只是在现代人眼中，她少了些现代，多了些原始，但也少了些刻板，多了些随意。

什么是田园，所谓田园风格，任你图文并茂，夹杂各种各样形容词来形容半天，在我看来，不过是简单、朴素。跟风格无关，仅仅是一种生活态度。

逃离城市，翻几座山，砍几棵树，搭个房子，开垦一片地，想种花就种花，想种菜就种菜；高兴了喝着小酒，荡着秋千，煮着咖啡，听鸟儿唱歌，看太阳升起来又落下去；下雨的时候去钓钓鱼，下雪的时候生起火炉……

醒醒，醒醒，别做梦了！



非空
非空设计工作室

contents

目录

Blue China 006
青瓷

Green Crystal 014
青瓷

Lipai 022
立派

Lingrui 030
领睿

Oriental Intoxication 038
沉醉东方

Ripples of Time 048
时光的涟漪

Metropolitan Village 058
都市乡村

Fragrant Sweet Osmanthus Flower
and Green Flavor 064
桂香翠沁

Ivy Vine 074
常青藤

Mediterranean "Blue Mountain" 082
地中海“蓝山”

Colorful World 090
花花世界

Yuelu Mountain Love • Eternal Years 098
麓山恋·永恒的岁月

Hangzhou Red Gate Garden 104
杭州红门家园

Hangzhou Sunshine Huacheng 110
杭州阳光华城

Shenye New Seashore(1) 114
深业新岸线(一)

Prefecture beside Mountain 122
依山郡

Grand Tower over Clouds(1) 128
云顶翠峰(一)

Meilingjing City - Blue Strawberry 134
美林青城——蓝草莓

The Show Flat for Shantou Starlit Court 142
汕头星光华庭样板房

Shenye New Seashore(2) 150
深业新岸线(二)

Grand Tower over Clouds(2) 156
云顶翠峰(二)

Honey Village Two 160
香蜜二村

Morning of the Outskirts in Paris 166
巴黎郊外的早晨

Simple European Countryside 174
简简的欧式田园

Rongxin Span 178
融信西班牙

Yosemite 184
优山美地

Leisurely Graceful American Mix & Match Style 188
悠闲雅致的美式混搭风格

Guofuhuating - Savoury and Mellow Bruce 194
国富华庭——香醇布鲁斯

Residential Building of CIFI Left Seashore 198
旭辉左海岸住宅

A Little Calme in the Bustle 202
喧嚣中的一丝淡定

Elegant House 206
雅致之家

BOBO City 212
BOBO城

Palm Beach Villa 216
棕榈滩别墅

Wild Field 222
阔界领域

Rayli Feel 226
瑞丽风情

Fairy Tale Forest 234
童话森林

Home in the Mountain and Water 242
山水中的家园

Fragrant and Bright Hinterland 246
腹地香朗

Chengdu Backyard Garden 252
成都后花园

Room of Leisure and Ease 258
逸生居

Fuchun Mountain Qiu Residence 262
富春山居豪宅

Lost in the Retro after Time 268
迷惘在时光之后的复古

Tuscany 274
托斯卡纳

Splendid Villa #29 280
世锦园29#

Blue China 青瓷



Company: Chenyu Interior Design Studio

Designer: Chenyu

Project Location: Fuzhou

Total Built Area: 114 m²

Main Materials: ash wooden flooring, latex paint, hand-made tile

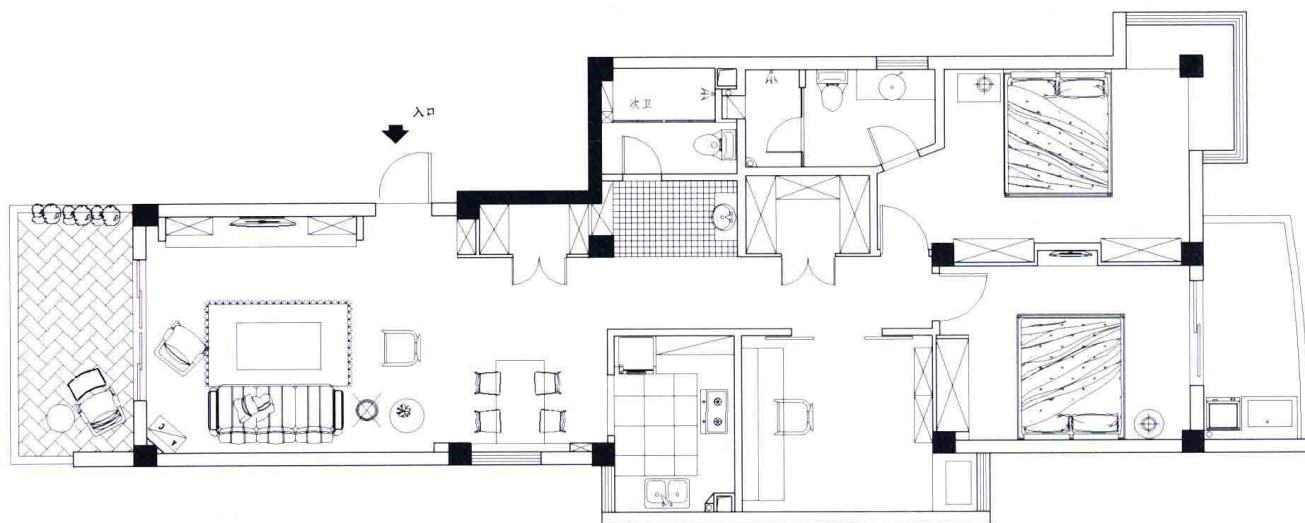
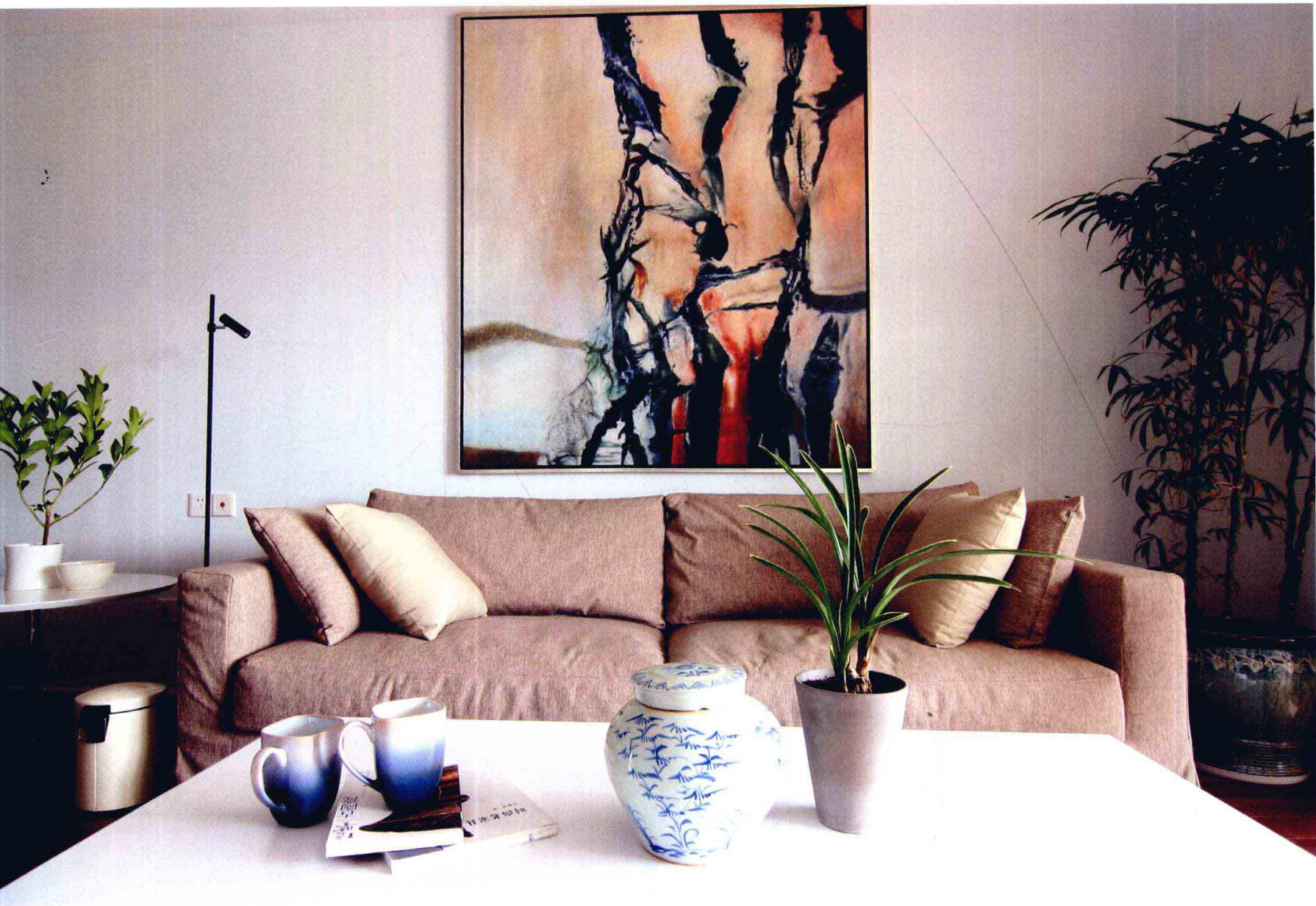
设计单位: 陈禹空间设计研究室

设计师: 陈禹

项目地点: 福州

建筑面积: 114平方米

主要材料: 白蜡木地板、ICI乳胶漆、工砖







In this case, clean, tidy and simple methods are used to make people feel comfortable and warm. In the sitting room, the French window is designed to allow the sunshine outside to sprinkle as freely as possible and the soft sofa comforts the tired heart. Stepping on the flooring made of solid wood, people feel at ease. Camouflage painting on the wall of bedroom attracts people's attention immediately once entering the room. Besides, one corridor extended from the sitting room leads to the outdoor to let people enjoy the world outside.



本案设计采用干净、简洁的手法，让人感觉舒适、温馨。客厅落地窗的设计，可以让外面的阳光尽情地挥洒，柔软的沙发为疲劳的心提供了舒适感。地面使用实木地板，人踩在上面会很舒服、安心。卧室的墙面绘着迷彩，走进卧室就可以欣赏到美丽的画面。此外，客厅里面有一个走廊可以通向室外，能够让人随时领略到外面的世界。







Green Crystal 青楚



Company: Chenyu Interior Design Studio

Designer: Chenyu

Project Location: the commercial estates of Gold Mountain & Blue Water, Fuzhou

Total Built Area: 117 m²

Main Materials: oak wood veneer, latex paint, Furen laminated flooring, Laoye lighting

设计单位: 陈禹空间设计研究室

设计师: 陈禹

项目地点: 福州金山碧水

建筑面积: 117平方米

主要材料: 橡木饰面板、ICI乳胶漆、福人金刚板、老夜灯具

