



茶

CHINESE LEISURE

中国式休闲

Teahouse

地



图书在版编目 (CIP) 数据

茶楼: 中国式休闲/深圳市创扬文化传播有限公司 编.

—武汉: 华中科技大学出版社, 2010.3

ISBN 978-7-5609-5265-9

I. 茶… II. 深… III. 茶馆—室内装饰—建筑设计—中国—图集 IV. TU247.3-64

中国版本图书馆CIP数据核字 (2009) 第049539号

茶楼: 中国式休闲

深圳市创扬文化传播有限公司 编

出版发行: 华中科技大学出版社 (中国·武汉)

地 址: 武汉市珞喻路1037号 (邮编: 430074)

出 版 人: 阮海洪

责任编辑: 吴亚兰

书籍设计: 黄子平 刘 丹

责任监印: 张正林

印 刷: 深圳市彩美印刷有限公司

开 本: 965mm × 1270 mm 1/16

印 张: 12.5

字 数: 112千字

版 次: 2010年3月第1版

印 次: 2010年4月第2次印刷

书 号: ISBN 978-7-5609-5265-9/TU · 561

定 价: 198.00 (US\$49.00)

投稿热线: (010) 64155588-8000 hzjztg@163.com

销售电话: (010) 64155566 (兼传真), (022) 60266199 (兼传真)

网 址: www.hustpas.com; www.hustp.com

(本书若有印装质量问题, 请向出版社发行科调换)

序言

China is the native place of tea and tea culture is definitely the treasure gem in its long history of five thousand years. The reason why tea culture can stand prolonged time without a decline is that drinking tea not only benefits our human body a lot but also is a graceful artistic enjoyment.

As teahouse is the important location for passing on and carrying on tea culture, its design, compared to other interior designs, must pay more attention to creating the atmosphere of tea culture than merely beautifying the environment. Inputting into a space too many immutable or invariable symbols only leads to an aesthetic fatigue. Therefore, the designer should abandon a simple duplication of Chinese ancient architecture but add his own understanding and perception of Chinese tea culture, which requires him not only to have a good command of tea ceremony but also know the romantic charms of modern culture and have a thorough knowledge of the charisma of both traditional tea culture and modern culture to combine, merge them well. A representative trendy building conserving profound traditional culture will not be realized unless the designer thinks from a modern people's angle, uses the most fashionable and edgy way of expression to display traditional Chinese tea culture and integrates the jumping elements.

A flourishing teahouse can make tea savoring become a fashion, a trend and tea culture grow into a kind of Chinese culture popular around the world.

中国是茶的故乡，茶文化是中华五千年历史的瑰宝。茶文化之所以经久不衰，不仅因为喝茶对人体有很多好处，更是因为品茶本身就是一种极优雅的艺术享受。

茶馆作为茶文化传承的重要场地。对比其他的室内设计作品，茶馆设计要注意的不仅仅是环境的美化，更需要注意的是茶文化氛围的营造。在一个空间里放入太多一成不变的符号，会让人产生一种审美疲劳。所以，茶楼设计应摒弃对中国古建筑的简单复制，加入设计师本人对中式茶文化的理解及感悟，这就要求设计者不仅要精通茶道，还需要了解现代文化神韵，将传统茶文化与现代文化神韵通融贯通，从现代人的思想角度出发，用最时尚前卫的表现手法，来体现传统中式茶文化，加之跳跃的元素，才能打造出一个蕴含着深厚传统文化时尚代表性建筑。

茶馆的繁荣，可以让品茗成为一种时尚，一种趋势，茶文化也会发展成风靡全世界的中式文化。



洪腾空间设计事务所 洪斌

Bin Hong, Hongteng Space Design Office



CONTENTS

目录



Sky Water Teahouse	006 天之水茶楼
Spring and Autumn Teahouse	012 春秋茶楼
Dawn Hut Teahouse, Park Road	022 公园道晓庐茶舍
Tranquil Teahouse	030 静茶坊
“Zi Chayuan” Health Teahouse	038 “紫茶园” 养生茶道坊
Beijing Gengxiang Teahouse	046 北京更香茶楼
Laoshe Teahouse	056 老舍茶馆
Canglang Pavilion Chaxiang Institute	062 沧浪阁茶香会馆
Beijing Boyuanfang Teahouse	070 北京博元舫茶楼
Yunnan Dragonwish Flagship Shop	078 云南龙图阁

Kunming Tea Inkstone Luck Teahouse	086 昆明茶砚缘茶馆
Yuqing Teahouse	092 余庆会馆
Qingfeng Renjia Teahouse	100 清风人家
The Teahouse of Taste & Cultivation Room	108 品养斋茶馆
Huilan Liuyun Art Teahouse	114 祎兰流韵艺术茶楼
Painting Space	118 画意空间
Lan Teahouse	128 兰茶坊
Hongfu Teahouse	138 红福茶馆
Water Town Teahouse	146 水乡茶楼
Ziteng Teahouse	152 紫藤茶馆
Dashanyuan Teahouse	160 大山源茶庄
Han Teahouse	166 函馆
Wuhan Sinking Fragrance Pu'er Teahouse	172 武汉沉香楼普洱茶馆
Chagenyuan Teahouse	178 茶根缘会所
Mingrenju Art Teahouse	182 茗人居茶艺馆
Tea Art Institute	188 茶艺馆
Lehuo Teahouse	194 乐活茶馆



天之水茶楼



Sky Water Teahouse

Designer: Kang Yanbu

Company: Fuzhou Yuanbu Art Decoration Co., Ltd

Project Location: Fuzhou's Business Center

Total Built Area: 120 m²

Main Materials: dyed fir wood, rustic tile, silver lacquer painted decal

设计师: 康延补

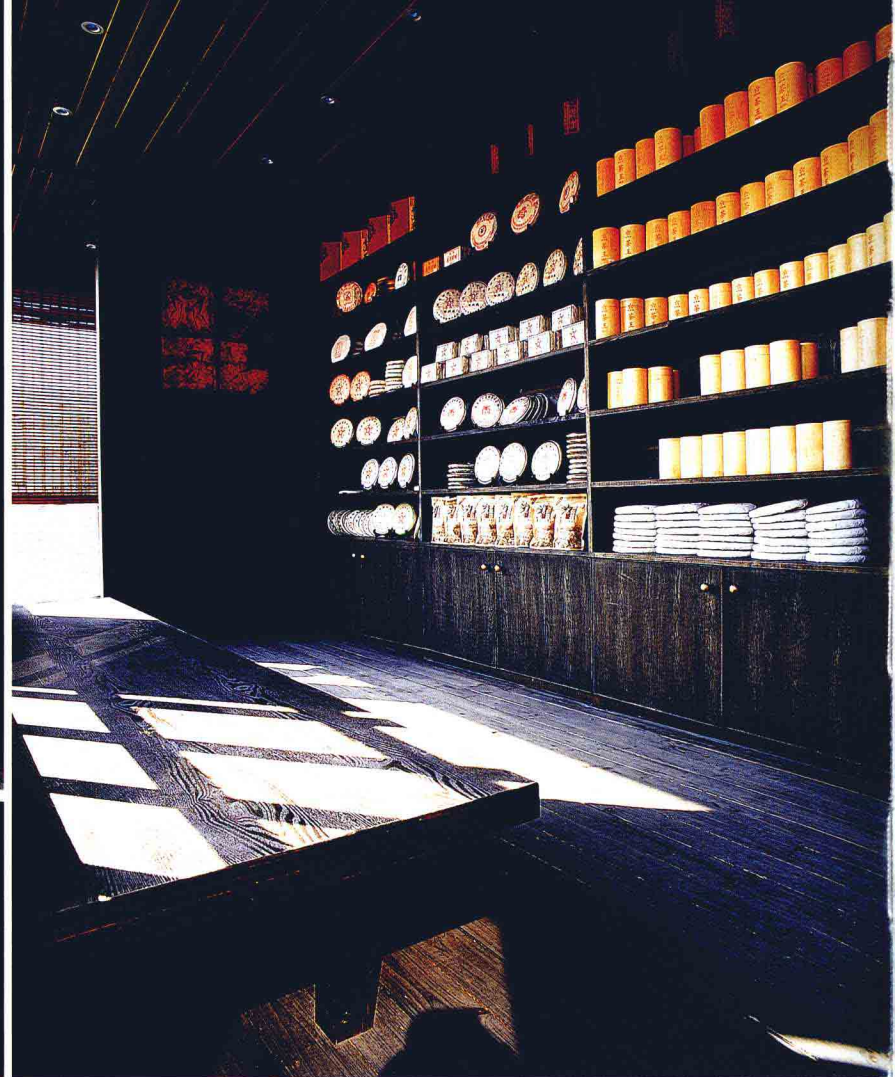
设计单位: 福州远步艺术装饰有限公司

项目地点: 福州市商业中心

建筑面积: 120平方米

主要材料: 杉木板染色、仿古砖、银漆彩绘





This teahouse deals in Pu'er tea , so the designer specially made a study at the tea producing area-Yunnan Lincang where Va nationality live and found Va people worship black, considering it beautiful and enjoy wearing silver ornaments. Thus, the designer set black as the basic tone dotted with silver to build up a spatial soul with the colors and lay the context for this teahouse.

Then, the designer studied the finished form and preservation of Pu'er tea and found quite a few similar teahouses don't store the tea properly due to poor ventilation for the packed teacake and low storage efficiency, resulting in bad forms. So the way of placing teacake on standing racks came into

being, i.e. the teacake is separated at an interval of one cake's thickness by wooden strips to ensure the breathing and ventilated clearance between the teacakes, which also displays the whole new shelf with good visual effect.

The materials are mainly woods and partially iron sheets, very simple, and parts of the wall keep the original black "culture stone" to be consistent with the materials and colors used in the design.

When the sunshine passes through wood lattice window, enters this black house and dances with the steaming mist from boiling Pu'er tea above the tables & chairs, black is more than being heavy, it shows some refined delicacy.



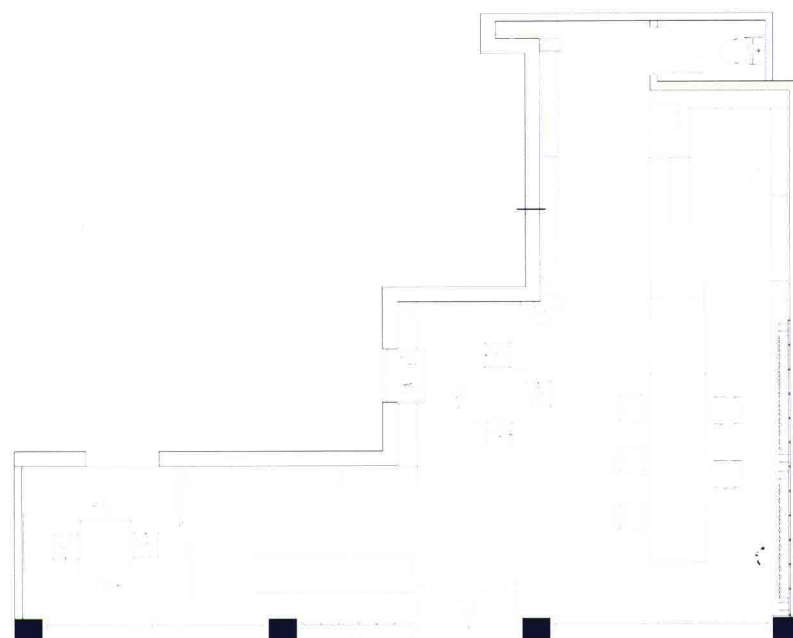
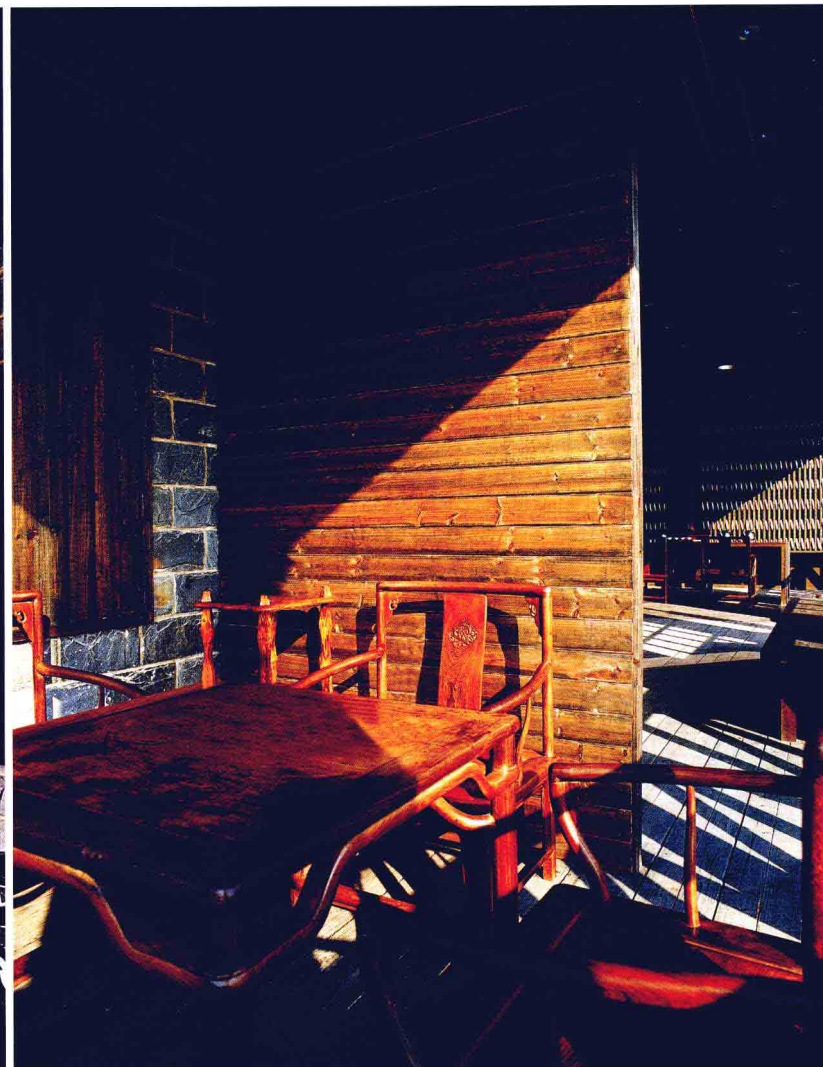


这是一间普洱茶庄。设计师为此专门对茶庄的茶叶产地——云南临沧地区的佤族聚居地做了一番了解，发现佤族人崇尚黑色，以黑为美，并喜配银饰品。于是设计师将黑色作为这间茶庄的基色，以银色点缀其间，从色调上塑造了空间灵魂，铺设了茶庄的文脉。

之后设计师又对普洱茶的成品形态以及存放方式做了研究，发现目前许多同类茶庄存放普洱茶的方式欠妥，原因是不利于茶饼的通风且存放效率低，形式感差。于是以竖格搁置茶饼的做法就出炉了，就是按一块茶饼的厚度以木条作间隔放置茶饼，保证每块茶饼之间的通风透气。这种做法同时让货架呈现出新的面貌，有很好的视觉效果。

在材质方面，以木料和部分铁皮为主材，十分精简，部分墙面保留原有的青色“文化石”，与设计使用的材料以及色彩协调一致。

当阳光透过木格子窗门进入这间黑色屋子，与普洱茶水蒸腾的雾气舞弄于桌椅上方，黑色就不只是一种厚重，还透着一些秀气。





春秋茶楼



Spring and Autumn Teahouse

Designer: Zhang Yinghui

Company: Dashidai Design Consultant Co.,Ltd

Project Location: 4th floor, Junchuang Internation, Zhonghua Street, Shijiazhuang city

Total Built Area: 700 m²

Photographer: Zhang Yinghui

设 计 师: 张迎辉

设计单位: 大石代设计咨询有限公司

项目地址: 石家庄市中华大街军创国际4层

建筑面积: 700平方米

摄 影 师: 张迎辉





Spring and Autumn Teahouse is located in the fourth floor of Junchuang building in downtown. Building environment creates a dilemma to create a teahouse atmosphere. Designer adapts to local conditions, filters noisy downtown, raises a secluded "yard" and creates a tea culture via courtyard concept, which forms a sharp contrast to building and busy street and brings the "snatching a little leisure from the rush of business" to modern urbanite. Tea house conveys traditional Chinese residential building structure via the form of "three courtyards", courtyard covering "room", "room" covering "house", "room" and "room" orderly placed and surrounding these three scenic courtyards, namely "first courtyard" sea of gate, "second courtyard" stage, "third courtyard" dry landscape, a step a scene, a courtyard a scenario. Modern bright red chandelier emerges as the main character to the courtyard and brings a bit warm and soft to the gray brick outside the wall, and green plants in the corner make room even fresher. In addition, the slight tea fragrance haunts "courtyard", which makes people set aside downtown impetuous, and wander among the spiritual world of the tea culture and the oriental building.



春秋茶楼位于闹市区军创大厦的四层，建筑现状给茶楼氛围的营造出了一个难题。设计师因地制宜，过滤嘈杂的闹市，浮出僻静的“小院”，以院落概念营造茶文化氛围，与大厦、闹市形成一个鲜明的对比，给现代都市人一个“忙里偷闲”的机会。

茶楼以“三进院”的形式演绎着中国传统民居的建筑格局，院中有“房”，“房”内有“屋”，“房”与“房”错落有致，围合着三个情节小院：“一院”门海，“二院”戏台，“三院”枯山水。一步一景，一院一情节。现代风格的大红吊灯让院里有了主角，让屋外的灰砖墙添了几分亲切与柔和，角落里的绿色植物让空间更显清新，另外，淡淡的茶香萦绕“院”中，让人抛开闹市浮躁，徜徉在茶文化和东方建筑的精神世界之中。

