

音樂技術學習叢刊

五指練習曲

什密特(作品16)

[鋼琴]

音樂出版社

·一九五五·

音樂技術學習叢刊

五指練習曲

什密特(作品16)

音樂出版社

·一九五五·

Schmitt
Five fingers exercises

本書根據 Carl Fischer, Inc. 版影印

五指練習曲

〔作品十六〕

原作者 [法] 什密特

*

書號：京 103 開本：787×1092 耗 1/10

頁數：16 印張：3 1/5 正譜：27 面

一九五五年二月第一版北京第一次印刷

印數：1-3,060 冊

定價五千七百圓

北京市書刊出版業營業許可證出字第〇六三號

音樂出版社出版

北京東單溝沿頭三三號

新華書店總經售

*

五指練習曲

使手指獨立不倚和動作均衡的練習

什密特, 作品一六

每一練習至少須彈十至十五次, 省去末了的四分音符, 直到最後一次才彈出來。先單獨用右手彈, 再單獨用左手彈, 最後兩手合起來, 兩手要平穩而安靜。開始時要彈得很慢, 等到手指彈得靈活而有力時, 再逐漸增加速度。

每一練習最好用各種不同的調彈奏, 指法照舊。



11. 12.

13. 14.

15. 16.

17.

18.

19.

20. 21.

22. 23.



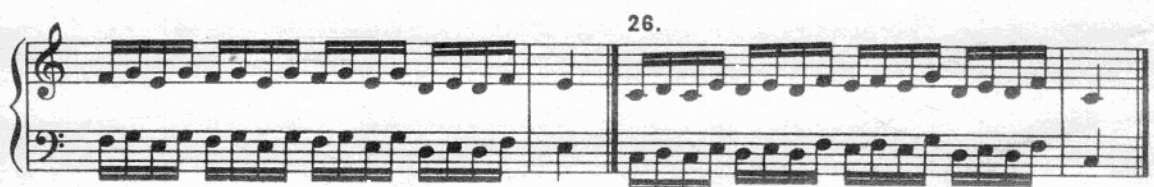
24.



25.



26.



27. 28.



29. 30.



31. 32.



33. 34. 35.

This system contains measures 33, 34, and 35. Each measure is divided into two parts by a vertical bar line. The first part of each measure features a continuous eighth-note pattern in the right hand, while the left hand provides a steady accompaniment of eighth notes. The second part of each measure consists of a single quarter note in the right hand, followed by a quarter rest in the left hand.

36. 37. 38.

This system contains measures 36, 37, and 38. The notation is identical to the previous system, with eighth-note patterns in the right hand and quarter notes in the left hand.

39. 40. 41.

This system contains measures 39, 40, and 41. The notation is identical to the previous systems, maintaining the eighth-note accompaniment and quarter-note melody.

42. 43. 44.

This system contains measures 42, 43, and 44. The notation is identical to the previous systems, with eighth-note accompaniment and quarter-note melody.

45. 46. 47.

This system contains measures 45, 46, and 47. The notation is identical to the previous systems, with eighth-note accompaniment and quarter-note melody.

48. 49. 50.

This system contains measures 48, 49, and 50. The notation is identical to the previous systems, with eighth-note accompaniment and quarter-note melody.

51. 52. 53.

Musical notation for measures 51, 52, and 53. Each measure is divided into two systems, each with a treble and bass staff. The music features a steady eighth-note accompaniment in the bass and a melody in the treble.

54. 55. 56.

Musical notation for measures 54, 55, and 56. Each measure is divided into two systems, each with a treble and bass staff. The music features a steady eighth-note accompaniment in the bass and a melody in the treble.

57. 58. 59.

Musical notation for measures 57, 58, and 59. Each measure is divided into two systems, each with a treble and bass staff. The music features a steady eighth-note accompaniment in the bass and a melody in the treble.

60. 61. 62.

Musical notation for measures 60, 61, and 62. Each measure is divided into two systems, each with a treble and bass staff. The music features a steady eighth-note accompaniment in the bass and a melody in the treble.

63. 64. 65.

Musical notation for measures 63, 64, and 65. Each measure is divided into two systems, each with a treble and bass staff. The music features a steady eighth-note accompaniment in the bass and a melody in the treble.

66. 67. 68.

Musical notation for measures 66, 67, and 68. Each measure is divided into two systems, each with a treble and bass staff. The music features a steady eighth-note accompaniment in the bass and a melody in the treble.

69. 70. 71.

Measures 69, 70, and 71. Each measure consists of a treble clef staff with a melody of eighth notes and a bass clef staff with a rhythmic accompaniment of eighth notes. Measure 69 starts with a treble clef and a key signature of one flat. Measure 70 continues the melody. Measure 71 ends with a double bar line.

72. 73. 74.

Measures 72, 73, and 74. Similar to the previous system, each measure has a treble clef staff with a melody and a bass clef staff with a rhythmic accompaniment. Measure 72 continues the melody. Measure 74 ends with a double bar line.

75. 76. 77.

Measures 75, 76, and 77. The treble clef staff continues with eighth-note patterns. Measure 75 starts with a treble clef. Measure 77 ends with a double bar line.

78. 79. 80.

Measures 78, 79, and 80. The treble clef staff continues with eighth-note patterns. Measure 78 starts with a treble clef. Measure 80 ends with a double bar line.

81. 82. 83.

Measures 81, 82, and 83. The treble clef staff continues with eighth-note patterns. Measure 81 starts with a treble clef. Measure 83 ends with a double bar line.

84. 85. 86.

Measures 84, 85, and 86. The treble clef staff continues with eighth-note patterns. Measure 84 starts with a treble clef. Measure 86 ends with a double bar line.

87. 88. 89.

Handwritten musical notation for measures 87, 88, and 89. Each measure is divided into two systems: a treble clef system and a bass clef system. The music consists of continuous eighth-note patterns in both hands.

90. 91. 92.

Handwritten musical notation for measures 90, 91, and 92. Each measure is divided into two systems: a treble clef system and a bass clef system. The music consists of continuous eighth-note patterns in both hands.

93. 94. 95.

Handwritten musical notation for measures 93, 94, and 95. Each measure is divided into two systems: a treble clef system and a bass clef system. The music consists of continuous eighth-note patterns in both hands.

96. 97. 98.

Handwritten musical notation for measures 96, 97, and 98. Each measure is divided into two systems: a treble clef system and a bass clef system. The music consists of continuous eighth-note patterns in both hands.

99. 100. 101.

Handwritten musical notation for measures 99, 100, and 101. Each measure is divided into two systems: a treble clef system and a bass clef system. The music consists of continuous eighth-note patterns in both hands.

102. 103. 104.

Handwritten musical notation for measures 102, 103, and 104. Each measure is divided into two systems: a treble clef system and a bass clef system. The music consists of continuous eighth-note patterns in both hands.

105. 106. 107.

108. 109. 110.

111.* 112. 113. 114.

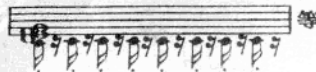
115. 116. 117. 118.

119.** 120. 121.

122. 123. 124.

* 第111至118也可照這樣彈:

** 第119至127也可斷奏(staccato).



125. 126. 127.

Three measures of piano music. Each measure consists of a treble clef staff and a bass clef staff. The music features a complex, rhythmic pattern with many beamed notes, characteristic of a technical exercise or a specific style of piano music.

128. 129. 130.

Three measures of piano music. Each measure consists of a treble clef staff and a bass clef staff. The music features a complex, rhythmic pattern with many beamed notes, characteristic of a technical exercise or a specific style of piano music.

131. 132. 133.

Three measures of piano music. Each measure consists of a treble clef staff and a bass clef staff. The music features a complex, rhythmic pattern with many beamed notes, characteristic of a technical exercise or a specific style of piano music.

134. 135. 136.

Three measures of piano music. Each measure consists of a treble clef staff and a bass clef staff. The music features a complex, rhythmic pattern with many beamed notes, characteristic of a technical exercise or a specific style of piano music.

137. 138. 139.

Three measures of piano music. Each measure consists of a treble clef staff and a bass clef staff. The music features a complex, rhythmic pattern with many beamed notes, characteristic of a technical exercise or a specific style of piano music.

140. 141. 142.

Three measures of piano music. Each measure consists of a treble clef staff and a bass clef staff. The music features a complex, rhythmic pattern with many beamed notes, characteristic of a technical exercise or a specific style of piano music.

143. 144. 145.

146. 147. 148.

149. 150. 151.

152. 153. 154.

155. 156. 157.

158. 159. 160.*

* 第160至169也可照這樣彈：

161. 162. 163.

164. 165. 166.

167. 168. 169.

下列各練習須繼續上行和下行，擴展到鍵盤上的全部音域。

170.

171.

172. 173. 174.

175. 176. 177.

178. 179. 180.

181. 182. 183.

184. 185. 186.

187. 188. 189.

190. 191. 192.

Exercise 190: Treble clef starts with 5 4 3 2 1, bass clef with 1 2 3 4 5. Exercise 191: Treble clef starts with 1 2 3 4 5, bass clef with 1 2 3 4 5. Exercise 192: Treble clef starts with 1 2 3 4 5, bass clef with 1 2 3 4 5.

193. 194. 195.

Exercise 193: Treble clef starts with 5 4 3 2 1, bass clef with 1 2 3 4 5. Exercise 194: Treble clef starts with 5 4 3 2 1, bass clef with 1 2 3 4 5. Exercise 195: Treble clef starts with 1 2 3 4 5, bass clef with 1 2 3 4 5.

196. 197. 198.

Exercise 196: Treble clef starts with 3 2 1, bass clef with 3 2 1. Exercise 197: Treble clef starts with 3 2 1, bass clef with 3 2 1. Exercise 198: Treble clef starts with 3 2 1, bass clef with 3 2 1.

199. 200. 201.

Exercise 199: Treble clef starts with 5 4 3 2 1, bass clef with 1 2 3 4 5. Exercise 200: Treble clef starts with 5 4 3 2 1, bass clef with 1 2 3 4 5. Exercise 201: Treble clef starts with 5 4 3 2 1, bass clef with 1 2 3 4 5.

202. 203. 204.

Exercise 202: Treble clef starts with 5 4 3 2 1, bass clef with 1 2 3 4 5. Exercise 203: Treble clef starts with 1 2 3 4 5, bass clef with 1 2 3 4 5. Exercise 204: Treble clef starts with 1 2 3 4 5, bass clef with 1 2 3 4 5.

205.

Exercise 205: Treble clef starts with 5 4 3 2 1, bass clef with 1 2 3 4 5.

206. 207.

208.

209. 210.

211.

212.

213.