



职业教育城市轨道交通专业规划教材

# 城市轨道交通

# 专业英语

李建民 主编



机械工业出版社  
CHINA MACHINE PRESS

职业教育城市轨道交通专业规划教材

# 城市轨道交通专业英语

主 编 李建民  
参 编 刘 峥 王丽红 王大文  
主 审 贾俊波



机械工业出版社

本书的结构体系是：第1单元介绍了站务、客运服务等方面的交通基础知识，同时选编了与城市轨道交通相关的英语科技文章及说明文；第2单元选编了城市轨道交通车辆和控制系统基本知识方面的英语科技文章及说明文，主要讲解了ATO\ATP\ATC等知识；第3单元选编了城市轨道交通供电和电气设备方面的英语科技文章及说明文，主要讲解了各种供电方法及其构成。

本书选文短小精悍，难易适中，切合城市轨道交通实际，便于组合和教学。每篇文章包括阅读、字词和词组、重点句法、翻译注释四个部分。

本书可作为高等职业教育城市轨道交通专业教材，也可作为中等职业教育城市轨道交通专业教材，还可作为城市轨道交通从业人员的参考读物。

### 图书在版编目(CIP)数据

城市轨道交通专业英语/李建民主编. —北京：机械工业出版社，2010.1

职业教育城市轨道交通专业规划教材

ISBN 978-7-111-28737-7

I. 城… II. 李… III. 城市铁路—英语—职业教育—教材 IV. H31

中国版本图书馆CIP数据核字(2010)第009230号

机械工业出版社(北京市百万庄大街22号 邮政编码100037)

策划编辑：曹新宇 宋学敏 责任编辑：曹新宇

封面设计：王伟光 责任印制：李妍

北京振兴源印务有限公司印刷

2010年3月第1版第1次印刷

184mm×260mm·6.5印张·2插页·159千字

0001-3000册

标准书号：ISBN 978-7-111-28737-7

定价：15.00元

凡购本书，如有缺页、倒页、脱页，由本社发行部调换

电话服务

网络服务

社服务中心：(010) 88361066

门户网：<http://www.cmpbook.com>

销售一部：(010) 68326294

教材网：<http://www.cmpedu.com>

销售二部：(010) 88379649

读者服务部：(010) 68993821

封面防伪标均为盗版

# 职业教育城市轨道交通专业规划教材

## 编写委员会

主 任：李晓村

编 委：（按姓氏笔画排序）

王大文	牛红霞	牛凯兰	边国兴	卢桂云	李 力
华 平	阳 东	李建民	刘 峥	李建国	连苏宁
张建国	周淑玉	杨瑞柱	徐 坚	唐春林	秦菊枝
柴鹏飞	贾毓杰	韩增盛	裴瑞江		

秘 书：宋学敏 曹新宇

# 出版说明

目前我国正在进行着有史以来规模最大的城市轨道交通建设。城市轨道交通的高速发展，带来了对城市轨道交通专业人才的巨大需求。巨大的城市轨道交通人才需求为职业教育城市轨道交通专业的发展带来了良好的契机。目前国内开设城市轨道交通专业的院校正逐年增多，但是适合于职业教育的教材却很少，特别是专门为职业教育量身设计的、注重实际操作技能及管理技能的教材几乎没有。机械工业出版社根据教育部大力发展职业教育的要求，为促进职业教育城市轨道交通专业教学的交流与推广，推动职业教育城市轨道交通教材建设，培养符合企业实际需求的应用型、综合性人才，特组织国内开设城市轨道交通专业的院校及优秀教师编写了此套教材。

为了做好教材的编写工作，机械工业出版社特别成立了由著名专家组成的教材编写委员会。这些专家对城市轨道交通专业教学作了深入细致的调查研究，对教材编写提出了许多建设性意见，并慎重地对每一本教材一审再审，确保教材的高质量，并对教材的教学思想和方法的先进性、科学性严格把关。这套教材出版后，我们将根据各职业院校的教学计划，举办如何高效使用教材的教师培训，及时地将其推荐给各职业院校选用。希望职业院校师生在使用教材后及时反馈意见并提出建议，使我们能更好地为教学改革服务。

机械工业出版社

# 前 言

进入 20 世纪 90 年代后,我国城市轨道交通迅速发展,特别是在一些大城市,更是发展迅猛。随着我国城市化的进一步发展,交通问题日益严重。作为解决这一问题最有效的方法之一,城市轨道交通将迎来大发展时期。同时随着改革开放的进一步深入,我国的国际化程度进一步加强,大量的外国人到我国旅游、学习、工作和生活,作为城市窗口之一的城市轨道交通是一个重要的交汇点。此外,由于城市轨道交通所用设备很多是进口设备,需要和国外的一些公司进行技术交流和沟通,这就要求技术人员必须掌握一定的英语知识。因此,急需培养既具有城市轨道交通专业知识,又懂得一些英语知识的工作人员,《城市轨道交通专业英语》就是在这种需求下组织编写的。

本书以“注重实际应用”为编写原则,以高职高专院校城市轨道交通专业的培养要求为依据,以满足实际工作要求为目标,以培养学生的实际工作能力为目的。

本书是根据城市轨道交通的特色内容编写的,内容主要包括基本语法、电气工程、车辆、线路、站务、客运服务等方面的英语基础知识。书中选编了一些英语科技论文、说明文以及一些特殊工作场景英语,同时结合学生实际,在学习专业英语知识的同时,对英语基础知识进行强化,达到既学习专业英语,又提高日常英语能力的目的,二者互相促进,共同提高。

本书选文短小精悍,难易适中,切合城市轨道交通实际,便于组合和教学。

本书的结构体系是:第 1 单元编写了站务、客运服务等方面的交通基础知识,同时选编了与城市轨道交通相关的英语科技文章及说明文;第 2 单元选编了城市轨道交通车辆和控制系统基本知识方面的英语科技文章及说明文,主要讲解了 ATO\ATP\ATC 等知识;第 3 单元选编了城市轨道交通供电和电气设备方面的英语科技文章及说明文,主要讲解了各种供电方法及其构成。每篇文章包括阅读、字词和词组、重点句法、翻译注释四个部分。

本书由郑州铁路职业技术学院李建民教授担任主编。具体编写分工如下:李建民教授编写了第 2 单元第 3 课、第 4 课、第 3 单元第 1 课至第 3 课;南京铁道职业技术学院刘峰编写了第 1 单元第 1 课至第 3 课;郑州铁路职业技术学院王大文副教授编写了第 2 单元第 1 课、第 2 课和第 3 单元第 5 课;郑州铁路职业技术学院王丽红编写了第 1 单元第 4 课、第 5 课和第 3 单元第 4 课。李建民教授统筹整理了全书,并设置了编写格式。新加坡淡马锡理工学院燃料电池应用中心总工程师贾俊波在百忙之中抽出宝贵的时间对本书进行了认真的审阅。

本书的编写得到了多个兄弟学院老师的大力支持,特别是南京铁道职业技术学院李晓村教授,对本书的编写进行了前期的指导和定位,在此一并表示衷心的感谢!

本书的许多内容是编者自己的翻译稿,同时编者对原文的一些地方进行了修改和再说明。由于水平有限,难免出现一些错误,所以诚挚地希望广大教师和读者不吝赐教,以便于今后的改进和提高。

编 著

# 目 录

## 前言

<b>Unit 1 Knowledge of Traffic</b>	<b>1</b>
Lesson 1 Rules & Service	1
Lesson 2 How to Take Train	6
Lesson 3 Station Notice	10
Lesson 4 Metros Look Forward to the 21st Century	15
Lesson 5 Developing Maglev Trains	20
<b>Unit 2 Vehicles and Automatic Control System</b>	<b>25</b>
Lesson 1 ALSTOM-Metropolis™ Metros	25
Lesson 2 ATC	31
Lesson 3 ATP	37
Lesson 4 ATO	46
<b>Unit 3 Power System and Electricity Equipment</b>	<b>58</b>
Lesson 1 London Underground Track	58
Lesson 2 DC 3-Rail Traction System	63
Lesson 3 Overhead Catenary Traction System	74
Lesson 4 Traction Power Supply System	84
Lesson 5 Introduction of Siemens Electrical Products	91
<b>参考文献</b>	<b>98</b>

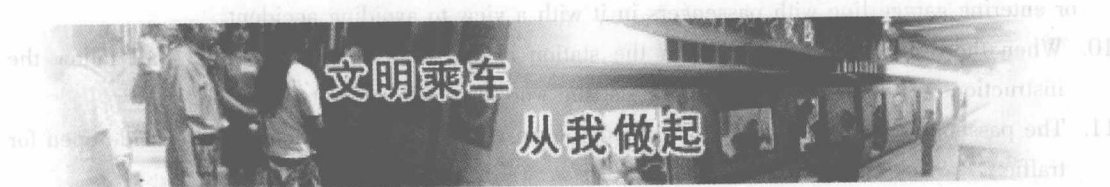


## Unit 1 Knowledge of Traffic

### Lesson 1 Rules & Service

#### Part I Reading

##### Rules of train taking



1. The passenger shall take the subway train with **valid** tickets for the route of the day and enter the station after showing such tickets to the ticket collector voluntarily. ❶ The passenger using **altered**, fake and invalid ticket or the ticket whose validity period has expired or using other person's ticket or certificate shall be dealt with according to the Rules of Using Beijing Subway Ticket.
2. For the object which occupies 0.12m<sup>2</sup> area, the passenger should buy another ticket. Every ticket can cover a child shorter than 1.2 meters and the child shorter than 1.2 meters shall not take the train by himself.
3. The disabled people like the blind or deaf, or those with intellectual disabilities, the elderly with difficulties to move, the pre-school children or the drunk shall have others to accompany them to take the train.
4. It is prohibited to taking the train with hazardous objects that are easy to explode, burn or burn by itself, the poisonous or corrosive object, the object that can kill or wound others (detonator, explosives, firecrackers, gasoline, diesel oil, kerosene, painting, calcium carbide, liquefied gas and all kinds of acid) and the objects that will pollute the subway equipment or station environment.
5. It is prohibited to taking the train with excessively long object (longer than 1.8 meters), cumbersome objects (bike, washing machine, TV set, monitor of desktop computer, refrigerator, compound acoustic equipment, etc), animals or objects that do harm to the cleanness at public places, the moving in the train or the safety of the passengers (like glass

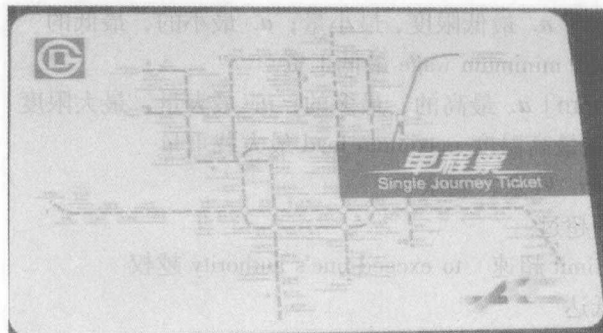


product or fragile glass product) .

6. The uncivilized people who are not in tidy or complete clothes shall not enter the station to take the train.
7. The passenger shall wait for the train behind the yellow line on the platform. It is prohibited to jumping down the platform and cross the guardrail to get into the railroad area to avoid possible dangers. The passenger shall keep themselves in line with the order of the station and the train instead of pushing each other in crowd when getting in or out of the train. When the doors are closed , it is advised not to get in and out of the train in a rush. It is prohibited to leaning against or pushing oneself heavily against the door when the train is operational. It is prohibited to getting in or out of the train at the conjunction part to avoid possible dangers.
8. To take good care of the facilities in the station and train. It is prohibited to touching the operational facilities without prior approval.
9. When the train arrives at the terminus or the passengers are to be cleared due to the breakdown of the train , all the passengers shall get out of the train. The train is prohibited to transferring lines or entering garage line with passengers in it with a view to avoiding accident.
10. When there occurs any accident in the station or the train , the passengers shall follow the instructions of the working staff and assist the working staff to maintain the order.
11. The passengers shall stand at the right side of the auto staircase and leave the left side open for traffic.
12. It is prohibited to smoking , spitting and scattering rubbish in the station or the train so as to keep these places clean.
13. Do not chase others or engage in game-fight with each other in the station or the train.
14. Do not stay or lie long at the platform , hall , exit/entrance or passage. It is prohibited to sitting or lying on the platform at the entrance/exit. It is prohibited to storing objects at hall , exit/entrance. It is prohibited to begging in the station or train. It is prohibited to selling any commodities or distributing published materials in the station or train without prior permission.
15. Please follow the above rules voluntarily. The violator shall be sent to police station if the violation is substantial.

## Ticket Service





1. **One way ticket**: Price RMB 2 yuan for Line1, Line2, Line4, Line10, Line 13, and Line 5.
2. **Money-inside ticket** of “One card through city”: to store an amount of the **integral** times of RMB10 yuan with the **minimum** being RMB10 yuan and the **maximum** being RMB 500 yuan. To pay RMB 20 yuan as security at first buying and the **residue** in card should not **exceed** RMB 1,000 yuan.
3. Time of selling: from the time of starting train service to the time five minutes before the **arrival** of the last train going in the passenger's direction everyday.
4. Place of selling: every station.
5. Dear **passengers**, please pay attention. As there is something wrong with TVM, please buy the tickets at the **ticket office/information desk**. Sorry for the **inconvenience** brought to you.
6. Dear passengers, there are TVM at both sides of the station hall. Please queue up at the TVM to buy the single tickets. If you want to buy the stored-value tickets or charge your tickets, please go to the ticket office/information desk. Children above 1.1m should buy a ticket to enter the station. Thank you for your **cooperation**.
7. Dear passengers, welcome to take Nanjing M **queue up** metro train. You can take the train with single tickets or **stored-value tickets**. ② The single tickets can only be used on the day of **purchase** at that station. It is invalid if overdue. Each stored-value ticket can only be used by one person each time. If you fail to exit the station within 120 minutes, an extra fee of the highest ticket price will be charged when you exit. If you have any questions about the ticket, please ask the ticket office/information desk for help.

## Part II New Words and Expression

1. valid [ˈvælɪd] **a.** 正当的, 有充分根据的, 符合逻辑的  
Do you have valid reasons for your absence? 你的缺席有正当理由吗?
2. alter [ˈɔ:lteɪ] **vt. & vi.** 改变, 更改  
As times alter, men's affections change. 时过境迁。
3. One way ticket 单程票
4. Money-inside ticket of “One card through city” 一卡通储值票
5. integral **a.** 完整的, 整体的, 整数的; **n.** 整数 integral number 整数

6. minimum [ˈmɪnɪmə] *n.* 最低限度, 最小量; *a.* 最小的, 最低的  
minimum value 最小值 minimum wage 最低工资
7. maximum [ˈmæksɪmə] *a.* 最高的, 最多的; *n.* 最大量, 最大限度  
maximum temperature 最高温度 maximum load 最大载重量
8. residue [ˈrezɪdʒu:] *n.* 残余, 剩余物
9. exceed [ɪkˈsi:d] *v.* 超过  
to exceed the speed limit 超速 to exceed one's authority 越权
10. arrival *n.* 到达, 抵达  
The arrival of the train was delayed. 那列火车晚点到达。
11. passenger *n.* 乘客, 旅客; 行人, 过路人  
This is a passenger train, not a goods train. 这是旅客列车, 不是货车。  
The streets are full of passengers. 街上行人熙攘。
12. TVM: Ticket Vending Machine 自动售货机
13. ticket office/information desk 售票/问讯处
14. inconvenience [ˌɪnkənˈvɪnjəns] *n.* 麻烦, 不便  
The snow inconvenienced the holiday travelers. 下雪给旅游度假者带来不便。  
It often causes a lot of inconvenience when buses come late. 公共汽车晚点时, 常常引起许多不便。
15. queue up 排队等候  
Queue up at the box office. 在售票处排队。
16. stored-value ticket 储值票
17. cooperation [kəʊˌɒpəˈreɪʃən] *n.* 合作, 协作  
promote cooperation 促进合作  
Thank you for your cooperation. 感谢你们的合作。
18. purchase [ˈpɜ:tʃəs] *n.*, *v.* 购买  
cash purchase 现购, 现金购买 live on one's purchase 自谋生计, 自找活路 purchase and sale 买卖  
He gave his son some money for the purchase of his school books. 他给他儿子一些钱买课本。  
The new couple spent some money for the purchase of the furniture necessary for their new house. 这对新婚夫妇花费了一些钱购买新房子里必需的家具。

### Part III Notes on the Text

1. The passenger using altered, fake and invalid ticket or the ticket whose validity period has expired or using other person's ticket or certificate shall be dealt with according to the Rules of Using Beijing Subway Ticket.

主语 the passenger, 定语 using altered, fake and invalid ticket or the ticket whose validity period has expired or using other person's ticket or certificate 修饰主语。

2. The single tickets can only be used on the day of purchase at that station. 单程票只能在购

买站进站并于当天使用。句中 be used 为被动语态。

## Part IV Translation

### 规章与服务

#### 乘客须知

1. 乘坐地铁须照章购票、刷卡，接受验票，凭票乘车。对使用伪造、涂改、冒用、过期、无效票证者，依据《北京市地下铁道列车车票使用办法》执行。
2. 携带物品面积超过  $0.12\text{m}^2$  的，需另加购一张同程等额车票。每张车票可免费携带 1.2m 以下儿童一名，不足 1.2m 者不能单独乘车。
3. 失明、失聪、智障等残障人士、行动不便的老人、学龄前儿童及醉酒者，需有人陪同进站乘车。
4. 严禁携带易爆、易燃、自燃有毒、腐蚀性和杀伤性等危险品（如雷管、炸药、鞭炮、汽油、柴油、煤油、油漆、电石、液化气、各种酸类等）以及容易污损地铁设备和站、车环境的物品乘车。
5. 严禁携带超长（1.8m 以上）、笨重（如自行车、洗衣机、电视机、台式电脑显示器、电冰箱、组合音响等）、动物以及妨碍公共卫生、车内通行和乘客安全（如玻璃及易碎玻璃制品）等物品乘车。
6. 衣冠不整等不文明者不能进站乘车。
7. 在站台候车时，须站在黄色安全线以内；严禁跳下站台、翻越护栏进入线路内，以免发生危险。自觉遵守站车秩序，进出车站、上下列车不要拥挤。车门或屏蔽门关闭过程中，禁止强行上下列车。列车开始运行后，禁止挤靠车门。严禁在车厢连接处上下车，以免发生危险。
8. 爱护站、车内各项设施。未经允许，不得擅自触动行车设备。
9. 列车到达终点站或因列车故障清人时，乘客应听从工作人员指挥，全部顺序下车。列车严禁载客转线或进入库线。
10. 地铁站内、车内发生意外或紧急情况时，乘客应听从工作人员指挥，配合维护现场秩序。
11. 搭乘扶梯时，请紧握扶手，靠右站稳，左侧通行。
12. 保持站、车卫生，严禁吸烟、随地吐痰、乱扔废弃物。
13. 禁止在站、车内追逐打闹。
14. 禁止在站台、大厅、出入口、通道久留，禁止在出入口平台上坐卧；禁止在地铁大厅、出入口存放物品；禁止在站、车内行乞；地铁站、车内未经允许禁止兜售各种商品和放宣传品。
15. 请乘客自觉遵守上述各项规定。对违反规定者，视情节轻重移交公安部门处理。

#### 地铁票务

1. 单程车票：票价 2 元，可在北京地铁 1 号线、2 号线、4 号线、10 号线、13 号线及 5 号线使用。

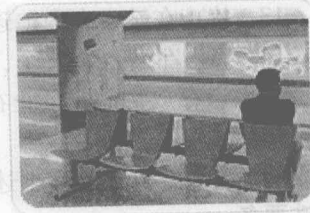
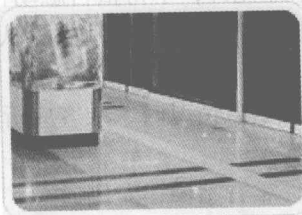
2. 一卡通储值票：每次储值金额为 10 元的整数倍，最低 10 元，最高 500 元，初次购买须支付押金 20 元，卡内余额不得超过 1000 元。
3. 发售时间：每日车站运营时起至乘客乘车方向末班车到达车站前 5 分钟止。
4. 发售地点：各运营车站。
5. 各位乘客请注意，因自动售票机故障，请到售票/问讯处购买车票，不便之处，敬请谅解。
6. 各位乘客，在车站站厅的两端设有自动售票机，购买单程票的乘客请到自动售票机前排队购票。需要购买储值票或充值的乘客，请前往售票/问讯处购买或充值。身高超过 1.1m 的儿童需要购票进站，谢谢合作。
7. 各位乘客，欢迎您乘坐南京地铁，您可以使用单程票或储值票进站乘车。单程票只能在购买站进站并于当天使用，过期无效。每张储值票每次只能供一人使用。如果您进闸后超过 120 分钟仍未出站，出站时将要补交全程最高票价。如果您对车票有任何疑问，可以到车站售票/问讯处查询，我们将竭诚为您服务。

## Lesson 2 How to Take Train

### Part I Reading

#### Waiting the train

1. Choose the correct direction by **guideline**.
2. While waiting the train, passenger should stand within the safety line.
3. Passenger may refer the electronic display for the arrival time of next train.



4. In the station which is **shared** by 2 lines, passenger should pay more attention to the color belt of the train to ensure that correct train will be taken.

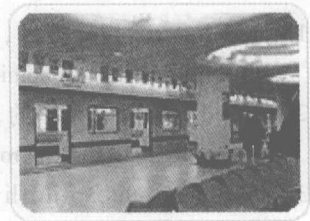
5. After train stopping **absolutely** and the screen door/ train door opening, passenger should follow the principle of “Down first, later on” .
6. When screen door/train door is closing, touching of the screen door/train door is prohibited.

### Getting on the train

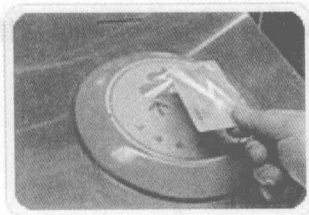
1. Mind the gap between train and platform when passenger get on the train.
2. Try to stand in the middle of vehicle after get on the train, try not to occupy the position near the door.
3. Mind passengers who need help, **provide** them with your seat if necessary.
4. Please keep station and vehicle clean.
5. Don't step on the seat. Never throw anything onto the track.
6. Before train running, warning lights over the door will blink and beeper will beep for 6 to 7 times. Passenger must stand within the safe line at the time.
7. At the rush time, if passenger couldn't get on the train, please waiting the next train. ❶ The longer train stop at the station, the longer passenger would wait.

### Getting off

1. Make a preparation before getting off. Passenger can get the information of next station from radio and electric information board on the train.
2. Don't forget your luggage.
3. Time during train stop at the station is 30 ~ 40s, preparation is necessary at the rush time.



### Exit



1. One-through card user

Like the way entering the gate, One-through card user follows the “right hand” **principal**. Mind the values when exit.

2. One-through ticket user

One-through ticket user following the “right hand” **principal** when exits gate. ❷ The difference between entering gate and exiting gate is that One-through ticket user should insert the ticket into the gate because One-through ticket will be **reclaimed**.

If gate return the One-through ticket back, user should hold the ticket to staff for dealing with.

### 3. Souvenir ticket user

Souvenir ticket user following the “right hand” principal exits gate. Souvenir ticket user inserts the ticket into the gate. After checking the ticket, gate will give the souvenir ticket back to the user. Keep the ticket when user gets out of the gate.

### Leave

Passenger could find the exit of station easily by following the guideline of directive boards.



## Part II New Words and Expression

### 1. guideline *n.* 指导方针, 准则

We laid out the economic guidelines and followed it. 我们制定了经济方针并且遵循它。

### 2. shared [ʃeəd] 共享的, 共用的

A trouble shared is a trouble halved. 两人分担, 困难减半。

### 3. absolutely [ˈæbsəljʊtli] *ad.* 完全地, 绝对地

Lucy is absolutely devoted to her cats. 露西全身心地爱着她的猫。

We're absolutely obedient to the superior. 我们绝对服从上级。

### 4. provide [prəˈvaɪd] *vt. & vi.* 提供, 供给, 供应, *vt.* 规定

The law provides that valuable ancient buildings should be preserved by the government. 法律规定有价值的古代建筑必须由政府来保管。

### 5. principal [ˈprɪnsəpl] *a.* 最重要的, 主要, *n.* 负责人, 校长

Drinking is a principal cause of highway deaths. 酗酒是公路死亡事故的最主要的原因。

He is the principal of this school. 他是该学校的校长。

### 6. souvenir [ˈsuːvənɪə] *n.* 纪念品

The local shopkeepers sell souvenirs to the tourists. 当地的店主向旅游者出售纪念品。

### 7. reclaim [riˈkleɪm] *vt.* 要求收回, 开拓 (荒地), 开垦; 从废料中回收

I have tried to reclaim my money without success. 我没能把钱取回来。

People here are reclaiming land from the sea. 这儿的人们正在填海拓地。

He has invented a new method to reclaim valuable raw materials from industrial waste water. 他发明了一种从工业废水中回收有价值原料的新方法。

## Part III Notes on the Text

1. The longer train stop at the station, the longer passenger would wait.

特殊句型，表示越……越…… 相当于前置强调某两个相关联的事件的关系。

The higher the figure, the greater regard the market has for the company. 这个数字越大，市场就越看好该公司。

The bigger the share, the greater the profits and risks the partner will have. 份额越大，有关合伙人的利润和风险也就越大。

2. The difference between entering gate and exiting gate is that One-through ticket user should insert the ticket into the gate because One-through ticket will be **reclaimed**.

The difference 是主语，is 是系动词，that 引出表语从句，说明二者的差别。

## Part IV Translation

## 乘 车

## 候车

1. 根据指示选择正确的方向。
2. 等车时，乘客应站在安全线以内。
3. 乘客可通过电子显示屏查看下趟地铁到达时间。
4. 在双线地铁站内，乘客应注意地铁车辆的颜色以确保乘坐正确方向的列车。
5. 等列车停稳、车门开启后，乘客应遵循“先下后上”的原则。
6. 当车门关闭时，严禁触摸车门。

## 上车

1. 上车时应注意车身和站台之间的缝隙。
2. 上车后尽量站在列车中间，尽量不要站在车门位置。
3. 注意周围需要帮助的乘客，必要时把座位让给他们。
4. 保持车站和列车整洁。
5. 请勿踩踏座位，禁止向车轨抛扔杂物。
6. 列车起动前，车门上方的警示灯将闪烁鸣叫 6~7 次。此时乘客必须站在安全线内。
7. 高峰时段，如乘客未能赶上车，请等待下一车次。列车在车站停留时间越长，乘客等待的时间就会越长。

## 下车

1. 下车前做好准备。在列车上，乘客可从广播和电子显示屏上得到下一站的信息。
2. 不要忘记随身携带物品。
3. 到站停车时间为 30~40s，高峰时段有必要提前做好准备。

## 出地铁口

1. 交通卡使用者



像进入地铁时一样，乘客应遵循“右手”原则，并注意卡内余额。

## 2. 一次性地铁票乘客

一次性地铁票乘客遵循“右手”原则。与进站时的区别是，乘客应将地铁票插入检票口，因为一次性地铁票需被收回。如果检票口将地铁票退回，乘客应持票找服务人员解决。

## 3. 纪念票乘客

纪念票乘客遵循“右手”原则。乘客将票插入检票口，验票后，票将退回给乘客。乘客出站时保留此票。

## 离开

根据指示牌，乘客很容易找到地铁出口。

# Lesson 3 Station Notice

## Part I Reading

### Into the station

1. Passengers, attention please. As there is something wrong with the enter **strobe** machine, please enter the station at the **guidance** of our staff. ❶ Sorry for the **inconvenience** brought to you.
2. Passengers, heading for Mai Gaoqiao, please walk across the overpass and wait on platform No. 2 opposite.
3. Now it is rather crowded at the station, please take turns to enter the station with tickets in your hands.
4. Good morning, passengers, welcome to Nanjing Metro. We wish you a pleasant journey, and hope you have a nice day!
5. Enjoy the metro time and read the latest information. Dear passengers, good morning! Coordinated management by Nanjing Daily Press Group and Nanjing Metro, the Oriental Guardian Daily News is a daily newspaper delivered free of charge in Nanjing Metro Station. Every morning on weekdays, **Oriental** Guardian Daily News will meet you at the metro station. You can get it at the ticket machine or on the newspaper shelf at every metro station and read it free of charge.

### Running

1. Dear passengers, please take care of your child at the platform. To avoid accidents, no running, chasing and fighting at the platform. Thank you for your cooperation.
2. The train heading for the direction of Olympic Sport Center is coming, please wait behind the safety line and don't stand close to the door. Mind the gap between the train and platform when getting aboard.
3. Dear passengers, in order to keep the cleanness, please do not eat or drink at the station in the