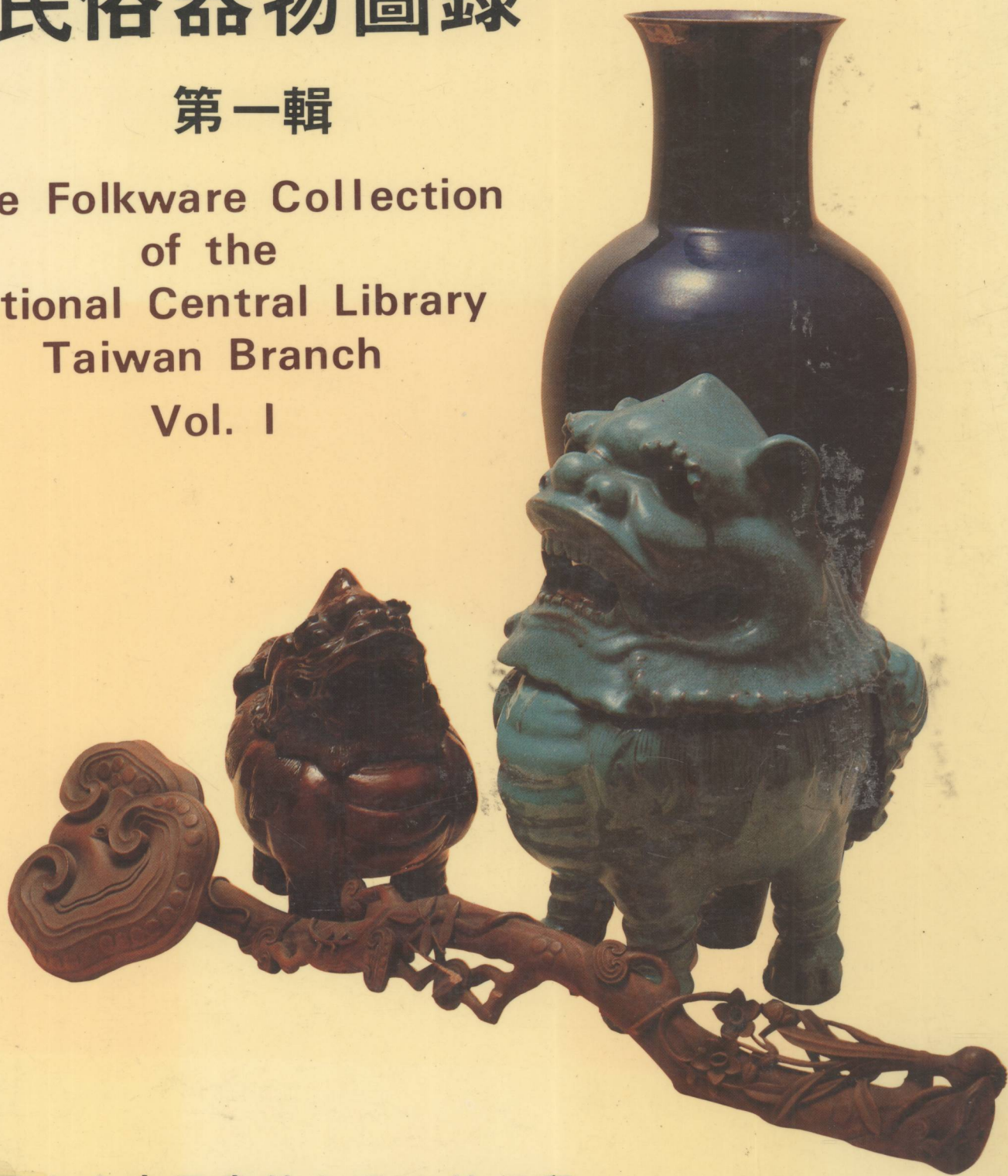


國立中央圖書館台灣分館珍藏

# 民俗器物圖錄

第一輯

The Folkware Collection  
of the  
National Central Library  
Taiwan Branch  
Vol. I



國立中央圖書館台灣分館編印  
中華民國六十九年六月  
June, 1980

國立中央圖書館台灣分館珍藏  
民俗器物圖錄 第一輯

The Folkware Collection  
of the  
National Central Library  
Taiwan Branch  
Vol. I

中華民國六十九年六月國立中央圖書館台灣分館編印

Published by  
the National Central Library's Taiwan Branch  
June, 1980

封面：雙獅獻瑞 平安如意

Cover: Auspicious objects from the NCL Taiwan  
Branch's folkware collection

版權所有・翻印必究

編輯者：國立中央圖書館台灣分館  
台北市新生南路1段1號  
電話：771-8528・721-8274

出版者：國立中央圖書館台灣分館  
印刷者：復美彩色印刷有限公司  
台北市南海路三十六號  
台北市重慶南路二段二十四號  
電話：3510171・3817017

中華民國六十九年六月編印

# 序

中華民國六十三年八月十七日，教育部前部長蔣彥士博士，主持本館民俗器物陳列室正式對外開放，供衆參觀時說：「六十二年十月，臺灣分館由省屬改隸中央。當時本人對如何處理分館館務有過指示，希望從整理環境入手，切實做好爲讀者服務工作，並將收藏的圖書資料分別做有系統的整理，讓讀者能充分利用，尤其一些珍貴的特藏，不能長年累月，束之高閣，需要公諸於世，有計畫的提供專家學者作研究參考之用」。本館當即承命分別規劃、整理。比數年間，乃得以出版館藏圖書資料目錄及專題書目多種，爲讀者提供完美服務。同時將所珍藏之民俗器物，亦經專家鑑定，闢室輪換陳列，供衆參觀，並決定分年分輯編印圖錄，以校實藏品，兼供研究本館之特藏東南亞資料者參考印證之用。

本館所藏民俗器物，其製作時間，遠起秦漢，近迄民國，總數都三千餘件，有銅器、陶器、瓷器、玉器、漆器、竹木雕刻等，大別爲十類，所有藏品絕大多數爲我東南各省民間及旅居南洋僑胞生活上所習用之器物，無一不足以窺見我國歷史文化，悠久博厚，更可顯示中華民族爲世界上最優秀之民族，自始即在有文化、有組織，崇尚倫理道德，宗教信仰自由之和諧氣氛中發榮滋長，職是之故，此累積國人數千年生活經驗所製作，而歷代相沿使用之器物，彌足珍貴。

本輯所收圖片，凡二百零八幀，其實物製作時間，多屬明、清及民國年代。編印本圖錄，由於攝影、製版、撰寫圖說、編排諸端，在在費時，自着手以迄葢事，將近一年，編務多由本館推廣服務組主任章以鼎先生主其事，編輯黃文新先生、秘書翟人倫先生從旁協助，文字英譯部份，則承國立歷史博物館黃永川先生、徐敏和、費凱玲小姐利用公餘完成，可謂辛勞備至。茲當付印之際，用綴數語，藉以敘明本圖錄之編印緣起，並向以上諸君子深致謝忱。付印匆促，錯誤難免，尙祈方家不吝指正爲幸。

劉昌博謹識 中華民國六十九年六月  
於國立中央圖書館台灣分館

# Introduction

On August 17, 1974, the former Minister of Education, Dr. Chiang Yen-shih, presided over the celebrations which marked the Library's folkware display rooms' opening to the general public. In his address Dr. Chiang noted, "The Taiwan Branch Library in October 1973 went from a provincial library to a national one. At that time I gave them my advice on how to administrate this branch library, including the management of the library environment, the need for good reader services, and the need for a systematic governing of the collection's library materials, so that these things could be fully utilized by the Library's patrons. The exquisite pieces in the special collection would especially not be put to one side for long periods of time, but rather they should always be displayed; there ought to also be a scheduled availability of these pieces to specialists for research purposes." The Library immediately accepted these ideas. So in the past years we have been able to publish many catalogs and monographs on our library's collection as a part of our fine reader services. At the same time, the folk art in our collection, after experts' appraisals, were placed in rotating exhibits in order that everyone could be able to view them. We also decided to publish illustrated catalogs in annual and volume editions for the use of our readers; these would help promote the research documentation of scholars on Southeast Asia.

The folk art in the Library's collection date from the Ch'in and Han dynasties to the Republic. Totalling more than 3,000 objects, they include artwork made of bronze, pottery, porcelain, jade, lacquerware, and both carved bamboo and wood, among other mediums, and can be divided into ten general categories. The majority of these objects were the everyday objects used by the peoples of China's southeastern provinces, as well as the things they brought with them when they traveled to other parts of Southeast Asia. No one can fail to see in them our country's long history and rich culture, and how they make the Chinese people one of the foremost in the world. From the beginning there were culture, organization, highmoral values, and freedom of belief in China—everything arose from this harmonious atmosphere. Hence, the creations of this accomplished people which arise from thousands of years' living experience, and have been used for many generations are deeply cherished.

In this collection are 208 illustrations of objects dating from the Ming and Ch'ing dynasties and the Republic of China. The making of this book—including the photography, publishing, writing of the captions, and editing—took almost a year of painstaking work under the direction of the head of the Library's Service Promotion Department, Mr. Chang I-ting, with the assistance of both the Library's editor Mr. Huang Wen-hsin and secretary Mr. Chai Jen-lun. The translation of the text into English was prepared by three editors at the National Museum of History, Mr. Huang Yeong-chuan, Ms. Min-ho Hsu and Ms. Carolyn J. Phillips. Therefore, at the time of this catalog's publication, I would like to thank each of them for their hard work and dedication. If there are any errors in this book, your criticisms will be most welcome.

Liu Ch'ang-po, Director  
Taiwan Branch, National Central Library  
June 1980

# 目次

序	i	44 清竹雕凉枕	21
目次	iii	45 竹凉枕	21
1 清景德窯青花山水蓋盤	1	46 清青花獅子滾繡球瓷凉枕	22
2 清木製榨汁器暨綠釉荷葉碗	1	47 清彩釉仕女圖瓷凉枕	22
3 清黑釉陶把壺	2	48 清彩釉花卉圖瓷凉枕	23
4 清景德窯青花人物花卉六角蓋罐	2	49 清彩釉山水人物圖瓷凉枕	23
5 清景德窯青花山水茶壺各一	3	50 清石灣窯綠釉刻花凉枕	24
6 清素胎鏤花陶製茶具(執壺、茶杯、爐各一)	4	51 清白釉刻花魚鱗紋瓷凉枕	24
7 清素胎鏤花陶製茶具(煮茶示意圖)	5	52 清白底綠紋娃娃形瓷凉枕	25
8 清椰子雕詩文執壺	5	53 清福建墨漆描金八角首飾盒	25
9 清椰子雕詩文執壺	5	54 清道光間石灣窯陳渭岩製巴夏禮夜壺	26
10 清廣窯黃釉龍紋執壺	6	55 清木雕五指山形筆架	27
11 清廣窯沙胎黃釉刻花四耳壺	6	56 清藍釉刻花鯉魚跳龍門瓷筆架	27
12 清廣窯沙胎綠釉三耳壺	7	57 清彩釉菊花山形瓷筆插	27
13 明景德窯青花番蓮雙喜四耳壺	8	58 清石雕人物樓閣山形筆架	27
14 清景德窯青花山水四耳壺	8	59 清雕竹卷形筆筒二件	28
15 清銅胎畫珐瑯蓋碗(附座碟)	9	60 清石灣窯黃綠釉太公釣魚筆插	28
16 清廣東錫胎壓花茶葉罐	9	61 清木刻詩文戒尺	28
17 明建窯白釉鳥口梅花把壺	10	62 清建窯白釉青蛙蕉葉瓷紙鎮	28
18 明建窯白釉獸口梅花把壺	10	63 明建窯白釉劉海戲金蟾瓷水注	29
19 清廣窯綠釉龍口梅花萬應藥酒把壺	11	64 明建窯白釉鶴鹿仙翁瓷水注	29
20 清景德窯彩釉花蝶把壺	11	65 清石灣窯彩釉劉海戲金蟾水注	30
21 清銅胎畫珐瑯把壺	12	66 清石灣窯彩釉桃形水注	30
22 民國初鸚鵡螺嵌銀酒壺	12	67 清石灣窯紫釉靈龜水注	30
23 清銅胎畫珐瑯把壺(一對)	13	68 清石灣窯綠釉蟠龍花插	31
24 清銅胎畫珐瑯蓋罐蓋碗各一	13	69 清彩釉嬉獅六口瓷筆洗	31
25 清銅製水煙袋	14	70 清白釉綠紋梨形瓷水注	31
26 清旱煙筒暨角質煙盒	15	71 清建窯白釉梅花瓷筆洗	32
27 清雲南貴州土司用嵌銅刻花煙筒暨竹質煙盒	15	72 清石灣窯綠釉鴨荷洗	32
28 清旱煙筒暨骨雕煙盒	15	73 清石灣窯薑黃釉象負葡萄洗	33
29 清水煙袋	16	74 清石灣窯藍釉竹雀筆洗	34
30 清水煙袋(喇叭型各一)	16	75 清石灣窯藍釉鉢形洗	34
31 清釉珍型水煙袋(靴形、圓罐形各一)	17	76 清雕竹詩文腕枕	34
32 清鴉片煙燈(銅質鏤花、彩瓷仕女圖各一)	17	77 清景德窯彩釉山水鏤花方形几	35
33 清銅質八仙靈獸鑲玉鴉片煙筒 (另煙燈、煙盒各一)	17	78 清景德窯彩釉山水八角印泥盒	35
34 清彩瓷人物花卉梳妝箱	18	79 清廣窯彩釉桃形印泥盒	35
35 清銀胎掐絲珐瑯袖珍型梳妝盒	18	80 清乾隆窯彩釉富貴牡丹葵花形花盆(一對)	36
36 清木雕朱漆蝶形脂粉盒	18	81 清素胎魚形除鱗器(二件)	36
37 清彩瓷梳妝箱使用示意圖	19	82 清彩釉八寶富貴梅雀洗	37
38 清彩瓷梳妝箱屨內彩繪之一	19	83 清彩釉花鳥洗	38
39 清彩瓷梳妝箱屨內彩繪之二	19	84 清彩釉花卉瓷盂(一對)	39
40 清螺鈿環形首飾盒、朱漆圓形脂粉盒、朱漆蝶形脂粉盒各一	20	85 省油燈(陶三件、瓷一件)	40
41 清椰殼製針線盒	20	86 清油燭二用銅燈台	41
42 清木雕收合如意枕	21	87 清醬黃釉三耳三口油吊燈	41
43 籐編竹凉枕	21	88 清白釉青花省油燈(一)加罩	41
		89 清白釉青花省油燈(二)去罩	41
		90 清白釉青花掛油燈	42
		91 清青紫釉壺形油燈	42

92 清白釉青花把壺形油燈	42
93 清葱白釉八角油燭二用燈	42
94 清石灣窯彩釉葫蘆喜雀油燈台	43
95 清末白釉青花油燈台	44
96 清石灣窯綠釉貼花油燈台	44
97 清紫銅鏤花手提暖爐	45
98 清紫銅鏤花手提方形暖爐	45
99 清紫銅鏤花手提方形暖爐	45
100 清刻花銅熨斗	45
101 清竹雕山水壁花插	46
102 清石灣窯土黃釉蝦形壁花插	46
103 清石灣窯灰釉蟹形壁花插	46
104 清石灣窯黃綠釉鯉形壁花插	46
105 明成化嵌銀五彩瓷碗壁花插	47
106 清景德窯彩釉李白夜宴圖鼓形壁花插	48
107 清景德窯彩釉秋雁圖壁花插	49
108 清景德窯彩釉春桃圖書卷形壁花插	49
109 清石灣窯彩釉鳳嬉牡丹壁花插	50
110 清彩釉花卉壁花插	50
111 清彩釉人物瓷掛屏	50
112 清青花梅雀圖圓插屏	51
113 清石雕人物雲樹屏	51
114 明做定窯瑩白天鷄尊	52
115 明廣窯沙胎黃釉瓶	53
116 清白釉貼花關雲長走馬尊	54
117 清石灣窯綠釉牡丹雙耳瓶	54
118 清廣窯藍釉五岳朝天瓶	55
119 清藍釉鹿耳瓷瓶	56
120 清廣窯藍釉撇口瓶	57
121 清廣窯石榴紅釉葫蘆瓶	57
122 清景德窯彩釉二耳仕女圖撇口瓶	58
123 清景德窯彩釉仕女圖花瓶	59
124 清銀胎掐絲琺瑯香盒二件（一附中國結）	60
125 清竹雕香熏筒	60
126 清廣窯綠釉狻猊香熏	60
127 明建窯白釉二耳三足爐	61
128 明建窯白釉二耳三足爐	61
129 清木刻貨布形帽架	62
130 清景德窯彩釉鏤孔彩蝶花卉帽架	62
131 清廣窯狻猊香熏（湖綠釉、棗紅釉各一）	62
132 清銅胎五彩畫琺瑯四季花鏡台	62
133 清牙雕、竹雕、斑竹雕、紫竹雕鬥蟀蟋用器四件（藏黃狼鬚用）	63
134 清竹編魚簍形儲餌器	63
135 清竹製昆蟲飼籠三件	63
136 清彩釉鳥籠用飼食器二件	63
137 清戩子	64
138 清戩子（匣上附有小算盤）	64
139 清戩子使用示意圖	64
140 清羅盤	65
141 清日晷指南針（方盒）	65
142 清日晷指南針（圓盒）	65
143 清銅製五鈎金剛杵	66
144 清銅製三鈎金剛杵	66
145 清銅製蓮花手爐	66
146 漢銅製舞鏡	66
147 清銅製三足熏爐	67
148 清銅製蓮瓣燭台一對	67
149 明宣德二耳三足爐（連座大、小各一件）	67
150 明銅雕回文二耳三足爐	68
151 明銅雕回文三足爐	68
152 清木雕二耳四足爐	68
153 清黑釉二耳三足爐	68
154 明銅雕回文二耳三足爐（連座）	69
155 清銅胎五彩畫琺瑯五供	70
156 清木雕五供	71
157 清木雕供器	72
158 清黃楊木雕梅竹如意	72
159 清木雕玉虛宮執事牌	73
160 清木雕黃大仙翁執事牌	73
161 清木雕列聖宮執事牌	74
162 清木雕螺鈿恭迎聖駕執事牌	74
163 清紅釉串藍珠瓷齋戒牌	75
164 清木雕齋戒牌二件	75
165 清木雕漆金燭台七星燈台三件	76
166 清黃銅鏤花爐鼎罩	77
167 清瑠璃八卦附木雕福壽座	77
168 清木雕彩漆木魚	78
169 清木雕漆金道冠	78
170 清木雕漆金五雷令牌、雷令牌各一件	78
171 清木雕漆金神龕	79
172 清孫悟空像（木刻漆金五件、彩釉石灣陶塑一件）	80
173 清黃楊木雕紫竹林觀世音座像	81
174 清木雕漆金地藏王座像	82
175 清木雕漆金呂洞賓座像	82
176 清木雕漆金靈寶天尊座像	83
177 清木雕漆金石磯娘娘座像	83
178 清石灣窯彩釉土地公座像	84
179 清石灣窯藍釉鍾馗座像	85
180 明末石灣窯花脊傲唐三彩蚩尤像	86
181 清木雕漆金孫悟空倒立像	86
182 清木雕漆金孫悟空座像二件	87
183 清木雕漆金孫悟空立像、石灣窯彩釉孫悟空座像各一件	87
184 清石灣窯淺藍釉端果士人	88
185 清石灣窯結晶鐵釉羅漢讀經座像	89
186 清石灣窯淺綠釉儒生立讀像	90
187 清石灣窯素胎瘦骨仙座像	90
188 民國初石灣窯冰紋釉孔子立像（正面攝）	91
189 民國初石灣窯冰紋釉孔子立像（側面攝）	91
190 清石灣窯素胎李鐵拐座像（側面攝）	92

191 清石灣窯素胎李鐵拐座像 ( 正面攝 )	92	200 清石灣窯淺灰冰紋釉持杖老翁像	98
192 清石灣窯紫釉書生立像	93	201 清石灣窯彩釉時遷偷鷄像	99
193 清石灣窯藍釉平民驚呼座像	93	202 清石灣窯白釉葫蘆仙像	99
194 清石灣窯乳白釉關公讀春秋座像	94	203 民國石灣窯綠釉漁翁立像	100
195 清石灣窯淺灰釉老儒捧卷立像	94	204 民國石灣窯石榴紅釉漁翁像	100
196 明末石灣窯花脊倣唐三彩文官騎馬像	95	205 民國石灣窯綠釉李白題詩座像	101
197 明末石灣窯花脊倣唐三彩文官策馬像	96	206 民國石灣窯彩釉男女牧童騎牛像	101
198 民國石灣窯白釉 國父立像	97	207 民國石灣窯彩釉漁翁	102
199 民國石灣窯淺灰釉 國父半身像	98	208 民國石灣窯彩釉姜太公釣魚座像	102



# Contents

Introduction . . . . .	i	19. Dragon-mouthed, handled ewer in green glaze with plum-blossom design, Ch'ing dynasty Kwangchow ware . . . . .	11
Contents . . . . .	ii	20. White-glazed, handled ewer with an overglaze decoration of flowers and butterflies, Ch'ing dynasty Ching-teh ware . . . . .	11
1. Blue and white covered plate with landscape design, Ch'ing dynasty Ching-teh ware . . . . .	1	21. Bronze handled-pot with painted enamel decoration, Ch'ing dynasty . . . . .	12
2. Wooden juice-squeezer and green-glazed bowl with a lotus-leaf shape, Ch'ing dynasty . . . . .	1	22. Nautilus-shell and silver wine pot, early Republic . . . . .	12
3. Handled pot with black glaze, Ch'ing dynasty . . . . .	2	23. Pair of bronze handled-pots with painted enamel decoration, Ch'ing dynasty . . . . .	13
4. Hexagonal covered jar with figure and flower design in underglaze blue, Ch'ing dynasty Ching-teh ware . . . . .	2	24. Bronze covered jar and bowl with painted enamel, Ch'ing dynasty . . . . .	13
5. Pair of blue and white teapots with landscape design, Ch'ing-teh ware . . . . .	3	25. Bronze water-pipes, Ch'ing dynasty . . . . .	14
6. Pottery teaset with monochrome glaze and raised pattern (teapot, teacup and brazier), Ch'ing dynasty . . . . .	4	26. Pipe tube and tobacco box made of animal horn, Ch'ing dynasty . . . . .	15
7. Pottery tea set with monochrome glaze and raised pattern (illustration of how tea was brewed), Ch'ing dynasty . . . . .	5	27. A Kweichow, Yunnan, official's pipe and tobacco box of engraved bamboo and bronze, Ch'ing dynasty . . . . .	15
8. Coconut handled-teapot inscribed with a poem, Ch'ing dynasty . . . . .	5	28. Long-stemmed pipe and carved-bone tobacco box, Ch'ing dynasty . . . . .	15
9. Coconut handled-teapot inscribed with a poem, Ch'ing dynasty . . . . .	5	29. Water-pipes, Ch'ing dynasty . . . . .	16
10. Brown-glazed teapot with handle on the top and a raised dragon motif on the sides, Ch'ing dynasty Kwangchow ware . . . . .	6	30. Two water-pipes with trumpet shapes, Ch'ing dynasty . . . . .	16
11. Yellow-glazed clay pot with four-handles and a raised decoration of carved-flowers, Ch'ing dynasty Kwangchow ware . . . . .	6	31. Two pocket type water-pipes, one with a shoe shape and one with a jar shape, Ch'ing dynasty . . . . .	17
12. Green-glazed clay pitcher with three handles, Ch'ing dynasty Kwangchow ware . . . . .	7	32. Bronze opium lamp with floral fretwork and a porcelain opium lamp with polychrome design of a lady, Ch'ing dynasty . . . . .	17
13. Four-handled pitcher with a decoration of Indian lotus in underglaze blue, Ming dynasty Ching-teh ware . . . . .	8	33. Bronze opium pipe with Eight Immortals and sacred animal design and jade inlay, an opium box and an opium lamp, Ch'ing dynasty . . . . .	17
14. Four-handled spouted pot with underglaze blue landscape design, Ch'ing dynasty Ching-teh ware . . . . .	8	34. Polychromed porcelain cosmetic box with figure and floral design, Ch'ing dynasty . . . . .	18
15. Bronze covered-bowl and saucer with painted enamel decoration, Ch'ing dynasty . . . . .	9	35. Silver pocket cosmetic box with cloisonne decoration, Ch'ing dynasty . . . . .	18
16. Tin tea canister with embossed design, Ch'ing dynasty Kwangtung ware . . . . .	9	36. Wooden cosmetic box with vermilion lacquer and a butterfly shape, Ch'ing dynasty . . . . .	18
17. Bird-mouthed, handled ewer with plum-blossom design and white glaze, Ming dynasty Chien ware . . . . .	10	37. Demonstration of the usage of a porcelain cosmetic box with polychrome glazes, Ch'ing dynasty . . . . .	19
18. Beast-mouthed, handled ewer in white glaze with plum-blossom design, Ming dynasty Chien ware . . . . .	10		

38. Paintings inside the drawers of the polychrome pottery cosmetic box in #37. . . . . 19
39. Another painting inside a drawer of the polychrome pottery cosmetic box in #37. . . . . 19
40. A ring-shaped inlaid jewelry box, a round-shaped cosmetic box with vermilion lacquer and a butterfly-shaped cosmetic box with vermilion lacquer, Ch'ing dynasty . . . . . 20
41. Sewing box made of coconut shell, Ch'ing dynasty . . . . . 20
42. Wooden collapsible pillow, Ch'ing dynasty . . . . . 21
43. Rattan pillow . . . . . 21
44. Carved bamboo pillow, Ch'ing dynasty . . . . . 21
45. Bamboo pillow . . . . . 21
46. Porcelain pillow with silk rolled-ball design in underglaze blue, Ch'ing dynasty. . . . . 22
47. Porcelain pillow with lady design in polychrome glaze, Ch'ing dynasty. . . . . 22
48. Porcelain pillow with floral design in polychrome glaze, Ch'ing dynasty. . . . . 23
49. Porcelain pillow with polychrome decoration of figures and landscape, Ch'ing dynasty . . . . . 23
50. Green-glazed pillow with raised floral motif, Ch'ing dynasty Shih-wan ware . . . . . 24
51. White-glazed porcelain pillow with floral design and fish-scales motif, Ch'ing dynasty . . . . . 24
52. Doll-shaped porcelain pillow with green patches on a white base glaze, Ch'ing dynasty . . . . . 25
53. Fukien hair-ornament case with octagonal shape and gilt decorations on black lacquer, Ch'ing dynasty . . . . . 25
54. Chamber-pot with a light blue glaze, Ch'ing dynasty Tao-kuang reign Shih-wan ware . . . . . 26
55. Carved-wood brush rack with a mountain-range shape, Ch'ing dynasty . . . . . 27
56. Blue-glazed porcelain brush rack with a sculpted carp and waves design, Ch'ing dynasty . . . . . 27
57. Porcelain brush holder with a mountain-range shape and a polychrome chrysanthemum design, Ch'ing dynasty . . . . . 27
58. Carved-stone brush rack with figures, pavilion and mountain-range shape, Ch'ing dynasty . . . . . 27
59. Two carved bamboo scroll-shaped brush holders, Ch'ing dynasty . . . . . 28
60. Yellow and green glazed brush holder with a fisherman design, Ch'ing dynasty Shih-wan ware . . . . . 28
61. Wooden ruler carved with a poem, Ch'ing dynasty . . . . . 28
62. White-glazed porcelain paperweight in the shape of a frog on a plantain leaf, Ch'ing dynasty Chien ware . . . . . 28
63. White-glazed painter's water-dropper in the form of Liu Hai playing with a toad, Ming dynasty Chien ware . . . . . 29
64. White-glazed painter's water-dropper with a longevity motif, Ming dynasty Chien ware . . . . . 29
65. Polychrome-pottery painter's water-dropper in the form of Liu Hai playing with a toad, Ch'ing dynasty Shih-wan ware . . . . . 30
66. Polychrome painter's water-dropper in the form of a peach, Ch'ing dynasty Shih-wan ware . . . . . 30
67. Purple-glazed painter's water-dropper in the shape of a fantastic animal, Ch'ing dynasty Shih-wan ware . . . . . 31
68. Green-glazed vase in the shape of a coiled dragon, Ch'ing dynasty Shih-wan ware . . . . . 31
69. Six-mouthed porcelain brush-washer with decorations of playing lions in polychrome glazes, Ch'ing dynasty. . . . . 31
70. Pear-shaped porcelain brush-washer with a green glaze, Ch'ing dynasty . . . . . 31
71. White-glazed porcelain brush-washer with plum blossoms design, Ch'ing dynasty Chien ware . . . . . 32
72. Green-glazed ceramic brush-washer in the form of a duck and lotus, Ch'ing dynasty Shih-wan ware . . . . . 32
73. Ocher-glazed ceramic brush-washer in the shape of an elephant bearing grapes, Ch'ing dynasty Shih-wan ware . . . . . 33
74. Blue-glazed ceramic brush-washer with a bamboo and sparrows design, Ch'ing dynasty Shih-wan ware . . . . . 34
75. Blue-glazed ceramic brush-washer in the shape of an alms bowl, Ch'ing dynasty Shih-wan ware . . . . . 34

76. Inscribed bamboo armrest, Ch'ing dynasty . . . . . 34
77. Rectangular table decorated with floral fretwork and landscape in polychrome glaze, Ch'ing dynasty Ching-teh ware . . . . . 35
78. Seal paste box, Ch'ing dynasty Ching-teh ware . . . . . 35
79. Peach-shaped seal paste box in polychrome glaze, Ch'ing dynasty Kwan ware . . . . . 35
80. Sunflower-shaped bowl with polychrome glaze decoration of peony sprays, Ch'ien-lung ware . . . . . 36
81. A pair of fish-shaped scale removers, Ch'ing dynasty . . . . . 36
82. Porcelain brush-washer with polychrome design of flowers, birds and fortuitous symbols, Ch'ing dynasty . . . . . 37
83. Porcelain brush washer with a polychrome flowers and birds motif, Ch'ing dynasty . . . . . 38
84. Pair of porcelain basins with polychrome glaze decoration of floral medallions, Ch'ing dynasty . . . . . 39
85. Oil-saving lamps (three of pottery, one of porcelain) . . . . . 40
86. Bronze lamp for both candles and oil, Ch'ing dynasty . . . . . 41
87. Three-eared, three-mouthed hanging oil lamp in brown glaze, Ch'ing dynasty . . . . . 41
88. Blue and white oil-saving lamp with cover, Ch'ing dynasty . . . . . 41
89. Blue and white oil-saving lamp without cover, Ch'ing dynasty . . . . . 41
90. Wall-mounted oil lamp in blue and white, Ch'ing dynasty . . . . . 42
91. Dark-glazed oil lamp with a ewer shape, Ch'ing dynasty . . . . . 42
92. Oil lamp with a handled-pot shape in blue and white, Ch'ing dynasty . . . . . 42
93. White-glazed octagonal lamp for both candles and oil, Ch'ing dynasty . . . . . 42
94. Polychrome-glazed oil lamp in the shape of a bottle gourd and bird, Ch'ing dynasty Shih-wan ware . . . . . 43
95. Blue-and-white oil lamp, late Ch'ing dynasty . . . . . 44
96. Green-glazed oil lamp with relief flower design, Ch'ing dynasty Shih-wan ware . . . . . 44
97. Copper hand-held heater with fretwork, Ch'ing dynasty . . . . . 45
98. Copper hand-held heater with a square shape and fretwork, Ch'ing dynasty . . . . . 45
99. Copper hand-held heater with a square shape and fretwork, Ch'ing dynasty . . . . . 45
100. Bronze clothes iron decorated with floral fretwork, Ch'ing dynasty . . . . . 45
101. Carved bamboo wall-vase with landscape motif, Ch'ing dynasty . . . . . 46
102. Ocher-glazed ceramic wall-vase with a shrimp form, Ch'ing dynasty Shih-wan ware . . . . . 46
103. Gray-glazed ceramic wall-vase with a crab shape, Ch'ing dynasty Shih-wan ware . . . . . 46
104. Green and yellow glazed ceramic wall-vase with a carp form, Ch'ing dynasty Shih-wan ware . . . . . 46
105. Silver wall-bracket and wu-ts'ai patterned bowl for flowers, Ming dynasty . . . . . 47
106. Barrel-shaped ceramic wall-vase with polychrome banquet design, Ch'ing dynasty Ching-teh ware . . . . . 48
107. Ceramic wall-vase with polychrome wild-geese motif, Ch'ing dynasty Ching-teh ware . . . . . 49
108. Scroll-shaped porcelain wall-vase with polychrome peach-blossom design, Ch'ing dynasty Ching-teh ware . . . . . 49
109. Ceramic wall-vase with polychrome phoenix and flower motif, Ch'ing dynasty Shih-wan ware . . . . . 50
110. Blue-glazed wall-vase with polychrome flower design, Ch'ing dynasty . . . . . 50
111. Four-framed porcelain and wood hanging screen with polychrome glazed figure design, Ch'ing dynasty . . . . . 50
112. Round blue-and-white porcelain medallion screen with a plum and sparrow design and a wooden frame, Ch'ing dynasty . . . . . 51
113. Carved-stone screen with decoration of figure, clouds and trees, Ch'ing dynasty . . . . . 51
114. White-glazed tsun with the shape of a fabulous bird, Ming dynasty imitation Ting ware . . . . . 52
115. Yellow-glazed vase of sandy clay, Ming dynasty Kwan ware . . . . . 53

116. White-glazed tsun with relief design of figures and horses, Ming dynasty . . . . .54
117. Green-glazed vase with raised peony design and two handles, Ch'ing dynasty Shih-wan ware . . . . .54
118. Blue-glazed vase with five mouths, Ch'ing dynasty Kwan ware . . . . .55
119. Blue-glazed vase with two deer-head ornaments on sides, Ch'ing dynasty . . . . .56
120. Blue-glazed vase with splayed mouth, Ch'ing dynasty Kwan ware . . . . .57
121. Pomegranate-red glazed vase with a bottle-gourd shape, Ch'ing dynasty Kwan ware . . . . .57
122. Polychrome-glazed vase with a design of women and flowers, a splayed mouth, and two handles, Ch'ing dynasty Ching-teh ware . . . . .58
123. Polychrome-glazed vase with a design of figures, Ch'ing dynasty Ching-teh ware . . . . .59
124. A pair of enamelled silver sachets with Chinese macrame, Ch'ing dynasty . . . . .60
125. Carved bamboo incense containers, Ch'ing dynasty . . . . .60
126. Green-glazed incense container with a lion shape, Ch'ing dynasty Kwan ware . . . . .60
127. Tripod incense burner with white glaze and two handles, Ming dynasty Chien ware . . . . .61
128. Tripod incense burner with white glaze and two handles, Ming dynasty Chien ware . . . . .61
129. Carved-wood hat stand in the shape of an ancient coin, Ch'ing dynasty . . . . .62
130. Porcelain hat stand with polychrome butterflies and flowers and with flower-shaped holes, Ch'ing dynasty Ching-teh ware . . . . .62
131. A pair of lion-shaped incense burners, one glazed with turquoise blue and one with date red, Ch'ing dynasty Kwan ware . . . . .62
132. Mirror stand with four-season enamelled motif on bronze base, Ch'ing dynasty . . . . .62
133. Tools for cricket fighting — one of ivory and three of bamboo, Ch'ing dynasty ( used to hold yellow wolf hairs ). . . . .63
134. Fish-trap shaped bait-basket, Ch'ing dynasty . . . . .63
135. Three bamboo cricket cages, Ch'ing dynasty . . . . .63
136. Two bird feeders with polychrome glazes, Ch'ing dynasty . . . . .63
137. Weight for precious metals and medicines, Ch'ing dynasty . . . . .64
138. Weight for precious metals and medicines (with an abacus on the case), Ch'ing dynasty . . . . .64
139. Illustration of #138's usage . . . . .64
140. Geomancer's compass, Ch'ing dynasty . . . . .65
141. Square compass and sundial, Ch'ing dynasty . . . . .65
142. Round compass and sundial, Ch'ing dynasty . . . . .65
143. Bronze five-pronged Buddhist weapon, Ch'ing dynasty . . . . .66
144. Bronze three-pronged Buddhist weapon, Ch'ing dynasty . . . . .66
145. Bronze hand-held censer with a lotus shape, Ch'ing dynasty . . . . .66
146. Bronze dance bell, Hann dynasty . . . . .66
147. Bronze tripod incense burner, Ch'ing dynasty . . .67
148. Pair of bronze candlesticks with lotus motif, Ch'ing dynasty . . . . .67
149. Pair tripod incense burners with two handles and wooden stands, Ming dynasty Hsüan-teh reign . . . . .67
150. Tripod bronze incense burner with Arabic writing and two handles, Ming dynasty . . . . .68
151. Tripod bronze incense burner with Arabic writing, Ming dynasty . . . . .68
152. Four-footed wood censer with two handles, Ch'ing dynasty . . . . .68
153. Tripod dark-brown lacquer censer, Ch'ing dynasty . . . . .68
154. Tripod bronze incense burner with two handles and Arabic writing (wooden stand), Ming dynasty . . . . .69
155. A five-piece Buddhist altar set in polychrome enamel on bronze, Ch'ing dynasty . . . . .70
156. A five-piece Buddhist altar set made of carved wood, Ch'ing dynasty . . . . .71
157. Wooden Buddhist altar, Ch'ing dynasty . . . . .72

158. Boxwood ju-i scepter carved with plum blossoms, Ch'ing dynasty . . . . . 72
159. A god's wooden name plaques from Yü-hsü Temple, Ch'ing dynasty . . . . . 73
160. Huang-ta-hsien-weng's name plaques carved from wood, Ch'ing dynasty . . . . . 73
161. A god's wooden name plaques from Lieh-sheng Temple, Ch'ing dynasty . . . . . 74
162. A god's ceremonial plaques made of inlaid wood, Ch'ing dynasty . . . . . 74
163. Plaque for the period of abstinence in red-glazed porcelain with blue beads, Ch'ing dynasty . . . . . 75
164. Two plaques for the period of abstinence in carved wood, Ch'ing dynasty . . . . . 75
165. Gilt wood Buddhist altar oil lamp and pair of oil-lamp stands, Ch'ing dynasty . . . . . 76
166. Brass censer cover with longevity-motif fretwork, Ch'ing dynasty . . . . . 77
167. Opaque glass eight-diagrams amulet and its wooden stand with a luck and longevity motif, Ch'ing dynasty . . . . . 77
168. Carved wooden fish drum, Ch'ing dynasty . . . . . 78
169. Taoist headpiece of gilt wood, Ch'ing dynasty . . . . . 78
170. A pair of wooden Taoist tablets used for issuing orders, Ch'ing dynasty . . . . . 78
171. Lacquered wood altar for nine deities, Ch'ing dynasty . . . . . 79
172. Statues of the monkey Sun Wu-k'ung (five of carved gilt wood and one of Shih-wan ware glazed pottery), Ch'ing dynasty . . . . . 80
173. Boxwood sculpture of a seated Kuan-yin amid bamboo, Ch'ing dynasty . . . . . 81
174. A seated King of Hades (Ti-tsang-wang) of gilt wood, Ch'ing dynasty . . . . . 82
175. A seated Lü Tung-pin of gilt wood, Ch'ing dynasty . . . . . 82
176. A seated Ling-pao-t'ien-tsun of gilt wood, Ch'ing dynasty . . . . . 83
177. A seated Goddess of the Star Yüeh-yu (Shih-chi niang-niang) of gilt wood, Ch'ing dynasty . . . . . 83
178. A seated Earth God (T'u-ti-kung) of glazed pottery, Ch'ing dynasty Shih-wan ware . . . . . 84
179. A seated Demon Slayer (Chung K'uei) of blue-glazed pottery, Ch'ing dynasty Shih-wan ware . . . . . 85
180. Ch'ih-yu, the legendary rebel subdued by the Yellow Emperor (Huang-ti), of imitation T'ang tricolor pottery, late Ming dynasty Shih-wan ware . . . . . 86
181. The monkey Sun Wu-k'ung in gilt wood standing on his hands, Ch'ing dynasty . . . . . 86
182. Two seated statues of the monkey Sun Wu-k'ung out of gilt wood, Ch'ing dynasty . . . . . 87
183. A standing Sun Wu-k'ung of gilt wood and a seated Sun Wu-k'ung of glazed Shih-wan pottery, Ch'ing dynasty . . . . . 87
184. Blue-glazed scholar bearing a plate of fruit, Ch'ing dynasty Shih-wan ware . . . . . 88
185. A Buddhist arhat in crystallized-iron glaze reading the sutras, Ch'ing dynasty Shih-wan ware . . . . . 89
186. Standing Confucian scholar in light-green glaze reading a book, Ch'ing dynasty Shih-wan ware . . . . . 90
187. Unglazed figure of a seated Buddhist arhat, Ch'ing dynasty Shih-wan ware . . . . . 90
188. Standing figure of Confucius with a crackle glaze on his robe, early Republic Shih-wan ware (front view) . . . . . 91
189. Standing figure of Confucius with a crackle glaze on his robe, early Republic Shih-wan ware (side view) . . . . . 91
190. Unglazed seated figure of Li T'ieh-kuai, one of the Eight Immortals, Ch'ing dynasty Shih-wan ware. (side view) . . . . . 92
191. Unglazed seated figure of Li T'ieh-kuai, one of the Eight Immortals, Ch'ing dynasty Shih-wan ware (front view) . . . . . 92
192. Standing scholar with purple glaze, Ch'ing dynasty Shih-wan ware . . . . . 93
193. Seated figure of a shouting man with blue glaze, Ch'ing dynasty Shih-wan ware . . . . . 93
194. Milk-white glaze figure of a seated Kuan Kung reading 'The Spring and Autumn Annals,' Ch'ing dynasty Shih-wan ware . . . . . 94
195. Standing Confucian scholar in light-gray glaze holding a scroll, Ch'ing dynasty Shih-wan ware . . . . . 94
196. Imitation T'ang tricolor horse and rider, late Ming Shih-wan ware . . . . . 95

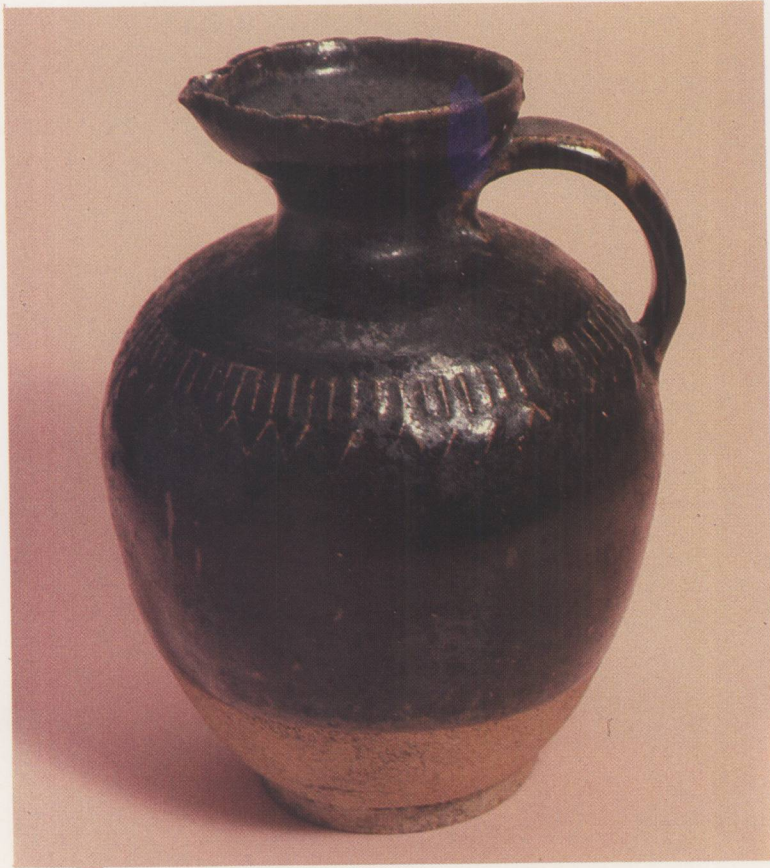
- |  |    |  |     |
|--|----|--|-----|
| 197. Imitation T'ang tricolor horse and rider,<br>late Ming Shih-wan ware . . . . .  | 96 | 203. Standing fisherman with green glaze,<br>Republic period Shih-wan ware . . . . .   | 100 |
| 198. White-glazed standing figure of Dr. Sun<br>Yat-sen, Republic period Shih-wan ware . . . . .   | 97 | 204. Standing fisherman with pomegranate-red<br>glaze, Republic period Shih-wan ware . . . . .   | 100 |
| 199. Bust of Dr. Sun Yat-sen with light-gray<br>glaze, Republic period Shih-wan ware . . . . .   | 98 | 205. A green-glazed seated Li Po writing a poem,<br>Republic period Shih-wan ware . . . . .  | 101 |
| 200. Standing old man in light-gray crackle<br>glaze holding a staff, Ch'ing dynasty<br>Shih-wan ware . . . . .                                    | 98 | 206. A boy and a girl cowherd in polychrome<br>glazes astride water buffaloes, Republic<br>period Shih-wan ware . . . . .                              | 101 |
| 201. Polychrome-glaze seated figure of<br>Shih Chien, one of the patrons of<br>Brigands, with a chicken, Ch'ing<br>dynasty Shih-wan ware . . . . . | 99 | 207. Polychrome fisherman and basket,<br>Republic period Shih-wan ware . . . . .   | 102 |
| 202. White-glazed seated figure with a gourd,<br>Ch'ing dynasty Shih-wan ware . . . . .  | 99 | 208. A seated figure of Chiang Tzu-ya, a famous<br>general of the Chou dynasty, as the God<br>of Fishermen, Republic period Shih-wan<br>ware . . . . . | 102 |



1 清景德窯青花山水蓋盤 直徑：20.5公分 高：11公分  
Blue and white covered plate with landscape design, Ch'ing dynasty Ching-teh ware.  
D: 20.5cm H: 11cm



2 清木製榨汁器暨綠釉荷葉碗 口徑：18公分 高：6.8公分 高：24.7公分  
Wooden juice-squeezer and green-glazed bowl with a lotus-leaf shape, Ch'ing dynasty.  
D: 18cm H: 6.8cm H: 24.7cm



3 清黑釉陶把壺 口徑：5.7公分 高：14.5公分  
Handled pot with black glaze, Ch'ing dynasty  
D: 5.7cm H: 14.5cm

4 清景德窯青花人物花卉六角蓋罐 高：14.2公分  
Hexagonal covered jar with figure and flower  
design in underglaze blue, Ch'ing dynasty  
Ching-teh ware H: 14.2cm







5 清景德窯青花山水茶壺各一 高：13公分 高：12.6公分

Pair of blue and white teapots with landscape design, Ch'ing-teh ware. H: 13cm H: 12.6cm