

ha

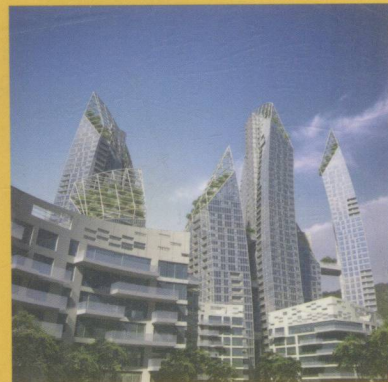
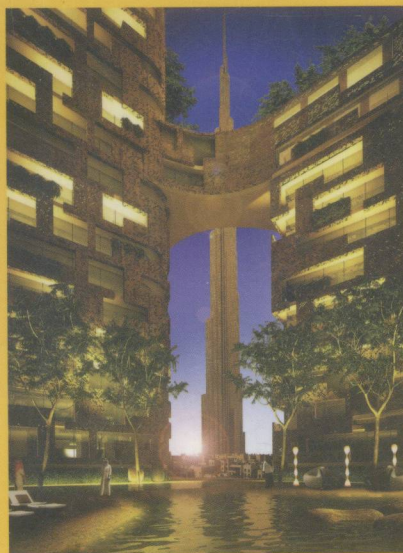
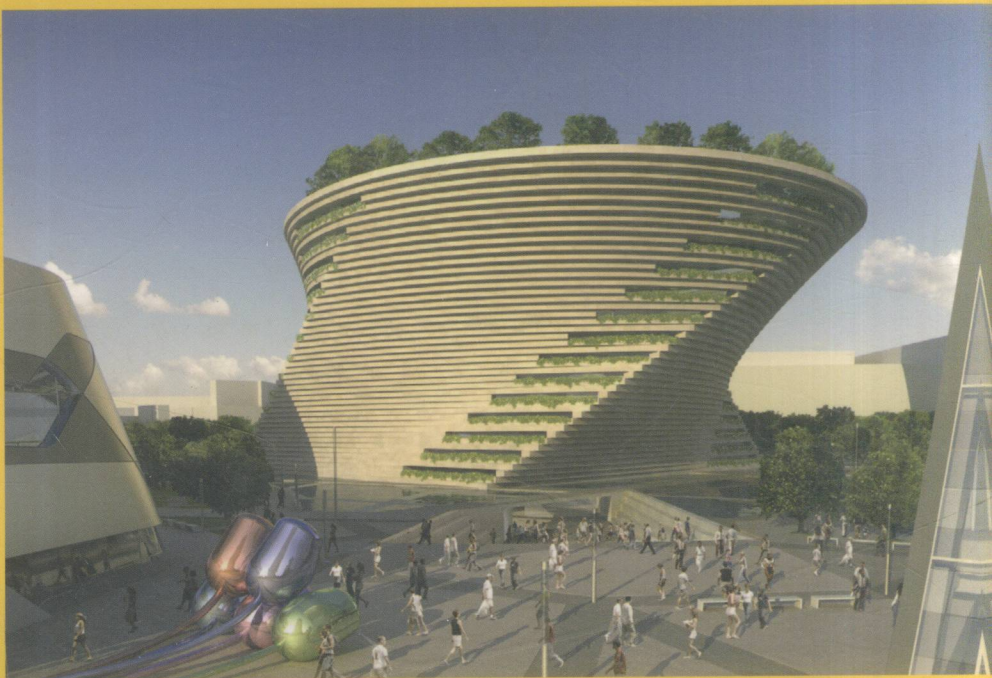
住宅建筑

新地产形势下的建筑思路

Housing Architecture

Architectural Ideas under New Circumstances

香港科讯国际出版有限公司 编



《 华中科技大学出版社

ha

住宅建筑

新地产形势下的建筑思路

Housing Architecture

Architectural Ideas under New Circumstances

香港科讯国际出版有限公司 编

《华中科技大学出版社

中国·武汉

图书在版编目(CIP)数据

住宅建筑 / 香港科讯国际出版有限公司 编.

—武汉: 华中科技大学出版社, 2009.7

ISBN 978-7-5609-5404-2

I. 住… II. 香… III. 住宅—建筑设计—设计方案—汇编—世界 IV. TU241

中国版本图书馆CIP数据核字(2009)第084039号

住宅建筑 香港科讯国际出版有限公司 编

出版发行: 华中科技大学出版社

地 址: 武汉市珞喻路1037号(邮编: 430074)

出 版 人: 阮海洪

责任编辑: 孔慧丽

责任校对: 李文玲

责任监印: 张正林

出版总监: 李仕泉

流程指导: 叶雯枰

文编指导: 何小兰

美编指导: 杨 锋

翻 译: 何 妮

装帧设计: 贝思出版有限公司 邓宽道

印 刷: 深圳市彩美印刷有限公司

开 本: 1440mm×1020mm 1/16

印 张: 16

字 数: 128千字

版 次: 2009年7月第1版

印 次: 2009年7月第1次印刷

书 号: ISBN 978-7-5609-5404-2 / TU · 620

定 价: 238.00元

销售电话: 022-60266190, 022-60266199(兼传真)

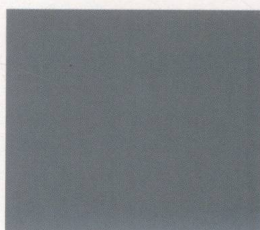
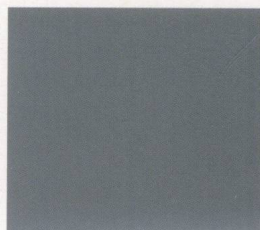
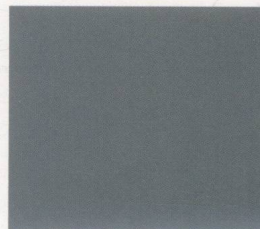
网 址: www.hustpas.com

(本图书凡属印刷、装帧错误, 可向承印厂或发行部调换)

ha³

CONTENTS

目录



10
Fiera Milano
Fiera Milano 住宅区

Studio Daniel Libeskind



46
Krøyers Plads,
Copenhagen
哥本哈根 Krøyers Plads 住宅区
**Erick van Egeraat associated
architects**

16
Haeundae Udong
Complex
釜山海云台佑洞综合区

Studio Daniel Libeskind



50
Simpanan, Kuala Lumpur
吉隆坡 Simpanan
WoW Architects Pte Ltd

22
Reflections at Keppel Bay
印象·吉宝海湾

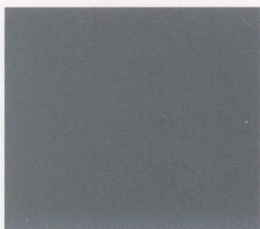
Studio Daniel Libeskind



54
Marina Dubai
迪拜码头
Rojkind Arquitectos

26
Injaz Square
Injaz 广场

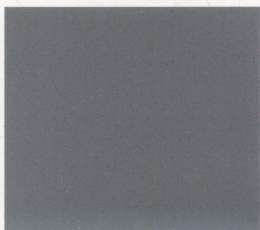
WoW Architects Pte Ltd



62
The River Goes Wide
The River Goes Wide 住宅区
**Atelier Thomas Pucher &
Bramberger architects**

32
The Gateway, Shenzhen
深圳·金地名津

Leigh & Orange Ltd



70
LGA Apartments
LGA 公寓
bgp architectura

36
Russian Avant-garde
Complex
俄罗斯前卫住宅区

**Erick van Egeraat associated
architects**



76
Zlota 44
Zlota 44 住宅区
Studio Daniel Libeskind



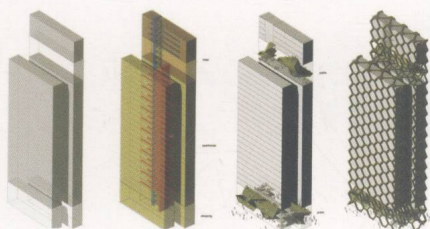
82
Tirana Tower
地拉那大厦

Erick van Egeraat associated architects



88
Springtide Residences
Springtide 公寓

Architects 61 sdn bhd



96
Apartment Building and
Hotel in Santa Fe
墨西哥圣塔菲酒店式公寓

Rojkind Arquitectos



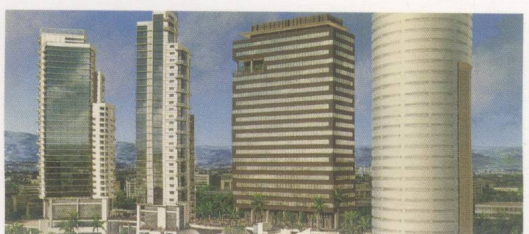
102
Condominium, 1540 Bloor
Street West
布尔西街 1540 号共管公寓

Teeple Architects Inc



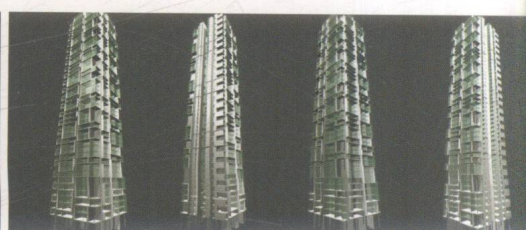
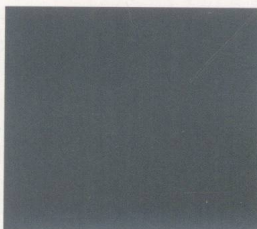
108
Head Street, Forster
新南威尔士公寓

aleksandar design group



112
City Santa Fe Barcelona
Tower
圣塔菲巴塞罗那大楼

bgp arquitectura



118
Durama Condominium
Durama 共管公寓

Arkitek Axis



146
ZAC Marianne Housing
Complex
ZAC Marianne 住宅区

Architecture-Studio

122
Subsidized Housing,
Añaza
Añaza 补贴住宅

gpy arquitectos



152
Buggyworks
哥伦布 Buggyworks 住宅楼

**Jonathan Barnes Architecture and
Design Ltd**

128
Orbit Arya
Orbit Arya 大厦

WoW Architects Pte Ltd



158
The Apartment Block at
the End of the Line
公寓楼

Herauld Arnod Architects

132
Park City, Kuala Lumpur
吉隆坡 Park City

WoW Architects Pte Ltd



162
Housing Complex in
Metaxourgeio
Metaxourgeio 住宅区

Katerina Tsigarida Architects

136
Student Hostels & Academic
Building, The Lingnan University
香港岭南大学学生宿舍与教学楼

**Architecture Design and Research
Group Limited**

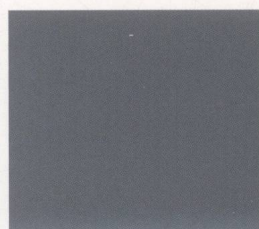


166
Nong Chik Heights
马来西亚 Nong Chik Heights
住宅区

Arkitek M. Ghazali

140
"Red Lace" Novoli,
Florence
佛罗伦萨 "Red Lace" 公寓

**Odile Decq Benoît Cornette
Architects and Urban Planners**



170
Sentral Greens
檳城 Sentral Greens 住宅区

Architect T.Y. Au



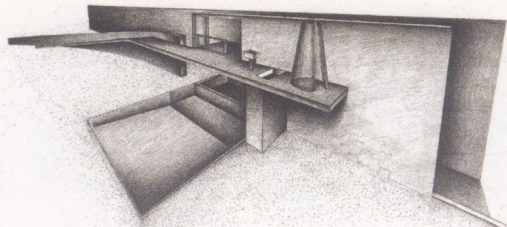
176
Long Island Villas,
Dongguan
东莞塘厦银湖山庄 5 期长岛别墅

CYS Associates (HK) Ltd



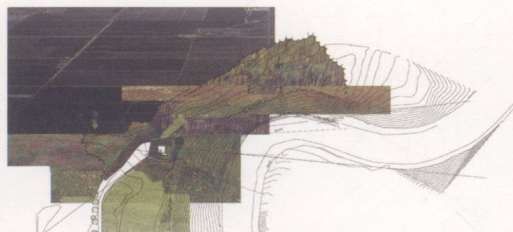
182
All Electric Home
电子住宅

Ronald Lu & Partners



186
A Garden Studio
花园工作室

Ian F. Taberner AIA



192
Earth / Sky Knot House
大地 / 天空住宅

Dean / Wolf Architects



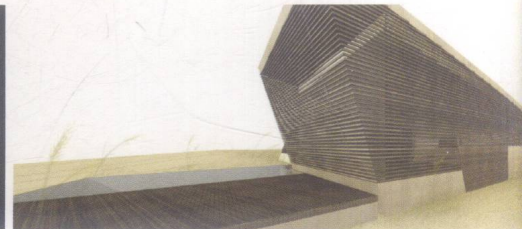
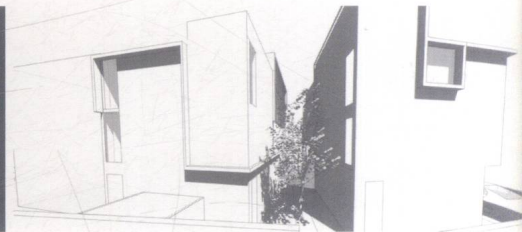
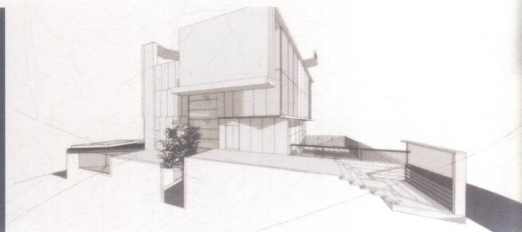
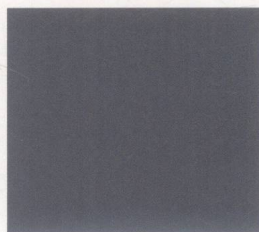
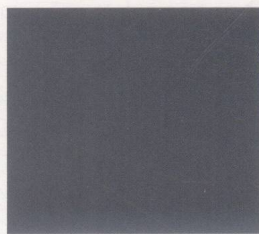
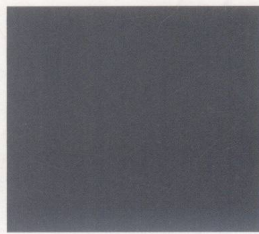
198
Villa Sulla Collina
Sulla Collina 别墅

UdA with Maby Picco



204
2 Residences, Tramway
Road
2 栋住宅楼

aleksandar design group



208
Ridge House
脊屋

Desai/Chia Architecture PC

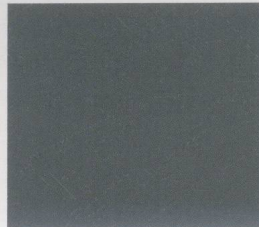


238
EagleFeather
鹰羽住宅

Joseph Khoo - TENSEGRITY Inc

214
Cliff House, Nevada
内华达悬崖屋

Mark Dziewulski Architect

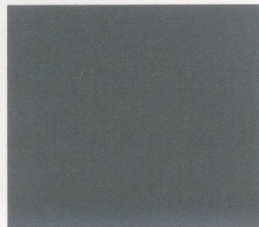


244
Lot 33 House
Lot 33 号住宅

Arkitek Axis

220
Courtyard House, Macau
澳门四合院

CHK Design Institute

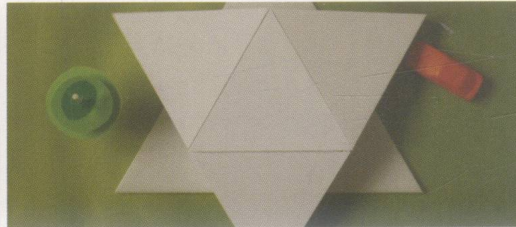
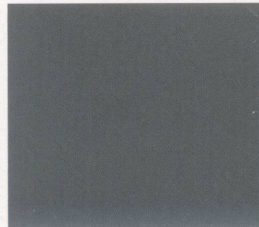


248
5040 Santa Monica Ave,
California
加州“5040”

Steven Lombardi Architects

226
14° Houses
14度住宅楼

CHK Design Institute



250
Star House
星居

Eva Harlou Architects

230
Knost Residence
Knost 住宅

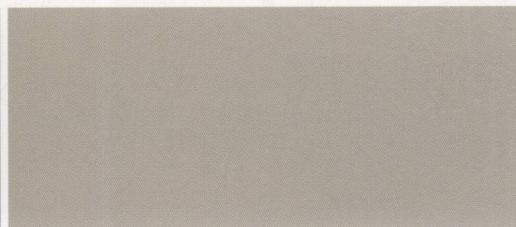
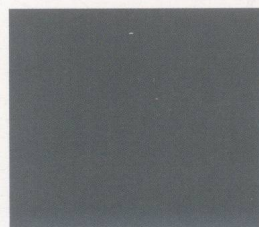
Trahan Architects



252
Index by architect
建筑公司索引

234
Hillsteps
Hillsteps 住宅

Joseph Khoo - TENSEGRITY Inc



254
Index by country
国家索引

Fiera Milano

Fiera Milano 住宅区

Studio Daniel Libeskind

Client/owner
Fiera Milano

Location
Milan, Italy

Site area
428 982 m²

GFA
300 000 m²

Other key consultants

Landscape Architect: Sophie Agate Ambroise;
MEP Engineering: Alpina SpA
TOWER AND MUSEUM
MEP and Structural Engineering: ARUP;
Lift Strategy: Roger Preston & Partners
RESIDENTIAL
Structural Engineering: AMIS srl;
MEP Engineering: MANENS INTERTECNICA s.r.l.;
Client Representative: Europrogetti;
Collaborating Architects: Zaha Hadid, Arata Isozaki,
Pier Paolo Maggiora;
Joint Venture Partner: CityEdge SRL

业主: Fiera Milano
项目地点: 意大利米兰
占地面积: 428 982 平方米
建筑面积: 300 000 平方米

主要顾问公司

景观建筑: Sophie Agate Ambroise
机电工程: Alpina SpA
大楼与博物馆
机电与结构工程: ARUP
电梯设计: Roger Preston & Partners
住宅
结构工程: AMIS srl
机电工程: MANENS INTERTECNICA s.r.l.
业主代表: Europrogetti
建筑合作方: Zaha Hadid, Arata Isozaki, Pier
Paolo Maggiora
合资伙伴: CityEdge SRL

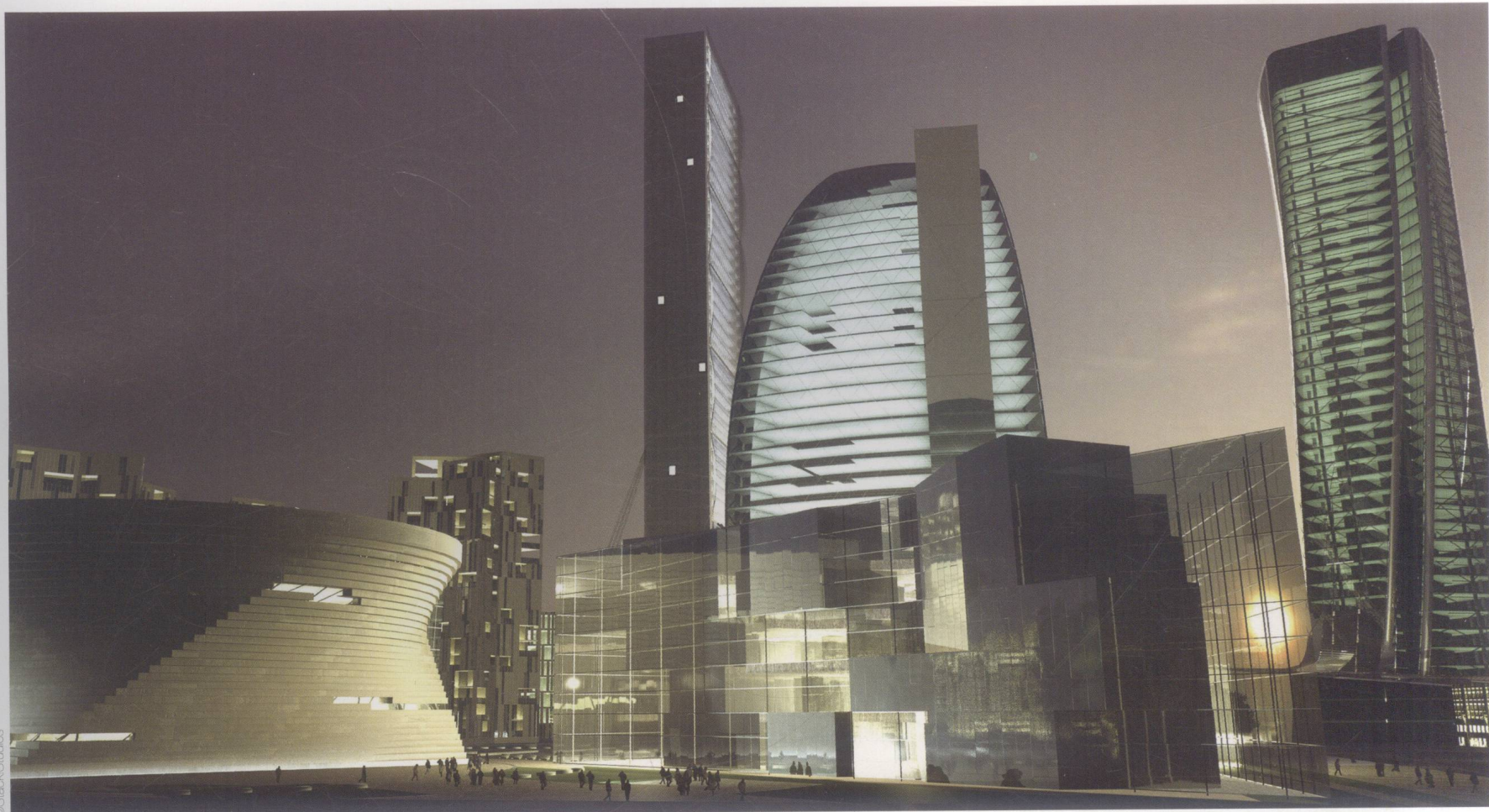
The Fiera Milano project is located in the heart of Milan, spanning 106 acres on the old fairgrounds of this historic city. Daniel Libeskind won the commission for master planner of the site in 2004 and is now working in collaboration with Zaha Hadid, Arata Isozaki and Pier Paolo Maggiora on the project. The scheme of Fiera Milano incorporates residential and office development, retail space and a museum all built around a central park — a much needed lung for the city. SDL is not only designing the master plan, but the park, the museum of contemporary art, one of the office towers and the first housing area.

The project is large in both scope and area and will ultimately create a new neighborhood in the cultural and historical context of Milan. The challenge posed by the Fiera site, which is central and critical to the development of Milan, is that it should not be viewed as merely a building development, but something more all together. Milan is a cultural center for Italy, exhibiting the best of what the country has to offer. It is a place that holds the dreams, aspirations and pride of all the Milanese. It is in this way that the site must be representative of the greatness of Italian design, furniture, fashion technology and deserves nothing less than a visionary, yet practical urban scheme.

Despite the magnitude of the project, the strategy of the proposal is simple and straightforward. It provides a seamless connectivity into the existing city fabric, creating a new neighborhood around a central park and a new public piazza within a beautiful high-rise skyline. The housing units, ranging from villas to apartment blocks, are carefully sited on the perimeter of the site and at a scale, which resonates within the existing context. The new housing uses the existing plan as a point of departure and creates living typologies that are both sympathetic to the traditional forms yet forward looking. The housing also creates a balance between private courtyards and larger public spaces.

In order to provide a culturally diverse and exciting mix with the housing, the organization of the scheme carefully places essential cultural buildings and retail amenities on site. Close to the center of the new grand central park are three iconic commercial high rise buildings. This component of the site is deliberately and resolutely concentrated in order to maximize space for a grand park, a grand piazza and other public and private spaces.

The scheme of Fiera Milano is exciting not only in its architecture and planning, but because it deliberately offers stunning vistas, exciting pedestrian experiences, wonderful views and a balance between the commercial space, the workplace and the new living and recreational environments. This project is a paradigm for a new Milan and a competitive edge for the city in a world of increasing competition and importance within Europe.



Night rendering 夜景效果图

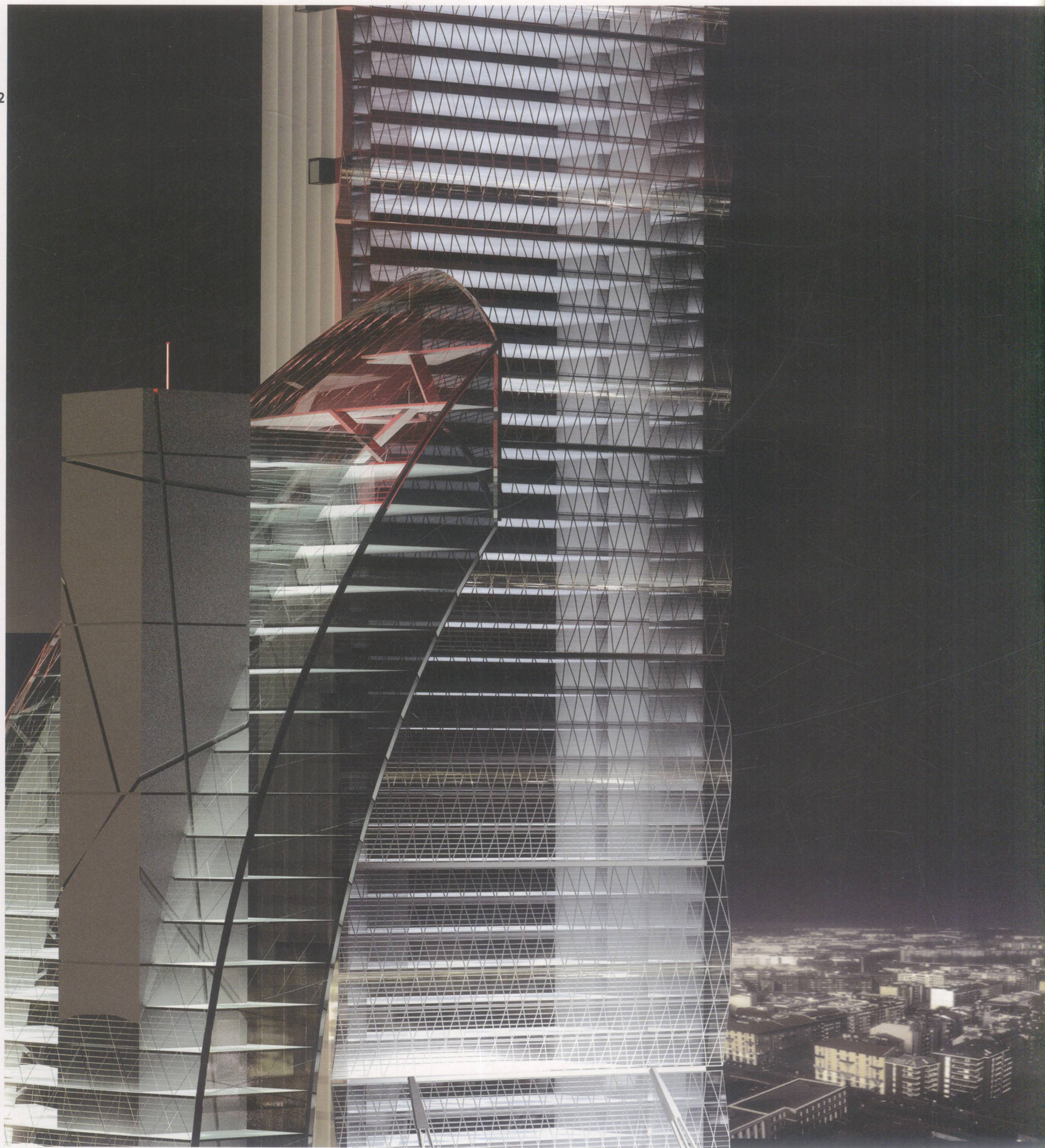
Fiera Milano 建于米兰中心地带的露天市场旧址之上，占地面积达 106 英亩（428 982 平方米）。2004 年，Daniel Libeskind 设计工作室赢得了该项目的负责权，目前参与规划的有 Zaha Hadid, Arata Isozaki, Pier Paolo Maggiora。Fiera Milano 项目包括中央公园周边的住宅办公区、零售区及博物馆。SDL 不仅负责总体规划的设计，还有公园、现代艺术博物馆、办公楼及首个住宅区的设计。

大面积的 Fiera Milano 项目即将成为米兰文化历史背景下新的社区。它关系到米兰现在及未来的发展，不是毫无联系的独立的建筑项目。米兰是意大利的文化中心，时刻向人们展示最好的一面。它聚集了所有米兰人的梦想、愿望及自豪感。因此，项目必须体现意大利设计、家具及时尚工艺的精髓，是一个既有远见又现实的城市规划方案。

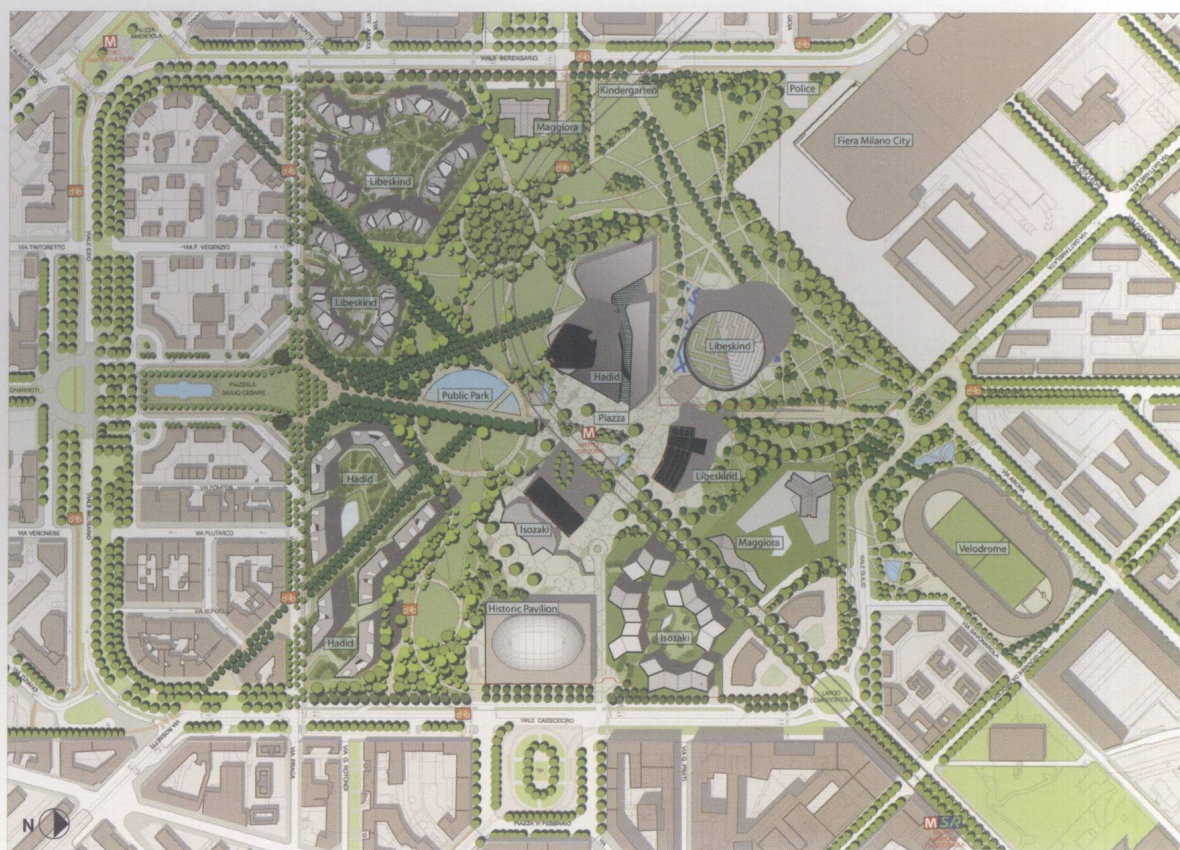
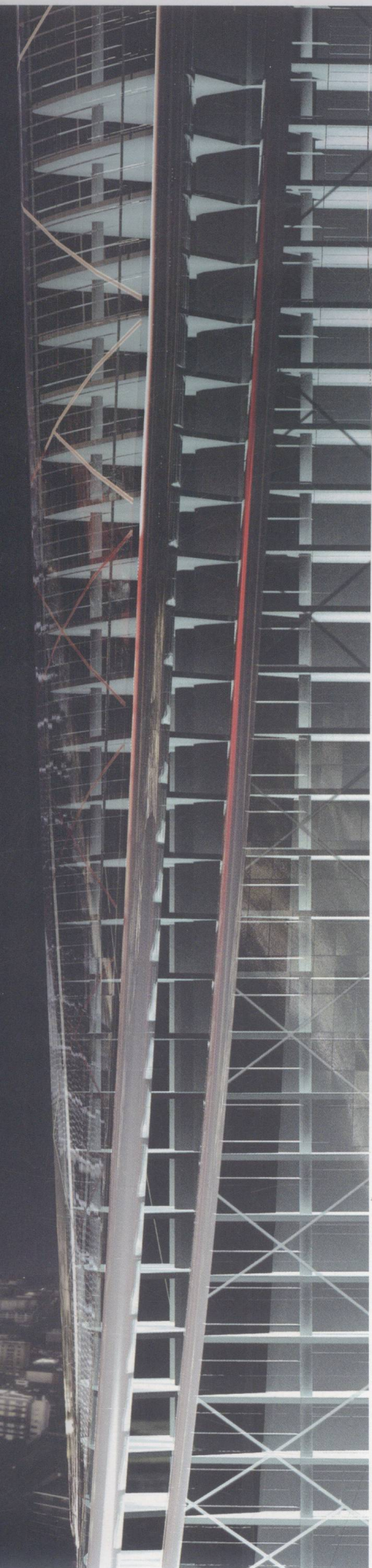
尽管项目规模巨大，然而建设方案还是简单明了的。它的设计融合了米兰城市建筑风格，是中央公园及公共广场附近一道亮丽的风景线。设计中，从别墅到公寓楼，住宅单位成规模地位于项目地点内，与原有的建筑格局呼应。新住宅从现有方案出发，创建了一个既符合传统造型又具有前瞻性的生活类型。同时，新住宅也使私人庭院与大型公共场所取得了平衡。

为了提供一个多元化、娱乐设施齐备的住宅区，规划中还强调了基础文化大楼与零售设施的建设。中央公园中心附近有三栋标志性的商业高楼大厦。该部分如此集中是为了增大公园、广场以及其他公共、私人区域的空间。

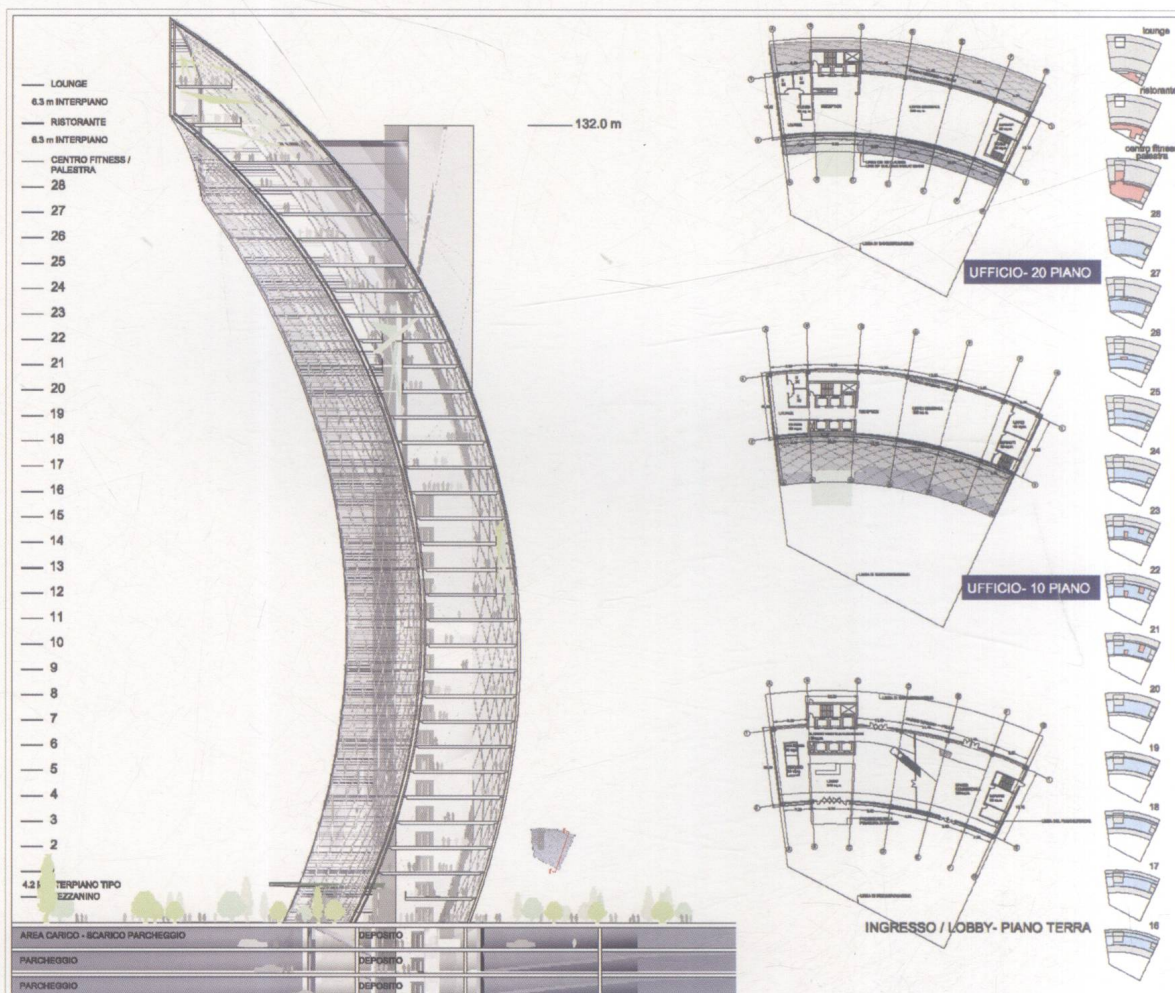
Fiera Milano 设计方案的成功不仅在于架构及规划的合理，还在于其专门打造的迷人街景、奇妙的亲身体验以及商业区、工作区、生活区与娱乐区之间的完美协调。该项目是米兰建筑的新标志，彰显出设计的个性，是欧洲建筑设计史中的一枝奇葩。



Night rendering 夜景效果图

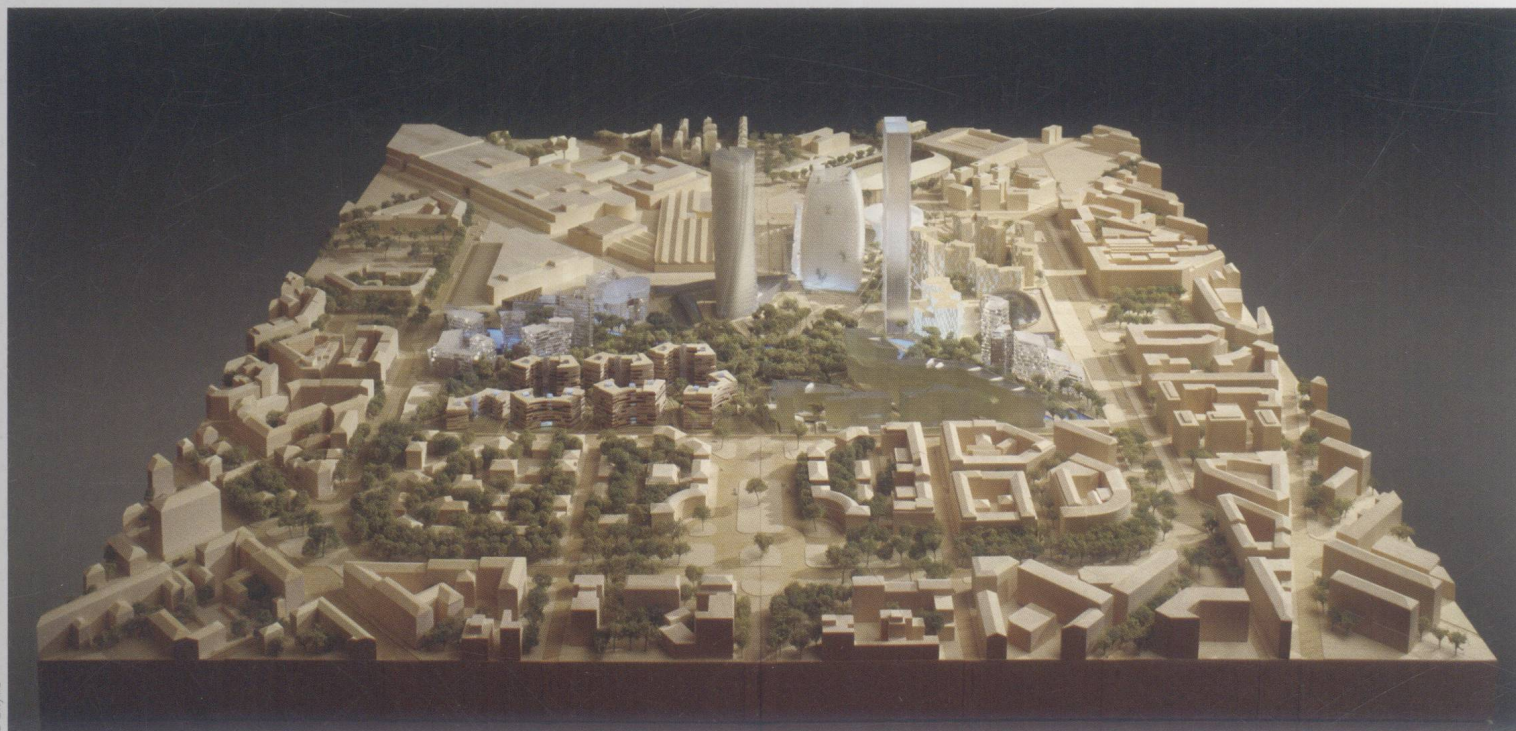


Site plan 规划图

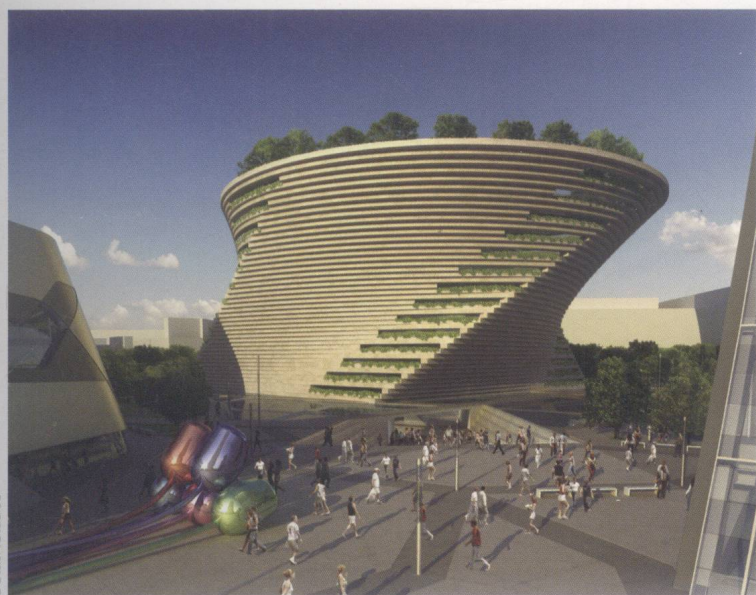


Plans and sections 平面图、剖面图





Model shot 模型



Museum renderings 博物馆效果图



Haeundae Udong Complex

釜山海云台佑洞综合区

16

Studio Daniel Libeskind

Client/owner

Haeundae Udong Hyundai I'Park

Location

Busan, South Korea

GFA

450 000 m²

Other key consultants

Structural Engineer: ARUP, Dong Yang Structural Engineers Co.;

MEP Engineer: SYSKA Hennessy, Hyun Woo;

Geotechnical Engineer: Saegil E & C Co.;

Landscape Consultant: Ctopos;

Curtain Wall Consultant: Wallplus;

Fire Protection Consultant: Yung-Do Engineering Co.;

Lighting Consultant: LPA;

Architect of Record: Kunwon, Hanmi;

Contractor: Hyundai Development Company

业主: Haeundae Udong Hyundai I'Park

项目地点: 韩国釜山

建筑面积: 450 000 平方米

主要顾问公司

结构工程: ARUP, Dong Yang Structural Engineers Co.

机电工程: SYSKA Hennessy, Hyun Woo

岩土工程: Saegil E & C Co.

景观顾问: Ctopos

幕墙顾问: Wallplus

消防顾问: Yung-Do Engineering Co.

灯光顾问: LPA

建筑师: Kunwon, Hanmi

承包商: Hyundai Development Company

The concept of the Haeundae Udong project is to build a powerful and unique icon expressed in a dynamic volume on the Busan waterfront. Studio Daniel Libeskind will produce five new towers sculpted to express the dramatic beauty and power of the ocean. The curvilinear geometry of the buildings plays with concepts of traditional Korean architecture, often derived from natural beauty such as the grace of an ocean wave, the unique composition of a flower petal, or the wind-filled sails of a ship.

Sculptural in form, the Haeundae Udong development creates a new icon for the city of Busan. The buildings radiate a new spirit for condominium living within a vibrant mixed-use development. The space which the buildings create is meant to enhance the life of its inhabitants both inside and outside.

The project not only celebrates those who live within it, but offers many exciting new perspectives and city contexts for Busan. The apartments take advantage of the site by maximizing the sweeping views of the ocean, the marina, the mountains, the Gwang-An bridge and the city of Busan.

The image is created not only from the shape of the individual buildings but by the placement of the buildings on the site. The design aims to take advantage of the shape of the site to provide the most desirable apartments.

海云台佑洞项目的主要目标是在釜山滨水区建立一个独一无二的标志性建筑。Daniel Libeskind 工作室将设计新建 5 栋大楼用以展示海洋的无穷魅力与力量。大楼的曲线造型融合了韩国传统的建筑理念，而传统的建筑理念往往又源于自然美景，如优美的海浪、形状独特的花瓣或扬帆起航的船舶。

海云台佑洞项目的新建大楼是釜山地区的新地标。它们在充满活力的混合开发过程中传递了一种公寓生活的新精神。大楼创建的空间也是为了提高内外住户的生活质量。

项目不仅是为住户量身打造，更为城市带来广阔前景，在这里可以欣赏到釜山迷人的美景。公寓充分利用地理优势，延伸了海滨、码头、山脉、Gwang-An 大桥及釜山的风景。

项目形象的树立不仅源自每栋大楼的外形，还有其选址。它充分利用地理优势，创造了理想化的住宅。

