

第 3 版

内 附
配套DVD



Topol

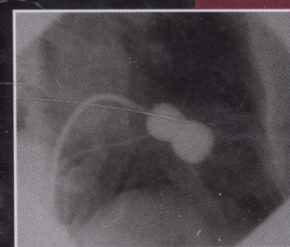
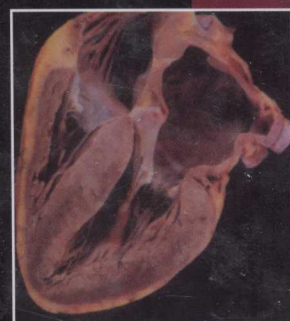
心血管病学


Textbook of Cardiovascular Medicine

原 著 Eric J. Topol
Robert M. Califf
Eric N. Prystowsky
James D. Thomas
Paul D. Thompson

主 译 胡大一

副主译 周玉杰



 人民卫生出版社



Topol 心血管病学

Textbook of Cardiovascular Medicine

第 3 版

原 著 Eric J. Topol
Robert M. Califf
Eric N. Prystowsky
James D. Thomas
Paul D. Thompson

主 译 胡大一

副主译 周玉杰

审校者 (以姓氏笔画为序)

于 波 王 蓓 伍贵富 杜凤和 杜志民 李 浪
李 悦 李为民 李田昌 李治安 李建军 李瑞杰
杨 娅 杨庭树 张兆琪 张抒扬 张维君 孟 旭
高 炜 郭文怡 郭丽君 郭来敬 曾玉杰



人民卫生出版社

R54
T950.02

Textbook of Cardiovascular Medicine, 3rd edition

Copy right © 2007 Lippincott Williams & Wilkins

All rights reserved. This book is protected by copyright. No part of this book may be reproduced in any form or by any means, including photocopying, or utilized by any information storage and retrieval system without written permission from the copyright owner, except for brief quotations embodied in critical articles and reviews.

Topol 心血管病学, 第3版

中文版版权归人民卫生出版社所有。本书受版权保护。除可在评论性文章或综述中简短引用外, 未经版权所有者书面同意, 不得以任何形式或方法, 包括电子制作、机械制作、影印、录音及其他方式对本书的任何部分内容进行复制、转载或传送。

图书在版编目 (CIP) 数据

Topol 心血管病学/胡大一主译. —北京: 人民卫生出版社, 2009. 10

ISBN 978-7-117-11567-4

I. T… II. 胡… III. 心脏血管疾病-诊疗
IV. R54

中国版本图书馆 CIP 数据核字 (2009) 第 144467 号

门户网: www.pmph.com	出版物查询、网上书店
卫人网: www.hrhexam.com	执业护士、执业医师、 卫生资格考试培训

图字: 01-2007-2396

Topol 心血管病学

主 译: 胡大一

出版发行: 人民卫生出版社 (中继线 010-67616688)

地 址: 北京市丰台区方庄芳群园 3 区 3 号楼

邮 编: 100078

E - mail: pmph@pmph.com

购书热线: 010-67605754 010-65264830

印 刷: 北京汇林印务有限公司

经 销: 新华书店

开 本: 889×1194 1/16 印张: 106

字 数: 3282 千字

版 次: 2009 年 10 月第 1 版 2009 年 10 月第 1 版第 1 次印刷

标准书号: ISBN 978-7-117-11567-4/R · 11568

定价(含光盘): 450.00 元

版权所有, 侵权必究, 打击盗版举报电话: 010-87613394

(凡属印装质量问题请与本社销售部联系退换)



■ 中文版序

《Topol 心血管病学》作为当今循证心血管医学专著,是由世界著名心脏病学专家 Eric J. Topol 教授主编的一部经典教科书。我们翻译的是本书的第 3 版。

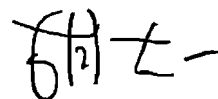
这一版有纸质书、DVD-ROM 和互联网相关的传播方式。本书分为八部分,包括预防心脏病学、临床心脏病学、心血管影像学、电生理与起搏、介入心脏病学和外科学、心力衰竭和心脏移植、分子心脏病学、血管生物学和医学等学科,最后两部分为心脏病学新发展出来的重要领域,内容丰富。每一部分都由世界著名的学者编写,具有权威性。同版的 DVD-ROM 包括全文、心音、影像/图/表格、导管、CT/MRI、超声心动图、电生理与起搏、血管内超声成像、核心脏病学以及外科操作的视频,形式生动、活泼。读者还可以在相应网站上获取全文、心音和影像/图/表格等内容。

近年来,心血管病学的发展日新月异,基础理论不断更新,先进的诊断、治疗方法和设备层出不穷,更新更有力的临床试验证据推动了心血管病学的可持续发展。《Topol 心血管病学》第 3 版正是基于心血管病学的这种进展在第 2 版的基础上进行了更新和完善,包含了心血管病学各个领域的最新进展。

主编 Eric J. Topol 教授是世界著名的心脏病学专家,同时他也是心血管病学临床试验领域的探索与先驱之一,临床试验贯彻本书的始终。他希望能够用当前临床试验中的有益信息指导日常的临床实践。本书吸收了当前心血管临床试验和研究的最新成果,具有时代感和前瞻性。

本书同时注重临床实用性,并且每一章节都含有对目前争议问题的评论以及对未来发展趋势的开拓性展望。

为了使国内广大的心血管病医生能够同步分享这本心血管病学的经典巨著,我们邀请了国内多家大型医院知名的心血管病专家和中青年骨干对本书进行了系统的翻译。各位专家本着严谨求实的精神和认真负责的态度,不辞劳苦,字斟句酌,力求在忠实原著的基础上使文字简练和流畅。但由于本书涉及内容广泛,参译人员众多,翻译水平不等,尽管各位译者及专家力求精确,但仍可能存在疏漏和翻译不当之处,恳请读者给予指导和谅解。



2009 年 9 月 16 日

John R. Bartholomew, MD

Assistant Clinical Professor
Department of Medicine
Penn State College of Medicine
Section Head—Vascular Medicine
Department of Cardiovascular Medicine
Cleveland Clinic
Cleveland, OH

Rhonda Bassel-Duby, PhD

Associate Professor
Department of Molecular Biology
University of Texas Southwestern Medical Center
Dallas, TX

Craig T. Basson, MD, PhD

Professor; Director, Cardiovascular Research
Division of Cardiology, Department of Medicine
Weill Medical College of Cornell University
Attending Physician
Department of Cardiology, Medicine
New York Presbyterian Hospital
Cornell Medical Center
New York, NY

Kenneth L. Baughman, MD

Professor
Department of Medicine
Harvard Medical School
Director, Advanced Heart Disease Section
Department of Medicine/Cardiovascular Disease
Brigham and Women's Hospital
Boston, MA

Christophe Bauters, MD

Professor, Department of Cardiology
Lille University
Chief, Department of Heart Failure
Hôpital Cardiologique
Lille, France

Richard C. Becker, MD

Professor of Medicine
Department of Medicine
Duke University College of Medicine
Director, Cardiovascular Thrombosis Center
Duke University Medical Center
Durham, NC

Robert H. Beekman III, MD

Professor of Pediatrics
Department of Pediatric Cardiology
University of Cincinnati School of Medicine
Director of Cardiology
Department of Pediatric Cardiology
Cincinnati Children's Hospital Medical Center
Cincinnati, OH

Susan M. Begelman, MD, RVT

Medical Director, Noninvasive Vascular Laboratory
Department of Cardiovascular Medicine
Cleveland Clinic
Cleveland, OH

David G. Benditt, MD

Professor
Department of Medicine
University of Minnesota
Director, Cardiac Arrhythmia Service
University of Minnesota Hospital—Fairview
Minneapolis, MN

Ronald Berger, MD, PhD

Professor
Department of Medicine, Biomedical Engineering
Johns Hopkins University
Director of Electrophysiology Training Program
Department of Medicine
Johns Hopkins Hospital
Baltimore, MD

Michael E. Bertrand, MD

Professor of Cardiology
University of Lille 2
Lille Heart Institute
Lille, France

Mandeep Bhargava, MD

Department of Cardiovascular Medicine
Cleveland Clinic
Cleveland, OH

Deepak L. Bhatt, MD

Associate Professor of Medicine
Department of Cardiovascular Medicine
Cleveland Clinic
Staff Physician
Department of Cardiovascular Medicine
Cleveland Clinic
Cleveland, OH

Eugene H. Blackstone, MD

Director, Clinical Research
Department of Thoracic and Cardiovascular Surgery
Cleveland Clinic
Cleveland, OH

Burns C. Blaxall, PhD

Assistant Professor
Cardiovascular Research Institute
University of Rochester Medical Center
Rochester, NY

Robert C. Block, MD

Preventive Cardiology Post-doctoral Fellow
Department of Community and Preventive Medicine
University of Rochester School of Medicine and Dentistry
Clinical Instructor
General Medicine Unit
Strong Memorial Hospital
Rochester, NY

David A. Bluemke, MD, PhD, MsB

Associate Professor
Department of Radiology and Medicine
Johns Hopkins University School of Medicine
Clinical Director, MRI
Russell R. Morgan Department of Radiology and
Radiological Science
Johns Hopkins Hospital
Baltimore, MD

Meredith Bond, PhD

Professor and Chair
Department of Physiology
University of Maryland School of Medicine
Baltimore, MD

Lawrence M. Boxt, MD

Professor of Clinical Radiology
Department of Radiology
Albert Einstein College of Medicine
Chief of Cardiac MRI and CT
Department of Cardiology
Northshore University Hospital
Manhasset, NY

Andrew Boyle, MD

Assistant Professor
Department of Medicine
University of Minnesota
Medical Director
Department of Inpatient Cardiology
University of Minnesota Medical Center at Fairview
Minneapolis, MN

M. Elizabeth Brickner, MD

Associate Professor
Department of Internal Medicine
University of Texas, Southwestern Medical Center
Dallas, TX

Matthew M. Burg, PhD

Associate Clinical Professor of Medicine
Department of Medicine, Section of Cardiovascular Medicine
Yale University School of Medicine
Associate Clinical Professor of Medicine
Department of Medicine, Division of General Medicine
Columbia University School of Medicine
New York, NY

Allen Burke, MD

Associate Professor
Department of Pathology
University of Maryland
Deputy Director, CVPPath
International Registry of Pathology
Gaithersburg, MD

Robert M. Califf, MD

Vice Chancellor for Clinical Research
Duke University
Durham, NC

Hugh Calkins, MD

Professor of Medicine
Johns Hopkins University
Director of the Arrhythmia Services and Clinical
Electrophysiology Laboratory
Johns Hopkins Hospital
Baltimore, MD

Blase A. Carabello, MD

Professor of Medicine
Department of Medicine
Baylor College of Medicine
Medical Care Line Executive
Department of Medicine
Michael E. DeBakey Veterans Affairs Medical Center
Houston, TX

Fabio Cattaneo, MD

Consultant
Clinica Luganese Moncucco
Lugano, Switzerland

Manuel D. Cerquiera, MD

Chairman, Department of Molecular and Functional Imaging
Cleveland Clinic
Professor of Radiology
Cleveland Clinic Lerner College of Medicine of Case Western
Reserve University
Cleveland, OH

Kanu Chatterjee, MD

Ernest Gallo Distinguished Professor of Medicine
Department of Medicine
University of California, San Francisco
Professor of Medicine
Department of Medicine
Moffitt-Long Hospital, UCSF
San Francisco, CA

Melvin D. Cheitlin, MACC

Emeritus Professor of Medicine
Department of Medicine
University of California, San Francisco
Former Chief of Cardiology
Department of Medicine
San Francisco General Hospital
San Francisco, CA

Derek P. Chew, MBBS, MPH

Associate Professor
Department of Medicine
Flinders University
Director, Cardiac Intensive Care
Department of Cardiovascular Medicine
Flinders Medical Centre
South Australia, Australia

G. Ralph Corey, MD

Professor of Medicine and Infectious Disease
Department of Medicine
Duke University Medical Center
Durham, NC

Mark A. Creager, MD

Professor of Medicine
Department of Medicine
Harvard Medical School
Director, Advanced Heart Disease
Department of Medicine
Brigham and Women's Hospital
Boston, MA

Michael H. Criqui, MD, MPH

Professor
Department of Family and Preventive Medicine
Department of Medicine
University of California San Diego
School of Medicine
La Jolla, CA

Lori B. Daniels, MD

Department of Medicine, Division of Cardiology
University of California, San Diego
Department of Medicine, Division of Cardiology
University of California, San Diego Medical Center
San Diego, CA

Dawood Darbar, MD

Assistant Professor
Department of Medicine
Vanderbilt University School of Medicine
Director, Vanderbilt Arrhythmia Service
Vanderbilt University Medical Center
Vanderbilt Heart Institute
Nashville, TN

John R. Davies, MD

Division of Cardiovascular Medicine
Addenbrooke's Hospital
Cambridge University
Cambridge, UK

Steven B. Deitelzweig, MD

Member, Section of Vascular Medicine
Section Head, Hospital-Based Internal Medicine
Ochsner Clinic Foundation
New Orleans, LA

Milind Y. Desai, MD

Departments of Cardiovascular Medicine and
Radiology
Cleveland Clinic
Cleveland, OH

Angela Dispenzieri, MD

Associate Professor
Department of Medicine, Division of Hematology
Mayo Clinic
Department of Medicine, Division of Hematology
Rochester Methodist Hospital
Rochester, MN

Ellen A. Dornelas, PhD

Assistant Professor
Department of Medicine
University of Connecticut School of Medicine
Director of Behavioral Health Programs
Department of Preventive Cardiology
Hartford Hospital
Hartford, CT

John S. Douglas, Jr., MD

Professor of Medicine
Department of Medicine
Emory University School of Medicine
Director of Interventional Cardiology
Division of Cardiology
Emory University Hospital
Atlanta, GA

Sarfraz Durrani, MD

Fellow, Electrophysiology
Department of Cardiology
Duke University Medical Center
Durham, NC

Perry M. Elliott, MD

Senior Lecturer
Department of Medicine
University College London
Consultant Cardiologist
The Heart Hospital
London, UK

John Ellis, MD

Professor, Department of Anesthesia & Critical Care
The University of Chicago
Chicago, IL

Robert C. Elston, MD

Department of Epidemiology and Biostatistics
Case Western Reserve University
Cleveland, OH

N. A. Mark Estes, MD

Professor of Medicine
Tufts University
Director of the Electrophysiology
Division of Cardiology
Tufts New England Medical Center
Boston, MA

John D. Fisher, MD

Professor of Medicine
Albert Einstein College of Medicine
Director, Arrhythmia Services
Department of Medicine, Cardiology
Montefiore Medical Center
Bronx, NY

Frank A. Flachskampf, MD

Professor of Internal Medicine
University of Erlangen
Chief, Department of Internal Medicine/Cardiology
Asklepios Klinik Hamburg
Hamburg, Germany

Joe Foss, MD

Director of Clinical Research
The Department of General Anesthesiology
Cleveland Clinic
Cleveland, Ohio

Vance G. Fowler, Jr., MD, MHS

Associate Professor
Department of Medicine
Division of Infectious Diseases
Duke University Medical Center
Durham, NC

Keith A. A. Fox, MB, ChB

Professor of Cardiology
Department of Cardiovascular Research
University of Edinburgh
Consultant Cardiologist
Department of Cardiology
Royal Infirmary of Edinburgh
Edinburgh, UK

Gary S. Francis, MD

Professor of Medicine
Department of Cardiology
Cleveland Clinic, Lerner College of
Medicine of Case Western University
Head, Clinical Cardiology Section
Department of Cardiology
Cleveland Clinic
Cleveland, OH

Anthony J. Furlan, MD

Head, Section of Stroke and Neurocritical Care
Department of Neurology
Cleveland Clinic
Cleveland, OH

Mario J. Garcia, MD

Professor of Medicine
Cleveland Clinic Lerner College of Medicine of
Case Western Reserve University
Director, Cardiac Imaging
Department of Cardiovascular Medicine
Cleveland Clinic
Cleveland, OH

A. Marc Gillinov, MD

Staff Surgeon and Surgical Director
Center for Atrial Fibrillation
Department of Thoracic and Cardiovascular Surgery
Cleveland Clinic
Cleveland, OH

Stanton A. Glantz, PhD

Professor
Department of Medicine, Cardiology
University of California, San Francisco
San Francisco, CA

Nicola J. Goodson, MRCP, PhD

Senior Lecturer in Rheumatology
Academic Rheumatology Unit, Division of Infection
and Immunity
University Hospital Aintree, Liverpool University
Honorary Consultant Rheumatologist
Rheumatology Department
University Hospital Aintree
Liverpool, UK

Heather L. Gornik, MD

Associate Staff Physician
Sections of Clinical Cardiology and Vascular Medicine
Department of Cardiovascular Medicine
Cleveland Clinic
Cleveland, OH

Augustus O. Grant, MB, ChB, PhD

Professor of Medicine
Department of Medicine
Duke University
Professor
Department of Medicine
Duke University Medical Center
Durham, NC

Philip Greenland, MD

Harry W. Dingman Professor
Department of Preventive Medicine and Medicine
Northwestern University Feinberg School of Medicine
Cardiology Consultant
Department of Medicine
Northwestern Memorial Hospital
Chicago, IL

Brian P. Griffin, MD

Department of Cardiovascular Medicine
Cleveland Clinic
Cleveland, OH

Richard A. Grimm, DO

Director, Echocardiography Laboratory
Department of Cardiovascular Medicine
Cleveland Clinic
Cleveland, OH

Christian Gring, MD

Imaging Section, Cardiology Division,
Cleveland Clinic
Cleveland, OH

Madhu Gupta, MSc, PhD

Director, Molecular Cardiology
The Heart Institute for Children
Hope Children's Hospital
Palos Heights, IL

Maresh P. Gupta, PhD

Associate Professor
Department of Surgery
The University of Chicago
Chicago, IL

Garrie J. Haas, MD

Associate Professor of Clinical Medicine
Department of Medicine/Division of Cardiovascular
Medicine
The Ohio State University Medical Center
Columbus, OH

David E. Haines, MD

Director
Heart Rhythm Center
William Beaumont Hospital
Royal Oak, MI

Rainer Hambrecht, MD

Associate Professor
Department of Cardiology
University of Leipzig
Vice-Director
Heart Center
Leipzig, Germany

Stephen C. Hammill, MD

Professor
Department of Medicine
Mayo Clinic College of Medicine
Director, Heart Rhythm Services
Division of Cardiovascular Diseases
Mayo Clinic
Rochester, MN

Heather Cohen Henri, MD

Clinical Instructor of Medicine
Department of Medicine
Stanford University Medical Center
Clinical Instructor of Medicine
Department of Medicine
Stanford Hospital and Clinics
Palo Alto, CA

Frederick A. Heupler, Jr., MD

Quality Assurance Officer
Department of Cardiovascular Medicine
Cleveland Clinic
Cleveland, OH

L. David Hillis, MD

Daniel W. Foster Distinguished Chair in Internal Medicine
Vice-Chair, Department of Medicine
University of Texas Southwestern Medical Center
Dallas, TX

Judith S. Hochman, MD

Harold Snyder Family Professor of Cardiology
Clinical Chief, The Leon H. Charney Department of Cardiology
Director, Cardiovascular Clinical Research
Department of Cardiology/Medicine
New York University School of Medicine
New York, NY

Katherine J. Hoercher, RN

Director of Research
Kaufman Center for Heart Failure
Cleveland Clinic
Cleveland, OH

Judith Hsia, MD

Professor
Department of Medicine
George Washington University
Washington, DC

G. Chad Hughes, MD

Assistant Professor
Department of Surgery
Duke University
Durham, NC

Srinivas Iyengar, MD

Clinical Instructor
Department of Cardiology
The Ohio State University
Heart Failure Fellow
Department of Cardiology
The Ohio State University Medical Center
Columbus, OH

Michael R. Jaff, DO

Assistant Professor
Department of Medicine
Harvard Medical School
Director, Vascular Medicine
Department of Cardiovascular Medicine
Massachusetts General Hospital
Boston, MA

Jean Jeudy, Jr., MD

Department of Diagnostic Radiology
Division of Cardiothoracic Imaging
University of Maryland Medical System
Assistant Professor
University of Maryland School of Medicine
Baltimore, MD

Prince Kannankeril, MD, MSCI

Assistant Professor
Department of Pediatrics
Vanderbilt University
Assistant Professor
Department of Pediatrics
Vanderbilt Children's Hospital
Nashville, TN

Samir R. Kapadia, MD

Associate Professor
Department of Medicine
Cleveland Clinic Lerner College of Medicine of Case Western Reserve University
Director, Interventional Cardiology Fellowship
Department of Cardiovascular Medicine
Cleveland Clinic
Cleveland, OH

David Kass, MD

Abraham and Virginia Weiss Professor of Cardiology
Professor of Medicine
Professor of Biomedical Engineering
Department of Medicine
Johns Hopkins University Medical Institutions
Baltimore, MD

Amos Katz, MD

Associate Professor
Cardiology Department
Faculty of Health Sciences
Ben-Gurion University of the Negev
Chief, Department of Cardiology
Barilai Medical Center
Ashkelon, Israel

Arnold M. Katz, MD

Professor Emeritus
Department of Medicine
University of Connecticut
Visiting Professor
Department of Medicine and Physiology
Department Medical School
Lebanon, NH

David E. Kelley, MD

Professor of Medicine
Department of Medicine, Division of Endocrinology and Metabolism
University of Pittsburgh
Pittsburgh, PA

Allan L. Klein, MD

Professor of Medicine
Department of Cardiovascular Medicine
Cleveland Clinic Lerner College of Medicine of Case Western Reserve University
Director, Cardiovascular Imaging Research
Department of Cardiovascular Medicine
Cleveland Clinic
Cleveland, OH

Liviu Klein, MD, MS

Fellow in Cardiovascular Disease
Division of Cardiology
Northwestern University Feinberg School of Medicine
Bluhm Cardiovascular Institute
Northwestern Memorial Hospital
Chicago, IL

Robert A. Kloner, MD, PhD

Professor of Medicine
Division of Cardiovascular Medicine
Keck School of Medicine at the University of Southern California
Director of Research
Heart Institute
Good Samaritan Hospital
Los Angeles, CA

Robert H. Knopp, MD

Professor of Medicine
Department of Medicine
University of Washington
Chief
Division of Metabolism, Endocrinology and Nutrition
Harborview Medical Center
Seattle, WA

Andrew Krumerman, MD
 Assistant Professor of Medicine
 Department of Medicine
 Albert Einstein College of Medicine
 Attending Electrophysiologist
 Division of Cardiology
 Montefiore Medical Center
 Bronx, NY

Richard A. Lange, MD
 Professor
 Department of Internal Medicine
 Johns Hopkins Medical Institution
 Chief of Clinical Cardiology
 Department of Internal Medicine
 The Johns Hopkins Hospital
 Baltimore, MD

Daniel Laskowitz, MD, MHS
 Associate Professor of Medicine
 (Neurology)
 Department of Medicine
 Duke University School of Medicine
 Durham, NC

Michael S. Lauer, MD
 Professor of Medicine, Epidemiology and
 Biostatistics
 Cleveland Clinic Lerner College of Medicine of
 Case Western Reserve University
 Clinical Cardiologist
 Department of Cardiovascular Medicine
 Cleveland Clinic
 Cleveland, OH

Julie Laveglia, RN, BSN
 Staff Nurse
 Coronary Intensive Care Unit
 Cleveland Clinic
 Cleveland, OH

Jennifer S. Li, MD, MHS
 Associate Professor
 Department of Pediatrics
 Duke University Medical Center
 Durham, NC

Joao A. C. Lima, MD, MBA
 Associate Professor of Medicine
 and Radiology
 Department of Medicine
 Johns Hopkins University
 Director of Cardiovascular Imaging
 Department of Medicine
 Johns Hopkins Hospital
 Baltimore, MD

Aldons J. Lusis, PhD
 Professor
 Department of Medicine/Division of Cardiology,
 Department of Human Genetics; Department of
 Microbiology, Immunology and Molecular Genetics
 UCLA
 Los Angeles, CA

John S. MacGregor, MD, PhD
 Professor of Medicine
 Department of Medicine
 University of California San Francisco
 Director, Cardiac Catheterization
 Laboratory and
 Interventional Cardiology
 San Francisco General Hospital
 San Francisco, CA

Kenneth W. Mahaffey, MD
 Associate Professor of Medicine
 Department of Cardiology
 Duke Clinical Research Institute
 Associate Professor of Medicine
 Department of Cardiology
 Duke University Medical Center
 Durham, NC

JoAnn E. Manson, MD, DrPH
 Elizabeth F. Brigham Professor of
 Women's Health
 and Professor of Medicine
 Harvard Medical School
 Chief, Division of Preventive Medicine and
 Co-Director of the Connors Center for
 Women's Health and Gender Biology
 Brigham and Women's Hospital
 Harvard Medical School
 Boston, MA

Srinivas Mantha, MD
 Professor
 Department of Anesthesiology and Intensive Care
 Nizam's Institute of Medical Science
 Hyderabad, India

Daniel B. Mark, MD, MPH
 Director, Outcomes Research
 Duke Clinical Research Institute
 Professor of Medicine
 Duke University Medical Center
 Durham, NC

Anjali Maroo, MD, RVT
 Fellow, Section of Interventional
 Cardiology
 Department of Cardiovascular Medicine
 Cleveland Clinic
 Cleveland, OH

Oscar C. Marroquin, MD
 Assistant Professor
 Department of Medicine
 University of Pittsburgh
 Attending Cardiologist
 Cardiovascular Institute
 University of Pittsburgh Medical Center
 Pittsburgh, PA

Thomas H. Marwick, MB, BS, PhD
 Professor of Medicine
 School of Medicine (Southern Division)
 University of Queensland
 Princess Alexandra Hospital
 Director of Echocardiography
 Department of Cardiology
 Princess Alexandra Hospital
 Brisbane, Australia

William J. McKenna, BA, MD, DSc

Professor of Cardiology
Department of Medicine
University College London
Clinical Director
The Heart Hospital
University College London Hospitals NHS Trust
London, UK

Dennis M. McNamara, MD

Associate Professor
Cardiovascular Institute
University of Pittsburgh
Director, Heart Failure and Transplantation
Program
University of Pittsburgh Medical Center
Pittsburgh, PA

Bernhard Meier, MD

Professor and Head of Cardiology
Department of Cardiology
University Hospital Bern
Chairman
Department of Cardiology
University Hospital Bern
Bern, Switzerland

Fred Morady, MD

Professor
Department of Medicine
University of Michigan Hospital
Director
Clinical Electrophysiology Service
University of Michigan Hospital
Ann Arbor, MI

Srinivas Murali, MD

Professor of Medicine
Drexel University College of Medicine
Director, Division of Cardiovascular Medicine
Director, Gerald McGinness Cardiovascular
Institute
Allegheny General Hospital
Pittsburgh, PA

Ross T. Murphy, MD, MRCPI

Consultant Cardiologist
St. James' Hospital
Dublin, Ireland

Elizabeth G. Nabel, MD

Director
National Heart, Lung, and Blood Institute, NIH
Bethesda, MD

Gerald V. Naccarelli, MD

Bernard Trabin Chair in Cardiology
Professor of Medicine
Chief, Division of Cardiology
Department of Medicine
Penn State University College of Medicine
Chief
Division of Cardiology
The Milton S. Hershey Medical Center
Hershey, PA

L. Kristin Newby, MD, MHS

Associate Professor of Medicine
Department of Medicine/Division of Cardiology
Duke University Medical Center
Durham, NC

Christopher M. O'Connor, MD

Professor of Medicine
Division of Cardiovascular Medicine
Duke University Health System
Chief, Division of Clinical Pharmacology
Duke University Health System
Durham, NC

Peter M. Okin, MD

Professor of Medicine
Division of Cardiology, Department of Medicine
Weill Medical College of Cornell University
Attending Physician
Division of Cardiology, Department of Medicine
New York Presbyterian Hospital
New York, NY

Jeffrey W. Olin, DO

Professor of Medicine (Cardiology)
Zena and Michael A. Wiener Cardiovascular Institute and
Marie-Josée and Henry R. Kravis Center for
Cardiovascular Health
Mount Sinai School of Medicine
Director, Vascular Medicine
Zena and Michael A. Wiener Cardiovascular Institute and
Marie-Josée and Henry R. Kravis Center for
Cardiovascular Health
Mount Sinai School of Medicine
New York, NY

Eric N. Olson, PhD

Professor and Chair
Department of Molecular Biology
University of Texas Southwestern Medical Center
Dallas, TX

Joseph P. Ornato, MD

Professor and Chairman
Department of Emergency Medicine
Virginia Commonwealth University Medical Center
Richmond, VA

Douglas L. Packer, MD

Professor of Medicine
Consultant, Department of Internal Medicine
Division of Cardiovascular Diseases
Co-Director Applied Basic Electrophysiology
Laboratory
Department of Internal Medicine, Division of
Cardiovascular Diseases, Heart Rhythm Services
Mayo Clinic College of Medicine
Professor of Medicine
Consultant, Department of Internal Medicine
Division of Cardiovascular Diseases
Director, Heart Rhythm Services
Department of Internal Medicine, Division of
Cardiovascular Diseases, Heart Rhythm Services
St. Mary's Hospital
Rochester, MN

Pathmaja Paramsothy, MD

Acting Assistant Professor of Medicine
Department of Internal Medicine/Division of
Cardiology
University of Washington/Harborview
Medical Center
Seattle, WA

Thomas A. Pearson, MD, MPH, PhD

Senior Associate Dean for Clinical Research
Albert D. Kaiser Professor and Chair
Department of Community and Preventive
Medicine
University of Rochester
Director, Strong Preventive Cardiology Clinic
University of Rochester Medical Center
Rochester, NY

Mary Ann Peberly, MD

Associate Professor of Medicine and Emergency
Medicine
Department of Emergency Medicine and
The Department of Internal Medicine (Cardiology)
Virginia Commonwealth University Health System—
Medical College of Virginia
Richmond, VA

Frank Pelosi, Jr., MD

Assistant Professor of Medicine
Department of Internal Medicine
University of Michigan Health System
Ann Arbor, MI

Marc S. Penn, MD, PhD

Director, Experimental Animal Lab
Associate Director, Cardiovascular Medicine
Fellowship
Department of Cardiovascular Medicine
Cleveland Clinic
Cleveland, OH

Eric D. Peterson, MD, MPH

Associate Professor
Department of Medicine/Division of Cardiology
Duke University Medical Center
Associate Vice Chair for Quality
Department of Medicine/Division of Cardiology
Duke University Medical Center
Durham, NC

Eric N. Prystowsky, MD

Consulting Professor of Medicine
Duke University Medical Center
Director, Clinical Electrophysiology Laboratory
St. Vincent
Indianapolis, IN

Reed E. Pyeritz, MD, PhD

Professor of Medicine and Genetics
University of Pennsylvania School of Medicine
Chief, Medical Genetics
Hospital of the University of Pennsylvania
Philadelphia, PA

Marlene Rabinovitch, MD

Dwight and Vera Dunlevie Professor of
Pediatric Cardiology
Research Director of Wall Center for Pulmonary
Vascular Diseases
Department of Pediatrics
Stanford University School of Medicine
Staff Cardiologist
Department of Pediatrics
Lucile Packard Children's Hospital
Stanford, CA

Daniel J. Rader, MD

Professor
Department of Medicine
University of Pennsylvania School of Medicine
Director, Preventive Cardiovascular Medicine
Department of Medicine
University of Pennsylvania Health System
Philadelphia, PA

Satish R. Raj, MD, MSCI

Assistant Professor
Department of Medicine and Pharmacology
Vanderbilt University School of Medicine
Attending Physician
Department of Medicine
Vanderbilt University Hospital
Nashville, TN

Norman B. Ratliff, MD

Section Head, Autopsy Service
Professor of Pathology
Cleveland Clinic
Cleveland, OH

Elliot J. Rayfield, MD

Clinical Professor
Department of Medicine
Mount Sinai School of Medicine
Attending Physician
Department of Medicine
Mount Sinai Hospital
New York, NY

Dale G. Renlund, MD

Professor
Department of Internal Medicine
University of Utah School of Medicine
Director
Heart Failure Prevention and Treatment Program
Department of Cardiology
LDS Hospital
Salt Lake City, UT

Shereif H. Rezkalla, MD

Clinical Professor of Medicine
University of Wisconsin Medical School
Director of Cardiovascular Research
Department of Cardiology
Mansfield Clinic
Marshfield, WI

David Robertson, MD

Elton Yates Professor of Medicine, Pharmacology
and Neurology
General Clinical Research Center
Vanderbilt University
Nashville, TN

Dan M. Roden, MD

Director, Oates Institute for Experimental
Therapeutics
Vanderbilt University School of Medicine
Nashville, TN

E. Rene Rodriguez, MD

Adjunct Associate Professor of Pathology
Department of Pathology
Johns Hopkins University School of Medicine
Staff
Department of Anatomic Pathology
Cleveland Clinic
Cleveland, OH

Leonardo Rodriguez, MD

Program Director Advanced Imaging Fellowship
Cardiovascular Imaging Section
Cleveland Clinic
Staff
Department of Cardiovascular Medicine
Cleveland Clinic
Cleveland, OH

Marco Roffi, MD

Staff Cardiologist
Department of Cardiology
University Hospital
Zurich, Switzerland

Michael F. Roizen, MD

Chairman, Division of Anesthesiology
Critical Care Medicine and Comprehensive Pain
Management
Cleveland Clinic
Cleveland, OH

James H. F. Rudd, MD, PhD

British Heart Foundation International Research
Fellow
Imaging Science Laboratory
Mount Sinai School of Medicine
Specialist Registrar
Department of Cardiovascular Medicine
Addenbrooke's and Papworth Hospitals
New York, NY

Peter Rudd, MD

Professor and Chief, General Internal Medicine
Department of Medicine
Stanford University School of Medicine
Department of Medicine
Stanford Hospital and Clinics
Stanford, CA

Joseph F. Sabik III, MD

Program Director, Thoracic Surgery Residency
Department of Thoracic and Cardiovascular Surgery
Cleveland Clinic
Cleveland, OH

Markus Schwaiger, MD

Professor, Department of Medicine
Technische Universitaet Muenchen
Chairman, Department of Nuclear Medicine
Klinikum R.D. Isar D. Tu Muenchen
Muenchen, Germany

Robert A. Schweikert, MD

Staff
Department of Cardiovascular Medicine
Cleveland Clinic
Cleveland, OH

Christine E. Seidman, MD

Department of Genetics
Harvard Medical School
Boston, MA

Srijita Sen-Chowdhry, MA

Fellow in Cardiology
Centre for Cardiology in The Young
University College, London

Elena B. Sgarbossa, MD

Weston, FL

Cathy A. Sila, MD

Cleveland Clinic
Cleveland, OH

Nicholas G. Smedira, MD

Surgical Director, Kaufman Center for
Heart Failure
Department of Cardiovascular and Thoracic
Surgery
Cleveland Clinic
Cleveland, OH

Daniel H. Solomon, MD, MPH

Assistant Professor
Department of Medicine
Harvard Medical School
Assistant Professor
Division of Rheumatology
Brigham and Women's Hospital
Boston, MA

David Spragg, MD

Department of Medicine, Cardiology
The Johns Hopkins Medical
Institutions
Johns Hopkins University
Baltimore, MD

Randall C. Starling, MD, MPH

Head, Section of Heart Failure and Cardiac
Transplant Medicine
Medical Director, Kaufman Center for
Heart Failure
Department of Cardiovascular Medicine
Cleveland Clinic
Cleveland, OH

William J. Stewart, MD

Associate Professor of Medicine
Department of Cardiovascular Medicine
Cleveland Clinic Lerner College of Medicine
Staff Physician
Department of Cardiovascular Medicine
Cleveland Clinic
Cleveland, OH

Neil J. Stone, MD

Professor of Clinical Medicine (Cardiology)
Feinberg School of Medicine
Northwestern University
Medical Director, Vascular Center of the Bluhm
Cardiovascular Institute and Attending Physician
Northwestern Memorial Hospital
Chicago, IL

Lynda A. Szczech, MD, MSCE

Associate Professor of Medicine
Department of Medicine/Nephrology
Duke University Medical Center/DCRI
Durham, NC

Carmela D. Tan, MD

Associate Staff
Department of Anatomic Pathology
Cleveland Clinic
Cleveland, OH

W. H. Wilson Tang, MD

Assistant Professor
Department of Medicine
Cleveland Clinic Lerner College of Medicine of Case
Western Reserve University
Staff Physician
Department of Cardiovascular Medicine
Cleveland Clinic
Cleveland, OH

Victor F. Tapson, MD

Professor of Medicine
Director, Center for Pulmonary Vascular Disease
Division of Pulmonary and Critical Care Medicine
Duke University Medical Center
Durham, NC

Mark B. Taubman, MD

Director, Cardiovascular Research Institute
University of Rochester Medical Center
Paul N. Yu Professor and Chief of Cardiology
Department of Medicine/Cardiology
Strong Memorial Hospital
Rochester, NY

David O. Taylor, MD

Professor of Medicine
Department of Cardiovascular Medicine
Cleveland Clinic
Cleveland, OH

Patrick Tchou, MD

Co-Section Head, Section of Cardiac
Electrophysiology and Pacing
Department of Cardiovascular Medicine
Cleveland Clinic
Cleveland, OH

Ayalew Tefferi, MD

Professor
Department of Hematology
Mayo Clinic
Consultant
Department of Hematology
Mayo Clinic
Rochester, MN

James D. Thomas, MD

Professor, Department of Biomedical Engineering
Case Western Reserve University
Charles and Lorraine Chair of Cardiovascular
Imaging
Department of Cardiovascular Medicine
Cleveland Clinic
Cleveland, OH

Paul D. Thompson, MD

Professor of Medicine
University of Connecticut School of Medicine
Director of Cardiology
Cardiology Division
Hartford Hospital
Hartford, CT

Xian-Li Tian, MD

Department of Molecular Cardiology
Lerner Research Institute
Cleveland Clinic
Cleveland, OH

E. Murat Tuzcu, MD

Professor of Medicine
Department of Cardiovascular Medicine
Cleveland Clinic Lerner College of Medicine of
Case Western Reserve University
Interventional Cardiologist
Department of Cardiovascular Medicine
Cleveland Clinic
Cleveland, OH

Alec S. Vahanian, MD

Professor
Department of Cardiology
Paris Université VII
Chief
Department of Cardiology
Hôpital Bichat
Paris, France

Eric Van Belle, MD, PhD

Professor of Medicine
Cardiology Department
University of Lille II Medical School
Associate Director of the Cardiac Catheterization and
Interventional Cardiology Unit
Cardiology Department
Centre Hospitalier Régional de Lille
Lille, France

Frans J. Van de Werf, MD, PhD

Professor of Cardiology
Department of Cardiology
University of Leuven
Chief, Department of Cardiology
Gasthuisberg University Hospital
Leuven, Belgium

George F. Van Hare, MD

Professor of Pediatrics
Department of Pediatric Cardiology
Stanford University
Director, Pediatric Arrhythmia Center at UCSF
Stanford
Lucille Packard Children's Hospital
Palo Alto, CA