



# China Show Flat & Earbook 2009

中国样板间年鉴

上

深圳市创扬文化传播有限公司编

《 华中科技大学出版社

## 图书在版编目 (CIP) 数据

2009中国样板间年鉴 (上) / 深圳市创扬文化传播有限公司 编  
—武汉: 华中科技大学出版社, 2010.1  
ISBN 978-7-5609-5585-8

I.2… II.深… III.住宅-室内设计-建筑设计-图集 IV.TU241-64

中国版本图书馆CIP数据核字 (2009) 第131523号

## 2009中国样板间年鉴 (上)

深圳市创扬文化传播有限公司 编

出版发行: 华中科技大学出版社 (中国·武汉)

地 址: 武汉市武昌珞喻路1037号 (邮编: 430074)

出 版 人: 阮海洪

责任编辑: 吴亚兰

责任监印: 张正林

装帧设计: 张 璐

印 刷: 利丰雅高印刷 (深圳) 有限公司

开 本: 1270 mm × 965 mm 1/16

印 张: 37.75 (上、下册)

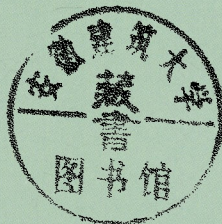
字 数: 336千字

版 次: 2010年1月第1版

印 次: 2010年1月第1次印刷

书 号: ISBN 978-7-5609-5585-8/TU · 680

定 价: 466.00元 (上、下册)



投稿热线: (010)64155588-8000 hzjztg@163.com

销售电话: (022)60266190, 60266192, 60266193, (022)60266199 (兼传真)

网 址: www.hustpas.com; www.hustp.com

(凡购本书, 如有缺页、脱页, 请向本社发行部调换)

China Show  
Flat & Carbook

2009 中国样板间年鉴 上

深圳市创扬文化传播有限公司 编

《 华中科技大学出版社

# 序言 I

## Preface I



样板房设计不同于普通家居设计的是其更讲究设计的完整性，从平衡功能、色彩、材料、配饰等细节着手，我遇到的大多数业主都是要求设计完整性的，从而成就了我们的最终完整的作品。

就设计风格而言，目前国内大多数客户欣赏的依旧是现代风格，简约欧式风格、田园风格、后奢华风格……由于地理、人文、环境的不同，这些风格在色调及表现手法上也略有差异，在这里不再细说。那么关于风格，我更关注的是是否适合客户的生活要求。就像赞美一样，“你穿的这件衣服很漂亮”固然让你心情好。但“这件衣服简直太适合你了！”才是最好的赞美。还有就是心灵层面的，我希望我的设计对于居住的人来说是一个心灵层面的“家”，如于丹老师讲的“此心安处是我家”。很多业主都会要求让家变得温馨，事实证明，这个词对于不同的人答案是大相径庭的。每个人的喜好不同，家也是不同的，就像世界上只有一个你一样，设计师会将你的喜好与房子适合的设计平衡到位。给你一个独一无二适合你的家。

北京东易日盛装饰有限公司 赵明明

2009年6月

The design of show flat is different from ordinary home design because it pays more attention to completeness in details such as balanced functions, colors, materials, decorations and so on.

The most owners I meet require a complete home design, which becomes the base to create our final completeness of design.

As to design style, what most domestic clients currently appreciate are still modern style, European simple style, country style, post-luxury style, etc. As a result of different geographies, humanities, and environments, those styles are of slight difference in colors and technique of expression. However, what I pay attention to is whether it meets the owner's requirement for life. Just like a sentence of appreciation "The coat in you is very beautiful." you will surely feel very pleased while, I think, "The coat is quite fit for you." is the best praise. In level of spirit, I hope that my design is for its owner a spiritual home just like Master Yu Dan's saying "The place where I feel calm and peaceful is my home". Many owners often say that their requirement is to make home warm, however, the answer is proved to be different to different people.

If the requirement can be generalized just in one word like that, the owner must be an inexperienced person or one without any requirement for life. Different people have different fondness and therefore, homes are different to different people just as you are the only one in this world. The designer will make a good balance between your fondness and the design suitable for house giving you a unique home fit for you.

Beijing Dongyi Rising-sun Co., Ltd. Zhao Mingming

2009.6

## 序言II

### Preface II

家！是每个人一辈子的依靠。走进样板房，细细聆听设计的声音、想象家的样子。幸福的空间感动每一位回家人的心。恋家、爱家就从这里开始！

现今由于信息发达，人们取得各项艺术、文化消息亦趋简便。对“家”的概念也逐渐从只是由材料及设备所组合而成的空间走出，进而走向艺术与文化。对现代人来说“家”的意义不再只是一个遮风避雨的地方，而是要求体现对生活的艺术与态度。而样板房正扮演传递这项信息给每位购房者的重要角色，透过样板房每位购房者开始想象家的样子，而设计师就是赋予样板房这项新使命的推手。

从法国巴黎艺术学院与美国哈佛大学完成学业，回国从事室内设计工作将近20年的我，除具备专业空间设计概念，亦具备绘画、雕塑等专长，同时亦经常出国考察、参观，了解各国流行趋势。故自从事设计工作开始，即致力推动将“艺术与空间结合”。每件作品都是通过不断地与业主沟通再沟通，将绘画与雕塑等艺术创作融入设计，赋予空间生命力，完成每一件为业主量身定做、独一无二的居住空间。

当“艺术与空间”相结合，艺术就不再遥不可及，也不再只是个装饰品，家具也不再只是硬生生的工具，而是可以与空间相呼应的艺术品。让空间与艺术互相对话，走入人的生活与人贴近，静静聆听设计的声音，使空间充满生命力。将无形的艺术流于有形的生活，提升生活空间的质量，是身为艺术工作者的我所致力推广的，也将以此为使命。



UNI Designgroup/京磐设计有限公司 陶继纲

2009年6月于台北

Home is something one relies on all his life. Entering the show flat, you would appreciate the design leisurely and dream of a real home. The cheerful space always touches everyone's heart to go back home. Here, you will feel reluctant to get away from home.

Nowadays, owing to advanced information technology, it becomes more convenient for people to acquire information about all arts and culture. Correspondingly, the concept of "home" varies ranging from that it is only a space that is composed of some materials and pieces of equipment to that it goes towards arts and culture. For modern people, "home" is no longer only a shelter from the wind and rain but an art and an attitude required to life, which is just what the show flat functions to transmit to every one. Via the show flat, everyone begins to dream of what should be like a real home, while the designer is the activator to make the show flat endowed with this mission.

I have engaged in the interior design for 20 years since I returned after my graduation from Paris Arts College in France and Harvard University in America. I have professional knowledge and ideas of space designs, and also I am good at painting and carving. Furthermore, I often go abroad to make investigation and pay visits to absorb fashion trends of the world. So since I worked at the design, I have been committing myself to the combination between art and space. Each time, I communicate with the owner over and over again to try to infuse creation of art like painting and carving into the design endowing the space with vitality to create a tailor-made and unique living space for the owner.

When art is combined with space, art becomes no longer that obscure and out of reach, and also no longer only a piece of decoration. And furniture is no longer solid as tools, but arts echoing the space, which helps make a dialogue between art and space and make the space into people's life and close to people. Voices of the design make the space full of vitality. To integrate intangible arts into tangible life to enhance quality of living space is what I apply myself to and also my mission as an art worker.

Jingpan Design Co., Ltd. Tao Jigang

China Taipei 2009.6



006	随园 Suiyuan Garden
010	汇创名居 Huichuang Mingju
014	东胥香花园 Dong Xuxiang Garden
018	金禧花园金桐苑 Jingtong Court of Jin Xi Garden
022	大儒世家2期 Phase 2,Daru Shijia
026	融桥锦江 Rongqiao Jinjiang
030	三盛巴厘岛 San Sheng Bali Island
034	米朗 Mi Lang
038	紫阳 Zi Yang
042	圣得恒业 Sheng De Heng Ye
046	流星花园 Liuxing Garden
050	香江枫景 Xiang Jiang Maple Scenery
054	金华街隐哲样品屋 Yinzhe Show Flat,Jinhua Street
058	素雅空间 Simple and Elegant Space
062	木栅白公馆 Mushan White Residence
068	南港凌宅 Nangang Ling Residence
074	宝田雅苑01户型 01 household type of BaoTianYaYuan
078	净界 Chear Sector
082	鑫苑景园 Xinyuan Garden
086	良茂大直罗马假期样品屋 Roman Holiday Model Houses in Dazhi,Liangmao
090	良茂大直巴黎花园样品屋 Sample House,Paris Garden,Liang Mao
093	江畔奢华 Riverbank Luxury
096	江南水都杰座 Masterpiece, Jiang Nan Watery City
100	凤凰池新村陈宅 Chen's Residence, Xin Village, Phoenix Pond
104	漕河景苑 Mansion Huang of Caohe Jingyuan
108	长大卧琥样板房之时尚之花 The Example Room of Changwohu a flower of fashion
110	纯静如白 Pure as White
112	纯色生活 Life of Purity
116	华商领寓样板房 Model Room of Hua Shang Ling Yu
120	金汇豪庭 Jinhui Luxury
124	灰城勿扰 Huicheng Wurao
128	兰亭新天地 Orchid Pavilion New World
132	临安春天样板间 Show Flat, Lin'an Spring
136	虞师里大厦 Yu Shili Building

# 目录

Liu's Residence, Shui An Chang Di 水岸长堤刘公馆	140
Hong's Residence, Taipei 台北洪公馆	144
Violet Amusement Park 紫色游乐园	148
Zhu Residence, Yunding, Taipei 台北云顶诸宅	152
The Sky in Water 水印长天	156
Green Oasis , Wuyi 武夷绿洲	160
Zhengda 1st Street 政大一街	166
Show Flat, Siji Taipei 四季台北样品屋	168
Apartment , Welsha Avenue 威尔夏大道公寓	174
Weimar Original Villa 魏玛原墅	178
Wanke Garden A5, Wuxi 无锡万科魅力之城-A5	182
Renheng Yuhua 仁恒雨花	186
Lvyuan Gingko Park 绿园银杏苑	190
Glamour 魅	194
Life, it refuses mediocrity 生活, 拒绝平庸	198
CLASS Serviced Apartment, Xingyuanli, Beijing 北京新源里CLASS酒店式公寓1	202
Watery Pavilion and Flower City, Chengde 承德水榭花都	208
Show Flat, Ltem 3, Yaojiang Wending Park, Hangzhou 杭州耀江文鼎苑三期样板间	212
Show Flat, the 5th Avenue, Shenyang 沈阳第五大道样板间	216
Shimao Waitan 世茂外滩	220
Dahua Wwst Stream 大华西溪	226
05 household type of BaoTianYaYuan 宝田雅苑05户型	234
Chinese Fontainbleau 枫丹白鹭	238
Jingzh Qi Zhi Yu 净染之余	242
Show Flat of Taste · Art 品味 · 艺术样板间	248
Paling Lou's Residence 木栅罗公馆	252
Shanghai Jinshan Zan cheng · Mangrove 上海金山赞成 · 红树林	258
One Case of Chinese style 一中案	262
Shengshi Huacheng 盛世华城	266
Nan'an Flower City -Cheng's Residence 南岸花城-陈宅	268
No.143, Zhonglv Quan 棕榈泉143号	274
Great Mix Match Trends 浓情混搭风潮	280
Inside Lake, Clear Reflection 内湖翠映	284
Gome Top City 国美第一城	288



# Suiyuan Garden



设计公司：福建四方·商龙室内设计机构

设计师：商 龙

项目面积：80平方米

装饰材料：水泥漆、绒布、白枫木

## 随园

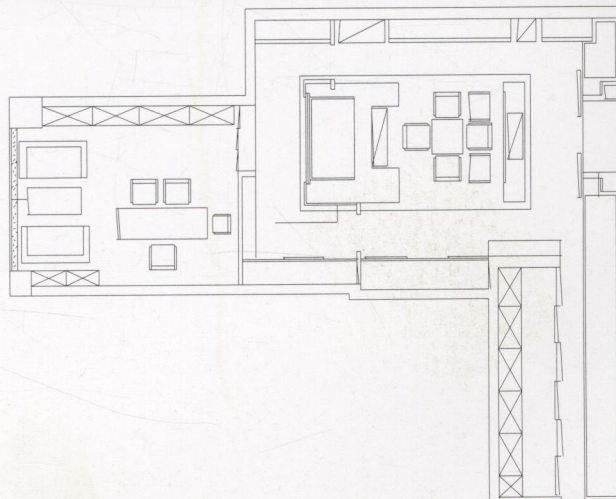


此店位于室内，考虑到其经营性质与商业性，在门面设计构思中，采用三坊七巷的“坊”的理念，结合中国传统的大红门，加以烘托与简化，使其既不失文化氛围，在视觉上又显得大气耀眼，再以玻璃展台与整个门面结合，让其功能性与人文性巧妙地融为一体，暗藏灯的冷光与明装射灯的暖光的明暗效果与古典家具结合，整个门面更显美观与不凡。

在空间的深处结合店主的需要，设计了一个私密性较强的办公室，结合空间中轴线的设计，使办公室大门位于屏风之后，格局采用复古的设计手法，让整个公共空间饱满，又使原本不大的空间更具进深感。办公室的设计整体以素雅为主格调，结合灯光与明式家具的搭配使办公室不失舒适的感受之余也具备办公的功能，整个店的氛围得到和谐的表达与诠释。

This shop is located indoor. Considering of its business type and commerciality, using the concept of "Fang" of the Three Fangs Qi Xiangs in the facade design ideas. Combining with Chinese traditional Dahongmen to foil and simplify, so it does not lose the cultural atmosphere, but looks bright and brilliant visually. Then there is a glass booth combined with the entire façade, making its functionality and humanity integrated skillfully. The bright-dark effect of dark lights' luminescence and spotlights' warm light combines with classical furniture, the entire facade is even more beautiful and extraordinary.

In deep space, to meet the needs of the owner, there will be a privacy office with stronger confidentiality, combined with the design of space axis, making the office door located behind the screens. The pattern uses retro design technique, so the entire public space appears full while the original little space appears more deeply. The overall design of the office is based on simple but elegant style, with lighting and bright furniture matching together, the comfortable feeling and working function of the office cannot be lost. The atmosphere of the entire store is expressed and interpreted harmoniously.







# Huichuang Mingju



设计公司：福州好日子装饰工程有限公司

施工单位：福州好日子品筑欧洲生态级施工

设计师：唐堃烽

项目面积：180平方米

装饰材料：露华浓瓷砖、富林地板、印象壁纸、佰汇移门、万事达灯饰

## 汇创名居



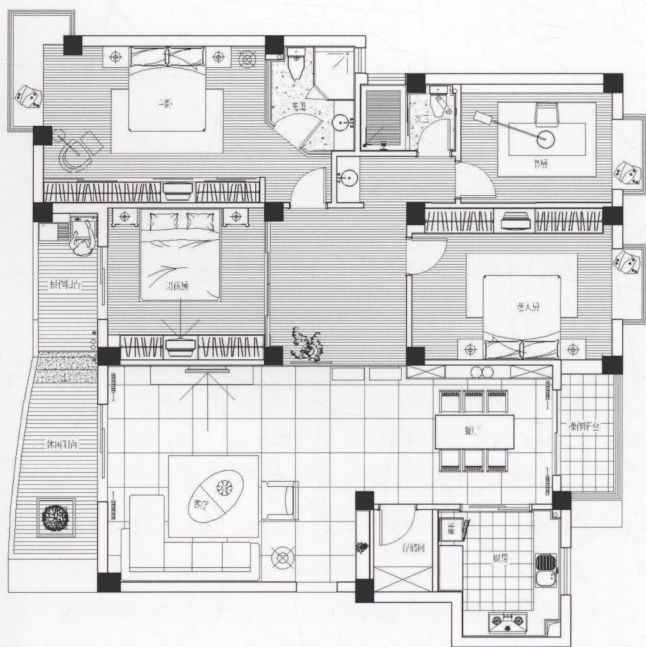
设计师在整个空间中运用了一种自然的风格，力图营造出平和、质朴的居室氛围。同时，巧妙加入一些趣味性的设计，使整个空间彰显出“简约的写意”和“自然”的主题。

简洁与实用是主调，本案在材料的选择和运用上无不凸显出其主题。身处其中、细细品味，方能感受其间的细腻和巧妙。大面积的铁锈纹仿古砖铺面，大面积的面板饰面，温和色调调和的氛围，浪漫灯光设计的光影效果等，无不在细节中体现出设计师对简约的写意手法的熟练。

The designer uses a natural style in the whole space aiming at creating a peaceful and simple atmosphere. Meanwhile, with some interesting design skillfully added, the space shows its theme "contracted liberal style" and "nature".

It makes concision and practicability as the main tune. This case makes its theme stand out in material's selection and use. Only if one places himself in and carefully appreciate, he would feel its refinement. Large-sized imitation antique bricks with rust streak paving, the large-scale front panel surfacing, the atmosphere the warm color hue makes, and the shadow impact the romantic lighting creates all embody the designer's skillful use of contracted liberal style in details.







# Dong Xuxiang Garden



设计公司: LUXE&青荷建筑装饰设计有限公司

设计师: 戴立

项目面积: 117平方米

装饰材料: 榆木地板、毛竹、松木染色

## 东胥香花园



本案以现代风格为主，简约、实用，玄关与鞋柜相连接，上方采用镂空的格式加强线条感，柜上放置柔美手型的艺术品，同样在走道的玄关上也采用了白色木质的镂空墙面，姿态美妙的工艺品使整个格调变得浪漫、时尚，客厅的色调呼应也相当微妙，灰黑色的地毯衬托在洁白的沙发下方，设计师在墙面更微妙地选用了灰黑的长条画，整个空间色调交融，淋漓尽致。

This case adopts modern style, very simple and practical. The vestibule is linked with shoe cabinet, the top of which is designed in a fretwork style to strengthen the feel of lines and on which is refined handicrafts placed. Similarly, the vestibule of walkway is also designed with fretwork wall surface of white wooden texture. Graceful handiwork makes the atmosphere of the space romantic and fashionable. The different colors in the space also match very subtly. Gray black rug are carpeted contrastively beneath the pure white sofa and, in addition, the designer selects grey black bar-painting as the background of the wall creating a perfect space where various color hues mingle together harmoniously.

