

局部解剖學圖解
ILLUSTRATIONS
OF
REGIONAL ANATOMY

(頭，頸及中樞神經系統)

原 著 E. B. Jamieson

主 譯 張 家 瑜

局部解剖學圖解
ILLUSTRATIONS
OF
REGIONAL ANATOMY

頭及頸部 中樞神經系統
HEAD AND NECK CENTRAL NERVOUS SYSTEM

原著 E. B. JAMIESON

主譯 張家瑜

助譯 王德昭 徐振邦

1953

局部解剖學圖解

(卷三 頭及頸部 中樞神經系統)

ILLUSTRATIONS OF REGIONAL ANATOMY

(Vol. III HEAD & NECK, CENTRAL NERVOUS SYSTEM)

版權所有

一九五二年十月付印

一九五三年七月初版

原著者 E. B. Jamieson

主譯者 張家瑜

助譯者 王德昭 徐振邦

出版者 印鍾杰 石信華

發行者 文林書店 上海溧陽路一三七七弄六號

同華圖書出版社 上海山海關路四〇六弄十五號
電話：六〇八三三

印刷者 金利印刷所 上海塘沽路六四六弄三十八號
電話：四五四七八

定價人民幣 70000 元

初版 0001—3500

序 言

醫學為科學之一部份，無論診斷治療，莫不以論理學為歸依，藉一切目所能見，耳所能聞，鼻所能嗅，手指所能觸得之徵候，考慮思索而得結論，千萬醫家藉同樣之徵候則亦得同樣之結論。至於用藥，端賴試驗使用已久功效確實之適當用量，而手術則不惟將遭遇何種機構一一了然，即其病灶所在，體積大小，改變程度亦莫不均在意料中。故醫家治病，正如捕捉罪犯之必求真贓實據，並非妄加揣測，濫投藥物，即作了事，此其所以能診斷確實，處理得當，更能集體合作，共相切磋，預料結果，為病人造福也。

解剖學為醫學之地理，地理不明，則不得其途徑，是以紀元前460年 Hippocrates 時起，醫學雖已初露曙光，但其昌明則於 Andrea Vesalius (1514-1564) 夜竊盜屍研究解剖學，出版名作「人體之構造七冊 De Corporis Humani Fabrica Libri Septem」之後。然人體構造複雜，頭緒紛繁，解剖學一科，不惟學者感到困難，即執醫業者亦難免不有日久偶忘之虞。

我國科學落後，醫學著作每患不敷應用，解剖學之文獻更寥若晨星。見英國 Jamieson 所著 Illustrations of Regional Anatomy 一書，以其精簡易明，爰為轉譯，非敢續貂掠美，意在便利讀者，並求科學之普及。原書色彩較為缺乏真實性，然而層次分明，未始不可作模型圖看。所幸印刷方面經使用新技術之後，已與原書不相上下，譯名方面亦曾盡力推敲，對於不甚妥當之詞，逐漸更改，是以容或與習常所用者不同，是否得當，尙希 先進予以指正。

本書承王德昭、徐振邦、劉造生諸君鼎力協助，謹此誌謝。

一九五三年三月

張 家 瑜

圖 片 之 目 錄

CONTENTS OF PLATES

頭及頸部 HEAD AND NECK

	頁數
1. 顛底之上面 Upper Surface of Base of Skull	206
2. 頭顱之矢狀切面 Sagittal Section of Skull	207
3. 頭部之矢狀切面 Sagittal Section of Head	208
4. 切經枕骨大孔之冠狀切面 Coronal Section passing through Foramen Magnum	209
5. 鞍隔膜及小腦幕 Diaphragma Sellae and Tentorium Cerebelli	210
6. 蝶竇及海綿竇 Sphenoidal and Cavernous Sinuses	211
7. 顛底之靜脈竇 Venous Sinuses of Base of Skull	212
8A. 三叉神經節及上眶裂 Trigeminal Ganglion and Superior Orbital Fissure	213
B. 眼眶之四壁 Walls of Orbit	213
9. 眼球之切面 Section of Eyeball	214
10A. 眼球之被膜及肌膜鞘 Coats and Fascial Sheath of Eyeball	215
B. 眼球之懸韌帶 Suspensory Ligament of Eyeball	215
11. 由側面觀察眼眶之各肌肉及神經 Muscles and Nerves of Orbit, seen from the side	216
12A. 眼血管 Ophthalmic Vessels	217
B. 鼻睫狀神經 Naso-ciliary Nerve	217
13. 眼瞼之各神經及瞼板 Nerves and Tarsi of Eyelids	218
14. 眼 The Eye	219
15. 淚器 Lacrimal Apparatus	220
16. 面部及頭顱之前面 Face and Front of Skull	221
17. 頭顱之側面 Side-view of Skull	222
18. 面部各肌 Facial Muscles	223
19. 面神經及其屬枝 Facial Nerve and its Branches	224
20. 腮腺及頭部各淺神經 Parotid Gland and Superficial Nerves of Head	225
21. 腮腺深部與各結構之關係 Deep Relations of Parotid Gland	226
22. 頭部之淺血管 Superficial Vessels of Head	227
23. 顛下區及顎下區 第一階段 Infratemporal and Submandibular Regions First Stage	228
24. 頭顱側面之一部份 Part of the Side of Skull	229
25. 顛底之下面 Lower Surface of Base of Skull	230
26. 顛下區及顎下區 第二階段 Infratemporal and Submandibular Regions Second Stage	231
27. 顛下區及顎下區 第三階段 Infratemporal and Submandibular Regions Third Stage	232
28. 顛下區及顎下區 第四階段 Infratemporal and Submandibular Regions Fourth Stage	233

29 A.	上顎神經及其屬枝	Maxillary Nerve and its Branches	234
B.	上顎動脈及其分枝	Maxillary Artery and its Branches	234
30.	口腔隔膜	Diaphragma Oris	235
31.	切經顎下區之各冠狀切面	Coronal Sections through Submandibular Region	236
32.	切經口唇及面頰之切面	Section through Lip and Cheek	237
33.	舌下區	Sublingual Region	238
34.	腭, 扁桃腺, 及舌	Palate, Tonsils, and Tongue	239
35.	骨腭(硬腭)	Bony Palate	240
36 A.	外鼻之骨骼	Skeleton of External Nose	241
B.	鼻中隔	Septum of Nose	241
37.	鼻腔側壁之骨骼	Skeleton of Side-wall of Nose	242
38.	切經鼻腔, 口腔及喉部之矢狀切面	Sagittal Section through Nose, Mouth, and Larynx	243
39 A.	鼻咽及鼻腔之側壁	Side-wall of Nose and Naso-pharynx	244
B.	左側耳咽管(歐氏管)之軟骨	Cartilage of Left Pharyngo-tympanic (Auditory) Tube	244
40.	切經眼眶, 鼻腔及口腔之冠狀切面	Coronal Section through Orbit, Nose, and Mouth	245
41.	即在舌以上之水平切面	Horizontal Section immediately above Tongue	246
42.	咽腔之前壁	Anterior Wall of Cavity of Pharynx	247
43.	各縮咽肌	Constrictors of Pharynx	248
44.	切經耳部之水平切面	Horizontal Section through the Ear	249
45.	中耳與附近各結構之關係	Relations of Middle Ear	250
46.	鼓索及中耳之外側壁	Chorda Tympani and Lateral Wall of Middle Ear	251
47.	中耳之內容	Contents of Middle Ear	252
48 A.	聽神經	Auditory (Acoustic) Nerve	253
B.	左耳廓	Left Auricle	253
49.	頸部淺層之各結構	Superficial Structures in Neck	254
50.	頸部之假想橫切面	Schematic Cross-section of Neck	255
51.	包圍層肌膜及氣管前肌膜; 甲狀腺內側與各結構之關係	Investing and Pretracheal Fasciae; Medial Relations of Thyroid Gland	256
52.	頸部前面之正中區	Anterior Median Region of Neck	257
53.	脊椎前區	Prevertebral Region	258
54 A.	喉部各軟骨	Cartilages of Larynx	259
B.	喉部各彈力膜及肌肉	Membranes and Muscles of Larynx	259
55 A.	喉部各肌肉	Muscles of Larynx	260
B.	喉之內部	Interior of Larynx	260
56.	頸根部	Root of Neck	261
57.	頸部之三角	Triangles of Neck	262
58.	頸根部及頸後三角	Root and Posterior Triangle of Neck	263
59.	即在第三胸椎以上之橫切面	Cross-section immediately above Third Thoracic Vertebra	264

60. 經過頸胸膜而剖開之矢狀切面 Sagittal Section through Cervical Pleura	265
61. 莖突各肌及頸動脈 Styloid Muscles and Carotid Arteries	266
62. 臂神經叢 Brachial Plexus	267
63. 頸部交感神經幹之各分枝 Branches of Sympathetic Trunk in Neck	268
64. 枕骨下區 Suboccipital Region	269

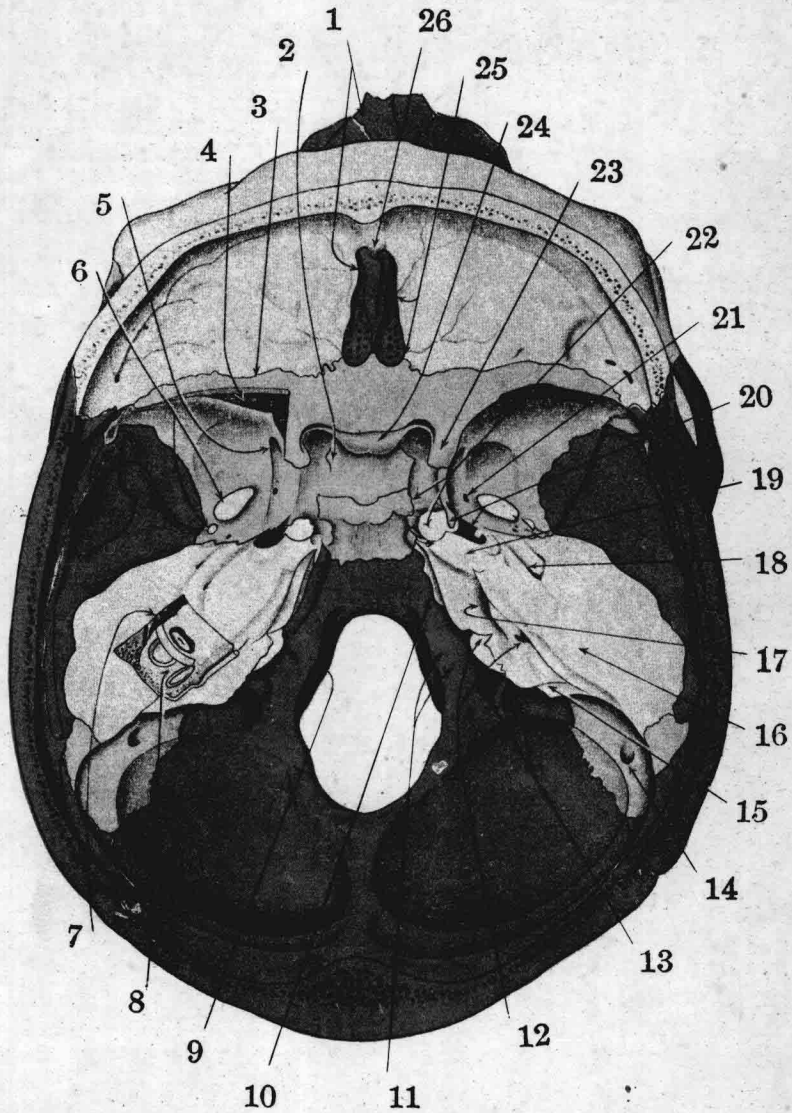
中樞神經系統 CENTRAL NERVOUS SYSTEM

1A. 腦之五個分區 The Five Divisions of Brain	270
B. 胼胝體之正中切面及其附近之區域 Median Section of Corpus Callosum, and parts near it	270
2. 腦之上面 Upper Surface of Brain	271
3. 腦底 Base of Brain	272
4. 腦神經之附着處 Attachments of Cranial Nerves	273
5. 大腦半球之上外側面 Supero-lateral Surface of Cerebral Hemisphere	274
6. 腦部之運動區及知覺區 Motor and Sensory Areas	275
7A. 腦島蓋 Opercula Insulae	276
B. 腦島 Insula	276
8A. 大腦上外側面之動脈 Arteries of Supero-lateral Surface	277
B. 大腦上外側面之靜脈, 及靜脈竇 Veins of Supero-lateral Surface, and Venous Sinuses	277
9. 腦之正中切面 Median Section of Brain	278
10A. 大腦半球內側面之動脈 Arteries of Medial Surface of Hemisphere	279
B. 大腦半球內側面之靜脈, 及靜脈竇 Veins of Medial Surface, and Venous Sinuses	279
11. 大腦半球下面 Inferior Surface of Cerebral Hemisphere	280
12. 大腦半球下面之血管 Vessels of Inferior Surface of Hemisphere	281
13. 各腦室之輪廓 Outline of Ventricles of Brain	282
14. 胼胝體及聯合束, 上面觀 Corpus Callosum and Association Bundles, from above	283
15. 切開大腦及腦幹之冠狀切面 Coronal Section through Cerebrum and Brain-stem	284
16. 帶及大腦穹窿, 內側觀 Cingulum and Fornix, from medial side	285
17. 大腦穹窿及胼胝體, 內側觀 Fornix and Tapetum, from medial side	286
18. 側腦室之下角及後角 Inferior and Posterior Horns of Lateral Ventricle	287
19. 海馬齒筋膜(海馬齒回), 下面觀 Gyrus Dentatus, from below	388
20. 大腦穹窿及側腦室, 上面觀 Fornix and Lateral Ventricle, from above	289
21. 脈絡組織及脈絡叢 Tela Chorioidea and Choroid Plexuses	290
22A. 切開側腦室下角之冠狀切面 Coronal Section through Inferior Horn	291
B. 切開側腦室後角之冠狀切面 Coronal Section through Posterior Horn	291
23. 側腦室下角之頂及其附近各構造 Roof of Inferior Horn and the Parts near it	292

24. 腦底之核, 下面觀 Basal Nuclei, from below	293
25. 豆狀核及大腦上縱束 Lentiform Nucleus and Superior Longitudinal Bundle	294
26A. 切開大腦, 中腦及腦幹之冠狀切面 Coronal Section through Cerebrum, Mid-brain, and Pons	295
B. 在腦幹之前, 切開大腦之冠狀切面 Coronal Section through Cerebrum, in front of Brain-stem	295
27A. 顳葉末端附近之冠狀切面 Coronal Section near Temporal Pole, looked at from in front	296
B. 顳葉末端附近之冠狀切面 Coronal Section near Temporal Pole, looked at from behind	296
28. 在蒼白球以上之大腦水平切面 Horizontal Section of Cerebrum at a level above Globus Pallidus	297
29. 在蒼白球處之大腦水平切面 Horizontal Section of Cerebrum at the level of Globus Pallidus	298
30A. 大腦前連合及紋狀體, 前面觀 Anterior Commissure and Corpus Striatum, from in front	299
B. 大腦前連合及鈎束, 上面觀 Anterior Commissure and Uncinate Bundle, from above	299
31. 大腦前連合, 下面觀 Anterior Commissure, from below	300
32. 放射狀冠及內囊 Corona Radiata and Internal Capsule	301
33. 上下縱束及鈎束 Longitudinal and Uncinate Bundles	302
34. 視丘及腦幹之背面觀 Dorsal View of Thalami and Brain-stem	303
35. 腦底之核及腦幹, 側面觀 Basal Nuclei and Brain-stem, from the side	304
36. 中腦及附近構造之橫切面 Cross-sections of Mid-brain among its Surroundings	305
37. 光感之傳導徑路 Path of Conduction of Light	306
38A. 小腦之上面 Upper Surface of Cerebellum	307
B. 在第四腦室之後切開小腦之冠狀切面 Coronal Section of Cerebellum behind Fourth Ventricle	307
39A. 小腦及下髓帆(後髓帆)之下面 Lower Surface of Cerebellum and Inferior Velum	308
B. 齒狀核 Nucleus Dentatus	308
40A. 內側蹄係 Medial Lemniscus	309
B. 在第五腦神經等高處之橋腦切面 Pons at the level of Fifth Nerve	309
41A. 橋腦最下部處之切面 Section at the level of Lowest Part of Pons	310
B. 延髓上半部處之切面 Section through Upper Half of Medulla Oblongata	310

42.	胼胝體及後腦之正中切面, 以顯示各膜	Median Section of Corpus Callosum and Hind-brain, showing Membranes	311
43A	下髓帆(後髓帆), 上面觀	Inferior Medullary Vela, from above	312
B.	第四腦室蓋頂點處之冠狀切面	Coronal Section through Peak of Roof of Fourth Ventricle	312
44.	第四腦室底	Floor of Fourth Ventricle	313
45.	腦幹之動脈	Arteries of Brain-stem	314
46.	大腦之動脈	Cerebral Arteries	315
47.	脊神經及各脊髓段之平面, 與胸腔之縱隔障	Levels of Spinal Segments and Nerves; and Mediastinum of Thorax	316
48.	頸部脊髓之橫切面	Cross-section of Cervical Region of Spinal Cord	317
49.	脊髓及正規之脊神經	Spinal Cord and a Typical Nerve	318
50.	運動徑路	The Motor Path	319
51.	感覺徑路	The Sensory Paths	320
	索引	Index	i-xii

頭 及 頸 部
與
中 樞 神 經 系 統



顛底之上面

顱底之上面
UPPER SURFACE OF BASE OF SKULL

由眶下緣至外耳道上緣之平面已置于水平位置
(In the position in which the eye-ear plane is horizontal)

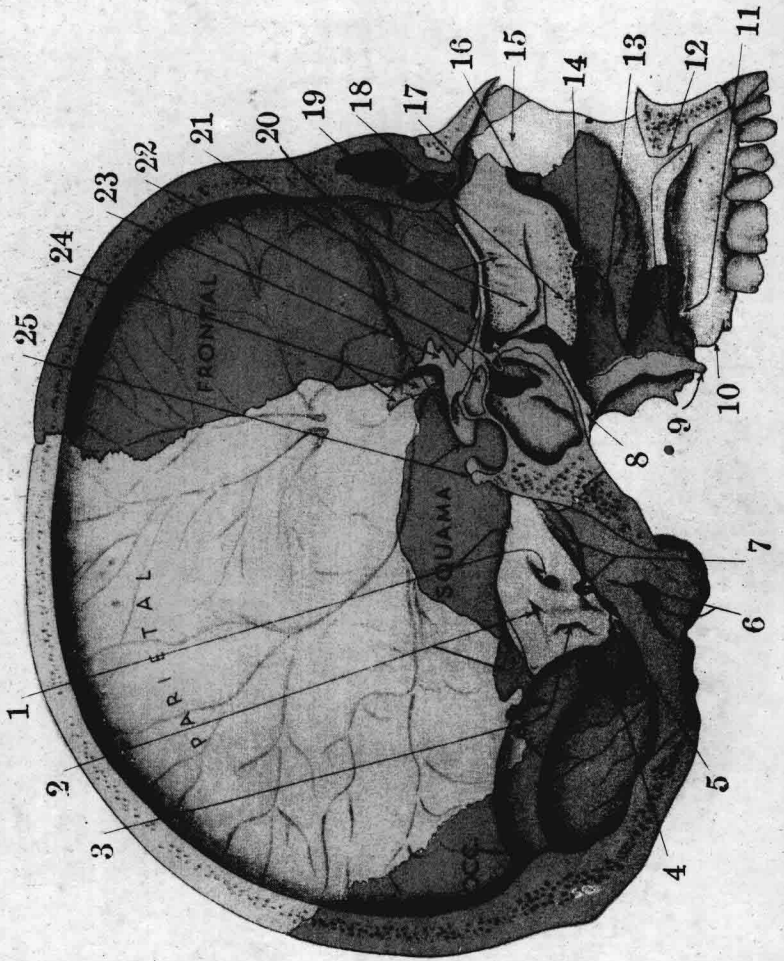
1. 鼻骨及鼻裂隙 Nasal bone and nasal slit
2. 視神經孔及中牀突 Optic foramen and middle clinoid process
3. 蝶骨小翼(已切去一部份) Lesser wing of sphenoid (partly cut away)
4. 上眶裂 Sup. orbital fissure
5. 圓孔 Foramen rotundum
6. 卵圓孔及棘孔 F. ovale and spinosum
7. 鼓室 Tympanic cavity
8. 各半規管 Semicircular canals
9. 前髁管 Ant. condylar canal
10. 下岩窩溝 Groove for inf. petrosal sinus
11. 頸靜脈結節及第九腦神經(舌咽神經), 第十腦神經(迷走神經), 與第十一腦神經(副神經)之溝 Jugular tubercle and groove for 9th, 10th, and 11th nerves
12. 頸靜脈孔邊緣之第九腦神經切迹;(顱骨)弓下凹 Notch for 9th nerve on margin of jugular foramen; subarcuate fossa
13. 後髁管及頸靜脈突 Post. condylar canal and jugular process
14. 乳突孔及顱骨乳突部 Mastoid foramen and mastoid temporal bone
15. 前庭導水管之出口 Ext. opening of aqueduct of vestibule
16. 弓狀隆凸 Arcuate eminence
17. 內耳道 Int. auditory meatus
18. 大淺岩神經溝 Groove for greater superficial petrosal N.
19. 三叉神經節之壓迹 Trigeminal impression
20. 蝶骨小舌及內頸動脈管 Lingula and carotid canal
21. 蝶骨導血管孔 Emissary sphenoidal foramen (Vesalius)
22. 後牀突及破裂孔 Post. clinoid process and foramen lacerum
23. 前牀突 Ant. clinoid process
24. 視束交叉溝及鞍結節 Optic groove and tuberculum sellae
25. 各篩管之開口 Openings of ethmoidal canals
26. 盲孔及鷓冠之翼突 Foramen caecum and alae of crista galli

頭 顱 之 矢 狀 切 面

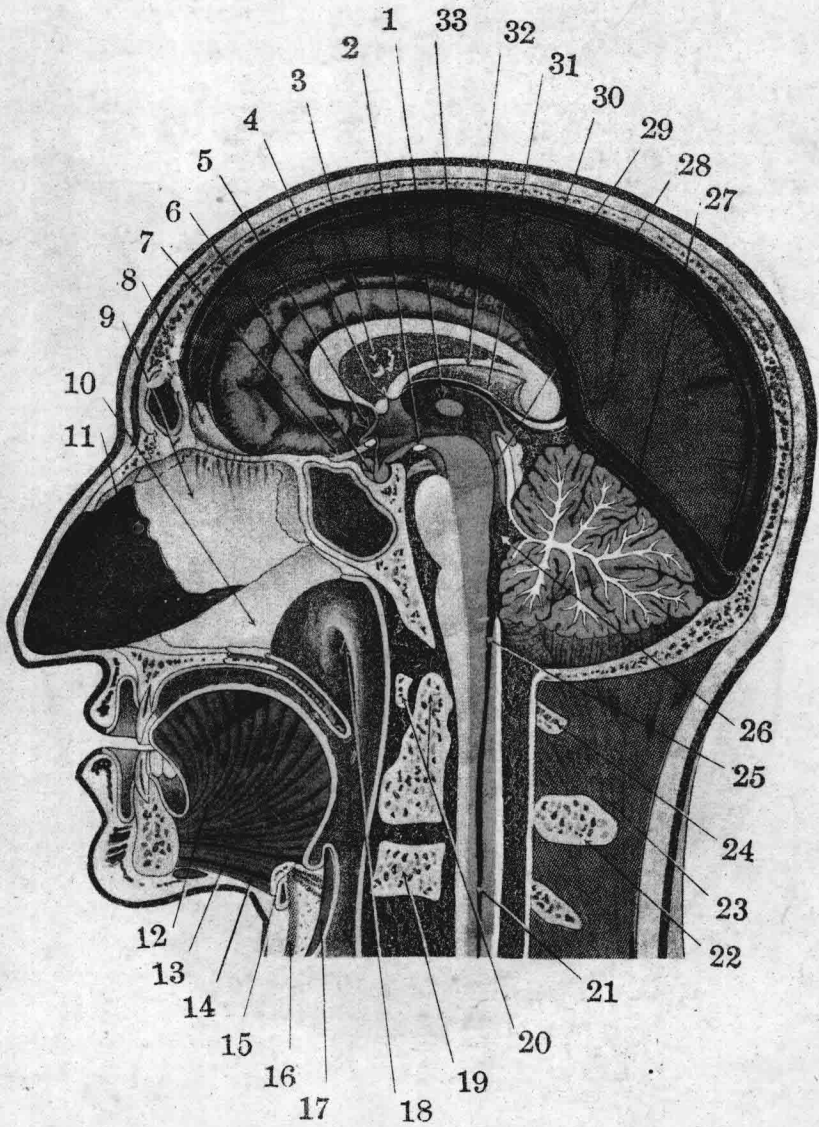
SAGITTAL SECTION OF SKULL

1. 三叉神經切迹及內耳道 Trigem. notch and int. aud. meatus
2. (顱骨)弓下凹及顱骨乳突部 Subarcuate fossa and mastoid temporal bone
3. 前庭導水管之出口 Ext. opening of aq. of vestibule
4. 乳突孔 Mastoid foramen
5. 頸靜脈孔 Jugular foramen
6. 前髁管及頸靜脈結節 Ant. condylar canal and jugular tubercle
7. 第九腦神經(舌咽神經)之切迹及下岩竇溝 Notch for 9th nerve and groove for inferior petrosal sinus
8. 犁骨翼 Ala of vomer
9. 翼突鈎 Pterygoid hamulus
10. 上顎結節 Tuberosity of maxilla
11. 大腭孔 Greater palatine foramen
12. 門齒管 Incisive canal
13. 腭骨垂直板 Perpendicular plate of palatine bone
14. 在上顎竇兩開口之間的下鼻甲骨突 A process of inf. concha between openings of maxillary sinus
15. 上顎骨額突上之鼻嵴 Agger nasi on frontal process of maxilla
16. 淚骨 Lacrimal bone
17. 額骨鼻部 Nasal part of frontal
18. 蝶腭孔及中鼻甲 Spheno-palatine foramen and middle concha
19. 額竇 Frontal sinus
20. 上鼻甲及各嗅神經之溝 Sup. concha and grooves for olfactory nerves
21. 後篩管(異常大) Post. ethmoidal canal (unusually large)
22. 蝶竇之隱窩及由蝶竇進入蝶篩隱窩之孔 A recess of sphenoidal sinus and opening out of sinus into spheno-ethmoidal recess
23. 視神經孔及蝶骨小翼 Optic foramen and lesser wing
24. 蝶骨大翼及腦膜中動脈通過之骨管 Greater wing of sphenoid and tunnel for meningeal art.
25. 鞍背及前牀突 Dorsum sellae and ant. clinoid process

1. PARIETAL = 頂骨
2. OCC. = 枕骨
3. SQUAMA = 顱骨鱗部
4. FRONTAL = 額骨



頭顱之矢狀切面



頭部之矢狀切面

頭 部 之 矢 狀 切 面
SAGITTAL SECTION OF HEAD

1. 視丘間束(中間質塊) Interthalamic connexus (massa intermedia)
2. 乳頭狀體 Mamillary body
3. 透明中隔(已撕破) Septum lucidum (torn)
4. 大腦穹窿之前柱及大腦前連合 Ant. col. of fornix and ant. commissure
5. 終末板 Lamina terminalis
6. 大腦垂體(腦下腺) Hypophysis
7. 視神經 Optic N.
8. 鷄冠 Crista galli
9. 篩骨垂直板 Perpend. plate of eth.
10. 犁骨 Vomer
11. 鼻中隔軟骨 Septal cart.
12. 頰舌肌 Genio-glossus
13. 頰舌骨肌 Genio-hyoid
14. 下顎舌骨肌 Mylohyoid
15. 舌骨及滑液囊 Hyoid bone and bursa
16. 甲狀舌骨膜 Thyro-hyoid memb.
17. 會厭及舌骨會厭韌帶 Epiglottis and hyo-ep. lig.
18. 耳咽管(歐氏管)之開口 Opening of pharyngo-tympanic (auditory) tube
19. 第三頸椎體 Body of 3rd cerv. vertebra
20. 寰椎(第一頸椎)前弓及樞椎(第二頸椎)齒突 Ant. arch of atlas and odontoid process
21. 脊髓中央管 Central canal of spinal cord
22. 樞椎(第二頸椎)棘突 Spine of axis
23. 項韌帶 Lig. nuchae
24. 寰椎 Atlas
25. 中央管 Central canal
26. 第四腦室 4th vent.
27. 直竇 Straight sinus
28. 大腦導水管 Aqueduct
29. 大腦鎌 Falx cerebri
30. 寰旁腔隙 Lacuna lateralis
31. 大大腦靜脈 Great cerebral vein
32. 穹窿體 Body of fornix
33. 下矢狀竇 Inf. sagittal sinus

切經枕骨大孔之冠狀切面
CORONAL SECTION PASSING THROUGH
FORAMEN MAGNUM

1. 矢狀縫中之縫韌帶 Sutural lig. in sagittal suture
 2. 上矢狀竇 Sup. sagittal sinus
 3. 顱骨膜 Pericranium
 4. 硬腦膜之外層 Outer layer of dura
 5. 硬腦膜之內層 Inner layer
 6. 大腦鐮 Falx cerebri
 7. 板障靜脈 Diploic V.
 8. 腦膜血管 Mening. vess.
 9. 橫竇 Trans. sinus
 10. 小腦幕 Tentorium
 11. 直竇 Straight sinus
 12. 脊髓硬膜 Spinal dura mater
 13. 枕骨大孔之後緣 Post. edge of for. mag.
 14. 小腦鐮及枕竇 Falx cerebelli and occ. sinus
 15. 入字縫 Lambdoid suture
 16. 蜘蛛膜下組織 Subarach. tissue
 17. 大腦血管 Cer. vess.
 18. 顱骨之內板 Inner table
 19. 板障 Diploë
 20. 顱骨之外板 Outer table of skull
 21. 軟腦膜 Pia mater
 22. 蜘蛛膜 Arachnoid
 23. 蜘蛛膜粒 Arachnoid granulation
-
1. OCCIP. FOSSA = 枕骨窩
 2. CEREBELL. FOSSA = 小腦窩