

主编：郑轶伟  
副主编：刘源 李广杰

评级定价 汉英双解

# SEQUEL OF CLASSIC CHINESE CHARMS

## 中国

## 花钱图典续集



上海文化出版社

主编: 郑轶伟

副主编: 刘源 李广杰

编委: 李亮 叶迎君 陈光扬 赵阳 汤志奇 王新龙 姚志伟 薛乃昌

Chief Editor: Zheng, Yiwei

Vice Chief Editor: Liu, Yuan Li, Guangjie

Editorial members: Li, Liang Ye, Yingjun Chen, Guangyang Zhao,  
Yang Tang, Zhiqi Wang, Xinlong Yao, Zhiwei Xue, Naichang

# Sequel of Classic Chinese Charms

# 中国花钱图典续集

评级定价 汉英双解

上海文化出版社

## 图书在版编目(CIP)数据

中国花钱图典续集/郑轶伟主编. - 上海:上海文化出版社,  
2006

ISBN 7-80646-970-2

I. 中… II. 郑… III. 古钱(考古)-中国-图集  
IV. K875.62

中国版本图书馆 CIP 数据核字(2006)第 019810 号

---

责任编辑:李国强

封面设计:周艳梅

装帧设计:余思聪

**书 名** 中国花钱图典续集

**出版发行** 上海文化出版社

**地 址** 上海市绍兴路 74 号

**电子信箱**: cslcm@public1.sta.net.cn

**网 址**: www.shwenyi.com

**经 销**: 新华书店

**印 刷** 常熟市华通印刷有限公司

**规 格** 850×1168 1/16

**印 张** 35.75

**插 图** 48 面

**版 次** 2006 年 3 月第 1 版 2006 年 3 月第 1 次印刷

**印 数** 1—3210 册

**国际书号** ISBN 7-80646-970-2/K·136

**定 价** 120.00 元

**告读者** 如发现本书有质量问题请与印刷厂质量科联系

**T: 0512-52391383**





Dr. Zheng, Yiwei  
(Chief Editor)

郑轶伟博士(主编), 1972年生, 上海人, 美国圣云大学教授, 北美中国哲学家协会主席。收藏花钱和古玩二十年, 精于花钱和古玩的辨伪和鉴赏。近年来, 发表花钱和古玩类鉴赏文章20余篇, 主编《中国花钱图典》, 并在央视《鉴宝》节目中鉴定花钱。

(1972--), President of Association of Chinese Philosophers in North America, is born in Shanghai. He has collected charms and antiques for twenty years, and is good at the authentication and appraisal of charms and antiques. In recent years, he has published more than twenty articles on the appraisal of charms and antiques. He is the chief editor of *Classic Chinese Charms*, and has participated CCTV-2 *Jian Bao* program as a specialist in charm appraisal.



Liu, Yuan  
(Vice Chief Editor)

刘源(副主编), 1975年生, 大连瓦房店市人, 收藏研究花钱十余年。精于花钱的辨伪和断代, 在花钱炉别区分方面的研究工作全国领先。《中国花钱图典》副主编, 现任国内最大的钱币网站“古泉园地”花钱区版主。

(1975--) is born in Wa Fang Dian, Dalian. He has collected and studied charms for more than ten years. He is good at charm authentication, and his research on Qing dynasty minting bureaus in charm manufacture is pioneering in China. He is the vice chief editor of *Classic Chinese Charms*, and currently he is in charge of the charm forum at the biggest coin website in China *Gu Quan Yuan Di*.



Li, Guangjie  
(Vice Chief Editor)

李广杰(副主编), 1970年生, 广州人, 广东省收藏协会会员。对历代钱币、玺印、铜器等皆有研究, 从20世纪90年代末开始收藏古代花钱, 已获不少好品, 成为岭南地区古代花钱收藏研究的先锋, 对古代花钱的断代、评级有独特的见解。

(1970--) is born in Guangzhou. He has a graduate degree and is a member of the Guangdong Association of Collectors. His research covers Chinese coins, seals, and bronze. He began to collect charms in late 1990s and has acquired many good pieces. Now he is a leading collector and researcher in charms in the Lingnan region. He has original views on the appraisal of charms.

编委成员

Editorial Staff





Li, Liang

李亮, 1958年生, 四川人, 四川省钱币学会理事, 成都市藏品商会副会长, 成都市收藏家协会常务理事。发表钱币论文20余篇, 参与编撰《四川铜圆研究》, 主编《清宝川局铸套子钱汇考》。

(1958--), officer of Sichuan Numismatics, officer of Association of Chengdu Collectors, is born in Sichuan. He has published more than twenty articles on coins. He is an editor of *Sichuan Tong Yuan Yan Jiu* and the chief editor of *Qing Bao Chuan Ju Zhu Tao Zi Qian Hui Kao*.



Ye, Yingjun

叶迎君, 1970年生, 苏州人, 高级工程师。1992年开始收藏花钱, 十多年来共收藏品相绝佳的清代苏炉吉语、图案花钱100余品, 收藏各朝各类花钱约600余种。对扇面书画、文玩杂件等也有涉猎, 收藏明清铜香炉、熏炉百余件。

(1970--), senior engineer, is born in Suzhou. He began to collect charms in 1992, and over the ten years he has collected over 100 Jiangsu mint charms in excellent condition and 600 charms in total. He also collects fan painting and scholarly objects, and he has over 100 Ming or Qing bronze censers.



Chen, Guangyang

陈光扬, 1966年生, 新加坡人, 新加坡钱币学会第二副会长, 收藏古钱数万枚, 其中精珍名誉品很多, 是当今首屈一指的中国古钱收藏家。同时也喜爱收集中国花钱, 藏有很多珍稀的宫钱及系列花钱。

(1966--), the Second Vice President of Singapore Numismatics, is born in Singapore. He has collected several dozen thousand ancient coins, including many rare and famous pieces. He is one of the best Chinese coin collectors in the world. He is also interested in collecting Chinese charms, and he has collected many rare palace charms and charm series.



Zhao, Yang

赵阳, 1968年生, 无锡人。26岁时在新疆萌生了对花钱的热爱。对花钱收藏颇有心得, 收藏的神怪人物花钱属于一流范畴, 民俗小铜人收藏也是国内一绝。创办了以“民俗与收藏研究”为号召的复兴致远文化论坛。现担任《尚物》杂志主编。

(1968--), is born in Wuxi. He began to love charms at the age of 26. He has done substantial research on charms. He has a first-rate collection of religious amulets and one of the best collections of Liao and Jin figure pendant. He is a founder of the *Fu Xing Zhi Yuan Forum*, and the chief editor of the *Shang Wu* magazine.



Tang, Zhiqi

汤志奇, 1975年生, 浙江湖州人, 专职历代古钱币收藏经营和研究。

(1975--), is born in Huzhou, Zhejiang Province in 1975. Ancient coin collecting and research are his profession.



Wang, Xinlong

王新龙, 1966年生, 浙江嘉兴人, 嘉兴市翠玉斋珠宝首饰有限公司总经理。1980年开始收藏古钱币, 1990年起开始收藏花钱, 现花钱藏品达千余枚, 被泉界誉为后起之秀。

(1966--), is born in Jiaxing, Zhejiang Province. He is the manager of Jiaxing Cui Yu Zhai Jewelry. He started to collect ancient coins in 1980, and began to collect charms in 1990. Now he has more than a thousand charms, and is regarded as a promising coin collector.



Yao, Zhiwei

姚志伟, 1963年生, 广东人, 从1992年开始收集云南贵州花钱, 钱币, 银器, 杂件。对贵州少数民族花钱尤其是水书花钱收藏颇多。

(1963--), is born in Guangdong. In 1992 he began to collect charms, coins, and silverware of Yun Nan and Guizhou Provinces. He has collected a lot of Guizhou minority charms, especially the Shui-type script charms.



Xue, Naichang

薛乃昌, 江苏人, 常州职工钱币研究会会员, 从事收藏达20余年, 主集花钱、玉器及小香炉等, 花钱藏品千余枚, 侧重于专题、系列研究。

is born in Jiangsu Province. He has collected over 20 years, and is a member of Changzhou Numismatics. He collects charm, jade, and bronze censers. He has over 1000 charms, including many charm series.





1a

1a 郑铁伟藏 From the collection of Zheng, Yiwei





1b

1b 郑轶伟藏 From the collection of Zheng, Yiwei

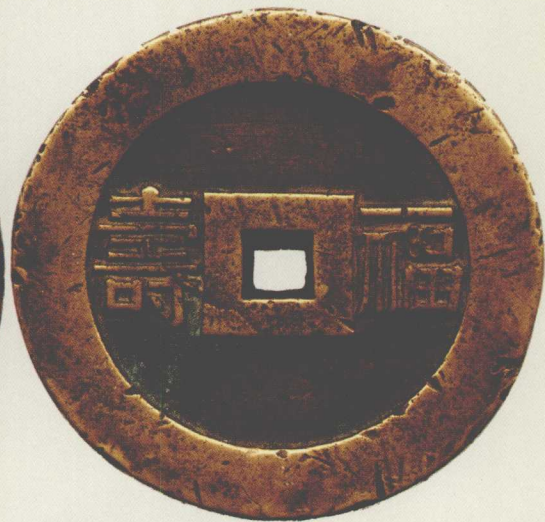


2 陈光扬藏

From the  
collection of  
Chen,  
Guangyang



2



3 张纪田藏

From the  
collection of  
Zhang, Jitian



3



4 郑轶伟藏

From the  
collection of  
Zheng, Yiwei



4



5 李广杰藏

From the  
collection of  
Li, Guangjie



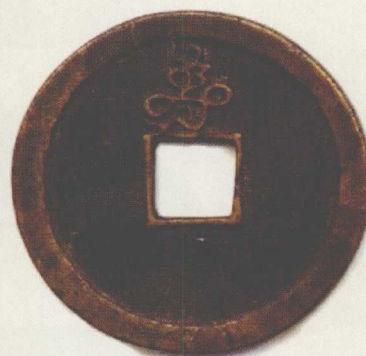
5







6



7



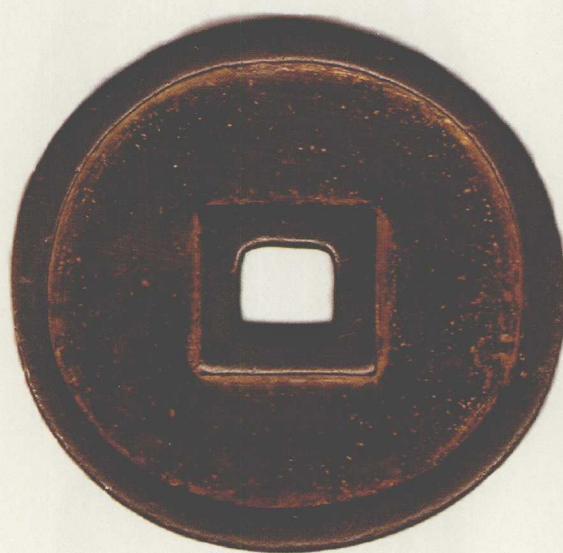
8



9

6~9 陈光扬藏 From the collection of Chen, Guangyang





10



11

10~11 赵阳藏神怪花钱系列 Zhao, Yang's religious charm series





12



13



14



15

12~15 赵阳藏神怪花钱系列 Zhao, Yang's religious charm series



16~19

赵阳藏神怪花钱  
系列

Zhao, Yang's  
religious  
charm series



16



17



18



19







20



21



22

20~22 赵阳藏神怪花钱系列 Zhao, Yang's religious charm series



23 赵阳藏

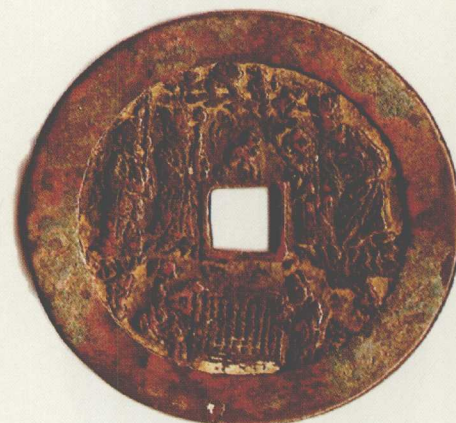
From the  
collection of  
Zhao, Yang



23

24 赵阳藏

From the  
collection of  
Zhao, Yang



24

25 叶迎君藏

From the  
collection of  
Ye, Yingjun



25





26



26 郑轶伟藏

From the collection of Zheng, Yiwei



27



27 郑轶伟藏

From the collection of Zheng, Yiwei



28



28 郑轶伟藏

From the collection of Zheng, Yiwei



29



29 郑轶伟藏

From the collection of Zheng, Yiwei





30



31

30~31 郑轶伟藏 From the collection of Zheng, Yiwei





32



32 叶迎君  
藏

From the  
collection  
of Ye,  
Yingjun



33



33 叶迎君  
藏

From the  
collection  
of Ye,  
Yingjun



34



34 叶迎君  
藏

From the  
collection  
of Ye,  
Yingjun



35



35 叶迎君  
藏

From the  
collection  
of Ye,  
Yingjun