

责任编辑 于福庚 金 辉
文字编辑 高小龙 孟 君 邢 鹏
李 兵
英文翻译 刘 勇 裴亚静 王淑芳
版式设计 晓 更 乔 磊
绘 图 张秀云
摄 影 祁庆国 谷中秀 梁 刚
张京虎 杨京京 王殿平
姚天新
责任印制 赵 恒

图书在版编目(CIP)数据

北京文物精粹大系·陶瓷卷(下)/《北京文物精粹大系》编委会,
北京市文物局编. —北京:北京出版社, 2003

ISBN 7-200-04902-6

I. 北… II. ①北… ②北… III. ①文物—北京市

②古代陶瓷—北京市 IV. K872. 1

中国版本图书馆 CIP 数据核字 (2003) 第 027907 号

北京文物精粹大系·陶瓷卷(下)

GEMS OF BEIJING CULTURAL RELICS SERIES

POTTERY AND PORCELAIN II

编者 《北京文物精粹大系》编委会

北 京 市 文 物 局

出版 北京出版社

地址 中国·北京·北三环中路 6 号

邮编 100011

网址 <http://www.bph.com.cn>

发行 北京出版社出版集团

制印 北京雅昌彩色印刷有限公司

版次 2004 年 3 月第 1 版第 1 次印刷

开本 889 × 1194 1/16

印张 19

统一书号: ISBN 7-200-04902-6/K · 514

定价: 286.00 元

北京文物精粹大系

GEMS OF BEIJING CULTURAL RELICS SERIES

陶瓷卷

Ⓣ

POTTERY AND
PORCELAIN II

《北京文物精粹大系》编委会 编
北京市文物局

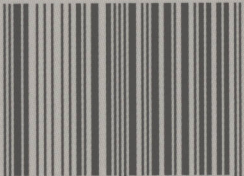
北京出版社

BEIJING PUBLISHING HOUSE



陶瓷卷[®]
POTTERY AND
PORCELAIN II

ISBN 7-200-04902-6



9 787200 049022 >

定价：286.00 元

北 京 文 物 精 粹 大 系
GEMS OF BEIJING CULTURAL RELICS SERIES

陶瓷卷 ①

POTTERY AND PORCELAIN II

本卷顾问	耿宝昌	李辉柄
本卷主编	马希桂	
副 主 编	武俊玲	黄秀纯
编 委	马希桂	武俊玲 黄秀纯
	裴亚静	阎国藩 龙霄飞
	邢 鹏	于力凡 张 桐
	程瑞秀	刘 春 杨俊艳
	刘苏北	刘重广 宋 磊

Advisers for Present Volume
Geng Baochang Li Huibing

Compiler-in-Chief of Present Volume
Ma Xigui

Deputy Compiler-in-Chief of Present Volume
Wu Junling Huang Xiuchun

Members of the Compilatory Board
Ma Xigui Wu Junling Huang Xiuchun
Pei Yajing Yan Guofan Long Xiaofei
Xing Peng Yu Lifan Zhang Tong
Cheng Ruixiu Liu Chun Yang Junyan Liu Subei
Liu Chongguang Song Lei



顾问	北京市文物鉴定委员会
名誉主编	李志坚 龙新民 刘敬民
策划	朱述新 梅宁华 吴雨初
主编	梅宁华 陶信成
副主编	许金和 孔繁峙
执行副主编	舒小峰 傅公钺 左汉桥
编委	朱述新 梅宁华 吴雨初
	陶信成 许金和 孔繁峙
	舒小峰 傅公钺 左汉桥
	王贞国 温桂华 于平
	韩永 王丹江 宋大川
	刘超英 高小龙 肖纪龙
	侯明 陈晓和 张肇基
	于福庚 赵洛

执行编辑	刘超英 高小龙 于福庚
整体设计	刘京川 于福庚 乔磊

总序

北京是中华人民共和国的首都，是世界闻名的历史文化名城，在漫长的历史进程中，北京创造了灿烂的文明，形成了特有的文化。北京现有的文物遗存丰富，而且弥足珍贵，是人民创造历史的见证，是北京文化的物质载体，是中华民族文化遗产极为重要的组成部分。据统计，仅北京文博单位收存的文物即达200余万件，埋藏于地下和散存于民间的文物更是不计其数，而且近年来多有发现。这些文物对于人们认识 and 了解北京，对于弘扬中华民族乃至北京文化都是极为珍贵的。多年来，这些文物虽得到妥善保存，但却难以示人，只有少量文物得以在博物馆展出。对于热爱北京、热爱北京文物的人来说，不能一睹这些文物珍品，是一大憾事。

北京的文物素以文化内涵深厚，精品众多著称于世。通过多种形式，把北京的文物藏品展示出来，是文物工作者所肩负的传递历史文化信息的责任。由北京市文物局和北京出版社合作出版的《北京文物精粹大系》，就是在这方面所做出的努力。《北京文物精粹大系》从北京文博单位的各类文物藏品中，选出传世和出土的数千件精品，分门别类，辟卷出版，不但满足了文物爱好者的需求，更是对北京文化一种全面深入的推介。这件事情，也是北京文化建设的一项重要工程。

《北京文物精粹大系》共17卷，即石雕、石刻、陶瓷(上、下)、玉器、青铜器、古钟、佛造像(上、下)、金银器、书法、绘画、古籍善本、织绣、家具、工艺品(上、下)等。其中许多文物不但艺术价值高，而且有重要的历史价值和学术价值。出版者力求通过这部大型文物图录，使人们不但领略和欣赏到精美绝伦的艺术珍品，也能深切地产生历史责任感，将北京的文化遗产保护好并发扬光大，让北京文化在新时代写出更精美的篇章。



1999年7月

FOREWORD TO
THE GEMS OF
BEIJING
CULTURAL
RELICS SERIES

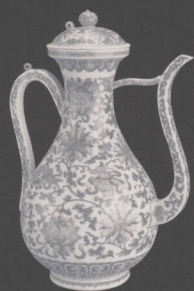
Beijing is the capital of the People's Republic of China. As a world-famous historical and cultural city, Beijing created a unique culture and splendid civilization in its age-long historical course. The abundant and valuable cultural relics of Beijing are witnesses to the truth that the people create history, material carriers of Beijing's culture, and an extremely important component of the Chinese nation's cultural heritage. According to statistics, the cultural relics preserved in Beijing antiquarian units and museums number more than 2,000,000, not to speak of uncountable ones buried underground and scattered among the people, of which many have been discovered in recent years. They are invaluable for understanding Beijing and propagating its and even the whole Chinese nation's culture. For a long time, appropriate work has been done for the preservation of available treasures, but it has been difficult to show them to the public except for a small part exhibited in museums. It is really a great pity for all the people who love Beijing and its culture to be unable to see these precious works with their own eyes.

To show publicly the collections of Beijing cultural relics in multiple forms is a duty of antiquarians in their efforts to spread information about history and culture. As an effort to do this, the Beijing Municipal Bureau of Cultural Relics and Beijing Publishing House are publishing jointly the *Gems of Beijing Cultural Relics Series*. The Series includes thousands of masterpieces selected from the collections of Beijing antiquarian units and museums and puts them in different categories and volumes, making a comprehensive presentation of Beijing's culture. This is also a significant project in the cultural construction of Beijing.

The cultural relics of Beijing have always been celebrated worldwide for their profound cultural connotations and plenty of excellent works. Of them, many handed-down and unearthed treasures have been collected in the Series and classified into 17 volumes, i.e. *Stone Carvings*, *Stone Inscriptions*, *Pottery and Porcelain* (2 volumes), *Jades*, *Bronzes*, *Ancient Bells*, *Buddhist Statues* (2 volumes), *Gold and Silver Wares*, *Calligraphy*, *Paintings*, *Rare Ancient Books*, *Textiles and Embroidery*, *Furniture*, and *Works of Decorative Arts* (2 volumes), with numerous objects possessing high aesthetic as well as historical and academic value. It is the intention of the publishers of these voluminous albums not only to present exquisite works of art for the readers' appreciation and study, but also to arouse in them a deep sense of responsibility for history, an intensive pride in Beijing and the Chinese nation, and a tremendous enthusiasm for creation, so that we can all make greater efforts to safeguard Beijing's cultural heritage, to enhance its radiance, and to make the Beijing culture a still more brilliant chapter in our motherland's history in the new epoch.

Mei Ninghua

July, 1999



陶瓷卷 ①

POTTERY AND
PORCELAIN Ⅱ

北京文物精粹大系

GEMS OF BEIJING CULTURAL RELICS SERIES

《北京文物精粹大系》编委会 编
北 京 市 文 物 局

主 编 梅宁华 陶信成

Compilers
Compilation Board of the GEMS OF BEIJING
CULTURAL RELICS SERIES and
Beijing Municipal Bureau of Cultural Relics

Compilers-in-Chief
Mei Ninghua
Tao Xincheng

北 京 出 版 社
BEIJING PUBLISHING HOUSE



凡 例

一、《北京文物精粹大系》陶瓷卷，分上、下两卷。

上卷内容为元以前陶瓷器；下卷除一件元代琉璃三彩龙凤纹熏炉外，均为元、明、清三朝瓷器。

二、上卷卷首有《北京地区陶瓷概述》作为陶瓷卷总论，另在上、下卷分别收录《龙泉务窑址发掘概述》和《简论元大都遗址出土的瓷器》、《北京地区出土的明代青花瓷器》作为专论。陶瓷卷上、下两卷的图版说明均有相关内容的详实文字介绍。

三、本卷为《北京文物精粹大系》陶瓷卷（下），选录的元、明、清三朝陶瓷器以首都博物馆藏品为主，北京市文物研究所、北京艺术博物馆、颐和园管理处、十三陵定陵博物馆和北京市文物公司等单位的，具有历史、艺术、科学价值的精品亦广为收录。因篇幅所限，清道光以后瓷器未予收录。

四、本卷选录的陶瓷器，除北京地区历年出土的精品外，还精选部分具有较高水平的传世品，其中出土的陶瓷器91件，传世的瓷器178件。

五、本卷选录的瓷器按时代顺序编排为元、明、清三个部分，每个部分又划分为青花、彩瓷和颜色釉三大类，各类再按时代顺序编排。

六、所选元代瓷器大多数都在器物前冠以窑名。明、清瓷器因多系景德镇所生产，故景德镇窑产品窑口名称予以省略。

目 录 CONTENTS

简论元大都遗址出土的瓷器	18	A brief discussion of the porcelain unearthed in Yuan Dadu site		纹玉壶春瓶		with floral design, Jingdezhen ware
北京地区出土的明代青花瓷器	28	Blue and White porcelain of the Ming Dynasty unearthed at Beijing region		18-19. 景德镇窑青白釉水月观音菩萨像	54	18-19. Bluish white (Qingbai) glazed image of Avalokitesvara Bodhisattva gazing at the moon over water, Jingdezhen ware
元代	39	Yuan Dynasty		20. 景德镇窑青白釉加漆描金释迦牟尼佛坐像	56	20. Bluish white glazed statue of Sakyamuni Buddha decorated with laquer and liquid gold, Jingdezhen ware
1-2. 琉璃三彩龙凤纹熏炉	40	1-2. Tri-coloured glazed incense burner with dragon and phoenix design		21. 景德镇窑青白釉执桃童子像	57	21. Bluish white glazed statue of a child with a peach in hand, Jingdezhen ware
3-4. 景德镇窑青花凤首扁壶	42	3-4. Blue and white flask with phoenix-head spout, Jingdezhen ware		22. 景德镇窑青白釉僧帽壶	58	22. Bluish white glazed <i>hu</i> -pot in the shape of monk's cap, Jingdezhen ware
5. 景德镇窑青花束莲纹梨式壶	44	5. Blue and white pear shaped ewer with lotus design, Jingdezhen ware		23. 景德镇窑青白釉多穆壶	59	23. Bluish white glazed <i>duomu</i> <i>hu</i> -pot, Jingdezhen ware
6-7. 景德镇窑青花鸳鸯戏水纹玉壶春瓶	45	6-7. Blue and white <i>yuhuchun</i> (pear shaped vase) vase with design of mandarin ducks playing in water, Jingdezhen ware		24. 景德镇窑青白釉匝	60	24. Bluish white glazed <i>yi</i> -vessel, Jingdezhen ware
8-9. 景德镇窑青花龙纹碗	48	8-9. Blue and white bowl with dragon design, Jingdezhen ware		25. 景德镇窑青白釉串珠纹玉壶春瓶	60	25. Bluish white glazed <i>yuhuchun</i> vase with beaded border design, Jingdezhen ware
10-11. 景德镇窑青花菊花牡丹纹盏托	49	10-11. Blue and white cup-stands with design of chrysanthemum and peony scrolls, Jingdezhen ware		26. 景德镇窑青白釉月映梅纹碗	61	26. Bluish white glazed bowl with design of moon and plum blossom, Jingdezhen ware
12. 景德镇窑青花蕉叶纹觚	50	12. Blue and white <i>gu</i> -vases with design of plantain leaves, Jingdezhen ware		27. 景德镇窑青白釉胆式瓶	61	27. Bluish white glazed gall shaped vase, Jingdezhen ware
13. 景德镇窑青花松竹梅纹葵口盘	51	13. Blue and white lobed rim plate with design of Three Friends of Winter (pine, bamboo and prunus), Jingdezhen ware		28. 景德镇窑青白釉笔架	62	28. Bluish white glazed brush rest, Jingdezhen ware
14-15. 景德镇窑青花束莲纹匝	52	14-15. Blue and white <i>yi</i> -vessel with lotus design, Jingdezhen ware		29. 景德镇窑青白釉乳钉刻莲纹三足炉	64	29. Bluish white glazed tripod burner with design of nipple and lotus scroll, Jingdezhen ware
16. 景德镇窑青花雕塑婴戏鸟食罐	53	16. Blue and white bird feeder with playing child, Jingdezhen ware		30-31. 景德镇窑青白釉磨	65	30-31. Bluish white glazed model of millstones, Jingdezhen ware
17. 景德镇窑釉里红花卉	53	17. Underglaze red <i>yuhuchun</i> vase		32. 景德镇窑青白釉龙纹高足碗	66	32. Bluish white glazed stem bowl with dragon design, Jingdezhen ware
				33. 景德镇窑青白釉刻牡丹	67	33. Bluish white glazed flask with

纹双耳扁壶		incised design of peony spray, Jingdezhen ware		ing design of chrysanthemum over white slip ground, Cizhou ware
34. 景德镇窑青白釉饕餮纹双耳三足炉	68	34. Bluish white glazed tripod burner with two handles and ogre (Taotie) design, Jingdezhen ware	50. 磁州窑白地黑花诗文盖罐	79 50. Covered jar with underglaze black slip painting design of flower and poem over white slip ground, Cizhou ware
35. 景德镇窑青白釉褐彩荷叶形盖罐	69	35. Bluish white glazed jars with lotus-leaf shaped cover and brown spots, Jingdezhen ware	51. 磁州窑白地黑花赭彩人物纹盖罐	79 51. Covered jar with brown figure design, Cizhou ware
36. 龙泉窑青釉划花缠枝莲纹玉壶春瓶	69	36. Celadon yuhuchun vase with incised design of lotus scroll, Longquan ware	52. 磁州窑白地褐花罐	80 52. Jar with brown floral design, Cizhou ware
37. 龙泉窑青釉凸花海水云龙纹瓶	69	37. Celadon vase with impressed relief design of sea water and dragon, Longquan ware	53. 磁州窑白地黑花鱼藻纹大盆	81 53. Basin with underglaze black slip painting design of fish and waterweed over white slip ground, Cizhou ware
38. 龙泉窑青釉骑狮观音菩萨像	70	38. Celadon statue of Avalokitesvara Bodhisattva riding on a lion, Longquan ware	54-55. 钧窑天蓝釉贴花兽面纹连座双耳瓶	82 54-55. Sky blue glazed vase with two handles, openwork base and animal mask applique, Jun ware
39. 龙泉窑青釉释迦牟尼佛坐像	71	39. Celadon statue of Sakyamuni Buddha, Longquan ware	56. 钧窑月白釉紫斑花瓣口盘	84 56. Moon white glazed plate with purple patch and petalled rim, Jun ware
40. 龙泉窑青釉印花牡丹纹尊	72	40. Celadon vase with impressed peony scroll design, Longquan ware	57. 钧窑天蓝釉水丞	85 57. Sky blue glazed water pot, Jun ware
41. 龙泉窑青釉褐斑高足杯	73	41. Celadon stem cup with brown spots, Longquan ware	58. 景德镇窑蓝釉白龙纹梅瓶	86 58. Blue glazed meiping (Lit. plum vase) vase with white dragon design, Jingdezhen ware
42. 龙泉窑青釉云鹤纹唾盂	73	42. Celadon spittoon with design of cloud and cranes, Longquan ware	59. 酱釉圆砚盒	87 59. Soy brown glazed inkstone box
43. 龙泉窑青釉印花牡丹纹盖罐	74	43. Celadon covered jar with impressed design of peony scroll, Longquan ware	60. 黄釉彩绘月映梅纹碗	87 60. Yellow glazed bowl painted with moon and plum inside
44-45. 磁州窑白地黑花龙凤纹四系扁壶	74	44-45. Four handled flask with underglaze black slip painting design of dragon and phoenix over white slip ground, Cizhou ware	61. 景德镇窑卵白釉“王”“白”款高足碗	88 61. Egg-white glazed stem bowl with moulded lotus scroll design and “Wang” “Bai” mark, Jingdezhen ware
46. 磁州窑白地黑花人物诗文罐	76	46. Jar with underglaze black slip painting design of figure and poem over white slip ground, Cizhou ware	62. 景德镇窑卵白釉双系三足炉	88 62. Egg-white glazed tripod burner with two loop handles, Jingdezhen ware
47. 磁州窑白地黑花凤纹罐	77	47. Jar with underglaze black slip painting design of phoenix over white slip ground, Cizhou ware	63. 景德镇窑卵白釉凸花缠枝莲纹碗	89 63. Egg-white glazed bowl with impressed relief lotus scroll, Jingdezhen ware
48. 磁州窑白地黑花赭彩凤纹罐	77	48. Jar with brown phoenix design, Cizhou ware	明代	91 Ming Dynasty
49. 磁州窑白地黑花荷叶形盖罐	78	49. Lotus leaf-shape covered jar with underglaze black slip paint-	64-65. 青花折枝花卉纹盖罐	92 64-65. Blue and white covered jar with design of floral sprays

66. 青花缠枝菊纹盏托	94	66. Blue and white saucer with design of chrysanthemum scrolls	sette design
67. 青花桃竹纹带盖梅瓶	95	67. Blue and white covered <i>meiping</i> vase with design of peach and bamboo	93-95. 青花群仙祝寿图罐 112 93-95. Blue and white jar with design of immortals congratulating on an elderly's birthday
68. 青花折枝葡萄纹盘	96	68. Blue and white plate with design of grape spray	96. 青花人物楼阁图盖罐 114 96. Blue and white covered jar with design of figure and pavilion
69. 青花阿拉伯文无挡尊	96	69. Blue and white <i>zun</i> -vase with Arabic inscription	97. 青花绿彩龙纹碗 115 97. Blue and white bowl with green dragon design
70. 青花缠枝花卉纹壮罐	97	70. Blue and white floral design jar of Islamic albarello form	98. 青花穿花龙纹盘 115 98. Blue and white plate with dragons crossing lotus scroll design
71-72. 青花缠枝花卉菊瓣纹碗	98	71-72. Blue and white bowl with floral scroll design	99. 青花灵芝纹阿拉伯文罐 116 99. Blue and white jar with design of <i>Lingzhi</i> immortal fungus and Arabic inscription
73-74. 青花云龙纹洗	99	73-74. Blue and white washer with design of cloud and dragons	100. 青花双狮戏球纹绣墩 117 100. Blue and white garden stool with design of two lions playing embroidered ball
75. 青花云龙纹罐	100	75. Blue and white jar with design of cloud and dragon	101. 黄釉青花花果纹盘 118 101. Yellow glazed plate with under-glaze blue flower and fruit spray design
76-77. 青花海水云龙纹高足碗	101	76-77. Blue and white stem bowl with design of sea water, cloud and dragons	102. 青花灵芝纹阿拉伯文笔架 118 102. Blue and white brush rest with design of Arabic inscription
78-79. 青花花卉纹高足碗	102	78-79. Blue and white stem bowl with floral design	103. 青花云龙纹油缸 119 103. Blue and white oil urn with cloud and dragon design
80. 青花灵芝纹石榴尊	103	80. Blue and white pomegranate shaped <i>zun</i> -vase with <i>lingzhi</i> immortal fungus design	104. 青花花卉纹梅瓶 120 104. Blue and white <i>meiping</i> vase with floral design
81. 青花折枝花果纹葵口碗	104	81. Blue and white bowl with petalled rim and design of flower and fruit sprays	105-109. 青花婴戏图盖罐 121 105-109. Blue and white covered jar with design of kids at play
82. 青花缠枝莲托八吉祥纹高圈足碗	104	82. Blue and white bowl with design of lotus scroll and the Eight Buddhist Emblems	110-111. 青花群仙祝寿图盖罐 124 110-111. Blue and white covered jar with design of immortals congratulating on an elderly's birthday
83-84. 青花束莲纹盘	105	83-84. Blue and white plate with bundled lotus design	112. 青花八卦云鹤纹串铃式盒盖 126 112. Blue and white box cover in the style of a hollow metal ring with design of the Eight Diagrams, cloud and cranes
85-86. 青花人物纹罐	106	85-86. Blue and white jar with figure design	113. 青花云鹤纹盘 126 113. Blue and white plate with design of cloud and cranes
87. 青花花卉纹香炉、青花人物图烛台	107	87. Blue and white incense burner with floral design and candlesticks with figure design	114. 青花朵花纹象耳瓶 127 114. Blue and white vases with elephant shaped handle and flower design
88-89. 青花访贤图罐	108	88-89. Blue and white jar with design of visiting a person of virtue	115-116. 青花红彩鱼藻纹盖罐 127 115-116. Covered jar with blue and white waterweed and red fish design
90-91. 青花人物纹罐	110	90-91. Blue and white jar with figure design	117. 青花云龙纹盘 130 117. Blue and white plate with
92. 青花宝相花纹卧足碗	111	92. Blue and white bowls with ro-	

		cloud and dragon design
118. 青花团龙纹方盒	131	118. Blue and white square box with dragon medallion design
119. 青花鱼藻纹盘	132	119. Blue and white plate with design of fish and waterweed
120. 青花龙纹梅瓶	133	120. Blue and white <i>meiping</i> vase with dragons design
121-122. 青花缠枝番莲纹梅瓶	134	121-122. Blue and white <i>meiping</i> vase with design of passionflower scroll
123. 金托盘金盖青花花卉纹瓷碗	136	123. Blue and white bowl with floral design, gold tray and gold cover
124. 青花渭滨访贤图盖罐	138	124. Blue and white jar with design of visiting a person of virtue
125. 青花云凤纹缸	139	125. Blue and white urn with cloud and phoenix design
126-128. 青花莲瓣形盘	140	126-128. Blue and white plate in the form of lotus petal
129. 青花布袋僧像	142	129. Blue and white statue of Maitreya
130. 青花人物纹提梁壶	143	130. Blue and white pot with loop handle and figure design
131. 青花凤兽穿牡丹纹葫芦瓶	144	131. Blue and white double-gourd vase with design of phoenix, beast and peony scroll
132. 青花莲池情趣图八方盖罐	145	132. Blue and white octagonal covered jar with design of lotus pond
133. 青花海兽纹鼓式砚	146	133. Blue and white inkstone in the shape of a drum with sea beast design
134. 青花五老图罐	147	134. Blue and white jar with design of Wu Lao Tu (Five Elderly)
135. 青花人物纹瓶	148	135. Blue and white vase with figure design
136. 青花驯马图盖罐	149	136. Blue and white covered jar with design of taming horses
137. 白釉酱彩花果纹盘	149	137. White glazed plate with brown colour design of flower and fruit sprays
138-140. 斗彩葡萄纹杯	150	138-140. <i>Doucai</i> (Lit.dovetailing or contrasting colours) cups with grape design

141. 珐花八仙过海图罐	152	141. <i>Fahua</i> jar with Taoist design of the Eight Immortals crossing the sea
142. 白釉刻花填绿彩龙纹碗	153	142. White glazed bowl with incised green dragons design
143. 白釉红鱼纹盘	153	143. White glazed plate with red fish design
144. 斗彩八卦纹双耳三足炉	154	144. <i>Doucai</i> tripod burner with two handles and design of the Eight Diagrams
145. 五彩人物图盖罐	155	145. <i>Wucai</i> (Lit.five colours) covered jar with figure design
146-147. 五彩龙纹盘	156	146-147. <i>Wucai</i> plate with dragons design
148. 五彩花鸟纹洗	157	148. <i>Wucai</i> washer with design of flowers and birds
149-150. 五彩人物故事图盆	157	149-150. <i>Wucai</i> basin with design of figures and stories
151-152. 五彩人物纹方格盒	160	151-152. <i>Wucai</i> square box with figure design
153. 黄釉三彩双耳三足炉	161	153. <i>Sancai</i> (Lit.three colours) tripod with two handles and <i>chi</i> -dragon design over yellow ground
154. 黄釉紫彩人物花卉纹觚	162	154. Yellow glazed <i>gu</i> -vases with purple figure and floral design
155. 蓝釉白花小口瓶	163	155. Blue glazed vase with white flower design
156. 酱釉梨式壶	164	156. Soy brown glazed ewer in pear shape
157. 红釉印花云龙纹盘	165	157. Red glazed plate impressed with cloud and dragon design
158. 甜白釉暗花云龙纹梨式壶	166	158. White glazed pear shaped ewer with fine incised design of cloud and dragon
159. 甜白釉暗花缠枝莲纹盖罐	167	159. White glazed jar with fine incised lotus scroll
160. 白釉青花“内府”铭梅瓶	168	160. White glazed <i>meiping</i> vase with “Neifu” mark written in underglaze blue
161. 龙泉窑青釉绳耳三足炉	169	161. Celadon tripod burner with rope shaped handles
162-163. 洒蓝釉钵	170	162-163. Blue glazed <i>bo</i> -bowl with snow-like effect
164-165. 冬青釉菱花式	171	164-165. Pale green glazed dish

小碟		with lobed rim
166. 仿哥窑卧足碗	172	166. Bowl in imitation of Ge wares
167. 黄釉盘	172	167. Yellow glazed plate
168. 白釉暗花梅瓶	173	168. White glazed <i>meiping</i> vase with fine incised floral design
169. 回青釉盘	174	169. Plate with Mohammedan blue glaze
170. 蓝釉鱼纹带盖碗	175	170. Blue glazed covered bowl with fish design
171. 龙泉窑青釉龙凤纹双耳瓶	176	171. Two handled celadon vases with dragon and phoenix design
172. 龙泉窑青釉孔雀牡丹纹绣墩	177	172. Celadon garden stool with peacocks and peony design
清代	179	<i>Qing Dynasty</i>
173. 青花缠枝牡丹纹盖罐	180	173. Blue and white covered jar with poney scroll design
174. 青花缠枝番莲纹双耳鹿头尊	181	174. Blue and white <i>zun</i> -vase with deer-head shaped handles and passionflower scroll design
175-179. 青花五谷盖罐 (五件)	182	175-179. Blue and white covered jar for the Five Cereals, Five pieces
180. 青花雉鸡牡丹纹盖罐	184	180. Blue and white covered jar with design of peony vine and pheasants
181. 青花瑞兽纹瓶	185	181. Blue and white vase with auspicious animal design
182-183. 青花昭君出塞图盖罐	186	182-183. Blue and white covered jar with picture of Zhao Jun Chu Sai
184. 青花云肩花卉纹盖罐	188	184. Blue and white covered jar with floral design
185. 青花麒麟纹盘	189	185. Blue and white plate with unicorn design
186. 青花人物故事图净水碗	189	186. Blue and white bowl with figure design
187. 釉里三彩鹤鹿同春图瓶	190	187. Vase with underglaze <i>sancai</i> design of Crane and Deer in Spring
188. 青花人物故事图大笔筒	191	188. Blue and white brush pot with figure design
189. 青花釉里红海水双龙纹缸	191	189. Jar with underglaze blue and red design of sea water and double dragons

190-191. 青花云龙纹尊	192	190-191. Blue and white <i>zun</i> -vase with design of cloud and dragons
192. 青花云龙纹大盘	194	192. Blue and white plate with design of cloud and dragons
193. 青花缠枝葫芦飞蝠纹瓶	195	193. Blue and white vase with design of gourds and bats symbolizing happiness and high rank
194. 青花缠枝莲纹钵	196	194. Blue and white <i>bo</i> -bowl with design of lotus scroll
195. 青花灵芝纹鼻烟壶	196	195. Blue and white snuff bottle with design of <i>lingzhi</i> immortal fungus
196. 青花云蝠纹笔筒	197	196. Blue and white brush pot with design of cloud and bats
197. 青花瓜纹瓜棱式瓶	198	197. Blue and white lobed vase with melon spray design
198. 青花红彩龙纹盘	198	198. Blue and white plates with red dragons design
199. 青花折枝花卉纹六方贯耳瓶	199	199. Blue and white hexagonal vase with lugs on shoulder and floral spray design
200. 青花缠枝花卉纹蒜头口绶带扁壶	200	200. Blue and white garlic-mouth flask with ribbons attached to the body and design of floral scroll
201. 青花八吉祥纹宝月瓶	201	201. Blue and white moonflask with design of the Eight Buddhist Emblems
202. 青花折枝花果纹蒜头瓶	201	202. Blue and white garlic-mouth vase with design of fruit and floral sprays
203-204. 青花经文盖钵	202	203-204. Blue and white covered <i>bo</i> -bowl with Buddhist sutra design
205. 青花釉里红云龙纹天球瓶	203	205. Blue and white globular vase with underglaze red design of cloud and dragons
206. 釉里红团龙纹葫芦瓶	204	206. Double-gourd vase with underglaze red design of dragon medallions
207. 釉里红朵莲纹尊	205	207. Flask with lugs on shoulder and underglaze red floral design
208. 釉里红“福禄”纹四方瓶	206	208. Square vase with underglaze red design of bats and gourds

209. 青花缠枝莲托八吉祥纹执壶	207	209. Blue and white ewer with design of lotus scroll and the Eight Buddhist Emblems	225	244. 黑地绿彩花鸟纹瓶	225	244. Vase with green design of flowers and birds over black ground
210. 青花御制诗海棠式洗	207	210. Blue and white crabapple shaped washer with imperial poem design	226	245-246. 珊瑚红地珐琅彩花鸟纹瓶	226	245-246. Vase with enamel design of flowers and birds over coral red ground
211. 青花莲托八吉祥纹壶	208	211. Blue and white pot with design of lotus and the Eight Buddhist Emblems	228	247-248. 粉彩茶梅纹盘	228	247-248. Famille rose plate with design of camellia and plum blossom
212-213. 青花御窑厂图桌面	209	212-213. Blue and white table-board with a picture of imperial porcelain factory	229	249. 粉彩人物故事图瓶	229	249. Famille rose vases painted with picture of ladies
214. 五彩锦地百鸟朝凤图盖罐	212	214. Covered jar with <i>wucai</i> design of all birds paying homage to the phoenix	230	250. 粉彩花蝶纹碗	230	250. Famille rose bowl with design of flowers and butterflies
215. 斗彩雉鸡牡丹纹碗	213	215. <i>Doucai</i> bowl with pheasant and peony design	230	251. 白釉墨彩山水图杯	230	251. White glazed cup with black enamel landscape design
216. 斗彩鱼藻纹盖罐	213	216. <i>Doucai</i> covered jar with design of fish and waterweed	231	252. 白釉墨彩山水图墨床	231	252. White glazed ink-bed with black enamel landscape design
217. 五彩八仙人物纹觚	214	217. <i>Wucai gu</i> -vase with design of the Eight Immortals	232	253. 斗彩勾莲八吉祥纹盘	232	253. <i>Doucai</i> plate with design of lotus sprays and the Eight Buddhist Emblems
218. 五彩人物故事图盖罐	215	218. Covered jar with <i>wucai</i> picture of ladies	233	254. 斗彩花卉纹尊	233	254. <i>Doucai zun</i> -vase with floral spray design
219-227. 五彩人物花鸟纹瓷砖 (正面)	216	219-227. <i>Wucai</i> porcelain bricks with design of figure, flowers and birds	234	255. 珐琅彩人物纹鼻烟壶	234	255. Enamel snuff bottle with picture of mother and babies
228-236. 五彩人物花鸟纹瓷砖 (背面)	218	228-236. <i>Wucai</i> porcelain bricks with design of figure, flowers and birds (Back view)	235	256. 珐琅彩紫地富贵瓶	235	256. Enamel vases with design of floral sprays over purple ground
237-238. 素三彩三果纹盘	220	237-238. <i>Su sancai</i> (Lit. plain three colours) plate with fruit spray design	236	257-259. 外粉彩内青花镂空花果纹六方套瓶	236	257-259. Famille rose hexagonal vase with openwork panels of flower and fruit sprays and underglaze blue vase inside
239. 白釉描金开光红彩花蝶纹瓶	221	239. White glazed vase painted in red colour and liquid gold with flowers and butterflies	238	260-261. 粉彩鸡缸杯	238	260-261. Famille rose cup with chicken design
240-241. 白釉淡描红彩仙人祝寿图碗	222	240-241. White glazed bowl painted in red colour with design of immortals congratulating birthday	239	262. 粉彩观音菩萨像	239	262. Famille rose statue of Avalokitesvara Bodhisattva
242. 斗彩花鸟纹提梁壶	223	242. <i>Doucai</i> loop-handled teapot with design of flowers and birds	240	263. 蓝釉描金百寿字纹瓶	240	263. Blue glazed vase decorated with One hundred liquid gold <i>shou</i> (longevity) characters
243. 斗彩团菊纹杯	224	243. <i>Doucai</i> cup with design of chrysanthemum medallion	241	264. 仿汝窑题诗笔筒	241	264. Brush pot in imitation of Ru ware with poem design
			241	265. 豆青釉加彩笔筒	241	265. Pea-green glazed brush pot with famille rose plum blossom and poem design
			242	266-268. 仿石釉双联笔筒	242	266-268. Double-bodied brush pot in imitation of stone object