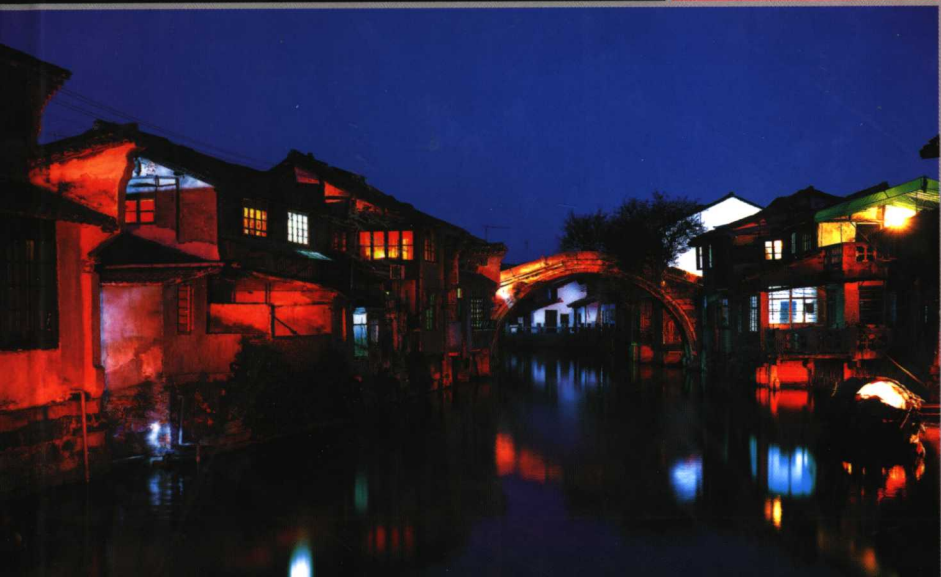
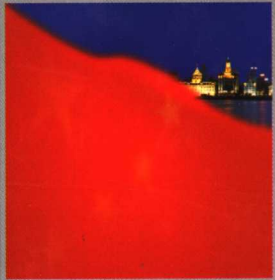


# CHINA 中国 SHANGHAI

陈海汶 主编 上海文化出版社



中国  
SHANGHAI 上海  
C H I N A

上海文化出版社  
SHANGHAI CULTURAL PUBLISHING HOUSE  
陈海汶 主编

## 图书在版编目(CIP)数据

中国上海:缩印本/陈海汶主编. - 上海:上海文化出版社,2005  
ISBN 7-80646-780-7

I. 中… II. 陈… III. 上海市-概况-画册 IV. K925.1-64

中国版本图书馆 CIP 数据核字(2005)第 018096 号

---

责任编辑 孙 欢

书 名 中国·上海  
出版发行 上海文化出版社  
地 址 上海市绍兴路 74 号  
邮 编 200020  
电子信箱 cs lcm@public1.sta.net.cn  
网 址 www.s lcm.com  
经 销 新华书店  
印 刷 利丰雅高印刷(深圳)有限公司印刷  
开 本 889×1194 1/20  
印 张 26  
插 页 4  
版 次 2005 年 7 月第 1 版 2005 年 7 月第 1 次印刷  
印 数 1—2,500 册  
国际书号 ISBN 7-80646-780-7/J·154  
定 价 100.00 元

告读者 如发现本书有质量问题请与印刷厂质量科联系

T: 0755-26645100

CHINA® SHANGHAI

中  
国  
上  
海

大川，高山

一个民族的秉性

早在她诞生前的河山之间

久久酝酿

有惊涛骇浪的奔放

有山远水阔的坦荡

九州八方，我们欣赏每一个动人的角度

000 001



*Great rivers and high mountains  
Are the cradle of a nation's nature  
Which has long been cultivated prior to the  
nation's naissance.  
There are bold and unrestrained waves.  
There are magnanimous charms among distant  
mountains and wide rivers.  
We appreciate every attractive part all over  
China.*



历史的文脉

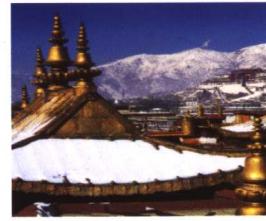
一头枕靠苍茫大漠

一头遥望浩瀚海洋

绵亘千年而不朽

长卷悠悠，我们品读每一页深远的篇章

002 · 003



*China has a long history of culture.*

*Closely related with boundless deserts on one side,*

*And vast seas on the other side,*

*Stretching continuously and everlastingly for a thousand years*

*China is like a long scroll*

*On each page of which we may peruse the profound meaning.*





黄河壶口瀑布





CHINA SHANGHAI

中  
国  
上  
海

矗立千年的宫殿

眉宇间，透射出智慧的灵光

与龙腾、与狮舞、与鼓喧

跨越新千年，华夏民族的心

共同唱和盛世中国的赞歌

004 · 005



*The light of wisdom is reflected from the  
palaces towering aloft for a thousand years.  
Soaring with dragons, dancing with lions,  
singing with drums,  
At the time of a new millennium being  
ushered in, hearts of the Hua Xia nation  
Are chorusing the triumphant songs for  
prosperous China.*











上海全市面积6340.5平方公里，占全国总面积的0.06%，境内辖有崇明岛，面积为1041平方公里，是我国的第三大岛。至2003年末，上海共有18个区、1个县，118个镇，3个乡，99个街道办事处，3293个居民委员会和1991个村民委员会。



Shanghai covers a total area of 6340.5 square kilometers, accounting for 0.06% of the total area of the whole country. Chongming Island, the third largest island in China, covering an area of 1041 square kilometers, is located here. By the end of 2003, Shanghai has altogether 18 districts and one county, which consist of 118 townships and 99 subdistricts, which are, in turn, divided into 3293 residential communities and 1991 villages.













# 海上上升明月，明珠耀东方

上海，这个太平洋西岸最繁华的城市，每时每刻都在发生着巨大的变化。这种变化足以令所有生活在这片土地上的人由心底产生莫名的激动。21世纪，世界的发展看中国，中国的发展看上海。今日上海，正以世界级城市的气魄向世人展现无穷魅力，正开敞包容四海的博大胸怀将目光投向更远。

Bright moon rises over the sea.

Bright pearl irradiates the orient

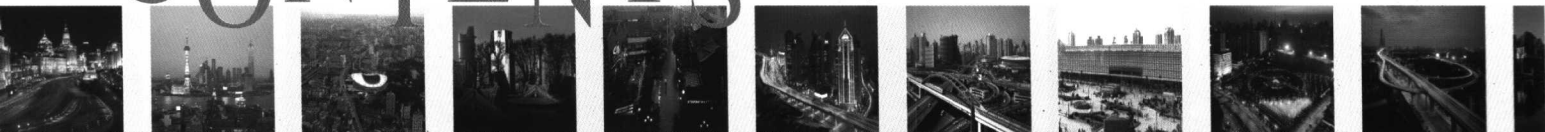
Every minute, great changes are taking place in Shanghai, one of the most flourishing and bustling city on the west coast of the Pacific Ocean. In 21 century, when people talk about the world's development, they turn their eyes to China. While in China, people treat Shanghai as the representative of the fastest development. Today Shanghai is opening her arms wide to welcome the challenges and opportunities, displaying her charm of being a world cosmopolis.

010 · 011



# CONTENTS

目·录



上海·杨浦区  
Yangpu District of Shanghai

上海·普陀区  
Putuo District of Shanghai

上海·闸北区  
Zhabei District of Shanghai

上海·徐汇区  
Xuhui District of Shanghai

上海·长宁区  
Changning District of Shanghai

上海·卢湾区  
Luwun District of Shanghai

上海·静安区  
Jing'an District of Shanghai

上海·虹口区  
Hongkou District of Shanghai

上海·浦东新区  
Pudong New Area of Shanghai

上海·黄浦区  
Huangpu District of Shanghai

001

024

048

064

082

104

124

142

154

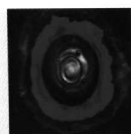
166





附录

Appendix



后记

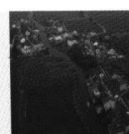
Postscript



上海

奉贤区

Fengxian District of Shanghai



上海

松江区

Songjiang District of Shanghai



上海

青浦区

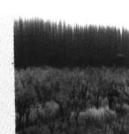
Qingpu District of Shanghai



上海

嘉定区

Jiading District of Shanghai



上海

南汇区

Nanhui District of Shanghai



上海

崇明县

Chongming County of Shanghai



上海

金山区

Jinshan District of Shanghai



上海

宝山区

Baoshan District of Shanghai

