

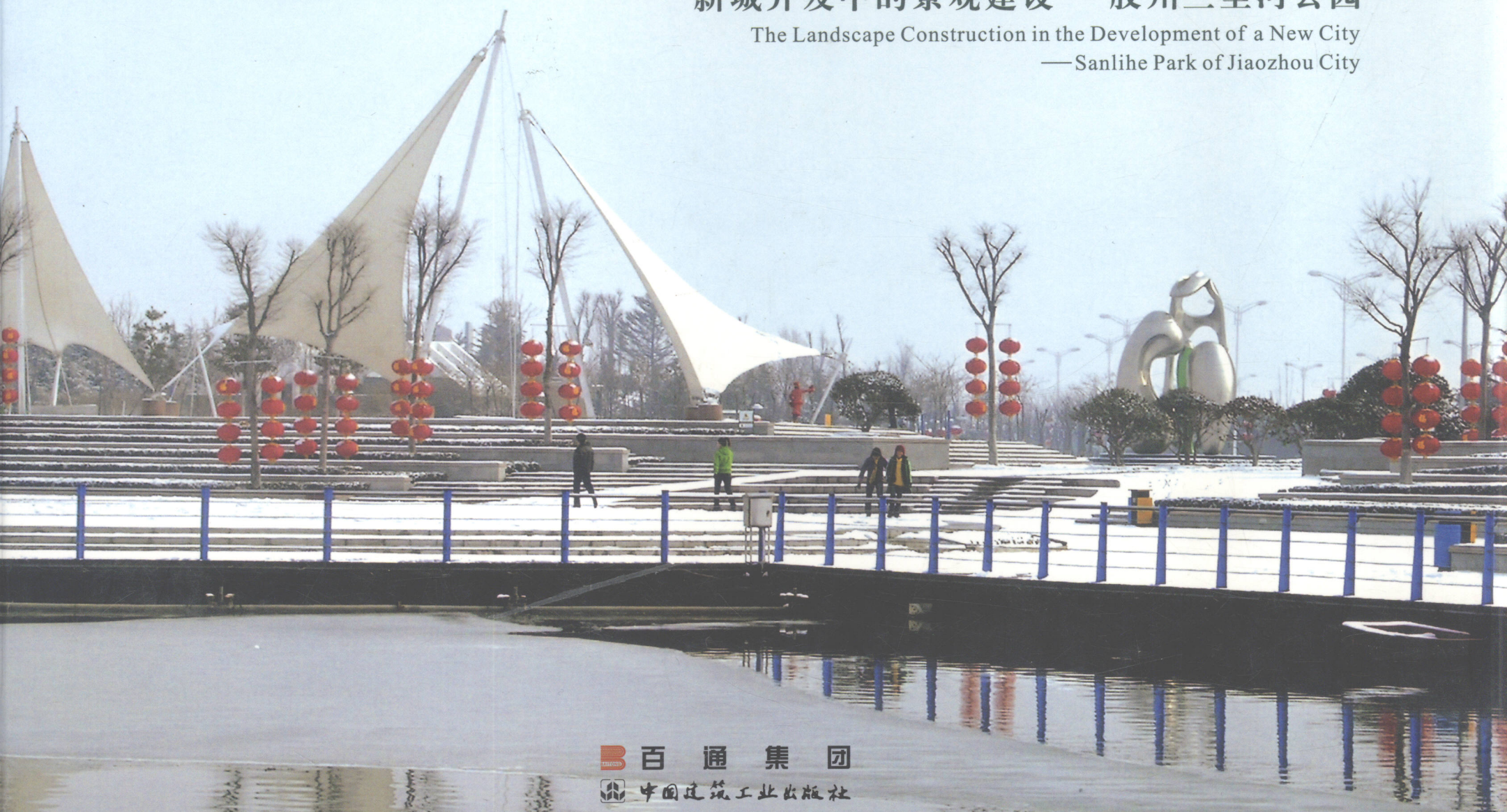
主编 王光金

# 经典源于完美

Classicality Originates from Perfection

新城开发中的景观建设——胶州三里河公园

The Landscape Construction in the Development of a New City  
— Sanlihe Park of Jiaozhou City



百通集团  
中国建筑工业出版社

# 经典源于完美

Classicality Originates from Perfection



## 新城开发中的景观建设——胶州三里河公园

The Landscape Construction in the Development of a New City  
— Sanlihe Park of Jiaozhou City

主 编 王光金

Editor-in-Chief Wang Guangjin

副主编 刘熬立 姜顺聚 周兆和

Associate Editors Liu Aoli Jiang Shunju Zhou Zhaohe

## 图书在版编目 (CIP) 数据

经典源于完美 / 王光金主编. —北京: 中国建筑工业出版社, 2006  
ISBN 7-112-05253-X

I. 经... II. 王... III. 公园—景观—园林设计—  
胶州市 IV. TU986.2

中国版本图书馆 CIP 数据核字 (2006) 第 054240 号

责任编辑: 常 燕 张华桥  
美术编辑: 王宝华

### 百 通 集 团

广东科技出版社	北京出版社
吉林科学技术出版社	中国建筑工业出版社
辽宁科学技术出版社	电子工业出版社
天津科学技术出版社	浙江科学技术出版社
河南科学技术出版社	云南科技出版社
安徽科学技术出版社	上海科学技术出版社
黑龙江科学技术出版社	江苏科学技术出版社
江西科学技术出版社	广西科学技术出版社
贵州科技出版社	北京科学技术出版社
四川科学技术出版社	新疆科学技术出版社

## 经典源于完美

新城开发中的景观建设——胶州三里河公园

王光金 主编

百通集团、中国建筑工业出版社出版、发行

新华书店经销

深圳华新彩印制版有限公司 印刷

开本: 889 × 1194 毫米 1/12 印张: 16.5

2006 年 6 月第一版 2006 年 6 月第一次印刷

定价: 238.00 元

ISBN 7-112-05253-X

(10867)

版权所有 翻印必究

如有印装质量问题, 可寄百通集团退换

本社网址: <http://www.china-abp.com.cn>

<http://www.btbook.com>

网上书店: <http://www.china-building.com.cn>

编委会名单

特约顾问: 陈为邦 刘滨谊

主 任: 曹友强

副 主 任: 王进 傅明先 王光金

主 编: 王光金

副主编: 刘熬立 姜顺聚 周兆和

编 委: 李金成 王玉明 宋振华 孙鹏 贾志学  
龚仁明 柳博 张启荣 涂善忠 赵永康

摄 影: 王玉明 王炳慧 姜顺聚 刘熬立 王斌

Editorial Board

Special Consultant: Chen Weibang Liu Binyi

Director: Cao Youqiang

Associate Director: Wang Jin Fu Mingxian Wang Guangjin

Editor-in-Chief: Wang Guangjin

Associate Editor: Liu Aoli Jiang Shunju Zhou Zhaohe

Members: Li Jincheng Wang Yuming Song Zhenhua Sun Peng

Jia Zhixue Gong Renming Liu Bo Zhang Qirong

Tu Shanzhong Zhao Yongkang

Photographers: Wang Yuming Wang Binghui Jiang Shunju

Wang Bin

The Sanlihe Park:

三里河公园:

The Best Model of Asia Garden Landscaping

亚洲最佳园林景观范例奖

National AAA-class Tourist Resort

国家 AAA 级旅游景区

Qingdao Scenic Spot

青岛市级风景名胜

## 序

形，象之具也。世有非常之形，后有非常之景。在胶州，理性与浪漫，经典与现代，自然与人文共生共融，绽放出灿烂的园林艺术之葩——三里河公园。

看到三里河公园是我第二次来到胶州。第一次是1992年，胶州作为华夏文明的发祥地之一，让我亲身感受到了三里河文化4 000多年的悠久历史，感受到从“板桥镇”到“金胶州”的文化积淀与底蕴，感受着“水在城中、城在水中、三河环绕、特色鲜明”的园林城市风采。这次，我充分地看到了依托三里河真遗河道建设的城市流水公园，让我由衷地赞叹和感动，其展示给我的是把生活的真实升华成艺术的意境，把历史文化演绎成园林景观的万千气象，为胶州这座东方古埠增添了别具一格的传神魅力。

三里河浓郁的人文景观和丰富的自然景观和谐辉映，一草一木、一砖一瓦，串成一道道美丽的风景线，涌动着连接大海惊涛骇浪的奔放，传承着面向未来山远水阔的坦荡。漫步在碧波荡漾、满目青翠、高树低花的三里河公园，从每一个独特的角度出发，捕捉每一个动人的画面，无不领略到美的历程、美的风韵、美的内涵。秧歌草地、胶白广场、少海连樯、介亭春树等多个主题景区，如历史画卷体现出美之古朴；音乐喷泉、四季花坛、叠石造景、水瀑嘉荫等步移景异的景观，如水彩轻绘展示美之现代；朝阳亭廊、青砖步道、亲水平台、精品园，经过精工细刻雕琢美之人文；曲水流觞、春拂瑶台、景观步行桥等巧夺天工，如浓墨重彩美之艺术；苇花秋水、绿肺氧吧、小河扁舟情趣横生，如尽情挥洒美之自然。

夏日江山丽，惠风春草香。三里河公园的建设，从一片荒芜、两岸

斑驳到焕发新颜，无不凝聚了胶州人的聪明才智和辛勤劳动；从景观规划、设计到建设施工，无不博采众长、兼收并蓄，吸收了众多的先进理念和景观元素。我相信，三里河公园会对社会各界建设者有所启示、有所裨益；我更有理由相信，胶州将更加尊重三里河遗留下来的基本格局和丰富的自然资源，把三里河上游和下游建设得更加美好，建成穿越胶州的一条流淌着文化、散发着现代气息的富有活力的景观带，为魅力胶州抒写新的壮丽篇章！

建设部原总规划师  
中国城科会副理事长

陈为邦

二〇〇六年一月

## Preface

Form is the embodiment of the spirit. Special form comes before extraordinary scenes. In Jiaozhou, reason and romance, classicality and modernity, nature and culture are harmoniously combined, giving rise to the splendid and artistic garden—the Sanlihe Park.

I saw the Sanlihe Park when I came to Jiaozhou for the second time. It was in 1992 that I first came to Jiaozhou. As one of the cradles of the Chinese civilization, it gave me the feeling of the 4000-year-long history of the Sanlihe culture, of the cultural traditions from “Banqiao Town” to “Jinjiao County” and of grandeur of the garden city distinctly characterized by “water in town, town in water; town surrounded by three rivers”. When I came here for the second time, I saw the river park of the city built on the original riverbed of the Sanlihe, which filled me with admiration and inspiration because it turned real life into artistic conception and historical culture into miscellaneous garden scenes, adding special and mysterious charm to the ancient oriental city—Jiaozhou.

Rich cultural scenes and colorful natural sights in Sanlihe are harmoniously combined. All the things, from a grass to a tree, from a brick to a tile, turn into the beautiful sight. When you stroll in the Sanlihe Park with its flowing river, lush meadows, colorful flowers and high trees, and appreciate the appealing sight from different angles, you will feel the course, atmosphere and connotation of its beauty. The Yangge (a folk dance) Meadow, the Jiaobai Square and the sights themed by Shaohai connected with a mast, Chun Trees in spring at the Jie Pavilion... showing beauty of the primitive simplicity; the Music Fountain, Four Season Parterre, Layered Rocks Landscape and nice shadows at the waterfall and some other sights changing with your movement are like watercolor paintings, representing beauty of the modern age; the Sunrise

Pavilion and Corridor, the Brick Walking Lane, the Water-friendly Platform and the Exquisite Garden are meticulously sculpted beauty of cultural scenes; the Flowing Cups On the Water, Fairyland-like platform Walking Bridge and some other man-made sights are like paintings with rich colors; the Reeds on the Autumn Water, the Green Lung Oxygen Bar and the River Boat are so interesting that they are like traditional Chinese paintings, revealing beauty of the nature.

The rivers and mountains shine brightly in the summer sun; the grass smells sweetly in the spring wind. Construction of the Sanlihe Park, which takes a great change from desolation and shabbiness to a completely new sight, would not be possible without wisdom and labor of the Jiaozhou people; planning, designing and building of the park were all based on the essence of every department and drew a lot of inspiration from some advanced ideas and concepts on gardening and landscaping. I believe that the Sanlihe Park will benefit and inspire all the builders of the society; I have more confidence that Jiaozhou will pay more respect to the basic pattern and rich natural resources left by the Sanlihe River, make more improvement to the upper and lower reaches of the Sanlihe River and succeed in building a dynamic landscape strip flowing with cultural and modern dynamism through Jiaozhou, adding a magnificent new chapter to the charm of Jiaozhou.

Former general planner  
Vice chairman of the Urban Science Society of China

陈为邦

January 2006





# 目 录

三里河记	胶州市人民政府	9
第一章 总述		11
胶州市三里河公园总体规划	胶州市城乡建设局	14
环境美与环境艺术的创造		
——透过胶州三里河公园看城市景观的设计与实施	王光金	32
园林空间的景观设计及其要素	姜顺聚	42
从回忆到回归		
——从三里河公园看城市更新中的文化解读与传承	周兆和	52
从三里河公园说景观	刘熬立	64
第二章 景观建筑		77
第三章 水景		96
第四章 景观小品		133
第五章 硬质景观		158
第六章 植物景观		168
第七章 雪景		184
后记		196
附录		197

# Contents

Memorial of the Sanlihe	The People's Government of the Jiaozhou City	10
I . Summary		11
The General Planning of the Sanlihe Park in Jiaozhou	Jiaozhou Municipal Urban & Rural Construction Bureau	14
Creation of Environmental Beauty and Art		
——On the Design and Execution of the City Landscape in Light of the Sanlihe Park of Jiaozhou	Wang Guangjin	32
Landscape Design and Elements of the Garden	Jiang Shunju	42
From Recalling to Returning		
——Looking into Cultural Interpretation and Inheritance during Urban Renovation from the Perspective of the Sanlihe Park	Zhou Zhaohe	52
On Landscape Architecture through Analysis of the Sanlihe Park Designing	Liu Aoli	64
II . Viewing Architecture		77
III . Water Feature		96
IV . Sculpture		133
V . Solid Feature		158
VI . Plant Feature		168
VII . Snow View		184
Postscript		196
Appendix		198

# 三里河記

三里河自九龍山蜿蜒而出，因與板橋舊鎮相去三里而得名。傍大沽，依膠萊，携千年歷史之古韻，攬東夷文化之遺風，不迂不迴，一瀉入海。

陽春三月，風和日暖，繁花翠柳間聞燕嘯鶯啼，涓涓清溪邊傳浣女喧喧；夏日偶有暴雨滂沱，湧浪拍岸，蕩泥揚沙滾滾而下，其景至驚，觀者無不為之動容；至若秋水透底則靜如處子，或有游魚涔潏，流波動聲，釣者垂杆而夾岸成列；隆冬冰封則力可載人，或有童子嬉戲於其上，彼趕此追而繞若走蛇。是河也，歷經滄桑而不磨，周而復始，四季皆榮。

上溯四千年即有先民依河而居，刀耕漁獵，製陶立業，以『三里河文化』獨領東夷文明之風騷。唐宋始起集民愈織，一時少海連檣商船輻輳，內匯江南，外通高麗，定名板橋鎮，并立為北

宋五埤之一。明清以來，富賈巨商咸集，文人名家輩出，更得『金膠州』之美譽。

世紀初，河畔拔新城一座，展公園一處，集現代建築於兩岸，顯時代風流於一體；時逢改革開放，政通人和，三里河已是今非昔比。

『水之韻』翔風涵澹，清波漪連，臺榭臨溪，河潤九里，『綠之音』茂樹蔭蔚，蝶舞鵲棲，瑞蓮融池，苔島浮翠。

『石之舞』鏤月裁雲，如龍如虯，不雕不鑄，栩栩而生。更有雙橋飛架，平湖揚帆，噴泉疊舞，珠連暎輝。秀水蘊秧歌，三彎九動十八態，韻味無窮；沃土育膠白，盛名遠播傳天下，世稱蔬皇。

漫步遊人，讚嘆其精博華美之時，似已體悟到河畔人民撥水堆山，令上林為之遜色，留雲邀月，使金穀為之退舍之氣概。

噫乎哉！三里河載古拓今，永往直前矣。

公元二零零四年九月



## Memorial of the Sanlihe

The Sanlihe, winding its way from the Jiulong Mountain, is so named because it is three Li away from the old Banqiao Town. Beside Dagou River and along Jiaolai River, the river flows straightly to the sea with its thousand-year-long history and oriental cultural traditions.

In spring, with the gentle breeze and warm sunshine, flowers are blooming and trees are sprouting, birds are singing in them, and some girls washing by the clear river are talking and laughing; in summer, sometimes rain pours down like shower, stirring the waves in the river and making the sand and mud rolling down, which are so breath-taking that people who see it are fascinated; in autumn, the water is crystal-clear and peaceful with fish swimming quietly in it, and some anglers line up by the river to enjoy fishing; in winter, when the water freezes, people can stand on the surface of the river and children play happily and chase each other on it. The river remains to be as it is after so many years, taking its own course and prospering all the year round.

Back to four thousand years ago, there were people living on the river, farming and fishing, making potteries and building houses, leading the oriental civilization with the Sanlihe culture. From the Tang and Song Dynasties, more and more people settled here, and over time many merchant ships streamed in the river, which connected the southern areas to Gaoli, and the place was named Banqiao Town and established as one of the five ports of the Northern Song Dynasty. From the Ming and Qing Dynasties, many rich merchants swarmed here and dozens of famous writers were born here, making it well-known as "golden Jiaozhou".

At the beginning of the 21th century, a New District of Jiaozhou City arises on the river with a new park in it and modern buildings along it, leading the age with its new sights; chancing the age of reform and opening-up, the Sanlihe is not what it used to be. The "rhyme of water" ripples in the gentle wind; pavilions stand by the river with elegance. The "sound of green" scene is covered with lush trees, butterflies flying and birds perching, lotus blooming and lichen floating in the pond. The "dance of stones" sight is so delicately carved and sculpted that it looks like dragons and tigers as if they were real and alive. What's more, there are twin bridges, lake boats, dancing fountains and rippling lakes. The river enriches the folk dance "Yangge" with its winding course featured by three bends, nine moves and eighteen forms; the fertile land gives birth to "Jiaobai", a kind of vegetable spreading its reputation far and wide. The world calls it "Shuhuang" (the emperor of vegetables). When strolling in the park, visitors seem to have appreciated the spirit of the people living on the river who build so beautiful a park and so great a city.

Alas! The Sanlihe flows relentlessly from the past through the present to the future.

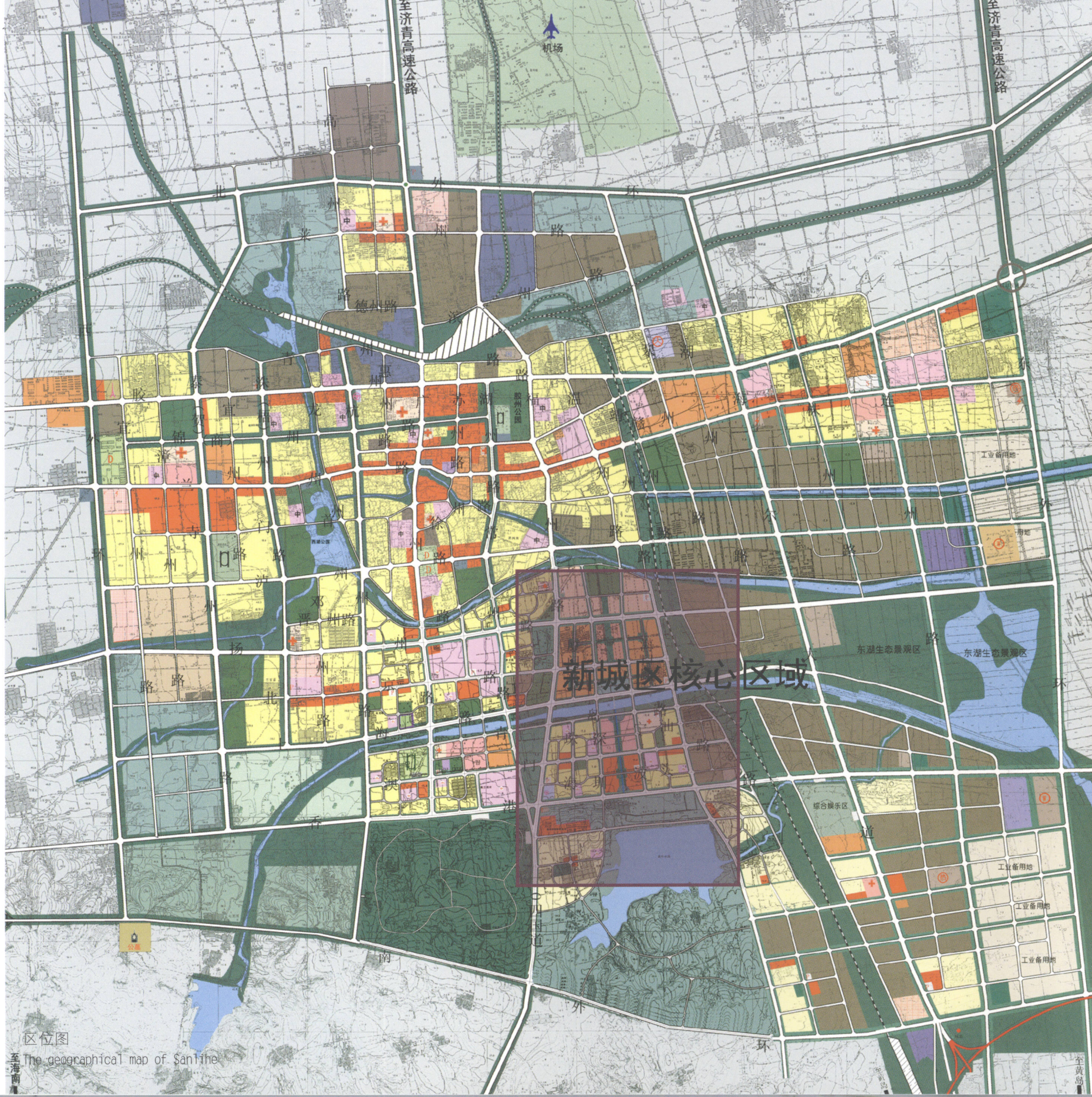
The People's Government of the Jiaozhou City

September 2004

经典·完美 第一章 总述

---

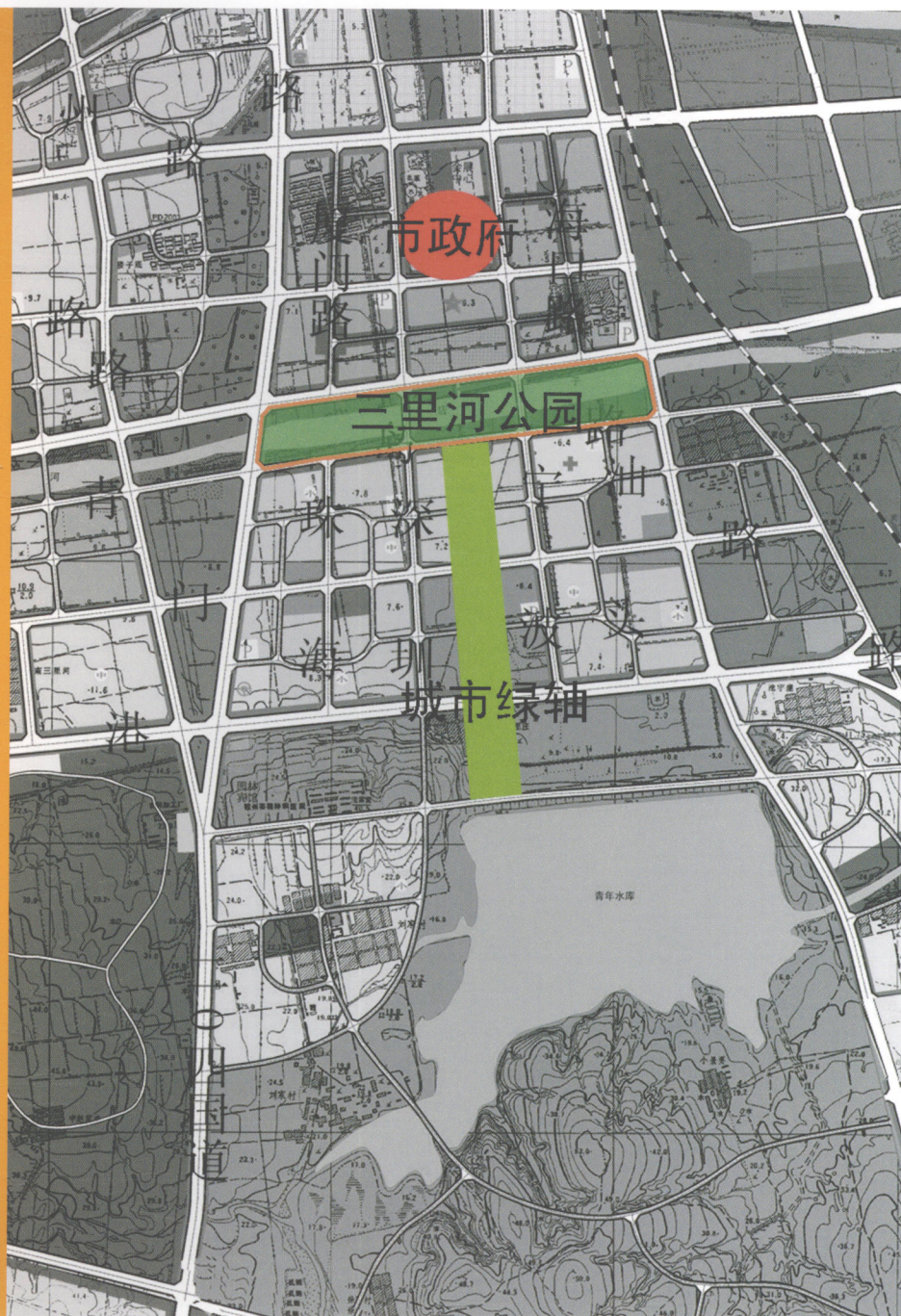
||. Summary



新城核心区

区位图  
The geographical map of Sanlihe

至黄岛



新城区规划图  
The layout plan of a new city

# 胶州市三里河公园总体规划

胶州市城乡建设局

三里河公园作为一个较大型的开放式公园,既是城市绿地系统的组成部分,也是城市的开放空间,是为市民提供消遣、游览、观赏、健身、娱乐等活动的场所。因此三里河公园是胶州城市建设重要和有机的组成部分。三里河公园的设计成果不仅在于完善公园的配套设施,更要使得公园自身的规划结构、设计细节能够呼应和显现城市中有生命力的、整体而宏观的空间布局、结构以及相关的脉络体系,它不是通俗意义上“封闭”的园林,而是来源于城市、服务于城市的景观设计。因此我们从景观设计的层面对三里河公园的总体规划加以表述。

## 一、用地现状及背景

### 1. 基地基本概况

三里河公园位于胶州市新城区,西起福州路,东至温州路,南起青岛路,北至上海路。胶州市主要河流之一的“三里河”呈东西向贯穿公园基地,将基地分成南北两块。基地北岸主要为滨水休闲带,宽幅约29m。基地南岸腹地较大,为公园的主要用地。整个公园占地约220 000m<sup>2</sup>。三里河是一条间歇性河流,在景观开发之前主要作为泄洪河道,泄洪要求河道宽度超过48m。

三里河公园在胶州市占有十分重要的地理区位。其北部为胶州市行政办公区,南部

## The General Planning of the Sanlihe Park in Jiaozhou

Jiaozhou Municipal Urban & Rural Construction Bureau

As a large open park, the Sanlihe Park is part of the greenbelt system of the city as well as the open space of the city, where citizens can go through the city center at their own will, and it serves as a place for recreation, visiting, body-building and entertainment. Therefore the Sanlihe Park is an important and integral part of the Jiaozhou City. The design of the Sanlihe Park excels not only in improving the park itself, but also in matching the structure and details of the park design with the dynamic overall macro spatial layout and structure and relevant details of the city, so it is not the “closed” park in a common sense, but a landscape design that comes from and serves the city. So we'll elaborate on the Sanlihe Park from the perspective of landscape design.

## I. The Current Situation of Land Using and the Background

### 1. The General Situation of the Base

The Sanlihe Park is situated in the New District of Jiaozhou City, Fuzhou Road to its west, Wenzhou Road to its east, Qingdao Road to its south and Shanghai Road to its north. The Sanlihe River, one of the major rivers of the Jiaozhou City, flows east to west through the base of the park, dividing the base into the northern part and the southern part. The northern bank is mainly the recreation belt, about 29 meters wide. The southern bank has a more vast area, so it is the major part of the park, which occupies an area of about 22 hectares. The Sanlihe River, which flows on and off, was used as a spillway before its landscape development. A river has to be 48 meters wide for being used as a spillway.

The geographic position of the Sanlihe Park is very important

为大型公共建筑聚集区(规划建设博物馆、科技馆、大型超市等),因此三里河公园在中部起着承上启下的作用。在这些重要建筑的中央是新城区的中轴景观带,市级机关办公大楼就坐落于中轴线的端头,而三里河公园也是中轴景观带的收头,因此可以毫无疑问地说三里河公园的周边区域是胶州市未来城区发展的核心。通过三里河公园优美环境的建造,将对未来城区的进一步启动和发展起着示范作用,同时也将带动和引导周边地块的城市建设与发展。因此胶州市委、市政府对三里河公园的建设高度重视,提出了“高起点规划、高水平设计、高标准建设”的要求。

## 2. 城市人文历史概况

胶州是华夏文明发祥地之一,历史悠久,文化灿烂。4 000年前,即有先民在这里刀耕渔猎、繁衍生息。商业贸易相当发达,唐宋时期曾是全国五大商埠之一、长江以北惟一的通商口岸,素有“金胶州”之美称。胶州人杰地灵,创造了世界闻名的新石器时代;原始氏族社会的三里河文化,有西汉掖国旧址,明代养马城“牧马城”遗址,清代著名书画篆刻艺术家、被列为“扬州八怪”之一的左笔高手高凤翰的故居旧址,以及大量的古墓葬、古庙宇和金石碑刻、书画诗文。勤劳智慧的胶州人民孕育了丰富多彩的民间艺术,具有300多年历史的“胶州大秧歌”驰名中外,全国保留剧种胶州茂腔及民间戏曲、剪纸绘画等也都在国内外有一定的艺术影响力。三里河公园依托三里

for the Jiaozhou City. To its north is the administrative office building of the Jiaozhou City, and to its south are a lot of large-scale public buildings (the planning and building museums, the science and technology museums, large supermarkets and so on), so the Sanlihe Park serves as a transition in the middle. Besides, in the center of these important buildings is the axial landscape belt of the New District of Jiaozhou City. The office building of the municipal government lies at one end of the axis while the Sanlihe Park is situated at the other end of the axis, so there is no doubt that the surrounding areas of the Sanlihe Park will be the core of future development of the city. The desirable environment of the Sanlihe Park will serve as a good example for further development of the city in the future as well as promote and guide the urban construction and development of the surrounding areas with its influence. Therefore the municipal committee and government of the Jiaozhou City attach great importance to construction of the Sanlihe Park and put forward the requirement of "planning at a good starting point, designing at a high level and building on a high standard".

## 2. The General Situation of the City's Culture and History

As one of the cradles of the Chinese culture, Jiaozhou boasts a long history and splendid culture. Four thousand years ago, there were people living here on farming and fishing. Trade and commerce boomed here. Well known as "golden Jiaozhou" since a long time ago, it was one of the five major business ports nationally in the Tang and Song Dynasties and the only commercial port to the north of the Yangtze River. Jiaozhou is a great place, creating the world renowned Sanlihe culture of the primitive tribal society in the new stone age, boasting the sites of the Ba Kingdom in the West Han Dynasty, of the "herding city" in

河真遗河道, 将努力挖掘和汲取上述历史和文化精髓, 结合现代造园手法, 创造出高水准的开放式公园。

## 二、设计目标

充分利用和发挥三里河公园的自然条件、行政文化资源, 合理依据胶州市新城区的城市骨架, 将其建设成为以人为本、生态环境优美、功能布局合理、基础设施完美的生态型现代公园。力争塑造一个具有时代精神和景观特色, 国内一流, 在北方城市中具有示范意义的典范公园。设计中应充分展现新城区的“新气象”、“新观念”、“新核心”。

## 三、设计指导思想

### 1. 公园结构要体现整体性的原则

景观设计在本质上说, 是一种城市设计, 因此整体性原则是景观设计的重要手段, 在规划设计中主要表现在三个方面:

(1) 和市政府及周边的景观建筑、景观中轴取得整体性效果

市政府及周边的景观建筑、景观中轴是胶州市新城区的核心骨架, 是贯穿于新城区的南北轴线。而三里河呈东西向, 和此中轴线相交, 因此三里河中部的中央景区也是中轴景观带的一部分, 起着承上启下的作用。由于市政府及其周边的市属机关办公大楼呈“品”字形布局, 结构方正严谨, 中轴对称, 因此三里河在中央景区的结构要符合此“对称”的格局, 以达到上下呼应的整体效果。同

the Ming Dynasty, and of the old house of Gao Fenghan, one of "eight geniuses in the Yangzhou", writing with his left hand, and abundant ancient tombs, ancient temples, stone engravings, works of calligraphy and paintings and so on. The industrious and clever Jiaozhou people created a variety of folk culture. The "Great Yangge in Jiaozhou" with a history of more than three hundred years made its reputation both at home and abroad. The Jiaozhou Mao Opera, one of the nationally preserved operas, and folk paper-cut and painting are also influential artistically inside and outside the country. The Sanlihe Park is along the original riverbed of the Sanlihe River, so great efforts will be made in drawing inspiration from the historical and cultural heritage mentioned above and combining them with modern gardening to create a high-level open park.

## II. The Objective of the Design

The natural conditions and cultural and administrative resources of the Sanlihe Park should be full made use of. Based on the framework of the New District of Jiaozhou City, it will be built as a human-oriented ecological modern park with beautiful environment, reasonable layout and perfect infrastructure facilities. Great efforts should be made to build a first-class model park with modern spirit and landscape features so that it will serve as an example for cities in the north. The design should show "new look", "new ideas" and "new core" of the New District of Jiaozhou City in a comprehensive way.

## III. Guiding Principles of the Design

### 1. The Park Structure Should Adhere to the Principle of Wholeness

Landscape design is a kind of city planning in essence,

时公园的整体氛围还要体现休闲性, 公园不可能也不应该过于工整, 要体现一定的自由式设计风格, 以创造休闲、愉快的氛围, 因此在中央景区大湖面的周边设计中要将公园的活跃氛围和市政府及周边的景观建筑、景观中轴对称规整的风格作整体性构思。

## (2) 南北岸的整体衔接

三里河公园将改善和提高新城区的生态环境作为其重要的设计目标之一, 因此在设计中为取得最大的生态效益和景观效果, 在基地中部拓宽河道, 形成景观生态湖面, 取代在中部设计大型硬质铺装广场的构思。由于水面扩大, 南北的交通连接就必须慎重考

so the principle of wholeness is an important means of landscape design, which is shown in the design mainly in three aspects:

### (1) Achieving a Whole Effect with the Municipal Government and the Landscape Axis

The municipal government and the landscape axis are the core framework of the New District of Jiaozhou City, going through the New District of from north to south. The Sanlihe goes from west to east, intersecting with the axis, so the central landscape in the middle of the Sanlihe is also part of the axial landscape belt, serving as a transition. As the office buildings of the municipal government and the surrounding governmental departments are arranged in the shape of the character “品” with a square, strict and symmetric structure, so the structure of the central landscape in the middle of the Sanlihe should match its symmetric layout to achieve a harmonious whole effect. Meanwhile the whole atmosphere

虑, 否则公园北岸的绿地由于宽幅较小而将被忽略为简单的道路绿化或滨水绿化。在设计中要加强北岸的休闲步道及滨水空间设计, 在南北岸之间还需要架设景观步行桥, 以方便游人的穿行, 从而将南北岸的休闲步行空间联为整体。

三里河为东西向的直条形河道, 其岸线有必要依据景观的需要来重新加以整治, 并且南北岸要突出各自特点, 既不能两者重复或雷同, 也不能相互之间没有联系, 要体现岸线形式的整体构思。

### (3) “软”、“硬”质景观要和谐

景观设计是工程和艺术相结合的设计,

