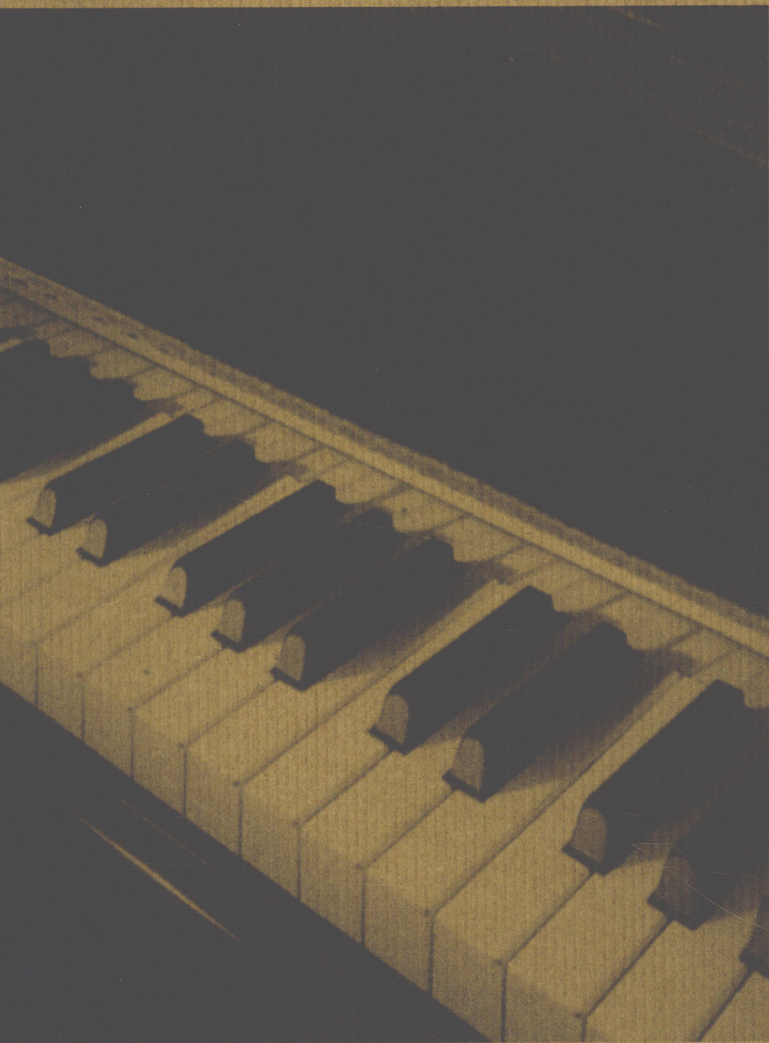


钢琴家之旅丛书



什密特

钢琴五指练习曲

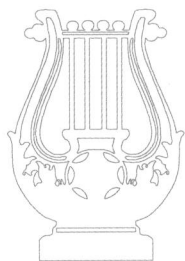
作品 16

湖南文艺出版社

钢琴家之旅丛书

什密特 钢琴五指练习曲

作品 16



湖南文艺出版社

图书在版编目 (CIP) 数据

什密特钢琴五指练习曲: 作品 16: 大开版/ (德) 什密特作曲. —长沙: 湖南文艺出版社, 2006. 1

(钢琴家之旅丛书)

ISBN 7-5404-3676-X

I. 什... II. 什... III. 钢琴—练习曲—德国—选集 IV. J657.411

中国版本图书馆 CIP 数据核字(2006)第 000703 号

钢琴家之旅丛书(大开版)

什密特

钢琴五指练习曲

作品 16

(德)什密特 作曲

责任编辑: 孙 佳 熊宇亮

*

湖南文艺出版社出版、发行

(长沙市雨花区东二环一段 508 号 邮编: 410014)

网址: www.musiced.com.cn

湖南省新华书店经销 湖南广播电视大学印刷厂印刷

*

2006 年 4 月第 1 版第 1 次印刷

开本: 970×640 1/8 印张: 4

ISBN 7-5404-3676-X

J·1071 定价: 8.00 元

若有质量问题, 请直接与本社出版科联系调换。

目 录

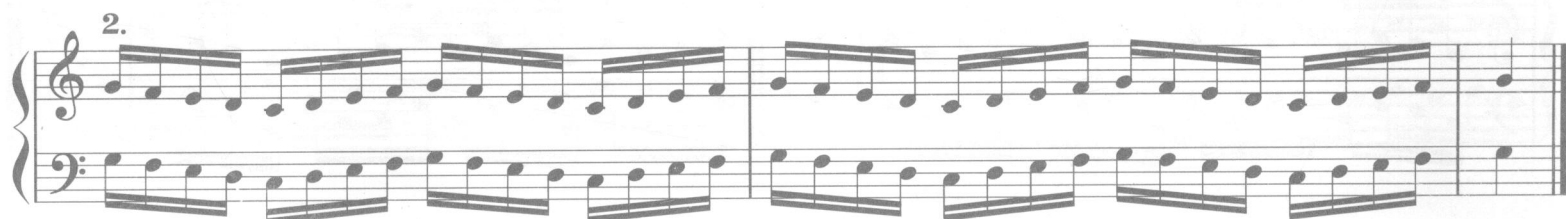
手指独立不倚和动作均衡的练习	1
拇指从他指下经过的练习	15
附录	18

钢琴五指练习曲

什密特

手指独立不倚和动作均衡的练习

每条练习弹十次以上。先分手练习，然后两手再合起来。两手弹奏时要平稳、安静。开始时要弹得很慢，然后逐渐加快。每条练习要用不同的调弹奏，指法不变。



11. 12.

13. 14.

15. 16.

17.

18.

19.

20. 21.

22. 23.

24.

25.

26.

27. 28.

29. 30.

31. 32.

33. 34. 35.

Measures 33-35: This system contains three measures of music. Measure 33 features a treble clef with a melody of eighth notes and a bass clef with a steady eighth-note accompaniment. Measure 34 has a treble clef with a melody of eighth notes and a bass clef with a steady eighth-note accompaniment. Measure 35 has a treble clef with a melody of eighth notes and a bass clef with a steady eighth-note accompaniment.

36. 37. 38.

Measures 36-38: This system contains three measures of music. Measure 36 features a treble clef with a melody of eighth notes and a bass clef with a steady eighth-note accompaniment. Measure 37 has a treble clef with a melody of eighth notes and a bass clef with a steady eighth-note accompaniment. Measure 38 has a treble clef with a melody of eighth notes and a bass clef with a steady eighth-note accompaniment.

39. 40. 41.

Measures 39-41: This system contains three measures of music. Measure 39 features a treble clef with a melody of eighth notes and a bass clef with a steady eighth-note accompaniment. Measure 40 has a treble clef with a melody of eighth notes and a bass clef with a steady eighth-note accompaniment. Measure 41 has a treble clef with a melody of eighth notes and a bass clef with a steady eighth-note accompaniment.

42. 43. 44.

Measures 42-44: This system contains three measures of music. Measure 42 features a treble clef with a melody of eighth notes and a bass clef with a steady eighth-note accompaniment. Measure 43 has a treble clef with a melody of eighth notes and a bass clef with a steady eighth-note accompaniment. Measure 44 has a treble clef with a melody of eighth notes and a bass clef with a steady eighth-note accompaniment.

45. 46. 47.

Measures 45-47: This system contains three measures of music. Measure 45 features a treble clef with a melody of eighth notes and a bass clef with a steady eighth-note accompaniment. Measure 46 has a treble clef with a melody of eighth notes and a bass clef with a steady eighth-note accompaniment. Measure 47 has a treble clef with a melody of eighth notes and a bass clef with a steady eighth-note accompaniment.

48. 49. 50.

Measures 48-50: This system contains three measures of music. Measure 48 features a treble clef with a melody of eighth notes and a bass clef with a steady eighth-note accompaniment. Measure 49 has a treble clef with a melody of eighth notes and a bass clef with a steady eighth-note accompaniment. Measure 50 has a treble clef with a melody of eighth notes and a bass clef with a steady eighth-note accompaniment.

51. 52. 53.

Measures 51, 52, and 53. Each measure consists of a treble and bass staff. Measure 51 features a rhythmic pattern of eighth notes in the treble and a steady eighth-note accompaniment in the bass. Measure 52 shows a similar pattern with slight melodic variations. Measure 53 continues the sequence with a final melodic flourish in the treble.

54. 55. 56.

Measures 54, 55, and 56. Measure 54 maintains the eighth-note accompaniment in the bass while the treble part moves to a higher register. Measure 55 introduces a more complex rhythmic pattern in the treble. Measure 56 concludes the sequence with a final chordal structure in both staves.

57. 58. 59.

Measures 57, 58, and 59. Measure 57 features a dense texture of sixteenth notes in the treble. Measure 58 continues this texture with a slight melodic shift. Measure 59 shows a transition to a more open texture with fewer notes in the treble.

60. 61. 62.

Measures 60, 61, and 62. Measure 60 has a consistent eighth-note accompaniment in the bass and a melodic line in the treble. Measure 61 shows a variation in the treble melody. Measure 62 ends with a final melodic phrase in the treble.

63. 64. 65.

Measures 63, 64, and 65. Measure 63 features a steady eighth-note accompaniment in the bass and a melodic line in the treble. Measure 64 continues the sequence with a slight melodic variation. Measure 65 concludes the sequence with a final melodic flourish in the treble.

66. 67. 68.

Measures 66, 67, and 68. Measure 66 has a consistent eighth-note accompaniment in the bass and a melodic line in the treble. Measure 67 shows a variation in the treble melody. Measure 68 ends with a final melodic phrase in the treble.

69. 70. 71.

Musical notation for measures 69, 70, and 71. Each measure consists of a treble and bass staff with a grand staff brace. The music features a steady eighth-note accompaniment in the bass and a melody of eighth notes in the treble.

72. 73. 74.

Musical notation for measures 72, 73, and 74. The structure is consistent with the previous measures, showing a treble and bass staff with eighth-note accompaniment and melody.

75. 76. 77.

Musical notation for measures 75, 76, and 77. The notation continues with eighth-note accompaniment and melody in the treble.

78. 79. 80.

Musical notation for measures 78, 79, and 80. Measures 79 and 80 show a change in the bass line, with more complex rhythmic patterns.

81. 82. 83.

Musical notation for measures 81, 82, and 83. The bass line continues with complex rhythmic patterns, while the treble melody remains steady.

84. 85. 86.

Musical notation for measures 84, 85, and 86. The final measures of the page, showing continued eighth-note accompaniment and melody.

87. 88. 89.

90. 91. 92.

93. 94. 95.

96. 97. 98.

99. 100. 101.

102. 103. 104.

105. 106. 107.

108. 109. 110.

111.* 112. 113. 114.

115. 116. 117. 118.

119. 120. 121.

122. 123. 124.

*111至127也可弹成断奏：

等。

125. 126. 127.

Musical notation for measures 125, 126, and 127. Each measure consists of a treble and bass staff with dense chordal accompaniment.

128. 129. 130.

Musical notation for measures 128, 129, and 130. Measures 128 and 129 feature dense chordal accompaniment, while measure 130 shows a more active treble line.

131. 132. 133.

Musical notation for measures 131, 132, and 133. Measures 131 and 132 show a more active treble line, while measure 133 returns to dense chordal accompaniment.

134. 135. 136.

Musical notation for measures 134, 135, and 136. Measures 134 and 135 feature dense chordal accompaniment, while measure 136 shows a more active treble line.

137. 138. 139.

Musical notation for measures 137, 138, and 139. Measures 137 and 138 show a more active treble line, while measure 139 returns to dense chordal accompaniment.

140. 141. 142.

Musical notation for measures 140, 141, and 142. Measures 140 and 141 feature dense chordal accompaniment, while measure 142 shows a more active treble line.

143. 144. 145.

146. 147. 148.

149. 150. 151.

152. 153. 154.

155. 156. 157.

158. 159. 160.*

*160至169也可弹成断奏：等。

161. 162. 163.

164. 165. 166.

167. 168. 169.

下列各条须上行、下行练习，扩展到键盘的全部音域。

170.

171.

172. 173. 174.

Exercise 172: Treble clef starts with a descending eighth-note scale (1 2 3 4 5 4 3 2), bass clef starts with an ascending eighth-note scale (1 2 3 4).
Exercise 173: Treble clef starts with a descending eighth-note scale (5 4 3 2 1 2 3 4), bass clef starts with an ascending eighth-note scale (1 2 3 4 5 4 3 2).
Exercise 174: Treble clef starts with a descending eighth-note scale (1 2 3 4 5 4 3 2), bass clef starts with an ascending eighth-note scale (1 2 3 4).

175. 176. 177.

Exercise 175: Treble clef starts with a descending eighth-note scale (5 4 3 2 1), bass clef starts with an ascending eighth-note scale (1 2 3 4 5).
Exercise 176: Treble clef starts with a descending eighth-note scale (4 5), bass clef starts with an ascending eighth-note scale (1 2 1).
Exercise 177: Treble clef starts with a descending eighth-note scale (5 4 3 2 1 2 3 4), bass clef starts with an ascending eighth-note scale (1 2 3 4 5 4 3 2).

178. 179. 180.

Exercise 178: Treble clef starts with a descending eighth-note scale (1 2 3 4 5 4 3 2), bass clef starts with an ascending eighth-note scale (5 4 3 2 1 2 3 4).
Exercise 179: Treble clef starts with a descending eighth-note scale (5 4 3 2 1 2 3 4), bass clef starts with an ascending eighth-note scale (1 2 3 4 5 4 3 2).
Exercise 180: Treble clef starts with a descending eighth-note scale (5 4 3 2 1 2 3), bass clef starts with an ascending eighth-note scale (1 2 3 4 5 4 3 2).

181. 182. 183.

Exercise 181: Treble clef starts with a descending eighth-note scale (1 2 3 4 5 4 3 2), bass clef starts with an ascending eighth-note scale (5 4 3 2 1 2 3 4).
Exercise 182: Treble clef starts with a descending eighth-note scale (1 2 3 4 5 4 3 2), bass clef starts with an ascending eighth-note scale (5 4 3 2 1 2 3 4).
Exercise 183: Treble clef starts with a descending eighth-note scale (5 4 3 2 1 2 3 4), bass clef starts with an ascending eighth-note scale (1 2 3 4 5 4 3 2).

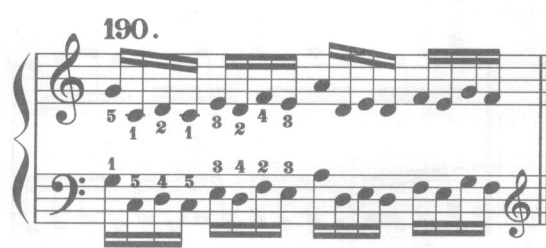
184. 185. 186.

Exercise 184: Treble clef starts with a descending eighth-note scale (5 4 3 2 1 2 3 4), bass clef starts with an ascending eighth-note scale (1 2 3 4 5 4 3 2).
Exercise 185: Treble clef starts with a descending eighth-note scale (3 2 1 2 3 4 3 2), bass clef starts with an ascending eighth-note scale (3 1 2 3 1 2 4).
Exercise 186: Treble clef starts with a descending eighth-note scale (1 2 3 4 5 4 3 2), bass clef starts with an ascending eighth-note scale (1 2 3 4 3 2 1).

187. 188. 189.

Exercise 187: Treble clef starts with a descending eighth-note scale (5 4 3 2 1 2 3 4), bass clef starts with an ascending eighth-note scale (1 2 3 4 5 4 3 2).
Exercise 188: Treble clef starts with a descending eighth-note scale (1 2 3 4 5 4 3 2), bass clef starts with an ascending eighth-note scale (1 2 3 4 3 2 1).
Exercise 189: Treble clef starts with a descending eighth-note scale (5 4 3 2 1 2 3 4), bass clef starts with an ascending eighth-note scale (1 2 3 4 3 2 1).

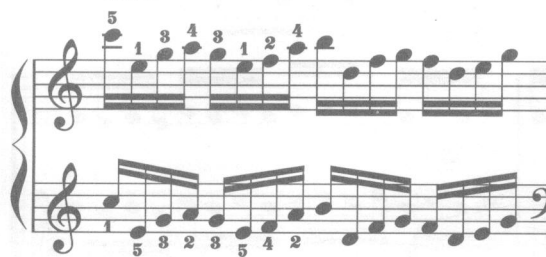
191.

190.  191.  192. 

193.

194.

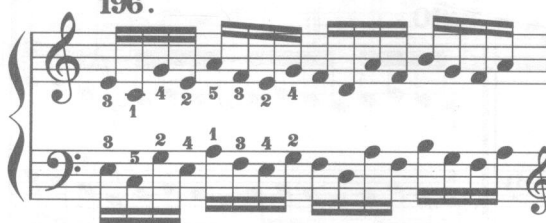


195.

193.  194.  195. 

196.

197.

198.

196.  197.  198. 

199.

200.

201.

199.  200.  201. 

202.

203.

204.

202.  203.  204. 

205.

205. 