

第15版

# 哈里森内科学

## HARRISON'S

PRINCIPLES OF  
INTERNAL  
MEDICINE

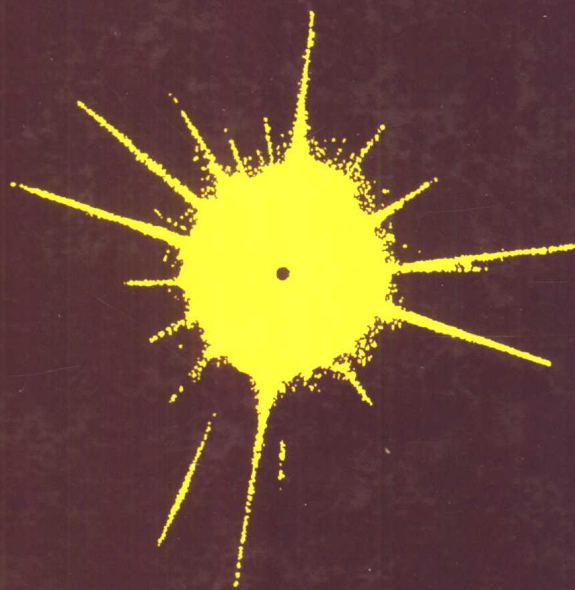
上卷

主编 BRAUNWALD FAUCI

KASPER HAUSER

LONGO JAMESON

主译 王德炳



人民卫生出版社

第15版

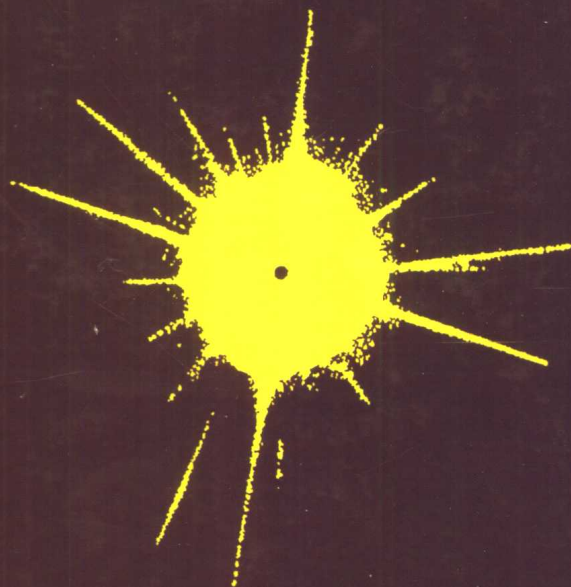
# 哈里森内科学

## HARRISON'S

PRINCIPLES OF  
INTERNAL  
MEDICINE

下卷

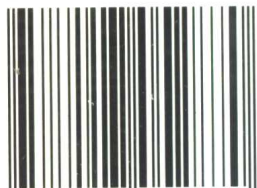
主编 BRAUNWALD FAUCI  
KASPER HAUSER  
LONGO JAMESON  
主译 王德炳



 人民卫生出版社

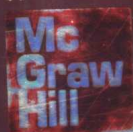
策划编辑 姬 放  
责任编辑 蔡向阳  
封面设计 陈 旻  
版式设计 魏红波

ISBN 7-117-05287-2



9 787117 052870 >

定 价(上、下卷)：580.00元



人民卫生出版社

**McGraw-Hill**

A Division of The McGraw·Hill Companies 

Eugene Braunwald, Anthony S. Fauci, Dennis L. Kasper, et al

**Harrison's PRINCIPLES OF INTERNAL MEDICINE, Fifteenth Edition**

ISBN: 0-07-007273-6 (Vol.1), 0-07-007274-4 (Vol.2)

Copyright © 2001, 1998, 1994, 1991, 1987, 1983, 1980, 1977, 1974, 1970, 1966, 1962, 1958 by the McGraw-Hill Companies, Inc.

Original language published by the McGraw-Hill Companies, Inc. All Rights reserved. No part of this publication may be reproduced or distributed by any means, or stored in a database or retrieval system, without the prior written permission of the publisher.

Simplified Chinese translation edition jointly published by McGraw-Hill Education (Asia) Co. and People's Medical Publishing House.

**哈里森内科学(上、下卷), 第15版**

本书中文简体字翻译版由人民卫生出版社和美国麦格劳-希尔教育(亚洲)出版公司合作出版。未经出版者预先书面许可,不得以任何方式复制或抄袭本书的任何部分。

**敬告:**本书的译者及出版者已尽力使书中出现的药物剂量和治疗方法准确,并符合本书出版时国内普遍接受的标准。但随着医学的发展,药物的使用方法应随时作相应的改变。建议读者在使用本书涉及的药物时,认真研读药物使用说明书,尤其对于新药或不常用药更应如此。出版者拒绝对因参照本书任何内容而直接或间接导致事故与损失负责。

#### 图书在版编目(CIP)数据

哈里森内科学(上、下卷)/(美)布郎沃德等主编;王德炳主译.

北京:人民卫生出版社,2003

ISBN 7-117-05287-2

I. 哈... II. ①布... ②王... III. 内科学 IV. R5

中国版本图书馆CIP数据核字(2002)第106850号

图字:01-2001-3815

### 哈里森内科学

(上、下卷)

主 编: Eugene Braunwald, et al

主 译: 王 德 炳

出版发行: 人民卫生出版社(中继线 67616688)

地 址: (100078)北京市丰台区方庄芳群园3区3号楼

网 址: <http://www.pmph.com>

E-mail: [pmph@pmph.com](mailto:pmph@pmph.com)

印 刷: 北京安泰印刷厂

经 销: 新华书店

开 本: 889×1194 1/16 印张: 221.5 插页: 32

字 数: 6733千字

版 次: 2003年4月第1版 2003年4月第1版第1次印刷

标准书号: ISBN 7-117-05287-2/R·5288

定价(上、下卷): 580.00元

著作权所有,请勿擅自用本书制作各类出版物,违者必究

(凡属质量问题请与本社发行部联系退换)

# 哈里森内科学

第 15 版

上 卷

主 编 EUGENE BRAUNWALD ANTHONY S. FAUCI  
DENNIS L. KASPER STEPHEN L. HAUSER  
DAN L. LONGO J. LARRY JAMESON

主 译 王德炳

秘 书 刘玉村

译 者(以姓氏笔画为序)

丁 颖	丁文惠	丁颖果	万 华	于 丽	于仲元	于岩岩	马 靖	马明信	尹 彪	尹慕军	王 军
王 华	王 进	王 艳	王力平	王广发	王东民	王全桂	王宏利	王国英	王建丽	王秋生	王贵强
王海宁	王艳荣	王雪梅	王朝霞	王勤环	王鹏远	王蔚虹	王燕斌	车文玺	邓 敏	邓小梅	邓正照
邓咏梅	田成华	白 羽	白 静	乔岐禄	任自文	任静怡	关 欣	刘 娜	刘 洪	刘 健	刘小璇
刘占兵	刘正新	刘玉村	刘如辉	刘和亮	刘英琳	刘宪义	刘朝辉	刘新民	吕 媛	吕 鹤	孙 葳
孙永昌	孙庆利	孙燕淑	庄 岩	朱元民	朱桂霞	朴海燕	许 幸	许蔚林	闫 辉	齐丽彤	何 菁
何叔瀛	何志嵩	何晋德	余 兵	余 进	吴 成	吴 迪	吴 南	吴 彦	吴 涛	吴 淳	吴士良
吴文湘	吴红花	吴赤红	宋卫东	宋红松	寿艳红	岑溪南	张 冲	张 红	张 岩	张 俊	张 晖
张 莉	张 燕	张 巍	张 鑫	张华纲	张远锦	张建中	张俊清	张彦芳	张晓春	张新宇	张黎明
李 坚	李 俊	李 荔	李 颂	李 辉	李 楠	李 澍	李大柱	李小刚	李六亿	李宁忱	李建川
李俊霞	李晓娟	李海潮	李淳德	李鸿珍	李湘燕	杜 颖	杜军保	杨尹默	杨晓东	杨晓娜	杨铁生
沈 扬	肖卫忠	肖文华	肖文斌	苏 华	苏加林	邱志祥	陆海英	陈 宁	陈 宇	陈 红	陈 舟
陈 剑	陈 静	陈亚红	陈江天	陈红梅	陈国卫	陈俊雅	陈晓波	陈鸿义	陈源源	周 莉	周 棉
周利群	周国鹏	周爱红	和 宇	季 蓉	林蓉燕	欧晋平	郑 波	金 杰	侯 芳	侯凤琴	姚婉贞
姜可伟	施学东	洪 涛	洪天配	祝毓林	贺 蓓	贺茂林	赵 邑	赵 玮	赵 鸿	赵志杰	赵金垣
赵彩芸	赵景涛	赵慧萍	徐 玲	徐小元	徐迎胜	徐京杭	徐国宾	晏晓明	栗占国	袁 姗	袁戈恒
贾 园	郭力劭	郭丹杰	高 枫	高 炜	高 磊	高占成	高洪伟	崔 洪	崔金琰	曹 静	曹兆龙
梁 斌	章 巍	傅 瑜	傅希贤	塔 娜	彭 靖	彭吉润	温 韬	程永静	童 玉	董玉君	董宇红
董爱梅	蒋 绚	蒋 捷	蒋宝琦	谢 超	谢群慧	韩 芳	鲁 明	窦 侠	阙呈立	雷天光	廖秦平
蔡 翔	蔺小红	樊东升	霍 娜	魏 来							

索引作者(以姓氏笔画为序)

于世鹏	王 敏	王养岭	孔令斌	甘立军	冯勋刚	刘大鸣	仲伟法	孙 琳	孙思珍	孙锡超	李 霞
李红梅	李慎廉	张士奇	张再伟	张金国	张树鹏	陈东风	武广华	郭 静	赵元明	柳雅玲	徐芳芳
高东升	高东田	谢钦亮	谭兴友								

人 民 卫 生 出 版 社

# 哈里森内科学

第 15 版

下 卷

主 编 EUGENE BRAUNWALD ANTHONY S. FAUCI  
DENNIS L. KASPER STEPHEN L. HAUSER  
DAN L. LONGO J. LARRY JAMESON

主 译 王德炳

秘 书 刘玉村

译 者(以姓氏笔画为序)

丁 颖	丁文惠	丁颖果	万 华	于 丽	于仲元	于岩岩	马 靖	马明信	尹 彪	尹慕军	王 军
王 华	王 进	王 艳	王力平	王广发	王东民	王全桂	王宏利	王国英	王建丽	王秋生	王贵强
王海宁	王艳荣	王雪梅	王朝霞	王勤环	王鹏远	王蔚虹	王燕斌	车文玺	邓 敏	邓小梅	邓正照
邓咏梅	田成华	白 羽	白 静	乔岐禄	任自文	任静怡	关 欣	刘 娜	刘 洪	刘 健	刘小璇
刘占兵	刘正新	刘玉村	刘如辉	刘和亮	刘英琳	刘宪义	刘朝辉	刘新民	吕 媛	吕 鹤	孙 葳
孙永昌	孙庆利	孙燕淑	庄 岩	朱元民	朱桂霞	朴海燕	许 幸	许蔚林	闫 辉	齐丽彤	何 菁
何权瀛	何志嵩	何晋德	余 兵	余 进	吴 成	吴 迪	吴 南	吴 彦	吴 涛	吴 淳	吴士良
吴文湘	吴红花	吴赤红	宋卫东	宋红松	寿艳红	岑溪南	张 冲	张 红	张 岩	张 俊	张 晖
张 莉	张 燕	张 巍	张 鑫	张华纲	张远锦	张建中	张俊清	张彦芳	张晓春	张新宇	张黎明
李 坚	李 俊	李 荔	李 颂	李 辉	李 楠	李 澍	李大柱	李小刚	李六亿	李宁忱	李建川
李俊霞	李晓娟	李海潮	李淳德	李鸿珍	李湘燕	杜 颖	杜军保	杨尹默	杨晓东	杨晓娜	杨铁生
沈 扬	肖卫忠	肖文华	肖文斌	苏 华	苏加林	邱志祥	陆海英	陈 宁	陈 宇	陈 红	陈 舟
陈 剑	陈 静	陈亚红	陈江天	陈红梅	陈国卫	陈俊雅	陈晓波	陈鸿义	陈源源	周 莉	周 棉
周利群	周国鹏	周爱红	和 宇	季 蓉	林蓉燕	欧晋平	郑 波	金 杰	侯 芳	侯凤琴	姚婉贞
姜可伟	施学东	洪 涛	洪天配	祝毓林	贺 蓓	贺茂林	赵 邑	赵 玮	赵 鸿	赵志杰	赵金垣
赵彩芸	赵景涛	赵慧萍	徐 玲	徐小元	徐迎胜	徐京杭	徐国宾	晏晓明	栗占国	袁 姗	袁戈恒
贾 园	郭力劭	郭丹杰	高 枫	高 炜	高 磊	高占成	高洪伟	崔 洪	崔金琰	曹 静	曹兆龙
梁 斌	章 巍	傅 瑜	傅希贤	塔 娜	彭 靖	彭吉润	温 韬	程永静	董 玉	董玉君	董宇红
董爱梅	蒋 绚	蒋 捷	蒋宝琦	谢 超	谢群慧	韩 芳	鲁 明	窦 侠	阙呈立	雷天光	廖秦平
蔡 翔	蔺小红	樊东升	霍 娜	魏 来							

索引作者(以姓氏笔画为序)

于世鹏	王 敏	王养岭	孔令斌	甘立军	冯勋刚	刘大鸣	仲伟法	孙 琳	孙思珍	孙锡超	李 霞
李红梅	李慎廉	张士奇	张再伟	张金国	张树鹏	陈东风	武广华	郭 静	赵元明	柳雅玲	徐芳芳
高东升	高东田	谢钦亮	谭兴友								

人 民 卫 生 出 版 社

# 序

《哈里森内科学》(《Harrison's Principles of Internal Medicine》)是一部世界上高水平的经典教科书。自 20 世纪 50 年代问世以来,每 4 年更新再版;由于该书的权威性以及对培养医师的重大作用,先后被译成法文、德文、西班牙文、日文、中文等多种文字。1991 年的第 12 版由同济医科大学的专家教授译成中文并在中国出版、发行,该书中文版在我国医学界反响很大,受到广泛认可和欢迎。

2001 年的第 15 版是新世纪的第一版,以 Eugene Braunwald, MD 等当代内科学权威为首,组成了强大的编审委员会,对第 14 版进行了重大修改,并增补了很多新的内容,对当今医学和疾病有重大影响的分子生物学、细胞遗传学、细胞生物学和免疫学等医学基础知识进行了补充,阐明了基础与临床的有机联系及疾病发生的机理。同时,对于疾病的分类(如白血病新的 WHO 的分类标准)、预防、诊断和治疗等方面的最新进展也做了详尽介绍。

临床医学是一门综合性学科,不仅仅具有丰富的生物学和医学基础知识,而且与人文社会科学密切相关;同时它也是实践性很强的学科。临床医师的服务

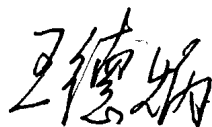
对象是人,他(她)们必须具备广博而深厚的知识、精湛的技术、较强的实践能力和客观敏锐的思维,同时也必须有高尚的医德、医风及正确的价值观。第 15 版《哈里森内科学》在医学概论中特别强调了医患关系、伦理学、正确决策、循证医学、临床医学与经济问题、妇女、青少年健康、老年医学、预防医学等重要内容;这对提高临床医师全面素质具有重大意义。

科学是无边界的,临床医学更是如此。人民卫生出版社引进世界上先进的、高水平的《哈里森内科学》作为我国的临床医学教科书,约请北京大学医学部的教授、专家翻译了《Harrison's Principles of Internal Medicine》第 15 版,实属名智之举。

在人民卫生出版社的大力协助下,我们组织北京大学医学部的教授、专家多次开会,统一标准,力求翻译忠实原著,保证质量。对这个具有 700 万字的巨著,我们仅用了一年多的时间,体现了译者的艰辛;初译之后,又经过多次校正,总体翻译水平较高,文笔也较流畅。真诚希望这本优秀内科学教科书中文版对广大临床医师有所帮助。但毕竟由于时间比较紧迫,不当之处,还望同仁们提出批评指正!

北京大学医学部

主译



2003 年 3 月于北京

# 题 献

刘玉村 译



KURT J. ISSELBACHER

在这一次出版中，我们要感谢同道 Kurt J. Isselbacher。在《哈里森内科学》第 6—14 版九次重版中，他参与了编著，包括第 6 版至第 13 版的主编。在过去三十余年中，《哈里森内科学》保持着内科医学的艺术性和言简意赅的特点，Isselbacher 医生在其中起了重要作用。他对于《哈里森内科学》功不可没，在第 15 版以及将来我们会谨记这一点。

Isselbacher 医生毕业于哈佛大学医学院。后在麻省总医院 (MGH) 接受住院医师培训，在国立卫生学院做研究学者。年仅 31 岁就被选举领导麻省总医院胃肠科，其后的 30 年中他担任该科主任，带领同事们进行研究，提高了对胃肠疾病临床特点和基础理论两方面的认识。由于他的领导才能，麻省总医院胃肠科现在已名声大振，一方面是它的胃肠病医师训练项目，另一方面同时它还是世界上胃肠疾病临床、基础研究最先进的中心之一。1987 年，Isselbacher 医生接受了一项新的挑战，凭借着独特的眼光和领导才能，他担任麻省总医院癌症中心的主任。在一段相对较短的时间内，麻省总医院癌症中心一跃成为一个顶级的癌症研究中心。为此，Isselbacher 医生获得哈佛医学院 Mallinckrodt 杰出教授奖。从他毕业起，他就是该学院优秀

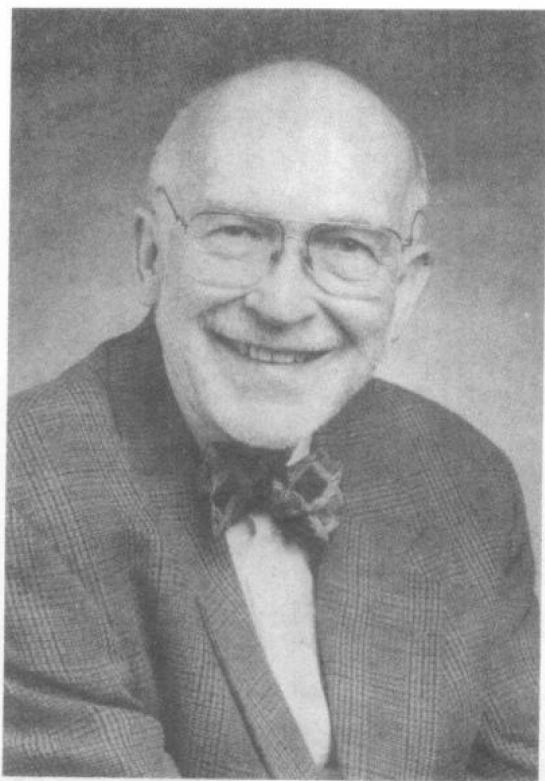
学生奖学金评委中举足轻重的一员。在将近 30 年里，他担任哈佛医学系执行委员会的主席，在该系的成长和取得优秀成果中起重要作用。

在 Isselbacher 医生身上结合了出色科学家、优秀临床医生以及教师的特质。他培养了几代医生和学者，包括许多当今医学研究中的领军人物。他曾在许多著名学术杂志上发表文章 400 多篇，他的研究成果包括吸收障碍性疾病中酶缺乏的界定，描述胃肠道疾病时吸收过程、吸收不良、肝脏蛋白质合成的生化机理。Kurt Isselbacher 曾获得多项殊荣，包括特殊成就奖、美国胃肠学会 Friedenwald 奖章，因为在临床医学中的卓越贡献，美国医师学院颁发其 John Phillips 纪念奖，以及美国医师协会 Kober 奖章。他是美国国家科学院及其医学委员会成员、美国胃肠病学会主席、美国肝病研究会成员、美国医师协会会员。

Kurt Isselbacher 为我们展示了医学的最高境界。作为一名严谨的医生，他对工作非常投入，在诊治病人过程中始终将热情与缜密的分析紧密结合。除了作为临床医生、科学家和编辑所做的贡献，他还提高了医务人员对胃肠疾病和肿瘤病人的治疗水平，同时培养了一代又一代医生。



## 题 献



JEAN DONALD WILSON

Jean Wilson 在 1978—1998 年间担任《哈里森内科学》第 9—14 版的编者；在第 12 版担任主编。Jean Wilson 是得克萨斯州人，曾就读于奥斯汀的德州大学及达拉斯的德州大学西南医学院。他在 Parkland 医院内科接受住院医师培训，并在内分泌-代谢科做访问学者。除了有两年时间在国立卫生研究所做内部项目生化研究外，Wilson 医生整个职业生涯都在德州大学西南医学院度过，如今他在那里的生物医学科学部任 Charles Cameron Sprague 荣誉主席。

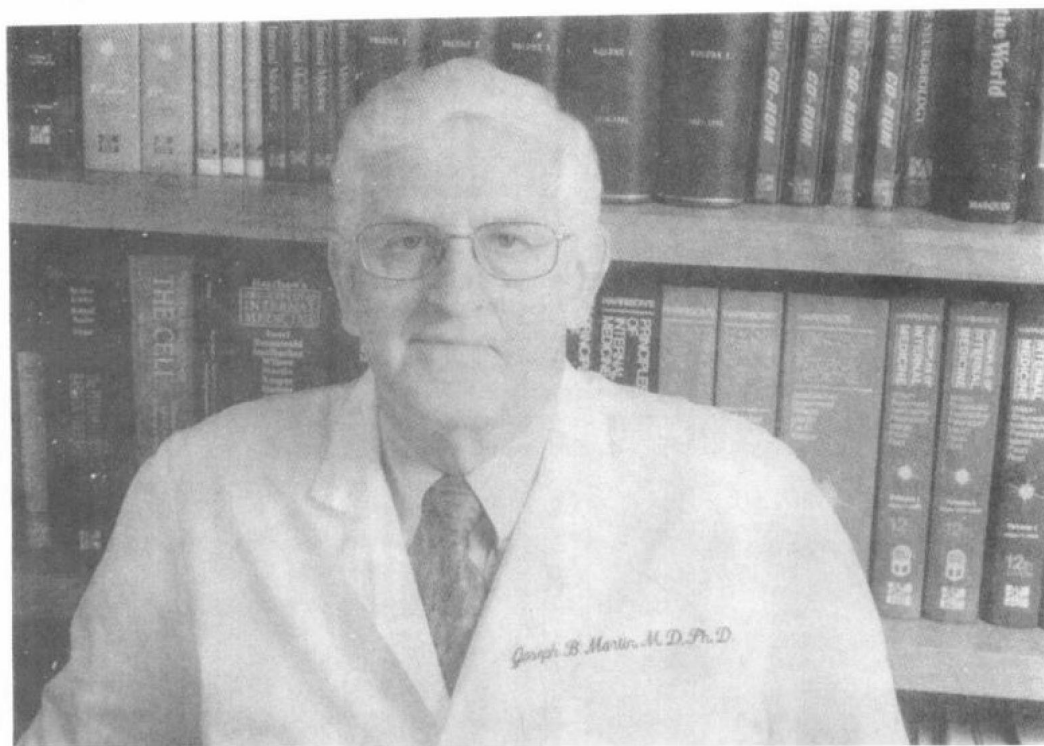
Wilson 医生是全美最著名的生物医学科学家之一，他负责研究出了雄激素从胚胎到正常成人、患病成人过程中的作用机理和生理功能。他的诸多重要发现之一是 5 $\alpha$ -还原反应，男性的靶组织通过它把睾酮转化为活性更强的雄激素和双氢睾酮。由于他的研究，他获得很多殊荣，其中有内分泌学会颁发的 Ernst Oppenheimer 纪念奖、美国艺术和科学院的 Amory 奖、Lita Annenberg Hazen 杰出临床研究奖、内分泌学会 Henry Dale 奖章、Worcester 实验生物学基金会的 Gregory Pincus 奖、内分泌学会的 Fred Conrad Koch 奖和美国医师协会的 Kober 奖章。

他是国家科学院、国家科学院医学所、美国艺术和科学院成员，皇家医师学院的特别成员，担任美国临床调查协会、美国医师协会和内分泌学会主席。在过去的 20 年里，Wilson 医生在西南学院指导的医学博士/哲学博士培养计划取得极大成功，在 8 年时间里担任受人尊敬的内分泌-代谢科的领导。

也许对 Jean Wilson 最好的形容是一个完全意义上的内科教授。他始终都是一个优秀的教师和模范的临床医师，同时还不懈地坚持着纯粹的研究工作。这位德高望重的内科学家常年在 Parkland 纪念医院(他的教学医院)的糖尿病足护理诊所为达拉斯的穷苦病人清理脚上的老茧和溃疡，这样的画面可能是对他最好的写照。

Wilson 医生兴趣广泛，是个真正的知识分子。他的优秀天赋和爱好之一就是医学编辑。他是《*Journal of Clinical Investigation*》和《*Williams Textbook of Endocrinology*》的主编。在担任《哈里森内科学》编者的 20 年里，Wilson 医生充分展示了他作为一个临床医师、教师和科学家的卓越能力。他严谨细致的学识、高标准的要求，不仅对于主要由他负责的内分泌代谢学和遗传学部分，而且对于全书都有重大影响。

## 题 献



JOSEPH B. MARTIN

编者希望感谢《哈里森内科学》第 10—14 版神经病学部分的编者 Joseph B. Martin 所做出的巨大贡献。Martin 医生是继 Raymond D. Adams 医生之后神经病学部分的编者。回顾历史，当初选择 Joseph Martin 取代 Adams 是有先见之明的。这是因为预见到了在 20 世纪 80 年代到 90 年代间，神经科学由一门主要依靠描述的学科转变为内科学中最有活力和发展最快的一个领域。他被任命为编者后，保证了这本教科书的分子神经病学这一崭新领域在同类教材中处于最先进的领导地位。从第 10 版起，Martin 开始在由 Adams 创造的“综合征法”（syndromic approach）的基础上建立起强有力的教学结构，并强调分子遗传学和细胞生物学的进展，这两门学科对神经疾病做了重新分类，阐明了疾病机理，并为临床诊断治疗提供了新的观念。他担任编委期间，《哈里森内科学》的神经病学部分成为了同类教材中最优秀的章节，因为其展示了神经病学的最新发现，同时也为这本教科书的总体成功做出了贡献。

Martin 医生出生于加拿大 Alberta 的 Bassano，在埃德蒙顿的 Alberta 大学接受医学预科和医学教育，在 Case Western 大学接受神经内科训练，在 Rochester 大学获得哲学博士学位。他的医学研究生涯在 1971 年开始于蒙特利尔的 McGill 大学，在那里他建立了一个独立实验室，专注于下丘脑对垂体激素分泌调节作用的研究，很快升职成为神经科和神经外科的主任。1978 年，

他以 Bullard（后来的 Julianne Dorn）教授的身份加入了哈佛医学院神经病学系，并担任麻省总医院神经病学服务中心主任。在哈佛期间，他建立了 Huntington 病中心——“Without Walls”，这个中心在 1983 年报告了举世瞩目的与 Huntington 病连锁的遗传标记，从此宣告当代分子神经病学时代的到来。1989 年 Martin 医生加入洛杉矶的加州大学，开始担任医学院主任，后来成为校长。他在洛杉矶加州大学的众多成就之一是提出在洛杉矶建立新的科研校园的构想，并很快成为了现实。1997 年 7 月，他回到哈佛，担任神经病学系和临床神经科学系的 Caroline Shields Walker 教授和医学系主任。作为一个出色的教师和医生，Martin 鼓舞了哈佛和洛杉矶加州大学的一代职员、学生和同事。

Martin 医生获得过很多荣誉，包括五所著名大学的荣誉学位和美国医学院的 Abraham Flexner 奖。他担任或曾经担任十九种医学和神经病学杂志的编委。他是国家科学院医学所的成员、美国神经病学学会的主席。

Martin 医生为本书做出了许多贡献，加上他有杰出的组织能力，清晰而直率的写作、编辑风格，把复杂的概念提炼为易于广大医学读者理解的文字。例如，他编写的关于神经遗传学的章节总是立即成为本书每一次新版时的经典杰作和闪光点。本书编者们都非常珍视与这位杰出人物的友谊，他的正直和智慧力量在过去的 20 年里为《哈里森内科学》一书增色不少。

# 作者名录

括号里数字为该作者所编写或合编写的文章的章号。

## **ELIAS ABRUTYN, MD**

Professor of Medicine and Public Health; Associate Provost and Associate Dean for Faculty Affairs, Department of Medicine, Division of Infectious Diseases, MCP Hahnemann University School of Medicine, Philadelphia [143, 144]

## **JOHN W. ADAMSON, MD**

Director, Blood Research Institute, Blood Center of Southeastern Wisconsin, Milwaukee [61, 105]

## **DAVID A. AHLQUIST, MD**

Professor of Medicine, Mayo Medical School; Consultant in Gastroenterology, Mayo Clinic and Foundation, Rochester [42]

## **LEENA ALA-KOKKO, MD**

Collagen Research Unit, Biocenter Oulu and Department of Medical Biochemistry, University of Oulu, Finland [351]

## **MUHAMMAD T. AL-LOZI, MBBS**

Assistant Professor of Neurology, Washington University, St. Louis [101]

## **MICHAEL J. AMINOFF, MD**

Professor of Neurology, University of California San Francisco, San Francisco [22, 357, 363]

## **KENNETH C. ANDERSON, MD**

Associate Professor of Medicine, Harvard Medical School; Medical Director, Blood Component Laboratory, Dana-Farber Cancer Institute, Boston [114]

## **ELLIOTT M. ANTMAN, MD**

Associate Professor of Medicine, Harvard Medical School; Director, Samuel A. Levine Cardiac Unit, Brigham and Women's Hospital, Boston [243]

## **FREDERICK R. APPELBAUM, MD**

Member and Director, Clinical Research Division Fred Hutchinson Cancer Research Center; Professor and Head, Division of Medical Oncology, University of Washington School of Medicine, Seattle [115]

## **GORDON L. ARCHER, MD**

Chairman, Division of Infectious Diseases, Department of Internal Medicine; Professor of Medicine and Microbiology/Immunology, Medical College of Virginia, Campus of Virginia Commonwealth University, Richmond [137]

## **JAMES O. ARMITAGE, MD**

Dean, College of Medicine, and Professor of Internal Medicine, Section of Oncology/Hematology, University of Nebraska, Omaha [112]

## **ARTHUR K. ASBURY, MD**

Van Meter Professor of Neurology Emeritus, University of Pennsylvania School of Medicine, Philadelphia [23, 377, 378]

## **JOHN R. ASPLIN, MD**

Assistant Professor of Medicine, Section of Nephrology, University of Chicago, Pritzker School of Medicine, Chicago [276, 279]

## **JOHN C. ATHERTON, MRCP**

Lecturer, Department of Medicine, Division of Gastroenterology and Institute of Infections and Immunity, University of Nottingham, Nottingham, England [154]

## **PAUL S. AUERBACH, MD**

Clinical Professor of Surgery, Division of Emergency Medicine, Stanford University School of Medicine, Los Altos [397]

## **K. FRANK AUSTEN, MD**

Theodore Bevier Bayles Professor of Medicine, Harvard Medical School; Director, Inflammation and Allergic Diseases Research Section, Division of Rheumatology, Immunology and Allergy, Brigham and Women's Hospital, Boston [310]

## **BERNARD M. BABIOR, MD, PhD**

Head, Division of Biochemistry, Department of Molecular and Experimental Medicine, The Scripps Research Institute; Professor and Staff Physician, Division of Hematology and Oncology, Department of Medicine, Scripps Clinic and Research Foundation, La Jolla [107]

## **KAMAL F. BADR, MD**

Professor and Chair, Department of Internal Medicine, American University of Beirut (Lebanon); Attending Physician, American University of Beirut Medical Center, Beirut, Lebanon [278]

## **DONALD S. BAIM, MD**

Professor of Medicine, Harvard Medical School; Director, Center for Minimally Invasive Therapy, Brigham and Women's Hospital, Boston [228, 245]

## **ROBERT L. BARBIERI, MD**

Kate Macy Ladd Professor Obstetrics, Gynecology and Reproductive Biology, Harvard Medical School; Chairman, Department of Obstetrics and Gynecology, Brigham and Women's Hospital, Boston [7]

## **TAMAR F. BARLAM, MD**

Assistant Professor of Medicine, Harvard Medical School; Senior Associate Physician, Beth Israel Deaconess Medical Center, Boston; Director, Project on Antibiotic Resistance, Center for Science in the Public Interest, Washington, D.C. [19, 150]

## **KENNETH J. BART, MD, MPH, MSHPM**

Director, Graduate School of Public Health, San Diego State University, San Diego [122]

## **M. FLINT BEAL, MD**

Anne Parrish Titze Professor and Chairman of Neurology, Weill Medical College; Neurologist-in-Chief, New York Presbyterian Hospital, New York [367, 376]

## **ROBERT S. BENJAMIN, MD**

Internist and Professor of Medicine, Chairman, Department of Melanoma/Sarcoma Medical Oncology; Medical Director, Multidisciplinary Sarcoma Center, The University of Texas M.D. Anderson Cancer Center, Houston [98]

## **JOHN E. BENNETT, MD**

Head, Clinical Mycology Section, Laboratory of Clinical Investigation, National Institute of Allergy and Infectious Diseases, National Institutes of Health, Potomac [200, 201, 202, 203, 204, 205, 206, 207, 208]

## **EDWARD J. BENZ, JR., MD**

Richard and Susan Smith Professor of Medicine, Professor of Pediatrics and Pathology, Harvard Medical School; President, Dana-Farber Cancer Institute, Boston [106]

## **PAUL D. BERK, MD**

Department of Medicine, Division of Liver Disease, Mount Sinai School of Medicine, New York [294]

## **DAVID R. BICKERS, MD**

Carl Truman Nelson Professor and Chairman, Department of Dermatology, Columbia University, New York [60]

## **HENRY J. BINDER, MD**

Professor of Medicine, Section of Digestive Diseases, Yale University, New Haven [286]

## **THOMAS D. BIRD, MD**

Professor of Neurology, University of Washington; Chief of Neurology, Veterans Affairs Medical Center, Seattle [26, 362, 379]

## **NEIL R. BLACKLOW, MD**

Richard M. Haidack Distinguished Professor of Medicine, Molecular Genetics and Microbiology, University of Massachusetts Medical School, Worcester [187]

## **MARTIN J. BLASER, MD**

Frederick J. King Professor of Internal Medicine, Chairman, Department of Medicine, and Professor of Microbiology, New York University School of Medicine, New York [154, 158]

## **CLARA D. BLOOMFIELD, MD**

Director, The Ohio State University Comprehensive Cancer Center; Deputy Director, The Arthur G. James Cancer Hospital and Richard J. Solove Research Institute; William G. Pace III Endowed Chair in Cancer Research; Director and Professor, Division of Hematology and Oncology, Department of Internal Medicine, College of Medicine and Public Health, The Ohio State University, Columbus [111]

**RICHARD S. BLUMBERG, MD**

Associate Professor of Medicine, Harvard Medical School; Chief, Division of Gastroenterology, Department of Medicine, Brigham and Women's Hospital, Boston [287]

**JEAN L. BOLOGNIA, MD**

Professor of Dermatology, Yale University School of Medicine, New Haven [57]

**GEORGE J. BOSL, MD**

Chairman, Department of Medicine, Memorial Sloan-Kettering Cancer Center; Professor of Medicine, Cornell University Medical College, New York [96]

**PATRICK BOSQUE, MD**

Assistant Professor of Neurology, Institute for Neurodegenerative Diseases, University of California San Francisco, San Francisco [375]

**RICHARD C. BOUCHER, MD**

William Rand Kenan Professor of Medicine, University of North Carolina at Chapel Hill; Director, Cystic Fibrosis/Pulmonary Research & Treatment Center, Chapel Hill [257]

**KAREN D. BRADSHAW, MD**

Associate Professor of Obstetrics and Gynecology, The University of Texas Southwestern Medical Center, Dallas [52, 336]

**HUGH R. BRADY, MD, PhD**

Professor of Medicine and Therapeutics, University College Dublin; Mater Misericordiae Hospital, Dublin, Ireland [269, 273, 274, 275]

**KENNETH D. BRANDT, MD**

Professor of Medicine and Head, Rheumatology Division, Indiana University School of Medicine; Director, Indiana University Multipurpose Arthritis and Musculoskeletal Disease Center, Indianapolis [321]

**EUGENE BRAUNWALD, MD, MD(Hon), ScD(Hon)**

Distinguished Hersey Professor of Medicine; Faculty Dean for Academic Programs at Brigham and Women's Hospital and Massachusetts General Hospital, Harvard Medical School; Vice-President for Academic Programs, Partners HealthCare System, Boston [32, 33, 34, 36, 37, 224, 225, 231, 232, 236, 237, 238, 239, 243, 244]

**IRWIN M. BRAVERMAN, MD**

Professor of Dermatology, Yale University School of Medicine, New Haven [57]

**OTIS W. BRAWLEY, MD**

Assistant Director, Office of Special Populations Research, Office of the Director, National Cancer Institute, National Institutes of Health, Bethesda [80]

**JOEL G. BREMAN, MD, DTPH**

Deputy Director, Division of International Training and Research, Fogarty International Center, National Institutes of Health, Bethesda [214]

**BARRY M. BRENNER, MD, DSc(Hon), DMSc(Hon)**

Samuel A. Levine Professor of Medicine, Harvard Medical School; Director, Renal Division, Brigham and Women's Hospital, Boston [47, 49, 268, 269, 270, 271, 273, 274, 275, 277, 278, 281]

**ROBERT M. BRENNER, MD**

Associate Medical Director, Clinical Research, Amgen Inc., Thousand Oaks, California [268]

**CHARLES G. D. BROOK, MA, MD**

Emeritus Professor of Pediatric Endocrinology, University College London, London, UK [8]

**CLAIRE V. BROOME, MD**

Senior Advisor to the Director, Integrated Health Information Systems, Centers for Disease Control and Prevention, Atlanta [142]

**ROBERT H. BROWN, JR., DPhil, MD**

Associate Neurologist, Massachusetts General Hospital; Professor of Neurology, Harvard Medical School, Boston [365, 383]

**ROBERT C. BRUNHAM, MD**

Professor of Medicine; Director and Medical Director, University of British Columbia Centre for Disease Control, Vancouver, BC, Canada [133]

**H. FRANKLIN BUNN, MD**

Professor of Medicine, Harvard Medical School; Physician, Brigham and Women's Hospital, Boston [107, 108]

**DAVID M. BURNS, MD**

Professor of Medicine, University of California San Diego, San Diego [390]

**MICHAEL J. BURNS, MD**

Instructor of Medicine, Harvard Medical School; Department of Emergency Medicine, Division of Toxicology, Beth Israel Deaconess Medical Center, Boston [396]

**JOAN R. BUTTERTON, MD**

Assistant Professor of Medicine, Harvard Medical School; Assistant in Medicine, Infectious Disease Division, Massachusetts General Hospital, Boston [131]

**JOHN C. BYRD, MD**

Director of Clinical Research, Hematology-Oncology Service, Department of Medicine, Walter Reed Army Medical Center, Washington, D.C. [111]

**STEPHEN B. CALDERWOOD, MD**

Chief, Division of Infectious Diseases, Massachusetts General Hospital; Associate Professor of Medicine (Microbiology and Molecular Genetics), Harvard Medical School, Boston [131]

**MICHAEL CAMILLERI, MD**

Professor of Medicine and Physiology, Mayo Medical School; Consultant in Gastroenterology, Physiology and Biophysics, Mayo Clinic and Mayo Foundation, Rochester [42]

**GRANT L. CAMPBELL, MD, PhD**

Division of Vector-Borne Infectious Diseases, National Center for Infectious Diseases, Centers for Disease Control and Prevention, Fort Collins [162, 175]

**MARK D. CARLSON, MD**

Vice Chair, Department of Medicine, University Hospitals of Cleveland; Associate Professor of Medicine, Case Western Reserve University School of Medicine, Cleveland [21]

**CHARLES B. CARPENTER, MD**

Professor of Medicine, Harvard Medical School; Senior Physician, Brigham and Women's Hospital, Boston [272]

**BRUCE R. CARR, MD**

Professor and Director, Division of Reproductive Endocrinology, and Holder, Paul C. MacDonald Distinguished Chair in Obstetrics and Gynecology, The University of Texas Southwestern Medical Center, Dallas [52, 336]

**AGUSTIN CASTELLANOS, MD**

Professor of Medicine and Director, Clinical Electrophysiology, University of Miami School of Medicine, Miami [39]

**PHILLIP F. CHANCE, MD**

Professor of Pediatrics and Neurology, University of Washington School of Medicine; Chief, Division of Genetics and Development, Children's Hospital and Regional Medical Center, Seattle [379]

**FENG-YEE CHANG, MD, DSc**

Associate Professor of Medicine, National Defense Medical Center; Chief, Division of Infectious Diseases, Tri-Service General Hospital, Taipei, Taiwan [151]

**YUAN-TSONG CHEN, MD, PhD**

Professor of Pediatrics and Genetics, and Chief, Division of Medical Genetics, Duke University Medical Center, Durham [350]

**JOHN S. CHILD, MD**

Professor of Medicine, University of California, Los Angeles; Co-Chief, Cardiology and Co-Director, Ahmanson/UCLA Adult Congenital Heart Disease Center, UCLA Medical Center, Los Angeles [234]

**OLIVIER M. CHOSIDOW, MD**

Department of Internal Medicine, Pitie-Salpêtrière Hospital, Paris, France [59]

**RAYMOND T. CHUNG, MD**

Medical Director, Liver Transplant Program; Director, Liver Service, Gastrointestinal Unit, Massachusetts General Hospital; Assistant Professor of Medicine, Harvard Medical School, Boston [299]

**FREDRIC L. COE, MD**

Professor of Medicine and Physiology and Director, Clinical Research Training Program, University of Chicago Pritzker School of Medicine, Chicago [276, 279]

**ALAN S. COHEN, MD**

Distinguished Professor of Medicine in Rheumatology, Emeritus, and Conrad Wesselhoft Professor of Medicine, Emeritus, Boston University School of Medicine; Chief of Medicine and Director, Emeritus, Thorndike Memorial Laboratory, Boston City Hospital, Boston [319]

**JEFFREY I. COHEN, MD**

Head, Medical Virology Section, Laboratory of Clinical Investigation, National Institute of Allergy and Infectious Diseases, National Institutes of Health, Bethesda [184, 193]

**FRANCIS S. COLLINS, MD, PhD**

Director, National Human Genome Research Institute, National Institutes of Health, Bethesda [81]

**WILSON S. COLUCCI, MD**

Professor of Medicine, and Chief, Cardiovascular Medicine, Boston University School of Medicine, Boston [240]

**GERALD A. COLVIN, DO**

Assistant Professor of Medicine and Medical Research Scientist, University of Massachusetts Memorial Medical Center, Worcester [104]

**MAUREEN T. CONNELLY, MD, MPH**

Instructor in Medicine, Harvard Medical School; Harvard Pilgrim Health Care, Boston [10]

**MAX D. COOPER, MD**

Professor of Medicine, Pediatrics and Howard Hughes Medical Institute Investigator, University of Alabama at Birmingham, Birmingham [308]

**LAWRENCE COREY, MD**

Professor, Medicine and Laboratory Medicine, and Head, Virology Division, University of Washington; Head, Program in Infectious Diseases, Fred Hutchinson Cancer Research Center, Seattle [182, 197]

**FELICIA COSMAN, MD**

Associate Professor of Clinical Medicine, Columbia University; Medical Director, Clinical Research Center, Helen Hayes Hospital, West Haverstraw [342]

**MARK A. CREAGER, MD**

Associate Professor of Medicine, Harvard Medical School; Director, Vascular Center, Brigham and Women's Hospital, Boston [247, 248]

**PHILIP E. CRYER, MD**

Irene E. and Michael M. Karl Professor of Endocrinology and Metabolism, and Director, Division of Endocrinology, Diabetes and Metabolism, Washington University School of Medicine, St. Louis [334]

**RONALD G. CRYSTAL, MD**

Bruce Webster Professor of Medicine, Director, Institute of Geriatric Medicine, and Director, The Arthur and Rochelle Belfer Gene Therapy Care Facility, Weill Medical College of Cornell University, New York [318]

**JOHN J. CUSH, MD**

Medical Director, Arthritis Center, Presbyterian Hospital of Dallas, Dallas [320]

**CHARLES A. CZEISLER, MD, PhD**

Professor of Medicine, Harvard Medical School; Director, Sleep Disorders and Circadian Medicine, Brigham and Women's Hospital, Boston [27]

**MARINOS C. DALAKAS, JR., MD**

Chief, Neuromuscular Diseases Section, National Institute of Neurological Disorders and Stroke, National Institutes of Health, Bethesda [382]

**DANIEL F. DANZL, MD**

Professor and Chair, Department of Emergency Medicine, University of Louisville School of Medicine, Floyd Knobs, IN [20]

**ROBERT B. DAROFF, MD**

Chief of Staff and Senior Vice President for Academic Affairs, University Hospitals of Cleveland; Professor of Neurology and Associate Dean, Case Western Reserve University School of Medicine, Cleveland [21]

**MEHUL T. DATTANI, MD**

Senior Lecturer/Honorary Consultant in Pediatric Endocrinology, Institute of Child Health and Great Ormond Street Children's Hospital, London, UK [8]

**CHARLES E. DAVIS, MD**

Professor of Pathology and Medicine, University of California—San Diego School of Medicine; Director Emeritus, Microbiology Laboratory, UCSD Medical Center, San Diego [211]

**JOHN DEL VALLE, MD**

Professor of Medicine, Division of Gastroenterology, Department of Medicine, University of Michigan School of Medicine, Ann Arbor [285]

**BRADLEY M. DENKER, MD**

Assistant Professor of Medicine, Harvard Medical School; Associate Physician, Brigham and Women's Hospital, Boston [47]

**DAVID T. DENNIS, MD, MPH**

Chief, Bacterial Zoonoses Branch, Centers for Disease Control and Prevention, Fort Collins [162, 175]

**ROBERT L. DERESIEWICZ, MD**

Assistant Professor of Medicine, Harvard Medical School, Boston [139, 159]

**ROBERT J. DESNICK, PhD, MD**

Professor and Chairman, Department of Human Genetics, Mount Sinai School of Medicine, New York [346]

**BETTY DIAMOND, MD**

Chief, Division of Rheumatology, Department of Microbiology and Immunology, Albert Einstein College of Medicine, New York [307]

**JULES L. DIENSTAG, MD**

Associate Professor of Medicine, Harvard Medical School; Physician, Massachusetts General Hospital, Boston [91, 295, 296, 297, 301]

**WILLIAM P. DILLON, MD**

Professor of Radiology, Neurology and Neurosurgery; Chief, Diagnostic Neuroradiology, University of California San Francisco, San Francisco [358]

**CHARLES A. DINARELLO, MD**

Professor of Medicine, University of Colorado Health Sciences Center, Denver [17]

**ROBERT G. DLUHY, MD**

Professor of Medicine, Harvard Medical School, Brigham and Women's Hospital, Boston [331]

**RAPHAEL DOLIN, MD**

Maxwell Finland Professor of Medicine, and Dean for Clinical Programs, Harvard Medical School, Boston [181, 189, 190]

**DANIEL B. DRACHMAN, MD**

Professor of Neurology and Neurosciences; Director, Neuromuscular Unit, The Johns Hopkins University School of Medicine, Baltimore [380]

**JEFFREY M. DRAZEN, MD**

Professor of Medicine, Harvard Medical School; Senior Physician, Brigham and Women's Hospital, Boston [249, 250, 251, 266]

**THOMAS D. DUBOSE, JR., MD**

Peter T. Bohan Professor and Chairman, Department of Internal Medicine; Professor of Molecular and Integrative Physiology, University of Kansas School of Medicine, Kansas City [50]

**J. STEPHEN DUMLER, MD**

Associate Professor and Associate Director, Division of Medical Microbiology, Department of Pathology, The Johns Hopkins Medical Institutions, Baltimore [177]

**ANDREA E. DUNAIF, MD**

Associate Professor of Medicine, Director, Center of Excellence in Women's Health, Harvard Medical School; Chief, Division of Women's Health and Senior Physician, Brigham and Women's Hospital, Boston [6]

**MARLENE DURAND, MD**

Assistant Professor of Medicine, Harvard Medical School, Boston [30]

**JANICE DUTCHER, MD**

Professor of Medicine, New York Medical College; Associate Director for Clinical Affairs, Our Lady of Mercy Comprehensive Cancer Center, New York [102]

- JOHANNA DWYER, MD**  
Professor of Medicine and Community Health, Tufts University School of Medicine; Professor, Tufts University School of Nutrition Science and Policy; Senior Scientist, Jean Mayer USDA Human Nutrition Research Center at Tufts University, Boston [73]
- VICTOR J. DZAU, MD**  
Hersey Professor of the Theory and Practice of Physic (Medicine), Harvard Medical School; Chairman, Department of Medicine, and Director of Research, Brigham and Women's Hospital, Boston [247, 248]
- JEFFERY S. DZIECZKOWSKI, MD**  
Assistant Professor, Departments of Pathology and Internal Medicine, Wayne State University School of Medicine, Detroit [114]
- J. DONALD EASTON, MD**  
Professor and Chair, Department of Clinical Neurosciences, Brown University School of Medicine; Neurologist-in-Chief, Rhode Island Hospital, Providence [361]
- DAVID A. EHRMANN, MD**  
Associate Professor, Section of Endocrinology, Department of Medicine, University of Chicago, Chicago [53]
- JOHN W. ENGSTROM, MD**  
Associate Professor of Neurology, and Vice Chairman, Department of Neurology, University of California San Francisco, San Francisco [16, 366]
- ALAN EPSTEIN, MD**  
Assistant Professor of Medicine, Brown University School of Medicine, Providence [289]
- ANTHONY S. FAUCI, MD**  
Chief, Laboratory of Immunoregulation; Director, National Institute of Allergy and Infectious Diseases, National Institutes of Health, Bethesda [191, 305, 309, 317]
- MURRAY J. FAVUS, MD**  
Professor of Medicine, University of Chicago Pritzker School of Medicine; Director, General Clinical Research Center; Director, Bone Program, Chicago [279]
- ROBERT G. FENTON, MD, PhD**  
Associate Professor of Medicine, University of Maryland Greenebaum Cancer Center, Baltimore [82]
- HOWARD L. FIELDS, MD, PhD**  
Professor of Neurology and Physiology, University of California San Francisco, San Francisco [12]
- GREGORY A. FILICE, MD**  
Associate Professor of Medicine, University of Minnesota; Chief, Infectious Disease Section, Veterans Affairs Medical Center, Minneapolis [165]
- ROBERT FINBERG, MD**  
Professor of Medicine, and Chair Department of Medicine, University of Massachusetts Medical School, Worcester [85, 136]
- JOYCE D. FINGEROTH, MD**  
Assistant Professor of Medicine, Harvard Medical School; Physician, Beth Israel Deaconess Medical Center, Boston [136]
- JEFFREY S. FLIER, MD**  
George C. Reisman Professor of Medicine, Harvard Medical School; Vice-Chair for Research, and Chief, Division of Endocrinology, Department of Medicine, Beth Israel Deaconess Medical Center, Boston [77]
- JUDAH FOLKMAN, MD**  
Surgeon-in-Chief, Emeritus, Director, Surgical Research Laboratory, Children's Hospital; Andrus Professor of Pediatric Surgery, Professor of Cell Biology, Department of Surgery, Harvard Medical School, Boston [83]
- SONIA FRIEDMAN, MD**  
Instructor in Medicine, Harvard Medical School; Associate Physician in Medicine, Brigham and Women's Hospital, Boston [287]
- WILLIAM F. FRIEDMAN, MD**  
J.H. Nicholson Professor of Pediatrics (Cardiology); Associate Dean for Academic Affairs, University of California, Los Angeles School of Medicine and UCLA Medical Center, Los Angeles [234]
- ADRIANE FUGH-BERMAN, MD**  
Assistant Clinical Professor, Department of Health Care Sciences, George Washington University School of Medicine, Washington, D.C. [11]
- ROBERT F. GAGEL, MD**  
Chairman, Department of Internal Medicine Specialties, and Chief, Section of Endocrine Neoplasia and Hormonal Disorders, University of Texas M.D. Anderson Cancer Center, Houston [339]
- JOHN I. GALLIN, MD**  
Director, NIH Warren Grant G. Magnuson Clinical Center; NIH Associate Director for Clinical Research; Chief Laboratory of Host Defenses, National Institute of Allergy and Infectious Diseases, National Institutes of Health, Bethesda [64]
- ABHIMANYU GARG, MD**  
Professor, Department of Internal Medicine, Center for Human Nutrition, University of Texas Southwestern Medical Center at Dallas; Director, Diabetes Clinic, Department of Veterans Affairs Medical Center, Dallas [354]
- ROBERT H. GELBER, MD**  
Clinical Professor of Medicine and Dermatology, University of California San Francisco, San Anselmo [170]
- JEFFREY A. GELFAND, MD**  
Visiting Professor of Medicine, Harvard Medical School; Distinguished Professor of Medicine, Tufts University School of Medicine; Attending Physician in Infectious Diseases, Massachusetts General Hospital, Boston [17, 125]
- ANNE A. GERSHON, MD**  
Professor of Pediatrics, and Director of Division of Pediatric Infectious Diseases, Columbia University College of Physicians and Surgeons, New York [194, 195, 196]
- MARC GHANY, MD**  
Medical Staff Fellow, Liver Diseases Section, Digestive Diseases Branch, National Institute of Diabetes and Digestive and Kidney Diseases, National Institutes of Health, Bethesda [292]
- RAYMOND J. GIBBONS, MD**  
Arthur M. and Gladys D. Gray Professor of Medicine, Mayo Medical School, Rochester [227]
- BRUCE C. GILLILAND, MD**  
Professor of Medicine and Laboratory Medicine, University of Washington School of Medicine, Seattle [313, 325, 326]
- HENRY N. GINSBERG, MD**  
Irving Professor of Medicine, Columbia University College of Physicians and Surgeons, New York [344]
- ELI GLATSTEIN, MD**  
Vice-Chairman and Clinical Director, Radiation Oncology, University of Pennsylvania Medical Center, Philadelphia [394]
- ROBERT M. GLICKMAN, MD**  
Professor of Medicine and Dean, New York University School of Medicine, New York [46]
- IRA J. GOLDBERG, MD**  
Professor of Medicine, Division of Preventive Medicine and Nutrition, Columbia University College of Physicians and Surgeons, New York [344]
- ARY L. GOLDBERGER, MD**  
Associate Professor of Medicine, Harvard Medical School; Director, Margret and H.A. Rey Laboratory for Nonlinear Dynamics in Medicine, Beth Israel Deaconess Medical Center, Boston [226]
- SAMUEL Z. GOLDHABER, MD**  
Associate Professor of Medicine, Harvard Medical School; Director, Venous Thromboembolism Research Group; Director, Cardiac Center's Anticoagulation Service, Brigham and Women's Hospital, Boston [261]
- DONALD E. GOODKIN, MD**  
San Rafael, California [371]
- RAJ K. GOYAL, MD**  
Associate Chief of Staff for Research and Development, VA Medical Center; Mallinckrodt Professor of Medicine, Harvard Medical School, West Roxbury [40, 284]

**GREGORY A. GRABOWSKI, MD**

Professor of Pediatrics; Director, Division and Program in Human Genetics, Children's Hospital Research Foundation, Cincinnati [349]

**JACOB GREEN, MD**

Associate Professor of Medicine, Department of Nephrology, Technion Faculty of Medicine, Haifa, Israel [270]

**HARRY B. GREENBERG, MD**

Senior Associate Dean for Research, Professor of Medicine, Microbiology and Immunology, and ACOS for Research VAPAHCS, Stanford University, Stanford [192]

**NORTON J. GREENBERGER, MD**

Professor of Medicine, and Senior Associate Dean for Medical Education, University of Kansas School of Medicine, Kansas City [302, 303, 304]

**JOHN S. GREENSPAN, BDS, PhD**

Professor and Chair, Department of Stomatology and Director, Oral AIDS Center, School of Dentistry; Professor, Department of Pathology, and Director, AIDS Clinical Research Center, School of Medicine, University of California San Francisco, San Francisco [31]

**DARYL R. GRESS, MD**

Associate Professor of Neurology and Neurosurgery; Director, Neurovascular Service, University of California San Francisco, San Francisco [376]

**JAMES E. GRIFFIN, MD**

Diana and Richard C. Strauss Professor in Biomedical Research, and Professor of Internal Medicine, University of Texas Southwestern Medical Center, Dallas [335, 338]

**WILLIAM GROSSMAN, MD**

Myer Friedman Distinguished Professor of Medicine, University of California San Francisco; Chief of Cardiology, University of California San Francisco Medical Center, San Francisco [228]

**RASIM GUCALP, MD**

Associate Professor of Medicine, Department of Oncology, Montefiore Medical Center, Albert Einstein College of Medicine, New York [102]

**BEVRA HANNAHS HAHN, MD**

Professor of Medicine, Chief of Rheumatology, and Vice-Chair, Department of Medicine, University of California, Los Angeles, Los Angeles [311]

**STEPHEN M. HAHN, MD**

Assistant Professor of Medicine, Department of Radiation Oncology, University of Pennsylvania Medical Center, Philadelphia [394]

**JANET E. HALL, MD**

Associate Professor of Medicine, Harvard Medical School; Assistant Chief, Reproductive Endocrine Unit, Massachusetts General Hospital, Boston [54]

**SCOTT A. HALPERIN, MD**

Professor of Pediatrics, and Associate Professor of Microbiology and Immunology, Dalhousie University; Head, Pediatric Infectious Diseases, IWK-Grace Health Center, Halifax, Nova Scotia, Canada [152]

**CHARLES H. HALSTED, MD**

Professor of Internal Medicine, Division of Clinical Nutrition and Metabolism, University of California-Davis School of Medicine, Davis [74]

**ROBERT I. HANDIN, MD**

Professor of Medicine, Harvard Medical School; Co-Director, Hematology Division, and Executive Vice Chairman, Department of Medicine, Brigham and Women's Hospital, Boston [62, 116, 117, 118]

**GAVIN HART, MD, MPH**

Director, STD Services, Royal Adelaide Hospital; Clinical Associate Professor, School of Medicine, Flinders University, Adelaide South Australia, Australia [164]

**WILLIAM L. HASLER, MD**

Associate Professor of Internal Medicine, Division of Gastroenterology, University of Michigan Medical Center, Ann Arbor [41]

**TERRY HASSOLD, PhD**

Professor, Department of Genetics, Case Western Reserve University and the Center for Human Genetics, University Hospitals of Cleveland, Cleveland [66]

**STEPHEN L. HAUSER, MD**

Betty Anker Fife Professor and Chairman, Department of Neurology, University of California San Francisco, San Francisco [355, 356, 361, 367, 368, 371, 378]

**BARTON F. HAYNES, MD**

Frederic M. Hanes Professor of Medicine, and Chair, Department of Medicine, Duke University Medical Center, Durham [305]

**J. CLAUDE HEMPHILL III, MD**

Assistant Professor of Neurology, University of California San Francisco; Director, Neurovascular and Neurocritical Care Program, San Francisco General Hospital, San Francisco [376]

**PATRICK H. HENRY, MD**

Chairman, Department of Medicine, St. John's Mercy Medical Center, St. Louis [63]

**BARBARA L. HERWALDT, MD, MPH**

Medical Epidemiologist, Division of Parasitic Diseases, Centers for Disease Control Prevention, Atlanta [215]

**MARTIN S. HIRSCH, MD**

Professor of Medicine, Harvard Medical School; Director, AIDS Clinical Research, Massachusetts General Hospital, Boston [185]

**BERNARD HIRSCHL, MD**

Associate Professor of Medicine; Head, HIV/AIDS Section, Division of Infectious Diseases, University Hospital, Geneva [171]

**MICHAEL F. HOLICK, MD, PhD**

Professor of Medicine, Department of Endocrinology, Diabetes and Metabolism, Boston University School of Medicine, Boston [340]

**STEVEN M. HOLLAND, MD**

Senior Investigator and Head, Immunopathogenesis Unit, Clinical Pathophysiology Section, Laboratory of Host Defenses, National Institute of Allergy and Infectious Diseases, National Institute of Health, Bethesda [64]

**KING K. HOLMES, MD, PhD**

Professor of Medicine, and Director, Center for AIDS and Sexually Transmitted Diseases, University of Washington; Head, Infectious Diseases, Harborview Medical Center, Seattle [132, 133]

**RANDALL K. HOLMES, MD, PhD**

Professor and Chair, Department of Microbiology, University of Colorado School of Medicine, Denver [141]

**ERIC G. HONIG, MD**

Professor of Medicine, Emory University School of Medicine, Atlanta [258]

**JAY H. HOOFNAGLE, MD**

Director, Division of Digestive Diseases and Nutrition, National Institute of Diabetes and Digestive and Kidney Diseases, National Institutes of Health, Bethesda [292]

**JONATHAN C. HORTON, MD, PhD**

Associate Professor of Ophthalmology, Neurology, and Physiology, University of California San Francisco, San Francisco [28]

**LYN HOWARD, MB**

Professor of Medicine, Associate Professor of Pediatrics, and Head-Division of Clinical Nutrition in Department of Medicine, Albany Medical College, Albany [76]

**HOWARD HU, MD, DPH**

Associate Professor of Occupational Medicine, Harvard School of Public Health; Assistant Professor of Medicine, Harvard Medical School; Associate Physician, Channing Laboratory, Brigham and Women's Hospital, Boston [5, 391, 395]

**GARY W. HUNNINGHAKE, MD**

Professor, Department of Internal Medicine, and Director, Division of Pulmonary, Critical Care, and Occupational Medicine, University of Iowa College of Medicine, Iowa City [253]

**EDWARD P. INGENITO, MD**

Assistant Professor of Medicine, Harvard Medical School; Director, Pulmonary Function Laboratory, Brigham and Women's Hospital, Boston [266]

**ROLAND H. INGRAM, JR., MD**

Martha West Looney Professor Emeritus, Emory University School of Medicine, Atlanta [32, 258, 265]

**THOMAS S. INUI, ScM, MD**

President and CEO, The Fetzer Institute, Kalamazoo, Michigan [10]

**MARK A. ISRAEL, MD**

Professor, Departments of Neurological Surgery and Pediatrics; Director, Preuss Laboratory of Molecular Neuro-Oncology, University of California San Francisco, San Francisco [370]

**KURT J. ISSELBACHER, MD**

Distinguished Mallinckrodt Professor of Medicine, Harvard Medical School; Physician and Director, Massachusetts General Hospital Cancer Center, Boston [91, 282, 289, 295, 296, 297, 345]

**RICHARD F. JACOBS, MD, FAAP**

Horace C. Caba Professor of Pediatrics, University of Arkansas for Medical Sciences; Chief, Pediatric Infectious Diseases, Arkansas Children's Hospital, Little Rock [161]

**J. LARRY JAMESON, MD, PhD**

Irving S. Cutter Professor and Chairman, Department of Medicine, Northwestern University Medical School; Physician-in-Chief, Northwestern Memorial Hospital, Chicago [65, 68, 327, 330]

**ROBERT T. JENSEN, MD**

Digestive Diseases Branch, National Institute of Diabetes and Digestive and Kidney Diseases, National Institutes of Health, Bethesda [93]

**DONALD R. JOHNS, MD**

Associate Professor of Neurology and Ophthalmology; Harvard Medical School; Director, Division of Neuromuscular Disease, Beth Israel Deaconess Medical Center, Boston [67]

**BRUCE E. JOHNSON, MD**

Associate Professor of Medicine, Brigham and Women's Hospital and Harvard Medical School; Program Director, Lowe Center for Thoracic Oncology, Dana-Farber Cancer Institute, Boston [100]

**MICHAEL JOSEPH, MD**

Physician, Weber Medical Clinic, Ltd., Olney, Illinois [30]

**MARK E. JOSEPHSON, MD**

Professor of Medicine, Harvard Medical School; Director of the Harvard Thorndike Electrophysiology Institute and Arrhythmia Services, Beth Israel Deaconess Medical Center, Boston [229, 230]

**EDWARD L. KAPLAN, MD**

Professor of Pediatrics, Department of Pediatrics, University of Minnesota Medical School, Minneapolis [235]

**MARSHALL M. KAPLAN, MD**

Professor of Medicine, Tufts University School of Medicine; Chief, Gastroenterology Department, New England Medical Center, Boston [45, 293]

**ADOLF W. KARCHMER, MD**

Chief, Division of Infectious Diseases, Beth Israel Deaconess Medical Center; Professor of Medicine, Harvard Medical School, Boston [126]

**DENNIS L. KASPER, MD, MA (Hon)**

William Ellery Channing Professor of Medicine, Professor of Microbiology and Molecular Genetics, Executive Dean for Academic Programs, Harvard Medical School; Director, Channing Laboratory, Department of Medicine, Brigham and Women's Hospital, Boston [19, 119, 130, 145, 150, 160, 167]

**LLOYD H. KASPER, MD**

Professor of Medicine (Neurology) and Microbiology, Dartmouth Medical School, Hanover [217]

**MARK A. KAY, MD, PhD**

Director, Program in Human Gene Therapy, and Associate Professor, Departments of Pediatrics and Genetics, Stanford University School of Medicine, Stanford [69]

**ELAINE T. KAYE, MD**

Clinical Instructor in Dermatology, Harvard Medical School; Assistant in Medicine, Department of Medicine, Children's Hospital Medical Center, Weston [18]

**KENNETH M. KAYE, MD**

Assistant Professor of Medicine, Harvard Medical School; Associate Physician, Division of Infectious Diseases, Brigham and Women's Hospital, Boston [18]

**GERALD T. KEUSCH, MD**

Associate Director for International Research; Director, Fogarty International Center, National Institutes of Health; Professor of Medicine, Tufts University School of Medicine; New England Medical Center, Bethesda [122, 157, 159]

**J. S. KEYSTONE, MD**

Professor of Medicine, University of Toronto; Centre for Travel and Tropical Medicine, Division of Infectious Disease, Toronto General Hospital, Toronto, Ontario, Canada [123]

**ELLIOTT KIEFF, MD, PhD**

Albee Professor of Medicine and Microbiology and Molecular Genetics, Harvard Medical School, Boston [180]

**TALMADGE E. KING, JR., MD**

Constance B. Wofsy Distinguished Professor and Vice Chairman, Department of Medicine, University of California San Francisco; Chief, Medical Services, San Francisco General Hospital, San Francisco [259]

**LOUIS V. KIRCHHOFF, MD, MPH**

Professor, Department of Internal Medicine, University of Iowa; Staff Physician, Department of Veterans Affairs Medical Center, Iowa City [216]

**JOEL N. KLINE, MD**

Assistant Professor, University of Iowa College of Medicine, Iowa City [253]

**HOWARD K. KOH, MD, PhD**

Professor of Dermatology, Medicine and Public Health, Boston University Schools of Medicine and Public Health; Co-Director, Skin Oncology Program, Director, Cancer Prevention and Control Center, Boston [86]

**ANTHONY L. KOMAROFF, MD**

Professor of Medicine, Harvard Medical School; Senior Physician, Brigham and Women's Hospital, Boston [6]

**PETER KOPP, MD**

Assistant Professor of Medicine, Division of Endocrinology, Metabolism and Molecular Medicine, Northwestern University, Chicago [65]

**WALTER J. KOROSHETZ, MD**

Associate Professor of Neurology and Medicine; Associate Director, Stroke and Clinical Neurology Services, Massachusetts General Hospital, Harvard Medical School, Boston [374]

**P. E. KOZARSKY, MD**

Associate Professor of Medicine, Emory University School of Medicine; Adjunct Assistant Professor of Medicine, Emory University School of Public Health, Atlanta [123]

**BARNETT S. KRAMER, MD, MPH**

Director, Office of Medical Applications of Research, National Institutes of Health, Bethesda [80]

**STEPHEN M. KRANE, MD**

Persis, Cyrus and Marlow B. Harrison Professor of Medicine, Harvard Medical School; Physician and Chief, Arthritis Unit, Massachusetts General Hospital, Boston [340, 343]

**HELENA KUIVANIEMI, MD, PhD**

Associate Professor, Wayne State University School of Medicine, Detroit [351]

**LOREN LAINE, MD**

Professor of Medicine, University of Southern California School of Medicine, Los Angeles [44]

**ANIL K. LALWANI, MD**

Associate Professor, Department of Otolaryngology-Head and Neck Surgery, University of California San Francisco, San Francisco [29]

**LEWIS LANDSBERG, MD**

Professor of Medicine, Vice-President for Medical Affairs, and Dean, Northwestern University Medical School, Chicago [72, 332]

**H. CLIFFORD LANE, MD**

Head, Clinical and Molecular Retrovirology Section, Laboratory of Immunoregulation; Clinical Director, National Institute of Allergy and Infectious Diseases, National Institutes of Health, Bethesda [309]



**THOMAS J. LAWLEY, MD**

Professor, Department of Dermatology, and Dean, Emory University School of Medicine, Atlanta [55, 56, 58]

**RAPHAEL C. LEE, MBME, MD, ScD, PhD(Hon)**

Professor of Surgery (Plastic), Professor of Organismal Biology and Anatomy (Biomechanics) and, Director, Electrical Injury Research Program, University of Chicago; Attending Surgeon, Ancilla / St. Mary's Burn Center, Chicago [393]

**THOMAS H. LEE, MD, MSc**

Associate Professor, Harvard Medical School; Medical Director, Partners Community Health Care, Inc., Boston [13]

**CAMMIE F. LESSER, MD, PhD**

Infectious Disease Fellow, University of Washington, Seattle [156]

**MATTHEW E. LEVISON, MD**

Professor of Medicine and Public Health, and Chief, Division of Infectious Diseases, Allegheny University of the Health Sciences, Philadelphia [255]

**PETER LIBBY, MD**

Mallinckrodt Professor of Medicine, Harvard Medical School; Chief, Cardiovascular Medicine, Brigham and Women's Hospital, Boston [241, 242]

**RICHARD W. LIGHT, MD**

Professor of Medicine, Vanderbilt University; Director, Pulmonary Diseases, Saint Thomas Hospital, Nashville [262]

**CHRISTOPHER H. LINDEN, MD**

Associate Professor, Department of Emergency Medicine, University of Massachusetts Medical School, Worcester [396]

**ROBERT LINDSAY, MBChB, PhD**

Professor of Clinical Medicine, Columbia University College of Physicians and Surgeons; Chief, Internal Medicine, Helen Hayes Hospital, West Haverstraw, New York [342]

**MARC E. LIPPMAN, MD**

John G. Searle Professor and Chairman, Department of Internal Medicine, University of Michigan Health Science System, Ann Arbor [89]

**PETER E. LIPSKY, MD**

Scientific Director, National Institute of Arthritis and Musculoskeletal and Skin Diseases, National Institutes of Health, Bethesda [307, 312, 315, 320]

**LEO X. LIU, MD, DTMH**

Assistant Professor of Medicine, Harvard Medical School; Division of Infectious Diseases, Department of Medicine, Beth Israel Deaconess Medical Center, Boston [219]

**BERNARD LO, MD**

Professor of Medicine and Director, Program in Medical Ethics, University of California San Francisco, San Francisco [2]

**DAN L. LONGO, MD**

Scientific Director, National Institute on Aging, National Institutes of Health, Bethesda and Baltimore [61, 63, 79, 82, 84, 103, 112, 113, 191]

**FRANK M. LONGO, MD, PhD**

Professor of Neurology, University of California San Francisco; Chief of Neurology, Veterans Affairs Medical Center, Department of Neurology, San Francisco [359]

**NICOLA LONGO, MD, PhD**

Associate Professor, Division of Medical Genetics, Department of Pediatrics, Emory University School of Medicine Atlanta [352, 353]

**DANIEL H. LOWENSTEIN, MD**

Carl W. Walter Professor of Neurology and Dean for Medical Education, Harvard Medical School, Boston [360]

**SHEILA A. LUKEHART, PhD**

Research Professor of Medicine, Division of Allergy and Infectious Diseases, University of Washington School of Medicine, Seattle [172, 173]

**M. MONIR MADKOUR, DM**

Military Hospital, Riyadh, Saudi Arabia; Faculty of Medicine, Ain Shams University, Cairo, Egypt, Riyadh, Saudi Arabia [160]

**LAWRENCE C. MADOFF, MD**

Assistant Professor of Medicine, Harvard Medical School; Associate Physician, Channing Laboratory and Division of Infectious Diseases, Brigham and Women's Hospital, Boston [119, 127]

**JAMES H. MAGUIRE, MD**

Associate Professor of Medicine, Harvard Medical School; Department of Immunology and Infectious Diseases, Harvard School of Public Health, Boston [129, 323, 398]

**ADEL A.F. MAHMOUD, MD, PhD**

President, Merck Vaccines, Merck & Co., Inc., Whitehouse Station, New Jersey [222]

**RONALD V. MAIER, MD**

Professor and Vice Chairman of Surgery, University of Washington; Surgeon in Chief, Harborview Medical Center, Seattle [38]

**MARK E. MAILLIARD, MD**

Associate Professor of Medicine, Division of Gastroenterology and Hepatology, University of Nebraska Medical Center, Omaha [298]

**DANIEL B. MARK, MD, MPH**

Professor of Medicine, Duke University Medical Center; Director, Outcomes Research and Assessment Group, Durham [3, 4]

**THOMAS MARRIE, MD**

Professor and Chair, Department of Medicine, University of Alberta, Edmonton, Alberta, Canada [177]

**JOSEPH B. MARTIN, MD, PhD, MA (Hon)**

Dean of the Faculty of Medicine; Caroline Shields Walker Professor of Neurobiology and Clinical Neuroscience, Harvard Medical School, Boston [12, 356, 359, 366]

**JANET R. MAURER, MD**

Head, Section of Advanced Lung Disease and Lung Transplantation, Division of Pulmonary and Critical Care Medicine, and Medical Director, Transplant Center, The Cleveland Clinic Foundation, Cleveland [267]

**ROBERT J. MAYER, MD**

Professor of Medicine, Harvard Medical School; Vice-Chair for Academic Affairs, Department of Adult Oncology, Dana-Farber Cancer Institute, Boston [90, 92]

**JOHN D. MCCONNELL, MD**

Professor and Chairman, Department of Urology, The University of Texas Southwestern Medical Center, Dallas [48]

**WILLIAM M. MCCORMACK, MD**

Professor of Medicine and of Obstetrics and Gynecology, and Chief, Division of Infectious Diseases, State University of New York, New York [178]

**E. REGIS MCFADDEN, JR., MD**

Argyl J. Beams Professor of Medicine, Director, Division of Pulmonary and Critical Care Medicine, University Hospitals of Cleveland, Cleveland [252]

**KEVIN T. MCVARY, MD**

Associate Professor, Department of Urology, Northwestern University Medical School, Chicago [51]

**NANCY K. MELLO, PhD**

Professor of Psychology (Neuroscience), Harvard Medical School; Alcohol and Drug Abuse Research Center, McLean Hospital, Belmont [389]

**SHLOMO MELMED, MD**

Professor and Director, Cedars Sinai Research Institute, University of California Los Angeles School of Medicine, Los Angeles [328]

**JERRY R. MENDELL, MD**

Chairman and Professor of Neurology; Director, Neuromuscular Disease Center, The Ohio State University, Columbus [381, 383]

**JACK H. MENDELSON, MD**

Professor of Psychiatry (Neuroscience), Harvard Medical School; Alcohol and Drug Abuse Research Center, McLean Hospital, Belmont [389]

**ROBERT O. MESSING, MD**

Associate Professor of Neurology, and Associate Director, Ernest Gallo Clinic and Research Center, University of California San Francisco, San Francisco [386]