

華南農業大學

SOUTH CHINA AGRICULTURAL UNIVERSITY



1909年 - - 1999年

《华南农业大学画册》

主 办：华南农业大学校长办公室

主 编：骆世明

副 主 编：梁深洪 王 浩

编 辑：苏雄武 王 浩 段小丽 潘 浩

英文翻译：何瑞玉

摄 影：潘 浩等

华南农业大学

SOUTH CHINA AGRICULTURAL UNIVERSITY

1909——1999

Contents

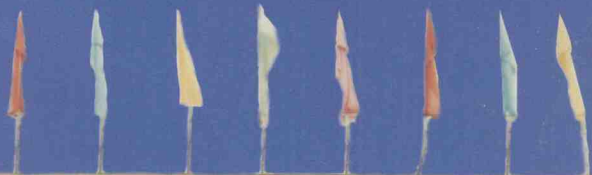
目录

- | | |
|--|----|
| ● 校徽 | 2 |
| School Badge | |
| ● 校训 | 4 |
| School Motto | |
| ● 概况 | 6 |
| Brief Introduction | |
| ● 九十年变迁 | 12 |
| Changes in the 90 Years | |
| ● 领导关怀 | 22 |
| Solicitude From Leaders | |
| ● 教学和人才培养 | 28 |
| Teaching and Talent Cultivation | |
| ● 科研与科技产业 | 44 |
| Research & Science and Technology Industry | |
| ● 学科建设 | 50 |
| Disciplines Construction | |
| ● 对外交流与合作 | 56 |
| External Exchange and Cooperation | |
| ● 党建与党群工作 | 66 |
| Party Construction and Party-Mass Work | |
| ● 校园生活 | 70 |
| Campus Life | |
| ● 校园掠影 | 76 |
| Campus Photo Tour | |

School Badge

校徽





1909—1999

East Asia

校训

修德 博学





求实

创新

1909—1999

华南农业大学地处广东省广州市，是全国重点农业大学，隶属于农业部领导，校园占地面积400余公顷，景色宜人，是广州市首批花园式单位之一。

华南农业大学历史悠久，始创于1909年。1952年，在全国院系调整中，由原中山大学农学院、岭南大学农学院以及广西大学农学院畜牧兽医系的一部分合并，成立华南农学院，毛泽东同志亲笔题署了校名，著名农业科学家丁颖教授担任首任院长。1984年经教育部批准，改名为华南农业大学。现任校长是生态学家、博士生导师骆世明教授。

经过90年的办学历程，华南农业大学已经发展成为以农为主，实行农理、农文、农工、农经相结合的多科性、综合性的全国重点大学；学校现有林学院、资源环境学院、生物技术学院、工程技术学院、经济贸易学院、乡镇企业管理学院、理学院、人文学院、成人教育学院、农学、园艺、蚕桑、食品、动物医学、动物科学、中央农业管理干部学院华南农大分院、广东省农业管理干部培训部、体育教学研究部等院、部和系，形成了全日制研究生教育、本科教育、专科教育和继续教育等多层次、多形式的办学体系。现有学生7139人，其中博士生156人、硕士生427人、本科生5898人、专科生658人。现设有4个专科专业、27个本科专业，27个学士学位授予权点，31个

硕士学位授权专业，13个博士学位授权点，4个博士后科研流动站。有国家重点学科1个，农业部重点学科和广东省重点学科各1个。

华南农业大学师资力量雄厚，教学实验设备齐全，在1868位在编教职工中，有中科院院士3人，国务院学位委员会学科评议组成员5人，教授和研究员83人，副教授和副研究员297人，讲师和助理研究员632人；博士生导师46人，硕士生导师235人。全校现有50多个各类实验室，2个农业部重点开放实验室和1个省级教学型重点实验室，拥有价值4000多万元的教学科研仪器设备。建有连接中国教育科技网，可和世界各地联系的网络中心；拥有配备先进的视听制作、多媒体课件制作设备、提供应用现代教育技术教学条件的电化教学中心；有校内外语教学广播电台，还有能同时容纳6300多名学生上课的教学大楼；图书馆建筑面积10000平方米，藏书70多万册；教学实验场占地100多公顷，教学、科研、示范推广基地250公顷，有5个教学实验工厂；建有各类体育运动场和学生活动中心。

学校坚持党的教育方针和社会主义的办学方向，教学管理实行学分制、主辅修专业制，开设有自然科学、社会科学、人文科学等多科类课程。学校为适应21世纪社会经济发展的需要，培养德、智、体全面发展，基础扎实、知识面宽、能力强、素质高、富有创新精神的

专门人才。

学校的科研水平位于全国农林重点院校前列。多年来,遵循“经济建设必须依靠科学技术,科学技术工作必须面向经济建设”的战略方针,积极开展基础研究、应用研究和开发研究以及技术推广工作,集中力量面向经济建设主战场,为农业和农村经济建设服务,取得了可喜的成绩。学校现设有2个部级研究所,1个校级研究所,25个部级研究室,17个校级研究室,10个研究开发中心,有24个校办企业。

学校地处热带亚热带区域,毗邻港澳,对外学术交流活跃。自1978年以来,先后与美洲、亚洲、欧洲等国家的19所大学建立了校际联系,与港澳台地区一些大学的学术交流也日益加强,每年都有一大批外国和地区的学者来校参观访问或讲学,学校也先后派出一批骨干教师到国外进修、攻读学位和进行科研合作。在开展国际多边农业技术交流中,得到了联合国开发计划署(UNDP)、粮农组织(FAO)和世界粮食理事会(WFC)的高度重视,于1982年在我校建立了亚太地区蚕桑培训中心,1988年建立了中国国际农业培训中心,先后为亚洲、非洲、南美洲、欧洲和太平洋地区等30多个国家培训了379名中级和高级农业技术官员。此外学校从50年代初开始招收外国留学生,迄今共有42个国家的400多位留学

生毕业,目前在校攻读本科、硕士、博士的留学生45人,来自23个国家。

在长期的教学科研和生产实践中,学校形成了优良校风;桃李芬芳,已毕业的4万多校友遍布全国各省市,为国家的改革开放,经济发展,繁荣科教,社会进步做出了重大贡献。

为进一步建好华南农业大学,国家农业部 and 广东省人民政府签订了共建协议,学校已分别在1996年和1997年顺利通过了“211工程”部门预审和立项。今日之华南农业大学正以饱满的热情,从办学体制、领导体制、教育机构、专业设置、教学内容与方法、管理体制等方面进行一系列的改革,继承和发扬学校办学的优良传统,发挥自己的优势和特点,以求实创新的精神,开拓进取,为把华南农业大学办成国内一流、国际有影响、以农为主、具有热带亚热带特点的多科性、综合性的高等农业学府而奋斗。



"South China Agricultural University (SCAU) is a key institution for higher agricultural learning directly under the jurisdiction of the Ministry of Agriculture located in Guangzhou city, Guangdong Province. The university occupies a total area of over 400 hectares. The campus is peaceful and beautiful. It has been appraised one of the first "Garden Institutions" in Guangzhou.

South China Agricultural University has a long history traced back to 1909 when it was first established. South China Agricultural College was founded in 1952, when the Agricultural College of Zhongshan (Sun Yat-sen) University, Lingnan University and a part of the Animal Husbandry and Veterinary Medicine Department of Guangxi University were merged during the nationwide academic/organization readjustment of institutions of higher learning. Chairman Mao Zedong personally inscribed the name of South China Agricultural College later in the same year. Professor Ding Ying, the renowned agricultural scientist, held the first presidency in the university. In 1984, the status of institution was raised to the university being approved by the former Ministry of Education and its name was changed to South China Agricultural University. The current president, Professor Luo Shiming, is an ecologist and a doctoral program supervisor.

In the long course of running a university, South China Agricultural University has developed into a key comprehensive institute for higher learning with many diverse disciplines. It is known not only as a major agricultural teaching and research institution, but also for its fully accredited programs in engineering, arts and sciences, economics, management and foreign trade. Directly under the university's administration are: College of Forestry, College of Environment and Natural Resources, College of Biotechnology, College of Polytechnics, College of Economics and Trade, College of Rural Enterprise Management, College of Science, College of the Humanities and Social Sciences, College of Adult Education, Department of Agronomy, Department of Horticulture, Department of Food Science, Department of Veterinary Medicine, Department of Animal Science, South China Subdivision of Central Agricultural Managerial Officer College, Guangdong Agricultural Managerial Officer Training Department and Physical Education Teaching and Re-

search Division. Together they form a multi-level and multi-approach school system with full-time postgraduate education, undergraduate education, junior college student education, and adult further education. There are now 7284 students enrolled at SCAU, among whom 6 are studying for the Ph.D. degree, 382 are for the M.S. degree, 4733 are for the B.S. degree, and 943 are for special diploma. There are now 4 specialties offered for junior college study, 27 specialties offered for undergraduate study, and there are 27 programs for the B.S. degree; 31 programs for the M.S. degree, 13 programs for the Ph.D. degree and 4 mobile stations for post-doctorate scientific research. There is 1 state-level key discipline, 1 ministry-level discipline, and 1 provincial-level discipline respectively.

The university employs more than 1868 teaching and administrative staff, among whom 3 are academicians of the Chinese Academy of Sciences, 5 members of the State Council Academic Degree Appraisal Committee, 83 full professors and senior research scientists, 297 associate professors and associate researchers, 632 lecturers and assistant researchers; there are 46 doctoral candidate supervisors and 235 master candidate supervisors. There are over 50 varied laboratories, 2 of which are principal open laboratories of the Ministry of Agriculture, and 1 provincial principle teaching laboratory. The university owns advanced and scientific research equipment and facilities valued at more than 40 million RMB. The centre of China Education and Scientific Research Network is established in SCAU to facilitate communication worldwide. The well-equipped Audio-Visual Education Centre produces visual-audio instructional media. There is an on-campus English Broadcasting Programme, accommodates over 6300 students at the same time. The university library covers an area of 10,000 square meters and possesses a collection of over 700,000 volumes. The university's teaching experimental farms occupies an area of more than 100 hectares, and is base for teaching, scientific research, demonstration and extension for over 250 hectares. In addition, there are 5 teaching experimental factories. The university has constructed various sports grounds and a student activity centre.

On the basis of perseverance in the Party's educa-

tion policy and socialist school orientation, the university has adopted a credit system, and a core-minor subject system in the teaching management. It offers multidisciplinary courses in the natural sciences, social sciences and the humanities. To adapt to the needs of social economic development in the 21st century, the university aims to cultivate the specialists with all-round development in morality, intelligence and physique, who have solid foundation, wide knowledge, strong ability, high quality and creative spirits.

The level of the university's scientific research precedes among the key agricultural and forestry institutions. Abiding by the strategic principle of "Economic construction must rely on scientific technology, while scientific technology must be dedicated to economics." The university actively promotes research in foundation areas, applications and development. The university's efforts in technological extension, particularly its strength on the economic construction battlefield for the sake of agricultural and rural economic development, have resulted in remarkable effects. There are 2 institutes at the ministry and provincial level, 1 university level; 25 laboratories at the ministry and provincial level, 17 at the university level, 10 research and development centres, and 24 school-run enterprises in SCAU.

The university is situated in both tropical and subtropical zones adjacent to Hong Kong and Macao. The external academic exchange is active. Since 1978, the university has established inter-institutional ties with the 19 universities from America, Asia, Europe and Oceania. There are also more and more academic exchanges between SCAU and universities in Hong Kong and Macao. Each year, scholars and visitors from dozens of countries and regions come to visit and lecture, and the university has also been sending groups of teachers abroad for senior training, pursuing degrees and cooperative research. In promoting the international multi-agricultural technological exchanges, the UNDP, FAO and WFC have attached great importance to the university and established the Regional Sericulture Training Centre for Asia and Pacific in 1982 and the China International Centre for Agricultural Training. They have trained 379 middle and senior officials of agricultural manage-

ment and technology from over 30 countries in Asia, Africa, South America, Europe and the Pacific Region. In addition, the university has been enrolling foreign students since early 50s and there are already over 400 foreign graduates from 42 countries. There are foreign students from 23 countries in the B.S., M.S. and Ph.D programme.

In long term teaching, research and field practice, the university has formed a superior school atmosphere. There are over 40,000 graduates spread all over the country, contributing actively to the country's reform and opening, economic development, science and teaching prosperity, and social progress.

To further construct South China Agricultural University, the Ministry of Agricultural and Grangdong people's Government have signed an agreement in co-construction. SCAU is concurrently under the leadership of the Guangdong Provincial Government. In 1996 the university passed the preliminary inspection at the ministry level for the entrance to "211 Project", and in 1997, it obtained the project approval and passed the examination by experts." Today, full of vigor and vitality, SCAU is undergoing a series of reforms in school running systems, organization structures, educational administration, course design, teaching contents and methods, and management systems. Following its fine tradition and exerting the advantages of its characteristics, the whole university intends to be "China's comprehensive agricultural institute, nationally advanced, internationally influential, with agriculture as its main direction."

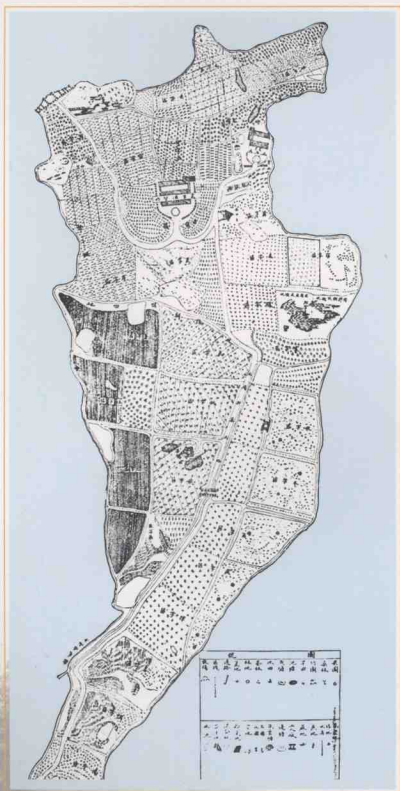


院、系专业设置一览

院系	本科专业	专科专业
农学系	农学 茶学	
园艺系	园艺	
蚕桑系	蚕学	服装
动物科学系	动物科学	动物营养与饲料科学
动物医学系	动物医学	
食品科学系	食品科学与工程	食品加工与贸易 微生物发酵技术与贸易
林学院	林学 园林 木材科学与工程	家具设计与室内装饰
经济贸易学院 乡镇企业管理 学院	农林经济管理 经济学 工商管理 金融学 会计学	
工程技术学院	农业机械化及其自动化 机械设计制造及其自动化 土木工程 交通工程	机械电子工程 工业与民用建筑 管理信息系统
生物技术学院	生物技术	生物技术
理学院	应用化学 计算机科学与技术	精细化工 财务管理与计算机 计算机应用
资源环境学院	农业资源与环境 植物保护 土地资源管理	
人文科学学院	社会工作 英语	经贸英语 经济法
成人教育学院	农业经济管理	金融 会计 国土管理与房地产 园艺 园林 农业经济管理 畜牧兽医 汽车检测与维修 机电工程 计算机应用 工业与民用建筑

Colleges, Departments and Specialities

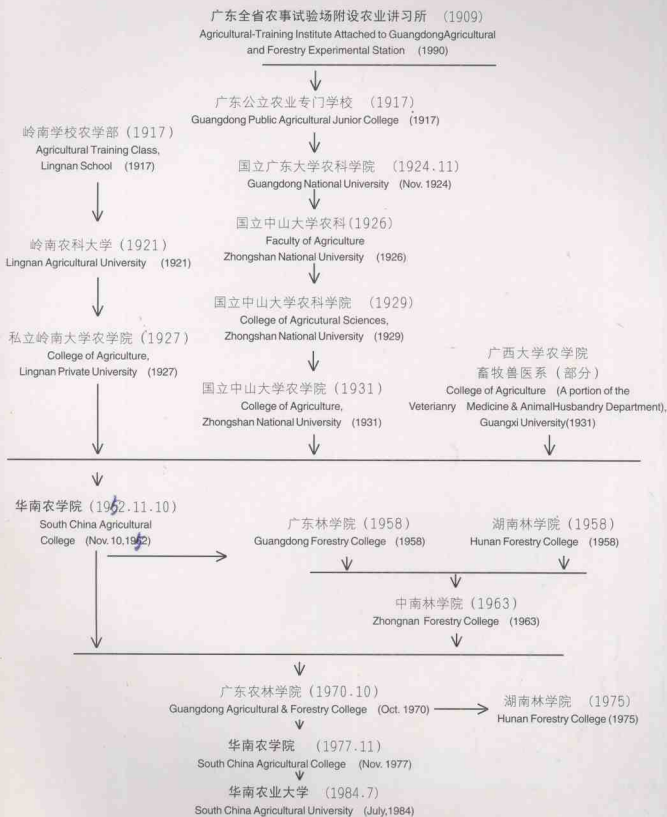
College/Department	Specialities Offered for Undergraduate Study	Specialities Offered for Junior College Study
Dept. of Agronomy	Agronomy, Teadogy	
Dept. of Horticulture	Horticulture	
Dept. of Sericulture	Sericulture	Garment Design
Dept. of Animal Science	Animal Science	Animal Nutrition and Feed Science
Dept. of Veterinary Medicine	Veterinary Medicine	
Dept. of Food Science	Food Science and Engineering	Food Processing and Trade Microorganism Fermentation and Trade
College of Forestry	Silviculture Landscape Architecture Wood Science and Engineering	Furniture Design and Room Decoration
College of Economics and Trade; College of Rural Enterprise Management	Agricultural Economics and Management Economics Industrial Management Finance Accounting	
College of Polytechnics	Agricultural Mechanization Design and Manufacturing of Machinery Civil Engineering	Machine Electronics Industrial & Civil Architecture Engineering Management Information
College of Biotechnology	Biotechnology	Biotechnology
College of Science	Applied Chemistry Computer Science and Technology	Fine Chemistry Financial Management and Computer Computer Application
College of Environment and Natural Resources	Agricultural Resource and Environment Plant Protection Land Resource Management	
College of Humanities	Social Work English	Business English Economic Law
College of Adult Education	Agricultural Economics and Management	Finance Accounting State Territory Management and Real Estate Horticulture Landscape Architecture Agricultural Economics and Management Animal Husbandry and Veterinary Medicine Automobile Testing and Maintenance Machine Electronics Engineering Computer Application Industrial & Civil Architecture Engineering



广东省农事试验场全图
A Full View Of Guagndong Agricultural Experimental Farm

学校沿革

History and Development



1909—1999



广东全省农事试验场附设农业讲习所

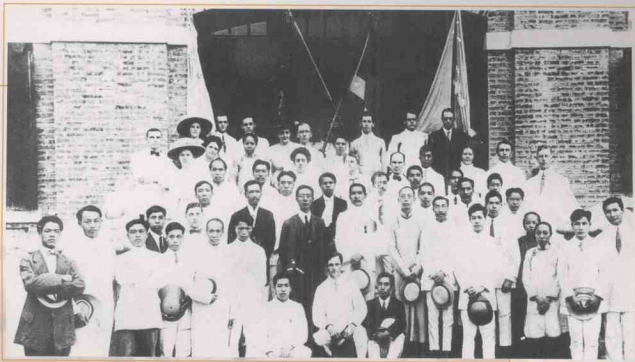
Agricultural Instruction and Training Institute Attached to Guangdong Provincial Agricultural Experimental Farm



中山大学农学院在云南澄江校舍
Residence of the College of Agriculture,
Zhongshan University in Chengjiang, Yunnan



中山大学农学院在湖南栗源堡校舍
A school building of College of Agriculture, Zhongshan University at Suyuanbao, Hunan



孙中山先生在岭南大学
Dr. Sun Yat-sen at Lingnan University



广东全省农事试验场办公室
Office of Guangdong Provincial Agricultural Experimental Farm