

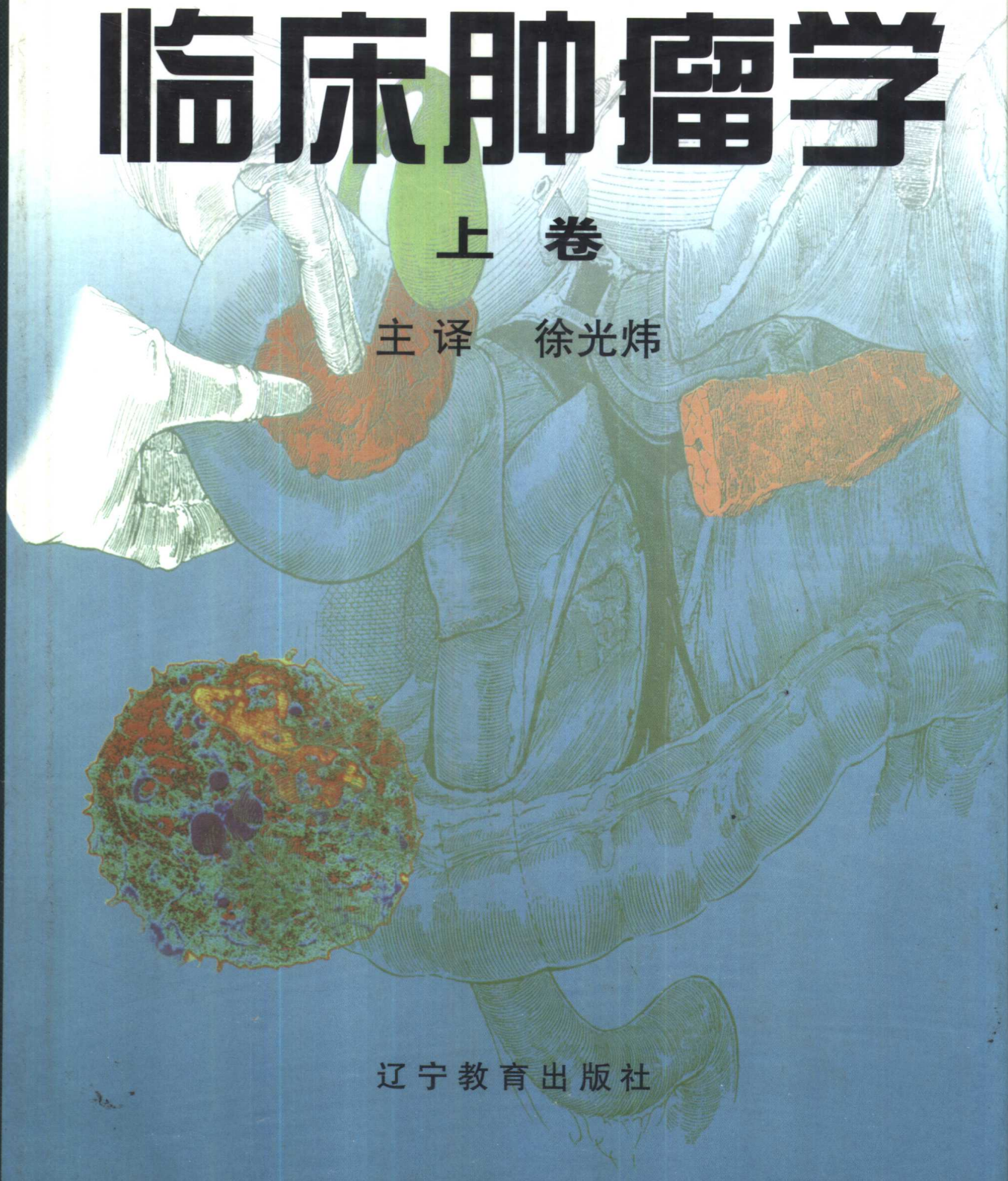
原著 [美] MARTIN D. ABELOFF  
[美] JAMES O. ARMITAGE  
[美] ALLEN S. LICHTER  
[美] JOHN E. NIEDERHUBER

# 临床肿瘤学

上卷

主译 徐光炜

辽宁教育出版社



R73

ABL

110148

# 临 床 肿 瘤 学

## 上 卷

原著 Martin D. Abeloff  
James O. Armitage  
Allen S. Lichter  
John E. Niederhuber

主译 徐光炜

辽宁教育出版社

---

# 临 床 肿 瘤 学

## 下 卷

原著 Martin D. Abeloff  
James O. Armitage  
Allen S. Lichter  
John E. Niederhuber

主译 徐光炜

辽宁教育出版社

版权合同登记号图字 06 - 1999 年第 21 号

图书在版编目(CIP)数据

临床肿瘤学(上、下卷)/(美)阿比罗夫(Abeloff, M. D.)等著;徐光炜主译.-沈阳:辽宁教育出版社,1999.10

书名原文: Clinical Oncology

ISBN 7-5382-5507-9

I. 临… II. ①阿… ②徐… III. 临床医学:肿瘤学 IV. R73

中国版本图书馆 CIP 数据核字(1999)第 08496 号

© Churchill Livingstone, a division of Harcourt Brace & Company 1995

ALL RIGHTS RESERVED. No part of this publication may be reproduced, stored in a retrieval system, or transmitted in any form or by any means, electronic, mechanical, photocopying, recording, or otherwise, without prior permission of the publisher (Churchill Livingstone, 650 Avenue of the Americas, New York, NY10011).

本书中文简体字版由 Churchill Livingstone, a division of Harcourt Brace & Company 授权辽宁教育出版社独家出版, 未经出版者书面许可, 不得以任何方式复制或抄袭本书的任何部分。

本书包含有药物使用的准确指征、副作用以及剂量, 这些可能改变。奉劝读者在服用药物时阅读厂家的有关资料。

出版发行/辽宁教育出版社

总发行人/俞晓群

地址/沈阳市和平区北一马路 108 号

网址/www.edupress.com.cn

电话/23268161

邮编/110001

责任编辑/马芳 韩梅

封面设计/曹太文

责任校对/王文斌

印刷/沈阳新华印刷厂

规格/787×1092 毫米 1/16

印张/139.5

彩页/15

版次/1999 年 10 月第 1 版

印次/1999 年 10 月第 1 次印刷

定价/560.00 元(上、下卷)

主译 徐光炜

副主译 黄信孚 刘淑俊 柯 杨

审校委员会(按姓氏笔画排列)

王仁安	叶国经	刘淑俊	刘叙仪	汤望舒	孙素莲	朱学骏
吕有勇	张宗卫	李美玉	李齐岳	余宗颐	金懋林	林本耀
郑淑蓉	季晨阳	柯 杨	郭 敏	勇威本	徐光炜	徐绍仪
顾方六	凌启柏	钱肇鄂	高叔能	黄信孚	廖秦平	

审校委员会秘书 郑国强 邸立军 於 卉

参加翻译人员(按姓氏笔画排列)

卫 燕	马 泓	方 健	王 文	王 怡	王 洁	王天峰
王永信	王红梅	王洪义	邓大君	卢新天	白 羽	刘 英
刘彩云	吕善根	孙 梅	孙桂香	孙素莲	安彤同	朱 旭
朱步东	邢宝才	吴梅娜	宋国红	张 民	张 述	张 联
张 蕾	张力建	张文卿	张运涛	张京泰	张宗卫	张彦芳
张珊文	张晓春	张梅颖	李 洁	李 燕	李宁忱	李吉友
李齐岳	李美玉	杨 跃	步召德	沈 琳	邸立军	陈香玲
季加孚	庞成林	欧阳涛	郑 文	郑国强	郑淑芳	勇威本
郝纯毅	郝金瑞	唐丽丽	聂 璠	郭 敏	郭 梅	鲍圣德
盖 芳	潘惠艳					



---

# 作者名录

---

**James L. Abbruzzese, M.D.**

Associate Professor, Chief, Section of General Oncology, Departments of Gastrointestinal Medical Oncology and Clinical Investigation, University of Texas M.D. Anderson Cancer Center, Houston, Texas

**Martin D. Abeloff, M.D.**

Eli Kennerly Marshall, Jr. Professor, Department of Oncology, The Johns Hopkins University School of Medicine; Oncologist-in-Chief, The Johns Hopkins Hospital and Health Systems, Baltimore, Maryland

**Joseph Aisner, M.D.**

Professor, Departments of Medicine, Oncology, Epidemiology, and Preventive Medicine, University of Maryland School of Medicine; University of Maryland Cancer Center, Baltimore, Maryland

**Kenneth C. Anderson, M.D., Ph.D.**

Associate Professor, Department of Medicine, Harvard Medical School; Medical Director, Blood Component Laboratory, Divisions of Medical Oncology and Hematologic Malignancies, Dana-Farber Cancer Institute, Boston, Massachusetts

**Michael Andreeff, M.D., Ph.D.**

Professor and Chief, Leukemia Section, Department of Hematology, Division of Medicine, University of Texas M.D. Anderson Cancer Center, Houston, Texas

**Karen H. Antman, M.D.**

Professor and Chief, Division of Oncology, Department of Medicine, Columbia University College of Physicians and Surgeons, New York, New York

**James O. Armitage, M.D.**

Professor and Chairman, Department of Internal Medicine, University of Nebraska College of Medicine, Omaha, Nebraska

**Sarah S. Auchincloss, M.D.**

Consultant, Department of Psychiatry, Memorial Sloan-Kettering Cancer Institute and Memorial Hospital for Cancer

and Allied Diseases; Assistant Attending Psychiatrist, The New York Hospital, New York, New York

**David A. August, M.D.**

Associate Professor, Division of Surgical Oncology, Department of Surgery, Robert Wood Johnson Medical School, New Brunswick, New Jersey

**Douglas C. Aziz, M.D., Ph.D.**

Medical Director and Pathologist, Specialty Laboratories, Inc.; (OnQuest) Santa Monica, California

**David S. Bardenstein, M.D.**

Assistant Professor, Departments of Ophthalmology and Pathology, Case Western Reserve University School of Medicine; Ocular Oncology Service, Department of Ophthalmology and Ocular Pathology Service, Department of Pathology, University Hospitals of Cleveland, Cleveland, Ohio

**John G. Bartlett, M.D.**

Professor and Chief, Division of Infectious Diseases, Department of Medicine, John Hopkins University School of Medicine, Baltimore, Maryland

**J. Augusto Bastidas, M.D.**

Assistant Professor, Department of Surgery, Stanford University School of Medicine, Stanford, California

**Eugene A. Bauer, M.D.**

Professor and Chairman, Department of Dermatology, Stanford University School of Medicine, Stanford, California

**Robert W. Beart, Jr., M.D.**

Professor and Chief, Colorectal Surgery, Department of Surgery, University of Southern California School of Medicine, Los Angeles, California

**Chandra P. Belani, M.D.**

Associate Professor, Division of Medical Oncology, Department of Medicine, University of Pittsburgh School of Medicine; Co-Director, Experimental Therapeutics Program, Pittsburgh Cancer Institute, Pittsburgh, Pennsylvania

**Charles L. Bennett, M.D., Ph.D.**

Associate Professor, Northwestern University Medical School; Chairman, Division of Health Services Research, Department of Medicine, Veterans Affairs Medical Center-Lakeside, Chicago, Illinois

**John M. Bennett, M.D.**

Professor, Departments of Medicine, Pathology, and Laboratory Medicine, University of Rochester School of Medicine and Dentistry; Attending Physician, Department of Medicine, Medical Oncology Unit, Strong Memorial Hospital, Rochester, New York

**Jonathan S. Berek, M.D.**

Professor and Chief, Division of Gynecologic Oncology, Department of Obstetrics and Gynecology, University of California, Los Angeles, UCLA School of Medicine, Los Angeles, California

**Philip Bierman, M.D.**

Associate Professor, Section of Oncology and Hematology, Department of Internal Medicine, University of Nebraska College of Medicine, Omaha, Nebraska

**Michael R. Bishop, M.D.**

Assistant Professor, Section of Oncology and Hematology, Department of Internal Medicine, University of Nebraska College of Medicine, Omaha, Nebraska

**Joan Bladé, M.D.**

Visiting Clinician, Division of Hematology and Internal Medicine, Mayo Clinic, Rochester, Minnesota

**J. Yves Blay, M.D.**

Pediatric Department, Centre Leon Bérard, Lyon, France

**Clara D. Bloomfield, M.D.**

Professor and Chief, Division of Oncology, Department of Medicine, University of New York at Buffalo; Chair, Department of Medicine, Roswell Park Cancer Institute, Buffalo, New York

**Patrick J. Boland, M.D.**

Associate Attending Surgeon, Department of Orthopaedics, Memorial Sloan-Kettering Cancer Center, New York, New York

**Thierry Boon, Ph.D.**

Director and Professor, Ludwig Institute for Cancer Research, Brussels Branch and Cellular Genetics Unit, Catholic University of Louvain, Brussels, Belgium

**Georgia Bosserman, R.N.**

Vascular Access Specialist for Oncology, Department of Oncology, Community College of Baltimore, Baltimore, Maryland

**David Botstein, M.D., Ph.D.**

Professor and Chairman, Department of Genetics, Stanford University School of Medicine, Stanford, California

**Eric Bouffet, M.D.**

Pediatric Department, Centre Leon Bérard, Lyon, France

**Murray F. Brennan, M.D.**

Professor, Department of Surgery, Cornell University Medical College; Chairman, Department of Surgery, Alfred P. Sloan Chair in Surgery, Memorial Sloan-Kettering Cancer Center, New York, New York

**Vincent Brichard, M.D.**

Senior Research Assistant, Fonds National de la Recherche Scientifique, Brussels, Belgium

**Julia A. Bridge, M.D.**

Associate Professor, Departments of Pathology and Microbiology, Pediatrics, and Orthopaedic Surgery and Rehabilitation, University of Nebraska College of Medicine, Omaha, Nebraska

**David Brunat-Mentigny, M.D.**

Pediatric Department, Centre Leon Bérard, Lyon, France

**Patrick A. Burch, M.D.**

Assistant Professor, Department of Oncology, Mayo Medical School; Consultant, Medical Oncology, Mayo Clinic, Rochester, Minnesota

**Lowell J. Byers, M.D.**

Assistant Professor, Department of Obstetrics and Gynecology, University of Missouri—Kansas City School of Medicine; Gynecologic Oncologist, St Luke's Hospital of Kansas City, Kansas City, Missouri

**Michael J. Campbell, Ph.D.**

Assistant Professor, Division of Surgical Oncology, Department of Surgery, Stanford University School of Medicine, Stanford, California

**A. Catherine Casey, M.D.**

Fellow, Division of Gynecologic Oncology, Department of Obstetrics and Gynecology, University of California, Los Angeles, UCLA School of Medicine, Los Angeles, California

**Richard Champlin, M.D.**

Professor and Chief, Bone Marrow Transplant Section, Department of Hematology, Division of Medicine, University of Texas M.D. Anderson Cancer Center, Houston, Texas

**Alfred E. Chang, M.D.**

Professor, Division of Surgical Oncology, Department of Surgery, University of Michigan Medical School, Ann Arbor, Michigan

**Bruce D. Cheson, M.D.**

Head, Medicine Section, Clinical Investigations Branch, Division of Cancer Treatment, National Cancer Institute, Bethesda, Maryland

**Jeffrey W. Clark, M.D.**

Associate Professor, Department of Medicine, Brown University School of Medicine; Staff Physician, Division of Medical Oncology, Department of Medicine, Roger Williams Hospital, Providence, Rhode Island

**Peter F. Coccia, M.D.**

Professor, Section of Oncology and Hematology, Departments of Internal Medicine and Pediatrics, University of Nebraska College of Medicine, Omaha, Nebraska

**Robert E. Coleman, M.D.**

Senior Lecturer and Hon. Consultant Medical Oncologist, YCRC Department of Clinical Oncology, Weston Park Hospital, Sheffield, England

**Sharon L. Collins, M.D.**

Associate Professor, Department of Otolaryngology-Head and Neck Surgery, Loyola University of Chicago Stritch School of Medicine, Maywood, Illinois; Chief, Section of Otolaryngology-Head and Neck Surgery, Department of General Surgery, Edward Hines Veteran's Affairs Hospital, Hines, Illinois

**Robert L. Comis, M.D.**

Ludwig A. Kind Professor and Director, Division of Neoplastic Diseases, Department of Medicine, Jefferson Medical College of Thomas Jefferson University; Director, Jefferson Cancer Center, Thomas Jefferson University Hospital, Philadelphia, Pennsylvania

**Edward M. Copeland, M.D.**

Edward R. Woodward Professor and Chairman, Department of Surgery, University of Florida College of Medicine, Gainesville, Florida

**Pierre G. Coulie, M.D.**

Investigator, Ludwig Institute for Cancer Research, Brussels Branch and Cellular Genetics Unit, Catholic University of Louvain, Brussels, Belgium

**Steven A. Curley, M.D.**

Associate Professor and Chief, Gastrointestinal Tumor Surgery, Department of Surgical Oncology, Division of Medicine, University of Texas M.D. Anderson Cancer Center, Houston, Texas

**Giulio J. D'Angio, M.D.**

Professor Emeritus, Department of Radiation Oncology, University of Pennsylvania School of Medicine; Past Director of Children's Research, Division of Pediatric Oncology, Children's Hospital of Philadelphia, Philadelphia, Pennsylvania

**Rodney Davis, M.D.**

Fellow, Urology Research Laboratory, Division of Urology, University of Texas M.D. Anderson Cancer Center, Houston, Texas

**Carol Dedeo, R.N.**

Vascular Access Specialist for Oncology, Department of Oncology, Towson State University, Baltimore, Maryland

**Albert B. Deisseroth, M.D., Ph.D.**

Anderson Professor for Cancer Treatment and Research and Chairman, Department of Hematology, Division of Medicine, University of Texas M.D. Anderson Cancer Center, Houston, Texas

**George D. Demetri, M.D.**

Assistant Professor, Department of Medical Oncology, Harvard Medical School; Associate Physician, Divisions of Medical Oncology and Cancer Pharmacology, Department of Medicine, Dana-Farber Cancer Institute, Boston, Massachusetts

**Edward A. Dominguez, M.D.**

Assistant Professor, Section of Infectious Diseases, Department of Internal Medicine, University of Nebraska College of Medicine, Creighton University School of Medicine, Omaha, Nebraska

**Ross C. Donehower, M.D.**

Associate Professor, Departments of Oncology and Medicine, The Johns Hopkins University School of Medicine; Director, Division of Medical Oncology, The Johns Hopkins Oncology Center, Baltimore, Maryland



**John H. Donohue, M.D.**

Associate Professor, Department of Surgery, Mayo Medical School; Consultant, General Surgery, Mayo Clinic, Rochester, Minnesota

**William C. Dooley, M.D.**

Associate Professor, Departments of Surgery and Oncology, The Johns Hopkins University School of Medicine, Baltimore, Maryland

**Michael Dougherty, M.D.**

Radiation Oncologist, Triangle Radiation Oncology, Beaver, Pennsylvania

**Douglas J. Ellison, M.D.**

Head, Section of Hematopathology, Department of Pathology, Scripps Clinic and Research Foundation, La Jolla, California

**Victor M. Elner, M.D.**

Associate Professor, Department of Ophthalmology, University of Michigan Medical School, Ann Arbor, Michigan

**Robin Farias-Eisner, M.D.**

Associate Professor, Division of Gynecologic Oncology, Department of Obstetrics and Gynecology, University of California, Los Angeles, UCLA School of Medicine, Los Angeles, California

**Eric R. Fearon, M.D.**

Assistant Professor, Departments of Pathology and Biology, Yale University School of Medicine, New Haven, Connecticut

**Ronald Feld, M.D., F.R.C.P.C., F.A.C.P.**

Deputy Chief, Department of Medicine, Princess Margaret Hospital, Toronto, Ontario, Canada

**Isaiah J. Fidler, D.V.M., Ph.D.**

Professor and Chairman, Department of Cell Biology and Professor, Department of Urology, University of Texas M.D. Anderson Cancer Center, Houston, Texas

**Richard I. Fisher, M.D.**

Dorothy N. and J.D. Stetson Professor of Oncology, Division of Hematology/Oncology, Department of Medicine, Loyola University of Chicago Stritch School of Medicine, Maywood, Illinois

**William H. Fleming, M.D., Ph.D.**

Assistant Professor, Division of Hematology/Oncology, Department of Medicine, Emory University School of Medicine; Medical Director, Flow Cytometry Laboratory, Attending Physician, Bone Marrow Transplant Program, Emory University Hospital, Atlanta, Georgia

**Robert L. Foote, M.D.**

Associate Professor, Department of Oncology, Mayo Medical School; Consultant, Division of Radiation Oncology, Department of Oncology, Mayo Clinic, Rochester, Minnesota

**Arlene A. Forastiere, M.D.**

Associate Professor, Department of Oncology, The Johns Hopkins University School of Medicine, Baltimore, Maryland

**Jeffrey M. Fowler, M.D.**

Assistant Professor, Department of General Oncology, University of Minnesota Medical School, Minneapolis, Minnesota

**Stanley R. Frankel, M.D.**

Associate Professor, Department of Medicine, Georgetown University School of Medicine; Director, Adult Leukemia Service, Vincent T. Lombardi Cancer Center, Georgetown University Medical Center, Washington, D.C.

**Didier Frappaz, M.D.**

Pediatric Department, Centre Leon Bérard, Lyon, France

**Robin Freedberg, M.D.**

Assistant Professor, Division of Cardiology, Department of Medicine, New York University School of Medicine, New York, New York

**David J. Friedman, M.D.**

Assistant Professor, Division of Dermatology, Brown University School of Medicine, Providence, Rhode Island; Director, Division of Dermatology, Memorial Hospital, Pawtucket, Rhode Island

**Zvi Fuks, M.D.**

Chairman, Department of Radiation Oncology, Memorial Sloan-Kettering Cancer Center, New York, New York

**Laurie E. Gaspar, M.D.**

Assistant Professor, Department of Radiation Oncology, Wayne State University School of Medicine, Detroit, Michigan

**Dennis A. Gastineau, M.D.**

Associate Professor, Division of Hematology, Mayo Medical School, Rochester, Minnesota

**Ellen R. Gaynor, M.D.**

Associate Professor, Division of Hematology/Oncology, Department of Medicine, Loyola University of Chicago Stritch School of Medicine, Maywood, Illinois

**Mark R. Gilbert, M.D.**

Assistant Professor, Departments of Neurology, Medicine and Neurosurgery, University of Pittsburgh School of Medicine; Co-Director, Brain Tumor Center, Pittsburgh Cancer Institute, Pittsburgh, Pennsylvania

**Robert J. Ginsberg, M.D.**

Professor, Department of Surgery, Cornell University Medical College; Chief, Thoracic Service, Department of Surgery, Memorial Sloan-Kettering Cancer Center, New York, New York

**Jesse M. Goldman, M.D.**

Clinical Instructor, Division of Nephrology, Department of Medicine, Jefferson Medical College of Thomas Jefferson University; Director, Peritoneal Dialysis, Intermediate Dialysis Unit, Thomas Jefferson University Hospital, Philadelphia, Pennsylvania

**Daniel M. Green, M.D.**

Professor, Department of Pediatrics, State University of New York at Buffalo School of Medicine and Biomedical Sciences; Associate Chief, Pediatrics, Roswell Park Cancer Institute, Buffalo, New York

**H. Barton Grossman, M.D.**

Professor and W.A. "Tex" and Deborah Moncrieff Jr. Chair, Department of Urology, Division of Surgery and Professor, Department of Cell Biology, University of Texas M.D. Anderson Cancer Center, Houston, Texas

**Stuart A. Grossman, M.D.**

Associate Professor, Departments of Oncology, Medicine, and Neurosurgery, The Johns Hopkins University School of Medicine; Director, Neuro-Oncology, The Johns Hopkins Oncology Center, Baltimore, Maryland

**Leonard L. Gunderson, M.D.**

Professor, Department of Oncology, Mayo Medical School; Chair, Radiation Oncology, Mayo Clinic, Rochester, Minnesota

**Thomas M. Habermann, M.D.**

Assistant Professor, Department of Medicine, Mayo Medical School; Head, Section of Hematology, Mayo Clinic, Rochester, Minnesota

**John D. Hainsworth, M.D.**

Associate Medical Director, Centennial Medical Center, The Sarah Cannon Cancer Center, Nashville, Tennessee

**William D. Haire, M.D.**

Associate Professor, Section of Oncology and Hematology, Department of Internal Medicine, University of Nebraska College of Medicine, Omaha, Nebraska

**Daniel Haller, M.D.**

Professor and Associate Chief for Clinical Affairs, Division of Hematology-Oncology, Department of Medicine, University of Pennsylvania School of Medicine, Philadelphia, Pennsylvania

**Richard F. Heitmiller, M.D.**

Assistant Professor, Department of Surgery, The Johns Hopkins University School of Medicine, Baltimore, Maryland

**Geoffrey P. Herzig, M.D.**

Professor, Department of Medicine, State University of New York at Buffalo School of Medicine and Biological Sciences; Chief, Departments of Hematologic Oncology and Bone Marrow Transplantation, Roswell Park Cancer Institute, Buffalo, New York

**Bruce E. Hillner, M.D.**

Associate Professor, Department of Medicine, Massey Cancer Center, Virginia Commonwealth University Medical College of Virginia School of Medicine, Richmond, Virginia

**Margaret L. Ho, M.A., C.C.C./S.L.P.**

Supervisor, Speech Pathology, Memorial Sloan-Kettering Cancer Center, New York, New York

**John T. Isaacs, M.D.**

Professor, Departments of Oncology and Urology, The Johns Hopkins School of Medicine, Baltimore, Maryland

**Valerie K. Israel, M.D.**

Fellow, Department of Medical Oncology, University of Southern California School of Medicine, Los Angeles, California

**David H. Johnson, M.D.**

Professor and Director, Division of Oncology, Department of Medicine, Vanderbilt University School of Medicine, Nashville, Tennessee

**Hagop Kantarjian, M.D.**

Professor, Department of Hematology, Division of Medicine, University of Texas M.D. Anderson Cancer Center, Houston, Texas

**Dwight Kaufman, M.D.**

Deputy Director, Division of Cancer Treatment, Frederick Cancer Research and Development Center, National Cancer Institute, Frederick, Maryland

**Margaret Kemeny, M.D.**

Chief, Division of Surgical Oncology, North Shore University Hospital, Manhasset, New York

**Nancy E. Kemeny, M.D.**

Professor, Department of Medicine, Cornell University Medical College; Attending Physician, Department of Medical Oncology, Memorial Sloan-Kettering Cancer Center, New York, New York

**Jeanne D. Kennedy**

Director, Community and Patient Relations, Stanford University Hospital, Stanford, California

**Thomas W. Kensler, Ph.D.**

Professor, Division of Toxicological Sciences, Department of Environmental Health Sciences, The Johns Hopkins University School of Hygiene and Public Health, Baltimore, Maryland

**Anne Kessinger, M.D.**

Professor and Chief, Section of Oncology and Hematology, Department of Internal Medicine, University of Nebraska College of Medicine, Omaha, Nebraska

**Issa Khouri, M.D.**

Assistant Internist and Instructor, Department of Hematology, Division of Medicine, University of Texas M.D. Anderson Cancer Center, Houston, Texas

**Elliot Kieff, M.D.**

Ryan Albee Professor, Department of Medicine, Professor, Department of Microbiology and Molecular Genetics, Chairman, Virology Program, Harvard Medical School; Director, Infectious Disease Division, Brigham and Women's Hospital, Boston, Massachusetts

**Barry M. Kinzbrunner, M.D.**

Vice President, Clinical Research and Development, Vitas Healthcare Corporation; Assistant Professor, Department of Medicine, University of Miami School of Medicine, Miami, Florida

**Peter A. Kouides, M.D.**

Assistant Professor, Department of Medicine, University of Rochester School of Medicine and Dentistry; Attending Physician, Hematology Unit, Department of Medicine, Rochester General Hospital, Rochester, New York

**John F. Kuttesch, M.D., Ph.D.**

Assistant Professor, Department of Pediatrics, University of Tennessee, Memphis, College of Medicine; Assistant Member, Department of Hematology/Oncology, St. Jude's Children's Research Hospital, Memphis, Tennessee

**Robert A. Kyle, M.D.**

Professor, Departments of Medicine and Laboratory Medicine and Pathology, Mayo Medical School; Consultant, Division of Hematology and Internal Medicine, Mayo Clinic, Rochester, Minnesota

**Elisabeth Lachmann, M.D.**

Assistant Professor, Department of Rehabilitation Medicine, Cornell University Medical College; Assistant Attending Physiatrist, Department of Rehabilitation Medicine, The New York Hospital-Cornell Medical Center; Assistant Attending Physiatrist, Memorial Sloan-Kettering Cancer Center, New York, New York

**Theodore S. Lawrence, M.D.**

Associate Professor, Department of Radiation Oncology, University of Michigan Medical School, Ann Arbor, Michigan

**Ming-Sheng Lee, M.D.**

Assistant Professor, Hematopathology Program, Division of Laboratory Medicine, University of Texas M.D. Anderson Cancer Center, Houston, Texas

**Bernard Levin, M.D.**

Professor, Department of Medicine, and Vice President of Cancer Prevention, University of Texas Medical School at Houston, Houston, Texas

**Allen S. Lichter, M.D.**

Isadore Lampe Professor and Chair, Department of Radiation Oncology, University of Michigan Medical School, Ann Arbor, Michigan

**D. Scott Lind, M.D.**

Professor, Department of Surgery, University of Florida College of Medicine, Gainesville, Florida

**Allan Lipton, M.D.**

Professor, Department of Medicine, Pennsylvania State University College of Medicine; Chief, Division of Oncology, Milton S. Hershey Medical Center, Hershey, Pennsylvania

**T. Andrew Lister, M.D.**

Professor, ICRF Department of Medical Oncology, St Bartholomew's Hospital, London, England

**Dan L. Longo, M.D.**

Director, Biological Response Modifiers Program, Division of Cancer Treatment, Frederick Cancer Research and Development Center, Frederick, Maryland

**Charles D. Loprinzi, M.D.**

Professor, Department of Oncology, Mayo Medical School; Chief, Division of Medical Oncology, Department of Oncology, Mayo Clinic, Rochester, Minnesota

**Matthew J. Loscalzo, M.S.W.**

Director, Department of Oncology Social Work, The Johns Hopkins Oncology Center, Baltimore, Maryland

**John Macdonald, M.D.**

Professor and Chief, Division of Medical Oncology, Department of Medicine, Temple University School of Medicine; Medical Director, Temple University Cancer Center, Philadelphia, Pennsylvania

**Marie Marchand, M.D.**

Clinical Investigator, Ludwig Institute for Cancer Research, Brussels Branch and Cellular Genetics Unit, Catholic University of Louvain, Brussels, Belgium

**Fray F. Marshall, M.D.**

Professor, Department of Urology, The Johns Hopkins University School of Medicine; Director, Adult Urology, The James Buchanan Brady Urological Institute, The Johns Hopkins Hospital, Baltimore, Maryland

**Robert J. Mayer, M.D.**

Professor, Department of Medicine, Harvard Medical School; Clinical Director, Department of Medicine, Dana-Farber Cancer Institute, Boston, Massachusetts

**Patricia M. McCormack, M.D.**

Attending Surgeon, Thoracic Service, Department of Surgery, Memorial Sloan-Kettering Cancer Center, New York, New York

**J. Stephen McDaniel, M.D.**

Assistant Professor, Department of Psychiatry and Behavioral Sciences, Emory University School of Medicine; Medical Director, Psychiatric Services, Grady Health System Infectious Disease Program, Atlanta, Georgia

**Charles J. McDonald, M.D.**

Professor and Director, Division of Dermatology, Brown University School of Medicine; Chair, Department of Dermatology, Roger Williams Medical Center; Director, Division of Dermatology, Rhode Island Hospital, Providence, Rhode Island

**Sandra McDonald, M.D.**

Associate Professor, Department of Radiation Oncology, University of Rochester School of Medicine and Dentistry; Department of Radiation Oncology, Strong Memorial Hospital, Rochester, New York

**Despina Missaillidou, M.D.**

Visiting Assistant Professor, Department of Radiation Oncology, University of Rochester School of Medicine and Dentistry; Department of Radiation Oncology, University of Rochester Medical Center-Strong Memorial Hospital, Rochester, New York

**A. Ross Morton, M.D.**

Associate Professor, Department of Medicine, Queen's University Faculty of Medicine; Consultant Nephrologist, Kingston General Hospital, Kingston, Ontario, Canada

**Jennie J. Muglia, M.D.**

Assistant Professor, Division of Dermatology, Brown University School of Medicine; Assistant Director, Division of Dermatology, Rhode Island Hospital, Providence, Rhode Island

**Michael J. Murray, M.D.**

Assistant Professor, Center for Radiation Oncology, Vanderbilt University School of Medicine, Nashville, Tennessee

**Ronald B. Natale, M.D.**

Professor, Departments of Medicine and Urology, University of Southern California School of Medicine; Associate Director,

Medical Oncology, USC/Kenneth Norris Jr. Comprehensive Cancer Center, Los Angeles, California

**James R. Neff, M.D.**

Professor and Chair, Department of Orthopaedic Surgery and Rehabilitation and Professor, Department of Pathology and Microbiology, University of Nebraska College of Medicine, Omaha, Nebraska

**Charles B. Nemeroff, M.D., Ph.D.**

Reunette W. Harris Professor and Chairman, Department of Psychiatry and Behavioral Sciences, Emory University School of Medicine, Atlanta, Georgia

**John E. Niederhuber, M.D.**

Emile Holman Professor and Chair, Department of Surgery, Professor, Department of Microbiology and Immunology, Stanford University School of Medicine; Chief of Surgery, Stanford University Hospital, Stanford, California

**Norman Nigro, M.D.**

Clinical Professor (retired), Department of Surgery, Wayne State University School of Medicine, Detroit, Michigan

**Alberto S. Pappo, M.D.**

Assistant Professor, Department of Pediatrics, University of Tennessee, Memphis, College of Medicine; Assistant Member, Department of Hematology/Oncology, St. Jude's Children's Research Hospital, Memphis, Tennessee

**Roy A. Patchell, M.D.**

Associate Professor, Departments of Neurosurgery and Neurology, University of Kentucky College of Medicine, Lexington, Kentucky

**David G. Payne, M.D.**

Assistant Professor, Department of Radiation Oncology, University of Toronto Faculty of Medicine; Department of Radiation Oncology, Princess Margaret Hospital, Toronto, Ontario, Canada

**Michael C. Perry, M.D.**

Professor and Senior Associate Dean, Division of Internal Medicine, Department of Medicine, University of Missouri—Columbia School of Medicine; Medical Director, University of Missouri—Columbia Ellis Fischel Cancer Center, Columbia, Missouri

**Thierry O. Philip, M.D., Ph.D.**

Pediatric Department, Centre Leon Bérard, Lyon, France

**Steven Piantadosi, M.D., Ph.D.**

Associate Professor, Department of Oncology, Director of Oncology Biostatistics, The Johns Hopkins Oncology Center, Johns Hopkins University School of Medicine; Associate Professor, Department of Biostatistics and Epidemiology, Johns Hopkins School of Hygiene and Public Health, Baltimore, Maryland

**Lori J. Pierce, M.D.**

Assistant Professor, Department of Radiation Oncology, University of Michigan Medical School, Ann Arbor, Michigan

**Donald Pinkel, M.D.**

Professor and Kana Research Chair in Pediatric Leukemia, Department of Pediatrics, University of Texas Medical School at Houston; University of Texas M.D. Anderson Cancer Center, Houston, Texas

**Lawrence D. Piro, M.D.**

Director, Ida M. and Cecil H. Green Cancer Center; Head, Division of Hematology and Oncology, Scripps Clinic and Research Foundation, La Jolla, California

**Peter W. T. Pisters, M.D.**

Department of Surgical Oncology, University of Texas Medical School at Houston; University of Texas M.D. Anderson Cancer Center, Houston, Texas

**Mark R. Pittelkow, M.D.**

Associate Professor, Department of Dermatology, Mayo Medical School; Consultant, Department of Dermatology, Mayo Clinic, Rochester, Minnesota

**Elizabeth Poplin, M.D.**

Associate Professor, Division of Hematology/Oncology, Department of Medicine, Virginia Commonwealth University Medical College of Virginia School of Medicine, Richmond, Virginia

**Laurel C. Preheim, M.D.**

Professor, Department of Medicine and Chief, Section of Infectious Diseases, Department of Internal Medicine, University of Nebraska College of Medicine, Creighton University School of Medicine, Omaha, Nebraska

**Martin N. Raber, M.D.**

Physician-in Chief, University of Texas M.D. Anderson Cancer Center, Houston, Texas

**Elizabeth C. Reed, M.D.**

Associate Professor, Section of Oncology and Hematology, Department of Internal Medicine, University of Nebraska College of Medicine, Omaha, Nebraska

**Tyvin A. Rich, M.D.**

Professor, Department of Radiotherapy, Division of Medicine, University of Texas M. D. Anderson Cancer Center, Houston, Texas

**Gloria A. Richard-Davis, M.D.**

Professor, Department of Obstetrics and Gynecology, Tulane University School of Medicine, New Orleans, Louisiana

**Robert D. Rubens, M.D.**

Professor, Department of Clinical Oncology, United Medical and Dental Schools, Guy's and St. Thomas Hospitals; ICRF Clinical Oncology Unit, Guy's Hospital, London, England

**Philip Rubin, M.D.**

Professor, Department of Radiation Oncology, University of Rochester School of Medicine and Dentistry; Chairman, Department of Radiation Oncology, Strong Memorial Hospital, Rochester, New York

**John C. Ruckdeschel, M.D.**

Professor, Department of Medicine, University of South Florida College of Medicine; Center Director, H. Lee Moffitt Cancer Center and Research Institute, Tampa, Florida

**Mark E. Rupp, M.D.**

Assistant Professor, Section of Infectious Diseases, Department of Internal Medicine, University of Nebraska College of Medicine, Creighton University School of Medicine, Omaha, Nebraska

**Francis W. Ruscetti, Ph.D.**

Chief, Laboratory of Leukocyte Biology, Biological Response Modifiers Program, Division of Cancer Treatment, Frederick Cancer Research and Development Center, National Cancer Institute, Frederick, Maryland

**Victor M. Santana, M.D.**

Associate Professor, Department of Pediatrics, University of Tennessee, Memphis, College of Medicine; Associate Member,

Department of Hematology/Oncology, St. Jude's Children's Research Hospital, Memphis, Tennessee

**Alan Saven, M.D.**

Associate Director for Clinical Research, Ida M. and Cecil H. Green Cancer Center; Member, Division of Hematology and Oncology, Scripps Clinic and Research Foundation, La Jolla, California

**Howard I. Scher, M.D.**

Associate Professor, Department of Medicine, Cornell University Medical College; Chief, Genitourinary Oncology Service and Associate Attending Physician, Division of Solid Tumor Oncology, Department of Medicine, Memorial Sloan-Kettering Cancer Center, New York, New York

**David Schottenfeld, M.D.**

John G. Searle Professor of Epidemiology, Department of Epidemiology, University of Michigan School of Public Health; Professor, Division of Hematology/Oncology, Department of Medicine, University of Michigan Medical School, Ann Arbor, Michigan

**Herbert S. Schwartz, M.D.**

Associate Professor, Departments of Orthopaedic Surgery and Rehabilitation and Pathology, Vanderbilt University School of Medicine, Nashville, Tennessee

**David N. Shapiro, M.D.**

Associate Professor, Department of Pediatrics, University of Tennessee, Memphis, College of Medicine; Associate Member, Departments of Hematology/Oncology and Experimental Oncology, St. Jude's Children's Research Hospital, Memphis, Tennessee

**Joan Rankin Shapiro, Ph.D.**

Director, Neuro-Oncology Research, Division of Neurology, Barrow Neurological Institute, St. Joseph's Hospital and Medical Center, Phoenix, Arizona

**William R. Shapiro, M.D.**

Chairman, Division of Neurology, Kemper and Ethel Marley Chair in Neurology, Barrow Neurological Institute, St. Joseph's Hospital and Medical Center, Phoenix, Arizona

**Anne P. Shapter, M.D.**

Fellow, Division of Gynecologic Oncology, Department of Obstetrics and Gynecology, University of California, Los Angeles, UCLA School of Medicine, Los Angeles, California



**Daniel G. Sheahan, M.B., M.Sc.**

Professor and Director, Division of Anatomic Pathology, Department of Pathology, Wayne State University School of Medicine; Director, Anatomic Pathology, Harper Hospital, Detroit, Michigan

**Vivian R. Sheidler, M.S., R.N.**

Research Associate, The Johns Hopkins University School of Medicine; Clinical Nurse Specialist, The Johns Hopkins Oncology Center, Baltimore, Maryland

**Frances A. Shepherd, M.D., F.R.C.P.(C)**

Professor, Department of Medicine, University of Toronto Faculty of Medicine; Director, Medical Oncology, The Toronto Hospital, Toronto, Ontario, Canada; Chairman, Lung Cancer Site Committee, National Cancer Institute of Canada Clinical Trials Group, Kingston, Ontario, Canada

**Jonathan W. Simons, M.D.**

Assistant Professor, Departments of Urology and Oncology, The Johns Hopkins University School of Medicine, Baltimore, Maryland

**Donald G. Skinner, M.D.**

Professor and Chairman, Department of Urology, University of Southern California School of Medicine. Director, Medical Oncology, USC/ Kenneth Norris Jr. Comprehensive Cancer Center, Los Angeles, California

**Eric J. Small, M.D.**

Assistant Clinical Professor, Department of Medicine, University of California, San Francisco, School of Medicine; UCSF/ Mt. Zion Cancer Center, San Francisco, California

**Elizabeth D. Smith, D.S.W.**

Psychosocial Research Coordinator, Department of Patient and Family Services, The Johns Hopkins Oncology Center, Baltimore, Maryland

**Thomas J. Smith, M.D.**

Assistant Professor, Departments of Medicine and Health Administration, Massey Cancer Center, Virginia Commonwealth University Medical College of Virginia School of Medicine, Richmond, Virginia

**Bruce R. Smoller, M.D.**

Associate Professor, Department of Dermatology and Pathology, Stanford University School of Medicine; Director

of Dermatopathology, Stanford University Hospital, Stanford, California

**Wiley W. Souba, M.D., Sc.D.**

Professor, Department of Surgery, Harvard Medical School; Chief, Division of Surgical Oncology, Massachusetts General Hospital, Boston, Massachusetts

**James L. Speyer, M.D.**

Professor, Division of Oncology, Department of Medicine, New York University School of Medicine; Program Director, Clinical Oncology Research Program, Rita and Stanley Kaplan Cancer Center, New York, New York

**James R. Stewart, M.D.**

Associate Professor, Division of Surgical Oncology, Department of Cardiac and Thoracic Surgery, Vanderbilt University School of Medicine, Nashville, Tennessee

**James Stone, M.D.**

Assistant Professor, Department of Surgery, Stanford University School of Medicine; Stanford Cancer Center, Stanford, California

**Richard M. Stone, M.D.**

Assistant Professor, Department of Medicine, Harvard Medical School; Associate Physician, Division of Cancer Pharmacology, Department of Medicine, Dana-Farber Cancer Institute, Boston, Massachusetts

**Paul T. Strickland, Ph.D.**

Associate Professor, Division of Occupational Health, Department of Environmental Health Sciences, The Johns Hopkins University School of Hygiene and Public Health, Baltimore, Maryland

**Roger Stupp, M.D.**

Attending Physician, Section of Hematology/Oncology, Department of Medicine, Cantonal Hospital, Davos, Switzerland

**Venil N. Sumantran, Ph.D.**

Research Investigator, Department of Internal Medicine, University of Michigan Medical School, Ann Arbor, Michigan

**Susan N. Swetter, M.D.**

Clinical Instructor, Department of Dermatology, Stanford University School of Medicine, Stanford, California; Assistant

Chief, Dermatology Service, Palo Alto Veterans Affairs Medical Center, Palo Alto, California

**Moshe Talpaz, M.D.**

Professor and Chief, Biologic Studies, Department of Clinical Investigation, Division of Laboratory Medicine, University of Texas M.D. Anderson Cancer Center, Houston, Texas

**Stefano Tarantolo, M.D.**

Assistant Professor, Section of Oncology and Hematology, Department of Internal Medicine, University of Nebraska College of Medicine, Omaha, Nebraska

**James Tate Thigpen, M.D.**

Professor and Director, Division of Oncology, Department of Medicine, University of Mississippi School of Medicine, Jackson, Mississippi

**Frank M. Torti, M.D.**

Director, Comprehensive Cancer Center, Bowman Gray School of Medicine of Wake Forest University, Winston-Salem, North Carolina

**Jeffrey M. Trent, Ph.D.**

Director and Chief, Laboratory of Cancer Genetics, National Center for Human Genome Research, National Institutes of Health, Bethesda, MD

**Donald L. Trump, M.D.**

Professor, Departments of Medicine and Surgery, University of Pittsburgh School of Medicine, Deputy Director for Clinical Investigations, Pittsburgh Cancer Institute, Pittsburgh, Pennsylvania

**Richard S. Tunkel, M.D.**

Assistant Professor, Department of Rehabilitation, Cornell University Medical College; Assistant Attending Physiatrist and Director, Rehabilitation Service, Memorial Sloan-Kettering Cancer Center; Assistant Attending Physiatrist, Department of Rehabilitation Medicine, The New York Hospital-Cornell University Medical Center, New York, New York

**Leo B. Twiggs, M.D.**

Professor and Head, Department of Obstetrics and Gynecology, University of Minnesota Medical School, Minneapolis, Minnesota

**Walter J. Urba, M.D., Ph.D.**

Director of Cancer Research, Earle A. Chiles Research Institute, Providence Medical Center, Portland, Oregon

**Everett E. Vokes, M.D.**

Associate Professor, Section of Hematology/Oncology, Department of Medicine and Department of Radiology and Cellular Oncology, University of Chicago, Division of the Biological Sciences, Pritzker School of Medicine, Chicago, Illinois

**Julie M. Vose, M.D.**

Associate Professor, Section of Oncology and Hematology, Department of Internal Medicine, University of Nebraska College of Medicine, Omaha, Nebraska

**James C. Wade, M.D.**

Professor, Departments of Medicine, Oncology, and Pharmacology, University of Maryland School of Medicine; Head, Section of Infectious Diseases and Microbiology, University of Maryland Cancer Center, Baltimore, Maryland

**Donna L. Walker, M.D.**

Clinical Researcher, Division of Gynecologic Oncology, Department of Obstetrics and Gynecology, University of California, Los Angeles, UCLA School of Medicine, Los Angeles, California

**Russell W. Walker, M.D.**

Director, Pediatric Neuro-Oncology, Division of Neurology, Barrow Neurological Institute, St. Joseph's Hospital and Medical Center, Phoenix, Arizona

**Patrick C. Walsh, M.D.**

David Hall McConnell Professor and Chairman, Department of Urology, The Johns Hopkins University School of Medicine; Chairman, Department of Urology, The James Buchanan Brady Urological Institute, The Johns Hopkins Hospital, Baltimore, Maryland

**Ralph R. Weichselbaum, M.D.**

Harold J. Hines Jr. Professor and Chairman, Department of Radiology and Cellular Oncology, University of Chicago, Division of the Biological Sciences, Pritzker School of Medicine, Maywood, Illinois

**Ronald J. Weigel, M.D., Ph.D.**

Assistant Professor, Department of Surgery, Stanford University School of Medicine, Stanford, California

**Irving L. Weissman, M.D.**

Professor, Laboratory of Experimental Oncology, Department of Pathology, Stanford University School of Medicine, Stanford, California

**Max Wicha, M.D.**

Professor, Department of Internal Medicine, University of Michigan Medical School; Director, University of Michigan Comprehensive Cancer Center, Ann Arbor, Michigan

**John W. Yarbrow, M.D., Ph.D.**

Clinical Professor, Department of Medicine, Southern Illinois University School of Medicine; Director, Regional Cancer Center, Memorial Medical Center, Springfield, Illinois

**James R. Zabor, M.S.W.**

Director, Department of Patient and Family Services, The Johns Hopkins Oncology Center, Baltimore, Maryland

**Michael R. Zaragoza, M.D.**

Staff Urologist, Kent General Hospital, Dover, Delaware

**Theodore F. Zipf, M.D., Ph.D.**

Professor, Department of Pediatrics, Division of Medicine, University of Texas M.D. Anderson Cancer Center, Houston, Texas