

围棋死活辞典

上册

赵治勋 著 吴 仁 译

中国书店出版社



553288

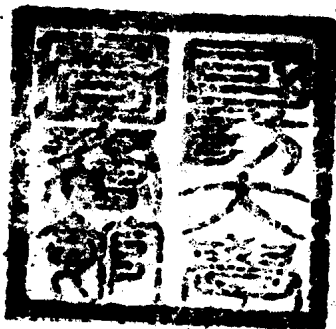
553288-04

赵治勋著
吴仁译

围棋死活辞典

上册

中国青年出版社



前言

上册主要说明死活之形态，从基本型到应用型的一切变化。

本书以「问题式」出题，但不必象解开诘棋一样一一提出正确的答覆，以轻松的心情仔细看下去比较合适。如果看到简单的问题，则考虑一下结果；看到复杂的问题，不必过于动脑筋，直接看一下答案也可以。

把本书放在枕头底下，每晚看一、二页，在思考中自然入睡，也是一个好方法。

出版本书之目的是让大家了解死活的基本观念，花一点时间慢慢看才有意思，一个晚上一口气全部看完，结果什么都不懂，那有什么意思呢？

万事「基本」最为重要，围棋的死活基本简单地说是「眼或二眼的问题，做不出二眼就是死。但大龙做不出二眼时常有，这时就会深深觉得做眼位之不容易，简言之「一眼重于泰山」。如果不重视死活之基本，则是「沙滩上建塔」，很难作广泛的应用。

赵治勋

基本死活之部

目次・索引

第1部 角隅之死活

| | | | | |
|-----|-----|-----|-----|-----|
| 5 | 4 | 3 | 2 | 1 |
| 金柜型 | 木梳型 | 八目型 | 六目型 | 二线型 |
| 199 | 153 | 107 | 61 | 29 |

第2部

边上之死活

1 二线型 241

2 三线型 271

3 四线型 303

239

第3部

死活之应用

1 星位与三三 329

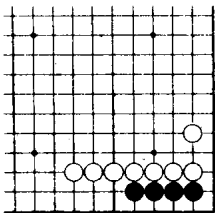
2 各种侵入手法 353

327

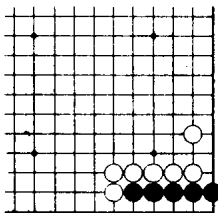
〔第1部〕

角隅之死活

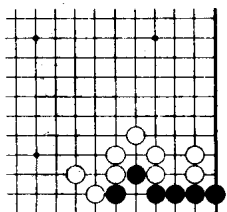
1 二线城市



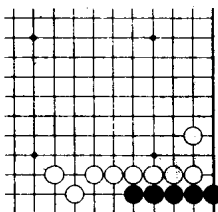
(31)



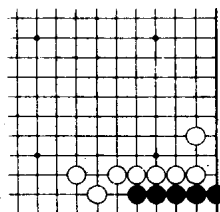
(30)



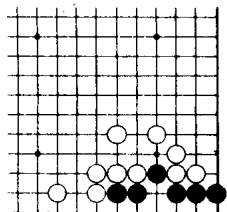
(34)



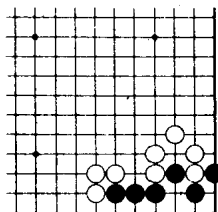
(33)



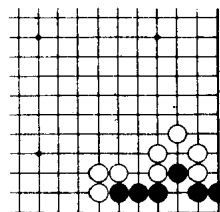
(32)



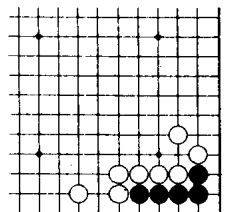
(38)



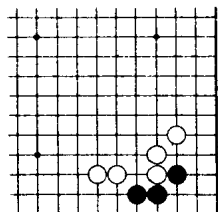
(37)



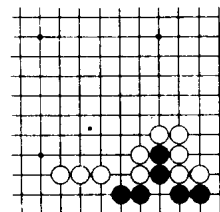
(36)



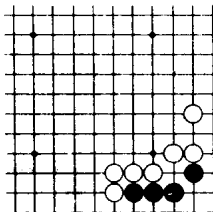
(42)



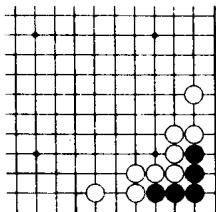
(41)



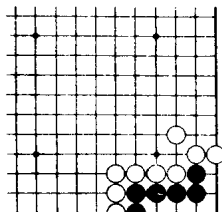
(40)



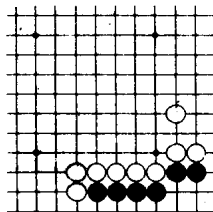
(48)



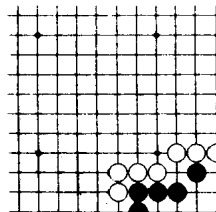
(46)



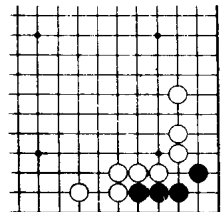
(44)



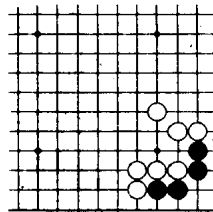
(54)



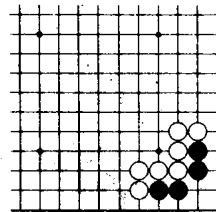
(52)



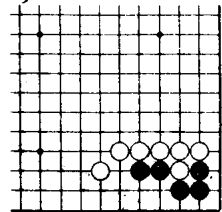
(50)



(57)



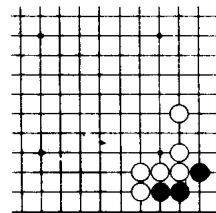
(56)



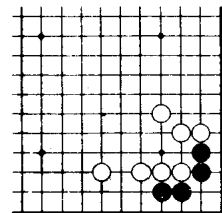
(55)

2

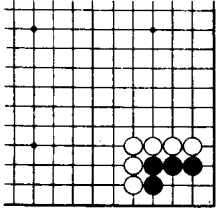
六目型



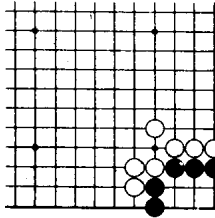
(60)



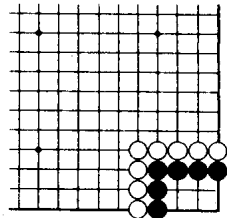
(58)



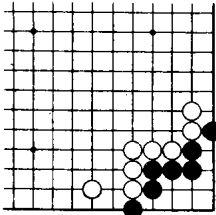
(66)



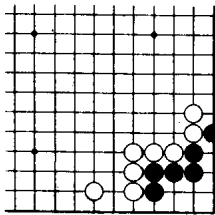
(64)



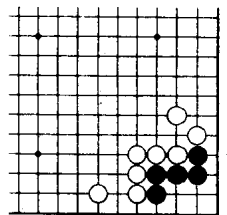
(62)



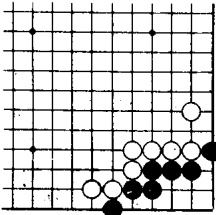
(72)



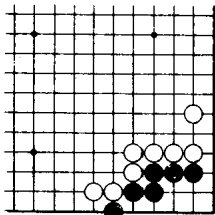
(70)



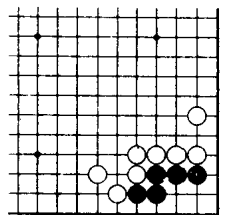
(68)



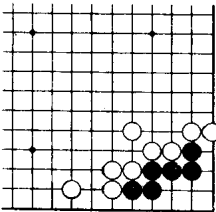
(77)



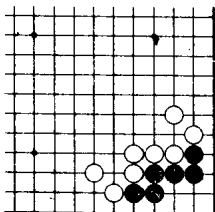
(76)



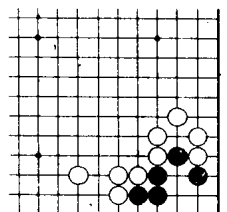
(74)



(82)

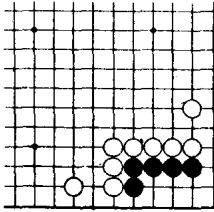


(80)

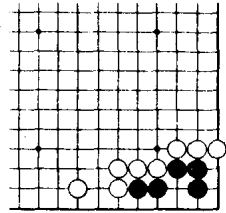


(78)

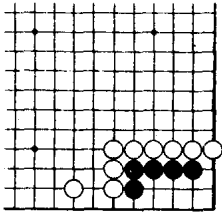
3
八目型



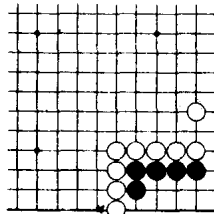
(108)



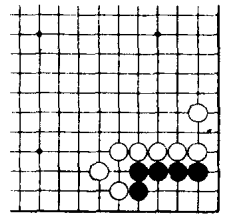
(106)



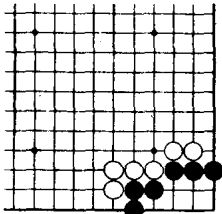
(114)



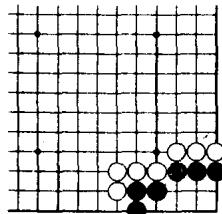
(112)



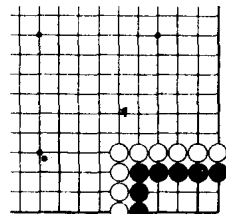
(110)



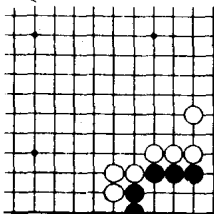
(119)



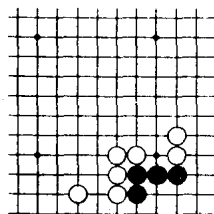
(118)



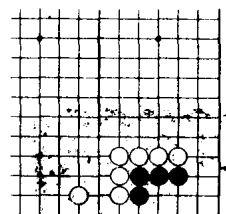
(116)



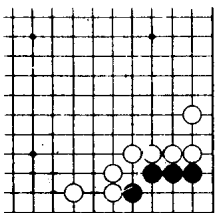
(122)



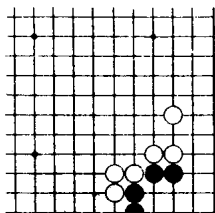
(121)



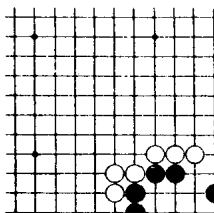
(120)



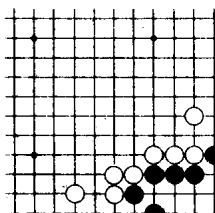
(126)



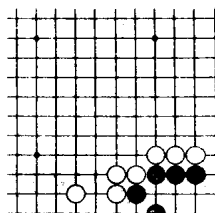
(125)



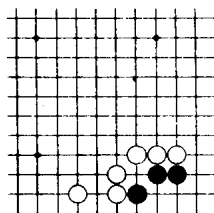
(124)



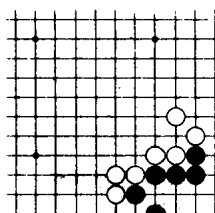
(132)



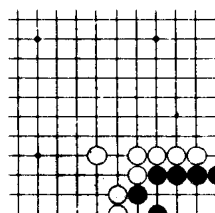
(130)



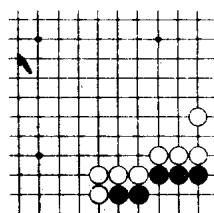
(128)



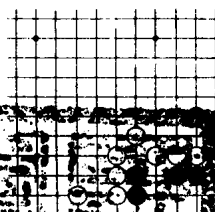
(135)

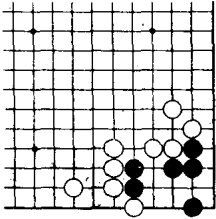


(134)

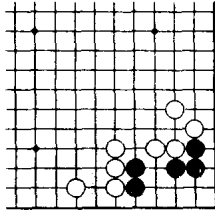


(133)

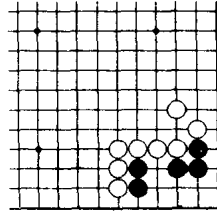




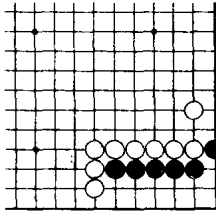
(144)



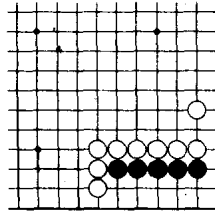
(142)



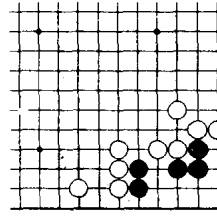
(140)



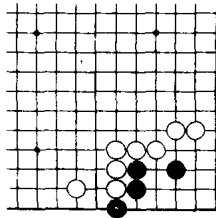
(148)



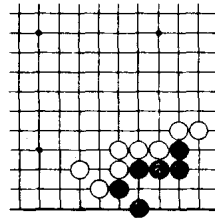
(146)



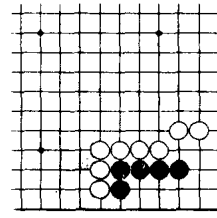
(145)



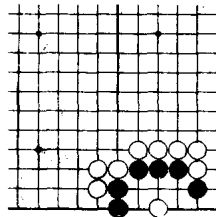
(152)



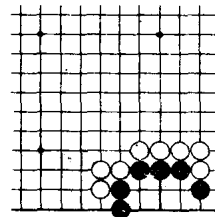
(150)



(149)



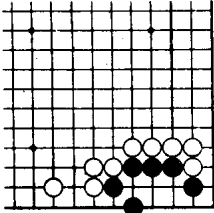
(156)



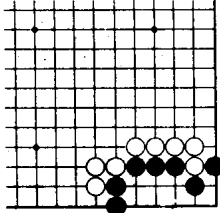
(154)

4

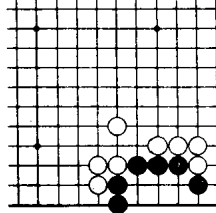
木梳型



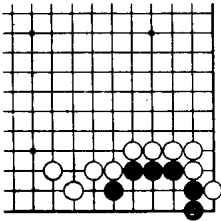
(159)



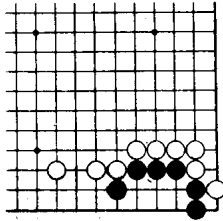
(158)



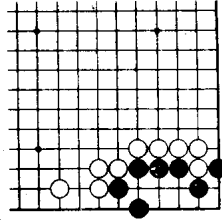
(157)



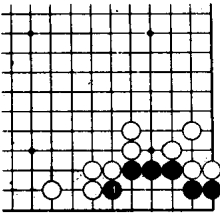
(164)



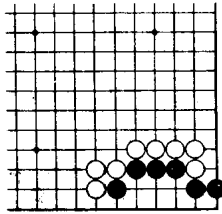
(162)



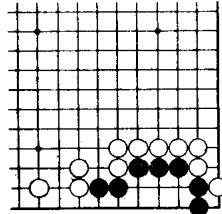
(160)



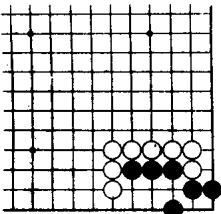
(168)



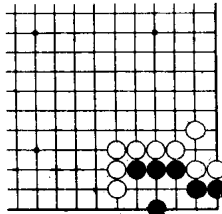
(166)



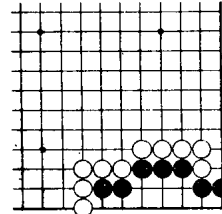
(165)



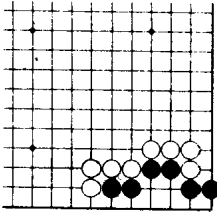
(173)



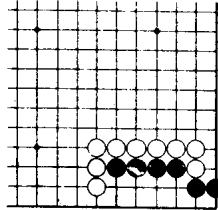
(172)



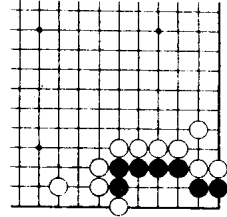
(170)



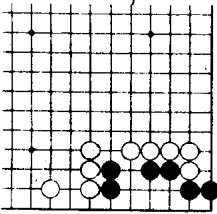
(176)



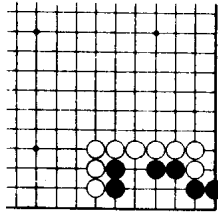
(175)



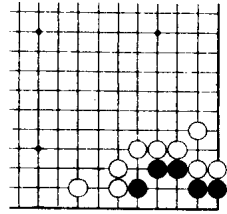
(174)



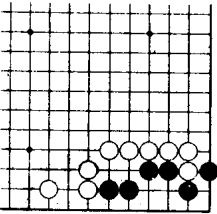
(180)



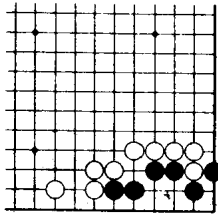
(178)



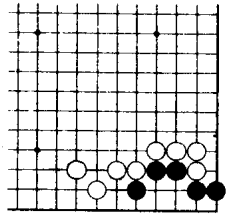
(177)



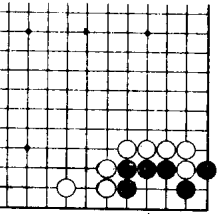
(184)



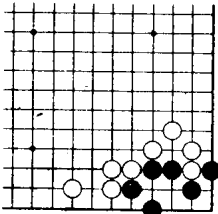
(182)



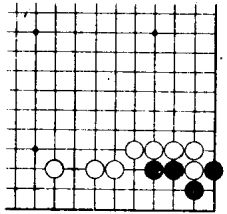
(181)



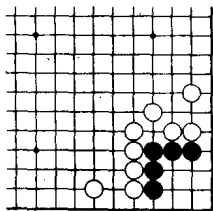
(189)



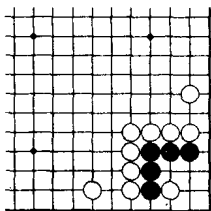
(188)



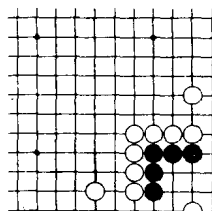
(186)



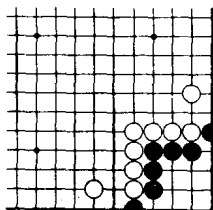
(210)



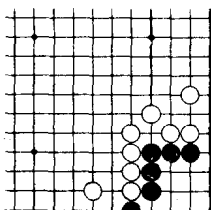
(208)



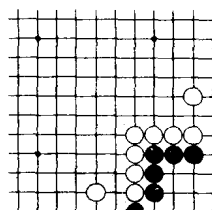
(206)



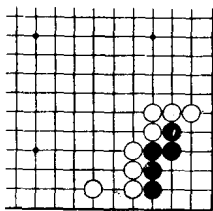
(216)



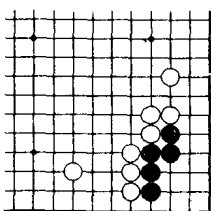
(214)



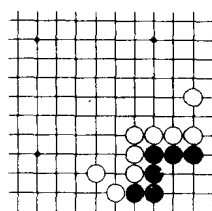
(212)



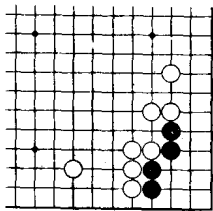
(219)



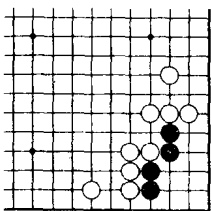
(218)



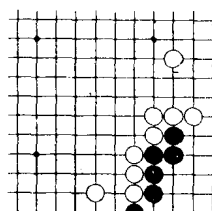
(217)



(224)



(222)



(220)

