

# PINGMIAN SHEJI XILIE

百家大印象

平 / 面 / 设 / 计 / 系 / 列

## 欧美版式设计

OUMEI BANSHI SHEJI

朱天明 主编

Zhu Tianming Zhubian

百 家 出 版 社  
BAIJIACHUBANSHE

欧美版式设计



4

平面设计系列  
PINGMIAN SHEJI XILIE

百家大印象

TS881-64

1

:2(4)

OUMEI  
BANSHI  
SHEJI

欧美版式设计

朱天明 主编

北方工业大学图书馆



00489952

and quality.

Over the years kings and queens, sultans, emperors and sultans have selected Wedgwood for their tables. Today, collectors and buyers of Wedgwood include the rich and famous throughout the world as well as thousands who cherish and value the distinctive quality that marks Wedgwood as the foremost pottery brand.



The Wedgwood Story is like no other factory visit. It is a rare and valuable exhibit tracing the history of the company but you will experience the process from raw clay to throwing, firing, and decorating. You will see the potter's wheel!

told through film, exhibits and you will watch potters and be taken into the factory itself to see the latest technology and design techniques used in the 18th century.

Technology



world's finest factory tour.

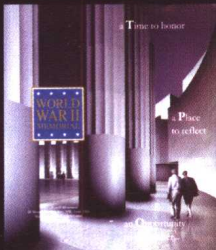
BAIJIACHUBANSHE

百家出版社

平面设计中的创意表现：从抽象思维到形象思维，对于设计者来说，无疑是一种飞跃。表达意念的视野、构图和色彩的处理，是再现艺术家灵魂的视觉语言。而设计中的空间想象和超时代的灵感，也许可以从优秀的作品中获得。

▶▶ W HY TMZDS 朱天明





伦敦，作为世界广告业中心，其在平面设计理念上的领先成就，着实令世人瞩目。这里荟集了一大批欧美出类拔萃的平面设计艺术家，他们的设计作品：在构图的表现上，创意新颖；在色彩的应用上，大胆活泼；在字体的选择上，稳中有变；在图片的处理上，细腻清晰；在表现技巧上，风格各异。几乎达到令人无法挑剔之程度。

当有幸身临其境感受这一切时，兴奋之余，忽然产生了这样的念头，如果能把欧美各种平面设计风格介绍给国内同行，那无疑是一件极有意义的事。于是，我便收集了大量的相关作品，回国后又进行了细致的整理和遴选，汇编成册。

艺术是没有国界的。相信这些小册子能给我们带来一种审美的享受和创新的启迪。

需要说明的是：这些平面设计作品的收集和拍摄，均来自美术馆、旅游点、商店和户外随意免费索取处。对于这些不知名设计师们的艺术作品所带给我们的艺术享受和创作灵感，在此表示真诚的感谢。



# Wimbledon theatre

The Broadway  
London SW19 1QG

Box Office: **020 8540 0362**

OPENING HOURS: 10am - 8pm (Mon - Sat)  
& 10am - 6pm (non performance days).

## Snow White & the Seven Dwarfs

### BLUE PERFORMANCES

£10.00, £13.50, £15.00, £16.50

No discounts or concessions except Early Bookers offer.

### RED PERFORMANCES

£10.00, £13.50, £15.00, £16.50.

Discounts: Children (under 16) £9.50 all seats.

Students, Unemployed, PWD, +60's.

Stage Pass £2.00 Off top three prices.

Groups of 10+ £13.50, Groups of 20+ £12.50.

Groups of 40+ £11.50, Groups of 60+ £10.50.

### GREEN PERFORMANCES

Prices and discounts as per Red performances

and in addition + 60's £9.50 all seats.

School Groups £6.50 all seats

+1 teacher FREE for every 10 children.

### EARLY BOOKERS OFFER

£1.50 Off all full price seats booked and paid for  
by 1st September 2000.

(This does not apply to any discounted seat).

DISCOUNTS Only one discount applies per ticket and are subject to availability.

**talentspot.com**  
Got talent? We want it  
[www.talentspot.com](http://www.talentspot.com)

### 2000

Friday	8 December		7.00
Saturday	9 December	2.00	7.00
Sunday	10 December	3.00	6.30

Monday	11 December	No Performances	
Tuesday	12 December	2.00	7.00
Wednesday	13 December	2.00	7.00
Thursday	14 December	2.00	7.00
Friday	15 December		7.00
Saturday	16 December	2.00	7.00
Sunday	17 December	3.00	6.30

Monday	18 December	No Performances	
Tuesday	19 December	2.00	7.00
Wednesday	20 December	2.00	7.00
Thursday	21 December	2.00	7.00
Friday	22 December		7.00
Saturday	23 December	2.00	7.00
Sunday	24 December	3.00	

Monday	25 December	Christmas Day - Closed	
Tuesday	26 December	2.00	7.00
Wednesday	27 December	2.00	7.00
Thursday	28 December	2.00	7.00
Friday	29 December	2.00	7.00
Saturday	30 December	2.00	7.00
Sunday	31 December	3.00	

### 2001

Monday	1 January	New Years Day - Closed	
Tuesday	2 January	2.00	7.00
Wednesday	3 January		7.00
Thursday	4 January	2.00	7.00
Friday	5 January		7.00
Saturday	6 January	2.00	7.00
Sunday	7 January	3.00	6.30

Monday	8 January	No Performances	
Tuesday	9 January		7.00
Wednesday	10 January	2.00	7.00
Thursday	11 January	2.00	7.00
Friday	12 January		7.00
Saturday	13 January	2.00	7.00
Sunday	14 January	3.00	

Monday	15 January	No Performances	
Tuesday	16 January		7.00
Wednesday	17 January	2.00	7.00
Thursday	18 January	2.00	7.00
Friday	19 January		7.00
Saturday	20 January	2.00	7.00
Sunday	21 January	3.00	





### COX'S CAVE

Brilliant colours and fantastic shapes, painted and sculpted by Nature.



### THE CRYSTAL QUEST

Challenge the Dragon and save the world in this underground fantasy adventure.

### JACOB'S LADDER AND LOOKOUT TOWER

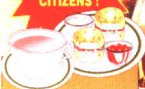
Fantastic views across Somerset – but you've got to climb to get to them!



### CLIFFTOP GORGE WALK

A 3½ mile round-trip clifftop walk through a special conservation area. Bring a picnic, and ask our Guides for a route map! Dogs are welcome.

We've got a SPECIAL OFFER for SENIOR CITIZENS!



Stroll around spectacular **GOUGH'S CAVE**, then sit down and enjoy a **CREAM TEA** (or equivalent) in **GOUGH'S TEA ROOM**. Ask our Guides for details.



**Are you a Teacher ?  
Do you run a Scout Troop  
or Youth Group, or have  
Overseas Students visiting ?**

Ask at the Showcaves Office about how we can help you.

Like more information? Just call us on 01934 742343 (Fax 01934 744637)

Cheddar Showcaves & Gorge  
Cheddar Somerset BS27 3QF





### The Orient Espresso

51 Borough High Street.

Built in 1997 to help cope with demand, this hostel has 36 beds and it's own Coffee Shop on the ground floor. This is an unlicensed premises and can be considered suitable for school parties, educational groups and touring sports teams. Two bedded tutor/group leader rooms are available. Coach parking is nearby by prior arrangement.



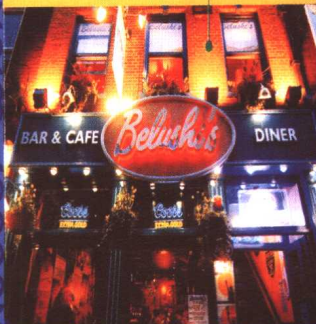
### Group Bookings

- Full and half board accommodation
- Meeting rooms available
- Itinerary adviser service
- Full flexibility on accommodation requests
- Tour arrangement

### St. Christopher's Village

181 Borough High Street.

Our latest and largest hostel complex, it boasts 150 bedrooms, saunas, hot tub, solarium, Juice Bar, central booking office, laundry and main reception. The pub is a newly designed Belush's bar with excellent food, big screen TV for sporting events and will be one of the South Bank's best loved venues. We also have a resident's lounge which is fitted out as a night club, and you can be assured of some great hostel parties during your stay here!



### Finding Borough High Street...

Jubilee/Northern Line

Borough & London Bridge stations.

Also Thameslink and main service at London Bridge.

Direct train links from all major airports & only 10 minutes walk from Eurostar.

## Barrow Bridge Village

A small picturesque model village created during the industrial revolution. The '63 steps,' built to help workers climb the hill to the mill, now give walkers access to the local moors. Heritage Trail available from Bolton Ticket and Information Centre.

**Further Information: Bolton TIC**



## Firwood Fold

A picturesque collection of former farm buildings, most of which date from the 17th century. No 10, the only remaining thatched cottage in the row, was the birthplace of Samuel Crompton, inventor of the Spinning Mule in 1779.

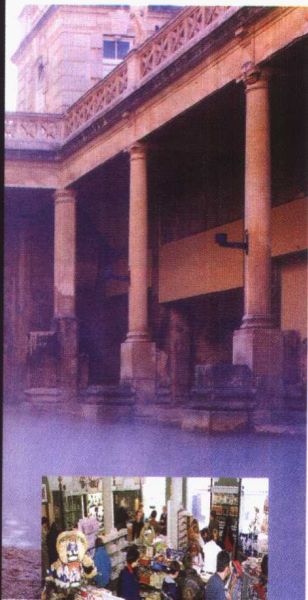
**Further Information: Bolton TIC**





### THE MUSEUM

View treasures offered to the goddess. See carvings from the classical temple, inscriptions and sculptures revealing the lives of the people of Aquae Sulis - priests, soldiers, local people and pilgrims from across the empire.



### MUSEUM SHOPS

Remember your visit with a special gift from our extensive range of quality merchandise, including a full colour guide book of the Roman Baths.

### THE ROMAN BATHS

Walk where Romans walked on ancient stone pavements around the steaming pool. Imagine the grandeur of the bathhouse which stood on these massive remains.



## THE *Roman Baths*

Discover the site of Britain's only  
natural hot spring -  
bringing health and vitality to Bath  
for over 2,000 years.

### OPENING TIMES

Open daily:	October-March	09.30-17.00
	April-September	09.00-18.00
	August	09.00-18.00
	Torchlit visits on August evenings	20.00-22.00
	Closed 25 and 26 December	

# BILL WYMAN'S

# RYTHM KINGS

Featuring: Gregge Fane • Gary Booker • Albert Lee  
Terry Taylor • Henry Spence • Beverly Skeete  
Janice Hoyt • Nick Payne • Frank Mead

Introduced by Paul Jones

with special guest **ERIC BIBB** and his musicians Dave Brown and Steve Simpson

Thursday 25th May

**BBC**  
*Music Live*  
25-26 May 2000

Part of this concert  
will be broadcast  
live on BBC Radio 2  
as part of  
BBC Music Live



New Recordings  
*Rhythm Kings  
Groovin'*  
Eric Bibb  
Roadworks

## Theatre Information

The Beck Theatre, Grange Road, Hayes, Middlesex UB3 2UE

Admin: 020 8561 7506 Box Office: 020 8561 8371

### HOW TO BOOK

The Box Office is open from Monday to Saturday from 10.00am - 6.00pm on non performance days and 10.00am-8.00pm on performance days, and from 10.30am for telephone bookings. On Sundays we open one hour before a performance is due to commence.

### RESERVATIONS

We are happy to hold tickets for up to three days if you wish to book by telephone but pay by cash or cheque. On certain shows the reservation time will be shorter due to public demand. Most of our shows offer discounts for OAPs, students, unemployed and groups of over 10 people. It always pays to ask the Box Office when you book!

### PAYMENT

We will accept payment by cash, debit/credit card or by cheque payable to Apollo Leisure UK Ltd.

### REFUNDS & EXCHANGE

Once you have paid for your tickets, we regret they cannot be exchanged or refunded.

### FACILITIES FOR THE DISABLED

A number of wheelchair spaces are available at all performances. We have level access throughout the theatre, and there is an induction loop for the hard of hearing. Theatre awarded Hillingdon Access Award 1997 & 1999 in recognition of service and access to people with disabilities.

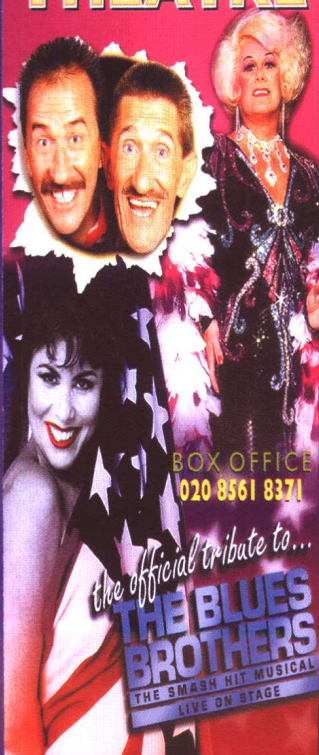
### CHILDREN

Booster seats for youngsters are available free of charge (small deposit required) from the refreshments kiosk, which is open before, during and after every performance.

For more information on weddings & corporate hospitality, call us on 020 8561 7506.

FOR PLEASE NOTE: MOST SHOWS WILL CARRY A NOMINAL BOOKING OR CREDIT CARD FEE

# THE MAY - JULY 2000 BECK THEATRE



BOX OFFICE  
020 8561 8371

the official tribute to...  
**THE BLUES BROTHERS**  
THE SMASH HIT MUSICAL  
LIVE ON STAGE

GRANGE ROAD, HAYES, MIDDLESEX UB3 2UE



has to offer - a city steeped in commerce and maritime endeavours for nearly two millennia. In the guide you will find full details of the diverse range of tourist attractions in and



around the city, the vast array of restaurants and cafes, parks and gardens and details of the many shopping areas we have to offer. So please make full use of the guide and I do hope you have a wonderful time in our city.



*Barry Moorshead*

**Barry Moorshead**  
Chairperson, Bristol Tourist  
Attractions Association







**ENTRANCE PLAZA** Entrance No.1, Crazy Golf (60p a round), 9 Hole Golf (60p a round), Coach Park, Caravan Site, Security Lodge, Park Inn, Self-Service Cafeteria, Tower Suite, Hamilton Suite for bar meals and lunches, TOILETS



**AERIAL PARK** Entrance No.2, NEW FOR 2000 - APOCALYPSE Ride Photography, The Haunting, Haunting Shop, Skyliner, Big Wheel, Flying Dutchman, Cine 180 (see notice board for show times), NEW FOR 2000 - GOLDEN NUGGETS WILD WEST SHOOT OUT, Souvenir Shop, Buffalo Coaster, Sambaero, Drayton Queen Boat, Cedar Cantina, International Cafe Bar, TOILETS



**CENTRAL PLAZA** NEW FOR 2000 - WALDO'S LAKESIDE ARENA with live entertainment, Zoo entrance, Toy Shop, Games Booths, Lakeside Tea Shop and Show, Hot Dogs, Donuts, Pick 'n' Mix Sweet Shop, Meeting Point, Guest Services



**PIRATE COVE** Pirate Adventure, Rory's Adventure Safari, Dogdome, Jolly Buccaneer, The Crypt, Pirate Raft Ride, Buccaneer Burger Bar & indoor seating area



**FISHERMAN'S WHARF** Stormforce 10, Polperna Express railway, Carousel, Games Booths, Pick 'n' Mix, Penny Arcade, Hornblower's Pasties & Hot Dogs, Trekmay's Cornish ice creams, Dolphin Shop, Aqua Shark Photo Point



**ACTION PARK** Entrance No.3 & 4, Shockwave, Splash Canyon Rapids, Black Revolver, Klondike, Old Mine Coaster, Flying Jumbos, Tea Cups, Pirate Ship, Games Booths, Ride Photography, Miner's Chicken Diner, Food Kiosks, cloakroom, TOILETS



**ROBINSONS CHILDREN'S CORNER** Carbury's Junior Pirate Ship, Giant Slide, Toy Ride, Junior Carousel, Ladybirds, Vintage Cars, Mini Balloons, Crazy Bus, Super Dragon Roller Coaster, Frog Hopper, Whirly Copter Wheel, Quick Bite kiosk, Treasure Trove Shop, train (to the zoo, farm and museums), TOILETS



**THE ZOO** See Zoo notice board for feeding times, Reptile, Small Mammal & Insect Houses, Dinosaurland (40p admission charge), NEW Lion House, Falconry Displays (Weekends), NEW FOR 2000 - PARROT WALK, Garden Shopping Centre, Safari Coffee Shop, Aunt Jane's Giant Ice Cream Cones, Quick Bite kiosk, TOILETS



**FARM & MUSEUMS** Farm with rare breeds, Peelers Tea Room, museums showing slot machines and the Peel History of Drayton Manor, train (to Robinsons Children's Corner), TOILETS

### Special needs/disabled facilities.

Please refer to our new ride signs for care and difficulty rating:

Very difficult



Medium difficulty



Easy with help



The manufacturers of our rides, together with the Health & Safety Executive, have advised us on all the ride restrictions.

The management reserves the right to change without notice the information and prices contained in this brochure. Limited opening times may operate in September and October - please call for details. Visitors are recommended to be technical, operational, weather or other reasons. ATTY facility or ride may be closed, reserved, altered, under repair or unavailable at ANY time. NO REFUNDS WILL BE GIVEN FOR ANY REASON.



interesting and fun for visitors of all ages. **Tamworth on the Move** a short slide show, gives a fascinating insight into local transport since the Norman Conquest.

Tamworth Castle overlooks an attractive park with floral terraces and children's adventure playground.

*Special events take place throughout the year, many at Bank Holiday weekends. Concerts, recitals and plays are also performed in the Great Hall. Children's workshops are held during most school holidays.*



### Facilities:

Baby changing facility. Public seating throughout. Shop sells sweets, film and a range of souvenirs. Publications include guidebook and activity guide for children. Free admission to shop only. Great Hall available for corporate functions or private hire.



### Schools:

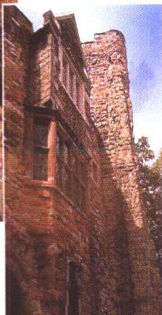
Pre-booked groups from schools especially welcome. Castle ideal for cross-curriculum study. Free visits by teachers to plan ahead encouraged. Education & Access Officer can advise on school/college work. Teachers' resource packs available. Schools' workshops held throughout the year.

### Groups:

Discounts available for groups (10 or more during daytime, 20 or more during exclusive evening visits). Light refreshments for evening groups available on request. Tour guides can be booked in advance.

### Castle Friends:

Why not join and help with stewarding, guiding, events and exhibitions? Membership details available from Reception.





# The choice is yours...

## Rest and Relaxation in restful countryside.....



The rich green countryside of The South of England from Dorset to Kent and Wiltshire & Oxfordshire to Hampshire and the Isle of Wight, provide idyllic environments in which to escape from it all.



## Lively exciting cities and towns....

The South of England has an abundance of lively exciting cities and towns. From world-famous cities like Canterbury, Winchester and Salisbury, to towns like Bournemouth (probably the best centre for night life in the South of England) and also the towns along the River Thames.



## Plus one of these titles...

### EASY TUTOR



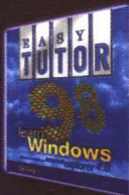
#### EASYTUTOR™ LEARN COMPUTING

An interactive, easy-to-use package specifically designed to teach the novice user about the fundamentals of personal computing.



#### EASYTUTOR™ LEARN WINDOWS® 98

Using the highly acclaimed Intelligent Learning Technology™, getting to grips with the new Windows® 98 Operating System couldn't be easier. In fact, with interactive quizzes and in-depth content, you can learn at your own pace.



#### EASYTUTOR™ LEARN OFFICE™ 97

Gain hands-on experience of using all the new features of Office™ 97 in a fully simulated environment, using multimedia developed by industry experts.

**EASYTUTOR™ LEARN FOREIGN LANGUAGES** With 12 languages on one CD-ROM, this title will help you learn pronunciation, grammar and sentence-building in record time.

## Plus one of these titles...

### EA ELECTRONIC ARTS



#### THE SIMPSONS™ VIRTUAL

**SPRINGFIELD™** Run loose in the streets of Springfield! With hundreds of action sequences and more than 35,000 frames of original animation, Simpsons fans will feel right at home.



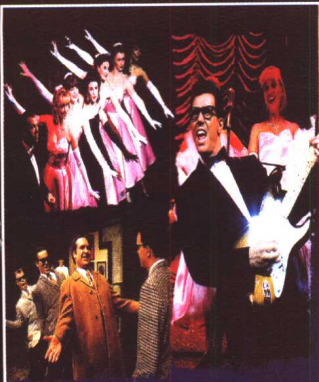
**PGA TOUR® PRO** Pit your putting skills to the test whether playing others across the Internet or against 14 PGA TOUR® pros on your computer.



**DUNGEON KEEPER** Expand your empire of evil monsters from a hole in the ground into a subterranean network of chambers and corridors. (This game is suitable only for adults over the age of 18.)



**NEED FOR SPEED II** Feel the speed of an all-new 3D graphical engine as you race some of the fastest cars in the world. Arcade option turns up the powerslides and car handling.



PAUL ELLIOTT

with

LAURIE MANSFIELD (FOR INTERNATIONAL ARTISTES)

and GREG SMITH  
present

# Buddy

The  
BUDDY HOLLY  
Story  
.....

Written by  
ALAN JANES

Directed by  
ROB BETTINSON

Designed by  
ANDY WALMSLEY

Costumes by  
BILL BUTLER

Lighting by  
GRAHAM McLUSKY

Sound Designed by  
RICK PRICE

Musical Consultant  
BRUCE WELCH

Musical Director  
PAUL JURY

From an original idea by LAURIE MANSFIELD  
Additional material by ROB BETTINSON

Originally produced at THE PLYMOUTH THEATRE ROYAL, ENGLAND

## BOOKING INFORMATION

BOX OFFICE & CREDIT CARDS (NO BOOKING FEES):

**020 7930 8800**

e-mail: [buddy@trh.co.uk](mailto:buddy@trh.co.uk)

CREDIT CARDS (NO BOOKING FEES):

**020 7344 4444 • 020 7420 0000**

## Performance Times

Monday - Thursday 8.00pm

Friday 5.30pm & 8.30pm

Saturday 5.00pm & 8.30pm

## Ticket Prices

Monday to Thursday evenings

Stalls & Dress Circle £30.00, £27.50.

Grand Circle £20.50, £17.50. Upper Circle £10.00.

Restricted view tickets: £10.00 available from Box Office only.

THE FAMOUS 1/2 PRICE Friday Matinees (5.30pm)

Stalls & Dress Circle £16.25, £14.75.

Grand Circle £11.75, £10.50. Upper Circle £6.75.

Restricted view tickets: £6.75 available from Box Office only.

Friday evenings & Saturday both performances

Stalls & Dress Circle £32.50, £29.50

Grand Circle £23.50, £21.00. Upper Circle £13.50.

Restricted view tickets: £13.50 available from Box Office only.

## Groups

There are substantial discounts for groups of 15 or more for all performances excluding Friday matinees and Saturday evenings.

Student & Senior Citizens rates also available.

For further details please call: 020 7379 5062

# Rave On!

## STRAND THEATRE

ALDWYCH, LONDON WC2

website: [www.buddythemusical.com](http://www.buddythemusical.com)

NEAREST UNDERGROUND STATIONS: Covent Garden and Charing Cross

Proximity Schwartz Ltd 01753 610000







16

# AHOY, SHIPMATES

There's a whole lot of swashbuckling fun going on out there on the high seas at Pirate Cove.



Kiddies rides galore at  
Robinsons Children's Corner.