

供全日制普通高级中学使用

高中英语阅读

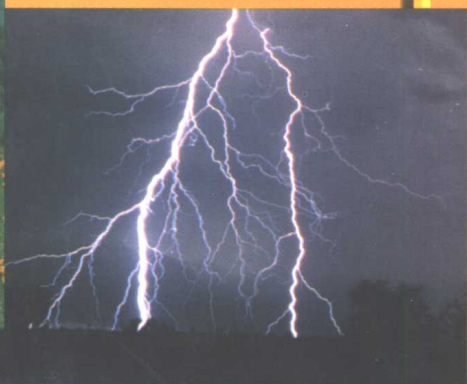
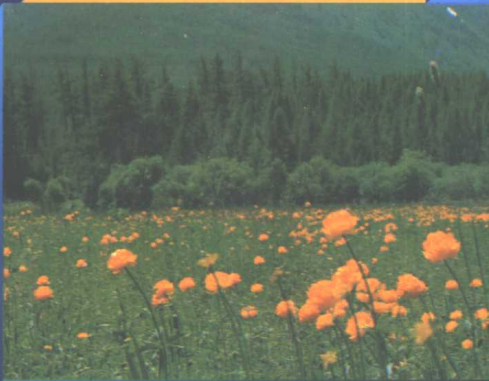
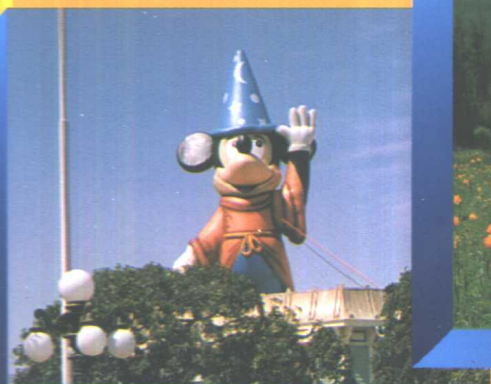
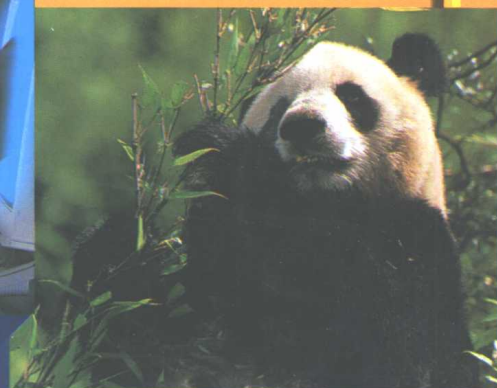
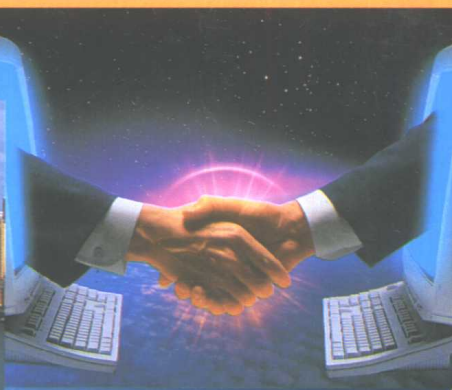
供高中二年级第一学期使用

第二册 (上)

学生用书

Senior English Reader

Student's Book 2A



SUSAN MARTIN

SERIES EDITOR: Nicholas Sampson



上海外语教育出版社



Macmillan Publishers

供全日制普通高级中学使用

高中英语阅读

供高中二年级第一学期使用

第二册（上）

学生用书

Senior English Reader

Student's Book 2A

Susan Martin

SERIES EDITOR: Nicholas Sampson



上海外语教育出版社

外教社



MACMILLAN

图书在版编目(CIP)数据

高中英语阅读 / (英) 马丁编. —上海: 上海外语教育出版社, 2000

学生用书. 供高中二年级第一学期使用

ISBN 7-81046-917-7

I. 高… II. 马… III. 英语课-阅读教学-高中-教学参考资料 IV. G634.413

中国版本图书馆CIP数据核字(2000)第38925号

图字: 09-1998-169号

出版发行: 上海外语教育出版社

麦克米伦出版(中国)有限公司

(上海外国语大学内) 邮编: 200083

电话: 021-65425300 (总机), 65422031 (发行部)

电子邮箱: bookinfo@sflep.com.cn

网址: <http://www.sflep.com.cn> <http://www.sflep.com>

责任编辑: 韩天霖

插图绘制: 周哲夏

印刷: 上海长阳印刷厂

经销: 新华书店上海发行所

开本: 787×1092 1/16 印张 10.75 字数 220 千字

版次: 2000年8月第1版 2001年9月第5次印刷

印数: 20 000 册

书号: ISBN 7-81046-917-7 / G · 961

定价: 12.30 元

本版图书如有印装质量问题, 可向本社调换

前言

改革开放以来，我国的中学英语教学水平不断提高，具体表现在广大中学英语教师的教学水平和广大中学生英语听、说、读、写能力的不断提高上。然而，按照现行中学英语教学大纲的要求编写的主干英语教材给学生提供的阅读、词汇及练习量已远远无法满足中学英语教学和广大学生学习英语的需要，而能系统、全面地帮助广大学生扩大词汇量、提高阅读能力的优质出版物则更是凤毛麟角。故而编写一套既符合和体现大纲的教学要求又能在现行教材的基础上提高一步的中学英语教材，特别是英语阅读教材，便成了广大中学英语教师和出版者的当务之急。基于这种需要，经过精心策划和设计，我社与麦克米伦出版（中国）有限公司密切合作，联手推出了展现在大家面前的这套《高中英语阅读》教材。

本教材主要有以下特点：

1. 严格按照现行中学英语教学大纲的要求编写，并在此基础上适当提高难度，增加词汇量；
2. 密切配合现行高中英语教材，选收的阅读文章的主题与教材主题相近或相关，可以用作课本的扩充和提高；
3. 每课提供两篇阅读文章，文章难度和词汇要求与现行教材相当并略有提高和增加。每篇阅读文章后配以形式多样、设计合理的阅读理解练习和词汇练习，帮助学生巩固语言知识、加强对词汇的掌握；
4. 每一册书后还附有十篇补充阅读文章和练习，最后还配有英汉双解的全书总词汇表；
5. 整套教材由英国、美国和澳大利亚等地的资深教师和作者参与编写，语言纯正地道，内容新鲜活泼，选材科学合理；
6. 教材各册配有教师用书，收录各册全部内容并提供所有练习的参考答案，使教与学更为方便有效。

《高中英语阅读》全套教材由六册学生用书组成，每学期一册，供各校高中阶段配合现行主教材使用或补充教学量选用。本册为《高中英语阅读》第二册（上）学生用书，供高中二年级第一学期使用。配套教师用书可供教师参考使用或学生自学用。本教材也可供广大青少年业余学习英语用。

上海外语教育出版社

2000年2月

Contents

Unit 1	Disneyland	1
Unit 2	Alcohol	9
Unit 3	Body Language	17
Unit 4	Newspapers	25
Unit 5	Marilyn Monroe	33
Unit 6	Revision	41
Unit 7	Australia	49
Unit 8	Rules and Safety	57
Unit 9	Saving the Earth	65
Unit 10	At the Shop	73
Unit 11	Weather	81
Unit 12	Revision	89
Additional Passage A Mickey Mouse		97
Additional Passage B Always Coca-Cola		101
Additional Passage C Animal Communication		105
Additional Passage D Crosswords		109
Additional Passage E Dear Diary ...		113
Additional Passage F Australia Today		117
Additional Passage G Welcome Aboard		121
Additional Passage H Endangered Species		125
Additional Passage I Shopping on the Internet		129
Additional Passage J Kew Gardens		133
Glossary		137

UNIT 1 Disneyland

PASSAGE 1

Disneyland Paris

The first Disneyland in Europe was opened in France in 1992. The site is enormous – about 56 hectares in size – and is situated just 32 km east of Paris. At first, it was known as 'Euro Disney', but after some early problems and bad publicity it was renamed 'Disneyland Paris' in 1994. It is now one of the most successful Disney theme parks in the world with up to 70,000 visitors a day during the warm summer months.

5

The park has five different sections called 'lands'. Each land has its own unique and exciting features. The five different lands are called Main Street USA, Adventureland, Frontierland, Fantasyland and Discoveryland.

In Main Street USA, you can experience a typical American town of 100 years ago. There are steam trains at the railroad station, horse-drawn street cars, and parades of jazz bands in the streets. All the shops sell old-fashioned goods and the people wear old-style clothes.

10

In Adventureland, you can find Caribbean pirates and African dancers. The park has also reconstructed some scenes from the film *Indiana Jones and the Temple of Doom* and there is an Indiana Jones ride too! You can also camp with the Swiss Family Robinson in their tree house.

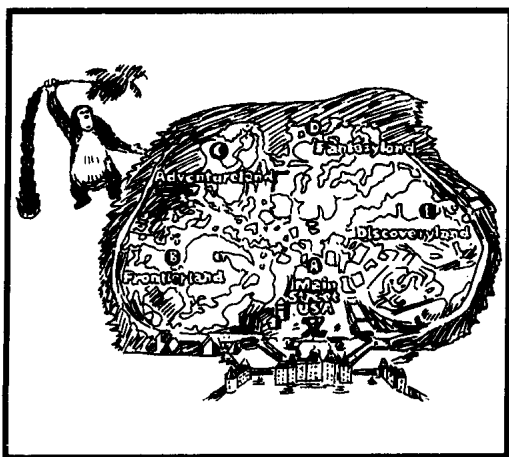
15

Frontierland recreates the American Wild West – there is even a native American village. The most popular attraction here is a scary haunted house called Phantom Manor which has 999 resident ghosts! Each ghost has a secret, but you will have to go into the house to find out what they are!

20

In Fantasyland, you can meet your favourite Disney characters in their own surroundings: Sleeping Beauty in her castle, Dumbo the flying elephant in a circus, and Snow White in the dark forest. You can also enjoy tea with Alice, the Mad Hatter and their friends in Wonderland.

25



The main attraction in Discoveryland is Space Mountain. In Space Mountain, you can go to the moon on a thrilling roller coaster ride – the journey only takes two and a half minutes!

30

After visiting the lands, you can have a meal in one of the many restaurants in the park or you can meet Mickey Mouse, Donald Duck and Pluto. Why not visit Disney Village? In Disney Village you can relax and enjoy the magical surroundings, go shopping or visit a nightclub. For people who would like to stay for more than one day, there are seven hotels. The Newport Bay Club is one of these hotels and is, in fact, the largest hotel in Western Europe.

35

We know that you'll love Disneyland Paris because it has something for everyone. Book your trip of a lifetime now!

40

COMPREHENSION

A Match the attractions with the correct lands. Follow the example.

- | | | |
|-------------------|-------|-----------------------|
| 1 Fantasyland | [b] | a) Space Mountain |
| 2 Frontierland | [] | b) Snow White |
| 3 Adventureland | [] | c) Indiana Jones ride |
| 4 Main Street USA | [] | d) shopping |
| 5 Discoveryland | [] | e) parades |
| 6 Disney Village | [] | f) Phantom Manor |

B Answer the questions. Follow the example.

- 1 What was Disneyland Paris first called?

It was first called Euro Disney.

- 2 Where is the haunted house?

- 3 Who can you drink tea with?

- 4 What can you do in Space Mountain?

- 5 Name three characters you can meet in Disneyland Paris?

6 Where can you visit a nightclub?

C Are the statements true or false? Tick (✓) the boxes. Correct the false statements. Follow the example.

	True	False
1 Disneyland Paris is not very successful.	[]	[✓]
2 Main Street USA shows life in a typical American city today.	[]	[]
3 There are no Caribbean pirates in Adventureland.	[]	[]
4 A few of the ghosts in Phantom Manor have secrets.	[]	[]
5 Newport Bay Club is a large hotel.	[]	[]
6 Disney cartoon characters are all found in the same land.	[]	[]

1 Disneyland Paris is very successful.

VOCABULARY

A Here are some words from the passage. Match the words in Column A with their meanings in Column B. Follow the example.

Column A

1 renamed (line 4)

2 unique (line 7)

3 old-fashioned (line 12)

4 scary (line 19)

5 thrilling (line 32)

6 relax (line 37)

Column B

a) out-of-date

b) only one of a type; very unusual

c) rest

d) given a new name

e) frightening

f) very exciting

B Complete the sentences with words from exercise A. Follow the example.

- 1 Bombay in India was recently renamed Mumbai.
- 2 You look tired. You should _____ more!
- 3 I love driving my car fast. It's so _____.
- 4 I don't like it when you drive so fast. It's very _____.
- 5 This old building is _____. There is nothing else like it.
- 6 Nick doesn't like modern things. He's still using an _____ typewriter.

C Find phrases in the passage which have the same meanings. Use the line numbers to help you. Follow the example.

- | | |
|--|-----------------------------------|
| <p>1 difficult beginning
(lines 1-5 / three words)</p> | <p><u>some early problems</u></p> |
| <p>2 special points of interest
(lines 6-10 / four words)</p> | <p>_____</p> |
| <p>3 place where ghosts live
(lines 16-20 / two words)</p> | <p>_____</p> |
| <p>4 most popular feature
(lines 26-30 / two words)</p> | <p>_____</p> |
| <p>5 variety of choices for people
(lines 40-42 / three words)</p> | <p>_____</p> |
| <p>6 make a reservation for your holiday
(lines 40-42 / three words)</p> | <p>_____</p> |

PASSAGE 2

A Letter to Brenda

Jenny and her family spent a day at Disneyland Paris. Read the letter she wrote to her friend Brenda about her trip.

Dear Brenda,

I have just come back from France. It was the first time I had ever been there. We spent one day at Disneyland Paris. We all had a fantastic time there as it is a very exciting place. I've got lots of news to tell you.

When we arrived in Paris, my brother John was very excited. He wanted to go straight into the park, but my mother told him that he would have to wait until we had checked into the hotel and unpacked our bags. 5

About an hour later, we bought some tickets and John and I ran into the park. There were so many different rides, we didn't know which one to go on first. We all decided to try the horse-drawn streetcar. It took us along a road called Main Street USA. The street is like a traditional American street with old-fashioned shops such as a barber's shop and a saloon bar. There was even a jazz band marching along the street. 10

Next we went to Adventureland. I went to see the Swiss Family Robinson who were having a picnic in their tree house. John went to sing songs with some pirates instead. Before long, we were all hungry so we had lunch in a lovely American restaurant. Mum, Dad and I had hamburger and chips and John had a sandwich. The food was very tasty. 15

After that, we went to Fantasyland. I thought it was great. It was my favourite part of the park. I chatted with Alice in Wonderland and had tea and cakes with the Mad Hatter. John went to see Sleeping Beauty's Castle in the hope of seeing Sleeping Beauty. Unfortunately, she was sleeping so he wasn't able to see her! 20

We decided to go to Discoveryland next. On our way, we saw Mickey Mouse and Donald Duck. They are well-known cartoon characters. They were very big: much bigger than I had imagined. It was late in the afternoon, but we thought we had just enough time to visit Discoveryland when John realized he had lost a button from his shirt. We looked everywhere for the button, but we couldn't find it. When we arrived at the entrance for Discoveryland, there was a big sign on the gate that read 'closed'. We were too late! We were disappointed, but agreed that we had had a wonderful day. 25 30

I hope that we will go back soon.

Write soon!

Love,


Jenny



COMPREHENSION

A Complete the sentences. Circle the letters. Follow the example.

- 1 Jenny's family ...
 - a) had an awful time in Disneyland.
 - b) were very excited about their trip.
 - ☒ c) checked into a hotel before visiting Disneyland Paris.
 - d) unpacked their bags after visiting Disneyland Paris.
- 2 Jenny's family visited ...
 - a) Main Street USA first.
 - b) Fantasyland first.
 - c) Discoveryland last.
 - d) Sleeping Beauty's castle first.
- 3 Everyone ...
 - a) except John ate hamburger and chips.
 - b) except Jenny ate sandwiches.
 - c) didn't enjoy the food in the American restaurant.
 - d) sang songs with some pirates.
- 4 The family thought that ...
 - a) American food was tasteless.
 - b) American food was unhealthy.
 - c) Chinese food was better than American food.
 - d) American food was good.
- 5 Jenny enjoyed ...
 - a) Discoveryland the most.
 - b) Sleeping Beauty's Castle the most.
 - c) the American restaurant the most.
 - d) Fantasyland the most.
- 6 When Jenny's family arrived at Discoveryland, ...
 - a) it was open.
 - b) John lost his button.
 - c) John found his button.
 - d) it was not open.

UNIT 1: Disneyland

B Give short answers to the questions. Follow the example.

1 Had Jenny been to Disneyland Paris before?

No, she hadn't.

2 Did John want to go into the park as soon as they arrived in Paris?

3 Is Main Street USA a modern street?

4 Were there any pirates in the park?

5 Did John see Sleeping Beauty?

6 Which cartoon characters did Jenny see?

C Are the statements true or false? Tick (✓) the boxes. Correct the false statements. Follow the example.

	True	False
1 Jenny had a great time at Disneyland Paris.	[✓]	[]
2 Jenny will come back from Disneyland Paris soon.	[]	[]
3 The hotel was in the park.	[]	[]
4 The Swiss Family Robinson sang songs.	[]	[]
5 The Mad Hatter had tea and cakes.	[]	[]
6 John lost a button from his shirt on the way to Discoveryland.	[]	[]

VOCABULARY

A Here are some words from the passage. Choose the best meaning for each one. Circle the letters. Follow the example.

- | | |
|-----------------------------------|---|
| 1 fantastic (line 3) | 4 picnic (line 15) |
| a) very good | a) meal eaten in a restaurant |
| b) very interesting | b) meal you carry and eat outside |
| 2 straight (line 6) | 5 imagined (line 26) |
| a) flat | a) formed a mental picture of something |
| b) directly | b) drew |
| 3 unpacked (line 7) | 6 disappointed (line 30) |
| a) put things into a suitcase | a) sad |
| b) removed things from a suitcase | b) nervous |

B Find words and phrases in the passage which have the same meanings. Use the line numbers to help you. Follow the example.

- | | |
|---|---------------------|
| 1 reported your arrival (at a hotel) (lines 6–10) | <u>checked into</u> |
| 2 type of music (lines 11–15) | _____ |
| 3 formal way of walking (lines 11–15) | _____ |
| 4 robbers who sail the sea (lines 16–20) | _____ |
| 5 with a good flavour (lines 16–20) | _____ |
| 6 understood (lines 26–30) | _____ |

C Complete the sentences with the answers from exercise B. Follow the example.

- 1 Jenny and Janet checked into the hotel and then ate at an Italian restaurant.
- 2 I love Thai food. It's so _____!
- 3 I suddenly _____ that I had left my coat at the restaurant.
- 4 The soldiers in the parade were _____ along the street.
- 5 The boat was attacked by a huge group of _____.
- 6 There's a _____ band playing at the theatre tonight.

PASSAGE 1

The English Pub



Public houses or 'pubs', as they are known, are common in towns and villages in England. Read this article to find out more about these popular places.



English pubs are places where people go to meet their friends, enjoy a drink and chat. You can order soft drinks like orange juice, cola or coffee, but many people go to pubs to have an alcoholic drink. Many types of alcoholic drinks are available, but the most popular drink is beer.

Traditional English beer comes in a variety of local flavours and

is called 'draught' beer. All draught beers are served from a hand pump on the bar rather than in bottles or cans. Unlike American or other European beers, it is served cool but not cold. Nowadays, a lot of English people enjoy a European beer called lager. This is lighter, more refreshing and is served cold. Beer is sold in pint or half-pint glasses (a pint is just over half a litre). When you order a drink, ask for a 'pint' or a 'half' of the beer you want to try.

There is no waiter service in an English pub. You go to the bar and place your order with the bar staff. They will pour your drinks and pass them to you. They will then tell you how much to pay. You have to pay for your drinks there and then. After receiving your change, you can carry your drinks back to a table to enjoy. It is usual for friends to take turns buying drinks for each other. This is known as 'buying a round'.

Pubs sell cheap food too. The choice of food ranges from small bar snacks such as crisps and peanuts, to three-course meals. A popular meal during the summer months is a 'ploughman's lunch'. This is a dish of bread, cheese or ham, and salad which is served cold. You will often find a pub's menu written on a blackboard. There may even be daily specials for you to try.

You must be at least 18 years old to buy alcohol in England. Children under 14 years old are not usually allowed inside a pub, but families with children can sit outside in the garden, known as the beer garden, when the weather is warm. Parents are allowed to buy soft drinks for their children. 30

Pubs are places where people go to enjoy themselves. People like to drink, eat, talk with friends and have a good time. If you go to an English pub, you will get a true taste of English life. 35

COMPREHENSION

A Complete the sentences. Circle the letters. Follow the example.

- | | |
|---|--|
| <p>1 Traditional English beer is ...</p> <p><input checked="" type="radio"/> a) served slightly cold.</p> <p>b) served in pint glasses only.</p> <p>c) served by waiters.</p> <p>d) called lager.</p> | <p>4 Pub food ...</p> <p>a) is cheese or ham.</p> <p>b) doesn't cost much money.</p> <p>c) is called a 'bar snack'.</p> <p>d) is a special English meal.</p> |
| <p>2 The bar staff ...</p> <p>a) are called waiters.</p> <p>b) expect you to tip them.</p> <p>c) pour your drinks before you pay.</p> <p>d) pour your drinks after you pay.</p> | <p>5 Children ...</p> <p>a) are allowed in pubs.</p> <p>b) cannot drink alcohol.</p> <p>c) must not eat pub food.</p> <p>d) must buy rounds of drinks.</p> |
| <p>3 If you 'buy a round', you ...</p> <p>a) pay for your drinks at the end of a meal.</p> <p>b) taste a variety of beers.</p> <p>c) share the cost of drinking with friends.</p> <p>d) pay for your own drinks.</p> | <p>6 English pubs ...</p> <p>a) serve only alcoholic drinks.</p> <p>b) are for families only.</p> <p>c) serve both food and drink.</p> <p>d) are no longer common in England.</p> |

B Answer the questions. Follow the example.

1 Are pubs easy to find in England?

Yes, they are common in towns and villages in England.

2 Do pubs sell non-alcoholic drinks?

3 What is 'lager'?

4 How is beer sold in pubs?

5 What are children allowed to drink?

6 Where can you get a true taste of English life?

C Are the statements true or false? Tick (✓) the boxes. Correct the false statements. Follow the example.

	True	False
1 People like to talk to each other in pubs.	[✓]	[]
2 Only children are allowed to drink soft drinks.	[]	[]
3 You have to pour your own drinks.	[]	[]
4 Crisps and peanuts are popular during the summer months.	[]	[]
5 A ploughman's lunch is a hot meal.	[]	[]
6 Children who are 15 are allowed in a pub but cannot drink alcohol.	[]	[]

VOCABULARY

A Here are some words and phrases from the passage. Choose the best meaning for each one. Circle the letters. Follow the example.

- | | |
|---|--|
| 1 common (<i>intro</i>)
(a) found everywhere
b) unusual | 4 there and then (<i>lines 20–21</i>)
a) straight away
b) later |
| 2 cool (<i>line 14</i>)
a) very cold
b) not warm | 5 daily specials (<i>line 28</i>)
a) food prepared for that day
b) same food every day |
| 3 refreshing (<i>line 15</i>)
a) bringing back strength and freshness
b) making you feel hungry | 6 beer garden (<i>line 31</i>)
a) bar in a hotel
b) garden outside a pub |

B Complete the sentences with words from exercise A. Follow the example.

- Bicycles are a common sight in Chinese cities.
- That restaurant is very popular. They always have great _____ on the menu.
- Don't forget your sweater. It's quite _____ today.
- I love orange juice. It's very _____.
- It's a beautiful day. Shall we drink our drinks in the _____?
- At the supermarket, you must pay for your food _____.

C Find words in the passage which have the same meanings. Use the line numbers to help you. Follow the example.

- | | |
|---|--------------------|
| 1 non-alcoholic drinks (<i>lines 1–5 / two words</i>) | <u>soft drinks</u> |
| 2 drink which contains alcohol (<i>lines 6–10 / two words</i>) | _____ |
| 3 drink drawn from a hand pump (<i>lines 11–15 / two words</i>) | _____ |
| 4 people who serve food and drink in pubs
(<i>lines 16–20 / two words</i>) | _____ |
| 5 where pub food is often listed (<i>lines 26–30</i>) | _____ |
| 6 where to enjoy a taste of England (<i>lines 31–35</i>) | _____ |