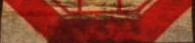


VIEWS OF THE CHINESE EMPIRE

瞻名國中

COMMERCIAL PRESS, Ltd.

SHANGHAI, CHINA



北京永定門城牆
 京漢鐵路北京車站
 北京天壇祈年殿
 北京午門
 北京內城之大清門
 北京外務部衙署
 北京學部衙署
 北京佛香閣
 北京萬壽山玉帶橋
 北京頤和園
 北京萬壽宮門前
 北京萬壽山之文昌閣
 北京萬壽山之釣魚臺
 北京十三陵
 東陵寶鼎
 北京冬宮
 北京白塔寺
 直隸保定聖宮內荷花池
 直隸天津新河
 直隸天津勸業會場正門
 直隸天津公園
 奉天山海關
 奉天萬里長城
 奉天皇宮內大殿
 奉天皇宮內之印箱
 奉天皇宮內之玉箱
 奉天福陵前三門
 奉天福陵東轉角樓
 奉天北陵
 奉天永陵神樹雪景
 奉天西塔
 奉天安東山間鐵道
 奉天安東元寶山前天后宫
 奉天旅順口內景

河南開封相國寺藏經樓
 河南開封二會祠
 河南開封禹皇臺
 河南開封繁塔
 河南京漢鐵路黃河鐵橋
 河南京漢鐵路登山北洞
 河南常口煤窰
 咸陽古渡
 溫泉古址
 山東曲阜聖廟大成殿
 孔子履
 山東曲阜至聖孔子墓
 山東鄒縣亞聖孟子墓
 山東曲阜顏回廟
 魯省聖廟前子貢手植楮
 山東泰山絕頂峯
 山東泰山南天門
 山東泰山頂
 山東泰山對松亭
 山東濟甯州鐵塔寺
 山東濰縣煤礦
 山東濟南千佛山
 山東濟南府大明湖北極閣
 山東濟南府大明湖上古隱亭
 煙台海岸
 湖北武昌洪山
 湖北武昌警鐘樓
 湖北宜昌寶塔
 湖北宜昌牛肝馬肺峽
 湖北宜昌三遊洞
 湖北宜昌白鶴寺
 湖北東湖縣執笏山
 湖北宜昌南湖
 湖北東湖兵書寶劍峽

目錄

目

杭州九獅石在三潭印月彭公祠前
 杭州三潭印月
 杭州湖心亭
 杭州錦帶湖
 杭州白堤
 杭州蘇堤
 杭州湧金門外
 江蘇鎮江焦山河
 江蘇鎮江金山嶺
 江蘇無錫黃婆墩
 杭州雙峯插雲
 杭州焦石鳴琴
 杭州平湖秋月
 杭州空谷傳聲
 杭州西湖六和塔
 杭州斷橋
 杭州西泠橋
 杭州放鶴亭
 杭州行宮
 杭州御碑亭
 杭州荷池
 杭州文瀾閣
 杭州保叔塔
 杭州大佛寺
 杭州雲棲
 杭州烟霞洞
 杭州飛來峯
 杭州冷泉亭
 杭州天竺
 杭州岳王墳
 杭州錢武肅王祠
 杭州左公祠
 杭州左公祠碑亭
 杭州劉公祠
 杭州竹素園
 杭州高莊

南京孝陵石人
 南京孝陵
 南京公園
 南京貢院號舍
 南京貢院遠明樓
 南京鐘鼓樓
 南京夫子廟
 南京督署轅門
 南京下關
 上海龍華塔
 湖南長沙楊勇懋公之墓
 湖南南嶽新殿
 湖南岳州府臨湘縣西湖塔
 湖南長沙岳麓山
 湖南長沙岳麓山前面
 湖北大冶鐵礦
 南京孝陵石獸
 南京孝陵石柱
 南京明故宮午門
 南京雨花臺
 南京清涼山
 南京鷄鳴寺
 南京朝天宮
 南京半山寺
 南京北極閣
 南京北極閣
 南京莫愁湖
 南京烏龍潭
 南京玄武湖
 江蘇無錫錫山
 江蘇無錫錫山
 江蘇無錫錫山黃公澗
 杭州曲院風荷
 杭州柳浪聞鶯
 杭州南屏晚鐘
 杭州雷峯夕照
 杭州西湖雷峯塔

CONTENTS

- The Outer City of Peking.
 Peking-Hankow Railway:—Peking Station.
 The Nien Tien, Temple of Heaven, Southern City, Peking.
 Entrance to the Imperial Court, Peking.
 The Inner City of Peking.
 The Waiwagan, or Chinese State Department, Peking.
 The Imperial Board of Education, Peking.
 An Imperial Palace, Peking.
 Hunchback Bridge, Wan Shou Shan, Peking.
 A bird's-eye view of the E Ho Summer Palace, Peking.
 Entrance to the E Ho Summer Palace, Peking.
 A bird's-eye view of Wan Shou Shan, Peking. [Peking.
 Temple of the Chinese god of Literature, Wan Shou Shan,
 The "Fisherman's" Pavilion, Wan Shou Shan, Peking.
 The Ming Tombs, Peking.
 The Eastern Mausoleum, Peking.
 Imperial Winter Palace, Peking.
 The "White Pagoda" Temple, Peking.
 Confucius' Temple, Po Tingfu, Chih.
 Sin Ho, (the New River) Tientsin.
 Entrance to Commercial Exhibition Grounds, Tientsin.
 Public Garden, Tientsin.
 Shan Hai Kuan.
 The Great Wall at Mukden.
 Imperial Palace, Mukden, Manchuria.
 Imperial Seals and Casket of the Manchu Rulers.
 The Casket and its Stand.
 Gateway to Fu-lin, Mukden.
 The Eastern Tower, Fu-lin, Mukden.
 The Northern Mausoleum, Mukden.
 Antiquated Trees, Imperial Mausoleum, Mukden.
 The Tibetan Pagoda, Mukden.
-
- Antung-Mukden Railway:—In the Mountains.
 Temple of god of the High Seas, Antung, Manchuria.
 View of Port Arthur Harbour.
 A Library for Buddhist Literature, Kaifeng, Honan.
 Park Tseng Chi, Kaifeng, Honan.
 Altar of King Yi, Kaifeng, Honan.
 The "Multiplicity" Pagoda, Kaifeng, Honan.
 Peking-Hankow Railway:—Bridge over the Yellow River.
 Coal-Mines, Chang-kou, Honan.
 The Ancient Fort of Shenyang, Shensi.
 Ling Tsung Hsien, Shensi.
 Confucius' Temple, Chi-Pou, Shantung.
 Confucius' Shrine: a Fac-simile.
 Tomb of Confucius, Chi-Pou, Shantung.
 Tomb of Mencius, Tsochisten, Shantung.
 Temple of Yen Tze, Chi-Pou, Shantung.
 Dead Kowan near Confucius' Tomb, Chi-Pou, Shantung.
 The "Highest Peak," Taishan, Shantung.
 "Gate to the Southern Heaven," Taishan, Shantung.
 On top the Taishan, Shantung.
 Pine Grove, Taishan, Shantung.
 The "Iron Pagoda" Temple, Chinin, Shantung.
 Coal-Mines, Weishien, Shantung.
 The "Thousand Buddhas" Mountain, Chinan, Shantung.
 Temple of the North Pole, Chinan, Shantung.
 Kuli Ting, Chinan, Shantung.
 Piao-Shan, Chinan, Shantung.
 View of Chefoo Harbour.
 Hung Shan, Wachang, Hupoh.
 Alarm Tower, Wachang, Hupoh.
 The Jehang Pagoda, Jehang, Hupoh.

The "Cow-liver Gorge," Ichang, Hupoh.
 Sun-yu-tung, Ichang, Hupoh.
 The "White Marble" Temple, Ichang, Hupoh.
 The "Tablet Presenting Hill," Tunglin, Hupoh.
 South Lake, Ichang, Hupoh.
 The "Sword" Gorge, Tunglin, Hupoh.
 Stone Images, Ming Tombs, Nanking.
 The Ming Tombs, Nanking.
 Public Garden, Nanking.
 Examination Hall, Nanking, showing rows of Cells.
 The Ming Yuen Tower, Examination Hall, Nanking.
 The "Drum Tower," Nanking.
 Confucius' Temple, Nanking.
 Viceroy's Yamen, Nanking.
 Shanghai-Nanking Railway; Shaikwan Station, Nanking.
 The Jung Hwa Pagoda, near Shanghai.
 Tomb of General Yang Yo Ping, Changsha, Hunan.
 Temple of San-yo on top of the Sacred Mountain itself.
 Si Hu Ton, Lin Hsian, Hunan.
 A Temple on Yoh Shan, Hunan.
 A bird's-eye view of Yoh, Changsha, Hunan.
 Iron-Mines, Ta Ya, Hupoh.
 Stone Animals, Ming Tombs, Nanking.
 Stone Pillars, Ming Tombs, Nanking.
 Ruins showing the entrance to the Great Audience Hall,
 Ming Palace, Nanking.
 Hsi Hwa Tai, Nanking.
 The Ching-liang Hill, Nanking.
 Chi-ning Temple, Nanking.
 Chao Tien Kung, Nanking.
 The "Mid-hill" Temple, Nanking.
 A distant view of the "North Pole" Tower, Nanking.
 The "North Pole" Tower, Nanking.
 The famous "Sorrowless" Lake, Nanking.

The "Black-Dragon Pool," Nanking.
 Yuan Wu Lake, Nanking.
 Shi-Shan, Wushih, Kiangsu.
 Wu-li Chiek, Wushih, Kiangsu.
 Hsi-shan, Wushih, Kiangsu, famous for its waterfalls.
 The "Winding Hall," built by Emperor K'ang Hi 1700,
 West Lake, Hangchow.
 The Willow Bay—Pavilion built by Emperor K'ang Hi
 1700, West Lake, Hangchow.
 A Pavilion on the San Ping Range, West Lake, Hangchow.
 A Sunset View of the Thunder Peak Pagoda, West Lake,
 Hangchow.
 Lini Fong Ta or Thunder Peak Pagoda, Hangchow.
 The Nine Lion Rock in front of Pung Yu Ling's Temple,
 West Lake, Hangchow.
 San-tan-jon-Yoh, West Lake, Hangchow. [chow.
 "The Heart of the Lake"—a Pavilion, West Lake, Hang-
 chow.
 The "Silk Girdle Lake," Hangchow.
 Prefect Pui's Causeway, West Lake, Hangchow.
 Prefect So's Causeway, West Lake, Hangchow. [chow.
 The West Lake viewed from the Ying Ch'in City Gate, Hang-
 chow.
 Chiao Shan, near Chinkiang.
 The Ching Shan River, Chinkiang.
 The Chingchi Range near Chinkiang.
 Huang Po Ton, Wushih, Kiangsu.
 Hsian Pung Chieh Yung, West Lake, Hangchow.
 The Musical Rock, West Lake, Hangchow.
 The Tang Dynasty's Pavilion, West Lake, Hangchow.
 "The Exploding Pavilion," West Lake, Hangchow.
 Lin Ho Ta Pagoda, Hangchow.
 The "Broken-off" Bridge, West Lake, Hangchow.
 The Si Ling Bridge, West Lake, Hangchow.
 The "Stork Pavilion," West Lake, Hangchow.
 Emperor Chien Lung's Wayside Lodge, West Lake, Hangchow

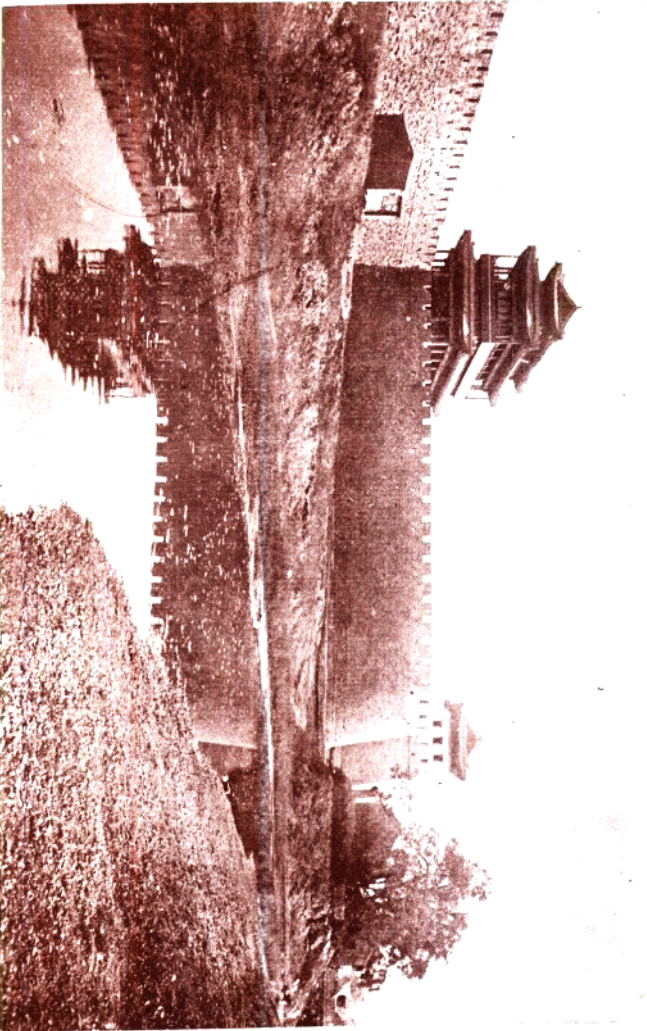
YU IX DING.

- The Lotus Pool—inside the Imperial Wayside Lodge.
The Library in the Imperial Wayside Lodge.
Prince Sit's Protecting Pagoda, West Lake, Hangchow.
The Great Buddha's Temple, West Lake, Hangchow.
Bamboo Grove, West Lake, Hangchow.
The "Cloudy Cave," West Lake, Hangchow.
The "Overhanging" Peak, West Lake, Hangchow.
A Pavilion in Ling Yin Temple, West Lake, Hangchow.
The "Hindu" Temple, West Lake, Hangchow.
General Yo Fet's Tomb, Hangchow.
Chien Lin's Temple, West Lake, Hangchow.
General Tsao Tsong Tang's Temple, West Lake, Hangchow.
Entrance to General Tsao's Temple.
Lin Teon's Temple, West Lake, Hangchow.
The Garden in Tsian Yi Tai's Temple, West Lake, Hangchow.
Koi's Summer Residence, West Lake, Hangchow.
Liu's Summer Residence, West Lake, Hangchow.
Sung's Summer Residence, West Lake, Hangchow.
Lien's Summer Residence, West Lake, Hangchow.
The Tiger Temple, West Lake, Hangchow.
Chi Sing Yen, Shanyin, Chekiang.
Pei Hsia Ko, Wenzhou, Chekiang.
The Orphan Islet in the Yangtze near Kinkiang.
Ma Wei Chiao, Lushan, Kinkiang.
Bride of the goddess of Mercy, Lushan, near Kinkiang.
Si Lin Pagoda, Lushan, near Kinkiang.
Po Hwa Chin, Nanchang, Kiangsi.
Pa Chien Tai, Kungchow, Kiangsi.
View of the whole village, Po Hwa Chin, Nanchang, Kiangsi.
Northern City Gate, Canton.
Kuangyin Shan, Canton.
Swatow, Canton.
A Fort outside Canton City, Canton.

Yamen of the Kwangtung Governor, Canton.

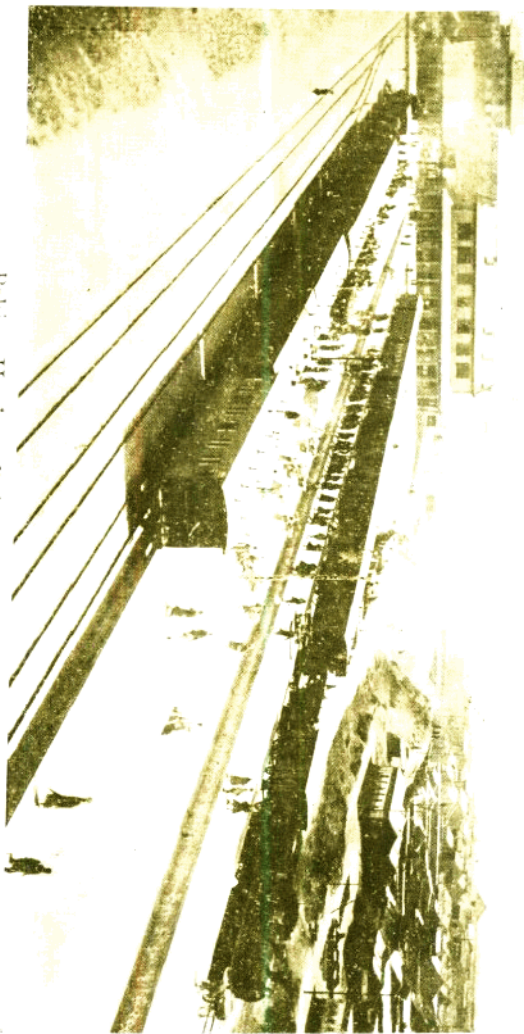
- Pa Chow Pagoda, Canton.
Five Stories Pagoda, Canton.
The Provincial College, Canton.
The Water Clock, Canton.
Swatow-Canton Railway:—Swatow Station.
Nan Po To, Amoy.
View of Nantai, Foochow.
Nantai, Foochow; Fukien.
Pagoda Anchorage, Foochow.
The "White Pagoda," Foochow.
The Golden-Hill Pagoda, Foochow.
Huang Shan Chiao Bridge, Foochow.
The "Long Bridge," Foochow. (1)
The "Long Bridge," Foochow. (2)
Tomb of the First King of the Ming Kingdom, Foochow.
The Wu-I Mountain, famous for its tea, Fukien.
Hsieh Tao's Well, Chengtu, Szechwan.
The "Beautiful" Pagoda, Chengtu, Szechwan.
Pwan Pwan Jon, Chengtu, Szechwan.
Tartar City, Chengtu, Szechwan.
Port of Yachow, Szechwan.
Sien Jen Tung, Yachow, Szechwan.
The Chain-Bridge, Yung Hsien, Szechwan.
The Great Buddha's Temple, Yung Hsien, Szechwan.
Wuchick, Kueichow, Szechwan.
Trees said to be more than a thousand years old, Hwang
Lung Temple, Lushan, Yachow, Szechwan.
The Long Bridge, Hsuan Lin Hsien, Szechwan.
Chi Shih Ko, Chuanchow, Szechwan.
Chih Chi Bridge, Chengtu, Szechwan.
Si Li Po, Szechwan.
Hsien Yen Tung, Kueiyang, Kueichow.
Ling Lin Hsien, Kueichow, showing its City Wall.

北 京 永 定 門 城 牆



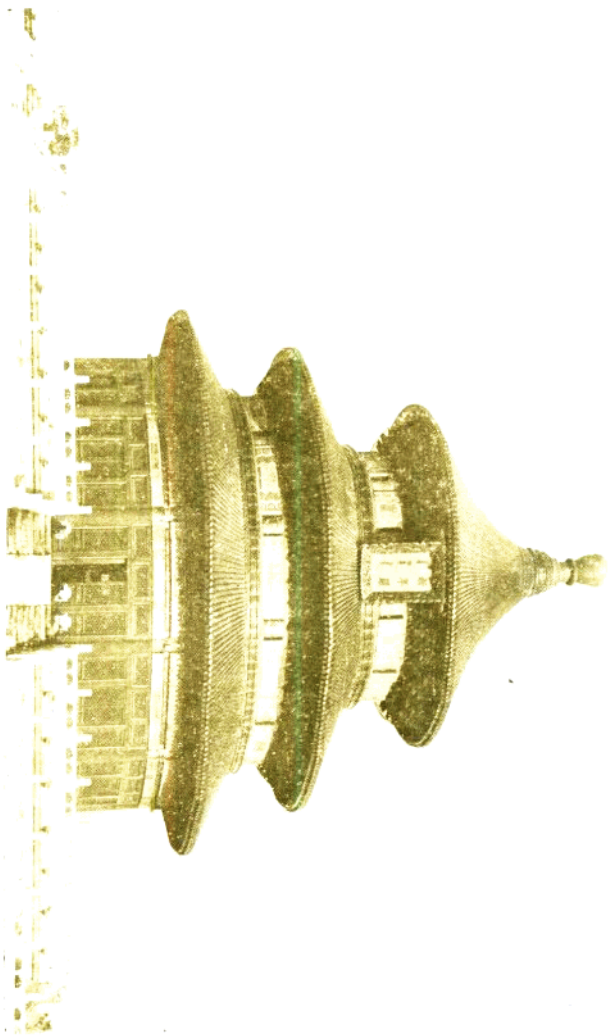
The Outer City of Peking.

站車京北路鐵漢京



Peking Hankow Railway:—Peking Station.

殿年祈壇天京北



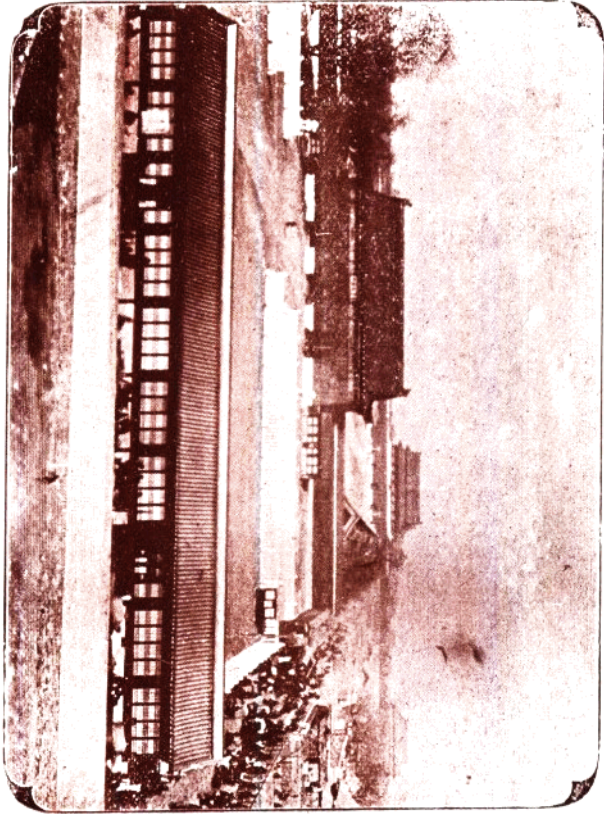
Chi Nien Tien, Temple of Heaven Southern City, Peking

門 午 京 北



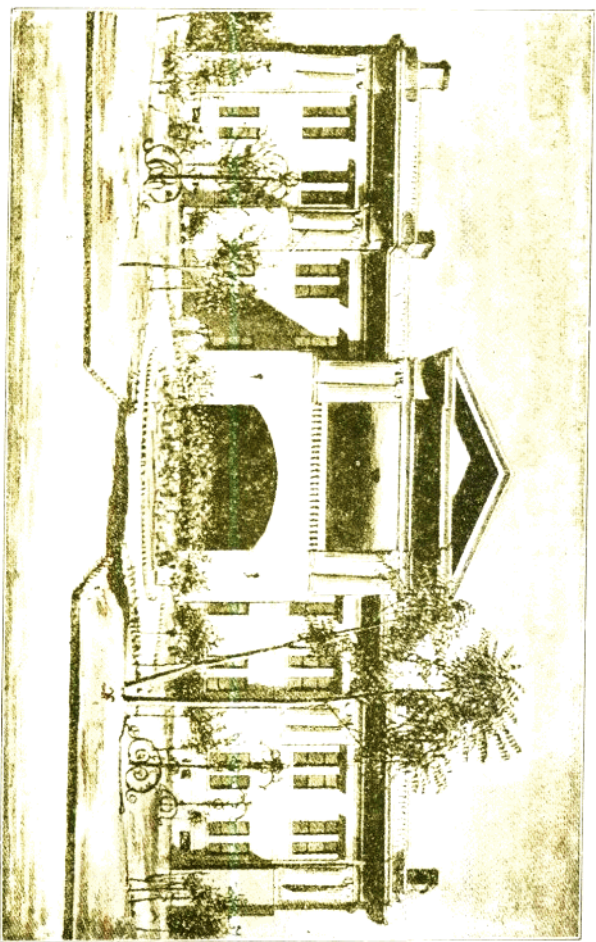
Entrance to the Imperial Court, Peking.

門 清 大 之 城 內 京 北



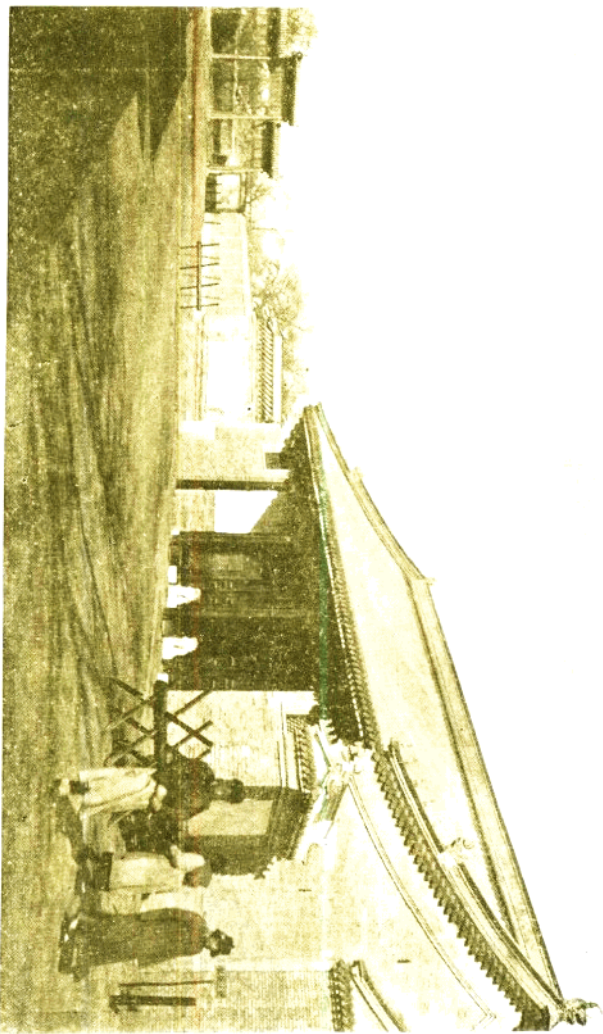
The Inner City of Peking.

署 衙 部 務 外 京 北



The Waiwupu or Chinese State Department, Peking.

署 衙 部 學 京 北



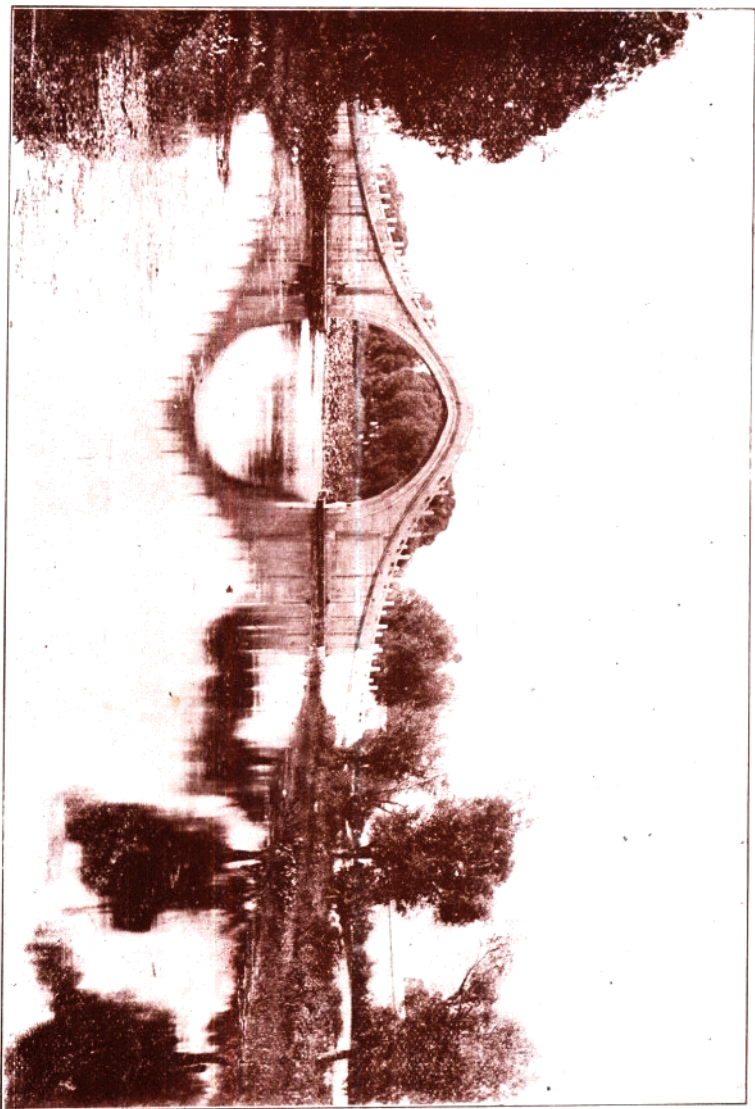
The Imperial Board of Education, Peking.

北京
佛香閣



An Imperial Palace, Peking.

橋帶玉山壽萬京北



Hunchback Bridge, Wan Shou Shan, Peking.

園 和 頤 京 北



A bird's eye view of the H. Ho Summer Palace, Peking.

前門宮壽萬京北



Entrance to the E. Ho Summer Palace, Peking.