

TWELFTH ANTIQUES

and their
CURRENT PRICES



EDWIN G.
WARMAN

25th
Anniversary
EDITION

Warman's

**TWELFTH ANTIQUES
AND
THEIR CURRENT PRICES**

**by
Edwin G. Warman**

25TH ANNIVERSARY EDITION



**Check List and Guide of
Comparative Prices for
Antique Dealers and Collectors**



SECOND PRINTING

**Published by
E. G. Warman Publishing Inc.
Uniontown, Pennsylvania 15401**

1974

© 1974 by Edwin G. Warman

*Additional copies of this book may be
purchased directly from the publisher--*

E. G. WARMAN PUBLISHING INC.

8 Frankhooover Street

**Uniontown, Pa. 15401
U. S. A.**

Price \$8.95 per copy

— All Rights Reserved —

***No portion of this book may be reproduced--
except short excerpts by reviewers or writers
of magazine articles and books--without
written permission of the publisher.***

Printed in the United States of America

Warman's

**TWELFTH ANTIQUES
AND
THEIR CURRENT PRICES**

by
Edwin G. Warman

25TH ANNIVERSARY EDITION



**A Check List and Guide of
Comparative Prices for
Antique Dealers and Collectors**



SECOND PRINTING

**Published by
E. G. Warman Publishing Inc.
Uniontown, Pennsylvania 15401**

1974

© 1974 by Edwin G. Warman

*Additional copies of this book may be
purchased directly from the publisher--*

E. G. WARMAN PUBLISHING INC.

8 Frankhoover Street

**Uniontown, Pa. 15401
U. S. A.**

Price \$8.95 per copy

— All Rights Reserved —

***No portion of this book may be reproduced--
except short excerpts by reviewers or writers
of magazine articles and books--without
written permission of the publisher.***

Printed in the United States of America

INTRODUCTION

The "12th Antiques and Their Current Prices" marks my 25th year, or Silver Anniversary, as author and published of the first and foremost price guide on antiques.

In the late 1940s, I conceived the idea and realized the need for a reference book on current retail prices of antiques - not only for the dealer but for the collector as well. In 1949, "Antiques and Their Current Prices" was compiled and published.

An anniversary message should contain some pronouncement and promise, but neither is necessary here. It is all too evident. As the years have accumulated so has my experience and knowledge. The first price guide contained a little more than a hundred pages and just some sixty groups. The Silver Anniversary edition is over 500 pages with more than 350 classifications and in excess of 40,000 listings - our largest and most complete volume ever issued.

Antiques and Their Current Prices has also grown because of the increased interest in antiques and collectibles. Antique shows and sales are well attended all over the country. Flea markets have sprung up at every crossroad. No longer do I find the 'usuals,' but also the 'new' people. Young people are showing up. There is a sense of nostalgia among them and nostalgia is becoming a growth industry.

There has been a great surge of interest in American primitives. Woodenware, pottery, brass, quilts and solid furniture are all in high demand. Because of this nostalgia which roots from man's desire to remember the things of the past and the inborn trait to collect, we now have the "new collectibles." These objects cannot rightfully be classified as antiques but they are being bought and sold everywhere. I have listed some of the new collectibles in this issue. I could not cover all of them but I have attempted to include representative examples.

Another reason for the increased interest in antiques is the investment factor. With the continued devaluation of the dollar, more and more people are putting their dollars into the arts. It has been estimated that over a billion dollars will be spent for art objects and antiques in the next few years. Paintings, period furniture, silver, gold and glass are all sound investments. Silver alone has risen over 100% in the last year. With our country's renewed friendship with China, Oriental items are in vogue and constitute good investments.

In general, prices of all antiques have risen, some more than others. Glassware is now on the move. Pressed and pattern glass, and especially cut glass, are all in great demand. Cut glass has soared to a phenomenal new high. But, if you don't know your glass, know your dealer. Many reproductions of glassware have infiltrated the markets.

Period furniture has become almost inaccessible to the average person and, thusly, has created a gap in the furniture market because of high prices and unavailability. Victorian furniture and accessories are demanding higher prices and getting scarcer. Now golden oak is showing up and becoming popular in some sections of the country.

It is impossible and impractical to cover and list every group in depth. I have attempted to give you a representative listing of today's most desirable antiques and collectibles.

The prices listed in this book are retail and have been averaged out. They were compiled by me personally by attending many antique shows, sales and auctions across the country; from private sources, shops, dealers and collectors. Prices vary from region to region and because of availability, demand, condition and interest, they will not always correspond with the prices listed herein. The primary purpose of this book is to be considered A GUIDE TO PRICES and NOT THE FINAL AUTHORITY!

Every effort has been made to record the prices in this book accurately. However, in the event of clerical, typographical or any other errors, I decline to assume any responsibility for loss or losses incurred by the purchasers or users of this book.

Regretfully, I am unable to reply to the many requests which I receive for information and prices from individuals. I suggest that you consult local dealers, show exhibitors, books, trade papers and magazines. They are all valuable aides in assisting to determine origin, age and value of almost any item.

EDWIN G. WARMAN
Uniontown, Pa.

ACKNOWLEDGMENTS

Antique Cellar, The, Vanderbilt, Pa.
Apt, Bette M., Pittsburgh, Pa.
Blair, Elsie, Hopwood, Pa.
Bowen Antiques, Kennsington, Md.
Brass Lantern Antiques, Wiley Ford, W.Va.
Briar Hill Manor Antiques, Kittaning, Pa.
Brighton House Antiques, Beaver, Pa.
Burroughs Antiques, Washington, Pa.
Country Store, The, Laughlentown, Pa.
Dell's Antiques, Denver, N. C.
Downer, Albert, Ruffs Creek, Pa.
Dey's Antiques, Addison, Pa.
Economy Village Antiques, Ambridge, Pa.
Eller, E. C., Pittsburgh, Pa.
Fisher, Don, Pittsburgh, Pa.
Gates, John F., Photographer, Uniontown, Pa.
George, Margery B., Pittsburgh, Pa.
Hi-Wheel Antiques, Cumberland, Md.
Johnson, Lila R., Uniontown, Pa.
Kinzle's Antiques, Duncansville, Pa.
Kocevar's Antiques, Manheim, Pa.
Marshall's Antiques, Brockway, Pa.
Old Pike Antiques, Addison, Pa.
Reed, Pat Anne, Pittsburgh, Pa.
Resh's Antiques, Lancaster, Pa.
Ross Antiques, Fairmont, W. Va.
Rush House Antiques, Farmington, Pa.
Saul, Mr. and Mrs. Manuel, Washington, Pa.
Schmunk, Joan, Farmington, Pa.
Strassler, Jack, Greentree, Pa.
Stout, June, Ruffs Creek, Pa.
Village Antiques, Columbus, Ohio
Webb, Dorothy, Rochester, Pa.
Whale's Tale, The, Cridens Corner, Pa.
Wilson, Gailey B. & Son, Hickory, Pa.
Wright, Richard, Spring City, Pa.
Wyatt, Betty, Bridgeport, W. Va.

If I have overlooked anyone who so kindly permitted me to photograph items or assisted me in anyway to compile the "12th Antiques and Their Current Prices," it was not intentional; and my sincerest apologies.

Thank you for your generosity and interest in helping to make this book possible.

PATTERN GLASS

— Section One —

CLEAR GLASS PATTERNS

Quotations listed on Pattern Glass are retail prices for pieces in perfect condition. All prices are on clear glass. The Colored Glass Section follows this group and is designated as "Section Two." Each pattern is illustrated with an original drawing or photograph. Items marked with an asterisk (*) have been, or are now being reproduced.



ACTRESS

(Theatrical, Goddess of Liberty, Annie)

Made by Labelle Glass Co., Bridgeport,
Ohio, Circa 1872.



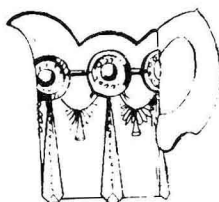
Bowl, footed, 6"	\$ 32.50
Butter dish	54.00
Cake stand	52.00
Celery	55.00
Cheese dish, covered	75.00
Compote	
a. Covered, high standard	80.00
b. Covered, low standard	70.00
c. Open, 10"	50.00
Creamer	42.50
Goblet	55.00
Honey dish, covered	48.50
Marmalade jar	44.00
*Pickle	18.75
Pitcher	
a. Milk	90.00
b. Water	75.00
Platter	
a. Pinatote, 9½ x 12½", oval	34.50
b. Miss Nielson center	35.00
Sauce	
a. Flat	10.00
b. Footed	12.75
Shakers, pair	42.50
Spooner	35.00
Sugar bowl	52.50
Tray, bread	40.00

*Reproduced Item

ALABAMA

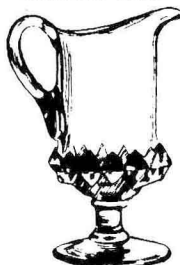
(Beaded Bull's Eye and Drape)

Made by U. S. Glass Co., Circa 1898



Butter dish, covered	\$ 21.00
Compote, open, 5"	18.00
Creamer	18.00
Honey dish	10.00
Pickle	10.50
Pitcher, water	35.00
Spooner	11.50
Sugar bowl, covered	20.00
Syrup	25.00

AMAZON (Sawtooth Band)



Banana stand	\$ 30.00
Bowl, open	15.00
Butter dish	23.50
Cake stand	25.00
Celery	16.50
Champagne	14.50
Claret	12.00
Compote	
a. Jelly, 5½"	18.00
b. Open, high standard	29.50
Cordial	15.00
Creamer	20.00
Flower vase	16.50
Goblet	12.75
Pitcher	
a. Syrup	18.50
b. Water	30.00
Sauce, flat, 4½"	7.00
Shakers, pair	18.00
Spooner	14.00
Sugar bowl	24.00
Tumbler	9.00
Wine	10.00

AMBERETTE
(See Colored Glass Section)

ANTHEMION

Made by Model Flint Glass Co., Findlay, Ohio. 1890 period.



Bowl, berry, 7"	\$ 12.00
Butter dish	24.00
Cake plate, 9 1/4"	19.50
Celery	14.50
Creamer	18.50
Marmalade jar	12.50
Pitcher	22.50
Plate, 10"	16.50
Sauce	7.50
Spooner	10.00
Sugar bowl	24.00
Tumbler	10.00

APOLLO

Made first by Adams & Co., C. 1875; secondly, by McKee Bros., about 1895. Both of Pittsburgh, Pa.



Bowl	\$ 10.00
Butter dish	27.50
Cake stand	22.50
Celery	20.00
Compote	
a. Covered, high standard	36.00
b. Open, low standard	25.00
Creamer	24.00
Goblet	16.50
Pickle	10.00
Pitcher, water	32.50

Sauce	5.00
a. Flat	8.00
b. Footed	12.50
Spooner	27.00
Sugar bowl	19.50
Tray, water	9.50
Tumbler	10.00
Wine	

ARABESQUE

Produced by Bakewell, Pears & Co., Pittsburgh, Pa. C. 1862-64.



Butter dish	\$ 35.00
Celery	22.50
Compote	
a. Covered, 6", high standard	30.00
b. Covered, 8", low standard	36.00
c. Covered, 8", high standard	40.00
Creamer	29.50
Goblet	18.50
Pitcher	32.00
Sauce	6.00
Spooner	15.00
Sugar bowl	32.50

ARCHED GRAPE

Produced by Sandwich Glass Co. in 1870's.



Butter dish	\$ 32.50
Celery	21.00
Compote	
a. Covered, high standard	37.50
b. Covered, low standard	32.50
Cordial	11.50
Creamer	22.50
Goblet	12.75
Pitcher	32.50
Sauce	7.00
Spooner	11.50
Sugar bowl	32.50
Wine	9.50

ARGUS

Bakewell Pears Co., made this thumbprint-type pattern in flint glass at Pittsburgh in the early 1870's.



Ale glass	\$ 26.50
Bitters bottle	21.50
Bowl, 5 1/2"	25.00
Butter dish	40.00
Celery	49.00
Champagne	47.50
Cordial	15.00
Creamer	42.00
Decanter	
a. Pint	49.00
b. Quart	55.00
Egg cup	16.50
Goblet	22.50
Lamp, footed	40.00
Mug, applied handle (scarce)	50.00
Salt, open	12.00
Sauce	14.00
Spooner	28.50
Sugar bowl	44.50
Tumbler	
a. Footed	22.50
b. Jelly	17.50
c. Water	20.00
Wine	38.50

ART

(Teardrop, Diamond Block, Job's Tears)

Produced by Adams & Co., Pittsburgh, Pa., in the 1870's.



Banana dish (scarce)	\$ 60.00
Basket, fruit	37.50
Bowl, berry, 8"	18.50
Butter dish	30.00
Cake stand, 10"	27.50
Celery	24.00
Compote	
a. Covered, 7", footed	35.00
b. Open, 7 1/2", footed	28.50
Cracker jar	19.50
Creamer	24.50
Cruet	20.00
Goblet	21.50
Mug	12.75
Pickle	10.00
Pitcher, water	35.00
Sauce	6.75
Spooner	14.00
Sugar bowl	30.00
Tumbler	10.00
Vinegar jug	
a. 1/2 pint	14.50
b. 3 pints	16.50

ASHBURTON

A popular pattern in large thumbprint, in the mid 1850's to 1860. Made by New England Glass Co., Cambridge, Mass.; Sandwich Glass Co., in Mass., and McKee Bros., Pittsburgh, Pa.

Ale glass	\$ 35.00
Bitters bottle	36.50
Butter dish	87.50
Celery	
a. Plain top	55.00
b. Scalloped top	72.50
Champagne	45.00
*Cordial	42.50
Creamer (scarce)	120.00
Decanter	
a. Pint	48.00
b. Quart	55.00

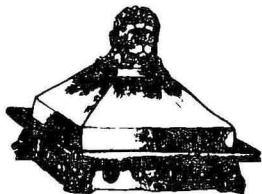


c. 3 pints	62.50
Egg cup	21.50
Goblet	
a. Flaring sides	48.50
b. Straight sides	40.00
Jug	
a. Pint	60.00
b. Quart	75.00
c. 3 pints	80.00
Lamp	48.50
Lemonade glass	38.00
Mug	42.50
Sauce	15.00
Spooner	29.50
Sugar bowl	85.00
Toddy jar, covered (rare)	200.00
Tumbler	
a. Jelly	21.50
b. Water	32.00
c. Whiskey	40.00
Wine bottle, with tumble-up	110.00
Wine	37.50

*Reproduced Item

ATLANTA (Clear Lion Head)

Produced C. 1898, by Fostoria Glass Co.,
Moundsville, W. Va.



Bowl, berry	\$ 15.00
Butter dish, covered	35.00
Cake stand	26.50
Compote	
a. Covered, 5", square stem	39.50
b. Open, 5", square stem	25.00
Creamer	22.00

Goblet	24.00
Marmalade jar	20.00
Pickle	11.50
Salt	10.00
Sauce	8.75
Spooner	14.50
Sugar bowl, covered	35.00
Toothpick	12.00

BABY FACE



Butter dish	\$ 65.00
Cake stand	
a. Large	55.00
b. Small	75.00
Celery vase	52.50
Compote	
*a. Covered, small	70.00
b. Open, large	50.00
Cordial	36.00
Creamer	65.00
*Goblet	65.00
Lamp	80.00
Pitcher	89.50
Salt dip	20.00
Sauce, footed	19.50
Spooner	35.00
*Sugar bowl	65.00
*Wine	42.00

*Reproduced Item

BABY THUMBPRINT, See Dakota

BALL AND SWIRL

Bowl, finger	\$ 10.00
Butter dish	32.50
Cake stand	22.50
Compote	
a. Covered, high standard	35.00
b. Open, high standard	22.75
Cordial	10.00
Creamer	21.50
Decanter	22.50
Goblet	11.50
Mug	
a. Large	11.50
b. Small	10.00
Pitcher	
a. Tankard	40.00
b. Water	30.00



Sauce, footed	8.50
Spooner	12.50
Sugar bowl	32.50
Tumbler	10.00
Wine	12.50

BALTIMORE PEAR (Gypsy, Double Pear, Twin Pear)

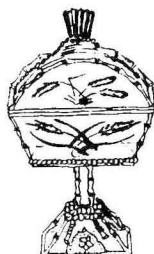


Bowl	\$ 24.00
a. Berry	30.00
b. Covered	40.00
*Butter dish	37.50
*Cake stand	35.00
*Celery	
Compote	
a. Covered, 6", high standard	60.00
b. Covered, 7", high standard	67.50
c. Covered, 8", high standard	72.50
d. Covered, 8 1/2", low standard	65.00
e. Open, large	42.50
*Creamer	29.50
*Goblet	30.00
Pickle	15.00
*Pitcher, water	60.00
Plate	20.00
Sauce	
a. Flat	8.00
b. Footed, large	11.50
*c. Footed, small	13.50
Spooner	18.50
*Sugar bowl	40.00

*Reproduced Item

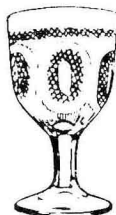
BAMBOO (Notched Rib)

Made in the middle 1880's by Labelle
Glass Co., Bridgeport, Ohio.



Butter dish	\$ 20.00
Celery	15.00
Compote	
a. Covered, 7"	28.00
b. Covered, 8"	32.00
c. Covered, 9"	37.50
Creamer	18.00
Dish	
a. Oblong, 7"	7.50
b. Oblong, 8"	9.00
c. Oblong, 9"	11.50
Pitcher, water	26.50
Sauce, 4"	5.75
Shakers, pair	18.00
Spooner	11.50
Sugar bowl, covered	20.00
Tumbler	12.00

BANDED BUCKLE



Butter dish	\$ 24.50
Compote, covered	42.50
Cordial	12.75
Creamer	30.00
Egg cup	16.50
Goblet	12.50
Pickle, oval	10.00
Pitcher	
a. Syrup	22.50
b. Water	35.00
Salt, master, footed	15.00
Sauce	6.75

Spooner	12.00
Sugar bowl	32.00
Tumbler	12.50
Wine	10.00

BARBERRY



Bowl, 8", covered	\$ 20.00
Butter dish	29.50
Cake plate	25.00
Celery	20.00
Compote	
a. Covered, high standard	45.00
b. Covered, 8", low standard	32.50
Cordial	16.50
Creamer	21.00
Dish, oval, 8 x 5½"	19.50
Egg cup	16.00
Goblet	13.50
Honey dish, 3½"	10.00
Pickle	12.00
Pitcher	36.50
Plate	
a. 6"	16.50
b. Cup cake size	15.00
Salt, footed	12.75
Sauce	
a. Flat	7.75
b. Footed	9.50
Spooner	12.50
Sugar bowl	30.00
Syrup jug. Pewter top	28.50
Wine	10.00

BARLEY



Butter dish	\$ 25.00
Cake stand, 9"	25.00
Celery	18.00
Compote, covered, 8½"	40.00
Cordial	15.00
Creamer	18.50
Dish, oval, 6½" x 9½"	14.75

Goblet	16.50
Marmalade jar	18.75
Pickle, open handles	15.00
Pitcher	29.50
Plate, 6"	18.00
Platter	27.50
Sauce	
a. Flat	7.50
b. Footed, 4"	9.00
c. Footed, 5"	10.50
Spooner	14.00
Sugar bowl	27.00
Wine	12.00

BARRED FORGET-ME-NOT (See Colored Glass Section)

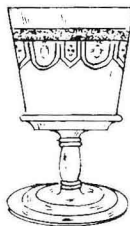
BASKETWEAVE (See Colored Glass Section)

BEADED ACORN MEDALLION



Butter dish	\$ 24.50
Compote	
a. Covered, high standard	38.50
b. Covered, low standard	30.00
Creamer	24.00
Dish, oval	11.50
Egg cup	14.00
Goblet	15.00
Honey dish	9.00
Pickle	9.50
Pitcher	32.00
Plate, 6"	12.50
Salt, footed	6.00
Sauce	5.50
Spooner	11.50
Sugar bowl	25.00
Wine	8.00

BEADED BAND



Butter dish	\$ 22.50
Cake stand	18.00
Celery	17.50
Compote, covered	28.00
Cordial	12.00
Creamer	18.00
Goblet	10.00
Marmalade jar	16.50
Pickle	9.00
Platter	14.00
Sauce	6.75
Shakers, pair	14.00
Spooner	11.00
Sugar bowl	22.50

BEADED DEWDROP (Wisconsin)

Made in 1898-99 by U. S. Glass Co.,
Gas City, Indiana.



Bowl	
a. Covered, oblong, 6", 8"	\$ 12.75
b. Covered, round, 7", 8"	16.50
Butter dish	
a. Handled	21.00
b. Large	17.50
c. Small	15.00
Celery	20.00
Celery tray	21.50
Compote	
a. Covered, 6", 7", 8"	40.00
b. Open, 8½", 9½", 10½"	27.50
Condiment set, 4 pieces in holder	35.00
Creamer	
a. Individual	10.00
b. Large	15.00
Cruet	14.00
Cup and saucer	16.50
Dish	
a. Candy	10.00
b. Handled, oval, 6", covered	18.00
c. Handled, oval, 6", open	11.50
d. Sweetmeat	18.00
Goblet	18.00
Mug	15.00
Pitcher	
a. 3 pints	32.50
b. ½ gallon	34.00
Sauce	
a. Handled, 5½"	7.00
b. Flat, 4"	6.50
Shakers	
a. Squatty, pair	15.00
b. Tall, pair	18.00
Spooner	16.00

Sugar bowl	
a. Large, covered	33.50
b. Small, covered	23.00
Syrup	18.50
Toothpick holder	9.00
Tumbler	22.00
Wine	14.50

BEADED GRAPE (See Colored Glass Section)

BEADED GRAPE MEDALLION

Made by Boston Silver Glass Co., C.
1867-68, at Cambridge, Mass.



Butter dish	\$ 24.00
Castor bottle	9.00
Celery	29.00
Compote	
a. Covered, 7½", 8½", large, high standard	37.50
b. Covered, low standard	35.00
c. Covered, oval, collared base, 10 x 7"	38.50
Cordial	20.00
Creamer	30.00
Dish, oval	15.00
Egg cup	15.00
Goblet	16.50
Honey dish	8.00
Lamp, handled	25.00
Pickle	10.00
Pitcher	37.50
Plate, 6"	15.00
Salt	
a. Footed	11.00
b. Oval, flat	10.00
c. Round, flat	9.00
d. Celery dip	5.00
Sauce	9.00
Spooner	14.00
Sugar bowl	30.00

BEADED LOOP (Oregon)

Made C. 1906-08 by U. S. Glass Co., one
of the States' Series.

Bowl, berry, covered	\$ 16.00
Butter dish	24.50
Cake stand	19.50