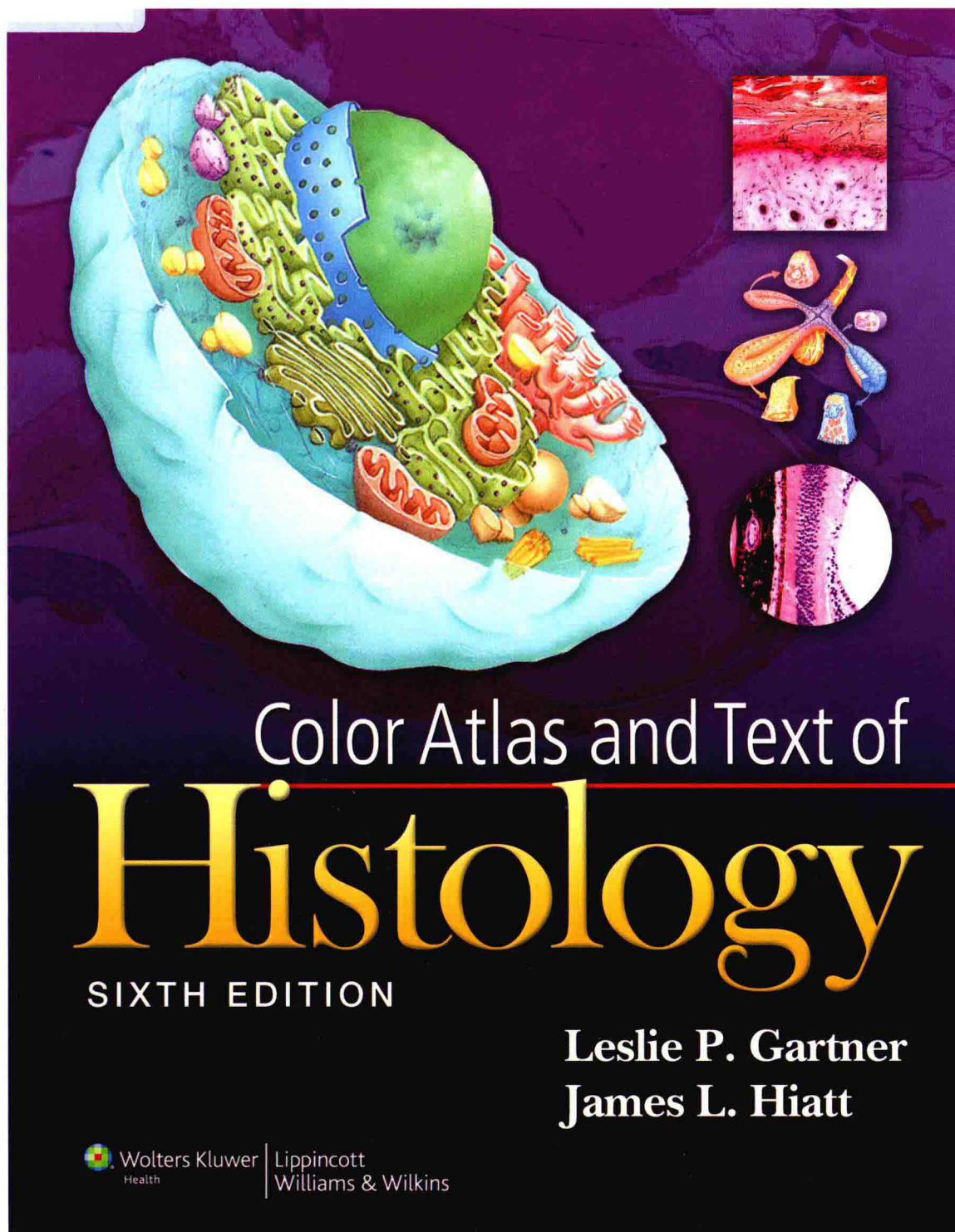


INTERNATIONAL EDITION

Not authorised for sale in United States, Canada, Australia, New Zealand, Puerto Rico or the U.S. Virgin Islands





Sixth Edition

Color Atlas and Text of Histology

LESLIE P. GARTNER, PH.D.

Professor of Anatomy (Retired)

Department of Biomedical Sciences

Baltimore College of Dental Surgery

Dental School

University of Maryland

Baltimore, Maryland

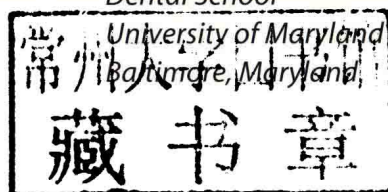
JAMES L. HIATT, PH.D.

Professor Emeritus

Department of Biomedical Sciences

Baltimore College of Dental Surgery

Dental School



Wolters Kluwer | Lippincott Williams & Wilkins

Health

Philadelphia • Baltimore • New York • London
Buenos Aires • Hong Kong • Sydney • Tokyo

Acquisitions Editor: Crystal Taylor
Product Manager: Catherine Noonan
Vendor Manager: Bridgett Dougherty
Art Director: Jennifer Clements
Marketing Manager: Joy Fisher-Williams
Designer: Joan Wendt
Compositor: SPi Global

Sixth Edition

Copyright © 2014, 2009, 2006, 2000, 1994, 1990 Lippincott Williams & Wilkins, a Wolters Kluwer business.

351 West Camden Street
Baltimore, MD 21201

Two Commerce Square
2001 Market Street
Philadelphia, PA 19103

Printed in China

Not authorised for sale in United States, Canada, Australia, New Zealand, Puerto Rico, and United States Virgin Islands.

Translations:

Chinese (Taiwan): Ho-Chi Book Publishing Company
Chinese (Mainland China): Liaoning Education Press/CITIC
Chinese (Simplified Chinese): CITIC/Chemical Industry Press
French: Wolters Kluwer France
Greek: Parissianos
Indonesian: Binarupa Publisher
Italian: Masson Italia; EdiSES
Japanese: Igaku-Shoin; Medical Sciences International (MEDSI)
Korean: E*Public, Co., Ltd
Portuguese: Editora Guanabara Koogan
Russian: Logosphaera
Spanish: Editorial Medica Panamericana; Gestora de Derechos Autorales; Libermed Verlag
Turkish: Gunes Bookshops

All rights reserved. This book is protected by copyright. No part of this book may be reproduced or transmitted in any form or by any means, including as photocopies or scanned-in or other electronic copies, or utilized by any information storage and retrieval system without written permission from the copyright owner, except for brief quotations embodied in critical articles and reviews. Materials appearing in this book prepared by individuals as part of their official duties as U.S. government employees are not covered by the above-mentioned copyright. To request permission, please contact Lippincott Williams & Wilkins at Two Commerce Square, 2001 Market Street, Philadelphia, PA 19103, via email at permissions@lww.com, or via website at lww.com (products and services).

Library of Congress Cataloging-in-Publication Data

Gartner, Leslie P., 1943-

Color atlas and text of histology / Leslie P. Gartner, James Hiatt. — 6th ed.

p. ; cm.

Includes index.

Rev. ed. of: Color atlas of histology / Leslie P. Gartner, James L. Hiatt. 5th ed. c2009.

ISBN 978-1-4511-1343-3

I. Hiatt, James L., 1934- II. Gartner, Leslie P., 1943-. Color atlas and text of histology. III. Title.

[DNLM: 1. Histology—Atlases. QS 517]

611'.0180222—dc23

2012031983

DISCLAIMER

Care has been taken to confirm the accuracy of the information present and to describe generally accepted practices. However, the authors, editors, and publisher are not responsible for errors or omissions or for any consequences from application of the information in this book and make no warranty, expressed or implied, with respect to the currency, completeness, or accuracy of the contents of the publication. Application of this information in a particular situation remains the professional responsibility of the practitioner; the clinical treatments described and recommended may not be considered absolute and universal recommendations.

The authors, editors, and publisher have exerted every effort to ensure that drug selection and dosage set forth in this text are in accordance with the current recommendations and practice at the time of publication. However, in view of ongoing research, changes in government regulations, and the constant flow of information relating to drug therapy and drug reactions, the reader is urged to check the package insert for each drug for any change in indications and dosage and for added warnings and precautions. This is particularly important when the recommended agent is a new or infrequently employed drug.

Some drugs and medical devices presented in this publication have Food and Drug Administration (FDA) clearance for limited use in restricted research settings. It is the responsibility of the health care provider to ascertain the FDA status of each drug or device planned for use in their clinical practice.

The publishers have made every effort to trace the copyright holders for borrowed material. If they have inadvertently overlooked any, they will be pleased to make the necessary arrangements at the first opportunity.

To purchase additional copies of this book, call our customer service department at (800) 638-3030 or fax orders to (301) 223-2320. International customers should call (301) 223-2300.

Visit Lippincott Williams & Wilkins on the Internet: <http://www.lww.com>. Lippincott Williams & Wilkins customer service representatives are available from 8:30 am to 6:00 pm, EST.

9 8 7 6 5 4 3 2 1

thePoint

LWW's Online Resources for both students and faculty, all housed in one robust, easy-to-access website.

<http://thePoint.lww.com/activate>

Use the code provided below to access the resources for *Color Atlas and Text of Histology, Sixth Edition*.

- Fully searchable online text & images
- Interactive atlas with images and review questions



Log on today!

Visit **<http://thepoint.lww.com>** to learn more about **thePoint** and the flexible learning solutions available from Lippincott Williams & Wilkins!



Sixth Edition

Color Atlas and Text of
Histology

*To my wife Roseann, my daughter Jen,
and my mother Mary
LPG*

*To my wife Nancy and my children
Drew, Beth, and Kurt
JLH*



Preface

We are very pleased to be able to present the sixth edition of our *Color Atlas and Text of Histology*, an atlas that has been in continuous use since its first publication as a black and white atlas in 1987. The success of that atlas prompted us to revise it considerably, retake all of the images in full color, change its name, and publish it in 1990 under the title *Color Atlas of Histology*. In the past 22 years, the Atlas has undergone many changes. We added color paintings, published a corresponding set of Kodachrome slides, and added histophysiology to the text. The advent of high-resolution digital photography allowed us to reshoot all of the photomicrographs for the fourth edition, and we created a CD-ROM that accompanied and was packaged with our Atlas. For the fifth edition, we updated the *Interactive Color Atlas of Histology* and made it available to the student on the Lippincott Williams & Wilkins Website, <http://thePoint.lww.com>, that could be accessed from anywhere in the world via an Internet connection. The online Atlas contained every photomicrograph and electron micrograph and accompanying legends present in the Atlas. The student had the capability to study selected chapters or to look up a particular item via a keyword search. Images could be viewed with or without labels and/or legends, enlarged using the “zoom” feature, and compared side-by-side to other images. Also, the updated software allowed students to self-test on all labels using the “hotspot” mode, facilitating learning and preparation for practical examinations. For examination purposes, the online Atlas contained over 300 additional photomicrographs with more than 700 interactive fill-in and true/false questions organized in a fashion to facilitate the student’s learning and preparation for practical exams. Additionally, we have included approximately 100 USMLE Step I format multiple choice questions, based on photomicrographs created specifically for the questions, which can be accessed in test or study mode.

We are grateful to the many faculty members throughout the world who have assigned our Atlas to their students whether in its original English or in its translated form, which now counts 11 languages. We have received many compliments and constructive suggestions not only

from faculty members but also from students, and we tried to incorporate those ideas into each new edition. One suggestion that we have resisted, however, was to change the order of the chapters. There were several faculty members who suggested a number of varied sequences; they all made sense to us, and it would have been very easy for us to adopt any one of the suggested chapter orders. However, we feel partial to and very comfortable with the classical sequence that we adopted so many years ago; it is just as valid and logical an arrangement as all the others that were suggested and, in the final analysis, we felt that instructors can simply tell their classes to use the chapters of the Atlas in a different sequence without harming the coherence of the material.

Major changes have been introduced in this, the sixth edition. The most exciting change is that we have completely rewritten and enhanced the textual material to such an extent that it can be used not only as an Atlas but also as an abbreviated textbook, which necessitated the title change to indicate that major alteration; therefore, the new title of the sixth edition is *Color Atlas and Text of Histology*. Additionally, we have enlarged the trim size of the book to its current size of 8½ × 11 inches, which permitted us to enlarge the photomicrographs so that the student can see details of the images to advantage. We have created new tables for each chapter. We have also included a new feature in the form of an Appendix that describes and illustrates many of the common stains used in the preparation of histological specimens. Probably the second most exciting change that we have introduced into this edition is the expansion of the Clinical Considerations components, many of which are now illustrated with histopathological images that we were graciously permitted to borrow from: Rubin, R., Strayer, D, et al., eds: *Rubin’s Pathology. Clinicopathologic Foundations of Medicine*, 5th ed. Baltimore, Lippincott, Williams & Wilkins, 2008; Mills, S.E. editor, Carter, D. Greenson, J.K. Reuter, V.E. Stoler, M.H. eds. *Sternberger’s Diagnostic Surgical Pathology*, 5th ed., Philadelphia, Lippincott, Williams & Wilkins, 2010; and Mills, S.E., ed: *Histology for Pathologists*, 3rd ed. Philadelphia, Lippincott, Williams & Wilkins, 2007.

As in the previous editions, most of the photomicrographs of this book are of tissues stained with hematoxylin and eosin. All indicated magnifications in light and electron micrographs are original magnifications. Many of the sections were prepared from plastic-embedded specimens, as noted. Most of the exquisite electron micrographs included in this book were kindly provided by our colleagues throughout the world as identified in the legends.

As with all of our textbooks, the Color Atlas and Text of Histology has been written with the student in mind; thus the material is complete but not esoteric. We wish to help the student learn and enjoy histology, not be

overwhelmed by it. Furthermore, this book is designed not only for use in the laboratory but also as preparation for both didactic and practical examinations. Although we have attempted to be accurate and complete, we know that errors and omissions may have escaped our attention. Therefore, we welcome criticisms, suggestions, and comments that could help improve this book. Please address them to LPG21136@yahoo.com.

Leslie P. Gartner
James L. Hiatt



Acknowledgments

We would like to thank Todd Smith for the rendering of the outstanding full-color plates and thumbnail figures, Jerry Gadd for his paintings of blood cells, and our many colleagues who provided us with electron micrographs. We are especially thankful to Dr. Stephen W. Carmichael of the Mayo Medical School for his suggestions concerning the suprarenal medulla and Dr. Cheng Hwee Ming of the University of Malaya Medical School for his comments on the distal tubule of the

kidney. Additionally, we are grateful to our good friends at Lippincott Williams & Wilkins, including our always cheerful, and exceptionally helpful, Product Manager, Catherine Noonan; Senior Acquisitions Editor, Crystal Taylor; Art Director, Jennifer Clements; and Editorial Assistant, Amanda Ingold. Finally, we wish to thank our families again for encouraging us during the preparation of this work. Their support always makes the labor an achievement.



Reviewers

Ritwik Baidya, MBBS, MS

Professor

Anatomy & Embryology

Saba University School of Medicine

Saba, Dutch Caribbeans

Roger J. Bick, MMedEd, MBS

Course Director for Histology

Associate Professor of Pathology

University of Texas Medical School at Houston

Houston, Texas

Marc J. Braunstein, MD, PhD

Internal Medicine Resident

Hofstra North Shore LIJ School of Medicine

Hempstead, New York

Paul Johnson

Neurology Resident

University of Washington

Seattle, Washington

Sonia Lazreg

Medical Student

Mount Sinai School of Medicine

New York, New York

David J. Orlicky, PhD

Associate Professor

University of Colorado at Denver and Health

Sciences Center

Denver, Colorado

Guy Sovak, PEng, BSc, MSc, PhD

Assistant Professor

Coordinator Special Projects

Department of Anatomy

Canadian Memorial Chiropractic College

Toronto, Canada



Contents

<i>Preface</i>	<i>vii</i>
<i>Acknowledgments</i>	<i>ix</i>
<i>Reviewers</i>	<i>xi</i>
CHAPTER 1 The Cell	2
GRAPHIC 1-1 The Cell	12
1-2 The Organelles	13
1-3 Membranes and Membrane Trafficking	14
1-4 Protein Synthesis and Exocytosis	15
PLATE 1-1 Typical Cell	16
1-2 Cell Organelles and Inclusions	18
1-3 Cell Surface Modifications	20
1-4 Mitosis, Light and Electron Microscopy	22
1-5 Typical Cell, Electron Microscopy	24
1-6 Nucleus and Cytoplasm, Electron Microscopy	26
1-7 Nucleus and Cytoplasm, Electron Microscopy	28
1-8 Golgi Apparatus, Electron Microscopy	30
1-9 Mitochondria, Electron Microscopy	32
CHAPTER 2 Epithelium and Glands	34
GRAPHIC 2-1 Junctional Complex	42
2-2 Salivary Gland	43
PLATE 2-1 Simple Epithelia and Pseudostratified Epithelium	44
2-2 Stratified Epithelia and Transitional Epithelium	46
2-3 Pseudostratified Ciliated Columnar Epithelium, Electron Microscopy	48
2-4 Epithelial Junctions, Electron Microscopy	50
2-5 Glands	52
2-6 Glands	54
CHAPTER 3 Connective Tissue	58
GRAPHIC 3-1 Collagen	66
3-2 Connective Tissue Cells	67
PLATE 3-1 Embryonic and Connective Tissue Proper I	68

3-2	Connective Tissue Proper II	70
3-3	Connective Tissue Proper III	72
3-4	Fibroblasts and Collagen, Electron Microscopy	74
3-5	Mast Cell, Electron Microscopy	75
3-6	Mast Cell Degranulation, Electron Microscopy	76
3-7	Developing Fat Cell, Electron Microscopy	77

CHAPTER 4 Cartilage and Bone 80

GRAPHIC	4-1	Compact Bone	88
	4-2	Endochondral Bone Formation	89
PLATE	4-1	Embryonic and Hyaline Cartilages	90
	4-2	Elastic and Fibrocartilages	92
	4-3	Compact Bone	94
	4-4	Compact Bone and Intramembranous Ossification	96
	4-5	Endochondral Ossification	98
	4-6	Endochondral Ossification	100
	4-7	Hyaline Cartilage, Electron Microscopy	102
	4-8	Osteoblasts, Electron Microscopy	103
	4-9	Osteoclast, Electron Microscopy	104

CHAPTER 5 Blood and Hemopoiesis 108

PLATE	5-1	Circulating Blood	116
	5-2	Circulating Blood (Drawing)	118
	5-3	Blood and Hemopoiesis	119
	5-4	Bone Marrow and Circulating Blood	120
	5-5	Erythropoiesis	122
	5-6	Granulocytopoiesis	123

CHAPTER 6 Muscle 126

GRAPHIC	6-1	Molecular Structure of Skeletal Muscle	132
	6-2	Types of Muscle	133
PLATE	6-1	Skeletal Muscle	134
	6-2	Skeletal Muscle, Electron Microscopy	136
	6-3	Myoneural Junction, Light and Electron Microscopy	138
	6-4	Myoneural Junction, Scanning Electron Microscopy	140
	6-5	Muscle Spindle, Light and Electron Microscopy	141
	6-6	Smooth Muscle	142
	6-7	Smooth Muscle, Electron Microscopy	144
	6-8	Cardiac Muscle	146
	6-9	Cardiac Muscle, Electron Microscopy	148

CHAPTER 7 Nervous Tissue 150

GRAPHIC	7-1	Spinal Nerve Morphology	156
	7-2	Neurons and Myoneural Junctions	157

PLATE	7-1	Spinal Cord	158
	7-2	Cerebellum, Synapse, Electron Microscopy	160
	7-3	Cerebrum, Neuroglial Cells	162
	7-4	Sympathetic Ganglia, Sensory Ganglia	164
	7-5	Peripheral Nerve, Choroid Plexus	166
	7-6	Peripheral Nerve, Electron Microscopy	168
	7-7	Neuron Cell Body, Electron Microscopy	170

CHAPTER 8 Circulatory System 174

GRAPHIC	8-1	Artery and Vein	182
	8-2	Capillary Types	183
PLATE	8-1	Elastic Artery	184
	8-2	Muscular Artery, Vein	186
	8-3	Arterioles, Venules, Capillaries, and Lymph Vessels	188
	8-4	Heart	190
	8-5	Capillary, Electron Microscopy	192
	8-6	Freeze Etch, Fenestrated Capillary, Electron Microscopy	194

CHAPTER 9 Lymphoid Tissue 198

GRAPHIC	9-1	Lymphoid Tissues	208
	9-2	Lymph Node, Thymus, and Spleen	209
	9-3	B Memory and Plasma Cell Formation	210
	9-4	Cytotoxic T-Cell Activation and Killing of Virally Transformed Cell	211
	9-5	Macrophage Activation by T _H 1 Cells	212
PLATE	9-1	Lymphatic Infiltration, Lymphatic Nodule	214
	9-2	Lymph Node	216
	9-3	Lymph Node, Tonsils	218
	9-4	Lymph Node, Electron Microscopy	220
	9-5	Thymus	222
	9-6	Spleen	224

CHAPTER 10 Endocrine System 228

GRAPHIC	10-1	Pituitary Gland and Its Hormones	237
	10-2	Endocrine Glands	238
	10-3	Sympathetic Innervation of the Viscera and the Medulla of the Suprarenal Gland	239
PLATE	10-1	Pituitary Gland	240
	10-2	Pituitary Gland	242
	10-3	Thyroid Gland, Parathyroid Gland	244
	10-4	Suprarenal Gland	246
	10-5	Suprarenal Gland, Pineal Body	248
	10-6	Pituitary Gland, Electron Microscopy	250
	10-7	Pituitary Gland, Electron Microscopy	251

CHAPTER 11 Integument	254
GRAPHIC 11-1 Skin and Its Derivatives	262
11-2 Hair, Sweat Glands, and Sebaceous Glands	263
PLATE 11-1 Thick Skin	264
11-2 Thin Skin	266
11-3 Hair Follicles and Associated Structures, Sweat Glands	268
11-4 Nail, Pacinian and Meissner's Corpuscles	270
11-5 Sweat Gland, Electron Microscopy	272
CHAPTER 12 Respiratory System	276
GRAPHIC 12-1 Conducting Portion of Respiratory System	284
12-2 Respiratory Portion of Respiratory System	285
PLATE 12-1 Olfactory Mucosa, Larynx	286
12-2 Trachea	288
12-3 Respiratory Epithelium and Cilia, Electron Microscopy	290
12-4 Bronchi, Bronchioles	292
12-5 Lung Tissue	294
12-6 Blood-Air Barrier, Electron Microscopy	296
CHAPTER 13 Digestive System I	300
GRAPHIC 13-1 Tooth and Tooth Development	308
13-2 Tongue and Taste Bud	309
PLATE 13-1 Lip	310
13-2 Tooth and Pulp	312
13-3 Periodontal Ligament and Gingiva	314
13-4 Tooth Development	316
13-5 Tongue	318
13-6 Tongue and Palate	320
13-7 Teeth and Nasal Aspect of the Hard Palate	322
13-8 Teeth Scanning Electron Micrograph of Enamel	324
13-9 Teeth Scanning Electron Micrograph of Dentin	325
CHAPTER 14 Digestive System II	328
GRAPHIC 14-1 Stomach and Small Intestine	336
14-2 Large Intestine	337
PLATE 14-1 Esophagus	338
14-2 Stomach	340
14-3 Stomach	342
14-4 Duodenum	344
14-5 Jejunum, Ileum	346
14-6 Colon, Appendix	348
14-7 Colon, Electron Microscopy	350
14-8 Colon, Scanning Electron Microscopy	351

CHAPTER 15 Digestive System III	356
GRAPHIC 15-1 Pancreas	364
15-2 Liver	365
PLATE 15-1 Salivary Glands	366
15-2 Pancreas	368
15-3 Liver	370
15-4 Liver, Gallbladder	372
15-5 Salivary Gland, Electron Microscopy	374
15-6 Liver, Electron Microscopy	376
15-7 Islet of Langerhans, Electron Microscopy	377
CHAPTER 16 Urinary System	380
GRAPHIC 16-1 Uriniferous Tubules	390
16-2 Renal Corpuscle	391
PLATE 16-1 Kidney, Survey and General Morphology	392
16-2 Renal Cortex	394
16-3 Glomerulus, Scanning Electron Microscopy	396
16-4 Renal Corpuscle, Electron Microscopy	397
16-5 Renal Medulla	398
16-6 Ureter and Urinary Bladder	400
CHAPTER 17 Female Reproductive System	404
GRAPHIC 17-1 Female Reproductive System	414
17-2 Placenta and Hormonal Cycle	415
PLATE 17-1 Ovary	416
17-2 Ovary and Corpus Luteum	418
17-3 Ovary and Oviduct	420
17-4 Oviduct, Light and Electron Microscopy	422
17-5 Uterus	424
17-6 Uterus	426
17-7 Placenta and Vagina	428
17-8 Mammary Gland	430
CHAPTER 18 Male Reproductive System	434
GRAPHIC 18-1 Male Reproductive System	440
18-2 Spermiogenesis	441
PLATE 18-1 Testis	442
18-2 Testis and Epididymis	444
18-3 Epididymis, Ductus Deferens, and Seminal Vesicle	446
18-4 Prostate, Penis, and Urethra	448
18-5 Epididymis, Electron Microscopy	450

CHAPTER 19 Special Senses	454
GRAPHIC 19-1 Eye	462
19-2 Ear	463
PLATE 19-1 Eye, Cornea, Sclera, Iris, and Ciliary Body	464
19-2 Retina, Light and Scanning Electron Microscopy	466
19-3 Fovea, Lens, Eyelid, and Lacrimal Glands	468
19-4 Inner Ear	470
19-5 Cochlea	472
19-6 Spiral Organ of Corti	474
<i>Appendix</i>	479
<i>Index</i>	484

Sixth Edition

Color Atlas and Text of
Histology