

FOUR-YEAR COLLEGES

1 • 9 • 9 • 1

21st Annual Edition

2

In-Depth Descriptions of the Colleges

The following two-page descriptive messages have been written by college officials who chose to present more detailed information, including student life, majors and degrees available, academic programs and facilities, and admission and application requirements, to complement the data about their institutions that appear in other parts of the guide. The reader should keep in mind that these two-page descriptions have been voluntarily submitted, not editorially selected; the absence of a description from a college does not reflect judgment of any sort on the part of Peterson's Guides.

The descriptions are arranged in alphabetical order, according to the official name of the institution.



ABILENE CHRISTIAN UNIVERSITY

Abilene, Texas

The University

Abilene Christian University was founded in 1906 in Abilene, Texas, to provide students with a nondenominational Christian education emphasizing the liberal arts in a Christian environment. Although the University is not owned or controlled by any church or religious group, it is closely related to the churches of Christ and, with an enrollment of about 4,200 (3,700 undergraduates), is the fourth-largest private university in the Southwest. The University is composed of seven colleges: the College of Liberal and Fine Arts, the College of Natural and Applied Sciences, the College of Biblical Studies, the College of Professional Studies, the College of Business Administration, the Graduate School, and the School of Nursing.

Abilene Christian University is a residential university where students have an opportunity to meet others with similar interests and goals and to develop lifelong friendships. Students learn to value excellence, integrity, self-reliance, truth, love, beauty, and health. They are encouraged to learn to listen, observe, inquire, evaluate, think logically and creatively, analyze and organize experience, read critically and widely, and write and speak effectively. Students at ACU also prepare themselves for a career. Graduates of Abilene Christian University hold positions of leadership and service throughout the world and are highly regarded by their employers not only for their academic and professional competence but also for their commitment, integrity, and high standards.

The University puts a great deal of effort into maintaining an environment, on campus, in classrooms, and in dormitories, that encourages learning, personal development, physical well-being, and growth in Christian character. This includes recreation and entertainment, but students are expected to balance their extracurricular activities with their academic activities.

Men's athletic teams compete in NCAA Division II in football, basketball, track, cross-country, golf, and tennis. Women's teams compete in NCAA Division II in basketball, volleyball, track, cross-country, and tennis. Scholarships for men and women are available in all varsity sports.

Location

Abilene, Texas, has the reputation of being a friendly city. It is located 150 miles west of Fort Worth on Interstate 20 and has a population of about 109,000. Its climate is relatively warm and dry, although the temperature does occasionally drop below freezing in the winter. Residents of Abilene are served by a variety of shopping malls, major restaurant chains, and specialty shops. The city has a Philharmonic orchestra, a ballet company, an art museum, opera, several theater and dinner theater companies, and a zoological garden. The West Texas Fair is a major annual event, and historic Buffalo Gap, a pioneer settlement, offers camping and water sports.

Majors and Degrees

The Bachelor of Arts degree is awarded in advertising, art, art history, art/marketing, biblical studies, biochemistry, biology, chemistry, Christian ministry, communication disorders, computer science, drama, English, French, German, graphic design, graphic design/advertising, Greek, history, human communication, instrumental music, international studies, missions, music, news-editorial studies, photojournalism, political science, public relations, puppet ministry, radio-television, Spanish, and youth and family ministry.

The Bachelor of Science degree is available in agricultural business; agronomy; animal science; applied mathematics; art; biblical studies; biochemistry; biology; chemistry; Christian ministry; community health; computer science; criminal justice; fashion merchandising; food, nutrition, and dietetics; general agriculture; general home economics; Greek; human development and family studies; industrial technology; interior design; mathematics; medical technology; missions; nursing; physical education (nonteaching); physics (engineering physics); psychology; recreation; religious education; social work; sociology; and youth and family ministry. Also, the Bachelor of Science in Education is offered in elementary and secondary education with specialization in numerous areas.

The Bachelor of Business Administration is offered in accounting and business administration. The Bachelor of Fine Arts is available in several areas through the Department of Art, and the Bachelor of Music in Education is granted in band, music and business administration, orchestral instrument, piano, and voice.

The Associate of Science degree is offered in agriculture—range animal production, business administration (word processing), home economics/family studies (child development), industrial technology (construction technology and general drafting technology), and nursing. The Associate of Arts is also available in Bible studies.

ACU offers several preprofessional programs leading to the various health professions (e.g., pre dental, preoptometric, and pre-veterinary medicine), engineering, and architecture. In general, students attend ACU for one to four years and then transfer to a professional school to complete their degree. During the past decade, more than 80 percent of ACU graduates who applied to medical and dental schools were accepted, compared to a national acceptance rate of about 35 percent.

Academic Program

Abilene Christian University is accredited by the Southern Association of Colleges and Schools, and work completed at ACU is accepted by all colleges and universities in the United States.

A minimum of 128 semester hours is required for most baccalaureate degrees, with 30 of these hours in a major and a total of 33 hours in upper-division work. All degrees require 15 hours of Bible studies, and most require courses in communication/speech, English, mathematics, physical education, science, and social and behavioral science.

ACU serves a broad spectrum of students. For the underprepared, there are developmental programs offered by a well-equipped learning center. To help challenge the exceptionally bright student, there is a comprehensive honors program. The University also provides a broad range of opportunities for interaction and enrichment through lectureships, conferences, workshops, seminars, forums, summer camps, intramural sports, and intercollegiate athletic events and by making available libraries, museums, dramatic productions, concerts, and lectures.

Academic Facilities

Resources of the Abilene Christian University Library include books, microforms, audiovisual materials, government documents, and bound periodicals, totaling more than 900,000 items. A current subscription list of more than 1,600 journals adds to the research opportunities of students and faculty.

The Learning Enhancement Center offers academic support services for most courses, from freshman through graduate levels. These services include free tutoring; numerous audiovisual materials such as audiocassettes, filmstrips, and videocassettes; modular programs; supplementary books and references; and instructor-prepared study materials. In addition, computer-assisted instructional resources and test-anxiety counseling are also available, including programs that assist students in preparing for preprofessional tests.

Physical education and athletic activities are centered in the huge physical education complex, which contains several gymnasiums, training rooms, racquetball courts, a swimming pool, and a coliseum. The four-story science facility contains laboratories, an outstanding collection of experimental equipment, an observatory, and computer facilities, including microprocessor laboratories. A three-story complex houses art studios and classrooms, a computerized newspaper workshop, a low-power VHF TV station that broadcasts on a local station and on cable, an AM/FM radio station, communication classrooms, and a complete home economics division.

Agriculture facilities include a 100-acre farm adjacent to the campus and a 400-acre research complex.

The College of Biblical Studies moved into its new 91,000-square-foot building in the summer of 1989. This classroom and office facility provides space for the Department of Undergraduate Bible and Ministry, the Department of Graduate Bible and Ministry, the Department of Missions, the Department of Marriage and Family, and the dean's administrative offices. The building includes classrooms with the latest video and computer technology, a 350-seat chapel, a lecture auditorium that seats 350, and a 150-seat lecture hall. Also included in the facility is an outdoor amphitheater that seats approximately 1,000. Seven rooms for student meditation, an undergraduate student study hall, fifty faculty and administrative offices, and a separate commons for faculty, staff, and graduate students are additional features of the facility, as are a mission strategy room, therapy rooms for marriage and family studies, and a visitor's lounge. A 150-foot Tower of Light identifies the building as the focal point of University life.

Another recent addition to the campus is the 55,000-square-foot Mabey Business Building, a three-story classroom building serving as many as 1,700 business majors, which is connected by a glass and aluminum commons to a two-story faculty office building. The 34,000-square-foot academic wing houses classrooms, a 140-seat auditorium/lecture hall, and a 90-seat lecture hall. The classrooms are equipped with the latest in audiovisual and computer equipment. The academic wing also includes the Technology Learning Center with 94 computer workstations, two seminar rooms, a student study area providing current business periodicals and journals, and a student concession area.

Costs	The typical expenses for 1990-91 for two semesters include tuition (30 semester hours), \$4860; fees, \$1200; room, \$1200; board, \$1500; books, \$300; and miscellaneous course fees, \$65, for a total of \$9125. Personal expenses vary according to an individual's needs.
Financial Aid	Financial assistance is given in four forms: loans, grants, scholarships, and employment. Academic scholarships are awarded according to high school GPA, scores on standardized tests such as the ACT examination and the SAT, and leadership activities. Full tuition scholarships are offered to National Merit Finalists. More than 60 percent of ACU students are assisted through financial aid. All financial aid forms may be obtained through the ACU Financial Aid Office. It is suggested, and even required for some financial aid programs, that applicants for aid fill out the Family Financial Statement (FFS) of the American College Testing Program.
Faculty	ACU has a faculty of outstanding teachers, scholars, and specialists. Of the 179 full-time and 70 part-time faculty members, about 70 percent hold a doctorate or the highest terminal degree in their field. The ACU faculty is committed to educating the whole student, academically, socially, and spiritually. Students are encouraged to learn the practical as well as the theoretical, the ethical as well as the professional, the spiritual as well as the rational. A student-teacher ratio of 19:1 allows students ready access to their teachers. Faculty members counsel students extensively on careers, academics, and personal problems.
Student Government	Abilene Christian University has an active, progressive Students' Association, of which every full-time student is a member. Officers of the association and the Student Senate carry out various programs. The Student Foundation promotes awareness of the purposes of ACU and maintains communication among the administration, students, and alumni.
Admission Requirements	To qualify for admission, a student must have graduated from high school and must submit information concerning ACT or SAT scores and high school class rank. Generally, transfer students are required to have a 2.0 grade point average or better. Abilene Christian University does not discriminate on the basis of race, color, age, or national or ethnic origin in its admissions, employment opportunities, educational programs, or activities that it sponsors.
Application and Information	Prospective students should write or call the office below for application forms and financial aid information, indicating their academic and social areas of interest. Applicants should submit all the necessary forms with a nonrefundable \$25 processing fee and should see that their academic records (ACT or SAT scores, transcript, and class rank) are sent to the University. Dormitory room reservations, accompanied by a \$100 deposit, should be made early to ensure the availability and choice of a dormitory room. Students are encouraged to visit the campus at any time.

University Outreach
Abilene Christian University
ACU Station, Box 6000
Abilene, Texas 79699-6000
Telephone: 915-674-2650
800-333-4228 (toll-free)



ADAMS STATE COLLEGE

Alamosa, Colorado

The College

Adams State College is dedicated to offering a high-quality education with a personal touch. The academic and social atmosphere of the campus allows each student to feel at home. The College has excellent physical facilities. Attractive academic buildings are complemented by a complete and comfortable College Center. The student body is composed of individuals from various ethnic and racial backgrounds. The 1989-90 enrollment was 2,507, including 409 graduate students. Forty-four percent of the undergraduate students are men. The dignity of each person as an individual is paramount, and equal consideration is extended to all. The close working relationship between students and the members of the faculty and administration is indicative of the importance of the individual at Adams State. At the graduate level, Adams State offers programs in teaching areas leading to the Master of Arts degree in elementary education, guidance and counseling, secondary education, and special education/education of the educationally handicapped. Graduate programs in liberal arts include emphases in art and health, physical education, and recreation.

Adams State College is accredited by the North Central Association of Colleges and Schools, and its programs in education are accredited by the National Council for Accreditation of Teacher Education. The College is an institutional member of the American Council on Education and the American Association of Colleges for Teacher Education. It is approved by the American Association of University Women. Adams State is also a member of the Midwest Conference on Graduate Study and Research and the Western Association of Graduate Schools.

Location

The College is located in the city of Alamosa, which has a population of approximately 8,000. Alamosa is in the center of the San Luis Valley, about 220 miles south and slightly west of Denver. The city is located at the junction of U.S. Highways 160 and 285 on the route of the Old Navajo Trail. Both bus and airline services are available to and from Alamosa. The College is located close to the art centers at Taos and Santa Fe and near excellent recreational opportunities for hiking, mountain climbing, rafting, fishing, and hunting. The Wolf Creek ski area is within an hour's drive of the campus. The San Luis Valley is almost level and is larger than the state of Connecticut. It is surrounded by ranges of mountains that rise more than 6,500 feet above the elevation of Alamosa, which is 7,500 feet above sea level. In the beautiful Sangre de Cristo range to the east, majestic Mount Blanca towers 14,363 feet above sea level. This mountain is nearly equal in height and is rivaled in beauty by the rugged Crestone Peak and Crestone needles in the same range. The Continental Divide, winding through the San Juan mountain range, is the western boundary of the valley. The floor of the valley is occupied by fertile grain and vegetable farms and extensive grazing lands. Through the center of the valley flows the Rio Grande del Norte.

Majors and Degrees

Bachelor of Arts or Bachelor of Science degrees are awarded in art (emphasis in art education, art history, ceramics, design, drawing, fiber, metalsmithing, painting, photography, printmaking, sculpture, or water media), biology (emphasis required in either allied health, botany, field/environmental science, general biology, science education, or zoology), business administration (emphasis required in either accounting, advertising, business computer systems, business education, economics, finance, general business, management, marketing, office management, pre-international business, or small business), chemistry (emphasis in allied health, environmental science, general chemistry, or science education), elementary education certification, English (emphasis required in either journalism, liberal arts, or secondary teacher certification), geology (emphasis in earth science or environmental science), Hispanic/Southwest studies, history/government (emphasis in history, government, or social studies education), industrial technology (emphasis in industrial education), mathematics (emphasis in computer science or math education), medical technology, music (emphasis in music education, instrumental, performance, or vocal), physical education (emphasis in athletic training, coaching, exercise physiology and leisure science, sport and exercise management, or teacher certification), physics (emphasis in science education), psychology (emphasis in social studies education), selected studies, sociology, Spanish (emphasis in foreign language for secondary teacher certification), and speech/theater. Associate of Arts degree programs are also available. Preprofessional studies are offered in dentistry, engineering, law, medicine, nursing, optometry, osteopathy, pharmacy, physical therapy, and veterinary medicine.

Academic Program

The academic year is divided into fall and spring semesters. Normally, the baccalaureate degree is earned in eight semesters, while the Associate of Arts degree is earned in four. The associate degree is conferred upon completion of an approved curriculum with a total of 60 hours of academic credit and, in some A.A. programs, 2 additional hours of credit in physical education activities. The Bachelor of Arts or Bachelor of Science degree is conferred upon completion of an approved curriculum with a total of 120 hours of academic credit plus 2 to 4 semester hours of credit in physical education activities. A minimum cumulative scholastic average of 2.0 must be earned in all courses taken at Adams State College for the A.A., B.S., and B.A. degrees in all areas except teacher education, for which a minimum cumulative grade point average of 2.75 must be earned in all work attempted. All requirements of the general education courses and the major must be satisfied. Students transferring from a two-year college must earn at least 60 additional semester hours to graduate from Adams State College with a bachelor's degree. Opportunities are available for independent study, special-topics courses, and discussion groups on current issues.

Off-Campus Arrangements

A number of low-cost tours to nearby points of historical, archaeological, and ethnological interest are arranged by the College, usually in the spring and summer months.

Academic Facilities

The library, which serves as a government depository, has 150,000 books, 55,114 bound periodicals, 310,000 government documents, 400,000 ERIC microfiche, and 8,000 other nonbook items.

Costs

For the 1989-90 academic year, the comprehensive cost of tuition, fees, room, and board for dormitory students who are Colorado residents was approximately \$4000. For nonresident students the approximate cost was \$6100. Married students' housing units, with utilities furnished, were available at \$271 per month.

Financial Aid

Opportunities for financial aid are provided through scholarships, grants, loan funds, and part-time employment. Entering freshmen may gain consideration for all types of financial aid by completing the Family Financial Statement of the American College Testing Program and submitting it to the American College Testing Program, Iowa City, Iowa, by March 1 of the year of expected fall enrollment. All undergraduate

students are also encouraged to apply for a Pell Grant. One hundred scholarships (entitled National Scholarships) are available for nonresidents of Colorado who reside in Adams State residence halls. The value of each of these scholarships is one half the cost of nonresident tuition (approximately \$1600). To be eligible for one of these scholarships, an entering freshman must have ranked in the top 40 percent of his or her high school graduating class or ranked in the top 40 percent on the ACT or SAT (national norms for ACT composite or SAT combined scores). Transfer students may qualify for the scholarship if they have maintained a GPA of 2.5 or higher for 12 or more semester hours of academic credit.

Faculty

Adams State College has 94 full-time faculty members. Of these, 62 percent hold the doctorate, 1 percent a specialist's degree, and 37 percent a master's degree. Faculty members have received degrees from more than 100 colleges and universities. In addition to carrying out their teaching assignments, faculty members serve as counselors and advisers and as members of many committees.

Student Government

Each student at Adams State College becomes a member of the Associated Students and Faculty organization upon registration. The organization was founded to promote cooperation between students and faculty members of the College. The general social life, social programs, and other student activities are directed by this organization. Elected officers and representatives of the student body and elected faculty members form the Associated Students and Faculty Senate, which regulates matters pertaining to student life.

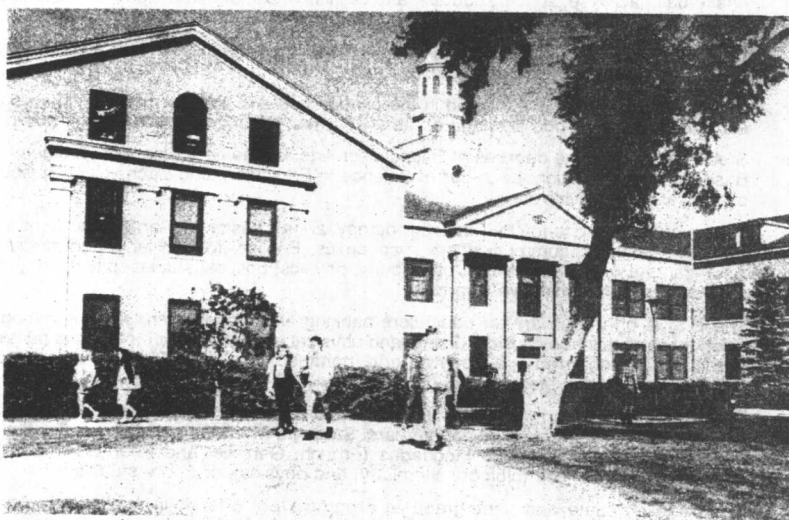
Admission Requirements

Applicants to a bachelor's degree program should meet the following criteria: a class rank in the upper two thirds of their high school graduating class or a grade point average of at least 2.5 and a composite ACT score of at least 21 or a combined SAT score of at least 850. Students ranking in the lower third of their high school graduating class and who have less than a 2.5 average may be considered for admission to the A.A. degree program under the condition that they may be required to register for remedial classes. Upon successful completion of at least one semester of academic work at Adams State College with a minimum 2.0 grade point average, an A.A. student may transfer to the baccalaureate degree program. Prospective transfer students must have at least a C (2.0) average to be unconditionally accepted for admission to Adams State College. Those not meeting this criterion are considered individually. In the case of repeated courses, honor points for grade point averages are compiled on the basis of performance in the repeat.

Application and Information

Applications for admission to Adams State should be completed well in advance of the beginning of the semester to which admission is sought. Applications received less than thirty days prior to the beginning of a semester may cause a delay in registration. No applications can be processed during registration. Freshman applicants must submit the application for undergraduate admission to Colorado collegiate institutions, which is available from most Colorado high school counselors or from the Adams State College Admissions Office. The freshman applicant should submit this completed application along with a nonrefundable \$10 application fee and have his or her high school mail a copy of the high school transcript directly to the Admissions Office at Adams State. The student should also submit ACT or SAT scores to the Admissions Office. Transfer applicants must also submit the application for undergraduate admission to Colorado collegiate institutions and a nonrefundable \$10 application fee. In addition, the student must request that all colleges previously attended forward transcripts to support the student's request for admission. If the student has completed fewer than 12 semester hours of credit, he or she must also submit an official high school transcript and ACT or SAT scores. Application forms, financial aid forms, and other information will be mailed upon request. Inquiries should be sent to:

Admissions Office
Adams State College
Alamosa, Colorado 81102
Telephone: 719-589-7712
800-824-6494 (toll-free)



Students between classes at Adams State College.



ADELPHI UNIVERSITY

Garden City, New York

The University

As Adelphi University approaches its centennial, it looks back on ninety-four years of educational accomplishment. Adelphi College in Brooklyn evolved from the original Adelphi Academy, a preparatory school for boys that was founded during the Civil War. Following World War II, the College's enrollment and its campus both grew rapidly. The College became Adelphi University in 1963.

Adelphi University is the oldest private institution of higher learning on Long Island. Today, Adelphi is on the cutting edge of innovative education, its commitment to excellence motivating faculty and students just as it did in 1896.

A nonsectarian, independent university, Adelphi welcomes men and women of all backgrounds and races who display intellectual inquisitiveness, academic commitment, and a desire for achievement and purpose in life. The University offers education to 8,739 students. Thirty-three states and fifty-five foreign countries are represented in its diverse student body. The campus, which has twenty-two buildings, is located on 75 greenbelt acres in Garden City, New York, 20 miles east of New York City and easily accessible by public transportation. The University also has two modern extension centers, one in Manhattan and one in Huntington, New York.

Adelphi University is composed of seven schools: the College of Arts and Sciences, the Schools of Business, the Institute for Teaching and Education Studies, the School of Social Work, the Marion A. Buckley School of Nursing, University College, and the Gordon F. Derner Institute of Advanced Psychological Studies.

The Graduate School of Arts and Sciences offers programs leading to the M.A., M.S., D.A., and Ph.D. degrees. The Graduate Schools of Business offer the M.S. in accounting, M.S. in banking and money management, M.B.A., and M.B.A./CPA programs. Graduate degrees in the School of Social Work are the M.S.W. and D.S.W., and the School of Nursing offers the M.S. and Ph.D. degrees. The Institute for Teaching and Education Studies offers a variety of programs leading to the M.A. and M.S. degrees. The Derner Institute of Advanced Psychological Studies offers the Ph.D. and postdoctoral programs. Certificate programs are offered in several of these graduate areas.

Five campus residence halls house more than 1,245 students. The University has recently expanded its residence capacity by adding 225 new, air-conditioned, modern spaces. Recreational, cultural, educational, and social events are organized for resident and commuter students throughout each semester.

Adelphi has numerous student organizations geared to specific academic interests. The Pre-Law Society, the Italian Club, and the Psychology Club, among others, expand students' knowledge. University life is enhanced by a variety of other student clubs, including the International Students Society, the Resident Students Association, the African People's Organization, Hillel, La Union Latina, the Student Political Association, the Equestrian Club, the Science Fiction Club, and the Asian Students Association. In addition, there are fifteen Greek-letter social sororities and fraternities and fifteen honor societies on campus.

The Adelphi student newspaper (*Delphian*), the yearbook (*Oracle*), and *Ascend*, the student literary magazine, welcome writers and photographers. The campus radio station (WBAU-AM and WBAU-FM) is staffed by students and offers news, sports, and music to the University and off-campus communities.

A strong program in intercollegiate athletics for both men and women fields varsity teams in baseball, basketball, lacrosse, soccer, softball, and tennis. There is also a vigorous intramural program that attracts hundreds of students each season.

Adelphi University is chartered by the University of the State of New York and is fully accredited by the Middle States Association of Colleges and Schools.

Location

Adelphi's main campus is located in the picturesque and architecturally distinctive suburban community of Garden City, New York, a village of stately homes, historic buildings, parks, and golf courses.

Majors and Degrees

Studies leading to the degrees of Bachelor of Arts, Bachelor of Fine Arts, Bachelor of Science, Bachelor of Business Administration, Bachelor of Science in Education, and Bachelor of Science in Social Welfare are offered at Adelphi University.

Majors offered lead to the B.A. in anthropology, art-art design, art-art education, art-art history, art-fine arts, biology, chemistry, communications, economics, English, foreign language studies, French, history, Latin American studies, mathematics, philosophy, physics, political studies, psychology, sociology, Spanish, and speech arts/communicative disorders.

The B.S. is offered in art-art education, banking and money management, biology, chemistry, computer science, earth science, music, nursing, and physical education, recreation, and human performance science. The B.B.A. is conferred in accounting and management. The B.F.A. is granted in dance and theater. The B.S.Ed. is granted in elementary education. The B.S.W. is offered in social welfare.

Teacher-training programs lead to provisional state certification in the fields of elementary and secondary education at the end of four calendar years. Students who wish to obtain certification in secondary education major in art, English, foreign languages (French, German, and Spanish), mathematics, music, physical education, the sciences (biology, chemistry, and physics), or social studies.

Combined graduate and undergraduate programs are offered in applied psychology, business, nursing, physics, and social work.

Adelphi also offers a seven-year optometry program leading to the B.S. and D.O. degrees in cooperation with the State University of New York's College of Optometry and a seven-year dental program leading to the B.S. and D.M.D. degrees in cooperation with the Tufts University School of Dental Medicine.

Preprofessional programs are available in business, communications, computer science, dentistry, engineering, law, medicine, optometry, social work, teaching, and veterinary medicine.

University College provides degree programs for students over 21 years of age. It offers the Associate of Arts and Bachelor of Arts in early childhood/elementary education, humanistic studies, fine arts, and the social sciences and the Bachelor of Science in management and communications.

Academic Program

The goal of the academic program at Adelphi is to provide higher education, based on a liberal arts foundation, that cultivates the intellect and readies students for the future. The University's commitment to the individual student is demonstrated by its small classes, programs of individual study, an honors program, and the chance to undertake up to 12 hours of independent study.

A minimum of 120 credits is required for a baccalaureate degree, with a specified number in the chosen major. Double majors and various minors can be elected. Seniors of superior academic ability may be admitted to graduate courses in their major field. All entering students must fulfill a two-semester (6-credit) English composition requirement. Students in the College of Arts and Sciences must complete a minimum of 29 credits in distribution requirements: 12 credits in the humanities and arts, a minimum of 8 credits in mathematics and natural sciences, and 9 credits in social sciences.

Advanced placement credit may be granted for test scores of 3 or better.

Off-Campus Arrangements

Adelphi University offers summer study-abroad programs in Western and Central Europe, Asia, Latin America, and Africa. Qualified Adelphi students may also apply for admission to overseas programs sponsored by other accredited universities.

Academic Facilities

The University libraries are composed of the Swirbul Library, the Science Library, and the libraries at the Adelphi Manhattan and Huntington centers. These libraries contain more than 583,000 volumes and 568,000 items in microformat, plus 35,000 audiovisual items and nearly 3,000 periodical subscriptions. The University libraries are fully automated. Total holdings are accessible through ALICAT (the Adelphi Libraries Catalog Online). As an enhancement of the traditional reference services, computerized information retrieval services are available for accessing some 300 extensive national databases.

The curriculum is supported by facilities such as the Science Center, which is equipped with seventy-seven laboratories featuring state-of-the-art equipment.

There are studios on campus for sculpture and ceramics, and there is a foundry for bronze casting. In addition, there are a theater for the performing arts and music and an art gallery.

The Computing Center operates three main computers: a Prime 9955, a Prime 6350, and a Prime 850. In addition, the center has acquired for instructional purposes 150 microcomputers consisting of Texas Instruments Professional Computers, IBM PCs, Apple IIe's, Apple IIGS's, Apple Macintosh computers, and IBM PC/AT-compatible computers.

The University gymnasium building houses a swimming pool; racquetball, squash, and handball courts; exercise rooms; and a dance studio. Other physical education facilities include tennis courts, a large indoor running track, and separate fields for baseball, lacrosse, softball, and soccer.

Costs

In 1989-90, the annual tuition cost for full-time undergraduates was \$7950. Additional charges included fees of \$650 and room and board costs of \$4550.

Financial Aid

The Office of Financial Aid administers several federal and New York State programs that provide funds to assist students in pursuing their academic goals. Adelphi is proud of the considerable number of scholarships awarded for academic excellence.

Faculty

At Adelphi a warm relationship has always existed between the 820 full- and part-time faculty members and the students. The student-faculty ratio of 16:1 is reflected in the small size of classes.

Student Government

Students are represented on every governing committee of the University. The due-process system of governance is used to oversee student activities. All full-time undergraduates are eligible for office, and all may vote. Off-campus students also run for office.

Admission Requirements

Recommended admission qualifications include graduation from a four-year public or private high school or equivalent credentials, 4 years of English, 3 years of science (2 of them in laboratory sciences), 3 years of mathematics, 2-3 years of a foreign language or languages, and 4 additional units chosen from the fields mentioned or from history and social studies. Class rank and official test results from the SAT or ACT are required.

Personal interviews and campus tours are strongly recommended for all applicants. Arrangements can be made by contacting the Office of Admissions.

Application and Information

The following admissions credentials should be submitted by applicants: a completed application for admission, a nonrefundable fee of \$25, an official high school transcript or graduate equivalency diploma, official results of the SAT or ACT, and a personal essay. Transfer students must submit official transcripts from all colleges previously attended.

Applications are accepted and reviewed on a rolling basis. Candidates who wish to be considered for financial aid and housing, however, should apply by March 1 for the fall semester and November 30 for the spring.

For more information, students should call or write to:

Dean of University Admissions
Adelphi University
P.O. Box 501
Garden City, New York 11530
Telephone: 516-663-1100



ADRIAN COLLEGE

Adrian, Michigan

The College

Adrian College, chartered in 1859, is a career-sensitive liberal arts college that is affiliated with the United Methodist Church. The College strives to maintain teaching excellence and a personal approach to education, taking the individual student into account at each step in the educational process. Adrian College is a place from which to view the spectrum of career alternatives and personal life-styles and to set goals, develop skills, and build a competitive edge for success in work and in life.

Most of the 1,200 full-time and part-time students enrolled at the College are Michigan and Ohio residents, although eighteen states and eight foreign countries are represented. Nearly 10 percent of the student body are not of traditional college age. Most full-time students live in campus residence halls or fraternity/sorority houses; part-time students are encouraged to participate fully in the life of the College. Students develop leadership skills in over sixty-five academic, religious, cultural, and social organizations, including nine Greek social organizations, eighteen varsity sports, and over twenty intramural athletic teams.

Location

Adrian College is located in Adrian, Michigan, a city of 22,000 residents in the southeastern part of the state. The city of Adrian is the site of the historic Crowell Opera House and many other significant architectural treasures from the nineteenth century. Within a few minutes' drive of the campus are Hayes State Park, the Irish Hills scenic recreation area, and several lakes with public swimming, boating, and fishing facilities. Within an hour's drive are the cultural, educational, shopping, and entertainment centers of Ann Arbor, Detroit, and Toledo.

Majors and Degrees

Adrian College grants the following degrees: Associate of Arts, Bachelor of Sciences, Bachelor of Arts, Bachelor of Fine Arts, Bachelor of Music, Bachelor of Music Education, and Bachelor of Business Administration. Academic majors are offered in accountancy; anthropology; art; biology; business administration (with emphasis in marketing or management); chemistry; communication arts and sciences (with emphasis in argumentation and advocacy, broadcasting, or theater); computer science; criminal justice; earth science; economics; English (with emphasis in journalism, literature, or writing); family life management; fashion merchandising; French; German; health, physical education, and recreation; history; human services; interior design; international business; international studies; mathematics; music; philosophy; philosophy/reigion; physics; political science; psychology; religion; sociology; Spanish; and teacher education. There is also an individually designed major offered, and some students choose to complete two or more majors. Professional certification is available in elementary education, secondary education, and medical technology. Students whose academic and career goals are better served by an interdepartmental program of study may choose to complete an individually designed major. Preprofessional programs are offered in law, seminary, and health science (dentistry, medicine, optometry, and podiatry), in addition to a 3-2 pre-engineering program.

Academic Program

The College has established distribution requirements that are designed to emphasize liberal education through broad understanding. These requirements have been established in several liberal arts areas (arts, humanities, social sciences, natural and physical sciences, and cross-cultural perspective) and in basic education proficiency skills areas (communication, linguistics, and physical development). All students are required to complete at least one course in religion or philosophy and at least one 4-hour laboratory science course. A major is declared during the sophomore year. To complete a baccalaureate degree program, students must successfully complete a minimum of 124 semester hours, with at least 30 at the advanced level. As many as 60 semester hours may be earned through nontraditional credit programs, including CLEP, PEP, Advanced Placement, and others. Qualified students who seek additional challenge may enroll in the honors program, successful completion of which is noted on the transcript and diploma. Adrian College students who so desire may be accepted for cross-enrollment into the Army ROTC program at the University of Michigan.

Adrian College observes a two-semester calendar, and the first semester is completed before the Christmas break. A May term and summer session are offered for students who wish to intensify or accelerate their studies.

Off-Campus Arrangements

Through Adrian's cooperative arrangements, students may pursue studies at the Fashion Institute of Technology in New York or the American College in London. Formal affiliations have been established for study in England, France, Germany and Austria, Hong Kong, Japan, Mexico, the Netherlands, Spain, and Wales. Study-abroad opportunities are also available in other foreign countries through the departments of foreign languages, history, business administration, or political science. The College also offers opportunities for domestic study/living experiences, such as the Appalachian Semester, the Philadelphia Urban Semester, American University's Washington Semester, and programs offered by the Urban Life Center in Chicago and the Washington Center. Students earn academic credit for their participation in these approved off-campus and cooperative programs.

Career internships, available in all academic disciplines, enable students to test career interests and develop job-related skills. Students work for domestic or international employers, earning up to 12 semester hours of credit.

Academic Facilities

Shipman Library contains 135,700 volumes, 39,580 microforms, and 2,647 units of audiovisual material. The library subscribes to over 800 periodicals. A reciprocal borrowing agreement with nearby Siena Heights College provides access to an additional 80,000 volumes. A fund-raising campaign currently under way will provide the money needed for library expansion.

Computer terminals and printers, available free of charge to Adrian College students, are located in Jones Hall, Mahan Hall, North Hall, Peele Hall, and Shipman Library. The library also contains a microcomputer laboratory that has twelve IBM and IBM-compatible personal computers, printers, and a library of software, also available for student use at no charge.

The College provides laboratories for general chemistry and biology, chemical and biochemical instrumentation, and labs for psychology, language study, physics, acoustical studies, and tissue culture. Art studios, music practice rooms, greenhouses, and a planetarium also are available.

Downs Hall houses the Stubnitz Gallery of Art and Downs Hall Theatre, with its intimate thrust stage. Most student theater productions are staged in Downs Hall. Dawson Auditorium, which has a traditional proscenium stage, is used for College musical productions, Adrian Symphony concerts, and the programs of the College's Celebrity Series, Audubon Wildlife Film Series, and World Travel Film Series.

Costs

Tuition for 1990-91 is \$8840; campus room and board cost \$2700. The required activity fee is \$50, and the average cost of books and supplies is \$400 per year. There are no additional costs for laboratory or computer use.

Financial Aid

Adrian College is committed to making a private liberal arts education affordable and provides financial assistance to about 85 percent of its student body through a comprehensive financial aid program that consists of scholarships, grants, loans, and employment. The College participates in all appropriate Michigan aid programs, as well as the federal College Work-Study, Pell Grant, and Supplemental Educational Opportunity Grant (SEOG) programs. The Perkins Loan, Stafford Loan, TEFEL Supplemental Loan, and Parent Loan (PLUS) programs are also available. In addition, the College has established the Adrian College Loan program for students who do not qualify for Stafford Loans and the Teacher Loan Pay Back program for excellent students who want a career in teaching. There are a limited number of part-time positions on campus for those who wish to work. No-need scholarship assistance is available for students who have demonstrated high academic ability.

In order to be considered for any financial assistance, a student must complete the Adrian College Application for Admission and Financial Aid. To be considered for need-based assistance, students and parents must also complete the Financial Aid Form (FAF) of the College Scholarship Service (preferred) or the Family Financial Statement (FFS) of the American College Testing Program.

Faculty

Great teaching is at the heart of academic quality, and the faculty at Adrian College is a teaching faculty dedicated to providing exceptional challenge and opportunity for the College's diverse student body. The College employs 78 full-time and 56 part-time faculty members, approximately 60 percent of whom hold the doctorate or highest degree in their field. No classes are taught by graduate students. The student-faculty ratio is 15:1, and the average class size is 24.

Student Government

The Adrian College student government is charged with representing student views on matters of institutional policy and operation at all levels of College organization. Student representatives serve on all major campus committees of the College governance system, in addition to the Board of Trustees, the College Assembly, and the Judicial Board. The Student Activities Committee (SAC) is responsible for administering a significant portion of the student activity fee paid by all students; SAC sponsors programs to reflect the cultural, educational, recreational, and social interests that characterize the campus community.

Admission Requirements

Adrian College seeks to enroll qualified students regardless of sex, race, color, creed, physical disability, or national or ethnic origin. Applicants to Adrian College should present at least 15 units of secondary school preparation, including 4 units of English and 2 of mathematics (algebra and geometry), with the remaining units in social sciences, laboratory sciences, and foreign languages. (A unit is two semesters' work.) Most Adrian College students have maintained at least a B average in college-preparatory courses taken during the four years of high school. Outstanding students may qualify for the College's early decision program.

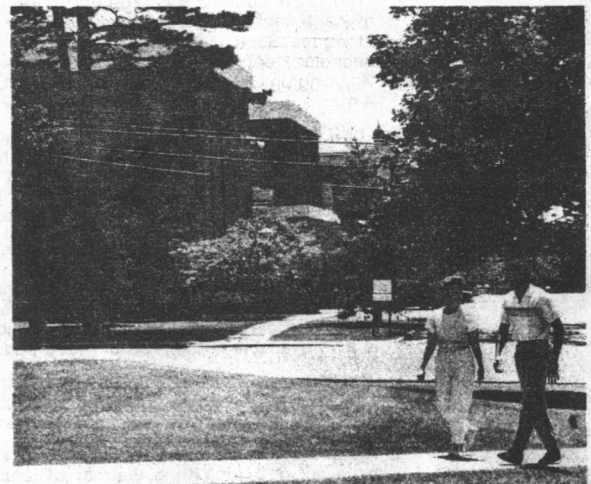
Students applying for freshman admission must also perform satisfactorily on either the American College Testing Program exam (ACT) or the Scholastic Aptitude Test (SAT). Transfers must have a cumulative grade point average of 2.0 (C) or better. Nontraditional students may be admitted based upon their submission of proof of high school graduation or a GED equivalency certificate, completion of the Nelson-Denny Reading Test, preparation of an acceptable essay, and completion of an interview with the Coordinator for Nontraditional Students.

Application and Information

Application can be made anytime following the completion of the junior year of high school. Students are usually notified of the admission decision within two weeks after the application file is complete, but not before September 1.

For further information, students should write to or telephone:

Office of Admissions
Adrian College
110 South Madison Street
Adrian, Michigan 49221
Telephone: 517-265-5161 (call collect)



Adrian College's modern campus occupies just over 100 acres.



AGNES SCOTT COLLEGE

Decatur, Georgia

The College

Agnes Scott College is a private, four-year liberal arts college founded in 1889 by Presbyterians in Decatur, Georgia. The institution was named for the mother of Colonel George Washington Scott, a prominent Presbyterian industrialist and developer whose gift of land, the first College building, furnishings, and equipment was the largest gift to the cause of education ever made in Georgia up to that time.

In 1907 Agnes Scott became the first accredited college or university in Georgia. The College's chapter of Phi Beta Kappa, chartered in 1926, is the second oldest in the state.

Agnes Scott College's tradition of academic excellence continues today, with a student body academically representative of the top women students in the nation. Students come from twenty-five states and fifteen countries, and 80 percent live on campus. The foundation of Agnes Scott College life is the honor system, centered on mutual trust, personal integrity, and social responsibility. The President's Committee on Cultural Diversity, whose members include students, faculty, and staff, promotes a greater appreciation for and understanding of pluralism in today's society.

Students may pursue special interests in clubs for creative writing, dance, music, theater, international cultures, politics, black awareness, foreign languages, and sports. Other campus organizations include honor societies for excellence in scholarship and leadership, the yearbook staff, and the student newspaper, *The Profile*. Social Council plans dances, mixers, and parties with neighboring colleges. Traditional annual highlights are Black Cat (the official culmination of first-year student orientation), Senior Investiture, Sophomore Parents' Weekend, Winter Social, Junior Jaunt, and Spring Dance. Throughout the year, the College sponsors events ranging from lectures by Nobel Prize winners to concerts by world-famous artists. Each spring, the College's Writers Festival brings well-known authors and poets to the campus for lectures and informal meetings with students.

Through the Career Planning and Placement Office, students are offered more than 200 internships and externships and attend on-campus career workshops as part of a four-year program that includes individual advising, interest assessment, and such additional resources as an alumnae advisory network and the computerized Georgia Career Information System.

Location

The beautiful 100-acre wooded, newly renovated Centennial campus is located within walking distance of downtown Decatur, a small city within Metropolitan Atlanta. Downtown Atlanta, 6 miles away, is easily accessible to Agnes Scott students from the rapid-transit rail station only two blocks from the campus. An international city, Atlanta offers numerous opportunities for personal contact with a variety of cultures and for study, through volunteer work and internships, in hundreds of art, business, educational, and political organizations. The city also offers extensive entertainment and cultural events and facilities, ranging from rock concerts to performances by the Atlanta Symphony Orchestra, from local theatrical offerings to touring Broadway shows, from neighborhood pubs to Atlanta cabarets, and from recreational parks to games in three major-league sports. The Agnes Scott campus is only 2 hours by car from the mountains of north Georgia, Tennessee, and the Carolinas and 5 hours from the beaches of Georgia's Golden Isles.

Majors and Degrees

Agnes Scott College confers the Bachelor of Arts degree. Majors are offered in art, Bible and religion, biology, chemistry, classical languages and literatures, classical studies, economics, English, English-creative writing, French, German, Greek, history, Latin, mathematics, music, philosophy, physics, physics-astronomy, political science, psychology, sociology, sociology-anthropology, Spanish, and theater. Interdisciplinary majors are offered in art history-English literature, art history-history, biology-psychology, fine arts, history-English literature, international relations, Latin American studies, mathematics-economics, and mathematics-physics. Through a dual-degree program, offered in industrial management, information and computer science, management science, and twelve engineering fields, a student may combine three years of liberal arts studies at Agnes Scott with two years of specialized work at the Georgia Institute of Technology, receiving a bachelor's degree from each institution. Also available is a 3-4 Master of Architecture program offered with Washington University in St. Louis, Missouri, resulting in a bachelor's degree from Agnes Scott College and a master's degree from Washington University.

Academic Program

The College operates under an academic calendar of two semesters. The curriculum is designed to help students gain basic knowledge in the humanities, natural sciences and mathematics, and social and behavioral sciences and achieve particular competence in one or two disciplines. Single, double, and individually designed majors give students flexibility in planning their area of academic concentration. A student is required to complete 124 semester credit hours prior to graduation.

The Preparatory Program for Business is designed to facilitate a student's entry into the business world. Additional curricular options are available for students desiring independent research in their major discipline, off-campus experience in local or national government, study abroad, preprofessional training in law or medicine, or professional training in teacher education. The state-approved teacher education program leads to the Georgia professional certificate, which is recognized and accepted by most states. Teacher certification is also available in the area of music education.

The Return to College Program offers women beyond the traditional college age the opportunity to attend the College for a degree or for personal enrichment on a schedule that meets their individual needs. Return to College students attend classes with traditional students but have the option to attend part-time or full-time.

Off-Campus Arrangements

Agnes Scott conducts its own program of study abroad through the Global Awareness Program. Recent trips have included Hong Kong, Germany, France, Mexico, Greece, and Great Britain. In addition, qualified students may spend either a semester or the junior year participating in other programs abroad approved by the College. An exchange program with Mills College in Oakland, California, enables interested students to study for a quarter, semester, or year in the San Francisco Bay Area. Agnes Scott and Johannes Gutenberg Universität Mainz at Garmersheim have entered into an exchange program whereby students from one college may spend a semester or a year at the other. The University Center in Georgia, through which fourteen Atlanta-area colleges and universities cooperate, shares courses of instruction, library services, visiting

scholars, faculty research, and departmental conferences. Air Force and Naval ROTC are available through a crosstown arrangement with the Georgia Institute of Technology.

During alternating years, the Department of Biology offers summer-study field trips in marine biology in Florida. Selected students may intern in the Georgia legislature or local county government, or they may design their own internship program. The Washington Semester program, coordinated by American University, enables students to study for a semester in Washington, D.C., to observe the federal government in operation or to study national economic policymaking, science and technology, or international development.

Academic Facilities

McCain Library contains 185,000 volumes and over 26,000 items of audiovisual materials and receives 790 periodicals. The comfortable, spacious building includes a student lounge, open fireplaces, study carrels on each floor, seven floors of open stacks, a music-listening facility with over 6,000 records, a special-collections room, archives, and a boardroom. The library holds several noteworthy collections of rare books and manuscripts, including one of the leading Robert Frost collections. Agnes Scott's reciprocal library service gives students direct access to thirty additional libraries in the Atlanta-Athens area.

Personal computers are available to students in the library's Academic Computing Center, departmental offices, and residence halls in a 7:1 student-to-computer ratio.

The Dana Fine Arts Building houses the Departments of Theatre and Art; its facilities include a thrust-stage theater, two floors of balcony art studios, pottery and sculpture studios with kilns, a darkroom, and one of the most advanced printmaking laboratories in the Southeast. The building, designed by renowned architect John Portman, also houses the Dalton Galleries, traveling exhibits and student-faculty exhibits, and the College's permanent collections. Presser Hall contains facilities for the teaching of music, including soundproof recording studios and practice rooms for singers and instrumentalists. Gaines Chapel's auditorium houses a 3,000-pipe Austin organ and a large stage for performances by student and professional dancers, musicians, and theatrical companies. The smaller Maclean Auditorium, which houses a Schlicker organ, is used for chamber music concerts and student recitals. The Campbell Science Building has computer facilities and laboratories for experimentation and research in biology, chemistry, physics, and psychology. The Woodruff Physical Activities Building, completed in 1988, features an eight-lane waveless swimming pool, a weight room with Nautilus equipment, a gymnasium with a regulation basketball court, locker-room facilities for men and women, classrooms, and faculty offices. The College's 30-inch reflecting telescope, one of the largest in the Southeast, is housed in an excellent dark-sky observing site; students have the opportunity to do real research in astronomy.

Costs

Tuition for 1990-91 is \$10,450. Residence costs, including room, board, and infirmary service, come to \$4180. The student activity fee is \$125. Personal expenses, including books and supplies, are estimated at \$850.

Financial Aid

No qualified student with financial need should hesitate to apply to Agnes Scott. The College meets 100 percent of demonstrated need as indicated by the Financial Aid Form of the College Scholarship Service. This assistance is provided through grants-in-aid, loans, and campus employment. Approximately 51 percent of the College's students receive institutional need-based financial assistance. Agnes Scott also offers renewable merit-based Honor Awards to outstanding first-year students. Renewable music scholarships are awarded to new students intending to major in music.

Faculty

Agnes Scott's faculty of 70 men and women (90 percent of whom hold the earned doctorate) is enriched by visiting faculty members from other institutions in the United States and abroad. A student-faculty ratio of 8:1 permits small classes and individual attention, and senior faculty members teach first-year students as well as upperclass students. Every student is assigned a faculty adviser to assist in course selection and academic counseling.

Student Government

Agnes Scott is a self-governing community, and each student is a member of the Student Government Association. A strong honor system places responsibility for integrity and good judgment in self-government on the individual student. The honor system allows examinations to be self-scheduled and unproctored. Regulations governing student life are made by the students with the approval of the Administrative Committee, on which the Student Government Association, Honor Court, and Interdormitory Council presidents serve as voting members. Policies are formulated with the goal of maintaining maximum freedom for the individual within the framework of community responsibility.

Admission Requirements

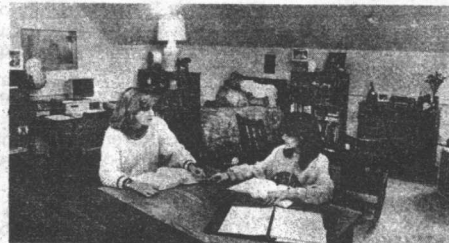
The College admits, without regard to race, color, creed, national or ethnic origin, or physical handicap, students whose academic and personal qualities give promise of success. Transfer and international students are welcome. Admissions decisions are made by a faculty committee that reviews each applicant's school record, SAT or ACT scores, recommendations, and the personal information she has provided. Interviews are recommended but not required. Arrangements for an interview at the College, a campus tour with a student guide, and visits to classes may be made through the Office of Admissions. Wherever admissions representatives visit high schools, interested students in the area are notified and encouraged to meet with the representatives. In many cities, alumnae admissions representatives are available to discuss the College with prospective students who are unable to visit the campus. Names and addresses of local representatives are supplied by the Office of Admissions upon request.

Application and Information

An application for admission and supporting credentials should be filed with the Office of Admissions by the following dates: November 15 for early decision, with notification by December 15; January 15 for scholarship candidates, with notification by February 1; March 1 for regular decision, with notification beginning March 1; and December 1 for the spring semester, with notification by January 1.

Director of Admissions
Agnes Scott College
Decatur, Georgia 30030
Telephone: 404-371-6285
800-822-4999 (toll-free in Georgia)
800-235-6602 (toll-free outside Georgia)

Recently renovated residence halls feature large rooms furnished with reproductions of antique oak furniture.





ALABAMA STATE UNIVERSITY

Montgomery, Alabama

The University

After beginning as a private school organized in 1866 for the education of blacks, Alabama State University was established as a public institution in 1874 as the State Normal School and University for Colored Students and Teachers. The school was moved from Marion to Montgomery, Alabama, and the name was changed in 1887 to the Alabama Colored Peoples University, in 1889 to the State Normal School for Negroes, in 1954 to Alabama State College, and in 1969 to Alabama State University. The most important reasons students give for choosing Alabama State University are the excellent academic programs, the friendly campus atmosphere, and the people—the students, faculty, administrators, and staff members. The 3,600 students (94 percent undergraduate) come from Alabama and twenty-four other states as well as from six foreign countries. The faculty and staff members have diverse racial and ethnic backgrounds, thus exposing all students to an international environment on campus. There are seven residence halls, a married students' apartment complex, and an honors dormitory. Students who do not wish to live on campus may select approved off-campus housing.

Student life at Alabama State University supplements formal instruction. Activities and organizations include student government, a student newspaper, the yearbook, dramatics, forensics, voluntary religious programs, musical recitals and concerts, and art activities. There are four chapters of national fraternities and four of national sororities as well as chapters of nationally chartered professional societies and honor societies. Numerous social and interest clubs are also active on campus. The University is a member of the Southwestern Athletic Conference and the National Collegiate Athletic Association and fields varsity teams in football, baseball, basketball, track, volleyball, tennis, and golf.

Alabama State University and its programs are accredited by the Southern Association of Colleges and Schools, the National Council for Accreditation of Teacher Education, the National Association of Schools of Music, the National Association of State Directors of Teacher Education and Certification, and the Alabama State Department of Education. The University also holds memberships in a large number of professional organizations.

Location

The University has an urban campus in Montgomery, the capital of Alabama, close to the downtown business and financial district. Interstate 85 adjoins the campus, and the interstate 85-85 interchange is only a mile away. Bus service is excellent. The city has numerous shopping areas and good restaurants. Churches of various denominations are also within walking distance of the University. Alabama State University students have the opportunity to become involved in such community activities as church choirs, community centers, social service agencies, educational agencies, and various other community-based programs. Students can also participate in a series of seminars designed to enhance their understanding and enjoyment of the productions presented during the Alabama Shakespeare Festival season.

Majors and Degrees

Alabama State University grants the Bachelor of Arts and Bachelor of Science degrees in biology, computer science, English, French, history, mathematics, political science, radio-television-film, and sociology. The Bachelor of Arts degree only is offered in art, art education, journalism, marine biology, music, Spanish, speech communication, and theater. The Bachelor of Science degree only is offered in accounting, business education, chemistry, computer information systems, criminal justice, early childhood education, economics, elementary education, finance, human services, laboratory technology, management, marketing, office administration, physical education, physics, psychology, recreation, secondary education, social work, special education, and traffic education. The Bachelor of Music Education is also offered. A two-year program leading to the Associate of Science is offered in business administration, child development, community services, general studies, human services, office administration, recreation leadership, secretarial education, and secretarial studies.

Alabama State University, in cooperation with other four-year institutions, offers dual-degree programs in engineering and allied health.

Academic Program

The curriculum for four-year-degree students has a common core of 32 semester hours. Each student who has completed fewer than 32 credit hours is enrolled in the University College and remains there until he or she is accepted into one of the degree-granting divisions: the Colleges of Arts and Sciences, Business Administration, and Education and the Schools of Music and Graduate Studies and Continuing Education. The Division of Aerospace Studies offers a two-year as well as a four-year program of study.

The minimum credit-hour load for a full-time undergraduate student working toward a bachelor's degree is 12 hours per semester. A normal load for a full-time undergraduate student in good standing is 15-18 semester hours. With approval, upperclass students with a cumulative grade point average of at least 3.0 (B) or seniors with a cumulative average of 2.0 or more may carry an additional 2 hours per semester but may not carry more than 20 hours per semester. The two-year Associate Studies Program operates on a 26-semester-hour core curriculum.

Air Force and Army ROTC programs are available.

Alabama State University operates on a semester calendar and has an eight-week summer session. The fall semester begins in August and ends in December and the spring semester begins in January and ends in May. The eight-week summer session begins in June and ends in August.

Off-Campus Arrangements

Alabama State University offers a limited amount of off-campus instruction at sites in Birmingham, Mobile, Uniontown, and Selma, Alabama. The cooperative education program provides students with opportunities for internships in business, industry, and government agencies either locally or in other cities and states. Student teachers pursue internships in school systems throughout the state of Alabama. The College of Business Administration provides student case workers for projects sponsored by the Small Business Administration.

Academic Facilities

The Levi Watkins Learning Center houses an ultramodern library complex and facilities for the study of business administration. Together, the library and learning resources center house more than 350,000 volumes and seat approximately 600 people. The five-floor library is air conditioned and incorporates all library and media resources and related services under one roof. The center also houses archives and special

collections, including the Afro-American Collections, which contain invaluable memorabilia. The Media Center has instructional media systems, including a closed-circuit television studio/laboratory, a multimedia lecture hall, an individualized-instruction laboratory, and other modern facilities.

The new Tullibody Fine Arts Complex contains studios for painting, sculpture, ceramics, design, and printmaking. It also houses the Lelia M. Barlow Theatre.

The Tullibody Music Hall houses the College of Arts and Sciences and features a 202-seat recital hall with nonparallel walls for high acoustical standards. Also within Tullibody are recording booths, a two-story band rehearsal area, a choir rehearsal area, and a pipe organ with 439 pipes. The music library/listening center features a dial-phone retrieval system for music appreciation classes. The electronic-piano center has twelve Baldwin 88-key electronic keyboards and a teacher console.

The Thomas E. Kilby Hall houses the Office of Enrollment Management, the Placement Services and Cooperative Education Office, and the radio station (WVAS, 90.7 FM).

Costs

Tuition, fees, and room and board for 1990-91 are moderate compared to other four-year institutions in the area. Tuition for undergraduate instruction is approximately \$1100 for Alabama residents and approximately \$2200 for nonresidents. The cost of room and board in the residence halls is about \$1000. The total costs for one year, including special fees and books, average \$3100 for Alabama residents and \$4200 for students from out of state. Costs are subject to change for 1991-92.

Financial Aid

The Student Financial Aid Office administers financial assistance. Approximately 80 percent of the University's students receive aid. Specific financial aid services are offered through activity awards, Pell and Supplemental Educational Opportunity grants, College Work-Study Program awards, assistantships, the Perkins Loan Program, federal guaranteed loans, LEEP (Law Enforcement Education Program) funds, and the Alabama Student Assistance Program. Numerous scholarships are also available for high school and junior college graduates with financial need who have demonstrated high academic achievement and personal ambition. For additional information, students should contact the director of student financial aid at the University.

Faculty

The faculty consists of 257 full- and part-time members who hold graduate degrees from institutions in all parts of the United States and in several foreign countries. Of the faculty, 95 percent hold degrees at the master's level and above; 44 percent hold earned doctorates in their field. All graduate faculty members hold the terminal degree in their field. Ninety-eight percent of the faculty have teaching responsibilities. Graduate assistants tutor in some undergraduate courses.

A limited amount of research is done at the University. Faculty members and students are encouraged to work together on most projects. The student-faculty ratio is approximately 20:1.

Student Government

The Student Government Association at Alabama State University is the official representative organization for the entire student body. Through this organization, students are free to express views on issues of University policy and on all matters of concern to the student body. Students have the opportunity for representation and a voice on standing committees directly concerned with academic and nonacademic matters and student affairs. The University is committed to the principle of institutional self-governance and recognizes the Student Government Association as the official agency of the student body. Citizenship regulations are based upon the premise that, within the University, it is possible for men and women of good faith to engage in free expression and that self-government should operate effectively. The University's disciplinary codes and proceedings are designed not only to be reliable and fair but also to be effective. It is assumed that each member of the campus community is committed to the principle of institutional self-governance and will display a willingness to participate in the necessary proceedings and respect the finality of the results.

Admission Requirements

Admission is open to high school graduates with acceptable scores on the American College Testing Program examination (ACT) or the Scholastic Aptitude Test (SAT). Admission is also open to adults who pass the General Educational Development test (GED) and obtain a high school equivalency certificate. Transfer students should have an academic average of C or better and be eligible for readmission into the school they last attended. Graduates of state junior colleges may receive full credit for having met the two-year, lower-division requirements for a bachelor's degree. Students may enter at the beginning of any term. The open admissions policy at the University gives all eligible students an equal opportunity to attend regardless of race, color, or national origin. Campus interviews for prospective students are not required, but applicants are expected to submit the necessary application materials before the date of registration for a particular semester. Students who want scholarships or grants-in-aid should contact the University's Financial Aid Office.

Application and Information

Applicants must submit an application form, transcripts of all academic work completed, a medical examination report or health history questionnaire, ACT or SAT scores, and a residence hall reservation form with an \$85 reservation deposit if dormitory space is desired. There are no charges or fees required to submit an application for admission to the University.

For inquiries or an application package, students should write to or call:

Office of Enrollment Management
Alabama State University
P.O. Box 271
Montgomery, Alabama 36101
Telephone: 205-293-4291
800-354-8865 (toll-free in Alabama)

ALASKA PACIFIC UNIVERSITY

Anchorage, Alaska

The University

Alaska Pacific University was founded in 1959, the same year Alaska became a state. It is the only fully accredited private university in Alaska. It offers undergraduate and graduate degree programs. The school is ecumenical and nonsectarian, yet values its United Methodist roots and its association with Methodism's seven major universities: American, Boston, Denver, Duke, Emory, Southern Methodist, and Syracuse.

Students come to APU from twenty-one states and twenty-three countries. The school is proud of its international and intercultural student body. There are 401 women and 238 men currently enrolled in undergraduate programs at APU. Small classes; lively interaction among the students, faculty, and staff; and personal academic advising are special benefits of an APU education.

Extracurricular activities range from intramural club sports, such as ice-skating, skiing, basketball, soccer, football, and broomball, to participation in the various student government-sponsored activities, the student newspaper, and the Model United Nations activities, to name only a few. Other clubs and organizations include the International Student Organization, Native Student Club, Accounting Club, and drama and performing arts groups. A wide variety of Outdoor Program activities for individuals and groups occurs throughout the year. Students are encouraged to organize and initiate activities. All clubs, organizations, and activities are supported, sponsored, or funded through the Office of the Dean of Students.

Alaska Pacific has intercollegiate teams in wrestling, men's and women's basketball, and women's volleyball. APU is an NAIA institution, and athletic grants are awarded.

Location

Alaska Pacific University is located in suburban Anchorage, at the base of the Chugach mountain range. Surrounded on three sides by mountains and by Cook Inlet on the fourth, Anchorage is the outdoor enthusiast's dream. In summer, opportunities for fishing, hiking, and camping abound. Winter sporting activities include downhill and cross-country skiing, ice-skating, broomball, and snowshoe softball. Two major ski resorts are within an hour's drive of the campus, offering some of the most challenging, exciting, and varied skiing conditions available anywhere. Arctic Valley, the local day-use ski area, provides both downhill and cross-country enthusiasts with well-groomed trail skiing, while on the mountain face free-style skiers can practice on one of the slopes designed and reserved specifically for their brand of skiing. Forty minutes away from Anchorage, internationally famous Mount Alyeska also offers visitors challenging and diverse skiing conditions. Alyeska is the home of many of the state's heli-skiing services, offering the experienced skier the opportunity to experience a run on snow fields never before skied by any human being. In February of each year, the World Championship Dog Sled Races highlight the two-week-long winter festival, the Fur Rendezvous, and the internationally acclaimed Iditarod dogsled run to Nome begins in Anchorage. Cultural facilities in the community include the Fine Historical Arts Museum, the Anchorage Symphony Orchestra, the Visual Arts Center, numerous galleries with daily showings and activities, and the nationally renowned Alaska Repertory Theatre.

Majors and Degrees

Alaska Pacific University does not have traditional majors, although students may take courses from the traditional disciplines. The emphasis is on concentrations that enable students to integrate their learning and see the connection between different areas of knowledge.

Alaska Pacific University offers the Associate of Arts and the Bachelor of Arts degrees with areas of interest in accounting/finance, comparative literature and languages, earth and environmental sciences, elementary education, fine and performing arts, intercultural communication, international business, labor relations, management/marketing, natural resources, Pacific Rim studies, philosophy and religion, physical and outdoor education, pre-college teaching, precounseling, pre-engineering, prelaw, premedicine, preministry, pre-social and government service, social science, and travel and hospitality management. It offers programs in travel industry, hotel/food service management, and labor relations through either a certificate program, a two-year program leading to an associate degree, or a four-year program leading to a bachelor's degree. The University also offers a certification program in elementary education for teachers.

Academic Program

The interdisciplinary Core Curriculum features courses carefully designed to provide not only a broad foundation in the humanities, social sciences, and natural sciences, but also an understanding of how to draw upon the vast array of human knowledge and experience to deal with important issues. Students are also asked to take a set of college competency courses that enhance written and spoken English, improve mathematical ability, and develop the physical and outdoor education skills necessary for lifelong fitness.

Each student at APU selects a concentration within which to focus his or her studies, but not to the exclusion of other concentrations. The curriculum is divided into five concentrations: human resources and education; humanities, arts, and communication; management; natural sciences and mathematics; and social science, philosophy, and religion. Within each concentration, a student selects a track or cluster, which leads to the development of competence in a particular area and to career opportunities. Each student, usually in the senior year, takes a practicum or internship for credit to gain practical experience and develop contacts in his or her chosen field. In addition, Alaska Pacific University offers all students a variety of elective courses that complement and add variety to the Core Curriculum areas of concentration, along with the track or cluster. The English Language Institute offers a program in English as a second language, and the University offers a wide variety of international, interreligious, intercultural, and study skills programs.

Academic Facilities

Undergraduate students at Alaska Pacific University are served by the Anchorage Higher Education Consortium Library, which is operated through a cooperative agreement between Alaska Pacific University and the University of Alaska Anchorage. Centrally located, the library contains more than 500,000 bound documents, 91,000 government documents, and special collections of nonprint media, sheet music, and Alaska and Arctic materials. The library subscribes to over 3,900 periodicals and has both modern facilities and an excellent staff.

On-campus facilities include the Grant Hall Theatre; Academic Support Center; Library Resource Center; Computer Resources Center; chemistry, geology, and biology laboratories; and the Alaskan Library Collection of original maps, documents, journals, and publications on the discovery, exploration, and eventual statehood of Alaska.

Costs

Tuition for 1990-91 is \$6200 for both in-state and out-of-state students. Room and board charges are \$3870. The year's activity fees for full-time students total \$130, and books and miscellaneous supplies are estimated to cost \$500.

Financial Aid

The primary purpose of student aid is to provide financial resources to students who would otherwise be unable to pursue their educational goals. Every effort is made to meet the demonstrated need of all students to the extent that funding permits. Such assistance is available primarily on the basis of demonstrated need, except where funds are specifically allotted for recognition of special talents. While the primary responsibility for financing education rests with the student and his or her family, the University offers assistance to supplement their efforts. Aid in the form of grants, loans, work opportunities, and scholarships is available. Approximately 85 percent of all APU students are receiving some form of financial aid through the University. In order to be considered for assistance, students must submit the Financial Aid Form (FAF).

Faculty

Alaska Pacific University is proud of the quality and international composition of its faculty. Seventy percent of the full-time members hold a Ph.D. in their field, and many do additional work as consultants to various groups in the community. The University's faculty-student ratio of 1:12 allows frequent faculty-student interaction, resulting in education of the highest quality.

Student Government

The Associated Students of Alaska Pacific University is the main representative student organization on campus. As the student government, it initiates and sponsors student activities and other special programs that include the student newspaper, student orientation events, international student banquets, faculty and student sporting competitions, and a variety of other social and cultural activities.

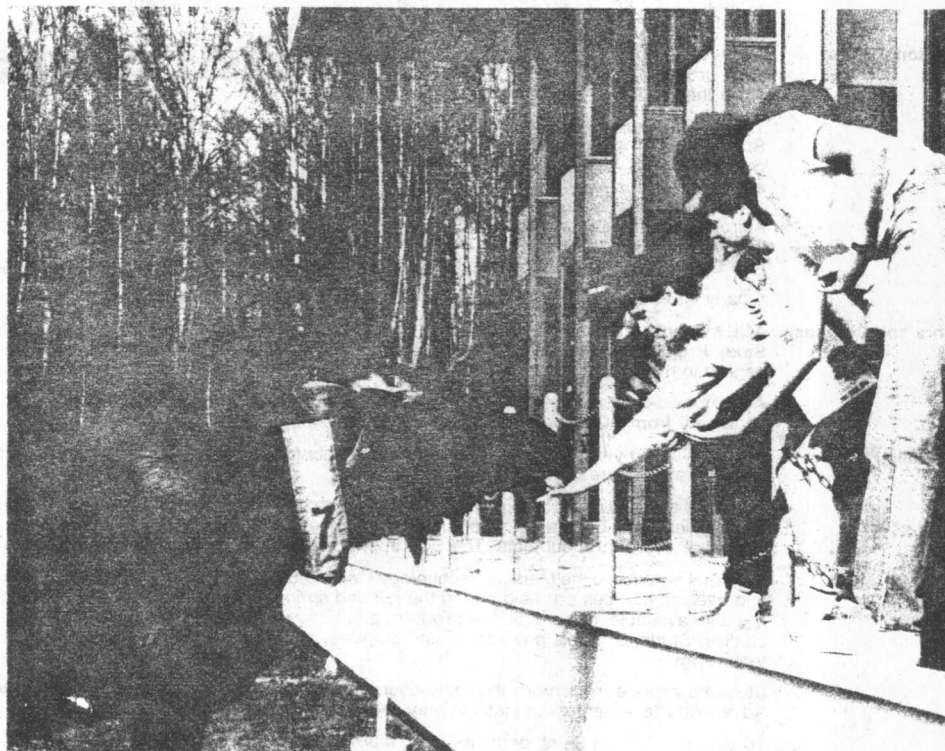
Admission Requirements

Students interested in becoming candidates for admission to the University must have a minimum grade point average of 2.5 (on a scale of 4.0) and a combined score of 800 on the SAT or a composite score of 17 on the ACT. To apply, a candidate for freshman admission must complete an application form and submit an official copy of his or her high school transcript. Transfer students must submit transcripts from all colleges or universities they have attended. International students, in addition to the requirements listed above, must submit their scores on the Test of English as a Foreign Language (TOEFL). Any student with a TOEFL score indicating university-level English may enroll in Alaska Pacific University's English Language Institute prior to acceptance into the regular academic program.

Application and Information

Admission decisions are determined on a rolling basis, with those applications received earlier in the year being considered first. The application deadline for the fall semester is August 15. All inquiries and application material should be directed to:

Director of Admission and Financial Aid
Alaska Pacific University
4101 University Drive
Anchorage, Alaska 99508
Telephone: 800-Alaska-U



APU students feed one of the many wild moose that roam the 200-acre wooded Alaska Pacific campus.



ALBANY COLLEGE OF PHARMACY OF UNION UNIVERSITY

Albany, New York

The College

When students choose the Albany College of Pharmacy, they choose a style, a philosophy, and a way of life, as well as an education that, if properly applied, will be a source of satisfaction, personal growth, and livelihood. ACP offers excellent academic preparation in the profession of pharmacy. Its small size and methods of personal instruction give students an opportunity to grow and discover their greatest potential. Throughout its history, the school's concern has always been to provide a professional challenge—in the classroom and in the laboratory—and a personal challenge, fostering independence, responsibility, and self-awareness.

Founded in 1881 as the Department of Pharmacy of Union University, the Albany College of Pharmacy was the vision of Archibald McClure, president of an Albany pharmaceutical firm. He conceived the plan of educating professional pharmacists in a formal academic environment. The plan emphasizes the necessity of a strong foundation in the basic sciences. Today, the pharmacy professional is an active participant in the health-care system; he or she spends a significant amount of time interacting with and counseling patients. ACP has been engaged in the education of the pharmacist for 108 years.

In addition to the Bachelor of Science in pharmacy (see below), ACP offers the Pharm.D. in pharmacy, a post-B.S., two-year program.

ACP's 630 students come from near and far, representing sixteen different states and ten foreign countries. The varying geographical and cultural backgrounds of the students help to create an interesting on-campus environment. As a group, ACP students are notably career oriented; on an individual basis, they are remarkably diverse in their interests and goals. At ACP, individual expression is both welcomed and encouraged.

The ACP Apartment Building offers a full range of facilities to all noncommuting freshmen. Each furnished one- or two-bedroom apartment has its own living room, kitchen, and bathroom. Housing for noncommuting upperclass students is available in homes and apartments in the surrounding areas.

The College encourages students to take full advantage of the wide range of intercollegiate teams, student-sponsored activities, clubs, community activities, services, professional organizations, and recreational events, believing that extracurricular activities contribute to a full college experience. Students at Albany College of Pharmacy are part of the Union University community and may participate in the activities sponsored by the Union University Students Association. Students from Union College, Albany Medical College, and Albany Law School together with students from the Albany College of Pharmacy enjoy dance, exercise, film, music, and other cultural and expressive events.

Location

The Albany area is an exciting place to live. The Capital District, comprising Albany, Schenectady, and Troy, is an urban area of approximately 800,000 people, including more than 50,000 college students attending more than a dozen public and private academic institutions.

The ACP campus is conveniently located in the state capital and close to the Nelson A. Rockefeller Empire State Plaza. The area offers numerous political, cultural, and entertainment activities, including summer concerts by the Albany Symphony Orchestra, performances by resident dance and theater companies, and exhibitions at the New York State Museum. The great Adirondack Forest Preserve is an hour's drive north of Albany. Students take advantage of special seasonal opportunities. Major ski areas in the Catskills, the Adirondacks, the Green Mountains, and the Berkshires are within an hour and a half of the College. During the summer, both the New York City Ballet and the Philadelphia Orchestra make the Saratoga Performing Arts Center their home; the Boston Symphony has its summer headquarters in Tanglewood.

Albany is 3 hours from New York and Boston and 4 hours from Montreal.

Majors and Degrees

ACP students may earn the Bachelor of Science in pharmacy. ACP also offers a Medical Technology Flexible Study Program. Introduced in 1984, the program is designed to provide an employed holder of an A.A.S. degree in medical technology with an opportunity to earn the Bachelor of Science in medical technology.

A combined-degree program with Union College enables students to obtain a Bachelor of Science in pharmacy from ACP and a Master of Science in health systems management.

Academic Program

ACP has a 108-year tradition of preparing students for careers in the health-care field. Graduates follow a wide variety of career paths.

Students are required to take a core program that emphasizes a three-year concentration in math and science, including courses in biology, chemistry, physics, and calculus, as well as required courses in English and other liberal arts subjects. The B.S. in pharmacy program is a five-year program.

Students enrolled in the Medical Technology Flexible Study Program attend classes part-time. Late afternoon and evening courses are held during the fall and spring semesters. Special concentrated summer sessions are also available. In general, the program emphasizes liberal arts, humanities, and selected basic science studies. Students in this program must complete 135 semester hours to receive a B.S. degree in medical technology.

Students choose from more than fifty courses offered at ACP. Students earning grades of 3 or better on Advanced Placement examinations may receive college credit.

To earn the B.S./M.S., students must take 36 graduate course credits. The program requires five years of study including summers. Graduates of the ACP/Union College health systems management curriculum are exceptionally well prepared to meet the demands of an increasingly complex health-care system. Their extensive pharmacy education is augmented by training in health statistics, computers, and the behavior and management of organizations and personnel. Applications for the program may be obtained from ACP.

New York State law requires that a pharmacist complete a six-month internship and pass a licensing examination before practicing in the state.