

NATIONAL TRUST GUIDE

MEETING PLANNER'S GUIDE TO HISTORIC PLACES



SUSAN REYBURN

NATIONAL TRUST FOR HISTORIC PRESERVATION

• • • • •

NATIONAL TRUST GUIDE MEETING PLANNER'S GUIDE TO HISTORIC PLACES

• • • • •

Susan Reyburn

JOHN WILEY & SONS, INC

New York • Chichester • Weinheim • Brisbane • Singapore • Toronto

The National Trust for Historic Preservation is the only private, nonprofit organization chartered by Congress to encourage public participation in the preservation of sites, buildings, and objects significant in American history and culture. Support is provided by membership dues, endowment funds, contributions, and grants from federal agencies under provisions of the National Historic Preservation Act of 1966. For information about membership in the National Trust, write to the Membership Office, 1785 Massachusetts Avenue, N.W., Washington, D.C. 20036. www.nationaltrust.org

This text is printed on acid-free paper.

Copyright © 1997 National Trust for Historic Preservation

Published by John Wiley & Sons, Inc.

Book design by Tenth Avenue Editions, Inc.
for John Wiley & Sons, Inc.

All rights reserved. Published simultaneously in Canada.

Reproduction or translation of any part of this work beyond that permitted by Section 107 or 108 of the 1976 United States Copyright Act without the permission of the copyright owner is unlawful. Requests for permission or further information should be addressed to the Permissions Department, John Wiley & Sons, Inc., 605 Third Avenue, New York, NY 10158-0012.

This publication is designed to provide accurate and authoritative information in regard to the subject matter covered. It is sold with the understanding that the publisher is not engaged in rendering legal, accounting, or other professional services. If legal advice or other expert assistance is required, the services of a competent professional person should be sought.

Library of Congress Cataloging in Publication Data:

Reyburn, Susan.

National Trust guide meeting planner's guide to historic places / Susan Reyburn.

p. cm.

Includes index.

ISBN 0-471-17891-8 (cloth: alk. paper)

1. Convention facilities--United States--Guidebooks. 2. Historic buildings--United States--Guidebooks. 3. Meetings--United States--Planning. I. National Trust for Historic Preservation in the United States. II. Title.

TX907.2.R49 1997

647.9473--dc21

97-7478

Printed in the United States of America.

10 9 8 7 6 5 4 3 2 1

INTRODUCTION

People have always needed places to gather for special occasions and business affairs, but in recent years there has been a significant increase in the number of corporate retreats, strategy sessions, workshops, and similar gatherings that are held off-site, with the expectation that a change of scenery will bring a freshness and vitality to the proceedings. More than ever, corporations, government agencies, associations, community and civic organizations, and other groups are looking for out-of-the-ordinary settings to conduct business activities that were once held in-house. Managers and planners have come to realize the value in gathering with employees and colleagues outside the office—even outside the city or state. Consequently, as more and more meetings occur off-site and groups look for interesting venues, meeting planners will have to increase their options and become more creative in their site selection. To assist planners and to further awareness of some of the notable treasures from America's past, the National Trust for Historic Preservation is pleased offer this first edition of the *Meeting Planner's Guide to Historic Places*.

IS THIS BOOK FOR YOU?

This is the first national guidebook to provide meeting planners, travel agents, party planners, and others with basic information on historic properties that are available for business meetings, social events, or both. Although this book is primarily aimed at professional meeting planners, caterers, party planners, and anyone interested in holding a group event—from a convention to a family reunion—at a historic property will find this guide valuable.

WHY GO TO A HISTORIC MEETING PLACE?

Groups looking for something unusual or special to add to their events will find that historic meeting places, with their old-fashioned charm, colorful stories, and links to the past can be the perfect gathering places. And while there may be a fax and a modem amid the antique furnishings, or modern conference facilities within an authentic colonial mansion, there is also a vivid acknowledgment of, and respect for, that which has shaped our cultural heritage. For many groups, meeting in a major city with its convenient transportation and cultural or recreational institutions at hand is sufficient, but add to that mix a historic setting and the event gains another valuable perspective. Likewise, meeting in a smaller historic town or out-of-the-way place can provide a welcome change of pace, as well as focus attention on some of the most inspiring celebrations of history the country has to offer. So whether you are looking for the ideal spot to conduct a memorable business meeting or to host a special reception, flip through these pages and let some of the mansions and mills, castles and cathedrals, ships and farms, hotels and opera houses from America's past offer you an invitation to meet with them.

SITES INCLUDED IN THIS GUIDE

The places listed in this guide were selected for their preservation of the past. More than 400 historic meeting places from across the country are included, from large resorts to small bed and breakfasts, from landmark hotels in busy downtown metropolitan centers to ranches and farms far removed from urban life. In many cases, well-known historical figures lived at or visited these places, and a number of the sites are associated with significant historic events. To be included, a property must be a least 50 years old and have maintained its architectural integrity and historical flavor. Many of the sites presented here have received specific designations testifying to their historical value, and many others are located in recognized historic districts, where they contribute to the area's valuable historical, architectural, and cultural settings. The entries are diverse in age as well, ranging from colonial taverns dating back to the seventeenth century to chic Art Deco hotels from the 1930s. What they have in common is their commitment to preserving—as much as possible in today's world—the architecture, the fashion, the furnishings, the atmosphere, the names, and the stories that make these places tangible connections to America's past.

ABOUT THIS GUIDE

Entries are listed alphabetically, by state and then by city. For each historic meeting place, there is a site description and table of information based on material provided to the National Trust by that site. The descriptive section highlights the history and *architectural features of the site and generally provides information on the types of meeting space available or the functions that can be accommodated*. There is also an overview of the types of guest rooms, dining options, and recreational facilities that are available, as well as nearby attractions. If your event or meeting requirements are unusual, however, do not hesitate to call a site that interests you—many places will be happy to make additional arrangements that will help to make your function a success, even if the site does not appear to be a perfect match at first glance. If a property has a particular historic designation, that information is also given following each description. Such designations include those listed here:

National Historic Landmark: The Secretary of the Interior grants landmark designation to those sites that are significant in a given field, are associated with notable figures and events, and whose original and intangible elements that contribute to its national significance are still intact. As of 1996 there were more than 2,200 National Historic Landmarks.

National Register of Historic Places: The National Historic Preservation Act of 1966 authorized the National Register of Historic Places as the nation's official list of historic places worth preserving. Sites in the National Register may be listed independently or as part of a designated historic district. As of 1996, more than 65,000 sites were listed.

Historic Hotels of America: The National Trust hotel marketing association comprises and promotes a select group of historic properties that are at least 50 years old, have maintained their historic integrity, architecture, and ambiance, and are listed in, or eligible for, the National Register of Historic Places, or are recognized locally as having historic significance.

National Trust for Historic Preservation Historic Sites: These sites are house museums and *architecturally significant properties owned by the National Trust*.

INTRODUCTION •••••

Listing in state and local historic registers, landmark, and historic marker programs.

Awards for historic preservation, restoration, and similar achievements.

The final section provides general information on the site's location, capacity, food service, limitations, and other features. But please note the following:

General information on location/directions includes nearby airports, major travel routes, and distances to major cities in the area. Travel times are based on car travel unless otherwise noted.

Meeting space identified is based on the maximum capacity per room style (such as conference or banquet style); total guest capacity may exceed that given if an event uses more than one room.

“Breakfast with room” indicates that breakfast is included in the rates for overnight accommodations. **“Modified American Plan”** refers to breakfast and dinner included with room; **“Full American Plan”** refers to breakfast, lunch, and dinner with room.

Facilities open year-round may not be open on a particular holiday, and the prices of meeting rooms and, particularly, guest rooms (although not listed here), may vary, depending on the season.

“Restrictions on smoking” may mean that smoking is permitted only outdoors, or only in some areas indoors.

There may be a number of other limitations and restrictions on the use of meeting space, including details on decorations, music, contractual matters, and other items not included here. Those policies should be spelled out further by each site when you are booking an event.

Available on-site parking may be limited or difficult for large groups; we have made note of it where possible, but be sure to check when making plans.

Abbreviations for credit cards are as follows:

AmEx = American Express; DC = Diners Club; MC = Master Card.

ACKNOWLEDGMENTS

Many thanks go to Tracy Steeneck for her skillful management of this project, and to Mary Billingsley, Sarah Cooke, Michael Di Rienzo, Beth Kenny, and Scott Gerloff for their assistance on this book.

CÖNTEÑTS

vii Introduction

1	ALABAMA	190	NEBRASKA
4	ALASKA	192	NEVADA
5	ARIZONA	194	NEW HAMPSHIRE
9	ARKANSAS	199	NEW JERSEY
12	CALIFORNIA	205	NEW MEXICO
39	COLORADO	210	NEW YORK
45	CONNECTICUT	228	NORTH CAROLINA
55	DELAWARE	234	NORTH DAKOTA
57	DISTRICT OF COLUMBIA	235	OHIO
72	FLORIDA	240	OKLAHOMA
83	GEORGIA	242	OREGON
94	HAWAII	246	PENNSYLVANIA
97	IDAHO	265	RHODE ISLAND
98	ILLINOIS	269	SOUTH CAROLINA
107	INDIANA	272	SOUTH DAKOTA
110	IOWA	274	TENNESSEE
115	KANSAS	283	TEXAS
117	KENTUCKY	302	UTAH
120	LOUISIANA	304	VERMONT
126	MAINE	317	VIRGINIA
131	MARYLAND	344	WASHINGTON
142	MASSACHUSETTS	348	WEST VIRGINIA
170	MICHIGAN	349	WISCONSIN
175	MINNESOTA	355	WYOMING
179	MISSISSIPPI		
183	MISSOURI	357	Index
187	MONTANA	363	Subject Index

ALABAMA

EUFULA

KENDALL MANOR BED AND BREAKFAST INN

534 W. Broad Street, Eufaula, AL 36027

Phone: 334/687-8847 Fax: 334/616-0678

CONSTRUCTION of Kendall Manor began in 1860, but with the onset of the Civil War building came to a halt and it was not completed until 1872. Plantation owner James Turner Kendall, a successful dry goods merchant, hired local architect George Whipple to design the mansion and supervise construction. The Italian Renaissance style

house has traces of several other architectural styles, perhaps as a result of the extended time needed for its completion. The majestic belvedere, with its rounded arch windows that opened to ventilate the house, also served as Kendall's observation tower, where he could watch boats carrying his business cargo arrive on the Chattahoochee River. Also of note are the mansion's 16-foot ceilings, gold leaf cornices, marble mantelpieces, and the etched ruby glass around the entrance doors. The manor is furnished with antiques and period furniture, including pieces original to the house. Group meeting space is available in the parlor, dining room, and breakfast room. A wraparound verandah and deck overlook the gardens, and an upstairs sitting porch allows visitors to relax and enjoy the elegance of this antebellum home. Lake Eufala, created in 1973 when the river was dammed, is just seven blocks away.



Kendall Manor

Listed in the National Register of Historic Places

Location: Kendall Manor is located two blocks from the intersection of Route 431 and US 82 and is on the Alabama-Georgia border, 52 miles southwest of Columbus, Georgia. Air service is a 1 hour drive away in Columbus and Dothan, Alabama, and 1.5 hours from Montgomery.

Function Space: 1,320 square feet; 3 rooms

Capacity—Conference: 40; Reception: 125; Banquet: 60

Equipment On-site: Slide projector and screen, overhead projector, fax, copier

Food Service: Breakfast with room; either in-house or outside catering available

Overnight Accommodations: 6 rooms

Limitations/Restrictions: No smoking; no children under 14; no pets

Access: On-site parking, open year-round

Payment: Check, credit card

MOBILE

RADISSON ADMIRAL SEMMES HOTEL

251 Government Street, Mobile, AL 36602

Phone: 334/432-8000 Fax: 334/405-5942

E-mail: Roominfo@adadmSemmes

ADMIRAL Raphael Semmes, for whom the hotel was named, is one of Alabama's most distinguished figures, a lawyer, writer, and editor who served as the only commander of the Confederate ship *Alabama*. Under his leadership the *Alabama* destroyed or captured 82 Union vessels before it sank in battle in 1864. Semmes survived and later became Admiral of the James River Fleet. In 1940, Mobile celebrated the opening of the Admiral Semmes Hotel, but with the 12-story building's construction occur-

ring toward the end of the Great Depression, its symmetrical brick facade was simple and restrained. However, the hotel's grand interiors—from the marble staircase and floors to the Art Deco brass elevator doors—made for a vivid contrast. Hurricane Frederick caused considerable damage to the building in 1979, but six years later the beautifully renovated and restored luxury hotel reopened. Meeting space includes a variety of function rooms, ranging from the splendid Crystal Ballroom to the handsomely appointed Directors Room. Located in the Conde Historic District, the Admiral Semmes Hotel is just two blocks from Mobile's civic center and is convenient to a number of museums. Other area attractions include Bellingrath Gardens and the USS *Alabama* Battleship Memorial Park.

Member of Historic Hotels of America

Location: The Radisson Admiral Semmes Hotel is accessible via I-10 and I-65, and is just 11 miles from the Mobile Regional Airport. Limousine, bus, and taxi service available.

Function Space: 5,850 square feet; 7 rooms

Capacity—Conference: 80; Reception: 450; Banquet: 300; Theater: 450

Equipment On-site: Audiovisual equipment available

Food Service: Catering/food service available; restaurant and lounge

Overnight Accommodations: 170 rooms

Limitations/Restrictions: Restrictions on smoking; all food and beverage service must be provided by hotel

Access: Handicapped accessible; on-site parking; open year-round

Payment: Cashier's check or major credit card

THE WOMAN'S CLUB

1200 Government Street, Mobile, AL 36606
 Phone: 334/432-4452 Fax: 334/476-8484

ARCHITECT George B. Rogers, known for a number beautiful buildings in the area, designed this stately 1905 Greek Revival mansion in Mobile's Old Dauphin Way Historic District, one of the largest historic districts in the country. The house remained a private residence until 1929, when the Woman's Club purchased it for their clubhouse. Four hundred members strong, the group sought to promote the advancement of education, civic duty, art and literature, and community service, and among its founders was Bessie Bellingrath, owner of the famous Bellingrath Gardens. Today the house, with its Victorian decor, is available for meetings, banquets, weddings, receptions, and other gatherings. Groups may use the entire first floor, with its Great Hall (originally a ballroom), parlor and dining room, or individual rooms as needed. An upstairs sitting room is also available for meetings, and groups may tent the front yard as well. The club also provides lists of recommended vendors for all

occasions and has plenty of tables and chairs on hand. The Woman's Club has been recognized by the Mobile Historic Development Commission for excellence in preservation and maintenance of a building.

Listed in the National Register of Historic Places

Location: Mobile is 2.5 hours east of New Orleans and 6 hours south of Atlanta and is accessible via I-10, I-65, Highway 90 and Highway 98. The Mobile Municipal Airport is 6 miles from the Woman's Club.

Function Space: In 3 rooms; or entire floor first can be rented

Capacity—Conference: 300; Reception: 300; Banquet: 160

Equipment On-site: Microphones, lectern, speakers, CD player

Food Service: Catering through the Woman's Club available, or client may use outside caterer; full kitchen available

Limitations/Restrictions: Restrictions on smoking

Access: On-site parking; open year-round

Payment: Cash, check

ALASKA

PALMER

COLONY INN

(Mailing address)

P.O. Box 118

(Street address)

325 E. Elmwood, Palmer, AK 99645

Phone: 907/745-3330 Fax: 907/746-3330

IN 1935 more than 200 families from the drought-stricken Midwest arrived in Palmer to establish a farming community. The Matanuska Colony project was part of President Roosevelt's New Deal; not only did it prove a success, but farmers in the area are still known for producing huge vegetables. By 1936 a dormitory was built to house traveling teachers brought in to instruct local children, and a number of other facilities had sprung up as well, including a trading post, barber shop, bakery, and hospital. Today the restored Teachers' Dormitory is the Colony Inn, whose wooded, lodge-like exterior hints at the cozy rooms found inside. The individually decorated guest rooms are furnished with antiques, and most have whirlpool tubs as well. The great room and the dining room, with their original, beautiful wood paneling, are available for group meetings. The Colony Inn is located in the Matanuska Maid historic district, where it enjoys mountain views in the scenic Matanuska Valley. A self-guided walking tour of the town reveals both Palmer's Midwestern roots and its frontier character, as many of the original buildings remain.

Listed in the National Register of Historic Places

Location: Palmer is located 45 minutes northeast of Anchorage and is accessible via AK 1.

Function Space: 2 rooms

Capacity—Conference: 30; Reception: 100

Banquet: 30

Food Service: Catering/food service available; restaurant

Overnight Accommodations: 12 rooms

Limitations/Restrictions: No smoking

Access: Handicapped accessible; on-site parking; open year-round

Payment: Cash, check, credit card

ARIZONA

PHOENIX

PUEBLO GRANDE MUSEUM

4619 E. Washington Street, Phoenix, AZ 85034-1909
Phone: 602/495-0901 Fax: 602/495-5645

PERHAPS one of the more unusual settings for a business meeting or social event is the Pueblo Grande Museum, a complex that encompasses the ruins of a Hohokam town dating back to A.D. 500–1450. The Hohokam people lived in southern and central Arizona beginning at about A.D. 1, building prosperous communities that often featured platform mounds and ballcourts. Excellent farmers, the Hohokam built hundreds of miles of irrigation canals to grow corn, beans, squash, and cotton. They also created beautiful red-on-buff pottery, textiles, and jewelry, as seen on display in the museum. Whether as a result of natural disasters or because of internal conflict, the Hohokam left the area around the mid-fifteenth century, and the town was in ruins when Spanish explorers arrived in the sixteenth century. At one time the town covered about 500 acres, and today 100 acres have been preserved. The Pueblo Grande Museum, adjacent to a platform mound, is the repository for materials and artifacts found during archeological projects conducted in Phoenix. Meetings, receptions, and other functions are held in the museum's community room, and groups can arrange in advance for site presentations and museum visits as part of their events.

Listed in the National Register of Historic Places

Location: The Pueblo Grande Museum is located in downtown Phoenix and is accessible via I-10 and Route 143. The museum is just minutes from Sky Harbor International Airport.

Function Space: 2,300 square feet; 1 room

Capacity—Conference: 100; Reception: 300; Banquet: 100; Theater: 200

Equipment On-site: Projection TV, slide and overhead projectors, public address system

Food Service: Food service must be provided by a licensed caterer; museum has caterers list available

Limitations/Restrictions: No smoking

Access: Handicapped accessible; on-site parking; open year-round

Payment: Check

PRESCOTT

HASSAYAMPA INN

122 East Gurley, Prescott, AZ 86301
Phone: 520/778-9434 Fax: 520/445-8590

THE Hassayampa Inn, named with an Indian word meaning "river that loses itself," was built in 1927 as "Prescott's Grand Hotel." Improved highways and the increase in automobile travel made the inn and Prescott a popular destination. Architect Harry Trost's Pueblo Art Deco facade was toned down to a simpler brick design in the early stages of construction at the request of local citizens to better suit their Midwestern sense of style, and the elegant lobby is known for its painted ceiling of Southwestern motifs. Cozy guest rooms are furnished with lace curtains and oak period furniture, and room rates include breakfast and a welcoming cocktail. The conference center with state-of-the-art equipment comprises six handsome meeting rooms available for both business and social events. All-day dining is available in the Hassayampa's

acclaimed Peacock Room, known for its innovative entrées. Prescott enjoys cool, "mile-high" temperatures and beautiful pine-shaded scenery while offering a number of attractions and activities, including pioneer and Indian museums, golf, horseback riding, and hiking, and the world's oldest rodeo.

Listed in the National Register of Historic Places; member of Historic Hotels of America

Location: Prescott is less than two hours north of Phoenix and is accessible via I-17, Route 69, and Route 89.

Function Space: 3,000 square feet; 6 rooms

Capacity—Conference: 70; Reception: 120; Banquet: 110; Theater: 150

Equipment On-site: TV, VCR, slide and overhead projectors, flip chart, dataports available

Food Service: Breakfast with room; catering /food service available; restaurant

Overnight Accommodations: 68 rooms

Limitations/Restrictions: Restrictions on smoking; all catering provided by hotel; all alcoholic beverages must be purchased on-site

Access: Handicapped accessible; on-site parking; open year-round

Payment: Cash, check, credit card

SCOTTSDALE

MARRIOTT'S CAMELBACK INN RESORT, GOLF CLUB & SPA

5402 E. Lincoln Drive, Scottsdale, AZ 85253

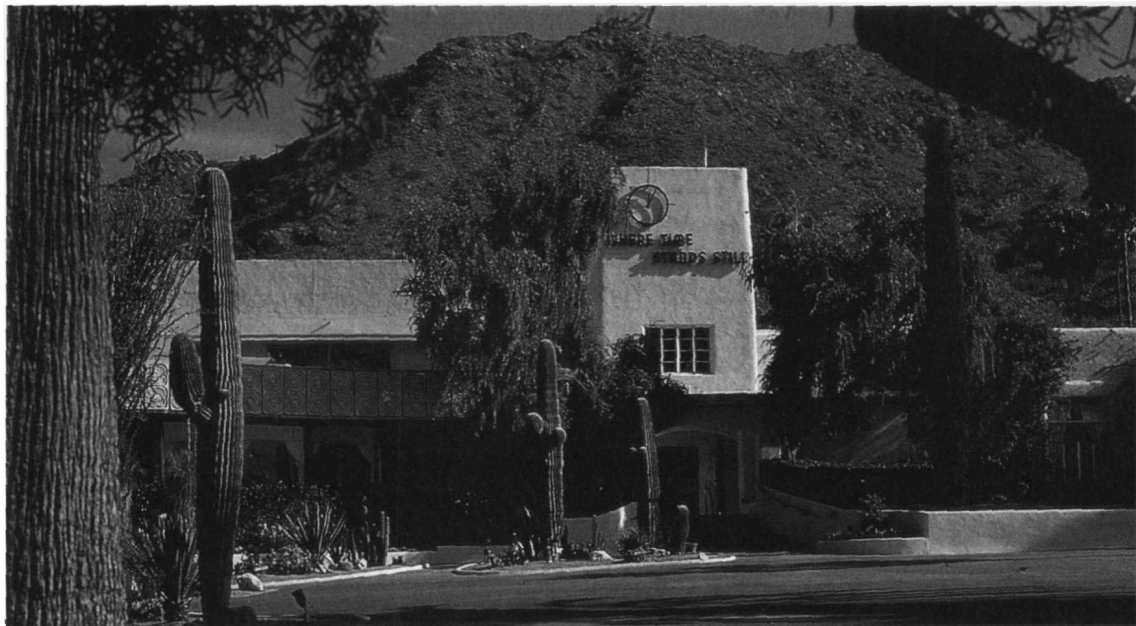
Phone: 602/948-1700 or 800-24-CAMEL

Fax: 602/951-8469

WITH its distinctive Pueblo-style architecture, the Camelback Inn Resort is set on 125 acres of naturally landscaped desert. Surrounded by the Camelback and Mummy mountains, the resort was an immediate success when it opened in 1936 and became a popular destination for many



Hassayampa Inn



Marriott's Camelback Inn

of Hollywood's Golden Age celebrities. A wide variety of rooms are available for a full range of social and business events, including conventions, conferences, receptions, and exhibitions. The unique Board Room features a ceiling of hand-carved kiva logs, Native American artwork, and exceptional audiovisual facilities. Guests stay in Pueblo-style casitas with private patios or balconies; some suites even have private pools. A variety of restaurants and lounges are available, including the Chaparral, which serves fine continental fare. A full-service resort, the Camelback offers a world-class European health spa, fitness and exercise facilities, two acclaimed 18-hole USGA championship golf courses, and numerous facilities for a variety of other sports. Other activities available nearby include desert jeep tours, hot air ballooning, river float trips, and horseback riding. The resort can also help meeting planners arrange special group activities and themed events.

Location: The Camelback Inn is 10 miles northeast of Phoenix Sky Harbor Airport in Paradise Valley, minutes from downtown Scottsdale and Phoenix, and is accessible via Squaw Peak Parkway (Route 51), I-10, and Loop 202.

Function Space: 40,000+ square feet; 24 rooms

Capacity—Conference: 750; Reception: 2,500; Banquet: 1,000; Theater: 1,500

Equipment On-site: Audiovisual equipment and business services

Food Service: Catering/food service available; six restaurants, lounge

Overnight Accommodations: 427 rooms

Limitations/Restrictions: Restrictions on smoking

Access: Handicapped accessible; on-site parking; open year-round

Payment: Cash, check, credit card (AmEx, Diners Club, MC, Visa)