

中国·辽阳

LIAOYANG · CHINA

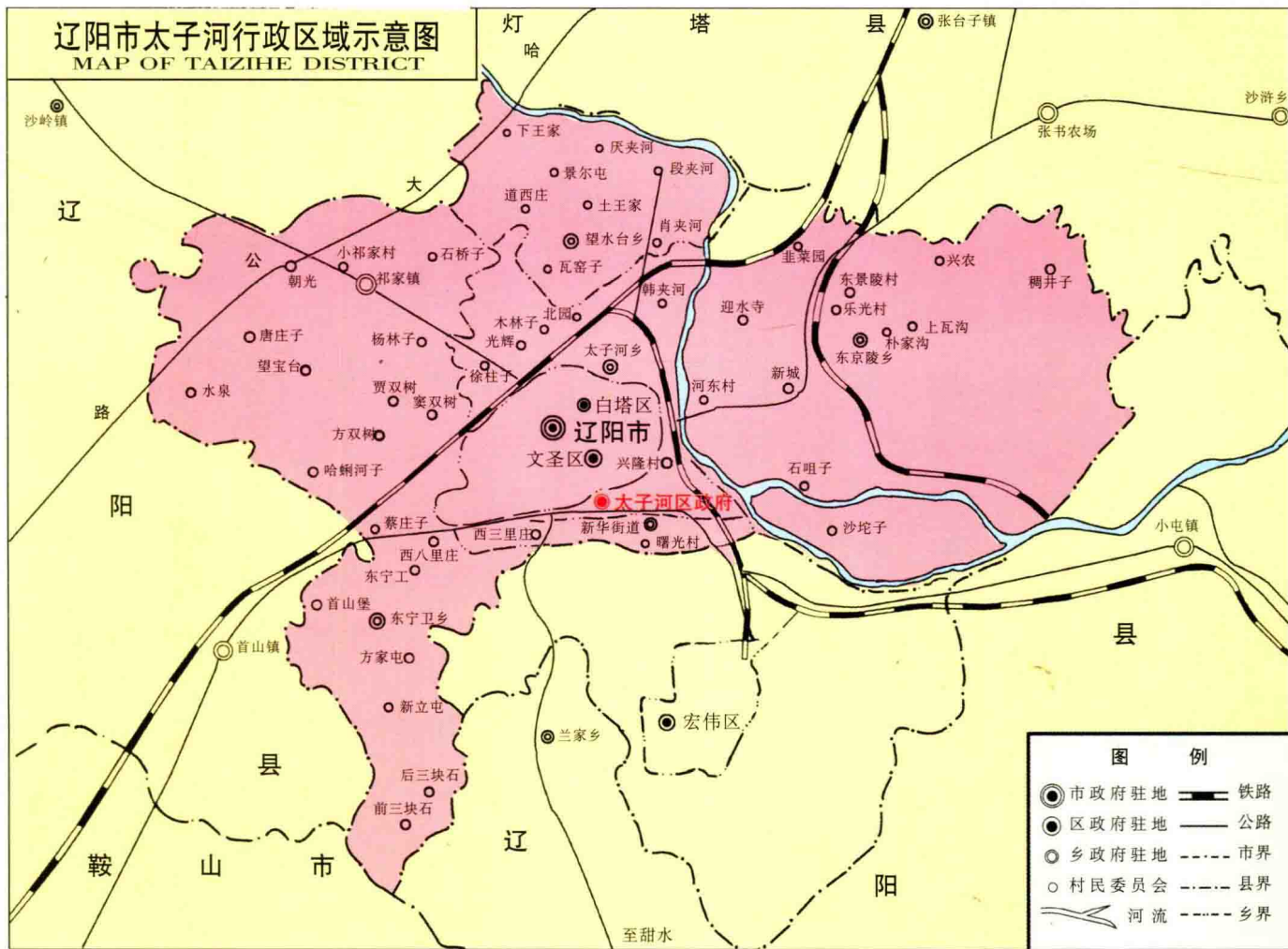
太子河区

TAIZHE DISTRICT



# STRICT

# 太子河区



辽阳市在辽宁省的地理位置  
Location of Liaoyang in Liaoning Province



区政府办公大楼 Office building of district government



辽阳市太子河区人民政府编

一九九九年八月

EDITED BY PEOPLE'S GOVERNMENT OF TAIZIHE DISTRICT OF LIAOYANG  
AUGUST 1999 - 8

地 址:辽宁省辽阳市青年街 57 号

电 话:0419 - 4123708 4122366

传 真:0419 - 4122076 4125726

电子邮箱:ly - tzh @ 163.net 邮编:111000

招商办:0419 - 4122366 4125726

ADDRESS: No. 57 QINGNIAN STREET,

LIAOYANG LIAONING PROVINCE

TEL: 0419 - 4123708 4122366

FAX: 0419 - 4122076 4125726

E - MAIL: ly - tzh @ 163.net ZIP CODE: 111000

BUSINESS AFFAIRS OFFICE: 0419 - 4122366 4125726

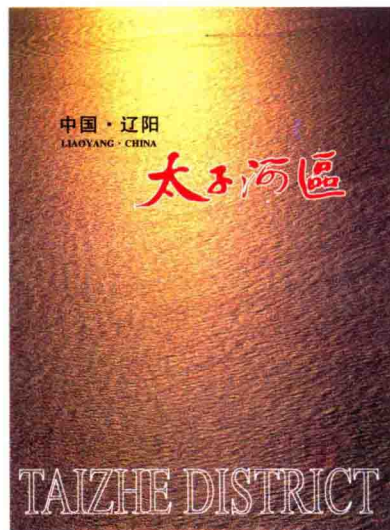
# TAIZIHE DISTRICT

中国·辽阳

LIAOYANG · CHINA

## 目录 CONTENT

02 页	目录、编委会
1 页	太子河行政区域示意图
2-3 页	阔步前进中的太子河区
4-5 页	亲切的关怀
6-7 页	优越的地理位置
8-13 页	迅猛发展的区乡工业
14-17 页	方兴未艾的外向型经济
18-23 页	生机勃勃的两高一优农业
24-27 页	蓬勃发展的第三产业
28-31 页	欣欣向荣的文教卫生事业
32-33 页	灿烂的古代文化
02	CONTENT EDITING COMMITTEE
1	MAP OF TAIZIHE DISTRICT
2-3	TAIZIHE DISTRICT IN STRIDING FORWARD
4-5	KIND SOLICITUDE
6-7	SUPERIOR LOCATION
8-13	FLOURISHING SUBDISTRICT INDUSTRY
14-17	RISING OPENING-UP ECONOMY
18-23	HIGH YIELD AND EFFICIENT AGRICULTURE
24-27	VIGOROUSLY DEVELOPING THIRD ESTATE
28-31	THRIVING CULTURE EDUCATION AND HEALTH
32-33	SPLENDID ANCIENT CULTURE



《中国·辽阳太子河区》编委会

主编:高军 徐明岐

副主编:郝春荣 杜习智

责任编辑:孙明 赵鸿野

编辑:李德琦 陈秀庆

策划:李顺龙

封面题字:董文

图片摄影:陈秀庆

美术设计:陈秀庆

英文翻译:巢锴

图文制作:王杨 邱春姣

督印:沈阳广昊摄影设计制版有限公司

《TAIZIHE DISTRICT LIAOYANG · CHINA》EDITING COMMITTEE

EDITORS-IN-CHIEF:GAOJUN, XU MINGQI

DEPUTY EDITORS:HAO CHUNRONG, DU XIZHI

EXECUTIVE EDITORS:SUN MING, ZHAO HONG YE

EDITOR:LI DEQI, CHEN XIUQING

DESIGN:LI SHUNLONG

COVER HANDWRITING:DONG WEN

PHOTOGRAPHY:CHEN XUQING

ARTS DESIGN:CHEN XUQING

ENGLISH TEXT:CHAO KAI

PICTURE AND TEXT PRODUCERS:WAN YANG, DI CHUNJIAO

PRINT SUPERVISOR: SHENYANG GUANGHAO PHOTOGRAPHY,

DESIGN AND PRINTING PLATE CO., LTD.



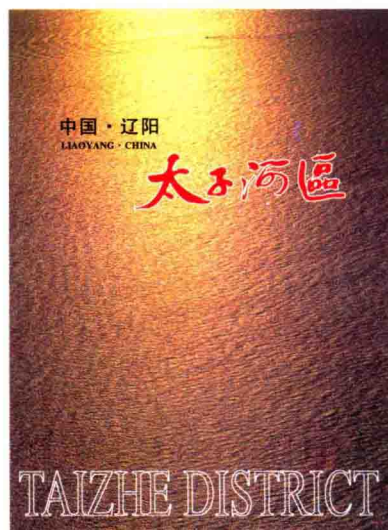
# TAIZIHE DISTRICT

中国·辽阳

LIAOYANG · CHINA

## 目录 CONTENT

02 页	目录、编委会
1 页	太子河行政区域示意图
2-3 页	阔步前进中的太子河区
4-5 页	亲切的关怀
6-7 页	优越的地理位置
8-13 页	迅猛发展的区乡工业
14-17 页	方兴未艾的外向型经济
18-23 页	生机勃勃的两高一优农业
24-27 页	蓬勃发展的第三产业
28-31 页	欣欣向荣的文教卫生事业
32-33 页	灿烂的古代文化
02	CONTENT EDITING COMMITTEE
1	MAP OF TAIZIHE DISTRICT
2-3	TAIZIHE DISTRICT IN STRIDING FORWARD
4-5	KIND SOLICITUDE
6-7	SUPERIOR LOCATION
8-13	FLOURISHING SUBDISTRICT INDUSTRY
14-17	RISING OPENING-UP ECONOMY
18-23	HIGH YIELD AND EFFICIENT AGRICULTURE
24-27	VIGOROUSLY DEVELOPING THIRD ESTATE
28-31	THRIVING CULTURE EDUCATION AND HEALTH
32-33	SPLENDID ANCIENT CULTURE



《中国·辽阳太子河区》编委会

主编:高军 徐明岐

副主编:郝春荣 杜习智

责任编辑:孙明 赵鸿野

编辑:李德琦 陈秀庆

策划:李顺龙

封面题字:董文

图片摄影:陈秀庆

美术设计:陈秀庆

英文翻译:巢锺

图文制作:王杨 邱春姣

督印:沈阳广昊摄影设计制版有限公司

《TAIZIHE DISTRICT LIAOYANG · CHINA》EDITING COMMITTEE

EDITORS-IN-CHIEF:GAOJUN, XU MINGQI

DEPUTY EDITORS:HAO CHUNRONG, DU XIZHI

EXECUTIVE EDITORS:SUN MING, ZHAO HONG YE

EDITOR:LI DEQI, CHEN XIUQING

DESIGN:LI SHUNLONG

COVER HANDWRITING:DONG WEN

PHOTOGRAPHY:CHEN XUQING

ARTS DESIGN:CHEN XUQING

ENGLISH TEXT:CHAO KAI

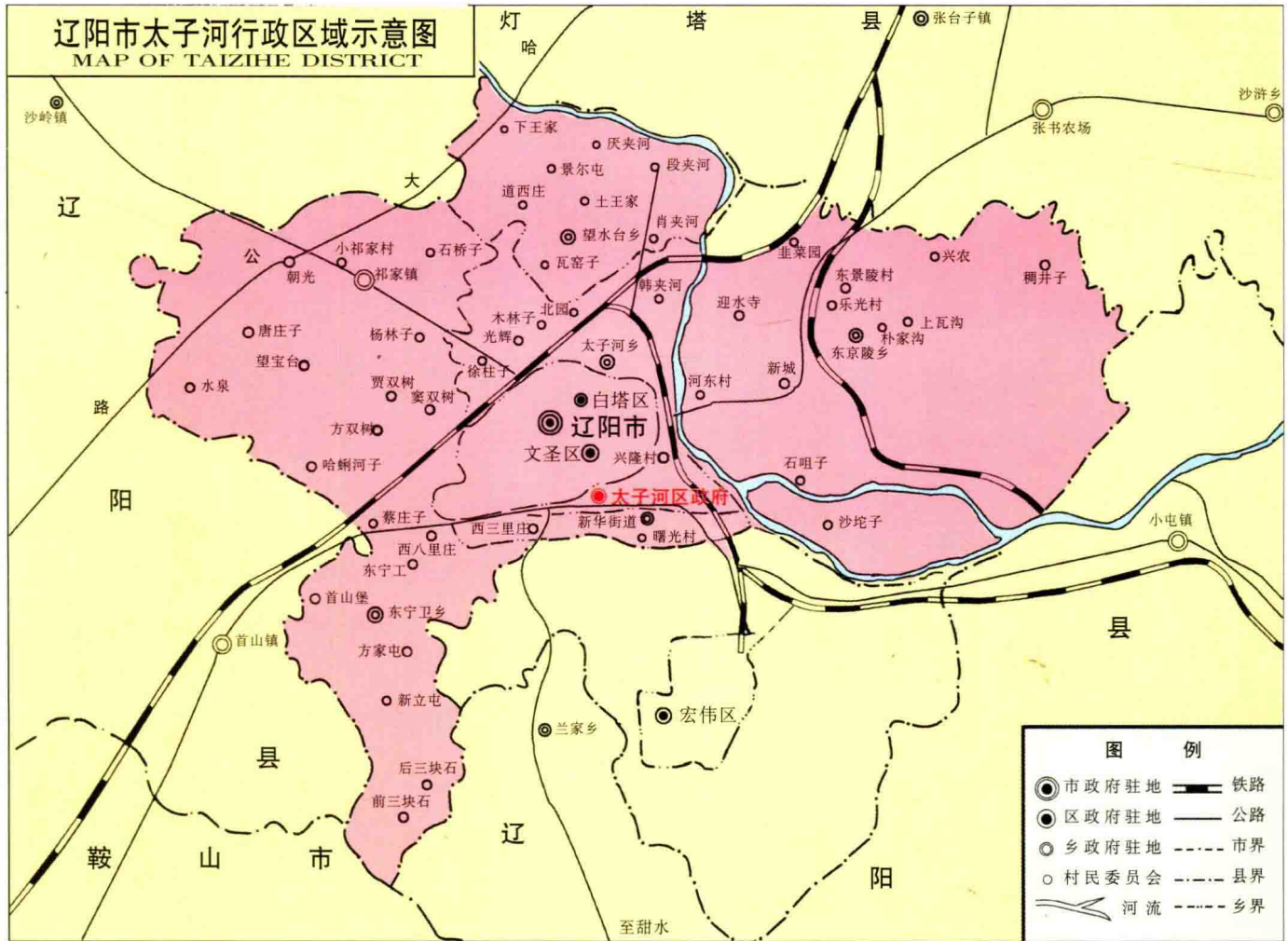
PICTURE AND TEXT PRODUCERS:WAN YANG, DI CHUNJIAO

PRINT SUPERVISOR: SHENYANG GUANGHAO PHOTOGRAPHY,

DESIGN AND PRINTING PLATE CO., LTD.

# STRICT

# 太子河区



辽阳市在辽宁省的地理位置  
Location of Liaoyang in Liaoning Province



区政府办公大楼 Office building of district government





# 阔步前进的

中共太子河区区委书记

**王海浩**

Secretary of CPC Taizihe District Committee

WANG HAI HAO

## 太子河区简介

太子河区位于美丽富饶的辽东半岛中部,属辽阳城区之一,地处城乡结合部,环绕城市四周,辖四乡一镇一街,总面积 196.9 平方公里,人口 13 万。

太子河区自然资源丰富,土质肥沃,是辽东半岛中部城市群的副食品生产基地之一。矿产资源煤、石灰石、河流石、粘土等资源贮量可观。

太子河区地理位置优越、交通便利。长大铁路横亘南北,辽溪铁路纵贯东西,沈大高速公路穿越境内,南接营口鲅鱼圈港、大连港,北衔桃仙国际机场。

近年来,全区国内生产总值、财政收入、农民人均收入都有较大幅度增长,提前实现了“小康区”的目标。农业基础地位进一步加强,传统农业向现代农业转变的步伐明显加快,形成了以粮食、蔬菜、畜牧、林果、花卉为主导的,具有城郊特色的农业格局。区乡工业基础较好,初步形成了以钢材加工、机械制造、化工化纤、建筑材料和轻工工艺为主导的产业框架。外向型经济突飞猛进,现有“三资”企业 29 家,出口专业厂 7 家,产品远销世界各地。第三产业在国民经济中的比重明显提高,市场体系、社会化服务体系和社会保障体系日趋完善。闻名全国的汉魏壁画墓群和清代东京城、东京陵等旅游资源,展示了太子河区浓厚的文化底蕴。教育、卫生等各项社会事业蒸蒸日上。城乡基础设施条件明显改善,乡、村两级道路全部实现了柏油化。通讯、电力事业被省命名为电气化区和电话区。

太子河区经济发展前景广阔,各项事业方兴未艾。勤劳、诚实、热情、好客的太子河人热切盼望着有识之士的光临与合作。



# 中 太子河区

太子河区区长

郝春荣

Head of Taizihe District

HAO CHUN RONG



## INTRODUCTION OF TAIZIHE DISTRICT

Located in the centre of beautiful and fertile Liaoning Peninsula, with an area of 196.9 square kilometres and a population of 130 thousand, Taizihe District is one district of Liaoyang city and lies in suburb of the city. Taizihe has four counties, one village and one street.

Taizihe is rich in natural resources and fertile soil. It is food producing base of cities in the middle of Liaodong Peninsula. There are abundant mineral resources and large amount of reserve of coal, limestone, riverstone and clay.

Taizihe has a good location and convenient transportation. Chanchun - Dalian railway from north to south and Liaoxi railway from east to west are across it. Shenda highway pass through it, which is next to Bayuquan port of Yingkou, Dalian port in the south and Taoxian International Airport in the north.

In recent years, the GNP of our district's income and farmers' average income have increased to a great extent. The purpose of "Xiaokang District" was realized earlier than expected. The basic position of agriculture has been further enhanced. The step from traditional agriculture to modern agriculture has been speeded. An agriculture pattern with suburb characteristic has been established. The District's industrial base is good. Estate structure dominated by steel manufacturing, machinery producing, chemical industry and chemical fibre, construction materials and light industrial technology is preliminarily set up. Opening - up economy is developing fast. There are 29 foreign investment and joint - venture enterprises and 7 factories manufacturing export products, which are sold to all over the world. The proportion of third estate has apparently risen in economy. Market system, social service system and social welfare system are gradually improved. Nation famous touristy resources - Han, Wei wall - drawing tombs, Dongjing Tombs show long culture history of Taizihe district. Social causes such as education, health are flourishing. Capital facilities situations are improved apparently. The two class roads - county and village - are all asphalt road. The district was named electrified and telephone district.

Taizihe district has a hopeful economic development prospect. All the causes are rising. Laborious, honest, warm - hearted and hospitable Taizihe people hope our friends visit and cooperation.



# 亲切的关怀

KIND SOLICITUDE.



姜春云同志来区视察工作 Jiang Chunyun inspects district



孙春兰同志来区视察工作 Sun Chunlan inspects district







王怀远同志参观温室花卉种植  
Wan Huaiyuan visit greenhouse and vegetables planting



徐文才同志视察农业生产情况 Xu Wencai inspects agriculture



顾金池同志来区参加植树活动 Gu Jingchi comes to plant trees



市领导来区检查指导工作 Municipal leaders inspect and guide work



驻军首长、市领导来区参加军民共建活动  
Military officials and municipal leaders join activities





# 优越的地理位置 SUPERIOR LOCATION

长大铁路横亘南北，辽溪铁路纵贯东西，沈大高速公路穿越全境，辽阳市六大出入口全部座落于我区境内。乘汽车到达桃仙国际机场仅需 50 分钟；距千山风景区仅 50 分钟里程；到达营口鲅鱼圈港 2 小时；到达大连港 4 小时。

Changda Railway is from north to south. Liaoxi Railway comes from west to east. Shenda Highway passes through the whole district. Six entrances of Liaoyang are all located in our district. Only 50 minutes' ride to Taoxian International Airport; 50 minutes' ride to Qianshan scenery spot; Two hours' ride to Bayuquan port of Yingkou; four hours' ride to Dalian Port.



辽阳街景 View of streets



沈大高速公路 Shenyang - Dalian



辽阳白塔 Liaoyang White Tower



座落区内高速公路出入口下王家站、朝光站  
Wanjia, Chaoguang stops of Shenda Highway



大连港码头 Dalian port



昼夜繁忙的铁路运输 Busy railway transportation



桃仙国际机场 Taoxian International Airport





电力丰富 气候适宜 Abundant electric power moderate climate



营口港 Yingkou Port



highway



千山风景区 Qianshan scenery spot



ational Airport



美丽的太子河畔 Beautiful Taizi River



# 迅猛发展的区乡工业

## FLOURISHING SUBDISTRICT INDUSTRY

随着改革开放的不断深入，区乡工业迅猛发展，企业素质不断提高，初步形成了钢材加工、机械制造、化工化纤塑料、建材、农副产品深加工、轻工工艺等具有地区特色的主导产业和一大批骨干企业群体。5.2米两步法无模冷旋压机及封头产品荣获美国彼兹堡国际发明与博览会金奖；LJ-1200型沥青砼搅拌机达到国际同类产品技术水平；无磷洗涤助剂、啤酒糖化罐、环丁砜、人造金刚石单体、可控光降解膜母料、自动灭火装置、微机变频调速自动给水设备、气液缓止阀门等一批产品，分别荣获国家及省部级优质产品证书。1998年末，年产值超千万元，利税超百万元的企业有28家，年产值超亿元，利税超千万元的企业2家。

With the deepening of opening-up, subdistrict industry develops rapidly. Enterprises qualities rise continuously. Lots of enterprises and dominant estate which includes steel manufacturing, machinery producing, chemical industry and chemical fibre and plastic, construction materials, agricultural products processing and light industrial technology are preliminarily set up. 5.2m two-step process containerless cold spinning machine and end plate products won the gold medal of America Pittsburgh International Invention Fair. LJ-1200 asphalt and concrete mixer reaches the advanced level among the same type products. Some products such as phosphore free washing assisant, beer saccharifier, sulfolane, man-made diamond monomer, controllable photodegradative film masterbatch, auto fire unit, computer-controlled adjusting speed water suppying equipment, gas-liquid buffering value get National or Provincial and Ministerial High Quality Products Certificates. By the end of 1998, there are 28 enterprises whose year output value is over ten million yuan and tax is over 1 million yuan. Two enterprises' year output value is over thousand million yuan and its tax is more than ten million yuan.



厂办公楼 Factory office building



# 辽阳大型钢管厂 LIAOYANG GREAT STEEL PIPE FACTORY



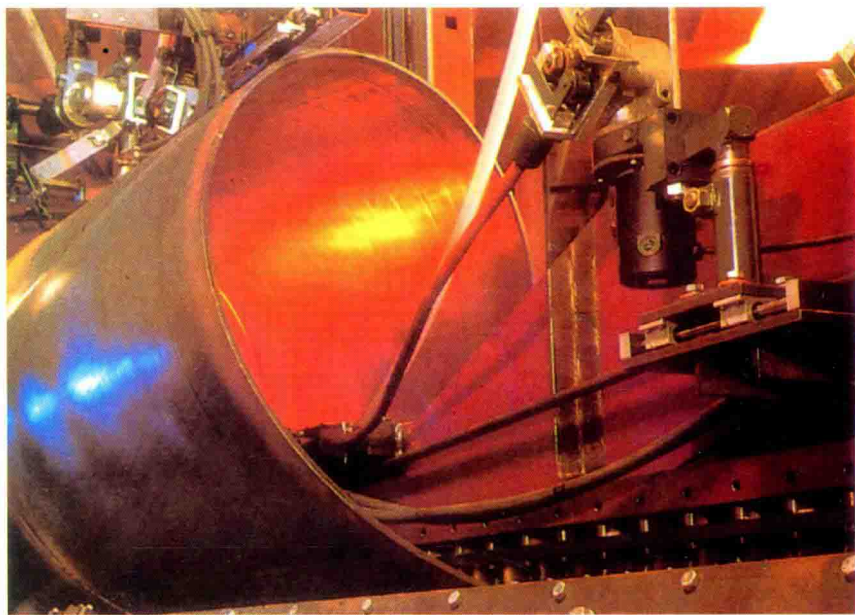
生产车间一角 Work shop

辽阳大型钢管厂是我区大型骨干企业，固定资产总值近 5000 万元。其主导产品螺旋焊管年产量可达 4 万吨，产品通过 ISO - 9002 质量体系认证，在东北同行业中处于领先地位，产品覆盖全国各地。近年来，年销售收入均超过亿元，年创利税 800 万元以上。

Liaoyang Great Steel Pipe Factory is large and dominant enterprise in our district, whose total amount of fix capital is nearly 50 million yuan. Year output of the main product screw welding pipe reaches 40 thousand tons. Ranking the leading place, the products reach ISO - 9002 standard and are sold to whole country. In recent years, the year selling income overpassed thousand million yuan each year. Year tax is over 8 million yuan.



X 射线探伤 X - ray Detector



焊管生产线 Welding pipe producing line



钢管外运 Transportation of products



# 辽宁石化安装公司

LIAONING PETROCHEMICAL INSTALLATION COMPANY



国内第一台 FX5200 - 32 mm 两步法无模冷旋压机设备  
First domestic FX5200 - 32mm Two - step proces containerlwee cold spinning machine



封头产品及其应用 End plate products



运往工地的抽提塔 Extraction tower

# 辽阳筑路机械有限公司

LIAOYANG ROAD CONSTRUCTION MACHINERY CO.,LTD.



LJ - 1200 型沥青砼“强制式”拌合设备系列产品  
LJ - 1200 Asphalt and Concrete "Force" Mixer





辽阳市金刚石制品厂

LIAOYANG DIAMOND PRODUCING FACTORY



厂区一瞥 View of factory

φ23 腔体人造金刚石单晶系列产品 φ23 Cavity man-made diamond monomer series

辽阳东兴曲轴总厂

LIAOYANG DONGXING BANT SHAFT FACTORY



492Q, 4125, 6130 型系列曲轴 492Q, 4125, 6130 Bant Shafts Series



FLOURISHING SUBDISTRICT INDUSTRY



# 辽宁石化阀门制造有限公司

LIAONING PETROCHEMICAL VALVE MANUFACTURING CO., LTD.



办公楼 Office building

通过 ISO - 9001 国家质量体系认证的阀门系列产品  
Valve Workshop gets ISO - 9001 Quality Certificate

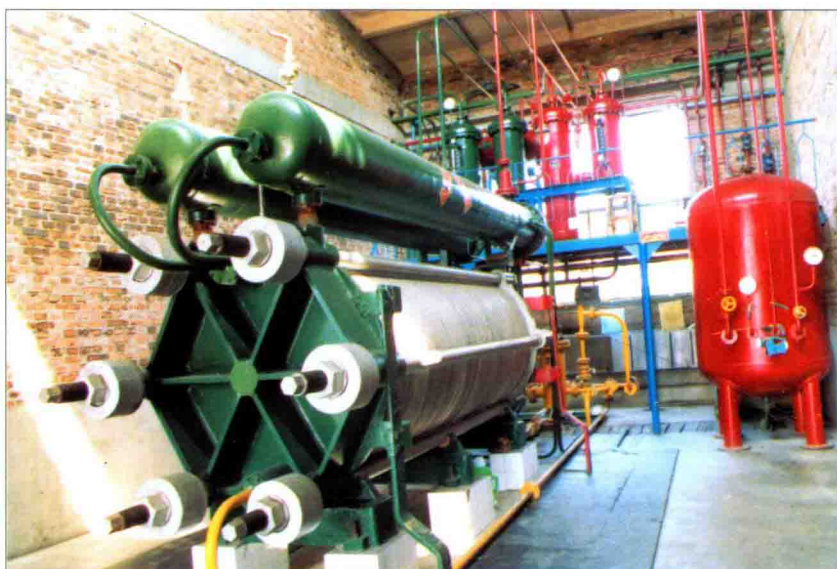


## 辽阳市锦隆化工集团

LIAOYANG JINLONG CHEMICAL PLANT



自动加氢系统装置 Auto Hydrogen filling Equipment



DY - 65 型制氢装置 DY - 65 Hydrogen Equipment

## 迅猛发展的区乡工业

## FLOURISHING SUBDISTRICT INDUSTRY