

秀洲

◎ 江南水乡一颗耀眼的明珠 ◎

Xiuzhou

The cradle of the "Yangtze River Delta"
A bright pearl in the water-bounded South China

• 中国·嘉兴 •
Jiaxing China

嘉兴·秀洲
一方秀丽的绿洲

XiuzhouJiaxing
a Fantastic Green Land



开篇

在中国长江三角洲的杭州湾东北部，有一颗璀璨的明珠——她就是1983年经国务院批准的县级区嘉兴市秀洲区。

秀洲一位于浙江省杭嘉湖平原，东邻上海，西靠杭州，南濒杭州湾，北接苏州，是上海经济区的黄金腹地，也是浦东开发区的理想延伸地，极具开发潜力。是国务院确定为先行规划、先行发展的重点沿海开放地区之一。全区总面积542平方公里，总人口38万，下辖5个镇、3个街道。

秀洲一自然条件优越，土壤肥沃，物产丰富，素有“丝绸之府、鱼米之乡”的美誉。盛产粮、油、茧、生猪、淡水鱼等农产品，是浙江省著名的农副产品生产基地。工业经济以轻纺丝绸、针织、服装、家具、电器、不锈钢器械、静电植绒、建材、电子、食品等为骨干行业，已形成纺织、电器、机械、家具、电子等特色产业和先进制造业基地。

秀洲一区域经济极富成长性和开放性，经济增势强劲。GDP、财政收入、居民人均收入等主要经济指标增幅高于“长三角”16个城市平均水平。近年来，秀洲区的经济增长率一直保持在15%以上，2002年人均GDP超2000美元，三资企业总投资年均增长100%以上，外贸出口年均增长50%以上，外资投资企业达180多家。服务业发展迅速、市场体系日趋完善。

秀洲一其前身即嘉兴县，始建于春秋时期，历史悠久，人杰地灵。历史上文人辈出，文化底蕴深厚，是文化部首批命名的“中国现代民间绘画画乡”之一。所在地嘉兴南湖既是中国共产党诞生地，又是浙江三大名湖之一。

建设新秀洲，融入大上海，在参与“长三角”新一轮发展中，秀洲区正全力实施开放带动、工业立区、科教兴区战略，全面推进产业现代化、城乡一体化和社会文明化进程，努力把秀洲建设成为“接轨上海的前沿阵地、先进的制造基地、招商引资的首选地、嘉兴沿路产业带的重要组成之地、嘉兴城市的副中心和现代产业的集聚区”。

嘉兴·秀洲

中国“长三角”的发源地

XiuzhouJiaxing

The cradle of the
“Yangtze River Delta”

•Foreword•

In the northeast part of Hangzhou Bay, Yangtze Delta of China, there lies Xiuzhou District, a **brilliant pearl in east China**. It is a county-level district approved to establish by the State Council in 1983.

Located in Hangzhou-Jiaxing-Huzhou Plain, Zhejiang Province, Xiuzhou District borders on Shanghai in the east, Hangzhou in the west, Hangzhou Bay in the south and Suzhou in the north. It is considered as the golden hinterland of Shanghai Economic Area as well as the ideal extension of Pudong Economic Development Zone and enjoys great development momentum. Covering an area of 542sq. km, Xiuzhou District has a population of 380,000 and has jurisdiction over five towns and three communities.

Endowed with advantageous natural condition, Xiuzhou District has long been famous as “the land of silk” and “the hometown of fish and rice”. Farm products such as grain, rape oil, cocoon, pig and fresh water fish are abundant in the district making it a famous production base in Zhejiang Province for side agricultural products. Textile, silk knitting, garment, furniture, electrical appliance, stainless apparatus, electrostatic flocking, building material, electron and foodstuff are the backbone industries of local industrial economy. Manufacturing bases featured by industries of textile, household electrical appliance, machinery, furniture, electronic and telecom have been formed in the city.

The regional economy of Xiuzhou District enjoys great growth and is highly opening-up. Major economic indexes such as GDP, annual fiscal revenue and per capita income of local residents witness higher growth rates than the average rate of the sixteen cities in the Yangtze Delta. In recent years, the economic growth rate of Xiuzhou District has maintained a level of over 15%. In 2002 the per capita net income exceeded US\$2000. Up till now over 180 foreign-funded enterprises have been established in Xiuzhou District, with an average annual total investment of foreign capital growing at a rate of over 100% and foreign export volume growing at a rate of over 50%. Meanwhile the tertiary industry also develops rapidly and the market system has been improving day by day.

Xiuzhou District, originally known as Jiaxing County, was initially built in the Spring and Autumn Warring Period. With a long history, rich cultural heritage and being the hometown of many famous literary scholars, it is one of the first group areas entitled as the “Hometown of China Modern Folk Painting” by the Ministry of Culture. Nanhu Lake is well known as the birthplace of the Communist Party of China, also as one of the three famous lakes of Zhejiang Province.

Now we are making great efforts to uplift the outlook of Xiuzhou District and actively participate in the new round development of Shanghai Economic Area as well as Yangtze Delta. We are committed to implement in full swing the strategy of taking foreign-oriented economy as driving force, focusing on industrial development and rejuvenating the District by science and technology. We are intensifying our endeavor to promote in all round the process of industrial modernization, integration of urban and rural areas and social civilization. What we strive for is to make Xiuzhou District the frontline to integrating with Shanghai Municipality, an advanced manufacturing base, the first choice for investment, an important consisting part of the municipal industrial belt, the sub downtown area of Jiaxing and the cluster of modern industries.



领导视察

● *Inspection of Officials from Central Government* ●

■ 作为党的诞生地，嘉兴秀洲备受党和国家领导人的关注及全国人民的瞩目。建区20年来，中央领导曾多次踏上秀洲这块美丽的土地视察和慰问，使秀洲人民深受鼓舞。



● 1999年10月5日，江泽民同志视察秀洲区
On October 5, 1999, Jiang Zemin inspected Xiuzhou District.



● 1991年7月21日，李鹏同志在秀洲区视察
On July 21, 1991, Li Peng inspected Xiuzhou District.

■ As the birthplace of the Communist Party of China, Xiuzhou District has attracted great attention from both officials of central government and the people. Ever since its establishment 20 years ago, officials of central government have paid personal visits to Xiuzhou District several times which greatly encouraged the local people.



● 1994年4月26日，朱镕基在秀洲视察工作
On April 26, 1994, Zhu Rongji was in Xiuzhou District on an inspection tour.



● 1999年7月11日，温家宝同志视察秀洲
On July 11, 1999, Wen Jiabao in spected Xiuzhou Districted

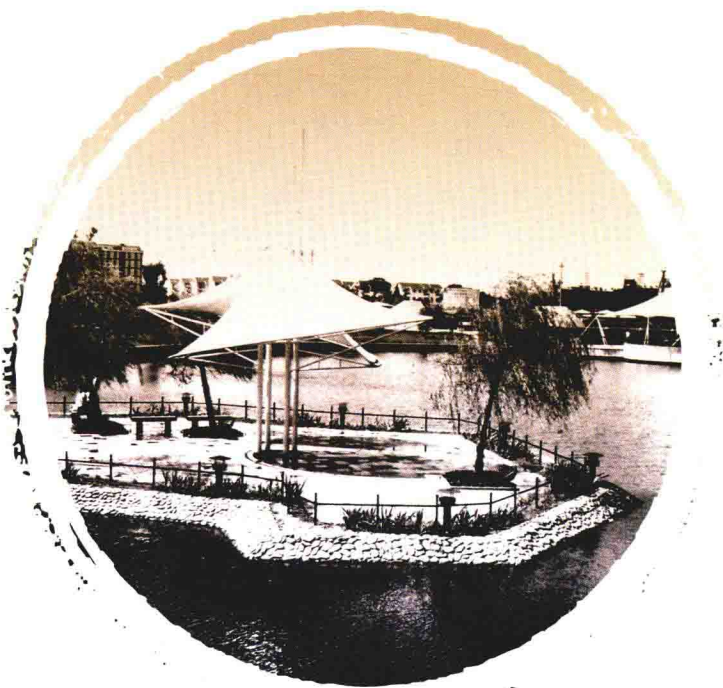


目录 / • Catalog •

● 秀水一方 · 黄金腹地	01
a Land of Water and a Place of Opportunity	
区位环境	05
Position and Environment	
人文历史	07
culture and history	
自然风光	11
Natural Landscape	
● 活力秀洲 · 新区感光	13
a Dynamic Area · a Look of the New Area	
城市新景	15
a New View of the City	
产业高地	19
Outstanding Industries	
招商亮点	21
Spotlights for Investment	
● 实力秀洲 · 经济强区	23
an Economically-Developed District	
现代农业	25
Modern Agriculture	
新型工业	31
Booming Industry	
第三产业	43
Tertiary Industry	
● 开放秀洲 · 文明新区	45
an Opening-up Land and a Culturally Advanced Area	
社会事业	47
Social Undertakings	
文化生活	51
Cultural Life	
对外交流	53
Exchanges with Foreign Countries and Regions	

东海之滨的杭州湾北岸，
绿色中镶嵌着美丽的嘉兴·秀洲，
她：古老而又年轻，
清秀而又纯朴……

On the north bank of Hangzhou
Bay in east coast of China,
harbors a dazzling pearl-- Xiuzhou District of Jiaxing City,
an ancient while energetic land full
of charm and purity.



秀洲

一方·黄金腹地

● a Land of Water and a Place of Opportunity ●



● 景色宜人的秀洲公园一隅 a Corner of the Picturesque Xiuzhou Park ●

秀洲·中国“长三角”的发源地

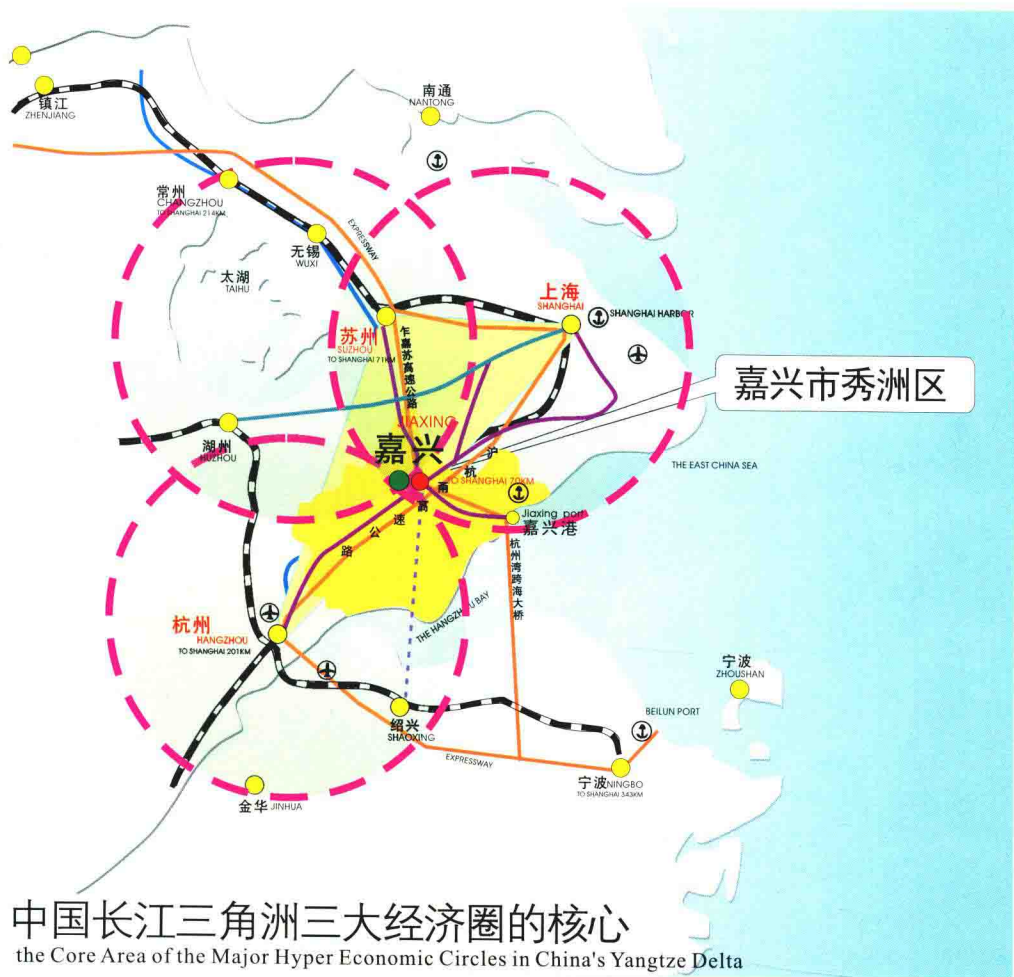
江南水乡一颗耀眼的明珠

Xiuzhou

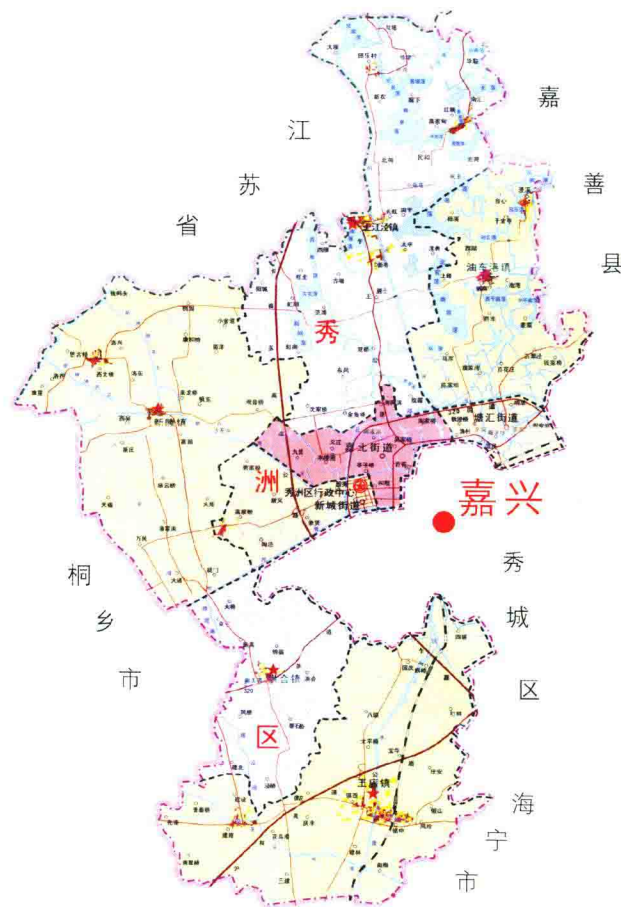
The cradle of the “Yangtze River Delta”
A bright pearl in the water-bounded South China

■ 嘉兴秀洲地形由东海淤沙冲击而成，地表形成已有一万余年。据上海有关经济史专家考证，“大上海”、“长三角”早就存在，这一带在唐元以前时期叫秀州。故此地有中国“长三角”发源地之说。而嘉兴在1983年撤地建市时，将原嘉兴县分设为城区、郊区，1999年6月，郊区更名时将古时秀州的“州”字上加了三点水，称为秀洲区。

■ Xiuzhou District is a plain deposited by the silts flushed from East China Sea over the last ten thousand years. According to the study of local historiographers, the name of “Mega Shanghai” and “Yangtze Delta” was heard long, long ago, this area was originally called “Xiuzhou” before Tang and Yuan dynasties, so comes the statement that this area is the origin of China's Yangtze Delta. In 1983 Jiaxing Area was administratively readjusted and the original capital city Jiaxing was divided into urban area and suburb area. And in June, 1999 the suburb area was renamed as Xiuzhou District, whose Chinese characters indicating a land of water.



● 秀洲在长三角的位置 the Location of Xiuzhou District in Yangtze Delta



● 嘉兴市秀洲区 Xiuzhou District of Jiaxing City



区位优势

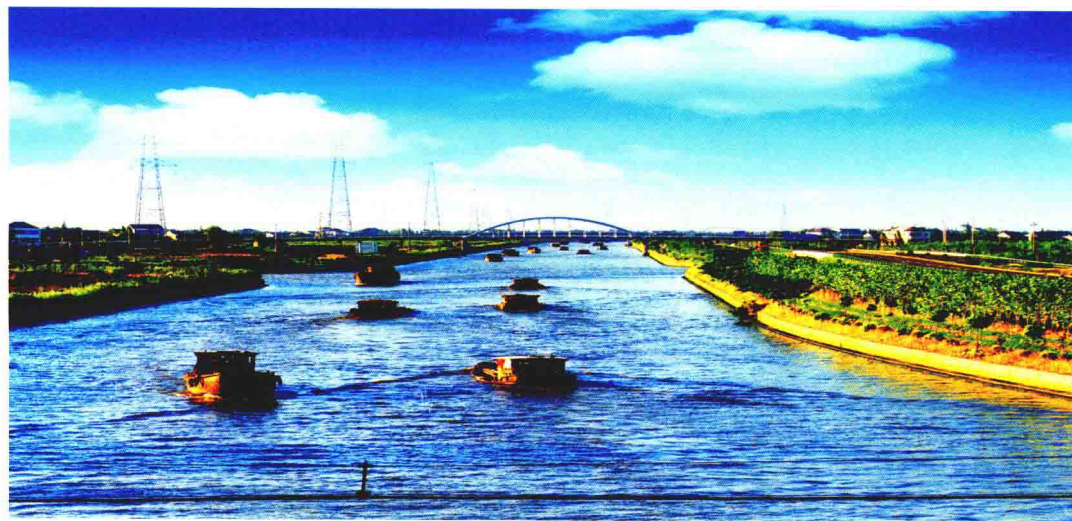
• Position and Environment •

■ 嘉兴秀洲地处沪、杭、苏中心地段，是浙江省接轨上海的前沿阵地，嘉兴市的一个新兴城区。以嘉兴为中心，250公里半径内涵盖了长三角16个大、中城市。具有独特的区位条件和资源优势。距上海、杭州、苏州均不超过90公里，充分接受着嘉兴乃至上海、苏州、杭州等长江三角洲大中城市资源、人才和技术的辐射。交通便捷：沪杭复线铁路、320国道、京杭大运河贯穿全境。高速公路密度全国最高：沪杭甬、乍嘉苏和待建的申嘉湖三条高速公路在秀洲区境内纵横相交，共设有5个互通立交出入口。距上海虹桥机场、上海浦东机场和杭州萧山机场均在100公里左右。海运及水路与上海港、嘉兴港和京杭大运河相联，并已开通嘉兴至上海港的集装箱内河支线。五个镇三个街道与嘉兴城市扇状形联成一体，并已构成20分钟交通圈。



● 乍嘉苏高速公路秀洲段气势如虹 the Magnificent Zhapu-Jiaxing-Suzhou Expressway, Xiuzhou Section

■ Situated in the hub of the major neighboring cities, namely Shanghai, Hangzhou and Suzhou, Xiuzhou District is the core of the three economic circles in Yangtze Delta. It is the frontline to link Zhejiang Province with Shanghai Metropolis and also a newly booming up area of Jiaxing City. Putting Jiaxing as the central point of a circle with 250km radius, there are 16 large and medium-sized cities in Yangtze Delta endowing it with advantages in geographical position and natural resources. With a distance of less than 90 km from Shanghai, Hangzhou and Suzhou, Xiuzhou District can fully share the common resources presented by its neighboring cities such as talented people, technology and natural resources. With Shanghai-Hangzhou double-track railway, 320 National Highway and Beijing-Hangzhou Grand Canal all running through this area, Xiuzhou District enjoys convenient and fast traffic. Also the number of expressways in this area tops first nationwide. Shanghai-Hangzhou Expressway, Zhapu-Jiaxing-Suzhou Expressway and the planned Shanghai-Jiaxing-Huzhou Expressway go crisscrossing in Xiuzhou District with five entries and exits. It is about 100 km away from Shanghai Hongqiao Airport, Shanghai Pudong International Airport and Hangzhou Xiaoshan Airport. Inland waterways connect the district with Shanghai Port, Jiaxing Port and Beijing-Hangzhou Grand Canal. The sub inland waterway to carry containers from Jiaxing to Shanghai Port has been put into use. All its five towns and three communities are included into a fan-shaped traffic network linking it to the downtown area within 20 minute driveway.



● 美丽的北郊河与古运河相连

The elegant Beijiao River is connected with the ancient Beijing-Hangzhou Grand Canal.



● 流光溢彩的高速公路过境站 the Handsome Passing Gate of Expressways

人文历史

● Culture and history ●

■ 秀洲区历史悠久，古迹众多，人杰地灵。据史载：后晋天福五年（940），吴越时期嘉禾地区均“秀州”。文化积淀深厚，属于新石器时代中期文化遗址的马家浜文化，距今已有7000余年的历史。历代名人辈出，如大画家吴镇、蒲华，诗人朱彝尊、徐志摩，学者王国维，文学家茅盾、丰子恺，翻译家朱生豪，近代出版事业的开拓者张元济及爱国者高僧弘一法师（李叔同）等。此外，还有不少优秀的科学家，如数学家陈省身教授、国家环保学家沈铎博士及华裔新兴“电子王”邱开甲等都曾生活在这块土地上。

■ Xiuzhou District has a long history and rich cultural heritage. According to historic records, Xiuzhou District belongs to Majiabang Civilization of the middle Neolithic period dating back to over 7,000 years ago. Over the history, numerous famous figures were born in Xiuzhou District, such as great painter Wu Zhen and Pu Hua; poet Zhu Yizhun and Xu Zhimo; scholar Wang Guowei; writer Mao Dun and Feng Zikai; Translator Zhu Shenghao; pioneer of modern publishing industry, Zhang Yuanji and Master Hongyi and a number of outstanding scientists like mathematician, Professor Chen Xingsheng; expert in environment protection, Dr. Shen Duo and King of new electronics, Qiu Kaijia.



● 南湖红船 Red Boat in Nanhu Lake



扁平穿孔石斧
Stone Axe with Holes



人首陶瓶
Pottery Bottle in the Shape of Man's Head

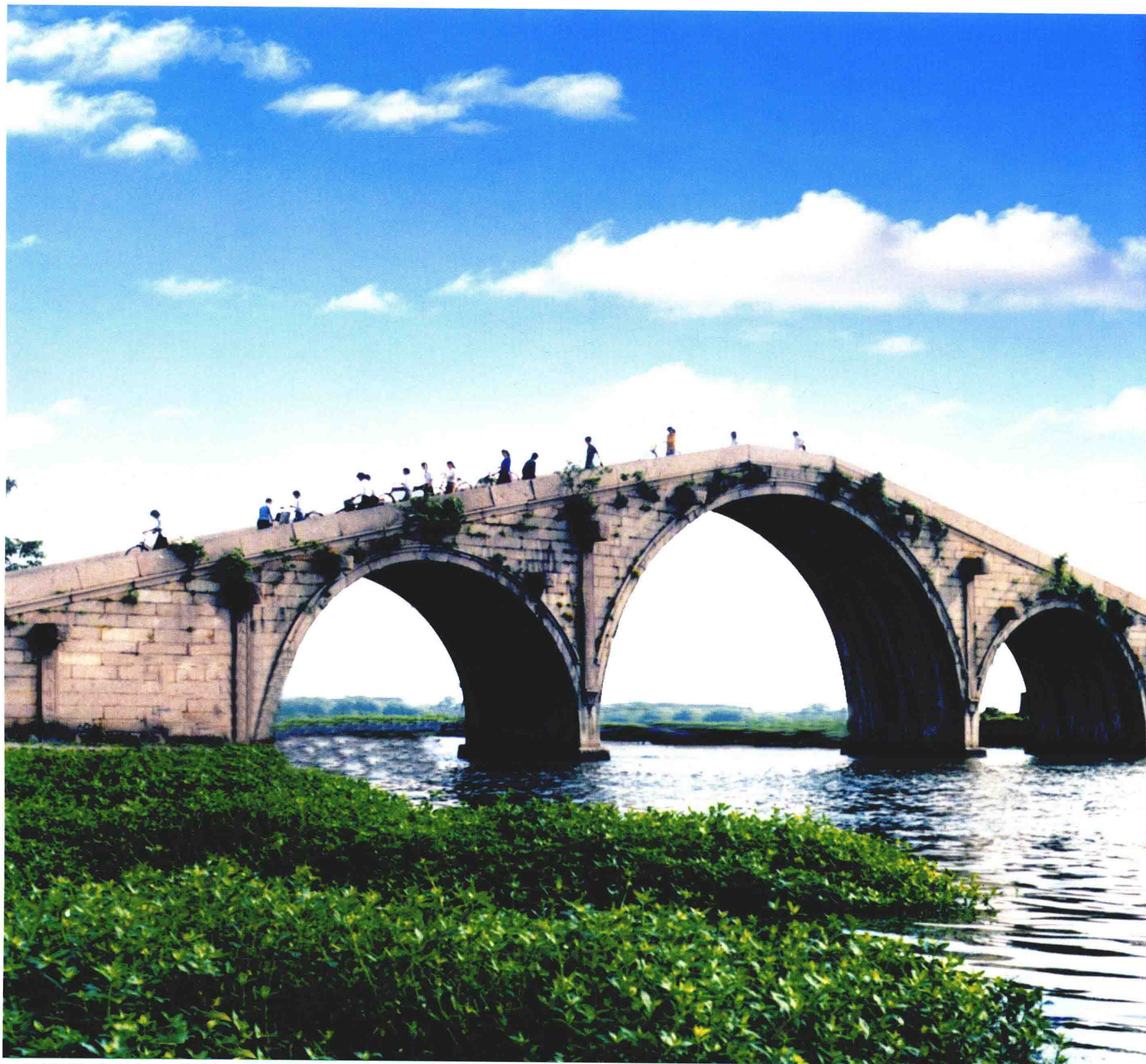


陶器
Pottery



腰沿釜
Kidney-Shaped Axe

- 秀洲出土的部分新石器文化遗物
Cultural Relics of the Neolithic Period
Unearthed in Xiuzhou District



- 建于明朝万历年间、横越古运河的长虹桥壮观别致，是我国古代石拱桥的杰作
Changhong Bridge, elegantly crossing over the ancient Grand Canal, was built in the Ming Dynasty and is claimed as a masterpiece of ancient arch stone bridges in China.



- ① 座落在秀洲区王店镇梅里会的曝书亭，是嘉兴五大文人故居之一，为清初著名学者、文学家朱彝尊的故居。
Baoshu Pavilion, situated in Wangdian Town of Xiuzhou District, is the former residence of Zhu Yizhun, a famous scholar and litterateur of Qing Dynasty, and one of the five former residences of famous scholars in Jiaxing.
- ② 范蠡、西施归隐处—范蠡湖，是嘉兴的名胜之一。
Fanlihu Lake, where General Fanli and Beauty Xishi lived in seclusion, is a famous scenic spot in Jiaxing.
- ③ 建于明青年间的新塍小蓬莱极具江南水乡风情
Lesser Penglai Park in Xincheng Town was built in Ming Dynasty and is typically charm for the southern China water region flavor.
- ④ 千年古树堪称水乡一绝
the Incomparable One-Thousand-Year-Old Tree

