

山水卷

「第一辑」

中国画名家

张捷

画库

Collected Artworks of Famous Chinese Painters



四川出版集团 四川美术出版社



张 捷

1963 年生于浙江台州

先后毕业于中国美术学院国画系本科和研究生班
现为 中国美术学院中国画系教授、博士研究生

ZHANG Jie

ZHANG Jie, born in Taizhou city in Zhejiang province in 1963, was graduated from the department of traditional Chinese Painting in Chinese Academy of Fine Arts, and obtained his bachelor and master degree. He is now a professor and a doctor student of the department of traditional Chinese Painting in Chinese Academy of Fine Arts.

笔墨不仅仅是单纯的形式，它同样容纳了内容和作品思想，是自我精神状态的外化（或迹化），是主观意象观念的再现，于是有线的飞沉涩放，墨的枯湿浓淡，皴的纵横擦拭，笔墨之间无不蕴含着丰富的内在精神。

张
捷



《美术观点》素来以“直面美术，阐述观点”为编辑主旨，在重视美术学术建设、艺术实践理解和媒体品牌构建的同时，也注重对艺术家在艺术创作过程中的理性思考及其作品所传达的观点的研究与传播，形成了作者、编者与读者三者之间的良好互动关系，在中国美术界产生了积极影响。

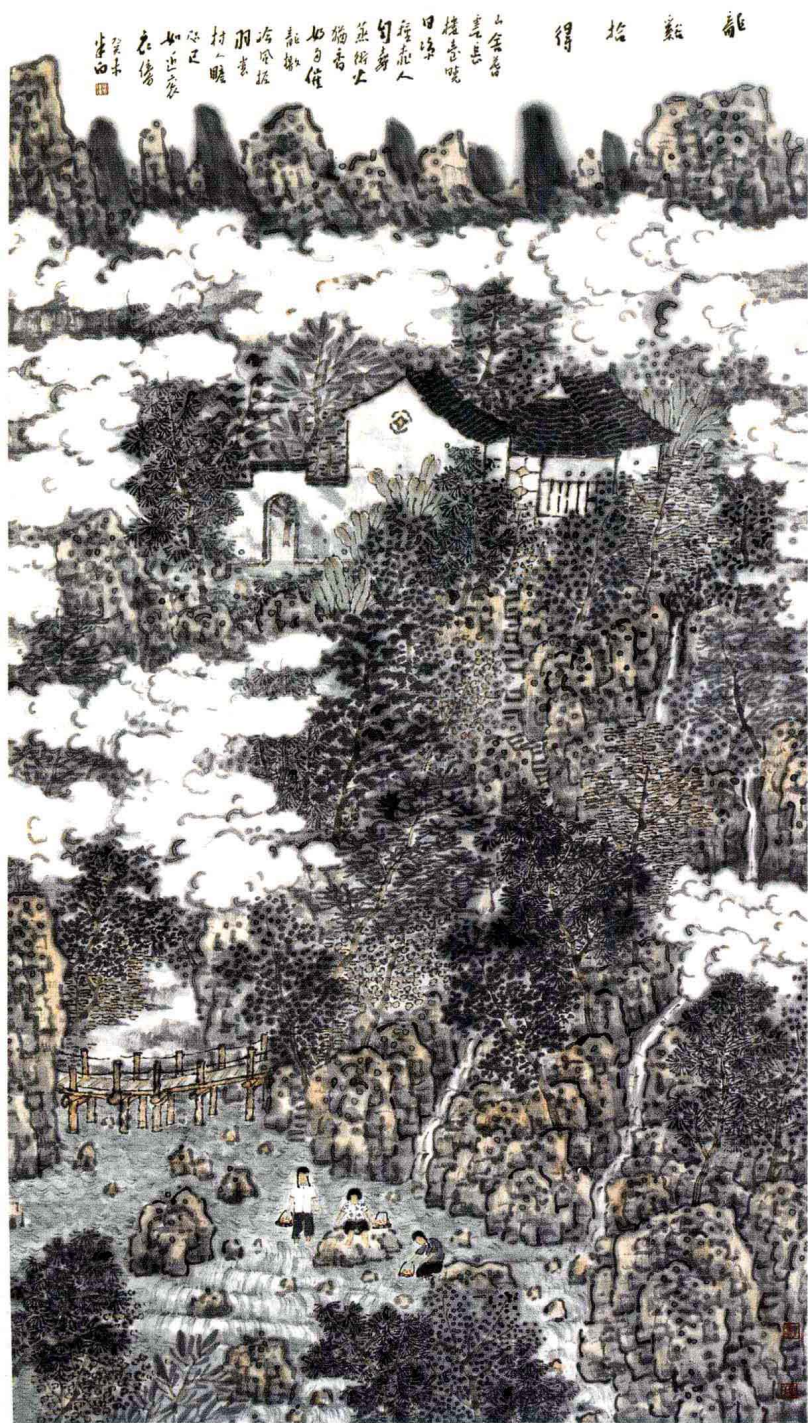
《中国画名家画库》系列丛书的出版，旨在弘扬中华民族优秀文化，展现当代中国画界具有学术探索精神的老中青艺术家的艺术成就，并对他们的学术观点和艺术成果按画科（人物、山水、花鸟）分辑，个案成册，以便广大艺术家、读者之间学习交流、研究借鉴。

编者
2006年3月

Art Viewpoint takes "Direct dialogue between artists and audience" as its guiding editorial principle. The journal emphasizes simultaneous development of the study of fine arts, theory and practice in art, and the quality of multimedia. It also emphasizes research and explication of the creative process of artists and the meaning of what they want to express in their work. The aim of the journal is to improve the mutual understanding and relationship among authors, editors, and readers. It has had a major impact on the art world in China.

The publication of the book series, *Collected Artworks of Famous Chinese Painters*, showcases the excellence of Chinese culture and exhibits the achievements of various generations of contemporary Chinese painters. As a research reference, the series examines the work and perspectives of each artist according to different genres of painting to foster communication and understanding between artists and their audience.

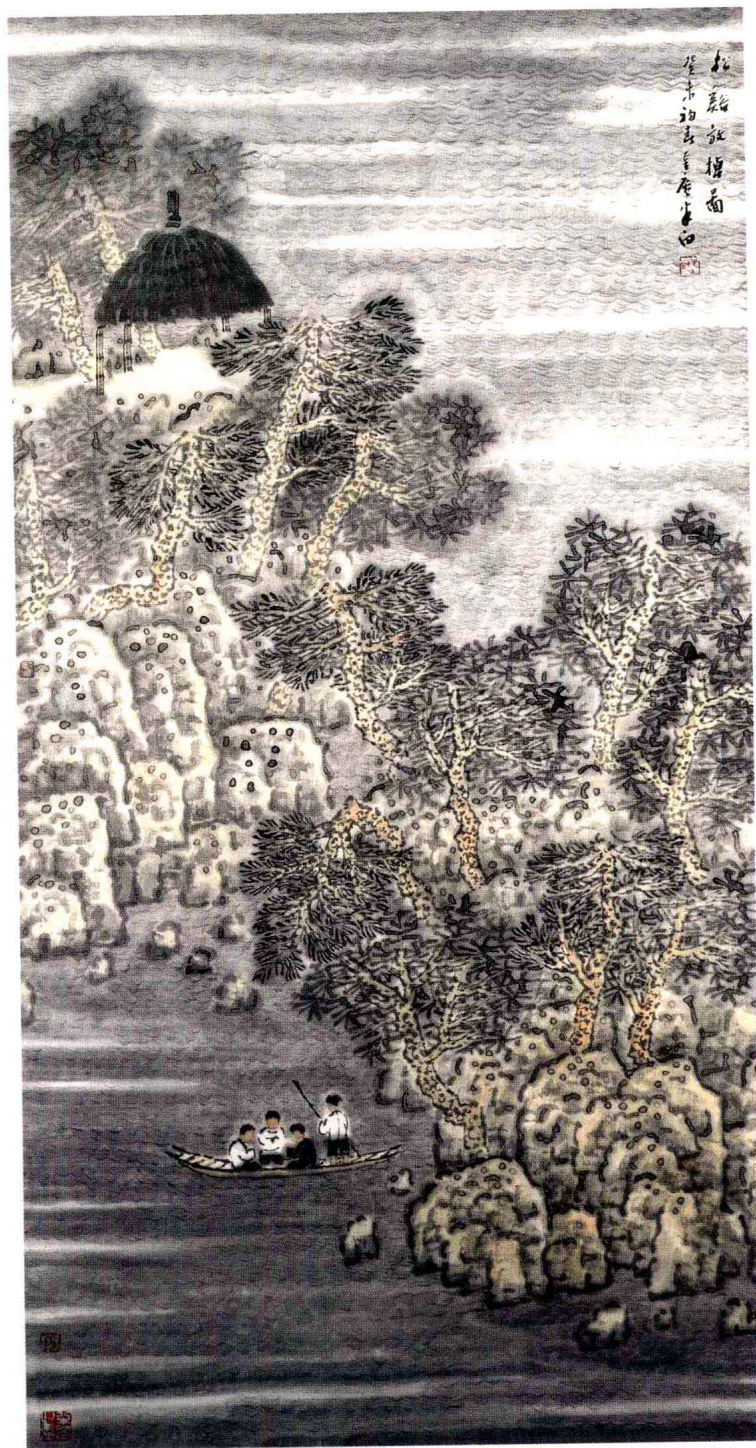
Editor
March, 2006



龙溪拾得 纸本设色 180cm × 98cm 2003



东田秋兴 纸本设色 136cm × 68cm 2003



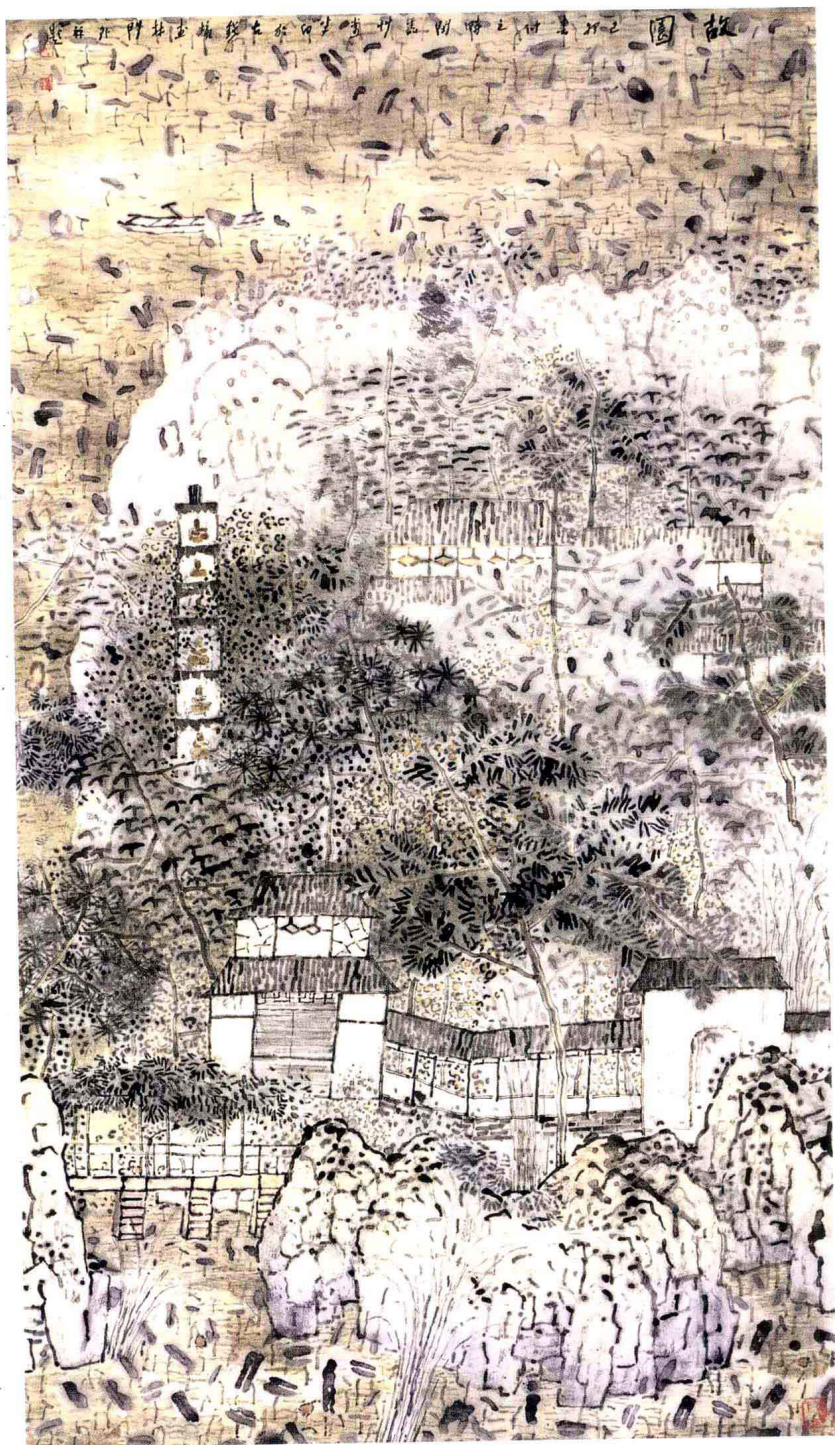
松溪放棹 纸本设色 136cm × 68cm 2003



云和农舍 纸本设色 220cm × 124cm 2001



闻鸪放犊 纸本设色 180cm × 98cm 2003



故园 纸本设色 221cm × 124cm 1999

