

钢琴家之旅丛书



什密特 钢琴五指练习曲

作品 16

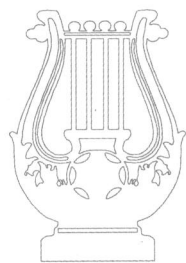


湖南文艺出版社

钢琴家之旅丛书

什密特 钢琴五指练习曲

作品 16



湖南文艺出版社

图书在版编目 (CIP) 数据

什密特钢琴五指练习曲: 作品 16: 大开有声版/ (德)

什密特作曲. —长沙: 湖南文艺出版社, 2006.3

(钢琴家之旅丛书)

ISBN 7-5404-3707-3

I.什... II.什... III.钢琴—练习曲—德国—选集 IV.J657.411

中国版本图书馆 CIP 数据核字(2006)第 017978 号

钢琴家之旅丛书(大开有声版)

什密特

钢琴五指练习曲

作品 16

(德)什密特 作曲

责任编辑: 孙 佳 熊宇亮

*

湖南文艺出版社出版、发行

(长沙市雨花区东二环一段 508 号 邮编: 410014)

网址: www.musiced.com.cn

湖南省新华书店经销 湖南广播电视大学印刷厂印刷

*

2006 年 4 月第 1 版第 1 次印刷

开本: 970×640 1/8 印张: 4

ISBN7-5404-3707-3

J·1098 定价: 14.00 元(含 CD)

若有质量问题, 请直接与本社出版科联系调换。

目 录

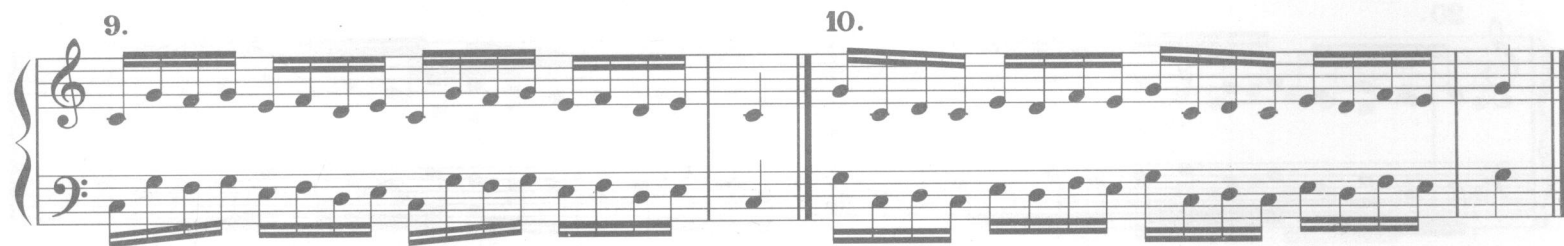
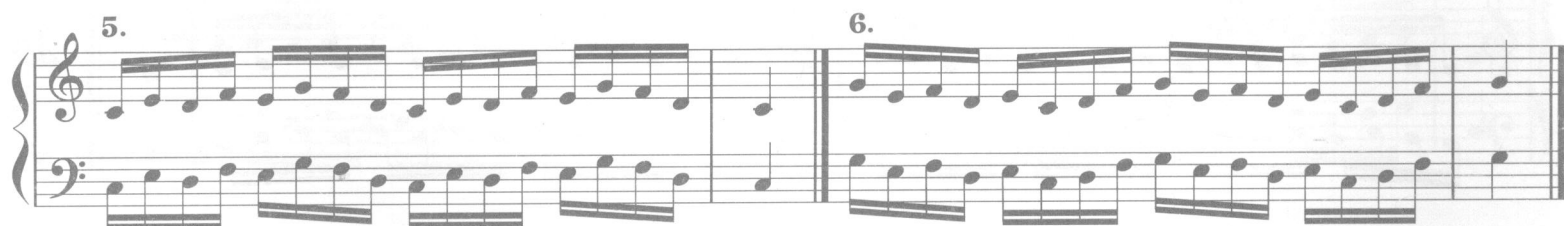
| | |
|----------------------|----|
| 手指独立不倚和动作均衡的练习 | 1 |
| 拇指从他指下经过的练习 | 15 |
| 附录 | 18 |

钢琴五指练习曲

什密特

手指独立不倚和动作均衡的练习

每条练习弹十次以上。先分手练习，然后两手再合起来。两手弹奏时要平稳、安静。开始时要弹得很慢，然后逐渐加快。每条练习要用不同的调弹奏，指法不变。



11. 12.

13. 14.

15. 16.

17.

18.

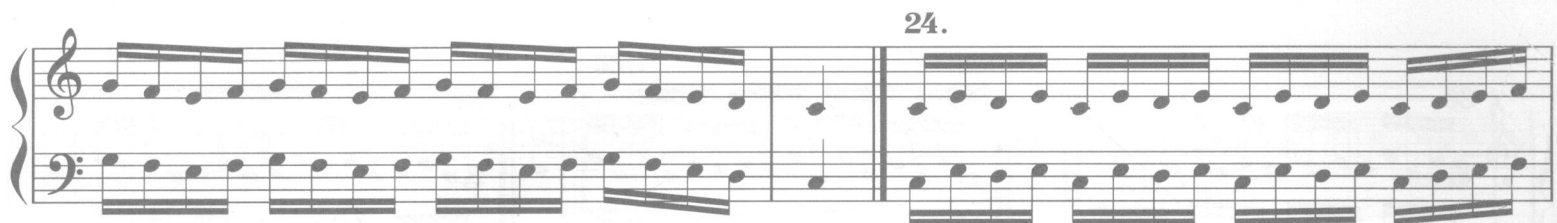
19.

20. 21.

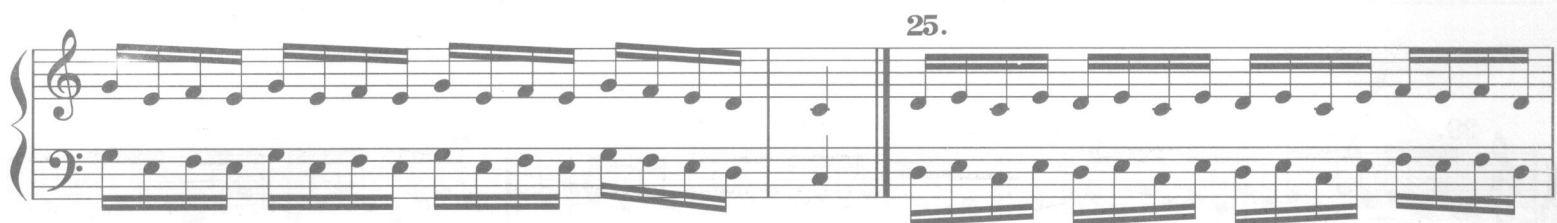
22. 23.



24.



25.



26.



27. 28.



29. 30.



31. 32.



33. 34. 35.

Measures 33, 34, and 35. Each measure consists of a treble and bass staff. Measure 33 shows a steady eighth-note pattern in both hands. Measure 34 features a treble staff with eighth notes and a bass staff with a similar eighth-note pattern. Measure 35 continues with eighth-note patterns in both staves.

36. 37. 38.

Measures 36, 37, and 38. Measure 36 has eighth-note patterns in both staves. Measure 37 shows a treble staff with eighth notes and a bass staff with eighth notes. Measure 38 continues with eighth-note patterns in both staves.

39. 40. 41.

Measures 39, 40, and 41. Measure 39 has eighth-note patterns in both staves. Measure 40 shows a treble staff with eighth notes and a bass staff with eighth notes. Measure 41 continues with eighth-note patterns in both staves.

42. 43. 44.

Measures 42, 43, and 44. Measure 42 has eighth-note patterns in both staves. Measure 43 shows a treble staff with eighth notes and a bass staff with eighth notes. Measure 44 continues with eighth-note patterns in both staves.

45. 46. 47.

Measures 45, 46, and 47. Measure 45 has eighth-note patterns in both staves. Measure 46 shows a treble staff with eighth notes and a bass staff with eighth notes. Measure 47 continues with eighth-note patterns in both staves.

48. 49. 50.

Measures 48, 49, and 50. Measure 48 has eighth-note patterns in both staves. Measure 49 shows a treble staff with eighth notes and a bass staff with eighth notes. Measure 50 continues with eighth-note patterns in both staves.

51. 52. 53.

Musical notation for measures 51, 52, and 53. Each measure is shown in a grand staff with a treble and bass clef. Measure 51 features a steady eighth-note pattern in both hands. Measure 52 shows a similar pattern with some rests. Measure 53 continues the eighth-note texture.

54. 55. 56.

Musical notation for measures 54, 55, and 56. Measure 54 has a consistent eighth-note accompaniment. Measure 55 introduces a more complex melodic line in the treble. Measure 56 features a melodic phrase in the treble over a steady bass accompaniment.

57. 58. 59.

Musical notation for measures 57, 58, and 59. Measure 57 shows a dense eighth-note texture. Measure 58 has a similar texture with some melodic variation. Measure 59 continues with a steady eighth-note accompaniment.

60. 61. 62.

Musical notation for measures 60, 61, and 62. Measure 60 features a consistent eighth-note accompaniment. Measure 61 shows a melodic line in the treble. Measure 62 continues with a steady eighth-note accompaniment.

63. 64. 65.

Musical notation for measures 63, 64, and 65. Measure 63 has a dense eighth-note texture. Measure 64 shows a melodic line in the treble. Measure 65 continues with a steady eighth-note accompaniment.

66. 67. 68.

Musical notation for measures 66, 67, and 68. Measure 66 features a consistent eighth-note accompaniment. Measure 67 shows a melodic line in the treble. Measure 68 continues with a steady eighth-note accompaniment.

69. 70. 71.

Measures 69, 70, and 71. Each measure consists of a treble and bass staff. The treble staff features a continuous eighth-note pattern, while the bass staff provides a steady accompaniment of eighth notes.

72. 73. 74.

Measures 72, 73, and 74. Similar to the previous section, these measures feature eighth-note patterns in both the treble and bass staves.

75. 76. 77.

Measures 75, 76, and 77. The eighth-note patterns continue in both staves, maintaining a consistent rhythmic texture.

78. 79. 80.

Measures 78, 79, and 80. The notation shows a continuation of the eighth-note accompaniment in both hands.

81. 82. 83.

Measures 81, 82, and 83. The eighth-note patterns are maintained throughout these measures.

84. 85. 86.

Measures 84, 85, and 86. The final section of the page, showing the continuation of the eighth-note accompaniment in both staves.

87. 88. 89.



Measures 87, 88, and 89. Each measure consists of a treble and bass staff. The music features a continuous eighth-note pattern in both hands, with a steady bass line.

90. 91. 92.



Measures 90, 91, and 92. The musical notation continues with eighth-note patterns in both hands.

93. 94. 95.



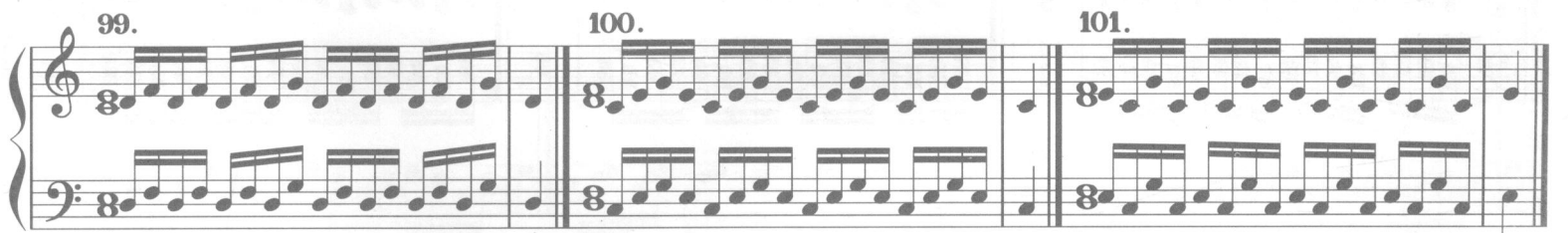
Measures 93, 94, and 95. The notation remains consistent with the previous measures.

96. 97. 98.




Measures 96, 97, and 98. The notation continues with eighth-note patterns.

99. 100. 101.



Measures 99, 100, and 101. The notation continues with eighth-note patterns.

102. 103. 104.



Measures 102, 103, and 104. The notation continues with eighth-note patterns.

105. 106. 107.

108. 109. 110.

111.* 112. 113. 114.

115. 116. 117. 118.

119. 120. 121.

122. 123. 124.

*111至127也可弹成断奏： 等。

125. 126. 127.

This block contains measures 125, 126, and 127. Each measure is a two-measure unit. The right hand (treble clef) features a continuous eighth-note pattern, while the left hand (bass clef) plays a steady eighth-note accompaniment.

128. 129. 130.

This block contains measures 128, 129, and 130. Measures 128 and 129 are two-measure units with eighth-note patterns in both hands. Measure 130 is a two-measure unit where the right hand has a more complex eighth-note pattern and the left hand has a simpler accompaniment.

131. 132. 133.

This block contains measures 131, 132, and 133. Measures 131 and 132 are two-measure units with eighth-note patterns in both hands. Measure 133 is a two-measure unit with a more complex eighth-note pattern in the right hand.

134. 135. 136.

This block contains measures 134, 135, and 136. Measures 134 and 135 are two-measure units with eighth-note patterns in both hands. Measure 136 is a two-measure unit with a more complex eighth-note pattern in the right hand.

137. 138. 139.

This block contains measures 137, 138, and 139. Measures 137 and 138 are two-measure units with eighth-note patterns in both hands. Measure 139 is a two-measure unit with a more complex eighth-note pattern in the right hand.

140. 141. 142.

This block contains measures 140, 141, and 142. Measures 140 and 141 are two-measure units with eighth-note patterns in both hands. Measure 142 is a two-measure unit with a more complex eighth-note pattern in the right hand.

143. 144. 145.

146. 147. 148.

149. 150. 151.

152. 153. 154.

155. 156. 157.

158. 159. 160.*

* 160至169也可弹成断奏： 等。

161. 162. 163.

164. 165. 166.

167. 168. 169.

下列各条须上行、下行练习，扩展到键盘的全部音域。

170.

171.

172. 173. 174.

Exercise 172: Treble clef starts with 1 2 3 4 5 4 3 2; Bass clef starts with 5 4 3 2 1 2 3 4. Exercise 173: Treble clef starts with 5 4 3 2 1 2 3 4; Bass clef starts with 1 2 3 4 5 4 3 2. Exercise 174: Treble clef starts with 1 2 3 4 5 4 3 2; Bass clef starts with 5 4 3 2 1 2 3 4.

175. 176. 177.

Exercise 175: Treble clef starts with 5 4 3 2 1; Bass clef starts with 1 2 3 4 5. Exercise 176: Treble clef starts with 1 4 5; Bass clef starts with 5 2 1. Exercise 177: Treble clef starts with 5 4 3 2 1 2 3 4; Bass clef starts with 1 2 3 4 5 4 3 2.

178. 179. 180.

Exercise 178: Treble clef starts with 1 2 3 4 5 4 3 2; Bass clef starts with 5 4 3 2 1 2 3 4. Exercise 179: Treble clef starts with 5 4 3 2 1 2 3 4; Bass clef starts with 1 2 3 4 5 4 3 2. Exercise 180: Treble clef starts with 5 4 3 2 1 2 3; Bass clef starts with 1 2 3 4 5 4 3 2.

181. 182. 183.

Exercise 181: Treble clef starts with 1 2 3 4 5 4 3 2; Bass clef starts with 5 4 3 2 1 2 3 4. Exercise 182: Treble clef starts with 1 2 3 4 5 4 3 2; Bass clef starts with 5 4 3 2 1 2 3 4. Exercise 183: Treble clef starts with 5 4 3 2 1 2 3 4; Bass clef starts with 1 2 3 4 5 4 3 2.

184. 185. 186.

Exercise 184: Treble clef starts with 5 4 3 2 1 2 3 4; Bass clef starts with 1 2 3 4 5 4 3 2. Exercise 185: Treble clef starts with 3 5 4 3 2 1 2 3 4; Bass clef starts with 3 1 2 3 1 2 4. Exercise 186: Treble clef starts with 1 4 2 5 3 2 4 3; Bass clef starts with 5 2 4 1 3 4 2 3.

187. 188. 189.

Exercise 187: Treble clef starts with 5 2 4 1 3 2 4 3; Bass clef starts with 1 4 2 5 3 4 2 3. Exercise 188: Treble clef starts with 1 5 4 5 3 4 2 3; Bass clef starts with 5 1 2 1 3 2 4 3. Exercise 189: Treble clef starts with 5 1 2 1 3 2 4 3; Bass clef starts with 1 5 4 5 3 4 2 3.

190. 191. 192.

Exercise 190: Treble clef starts with 5 1 2 1 3 2 4 3; Bass clef starts with 1 5 4 5 3 4 2 3. Exercise 191: Treble clef starts with 1 5 4 5 3 4 2 3; Bass clef starts with 5 1 2 1 3 2 4 3. Exercise 192: Treble clef starts with 1 5 3 2 3 5 4 2; Bass clef starts with 1 3 4 3 1 2 4.

193. 194. 195.

Exercise 193: Treble clef starts with 5 1 3 4 3 1 2 4; Bass clef starts with 1 5 3 2 3 5 4 2. Exercise 194: Treble clef starts with 5 3 4 5 3 2 4; Bass clef starts with 1 3 2 1 3 4 2. Exercise 195: Treble clef starts with 1 3 4 5 3 2 4; Bass clef starts with 5 3 2 1 3 4 2.

196. 197. 198.

Exercise 196: Treble clef starts with 3 1 4 2 5 3 2 4; Bass clef starts with 3 5 2 4 1 3 4 2. Exercise 197: Treble clef starts with 3 5 2 4 1 3 4 2; Bass clef starts with 3 1 4 2 5 3 2 4. Exercise 198: Treble clef starts with 3 5 2 4 3 1 2 4; Bass clef starts with 3 1 4 2 3 5 4 2.

199. 200. 201.

Exercise 199: Treble clef starts with 5 3 4 2 3 3 1; Bass clef starts with 1 3 2 4 3 1 3 5. Exercise 200: Treble clef starts with 1 3 4 2 5 3 2 4; Bass clef starts with 5 3 2 4 1 3 4 2. Exercise 201: Treble clef starts with 5 3 2 4 1 3 4 2; Bass clef starts with 1 3 4 2 5 3 2 4.

202. 203. 204.

Exercise 202: Treble clef starts with 5 3 2 4 1 3 4 2; Bass clef starts with 1 3 4 2 5 3 2 4. Exercise 203: Treble clef starts with 1 3 4 2 5 3 4 2; Bass clef starts with 5 3 2 4 1 3 2 4. Exercise 204: Treble clef starts with 1 2 1 2 3 4; Bass clef starts with 5 4.

205.

Exercise 205: Treble clef starts with 5 4 5 4 1 2; Bass clef starts with 1 2 5 4.