

INVEST HUIAN



惠安 Hui'an

海峡西岸投资热土

A Hot Investment Destination on the Western Coast of Taiwan Strait

惠安县人民政府

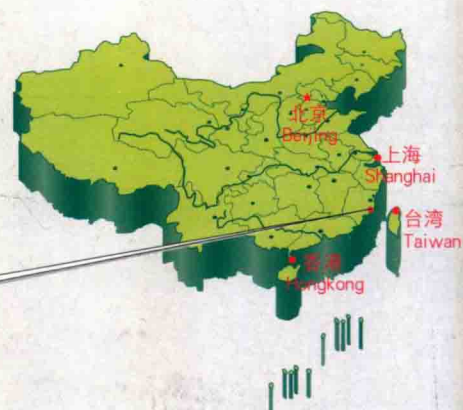
The People's Government of Hui'an County

惠安，福建东南沿海的一方风水宝地

Hui'an, a Blessed Land on the Southeastern Coast of Fujian Province

惠安是著名侨乡和台湾汉族同胞主要祖籍地，为国务院首批批准的对外开放县之一，是福建省最早的台轮停泊点和对外贸易点。全县土地面积720平方公里，总人口92万人，2004年全县GDP193亿。素以“石雕之乡”、“建筑之乡”、“渔业之乡”闻名遐迩。多年来，惠安人坚持走以市场经济为导向，以地方特色工业为重点，以民营经济为特征的外向型经济发展道路，把惠安建设成为经济综合实力全国百强县和福建省十强县。今天，惠安人正以新的姿态，着力构建海峡西岸滨海工贸旅游城市，全县规划5大工业片区，面积58平方公里，以更高的标准进行产业规划和整合，吸引了众多客商前来落户。惠安，正成为海峡西岸引人瞩目的投资热土。

Hui'an, a leading ancestral home of overseas Chinese and Taiwanese compatriots of the Han ethnicity, is one of the first counties approved by the State Council for opening to the outside world and Fujian Province's first anchorage for Taiwanese vessels and Taiwan-oriented trade area. Covering a land area of 720 square kilometers with a population of 920,000, Hui'an is nicknamed the "capital of stone sculptures", "capital of construction" and "capital of fishery", her fame spreading far and wide. In recent years, Hui'an people have embarked on a path of export-oriented economic development with the market economy as the orientation, the local specialty industries as the focal point, and the private economy as the feature, striving to build Hui'an into one of China's top 100 counties and Fujian's top 10 counties in terms of comprehensive economic strength. Today, Hui'an people are marking renewed efforts to build a county of industry, trade and tourism on the western coast of Taiwan Strait, and are applying higher standards in performing industry planning and consolidation of the city's five major industrial blocks, which have a combined area of 58 square kilometers. All these efforts are intended to attract a greater number of businesspeople to launch operations here. Hui'an is poised to become a hot investment destination on the western coast of Taiwan Strait, attracting increasingly greater attention.





惠安位于福建省东南沿海泉州湾北岸，东临台湾海峡，与台湾一衣带水，隔海相望，距台中梧栖港仅97海里。西连泉州市区，是泉州海湾城市东拓的重要腹地。141公里漫长的海岸线为惠安工业、旅游业发展提供了不可多得的宝贵资源，拥有斗尾港、秀涂港、崇武港三大天然良港，凭借得天独厚的地理区位优势，惠安经济快速发展，成为闪烁在海峡西岸经济区的耀眼明珠。

- 交通：**
- 航空** 距泉州机场30公里，厦门、福州国际机场100余公里
 - 港口** 距泉州后渚港10公里、肖厝港20公里，厦门、福州港100余公里
 - 公路** 324国道、福厦高速公路、泉州沿海大通道与境内的省道、县道一起构成纵横交错、四通八达的交通网络。
 - 铁路** 境内有一个火车站，距泉州火车站20公里，距厦门、福州火车站100余公里。
- 此外，境内的水、电、通讯均适度超前建设，完全满足投资需要。

Hui'an is located on the northern side of Quanzhou Bay on the southwestern coast of Fujian Province, bordering Taiwan Strait to the east and facing Taiwan across a narrow strip of water at merely 97 kilometers from Wuchi Port in Taichung. Adjoining Quzhou downtown area to the west, Hui'an is a major hinterland for the eastward expansion of Quanzhou as a bay city. Its 141km extended coastline provides valuable resources for the development of industry and tourism in Hui'an. Its three sheltered natural ports, named Douwei Port, Xiutu Port and Chongwu Port, are playing a significant role in the development of the local economy. With its unique geographic conditions, Hui'an enjoys a rapidly growing economy and is becoming a brighter gem on the crown of the Economic Zone on the Western Coast of Taiwan Strait.

Transportation:

- Air** 30km from Quanzhou Airport and 100-plus km from Xiamen and Fuzhou airports
- Port** 10km from Quanzhou Houzhu Port, 20km from Xiaocuo Port and over 100km from Xiamen & Fuzhou Port.

Highway a crisscrossing transportation network comprising the National Highway 324, Fuzhou-Xiamen Expressway, Quanzhou Coastal Thoroughfare and provincial highways and county highways makes the Hui'an an easily accessible place.

Railway Hui'an is home to a railway station, which is about 20km from Quanzhou Railway Station and 100-plus km from Xiamen and Quanzhou railway stations.

Additionally, water, electricity and telecommunication systems in Hui'an have been developed modestly ahead of actual needs and therefore are completely adequate for investment needs.

惠 安 经 济 开 发 区

Hui'an Economic Development Zone

『 闪烁在惠安大地上的 **5** 颗璀璨明珠 』
『 Five Bright Germs on the Crown of Hui'an 』



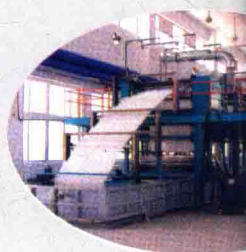
惠 南
Hui Nan



城 南
Cheng Nan



惠 东
Hui Dong



泉 惠 石
Quan Hui Shi



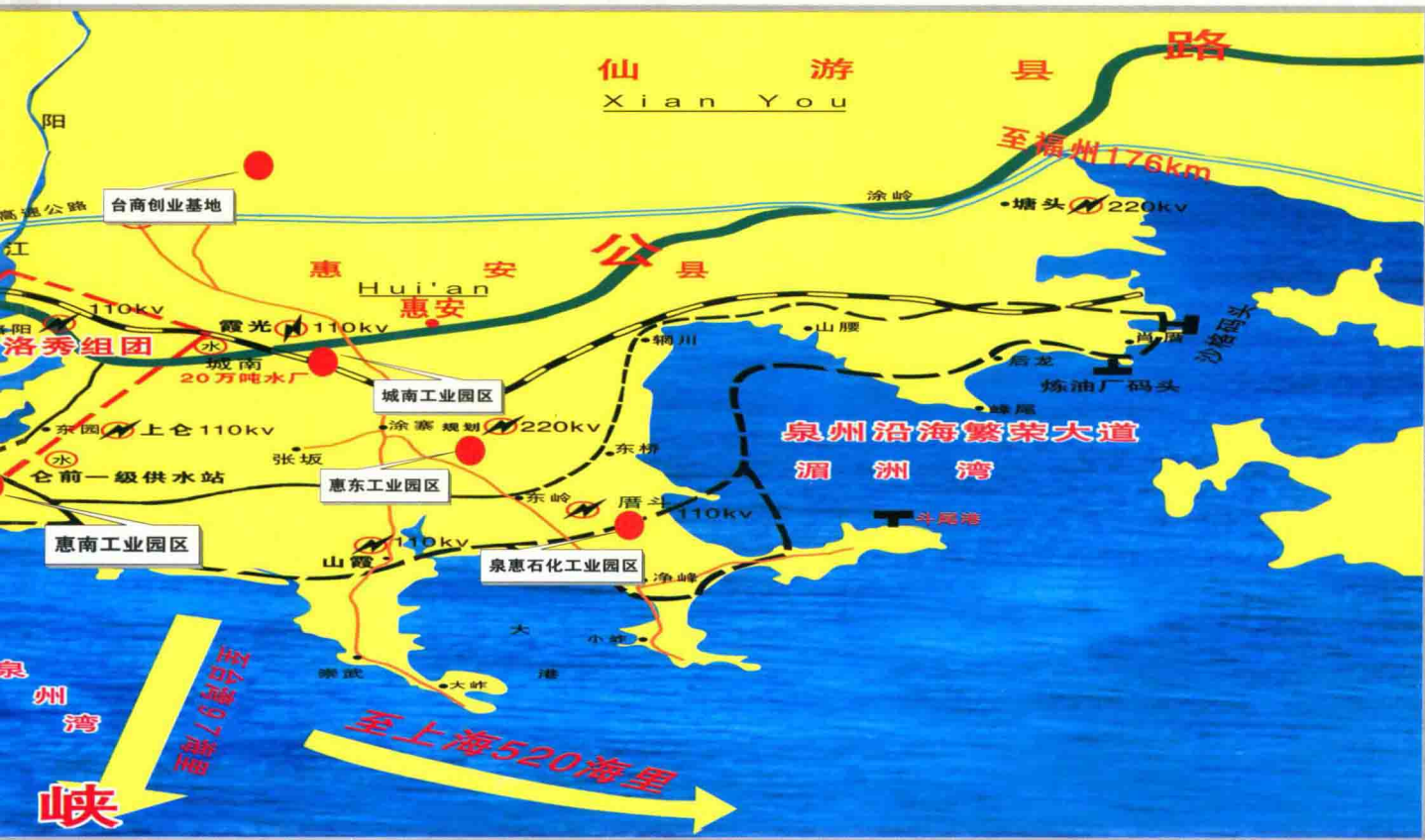
惠安经济开发区由惠南、城南、惠东、泉惠石化、台商创业基地五大园区组成，它们以城市、港口、交通要道为依托，区位优势明显，对外交通便捷，规划布局合理，利用各自资源，集聚不同产业，成为项目投资的载体和惠安经济增长的五个强大支撑点。

Hui'an Economic Development Zone, consisting of five major industrial parks of Hui'an, Chengnan, Huidong, Quanhui Petrochemical and Taiwanese Entrepreneurial Base, is supported by advanced urban, port and transportation facilities, enjoying remarkable geographic advantages, convenient outward transportation and sound zoning and layout. The five industrial parks are taking advantage of their respective resources and functioning as meeting places of wide-ranging industries. They are poised to become the vehicle of project investments and five strong supporting points for the growth of Hui'an economy.



台商创业基地

Entrepreneurial Base For Taiwanese Business



惠安·惠南·工业新城

Hui'an Huinan New Industrial City

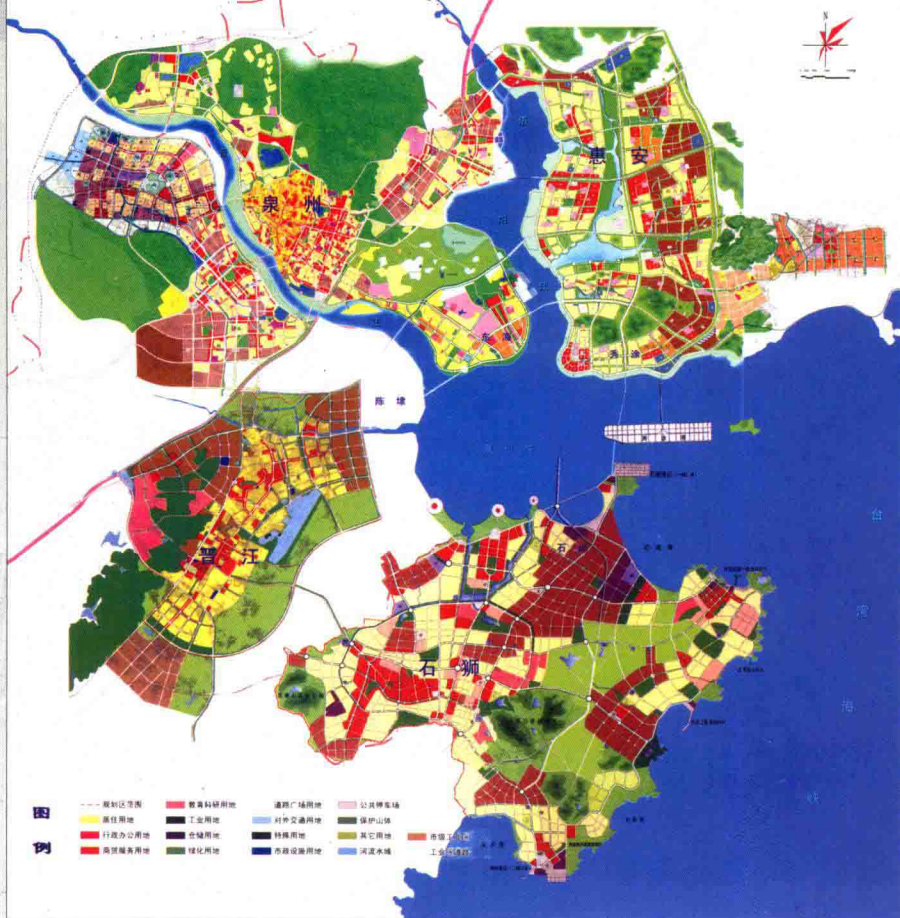
泉州正在倾力打造海峡西岸经济文化名城，建设环泉州湾滨海工贸港口城市，城市东进首推洛秀。惠南工业园区地处泉州湾北岸泉州市洛秀组团东南部，南临大海，北靠青山，东临天然旅游度假区青山湾、崇武港，西连泉州中心市区，周边有斗尾、秀涂、后渚三大港口码头。是泉州市最具潜力的新兴产业基地，也是正在申报中的台商投资区的重要组成部分。

Quanzhou is currently striving to build itself into a famed cultural city on the western coast of Taiwan Strait and to build a harbor city of coastal, industry and trade on the rim of Quanzhou Bay; its eastern expansion is spearheaded by Luoxiu. Huinan Industrial Park is located in the southeastern part of Luoxiu area in Quanzhou City on the northern coast of Quanzhou Bay, facing the sea to the south, lying at the foot of green mountains to the north, bordering Qingshan Bay, which is a natural tourist resort, and adjoining the central urban district of Quanzhou, with the three major ports of Douwei, Xiutu and Houzhu in close vicinity. Huinan Industrial Park is an emerging industry base with the greatest growth potential and an integral part of the Taiwanese investment zone, which is now under application.

泉州湾滨海城市总体规划拼图

(2004—2020)

总体布局图



惠南工业园区是以工业开发为主导，集实业生产、服务和生活配套为一体的新兴工业城。总体规划面积20平方公里，已形成机械、电子、服装纺织、鞋及鞋材、工艺品等专业园。远期着重引进光电信息、精细化工、生物制药等技术含量较高的产业。

Hui'an Industrial Park is an emerging industrial city focused on industrial development and incorporating industrial production, service and supporting accommodation facilities. The park has become a specialized park with a planned area of 20 square kilometers, featuring machinery, electronics, apparel and textile, footwear and footwear materials, and artware. In the long term, the park will focus on the introduction of industries with a high technological content, such as photoelectric information, fine chemicals and biological pharmaceuticals.



惠安·惠南·四期·五期产业园

Hui'an Huinan Phase 4th and Phase 5th Industrial Parks





(四期产业园)
(Phase 4th Industrial Park)

『新的规划、新的起点』 『New Planning, Fresh Starting Point』

四期产业园位于惠南园区东片区，规划面积2平方公里，着重发展精细化工及鞋业产业。

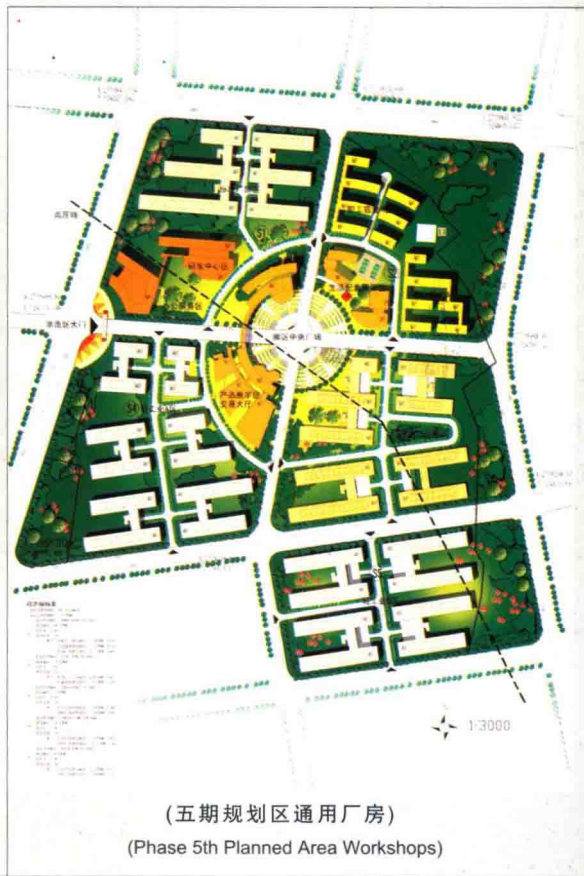
五期产业园位于惠南园区北片区，属申报中的泉州市台商投资区的起步区，规划面积2平方公里，建设大规模通用厂房对外招商，重点引进光电信息、生物制药产业。

新规划的产业园将云集高端企业、高端人才，成为配套最完善，规划最合理，产业链最完整，各生产要素最集聚的高标准工业园区。

The Phase 4th Industrial Park, located in the eastern part of Huinan Park with a planned area of two kilometers, is focused on the development of fine chemicals and footwear industries.

The Phase 5th Industrial Park, located in the northern part of Huinan Park, is the nascent area of Quanzhou Taiwanese Investment Zone, which is currently under application. With a planned area of two square kilometers, the park will build massive general-purpose workshops to provide premises for incoming enterprises and will introduce photoelectric information and biological pharmaceutical industries as a priority.

The newly planned industrial park will attract high-end enterprises and top-notch professionals and become a high-standard industrial park featuring the soundest planning, the most complete industry chain and the largest concentration of all production factors.



(五期规划区通用厂房)
(Phase 5th Planned Area Workshops)

惠安·惠南·城南·通用厂房

Hui'an Huinan and Chengnan General-purpose Workshops



通用厂房规划面积惠南园区1800亩、城南园区500亩，均位于园区中心地段，交通便捷，环境优美。建筑密度为30%，容积率1.5，绿化率30%。包括厂房、宿舍、办公综合楼、商贸及物流仓储配套。入驻通用厂房的企业将享受封闭式管理，所有审批手续都由园区无偿代办。

General-purpose workshops have a planned area of 120 hectares in Huinan Industrial Park and about 33.3 hectares in Chengnan Industrial Park. All these workshops are located in the central section of the park, featuring good accessibility and a beautiful environment. The workshops, which have a building density of 30%, a plot ratio of 1.5 and a green rate of 30%, comprise workshops, dormitories, office and integrated buildings, and commercial, trade, logistics and warehousing facilities. Enterprises based in the workshops will enjoy sealed-management, with all review and approval formalities to be completed by the park free of charge.

『招商中的通用厂房』

园区焦点上托出的精品力作』

『 The workshops currently soliciting business

The masterpieces on the premium land plots of the park 』



惠安·惠南·城南·通用厂房

Hui'an Huinan and Chengnan General-purpose Workshops

商住配套



首付 50%

余款可按揭

50% For First Payment and The Remaining
For Mortgage.

通用厂房



『 实现成长型企业

跨越式发展梦想的摇篮 』

『 The cradle for realizing the dream of
leap-forward development of growth enterprises 』

结构：全框架水泥混凝土结构(配电梯)

外墙：瓷砖或涂料

楼板：水磨楼地面

屋面：防水层加隔热层

门窗：铝合金

荷载：500kg/m²

长度：60米、90米、120米

宽度：18米、24米、30米

高度：底层5.5米、二层以上4.2米

Structure: Fully framed cement and concrete structure (elevators equipped)

External Walls: Tiled or painted

Floors: Terrazzo floors

Roofs: Waterproof layer plus heat insulation layer

Doors and Windows: Aluminum alloy

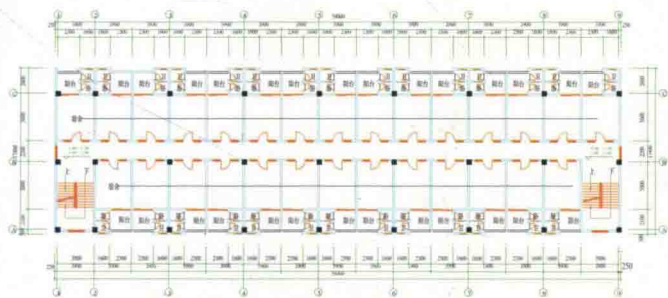
Load: 500kg/m²

Length: 60m, 90m and 120m

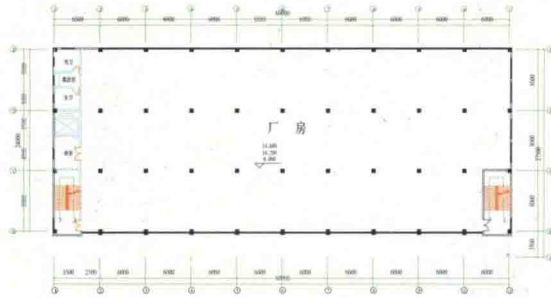
Width: 18m, 24m and 30m

Height: 5.5 for ground floors and 4.2 for 2nd floors and above

宿舍平面图



通用厂房平面图



惠安·惠南·园区剪影

Profile of Hui'an Huinan Industrial Park



● 园区基础设施剪影
Industrial Park Basical Facility



● 贵人鸟体育用品有限公司
GUIRENNIAO Sports Co.,Ltd



● 建德机械有限公司
KEN TAK (QUANZHOU) Engineering
Machine Manufacture Co.,Ltd



● 格林轻纺有限公司
GREEN Light-Industrial Textile Co.,Ltd



● 力达机电有限公司
LIDA Machinery&Electronic Co.,Ltd



● 恒大工艺有限公司
Fujian HengDa Arts Co.,Ltd



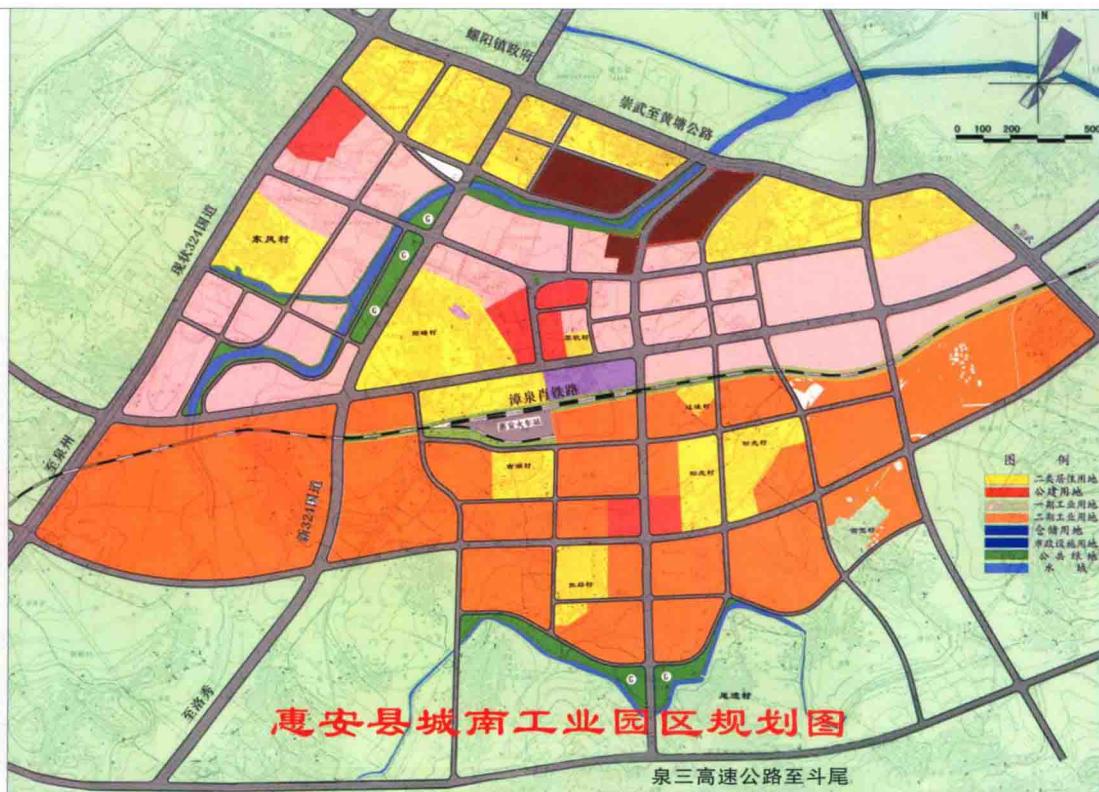
● 嘉德利电子材料有限公司
JIADELI Electronic Material Co.,Ltd



● 科一超纤有限公司
KEY Micro Fibre Co.,Ltd

惠安·城南·工业园区

Hui'an Chengnan Industrial Park



惠安城南中心工业园区系由惠安县人民政府直接投资创办的综合性开发区。总体规划面积6000亩。

地处闽南金三角中部，东临漳泉肖铁路惠安站，西接高速公路互通口，南承泉州洛秀组团，福厦公路贯穿其中，属惠安县城建设总体规划范围内，县城东拓南进的重要工业腹地。

通过“一心一轴多带”的规划布局，打造出一个生态、有机的绿色产业园区。目前已建成3000亩产业园。客户分别来自韩国、新加坡、日本、台湾、香港等国家和地区。现已形成以包袋、鞋服为主导的轻工产品生产基地，关键配套企业不断涌向园区，从而带动产业聚集，推动园区发展。园区正在进行三期开发建设以增强吸纳容量和能量。

Hui'an Chengnan Central Industrial Park is a comprehensive development zone directly invested and managed by Hui'an County People's Government, with a planned area of 400 hectares.

The park is located in the center of the South Fujian Golden Triangle, adjoining the Hui'an stop of Zhangzhou-Quanzhou-Xiaocuo Railway to the east, connecting to the interchange junction of an expressway to the west, bordering Luoxiu area in Quanzhou to the south, and traversed by Fuzhou-Xiamen Highway. The park is within the scope of the master planning of the development of Hui'an county seat and is a major industrial heartland for the eastward and southward expansion of the county seat.

Through the "one-heart, one-axis and multiple-belts" zoning and layout, the park will be built into an ecological, organic green industrial park. By now, a 200-hectare industrial park has taken shape, and businesspeople from South Korea, Singapore, Japan, Taiwan, Hong Kong and other territories have established presence here. Light-industry production bases focused on luggage, footwear, apparel have emerged; key supporting enterprises are swarming into the park, stimulating industry clustering and promoting the park development. At the present time, the 3rd phase of the park is under construction to expand its holding capacity and strength.

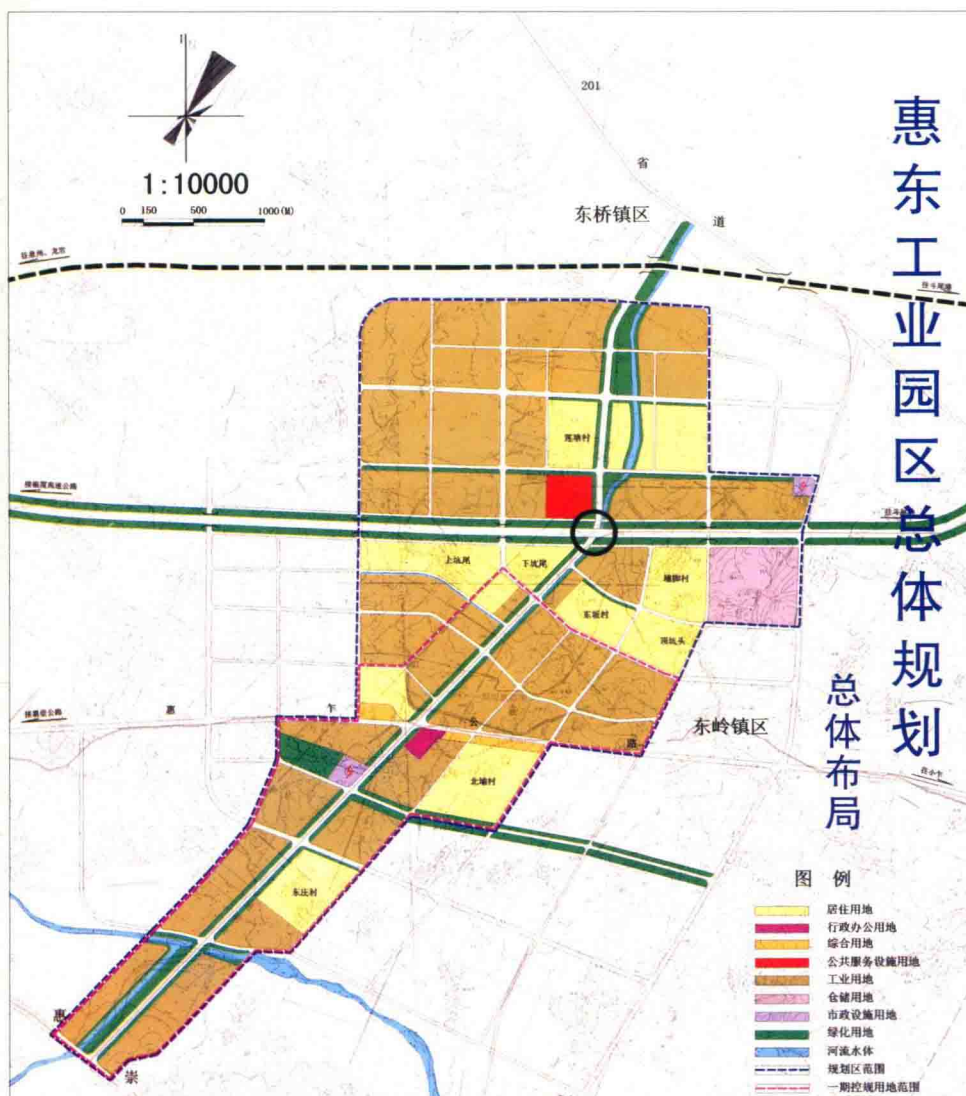
惠安·惠东·工业园区

Hui'an Huidong Industrial Park

『 惠安东部迅速

兴起的一方投资热土 』

『 A rapidly emerging hot investment destination in the eastern part of Hui'an 』



惠东工业园区地处惠安县东部，总体规划面积6平方公里，南接省道惠崇路、规划的快速通道（103米宽）贯穿南北，惠乍路（64米宽）横穿东西，201线、沿海观光大道环区而过。未来园区以规划的全国四大国际中转港口之一的斗尾港为依托，具有广阔的发展前景。

Huidong Industrial Park is located in the eastern part of Hui'an County, with a planned area of six square kilometers. The park adjoins the provincial Huichong Road to the south and is traversed by the planned express passageway (103m wide) in a south-north direction and by Huizha Road (64m wide) in a south-west direction and flanked by the Highway 201 and the coastal sightseeing avenue. In the future, the park will be centered on Douwei Port, one of China's top four planned international ports of transit, enjoying brilliant prospects for development.

惠安·泉惠·石化园区

Hui'an Quanhui Petrochemical

『 打造惠安石化产业基地 』

『 Building Hui'an Petrochemical Industrial Base 』

泉惠石化工业园位于福建省湄洲湾南岸斗尾深水港区。湄洲湾石化基地是国家规划建设的大型石化基地之一，泉惠石化工业园是该基地的重要组成部分。该区气候温和，地势平坦、滩涂开阔，自然条件优越。水陆空交通便捷，港口资源丰富，区域优势明显。适合建设临海大型工业基地，是发展炼油、石油化工、精细化工的最佳地域。

Quanhui Petrochemical Industrial Park is located in the deep-water port of Douwei on the southern coast of Meizhou Bay in Fujian Province. Meizhou Bay Petrochemical Base is one of the large-scaled petrochemical bases under planning by the state, and Quanhui Petrochemical Industrial Park is an integral part of the base. This area features advantageous natural conditions including a mild climate, a flat terrain and vast shoals, and enjoys well-developed sea, land and air transportation systems, with plentiful port resources and remarkable geographic superiority, making it an ideal place for building a large-scaled around-sea industrial base and the best place for developing oil refinery, petrochemical and fine chemical industry.

