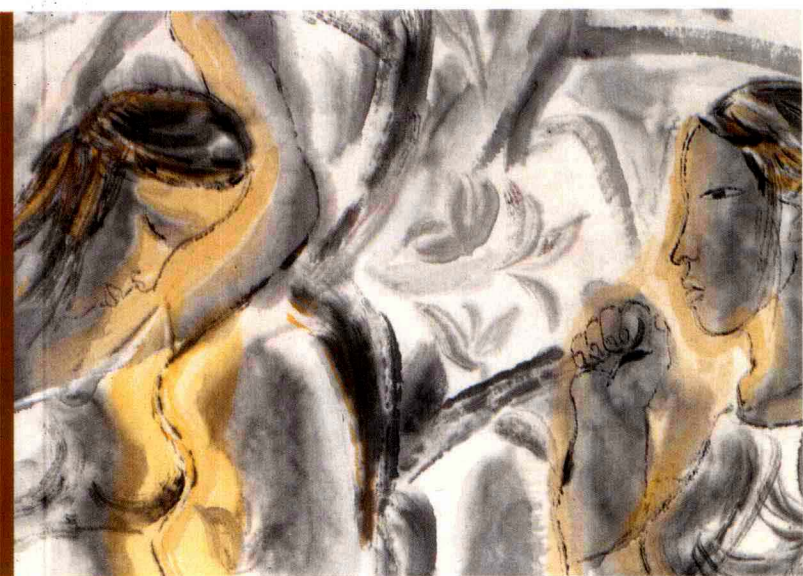


人物卷
「第一辑」

中国画名家 纪京宁

画库

Collected Artworks of Famous Chinese Painters



四川出版集团 四川美术出版社



纪京宁

1957 年生于江苏省南京市
毕业于河北师范大学美术学院
现为中央民族大学美术学院教授

Ji Jing-ning

Ji Jing-ning, born in Nanjing city in Jiangsu province in 1957, was graduated from the school of fine arts in Hebei Normal University. She is now a professor of the school of fine arts in Central University for Nationalities.

画中的女儿在随着自己的女儿长大，画中的母亲也随之在成熟。是画中的生活，还是生活中的画，我已分不清楚。

纪京宁



《美术观点》素来以“直面美术，阐述观点”为编辑主旨，在重视美术学术建设、艺术实践理解和媒体品牌构建的同时，也注重对艺术家在艺术创作过程中的理性思考以及其作品所传达的观点的研究与传播，形成了作者、编者与读者三者之间的良好互动关系，在中国美术界产生了积极影响。

《中国画名家画库》系列丛书的出版，旨在弘扬中华民族优秀文化，展现当代中国画界具有学术探索精神的老中青艺术家的艺术成就，并对他们的学术观点和艺术成果按画科（人物、山水、花鸟）分辑，个案成册，以便广大艺术家、读者之间学习交流、研究借鉴。

编者

2006年3月

Art Viewpoint takes "Direct dialogue between artists and audience" as its guiding editorial principle. The journal emphasizes simultaneous development of the study of fine arts, theory and practice in art, and the quality of multimedia. It also emphasizes research and explication of the creative process of artists and the meaning of what they want to express in their work. The aim of the journal is to improve the mutual understanding and relationship among authors, editors, and readers. It has had a major impact on the art world in China.

The publication of the book series, *Collected Artworks of Famous Chinese Painters*, showcases the excellence of Chinese culture and exhibits the achievements of various generations of contemporary Chinese painters. As a research reference, the series examines the work and perspectives of each artist according to different genres of painting to foster communication and understanding between artists and their audience.

Editor

March, 2006



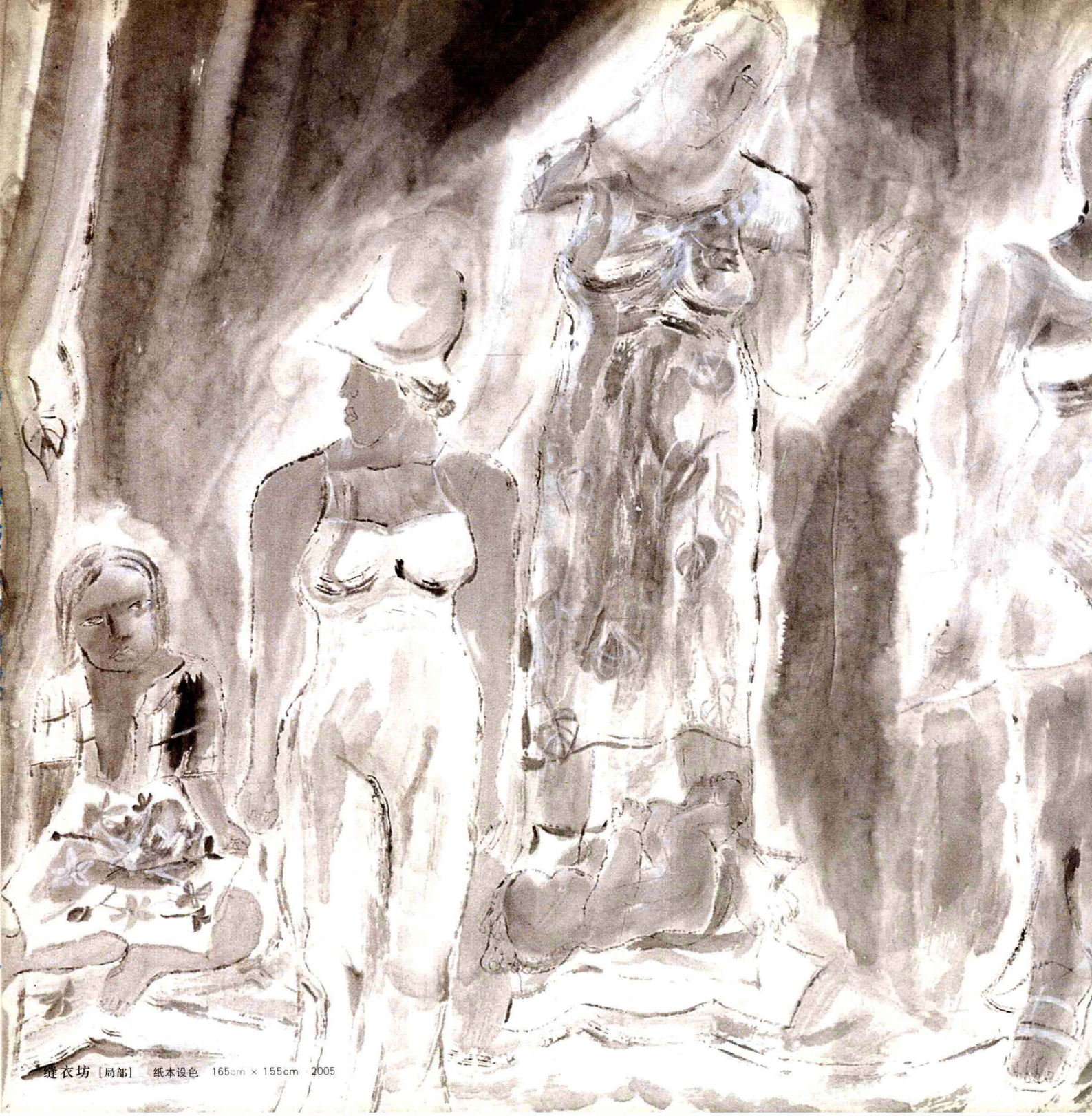
两个女人 纸本设色 58cm × 58cm 1998





和谐 纸本设色 66cm × 76cm 1998





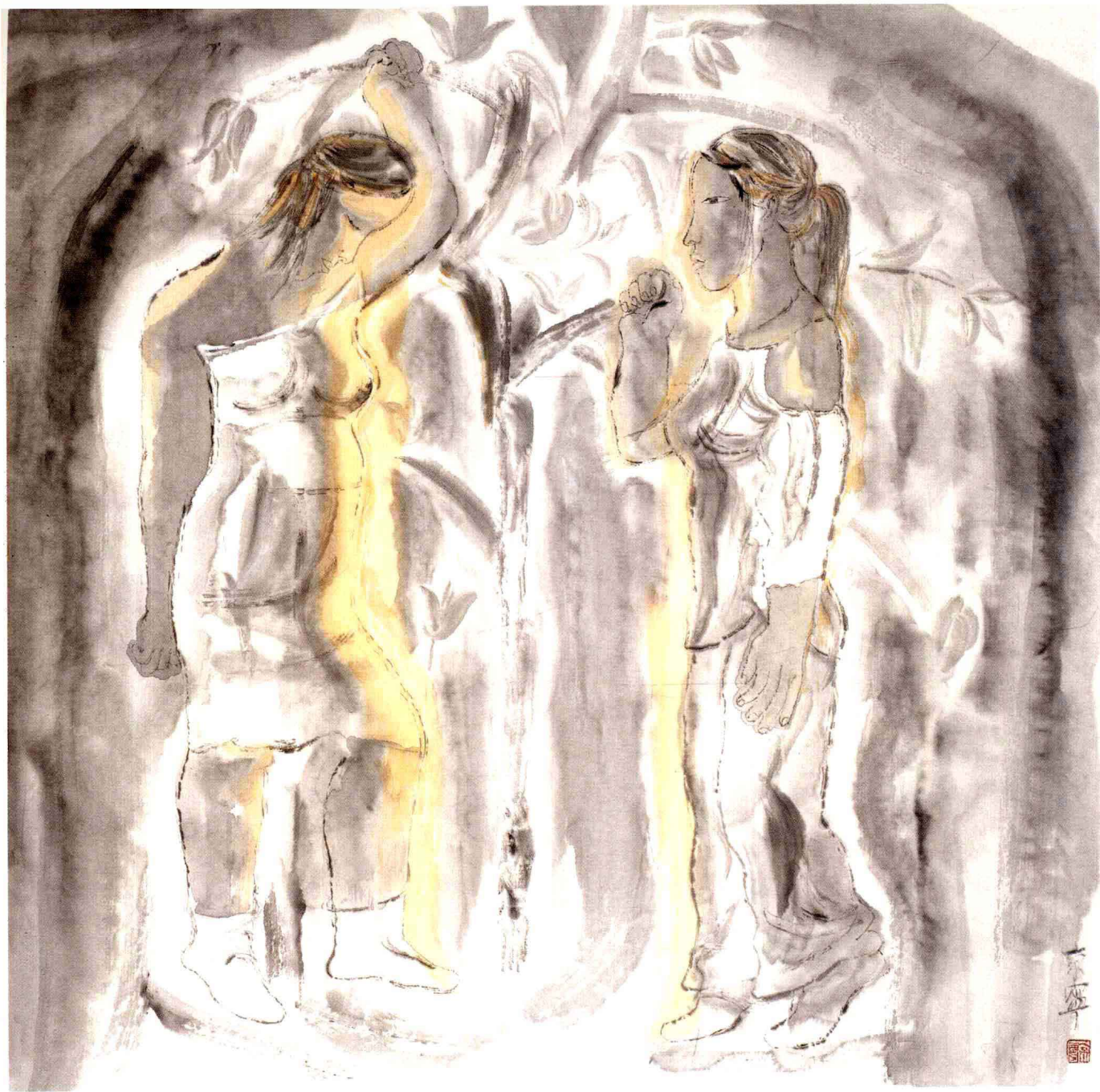
缝衣坊 [局部] 纸本设色 165cm x 155cm 2005



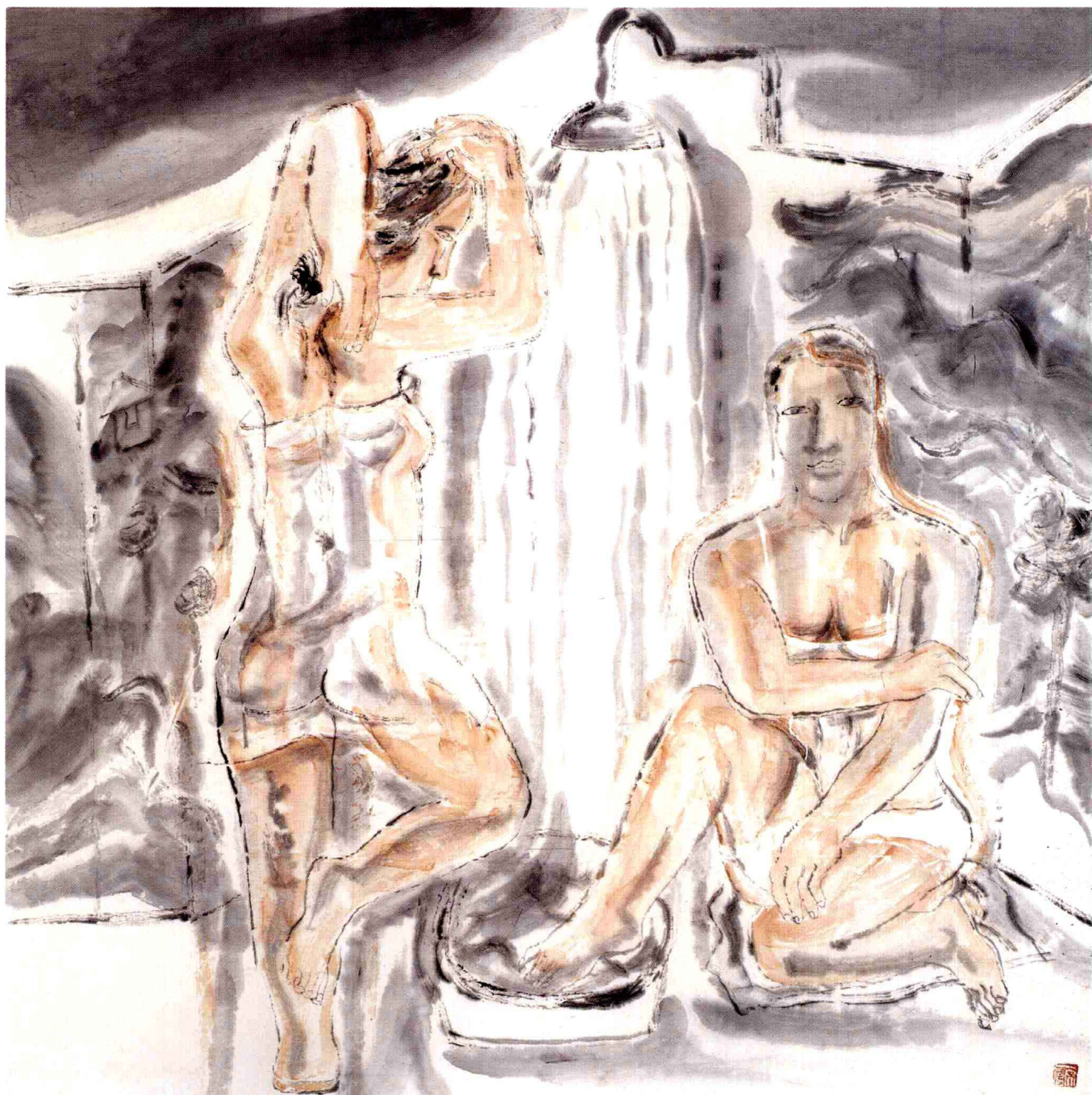


无 语 纸本设色 68cm × 68cm 2005





娱乐 纸本设色 68cm × 68cm 2005



浴女 纸本设色 68cm × 68cm 1998



憧憬 纸本设色 68cm × 68cm 2005



世俗女人 纸本设色 75cm x 75cm 1998



大班车 纸本设色 100cm × 160cm 2004

