

# XIUZHOU

CHINA, 2002

中国·秀洲 2002

 **投资指南**  
GUIDE TO INVESTMENT





F127.554  
2037

## 秀洲概况

秀洲位于浙江省北部，东邻上海，西靠杭州，南濒杭州湾，北接苏州，地处长江三角洲经济重镇——嘉兴市中心城区的西区，区位优势得天独厚。全区总面积542平方公里，人口38万。

秀洲自然条件优越，经济基础较好。制造业发达，丝织、针织、机械、电子等行业富有特色，已形成竞争优势。服务业发展迅速，市场体系完善。农业生产条件十分优越，历来是著名的农副产品生产和出口加工基地，生态农业和观光农业发展迅速。秀洲经济极富成长性和开放性，经济增长速度高于浙江省和嘉兴市总体水平。2001年人均GDP同比增长15.1%，三资企业总投资同比增长144.4%，外贸出口同比增长47.4%。

秀洲历史悠久，是7000多年前马家浜文化的发祥地，文化底蕴深厚，历史上文人辈出。居民勤劳聪慧，淳朴善良。环境优美，生态得到很好的保护。

秀洲区政府突出以法治国，按照WTO规则管理经济。民营企业发展领先于周边地区，私有产权得到很好的保护。

秀洲正以独特的区位优势、富有特色的产业、良好的市场条件和优越的社会生活环境迎接越来越多的海内外投资者来此创业。

## Brief Introduction of Xiuzhou District

Located in the north of Zhejiang Province, Xiuzhou District enjoys advantageous geographical position. It is close to Shanghai in the east, Hangzhou in the west and Suzhou in the north and borders on Hangzhou Bay in the south. It sits to the west of the urban area of Jiaxing municipality, which is a key economic city of Yangtze Delta. Xiuzhou District covers a total area of 542 sq.km with a population of 380,000.

Xiuzhou District boasts of its favorable natural condition and sound economic foundation. It is prosperous in manufacturing industry with a sharp competitive edge, such as silk knitting, yarn knitting, machinery and electronics. The service industry is booming up quickly and a perfect market mechanism in this line has been established. It has also long been claimed as the base of production and export-oriented processing of side-agricultural commodities. At the same time both the ecological agriculture and sightseeing agriculture are developing fast. Xiuzhou District enjoys good momentum in further growing and opening-up in economy. Its economic growing speed is higher than the general level of Jiaxing municipality as well as Zhejiang Province. In the year 2001 the per capita GDP of Xiuzhou District grew up by 15.1%, the total investment of foreign-funded enterprises up by 144.4% and the exportation value up by 47.4% compared with the same period of last year.

Being the origin of Majiabang civilization 7000 years ago, Xiuzhou District has a long history with a colorful culture. Many renowned literati were born in this beautiful land and its people are famous for their diligence. Many renowned literati were born in this beautiful land and its people are famous for their diligence, wisdom, purity and kindness. The natural environment also has been well protected and it is your ideal choice both for living and travel.

The People's Government of Xiuzhou District has always stressed the principle of "rule by law" and regulates the economic system totally abiding by the WTO rules. It takes lead in the development of non-state-owned enterprises and it pays much attention to protect the private property right.

Xiuzhou District, supported by its advantageous geographical position, distinctive industries, sound market condition and favorable social environment, is now welcoming more and more friends all over the world to make investment here.

# GUIDE TO XIUZHOU







秀洲新城模型图 The Model of Xiuzhou New City

# INVESTMENT



秀洲区政府 The People's Government of Xiuzhou District

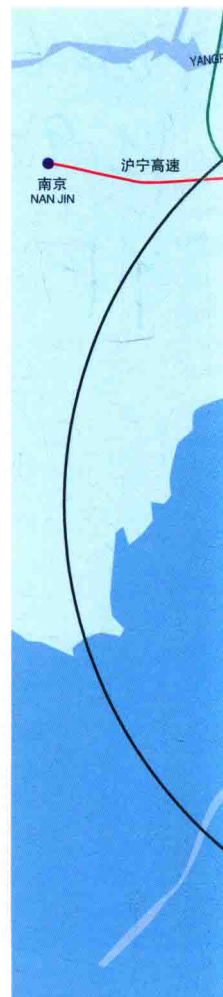




## 得天独厚的区位优势

秀洲位于以上海为龙头的长江三角洲中心地带，距上海、杭州、苏州三地均不超过100公里。长江三角洲是中国最具活力的地区，该地区土地面积、人口、GDP分别占全国的1%、6%、20%，已吸引“外资企业”10000多家。

秀洲是江浙沪区域物流转换枢纽之一，物流成本低。沪杭高速公路、乍嘉苏高速公路在境内交汇，杭州湾跨海大桥正动工兴建。沪杭铁路、京杭大运河、320国道、07省道贯通全区。秀洲距国际海港嘉兴港、上海港、宁波港分别为40km、120km、130km，距杭州、上海机场分别为90公里、100公里。



# GUIDE TO

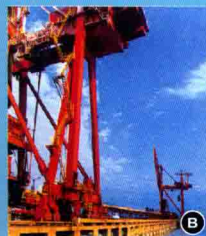
## Advantageous Geographical Position

Being the core of Yangtze Delta (the most energetic area of China with its land area, population and GDP accounting respectively for 1%, 6% and 20% of the whole country), Xiu Zhou District is all less than 100km from Shanghai, Hangzhou and Suzhou and always carries out very close contact as well as solid coordination with the neighboring cities.

As one of the hubs for cargo transfer within the area of Jiangxi, Zhejiang and Shanghai, Xiu Zhou District enjoys low cost in cargo transfer. The Shanghai-Hangzhou Expressway meets the Zhapu-Jiaxing-Suzhou Expressway here and Shanghai-Hangzhou Railway, the Jing-Hang Grand Canal, the 320 National Highway and the NO.07 provincial highway all pass through Xiu Zhou District. A crossing-sea bridge over the Hangzhou Bay is under construction. Meanwhile it is only 40km from Jiaxing Harbor, 120km from Shanghai Harbor and 130km from Ningbo Harbor that are all of international level. It is also only 90km from Hangzhou Airport and 100km from Shanghai Airport.



A 通讯 Telecommunication



B 港口 Harbor

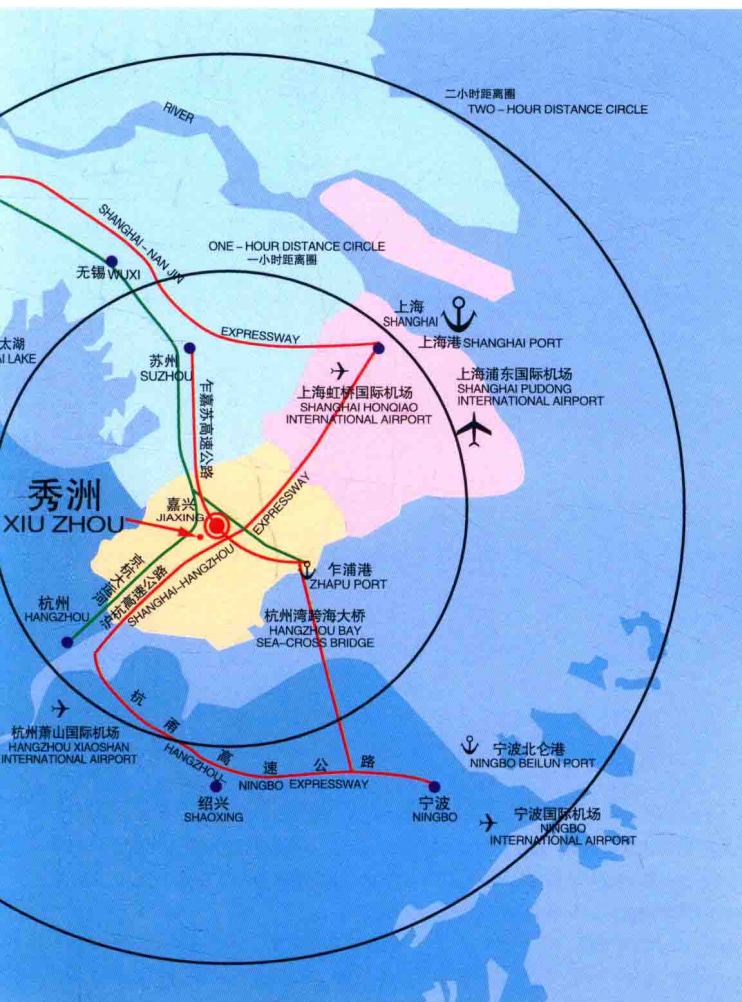


C 高速公路 Expressway



D 排污 Sewage Drainage

## ■ 嘉兴交通位置图 Illustration of Jiaxing's Traffic



# INVESTMENT

## 完善的基础设施

交通：区内交通网络已形成，设有5个高速公路互通式立交出入口，大型集装箱可直接运到全国各地。距秀洲仅3公里的嘉兴铁路站与全国铁路网连接。秀洲开发区可通过高速公路与各机场、港口连接。

供电：华东电网直接供电，电力资源丰富。

供水：三个自来水厂可满足生产生活用水。

通讯：国际国内程控电话、图文传真、移动通信及信息高速公路开通，可与国内外保持快捷方便通讯。

排污：纳入嘉兴市污水处理系统，日污水处理能力30万吨，企业环保成本低。

厂房：正在兴建10万平方米标准厂房，可大大降低企业投产建设时间。

## Perfect Infrastructure

**Traffic:** A convenient traffic network has been fully shaped with five expressway exits. Large-sized containers can carry cargo to every corner of the nation. Jiaxing Railway Station, only 3km from Xiuzhou District, perfectly links with the national railway network. Each development zone in Xiuzhou District is connected with the international airports by expressways.

**Power-Supply:** Being directly supported by the East-China Power Grid, Xiuzhou District has sufficient power resource.

**Water-Supply:** Three water plants can meet both the industrial and domestic water demand.

**Telecommunication:** A sound telecommunication network has been established with facilities of IDD, Fax, mobile phone and information highway. You are assured to keep contact with overseas friends in a quick and convenient way.

**Sewage Drainage:** Included into the municipal sewage drainage system, the drainage pipes of Xiuzhou District has a daily treatment capacity of 300,000 ton and offers a low environment protection cost for local enterprises.

**Factory Buildings:** A group of under-construction standard factory buildings with a construction area of 100,000 sq.m. can advance the business-opening time for enterprises.





## 人力资源与市场环境

秀洲劳动力整体素质高。嘉兴有综合性大学1所、职业技术学院2所和大量成人教育函授点。嘉兴市民特别重视教育投资,为市民科学文化整体素质的提高打下了扎实的基础。秀洲与浙江大学、清华大学、复旦大学等国内一流大学建立紧密的产学研联系,成为这些大学的科研转化基地。

秀洲劳动力成本低廉。每年有6000余名当地大中专毕业生和大量的外地大学毕业生来嘉兴工作。熟练工人能通过劳动力市场方便、快速获得,技术人员、管理人员可通过人才市场招聘,经理人员可通过经理市场选聘。

区内民营经济发达,竞争性的市场环境规范有序。

高效、廉洁、创新、奋进的秀洲区政府使落户秀洲的外资企业普遍感到满意。

## Labor Resources and Market Environment

Generally speaking Xiuzhou District has high-quality labor resources. One university, two professional technique training institutes and a great many adult continuing education institutes locate in Jiaxing. The generous investment by the local citizens in education has laid a solid foundation for the improvement of all-round cultural quality of Jiaxing people. Close ties with many national first-class universities, such as Zhejiang University, Tsinghua University and Fudan University have been established to carry out various research works and Xiuzhou District just functions as the incubation base of these renowned universities.

Each year supported by over 6000 local college and junior-college graduates together with many non-native college graduates who come to Jiaxing to seek jobs, Jiaxing boasts of a considerably low labor cost. Skilled workers can be hired through the labor market, technical and managing staff can be employed through the talents market and managers can be engaged through the special manager market.

Non-state-owned economy of Xiuzhou District enjoys quick development and a regular and healthy market mechanism full of competitiveness has been formed.

Up till now all the in-step foreign-funded enterprises appraise highly of an efficient, clean, enterprising and creative government of Xiuzhou District.



A



B

A 嘉兴学院

Jiaxing University

B 嘉兴职业技术学院

Jiaxing Professional Technique Training Institute

# GUIDE TO IN







A 丝织Silk knitting B 省二星级羊毛衫市场A provincial two-star level market

## 投资领域： 特色制造业

特色制造业颇具规模，全区有6万多台丝织机和3万多台针织机械设 备，丝织、针织、植绒、小家电、不锈钢五大传统制造业产值占全区工业总量的83%，机械、电子、环保、IT等新兴行业发展迅速。秀洲传统产业的改造升级和新兴产业的培育发展有巨大的投资空间。

# INVESTMENT

## Investment Field: Distinctive Manufacturing Industry

The distinctive manufacturing industry of Xiuzhou District has formed a considerably large scale. There are over 60,000 looms and 30,000 knitting equipment and other machinery. The five key traditional industries of silk knitting, yarn knitting, flocking, mini-household electric appliances and stainless steel occupy 83% of the total industrial output of Xiuzhou District. Newly emerging industries, such as machinery, electronics, environment protection and IT are developing fast. There is a wide room for foreign investment in the upgrade and renovation of traditional industries, as well as in the cultivation and development of newly emerging industries.

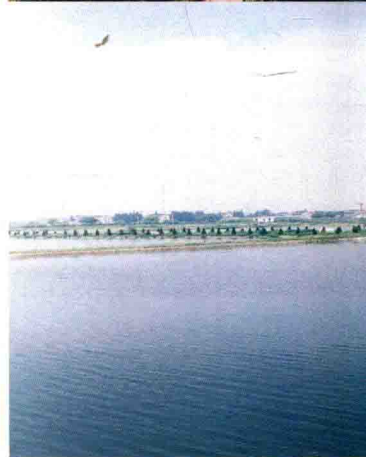




## 投资领域：特色农业

秀洲气候宜人，土地肥沃，历来是鱼米之乡。经过调整农业产业结构，城郊型、科技型、外向型和设施型农业已经形成，已有瓜果、花卉、蔬菜及国家级长江四大家鱼原种基地等四大特色产业。特色种养业、生态农业、农产品的加工特别是淡水鱼深加工有很多的投资机会。

Xiuzhou District enjoys pleasant climate and fertile soil and has long been entitled as the hometown of fish and rice. Through the adjustment of agricultural industrial structure, a new agricultural development model has been created featured by high-tech, export-oriented and sound equipment. Four specialized agricultural industries have been formed, namely melons and fruits, flowers, vegetables and four main fishes of the Yangtze River. There would be many opportunities for foreigners to make investment in specialized farming and breeding, ecological agriculture, agricultural products processing, especially the processing of deep-water fish.

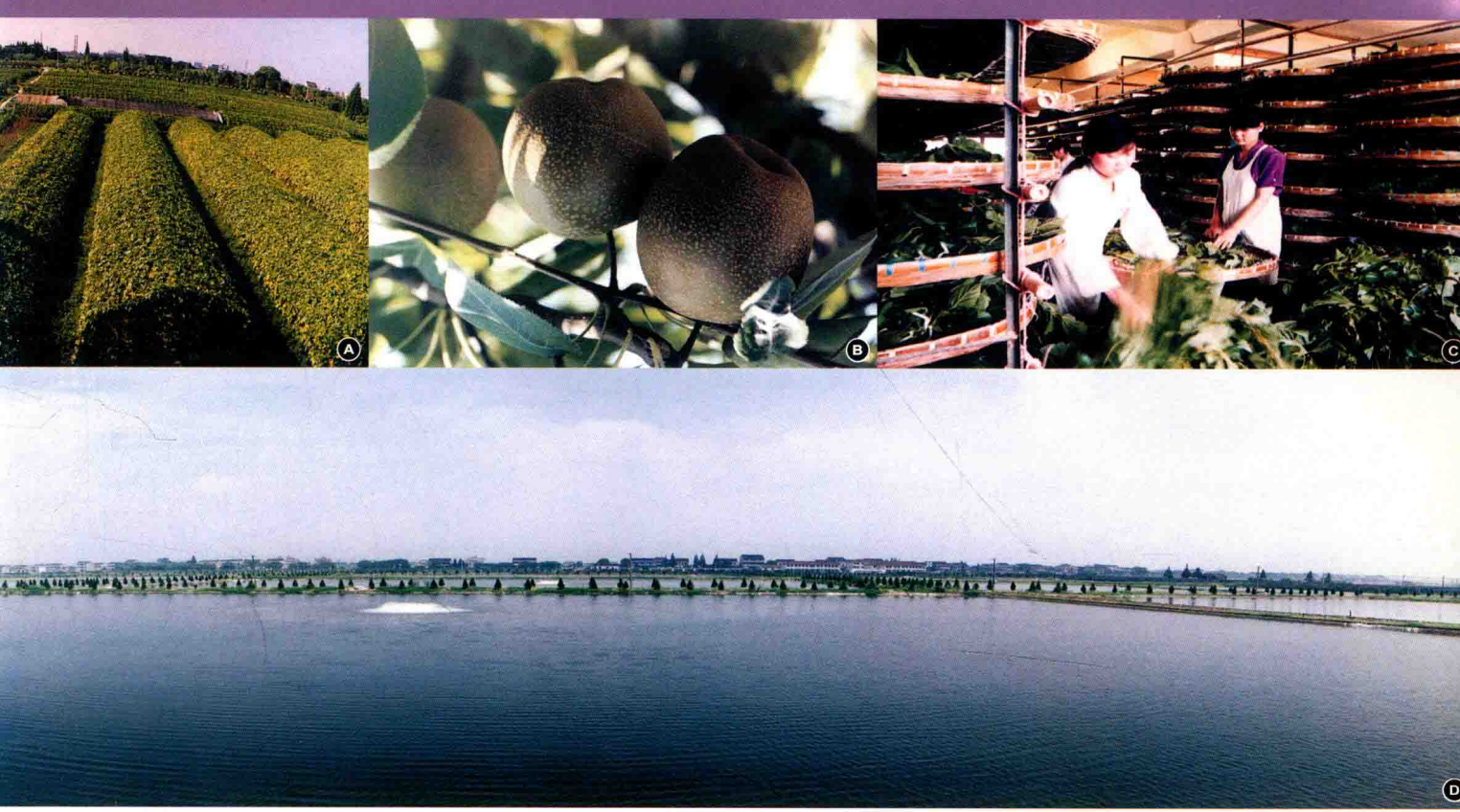


### Investment Field: Specialized Agricultural Industry

# GUIDE TO







A 蔬菜Vegetable B 黄花梨Yellow-Flower Pear C 蚕桑Mulberry D 水产养殖Aquaculture

# XIUZHOU CHINA 2002 INVESTMENT

## 投资领域： 服务业

随着秀洲城市化进程的加快，人口正不断向新城集聚，第三产业发展迅猛，秀洲新城的餐饮、商业、物流、教育、医疗等服务业将面临新的发展机遇，特别是配送中心、连锁超市、医院等城市配套设施建设等方面有很大商机。

## Investment Field:Service Industry

With the quickening of the urbanization process of Xiuzhou District, more and more people are moving to this newly booming-up area that results in a prosperous development of the tertiary industry. Service industries such as restaurant, commerce, commodity distribution, education and health-care all share new development opportunities. Investment especially in establishing commodity collection and distribution center, chain supermarket, hospital and other supporting facilities will enjoy more promising future.





## 重点投资区域：秀洲新城

总面积近40平方公里的秀洲新城是嘉兴市中心城市西侧崛起的一座现代化花园式新城,由商贸文化区、秀洲工业区、加拿大嘉兴科学工业园区和嘉北工业园区四部分组成。近年来已投入建设资金26.5亿元。区位条件优越。秀洲新城在高科技产业、新兴产业及服务服务业的发展上有巨大的商机。

### Key Investment Field: Xiuzhou New City

Xiuzhou New City, covering an area of 40sq.km, is a newly emerging modern garden-style city located to the west of the urban area of Jiaxing City. It consists of four parts, namely the Commercial and Cultural Zone, Xiuzhou Industrial Zone, Canada (Jiaxing) Industrial Park and Jiabei Industrial Park. It enjoys favorable geographical position and up till now has received an accumulated investment of USD 319 million. Xiuzhou New City has a great development potential in high-tech industry, newly booming industry and service industry.

加拿大嘉兴科学工业园区：由秀洲区政府与加拿大加创集团公司联合主办的高科技工业园，受到中加两国政府的大力支持。

Canada(Jiaxing)Industrial Park: Being a high-tech industrial park which is jointly established by the People's Government of Xiuzhou District and Canada Cantronics System, Canada(Jiaxing)Industrial Park gains great support from the governments of both China and Canada.

秀洲工业区：由秀洲区政府主办的新兴工业园，目前进区外资企业已达51家，主要引进外向型高科技企业和新兴工业。

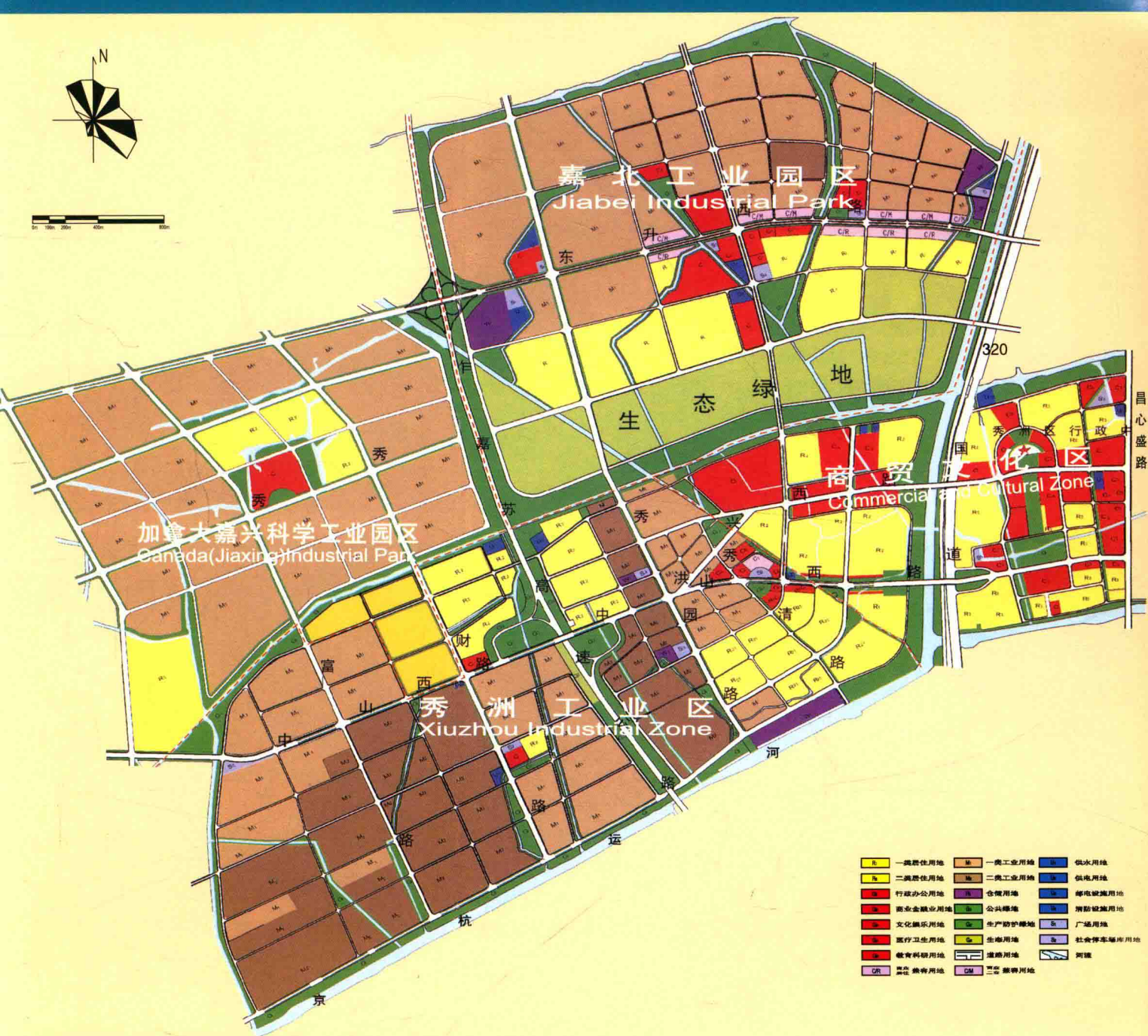
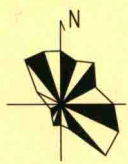
Xiuzhou Industrial Zone: Undertaken by the People's Government of Xiuzhou District, Xiuzhou Industrial Zone mainly focuses on attracting export-oriented enterprises and booming industries. Up till now 51 foreign-funded enterprises have stepped in.

### ■ 加拿大嘉兴科学工业园区 Canada(Jiaxing)Industrial Park

# GUIDE TO INVE







# STATEMENT

## 秀洲新城规划

The Blueprint of Xiuzhou New City

嘉北工业园区：主要引进外向型高科技企业和新兴工业为主，有大面积的生态绿地。

Jiabei Industrial Park: It mainly focuses on the attraction of export-oriented high-tech enterprises as well as IT industries. It also owns a large area of well-protected grassland.

商贸文化区：秀洲新城的城市配套区，主要引进商贸、餐饮、物流、教育、医疗等外资项目。

The Commercial and Cultural Zone: Being the function-supporting area of Xiuzhou New City, Commercial and Cultural Zone is interested in absorbing foreign-funded projects in aspects of commerce, trade, restaurant, commodity circulation, education, health-care and so on.

外资企业也可投资王店、王江泾、新塍、油车港、洪合、塘汇等经济开发区。

Foreign-funded projects are also welcome to invest in the other six economic zones respectively located in the towns and communities of Xiuzhou District.





## 社会生活

秀洲新城幼儿园、小学、中学和双语教育学校注重对学生智力的开发和素质培养，教育质量高；

网球场、游泳池、高尔夫球场等是休闲活动的好去处；

中外餐馆、歌舞厅、咖啡厅提供多彩的餐饮娱乐生活；

秀洲新城拥有满足不同层次需求的住宅，住宅体现了现代化、生态化、智能化，住房价格低于周边城市，秀洲新城正成为人们居住的首选地；

良好的社会治安使人们享受安定的生活。



# GUIDE TO INV

### Social Life:

The kindergarten, primary school, middle school and bilingual school all implement the policy of quality education and pay much attention on the development of student's intelligence.

Tennis course, swimming pool and golf course are the ideal places where you can relax and refresh yourself;

Chinese or western style restaurants, Disco centers and coffee bars are just where you can find fun and enjoy yourself;

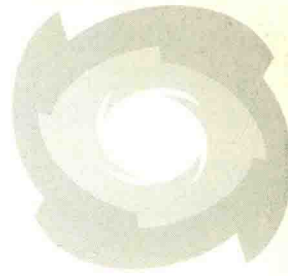
A group of residential quarters with different designs can meet a wide range of demands. All the residential quarters are fully featured by modernity, ecology and intelligent function, while the house price is still lower than that of the neighboring cities'.

Sound social security ensures the residents a safe and peaceful life.



A 饭店 (西餐) Western-Style Restaurant B 球场 Golf Course C 住宅 Residential Quarter  
D 学校 School E 医院 Hospital F 夜景 Night View





ESTMENT



A 台资企业 Taiwanese-funded enterprise B 日资企业 Japanese-funded enterprise

## 入区外资企业

目前秀洲已有外商投资企业近200家，投资来源地主要有日本、韩国、欧盟、美国、加拿大、香港、台湾等，均表现出良好的业绩。

## In-Step Foreign-Funded Enterprises

Up till now there are nearly 200 foreign-funded enterprises in Xiuzhou District which all carry out sound business operations. Foreign investors of these enterprises mainly come from Japan, Korea, EU, USA, Canada, Hong Kong and Taiwan.





## Preferential Tax Policies

### 税收优惠政策

#### 一、基本优惠

来秀洲投资的外资企业可享受国家规定的所得税“二免三减半”等优惠政策。

#### 二、以下项目享受特别优惠

- 1、重大投资项目、高新技术项目；
- 2、秀洲鼓励的传统产业改造升级和新兴工业项目；
- 3、特色农业、服务业、基础设施建设工程。

A.General preferential policy:According to the regulation stipulated by the state council,foreign-funded enterprises should be exempted from the enterprise income tax during the first two profit-making years and should be levied by half during the following three profit-making years.

B.Projects that can enjoy other preferential policies stipulated by the local government are as the follows:

1. key projects and high-tech projects;
2. projects focusing on the upgrade and renovation of traditional industries encouraged by the local government and newly booming-up industrial projects;
3. projects invested in the areas of specialized agriculture, service industry and infrastructure construction.



# GUIDE TO INVESTMENT

## 优质服务

- 1、项目引进阶段，提供项目咨询、项目签约、申报批准等全过程服务体系；
- 2、项目建设阶段，提供工商税务登记、银行开户、土地批租、水电安装、员工招聘等全方位服务体系；
- 3、项目投产以后，继续提供劳动保险、产品检测、设备更新、产品出口报关、资金融通等全天候服务体系。

## High-Quality Service

1. Project Establishment Stage: Whole-process services will be carried out from the beginning to the end covering the procedures of project inquiry, application for approval and obtaining the business license;
2. Project Construction Stage: All-round services will be applied in matters concerning registration with the taxes bureau, and the Commercial and Industrial Administrative Bureau, opening an account with the bank, renting the land, installation of the water and power facilities, employing labors and so on;
3. Business Operation stage: Regular services will be provided to help foreigners to carry out labor insurance, products inspection, Customs clearance and obtaining finances.

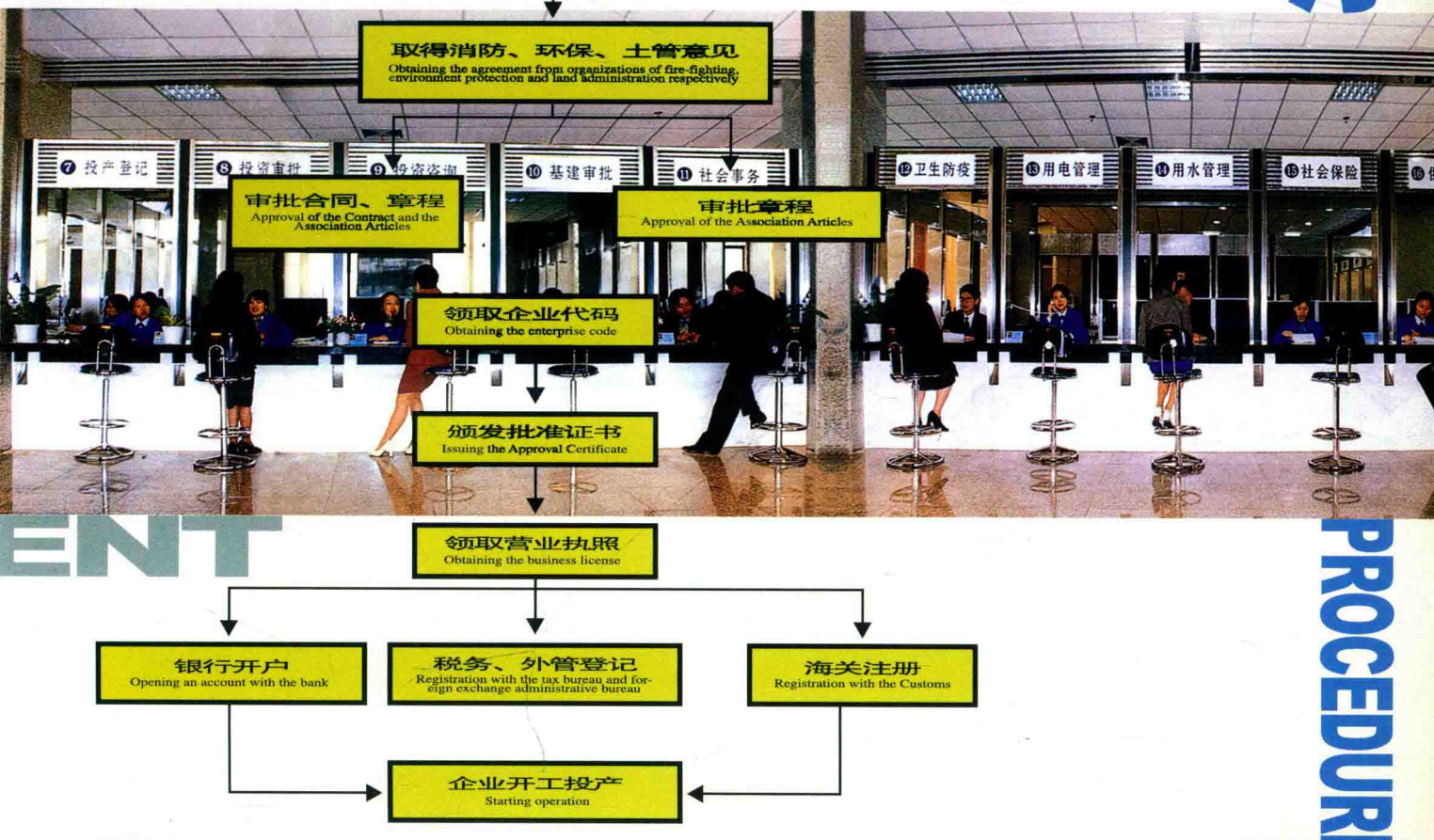


# 三资企业 审批流程图

THE FLOW TABLE OF

APPROVAL OF FOREIGN-FUNDED ENTERPRISES

审批程序







浙江省嘉兴市秀洲区人民政府

THE PEOPLE'S GOVERNMENT OF XIUZHOU DISTRICT, JIAXING CITY, ZHEJIANG PROVINCE

电话 Tel: 86-573-2720200

传真 Fax: 86-573-2720220

邮编 P.C.: 314001

网址: Website: <http://www.jxxz.com>