

ArchMosaica

Design + Concept + Script + Process

ARCHITECTS INDEX(A^TOZ):

3LHD, A-LAB, ALEJANDRO ARAVENA, ANTÓN GARCÍA-ABRIL & ENSAMBLE STUDIO, ANTTINEN OIVA ARCHITECTS, ATELIER BOW-WOW, AUM-PIERRE MINASSIAN ARCHITECTE, BRISAC GONZALEZ ARCHITECTS, DELLEKAMP ARQUITECTOS, DIERENDONCK BLANCHE ARCHITECTS, DIETMAR FEICHTINGER ARCHITECTS, DOSMASUNO ARQUITECTOS, EMRE AROLAT ARCHITECTS, ESTUDIO CARME PINÓS, FASHION ARCHITECTURE TASTE (FAT), FRANCISCO MANGDO, GPY ARQUITECTOS, GROUP A, IBOS & VITART, I/O ARCHITECTS, KHR ARKITEKTER, KSV KRÜGER SCHUBERTH VANDREIKE, KWK PROMES, LORCAN O'HERLIHY ARCHITECTS, LONGHI ARCHITECTS, MASSIMO MARIANI ARCHITETTO, MOS, ONE ARCHITECTURE, P-A-T-T-E-R-N-S, PAULO DAVID ARQUITECTOS, ATELIER PHILEAS, PLASMA STUDIO, PRODUCTORA, RCA ARCHITECTES, ROJKIND ARQUITECTOS, SAUCIER + PERROTTE ARCHITECTES, TURÁNYI & TURÁNYI ARCHITECTS (T2.A), THE NEXT ENTERPRISE, ULARGUI & PESQUERA ARQUITECTOS, UN STUDIO, VAÍLLO & IRIGARAY, VMX ARCHITECTS, WIEL ARETS ARCHITECTS, WWA ARCHITECTS, XPIRAL

CURATED AND EDITED BY BRUCE Q. LAN AADCU PROGRAM

ArchMosaica

Design + Concept + Script + Process

ARCHITECTS INDEX(A^TOZ):

3LHD, A-LAB, ALEJANDRO ARAVENA, ANTÓN GARCÍA-ABRIL & ENSAMBLE STUDIO, ANTTINEN OIVA ARCHITECTS, ATELIER BOW-WOW, AUM-PIERRE MINASSIAN ARCHITECTE, BRISAC GONZALEZ ARCHITECTS, DELLEKAMP ARQUITECTOS, DIERENDONCK BLANCHE ARCHITECTS, DIETMAR FEICHTINGER ARCHITECTS, DOSMASUNO ARQUITECTOS, EMRE AROLAT ARCHITECTS, ESTUDIO CARME PINÓS, FASHION ARCHITECTURE TASTE (FAT), FRANCISCO MANGDO, GPY ARQUITECTOS, GROUP A, IBOS & VITART, I/O ARCHITECTS, KHR ARKITEKTER, KSV KRÜGER SCHUBERTH VANDREIKE, KWK PROMES, LORCAN O'HERLIHY ARCHITECTS, LONGHI ARCHITECTS, MASSIMO MARIANI ARCHITETTO, MOS, ONE ARCHITECTURE, P-A-T-T-E-R-N-S, PAULO DAVID ARQUITECTOS, ATELIER PHILEAS, PLASMA STUDIO, PRODUCTORA, RCA ARCHITECTES, ROJKIND ARQUITECTOS, SAUCIER + PERROTTE ARCHITECTES, TURÁNYI & TURÁNYI ARCHITECTS (T2.A), THE NEXT ENTERPRISE, ULARGUI & PESQUERA ARQUITECTOS, UN STUDIO, VAÍLLO & IRIGARAY, VMX ARCHITECTS, WIEL ARETS ARCHITECTS, WWA ARCHITECTS, XPIRAL

CURATED AND EDITED BY BRUCE Q. LAN AADCU PROGRAM

建筑手册

建筑手册 ∞ 设计 概念 脚本 过程

AADCU Publication
www.aadcu.org
info@aadcu.org

© 2010 AADCU

ISBN: 978-7-5609-6040-1

All rights reserved. No part of this publication may be reproduced,stored in a retrieval system or transmitted in any form or by means, electronic, mechanical, photocopying, recording or otherwise, without the permission of AADCU.

Project Director: Bruce Q. Lan
Coordinator: Xiaoqu Luo/Stanford University
Curator/Editor In Chief: Bruce Q. Lan
Book Design: Bruce Q. Lan with °C Office®
Edited and Published by: Beijing Office/United Asia Art&design Cooperation/bj-info@aadcu.org
In Collaboration with: d-Lab&International Architecture Research; °C Office®

©本书所有内容均由原著权人授权美国亚洲艺术与设计协作联盟编辑出版,并仅限于本项目使用。任何个人和团体不得以任何媒介形式翻录。依照国际知识产权公约和世界知识产权组织(WIPO)公约,美国亚洲艺术与设计协作联盟出版项目将对在中国区域内发现的盗版行为向美国国家版权管理局和欧盟知识产权集体管理委员会提送报告和取证,版权人所在国的知识产权管理机构拥有经由世界知识产权组织协调委员会向盗版所在国知识产权管理机构提起国际法律诉讼的权力。

编辑出版: 亚洲艺术与设计协作联盟\美国\info@aadcu.org
协同合作: 国际建筑研究与设计中心\美国;零度事务\美国
学术策划: 蓝青
国际协调: 罗小渠\斯坦福大学
书籍设计: 蓝青, °C Office®

acknowledgements

This publication has been made possible with the help and cooperation of many individuals and institutions. Special thanks are due to the 45 contributors in this volume: 3LHD, A-Lab, Alejandro Aravena, Antón García-Abril & Ensamble Studio, Anttinen Oiva Architects, Atelier Bow-Wow, AUM-Pierre Minassian Architecte, Brisac Gonzalez Architects, Dellekamp Arquitectos, Dierendonck Blancke Architects, Dietmar Feichtinger Architects, Dosmasuno Arquitectos, Emre Arolat Architects, Estudio Carme Pinós, Fashion Architecture Taste (Fat), Francisco Mangdo, GPY Arquitectos, Group A, Ibos & Vitart, I/O Architects, KHR Arkitekter, KSV Krüger Schuberth Vandreiike, KWK Promes, Lorcan O'Herlihy Architects, Longhi Architects, Massimo Mariani Architetto, MOS, One Architecture, P-A-T-T-E-R-N-S, Paulo David Arquitectos, Atelier Phileas, Plasma Studio, Productora, RCR Arquitectes, Rojkind Arquitectos, Saucier + Perrotte Architectes, Turányi & Turányi Architects (T2.a), the next ENTERprise, Ulargui & Pesquera Arquitectos, UN Studio, Vaíllo & Irigaray, VMX Architects, Wiel Arets Architects, WWA Architects, Xpiral.

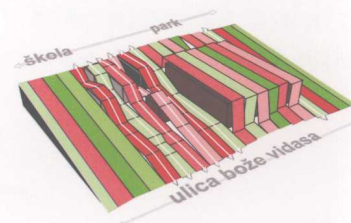
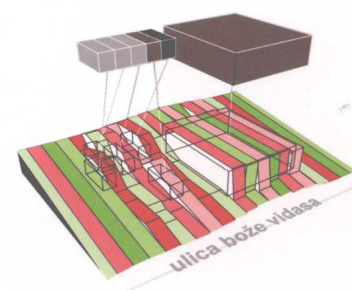
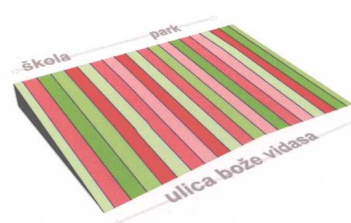
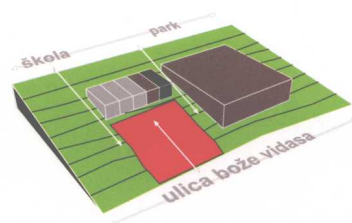
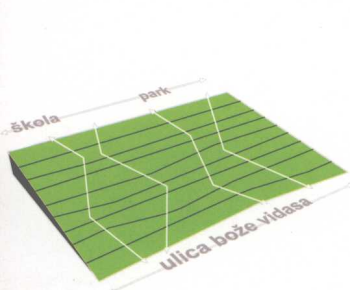
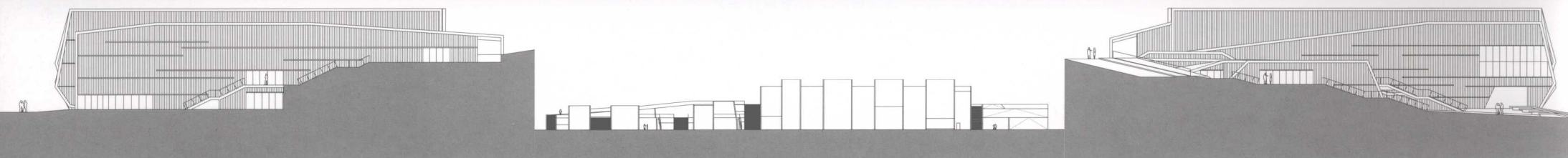
CONTENTS

3LHD Zamet Centre Zagreb Dance Center Spaladium Centre Sports/City Hall Bale	008	Emre Arolat Architects Santralistanbul Museum of Contemporary Arts Dalaman International Airport Terminal Sabiha Gökçen International Airport Terminal Minicity Theme Park Building	136
A-Lab Deichmanske Main Library in Oslo Arctic Culture Centre	026	Estudio Carme Pinós Caixaforum Primary School in Castelldefels Cube Tower	154
Alejandro Aravena St. Edward's University New Residence and Dining Hall	036	Fashion Architecture Taste (Fat) Hoogvliet Villalst ington Square Sint Lucas Art Academy	164
Antón García-Abril & Ensamble Studio Hemeriscopium House Tower of Music	042	Francisco Mangdo Ávila Congress and Exhibition Municipal Centre University Swimming Pools. Orense Museum of Archeology in Vitoria High Performance Equestrian Centre. Ultzama	174
Anttinen Oiva Architects The University of Helsinki City Campus Library Lilja Ecumenical Meditative Chapel Sámi Cultural Centre	056	GPY Arquitectos Tenerife School of Dramatic Arts Faculty of Fine Arts, University of La Laguna	200
Atelier Bow-Wow Double Chimney Pony Garden Ordos 100	070	Group A Blok 1 Presikhaaf Caballerofabriek	210
AUM-Pierre Minassian Architecte Biscuit House	078	Ibos & Vitart The Andre Malraux Library Rennes Archives Apartment	220
Brisac Gonzalez Architects Multi Purpose Hall Peacock Visual Arts Centre Museum of World Culture	084	I/O Architects Liulin Apartment Block	236
Dellekamp Arquitectos CB 29, CB 30 Ordos 100	096	KHR Arkitekter Church of Holy Cross Building Fiberline Hedorf Residence Hall Ørestad School	240
Dierendonck Blancke Architects Community Centre Avelgem Open Air Swimming Pool on the Beach	100	KSV Krüger Schuberth Vandreike 2008 Beijing International Fair, BMW Brand 2009 Shanghai, BMW + MINI Brand	248
Dietmar Feichtinger Architects Footbridge Valmy Financial and Commercial Department of Voest Alpine Stahl GMBH	110	KWK Promes Aatrial House	254
Dosmasuno Arquitectos Carabanchel Socical Dwellings	124		

Outrial House		
Lorcan O’Herlihy Architects	262	
Formosa 1140		
Habitat 825		
Willoughby 7917		
Longhi Architects	274	
Pachacamac House		
Beach House at Punta Misterio		
Massimo Mariani Architetto	282	
Cabel Industry		
Museo Di Benozzo Gozzoli		
MOS	296	
Arcade		
Arts Archipelago		
Terry Winters Studio		
Ordos 100		
One Architecture	306	
St. Jozef Health Center		
P-A-T-T-E-R-N-S	312	
Broad Café		
Manifold Dubai		
Paulo David Arquitectos	320	
Câmara de Lobos Bay Revedelopment		
Art Center - Casa Das Mudas		
Atelier Phileas	330	
Line13 HQ		
HUB		
Plasma Studio	336	
Flowing Gardens, International Horticultural Expo 2011		
Strata Hotel		
Productora	344	
House in Chihuahua		
RCR Arquitectes	350	
Library, Senior Citizens’ Centre and City Block Core Zone		
Rojkind Arquitectos	360	
Nestlé Application Group Querétaro		
Saucier + Perrotte Architects	370	
Perimeter Institute for Research in Theoretical Physics		
Scandinave Les Bains Vieux-Montréal		
Turányi & Turányi Architects (T2.a)	380	
Waterfront Kopaszi Dam		
the next ENTERprise	392	
Lakeside Bath		
Cloud Tower		
Vertical Bathingscape		
Ulargui & Pesquera Arquitectos	412	
Fine Arts Museum of Pontevedra		
Ibiza Congress Palace		
Restoration of Cubo del Revellodn		
UN Studio	424	
Music Theater, Graz		
Vaíllo & Irigaray	436	
Tower Offices + Hotel		
Office Silo + Containers		
VMX Architects	452	
Aziëweg Dwellings		
Directie Noordzee		
S-House		
Wiel Arets Architects	462	
Living Madrid - Pradolongo Housing		
Europol		
WWA Architects	474	
Polish Expo 2010 Exposition Pavilion		
Xpiral	480	
Casa de Los Pinos		

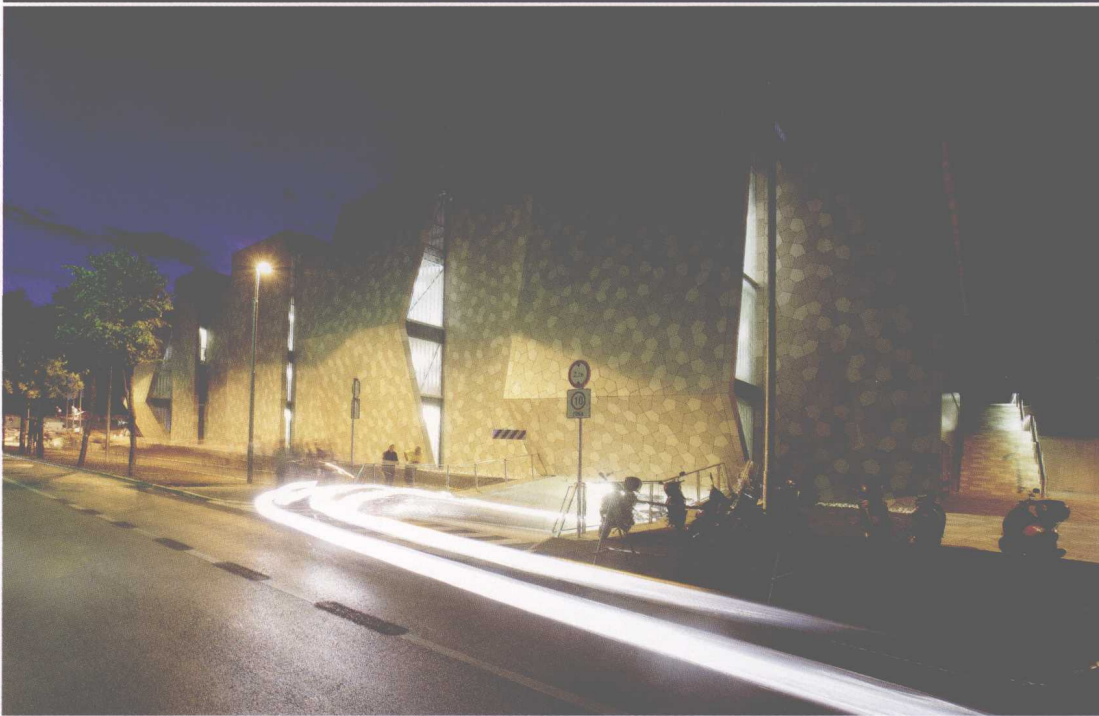
3LHD ZAMET CENTRE

Project team: Sasa Begovic, Tatjana Grozdanic Begovic, Marko Dabrovic, Silvije Novak, Paula Kukuljica, Zvonimir Marcic, Leon Lazaneo, Eugen Popovic, Nives Krsnik Rister, Andrea Vukojic ¶ Collaborators: Mateo Bilus, Building Physics / Details; Berislav Medic, UPI-2M, Structural Engineering; Branko Corko, IPZ-elektroinzenjering 22, Electrical Engineering; Mario Lukenda, Termoinzenjering-projektiranje d.o.o., HVAC; Slavko Simunovic, HIT PROJEKT, MEP Engineering - Plumbing; Nenad Semenov, PASTOR, sprinkler installation; Rok Pietri, LIFT MODUS, elevators; Zeljko Arbanas, IGH PC Rijeka, diaphragm wall; Zeljko Stipkovic, Fire Protection; Ivica Babic, Zavod za zastitu na radu Rijeka, Safety at Work; Marija Babojelic, Special Consultant - Cost Consultant; Ines Hrdalo, Landscape Architect; Damir Bralic, Lana Cavar i Narcisa Vukojevic, signage and environmental graphics design; Nikola Durek, "Typonine Zamet" typeface design ¶ Program: public, cultural, business, sport ¶ Location: Rijeka, Croatia; Client: Grad Rijeka / Rijeka Sport d.o.o. ¶ Project start date: 2004; Construction end date: 10.09.2009 ¶ Site area (m²): 12289; Size (m2): 16830; Volume (m³): 88075; Footprint (m²): 4724; Entry level: 103; Budget (EUR): 20 mil





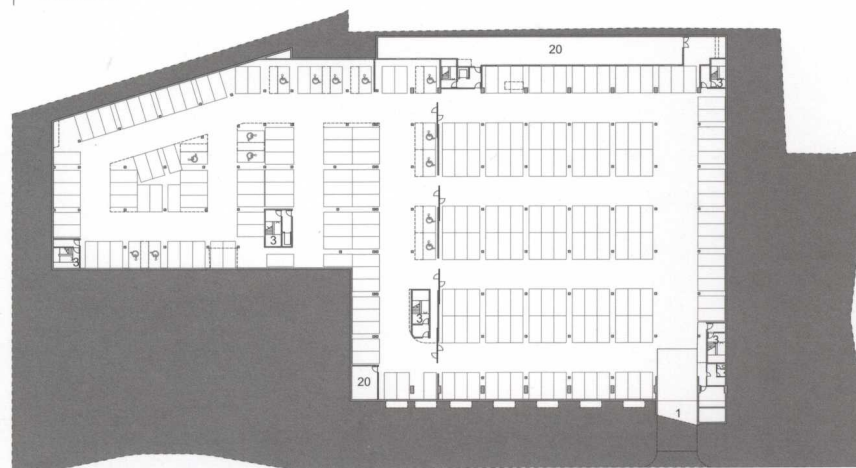
Situated in Rijeka's quarter Zamet, the new Zamet Centre in complete size of 16830 m² hosts various facilities: sports hall with max 2380 seats, local community offices, library, 13 retail and service spaces and a garage with 250 parking spaces. ¶ The goal and a perpetual guideline for the project were the evaluation and a minimum distortion of the existing urban environment. One third of the sports hall volume is cut in the ground, and the rest of the Centre is fully fitted into the surrounding landscape. The building's main architectural element are ribbon-like linear stripes stretching over the site in a north-south direction, functioning at the same time as an architectural design element of the object and as a zoning element which forms a public square and a link between the park on the north and school and B. Vidas street on the south. ¶ The stripes were inspired by "gromaca", a type of rocks specific to Rijeka, which the centre artificially reinterprets by colour and shape. They are paved with 51.000 ceramic tiles designed by 3LHD and manufactured specially for the centre. The steel construction, girder span of 55 meters and their varying height allow the natural light to illuminate the sports hall. ¶ The hall has been designed in accordance with the latest world sports standards for major international sports competitions. The concept is based on flexibility of space. Playground size is 46 x 44 meters, for two handball courts. The hall contains all the supporting facilities for professional training and competition, and the auditorium designed as a system of telescopic stands enables the transformation for everyday use as well as for other activities such as concerts, conferences and congresses. Selected interior materials - wood and acoustic panels and the equipment used to furnish the hall suggest that it is a large living room for athletes. The main access to the hall and other facilities is located west of the hall from the public square and from the underground garage.





1
3
20

Entry
Staircase
Technical room





roof construction

ceramic tiles on aluminium construction	11 mm
ventilated cavity	-
two-layer TPO roof seal	4 mm
sloping polystyrene rigid-foam thermal insulation	200 mm
vapour barrier	5 mm
corrugated steel sheeting	137 mm
steel structure	
wood wool acoustic panels	

wall construction - ceramic tiles

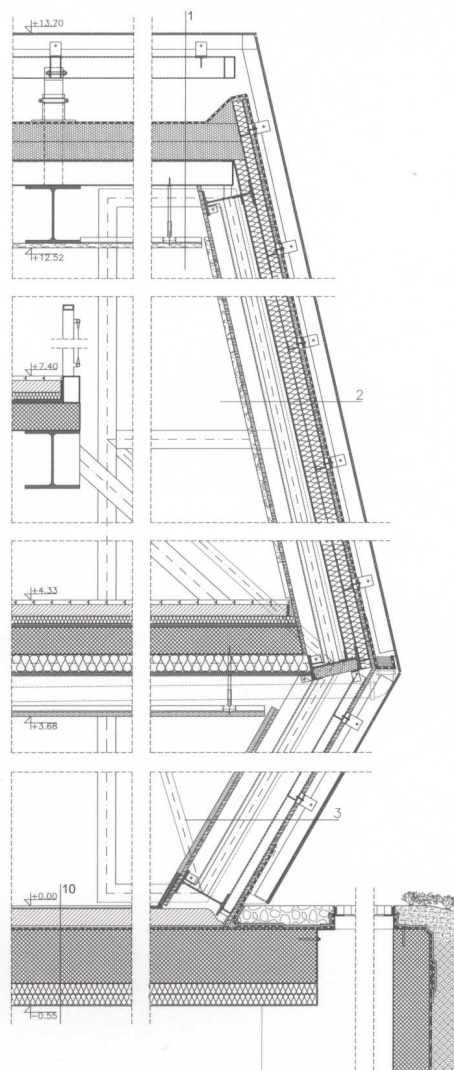
wood wool acoustic panels	25 mm
oriented-strand board on wood construction	20 mm
air cavity	-
vapour barrier	0.2 mm
mineral wool thermal insulation	120 mm
oriented-strand board	20 mm
sealing layer	4 mm
ventilated cavity	-
ceramic tiles on aluminium construction	11 mm

wall construction - ceramic tiles

fibre-cement board	25 mm
oriented-strand board on wood construction	20 mm
air cavity	-
oriented-strand board on steel construction	20 mm
vapour-permeable and water-resistant membrane	1 mm
air cavity	-
ceramic tiles on aluminium construction	11 mm

floor construction

cast floor - polyurethane	3 mm
screed	65 mm
separating layer	0.2 mm
expanded polystyrene impact-sound insulation EPS	40 mm
elastic expanded polystyrene EPS-T	20 mm
reinforced concrete slab	300 mm
mineral wool thermal insulation	120 mm
plaster	2 mm



1 roof construction

ceramic tiles on aluminium construction	11 mm
ventilated cavity	-
two-layer TPO roof seal	4 mm
sloping polystyrene rigid-foam thermal insulation	200 mm
vapour barrier	5 mm
corrugated steel sheeting	137 mm
steel structure	
wood wool acoustic panels	

4 wall construction - U profiled glass

2x12.5mm plasterboard	25 mm
oriented-strand board on steel construction	20 mm
air cavity	-
vapour barrier	0.2 mm
oriented-strand board on steel construction	20 mm
rock wool thermal insulation	120 mm
ventilated cavity	40 mm
U-profiled glass in aluminium frame	83 mm

5 wall construction - U profiled glass

reinforced concrete wall	300 mm
rock wool thermal insulation	120 mm
ventilated cavity	40 mm
U-profiled glass in aluminium frame	83 mm

6 wall construction in ground

reinforced concrete wall	300 mm
bentonite-geotextile waterproofing membrane	6.4 mm
sloping polystyrene rigid-foam thermal insulation	80 mm
soil layer	100 mm
drainage layer of gravel	

7 wall construction in ground

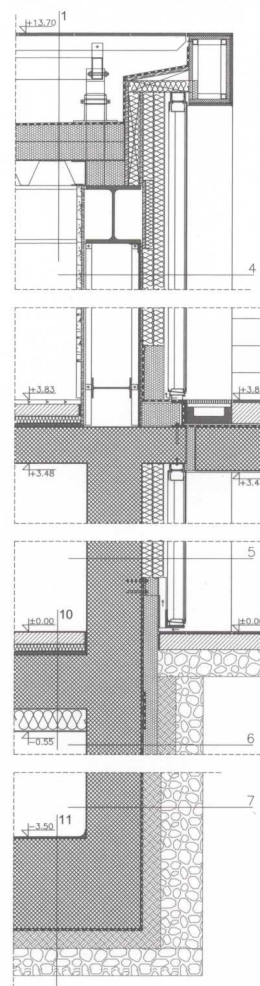
reinforced concrete wall	300 mm
bentonite-geotextile waterproofing membrane	6.4 mm
soil layer	100 mm
drainage layer of gravel	

10 floor construction

cast floor - polyurethane	3 mm
screed	65 mm
separating layer	0.2 mm
expanded polystyrene impact-sound insulation EPS	40 mm
elastic expanded polystyrene EPS-T	20 mm
reinforced concrete slab	300 mm
mineral wool thermal insulation	120 mm
plaster	2 mm

11 ground floor construction

epoxy coating	3 mm
reinforced concrete foundation slab	500 mm
bentonite-geotextile waterproofing membrane	6.4 mm
soil layer	100 mm
bed of gravel	



1 roof construction

ceramic tiles on aluminium construction	11 mm
ventilated cavity	-
two-layer TPO roof seal	4 mm
sloping polystyrene rigid-foam thermal insulation	200 mm
vapour barrier	5 mm
corrugated steel sheeting	137 mm
steel structure	
wood wool acoustic panels	

8 floor construction

parquet	15 mm
screed	65 mm
separating layer	0.2 mm
expanded polystyrene impact-sound insulation EPS	40 mm
elastic expanded polystyrene EPS-T	20 mm
reinforced concrete slab	150 mm
air cavity	-
wood wool acoustic panels	25 mm

9 floor construction

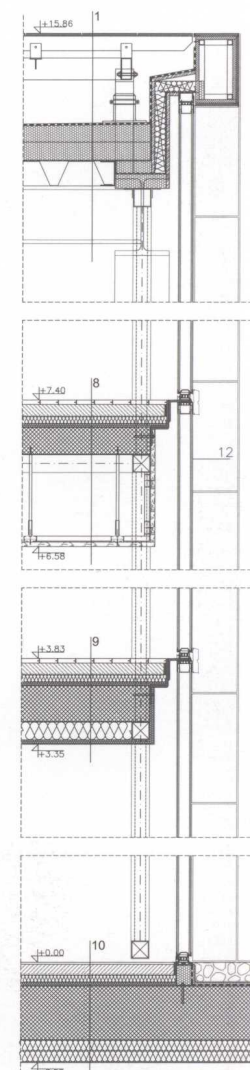
parquet	15 mm
screed	65 mm
separating layer	0.2 mm
expanded polystyrene impact-sound insulation EPS	40 mm
elastic expanded polystyrene EPS-T	20 mm
reinforced concrete slab	200 mm
rock wool thermal insulation	120 mm

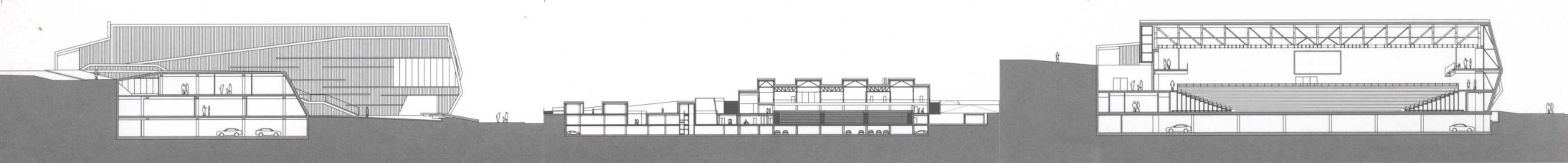
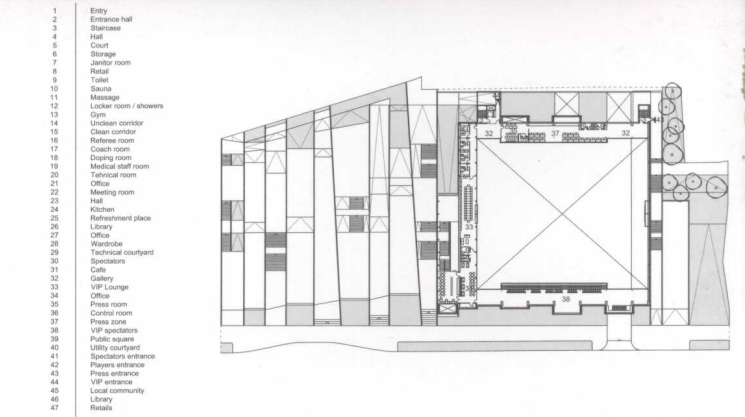
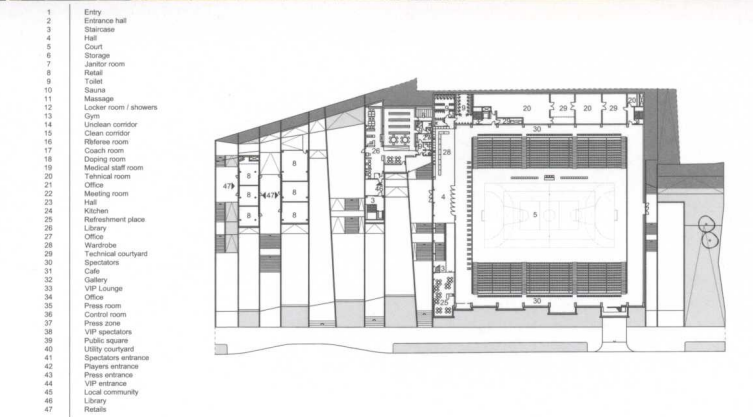
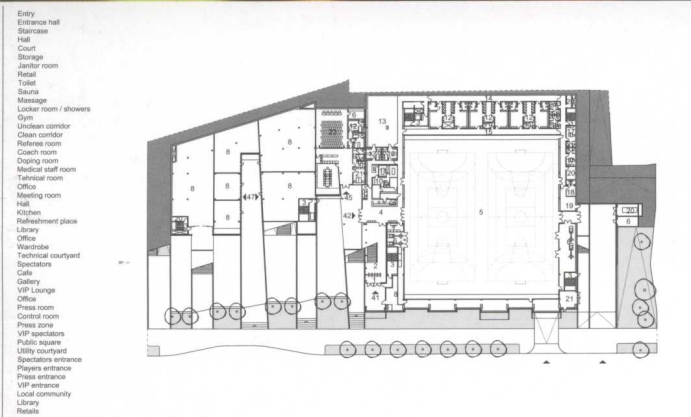
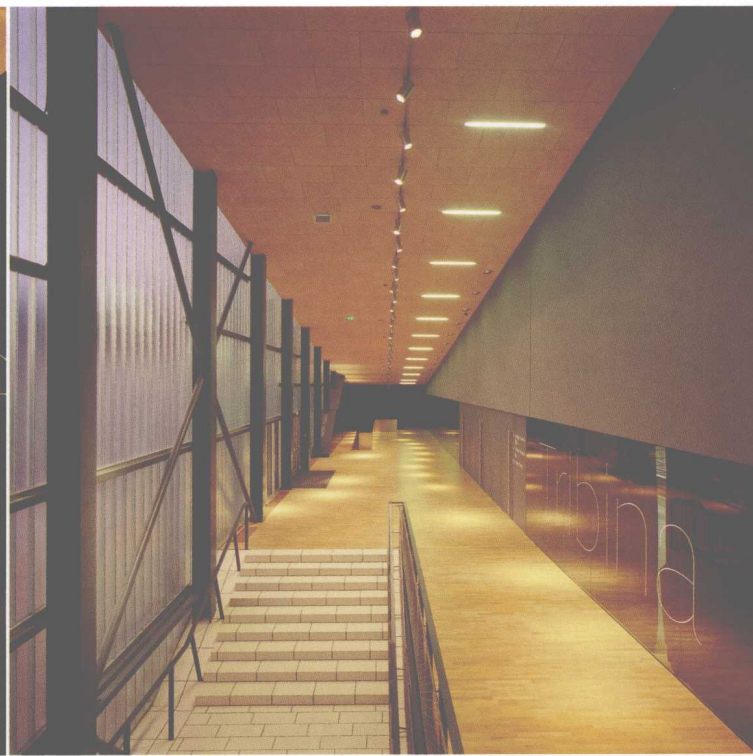
10 floor construction

cast floor - polyurethane	3 mm
screed	65 mm
separating layer	0.2 mm
expanded polystyrene impact-sound insulation EPS	40 mm
elastic expanded polystyrene EPS-T	20 mm
reinforced concrete slab	300 mm
mineral wool thermal insulation	120 mm
plaster	2 mm

12 U-profiled glass - double glazing in aluminium frame

	83mm
--	------

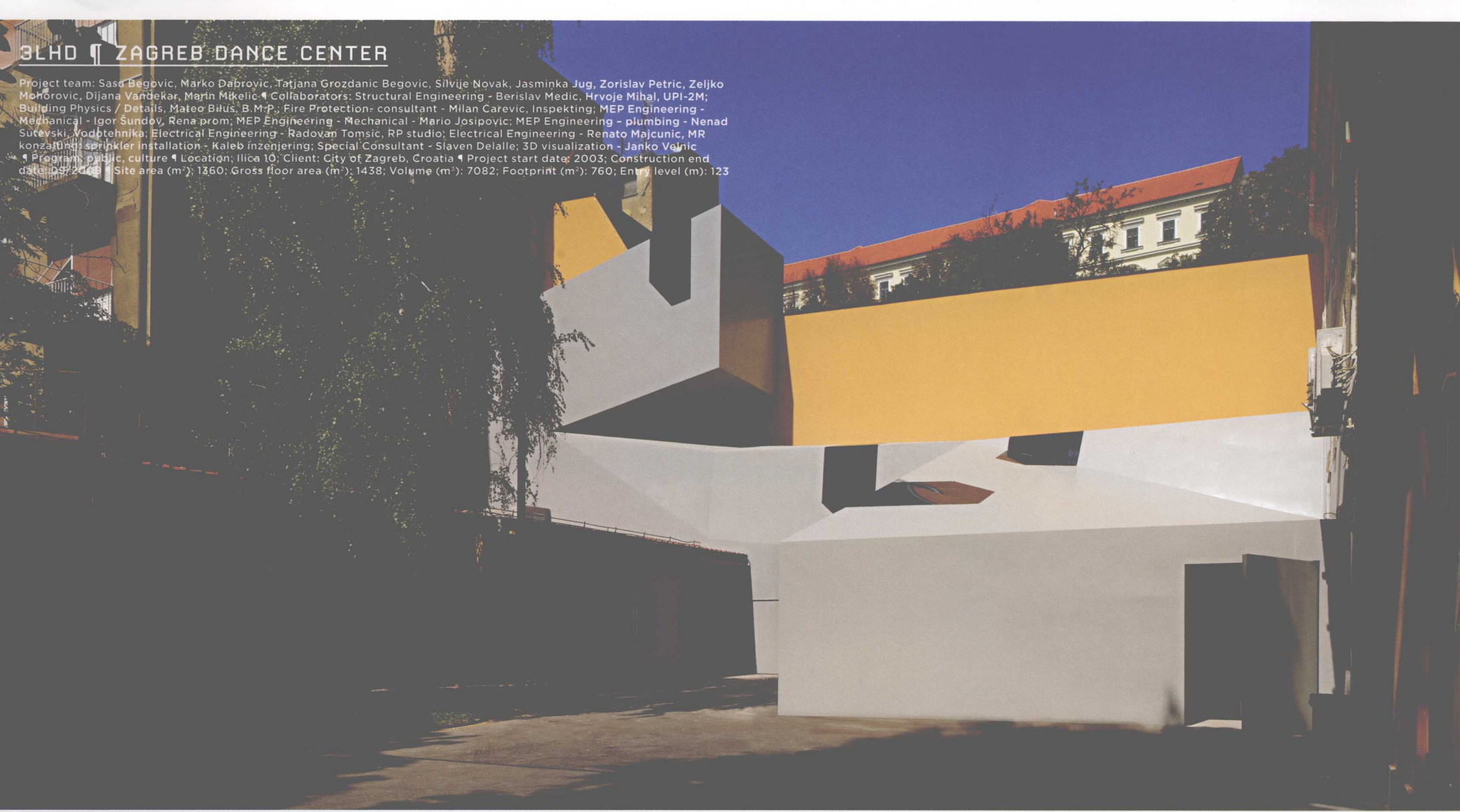


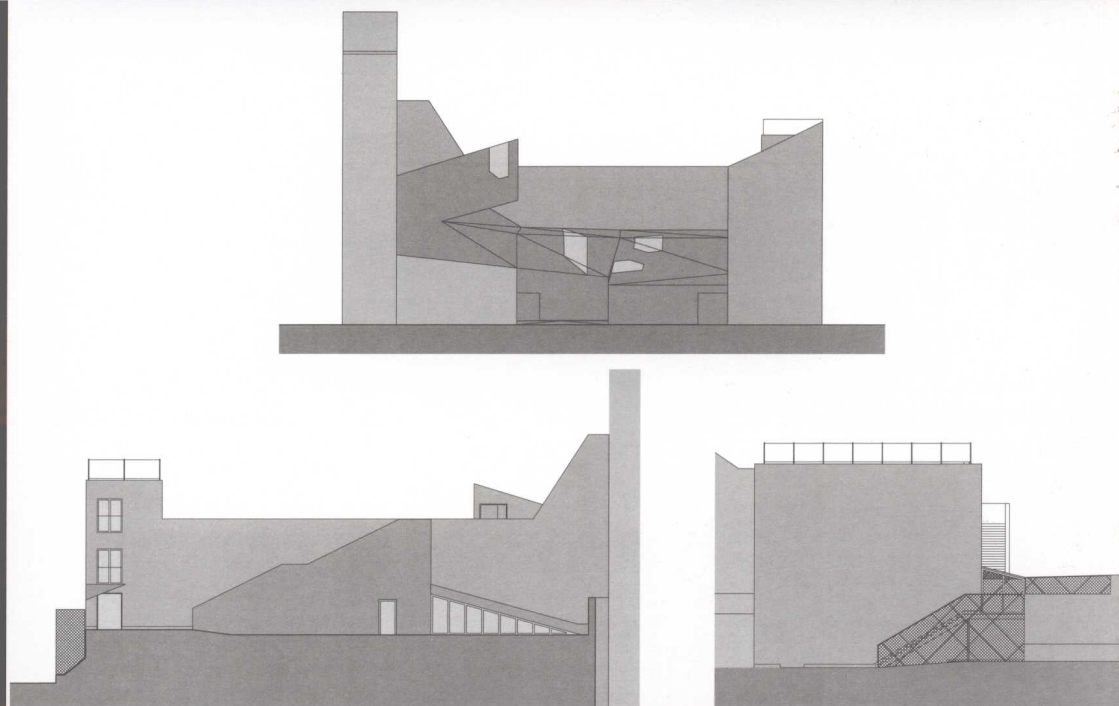
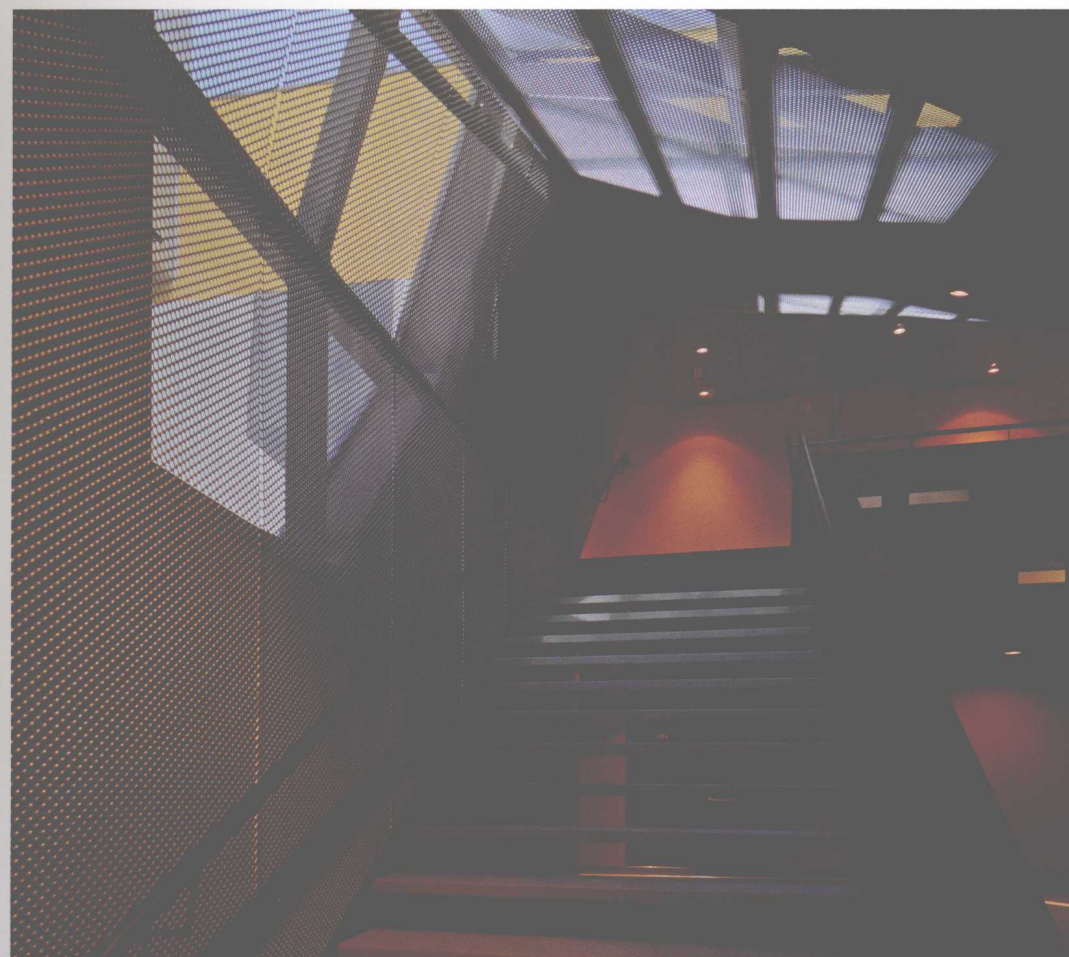
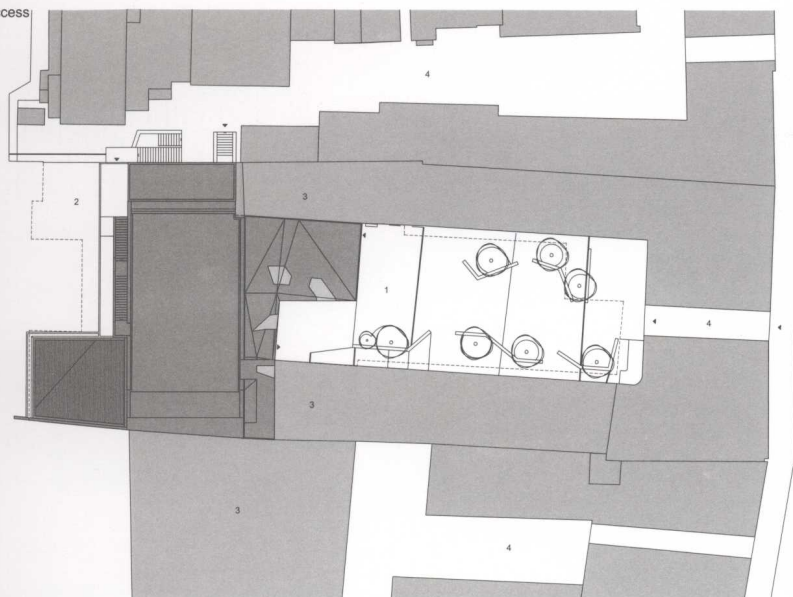




BLHD | ZAGREB DANCE CENTER

Project team: Sasa Begovic, Marko Dabrovic, Tatjana Grozdanic Begovic, Silvije Novak, Jasminka Jug, Zorislav Petric, Zeljko Mehrovic, Dijana Vandekar, Marin Mikelic. Collaborators: Structural Engineering - Berislav Medic, Hrvoje Mihal, UPI-2M; Building Physics / Details, Mateo Bilus, B.M.P.; Fire Protection- consultant - Milan Carevic, Inspeking; MEP Engineering - Mechanical - Igor Sundov, Rena.prom; MEP Engineering - Mechanical - Mario Josipovic; MEP Engineering - plumbing - Nenad Sutevski, Vodotehnika; Electrical Engineering - Radovan Tomic, RP studio; Electrical Engineering - Renato Majcunic, MR konzalting; sprinkler installation - Kaleb inzenjering; Special Consultant - Slaven Delalle; 3D visualization - Janko Velnic. Program: public, culture. Location: Ilica 10; Client: City of Zagreb, Croatia. Project start date: 2003; Construction end date: 05/2008. Site area (m²): 1360; Gross floor area (m²): 1438; Volume (m³): 7082; Footprint (m²): 760; Entry level (m): 123



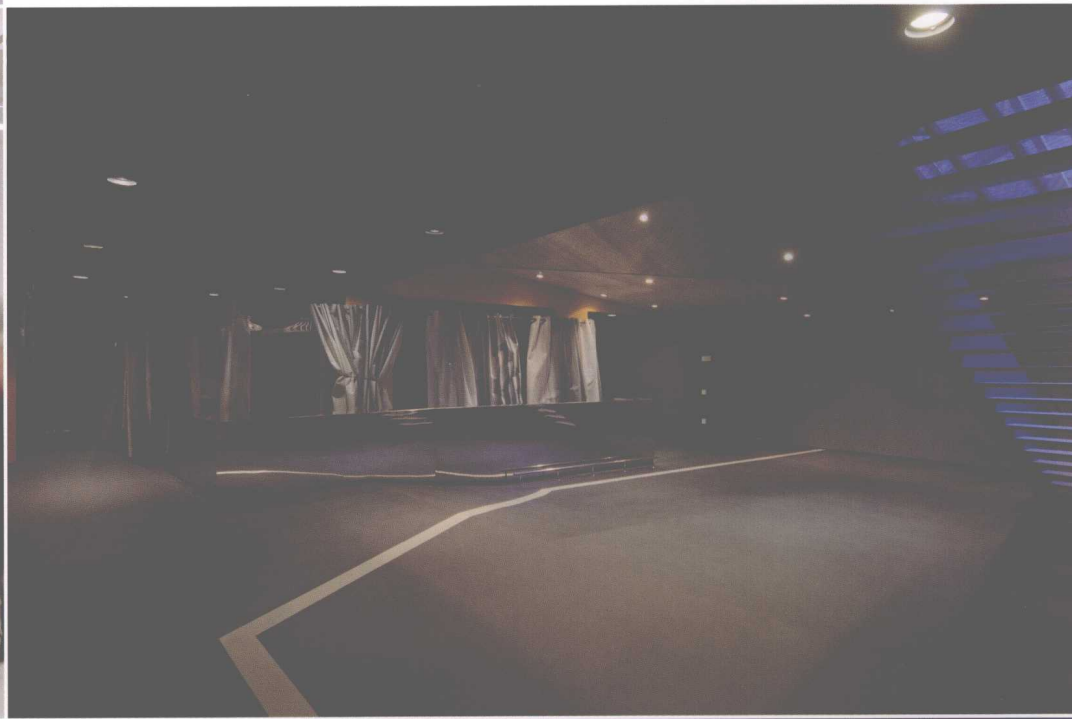
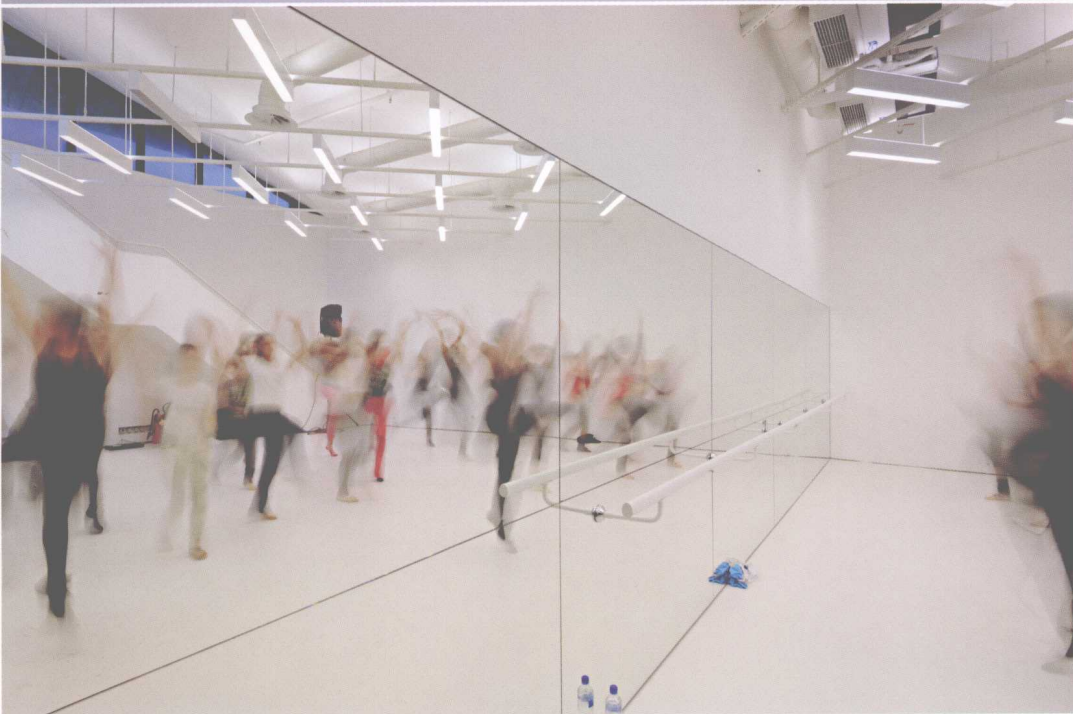
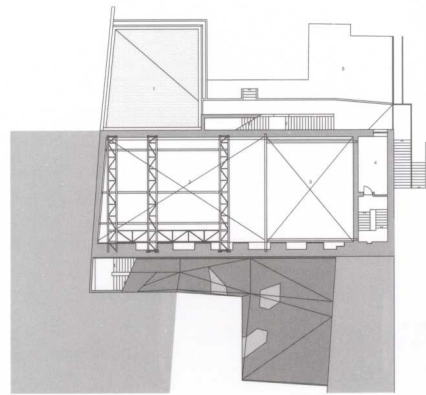
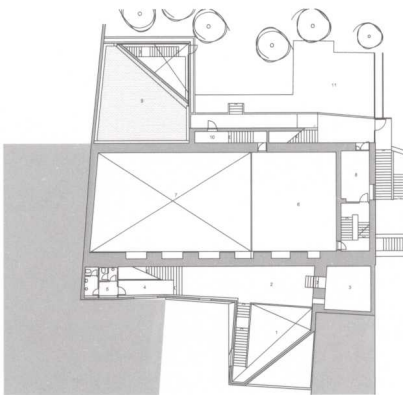


The opening of big movieplex cinemas in Zagreb has led to the dying out of old cinema theatres in the city centre. The City of Zagreb, who is the owner of the old cinema Lika, decided to reuse the space for new cultural facilities. In that scenario old cinema Lika was given the role of a new dance centre. Fifty years of contemporary dance culture in Zagreb has produced about 40 dance troops, with this project all of them will have a new home in the city centre. The cinema is located in a derelict residential block only 100 meters away from the Zagreb's main square. The entire project's program is determined by the gross developed area defined in the master plan and it places the project in the old cinema shell. The new dance centre which will house numerous dancers, choreographers, art troops and companies will have three multipurpose studios (one large studio with 150 telescopic seats and two smaller training studios), three spacious dressing rooms, bathrooms, storages for props and technology and office spaces. The only new architectural element of the centre is the new entrance lobby, a polyvalent space in the service of communication and meeting with a cafe, library and a video store. It was interpolated on the basis of almost default parameters of the existing neighbouring houses. The volume and its broken also form suggest dance movement and they are a new sign and connection element between the courtyard and the roof terrace. The roof terrace is the final element of the centre and an important part of the project of preservation and restoration of Zagreb last open roof stage.

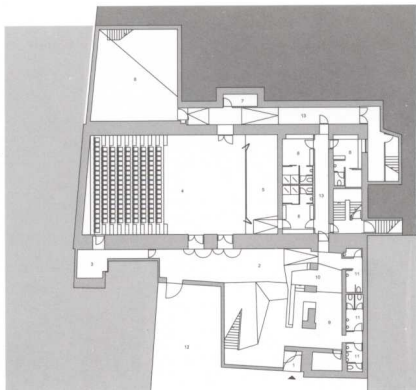




- 1 Lobby
- 2 Gallery
- 3 Media Library
- 4 Hall
- 5 Sanitary facilities
- 6 Studio 2
- 7 Studio 1
- 8 Office
- 9 Green roof
- 10 Exit
- 11 Garden



- 1 Main entrance
- 2 Entrance lobby
- 3 Storage
- 4 Studio 1
- 5 Storage
- 6 Studio 3
- 7 Storage
- 8 Dressing room
- 9 Canteen
- 10 Ticket/Wardrobe
- 11 Toilets for visitors
- 12 Entrance court
- 13 Service corridor



- 1 Green roof
- 2 Summer terrace "Kino Lika"
- 3 Stage
- 4 Boiler room
- 5 Cinema operator
- 6 Engine
- 7 Entrance / Exit
- 8 Exit

