

Educational Facilities 教育建

Compiled by PACE Publishing Limited Edited by Bernard Chan
贝思出版有限公司汇编 陈晋略 主编

建築巨匠一頁

[illegible]

Hundred Outstanding Architects

图书在版编目(CIP)数据

教育建筑/贝思出版有限公司 汇编, 陈晋略 主编. —沈阳:
辽宁科学技术出版社, 2002.9
(建筑巨匠一百)
ISBN 7-5381-3737-8

I.教... II.①贝...②陈... III.教育建筑-建筑设计-世界-
图集 IV.TU244-64

中国版本图书馆CIP数据核字(2002)第059914号

出 版 者: 辽宁科学技术出版社
(地址: 沈阳市和平区十一纬路25号 邮编: 110003)
印 刷 者: 广州市天盛印刷有限公司
发 行 者: 各地新华书店
开 本: 635mm × 965mm 1/8
字 数: 40千字
印 张: 14
插 页: 4
印 数: 1~3000册
出版时间: 2002年9月第1版
印刷时间: 2002年9月第1次印刷
责任编辑: 符 宁 郭 健
特邀编辑: 关 鸣
版式设计: 伍 韩
责任校对: 王春茹

定 价: 200.00元

联系电话: 024-23284360
邮购咨询电话: 024-23284502
E-mail: lkzxb@mail.lnpgc.com.cn
<http://www.lnkj.com.cn>

Hundred Outstanding Architects
建筑巨匠一百

Edited by Bernard Chan

陈晋略主编

Compiled by PACE Publishing Limited

贝思出版有限公司汇编

Hundred Outstanding Architects

A series of 'X Volumes of Architecture' of which each volume is dedicated to one building type, such as Dream Houses, Housing, Educational Facilities, Libraries, Athletic Facilities, Gateways, Commercial Buildings, Hotels, Museums and Theatres. A comprehensive selection of projects are chosen represented by well over 100 most distinguished architectural firms worldwide reflecting the pluralism of architecture.

建筑巨匠一百

《建筑巨匠一百》系列丛书共10册，按照建筑物的类型分类，分别为：别墅建筑、住宅建筑、教育建筑、图书馆、体育建筑、客运大楼、商业建筑、酒店、博物馆和歌舞剧院，汇集了从100多家世界上最著名的建筑师事务所挑选出来的多元化的建筑作品。

Educational Facilities 教育建筑

Hundred Outstanding Architects
建筑巨匠一百

辽宁科学技术出版社
Liaoning Science and Technology Publishing House

Preface

序

Educational buildings serve as a place for one to acquire knowledge. From kindergartens to universities, within the boundaries of these buildings they create a world of their kind - a setting designed for collective learning, discussion and recreation.

Within this microcosm, a place encompassing a collection of faculties scattered and spread across the campus or in some cases stacked vertically on top of each other. Circulation plays a very significant role acting not just as a means of accessing from one place to another, but operates way beyond this basic mode. Circulation space provides areas for students and teachers to meet, communicate and pause for short talks. There is a constant flow of movements within these establishments; it is like the web of knowledge, interlinking faculties, places of recreation and so on. Circulation routes are the main arteries of the ensemble of buildings.

Elements such as ramps, stairs, lifts are employed for these circulation routes coupled with gardens, squares, courtyards, halls, vertical voids alike that are often introduced at various intersections as a spatial relief as well as providing meeting points and gathering spaces.

These institutions, by nature are a series of individual buildings grouped together. However harmony and cohesion is generally achieved by the design with relative restrained monumental scale and yet carried a sense of dignity. These places offer a place of calmness and serenity for ones to learn, between oneself and others, discover oneself and others and more importantly knowledge.

Bernard Chan

教育建筑一直是人们获取知识的殿堂,由幼儿园至大学,人们在教育机构里面创造了一个独特的世界,供大家聚集在一起学习、研讨或是消遣娱乐。

在教育的微观世界里,各个学科体系分散在校园各处,其中通道扮演一个非常重要的角色,它不仅仅是起着过渡和通道的基本作用,更提供了学生与老师见面、交谈和沟通的空间。不断的人潮流动好像现在的知识网络、互联系统、康乐场所等,通道走廊就成为一组建筑的主要命脉。

斜坡、楼梯、电梯等元素常常运用在通道途径的构成上,和花园、广场、院落、礼堂、空旷地区等随处可见的场所相互配合,营造了人们聚集活动、主题讨论等交流活动的空间。

学术机构本来就是多个独立建筑的有机组合,而要带出组合的和谐美感主要来自严谨、细致的场馆式设计,同时建筑中蕴涵着尊贵气息。教育建筑场所都力求创造出让人静思的静谧空间,供人求知、相互学习、探究自我或群体,更可供人挖掘深层次学问。

陈晋略

Table of Contents

目录

4	Preface 序	70	Henri Gaudin Architecte DPLG Ecole Normale Supérieure 亨瑞·高丁建筑师事务所 高等师范学校
8	Behnisch, Behnisch & Partners Saint-Benno Catholic Secondary School 本尼许, 本尼许与合作者建筑师事务所 圣贝诺天主教中学	82	gmp - Architekten von Gerkan, Marg und Partner German School 冯·格康, 玛格与合作者建筑师事务所 德国学校
18	Edward Cullinan Architects University of East London Docklands Campus 爱德华德·库林南建筑师事务所 东伦敦大学港区校园	92	Gwathmey Siegel & Associates Architects James S. McDonnell Hall of Physics 格沃斯梅与西格尔联合建筑师事务所 詹姆斯·S·麦克唐奈物理楼
30	Eisenman Architects Aronoff Center for Design and Art 艾森曼建筑师事务所 阿罗诺夫设计艺术中心	100	Hiroshi Hara + Atelier Hiroshima Motomachi High School 原宏司工作室 广岛 Motomachi 高级中学
44	EMBT Associated Architects Music School EMBT 联合建筑师事务所 音乐学校	108	Hans Hollein Architekt Public Primary School Donaueity 汉斯·霍莱恩建筑师事务所 多瑙城公立小学
60	Terry Farrell + Partners International Centre for Life (ICL) 泰瑞·法瑞尔与合作者建筑师事务所 国际生命中心	116	Kengo Kuma & Associates Sakushin Gakuin University 隈研吾建筑师事务所 作新学院大学

- | | |
|--|---|
| <p>124 Kisho Kurokawa Architect & Associates
Aomori University of Health and Welfare
黑川纪章建筑师事务所
青森健康福利大学</p> <p>134 Legorreta + Legotteta Arquitectos
The College of Santa Fe of Visual Arts Center
理格瑞塔 + 理格瑞塔建筑师事务所
圣达菲学院视觉艺术中心</p> <p>142 Meili Peter Architekten
Swiss School of Engineering for the Wood Industry
梅利与彼得建筑师事务所
瑞士木业工程学校</p> <p>150 Morphosis
International Elementary School
莫费西斯建筑师事务所
国际小学</p> <p>162 Neutelings Riedijk Architecten
University Building 'Minnaert'
纽太令斯与瑞迪克建筑师事务所
大学建筑“Minnaert”大楼</p> <p>174 OMA/Rem Koolhaas
Educatorium
OMA / 雷姆·库哈斯建筑师事务所
教育馆</p> | <p>184 Pei Cobb Freed & Partners
Science and Engineering Quadrangle
贝，考博，佛瑞德与合作者建筑师事务所
科学与工程方庭大楼</p> <p>192 Peter Pran / Ellerbe Becket
State University of New York at Binghamton
皮特·普瑞恩与埃乐比·比克建筑师事务所
纽约州立大学宾汉顿分校</p> <p>200 Robert A.M. Stern Architects
Smith Campus Centre, Pomona College
罗伯特·A·M·斯特恩建筑师事务所
波莫纳学院史密斯校园中心</p> <p>208 Bernard Tschumi Architects
School of Architecture at Marne-la-Vallee
伯纳德·屈米建筑师事务所
玛那拉法莱建筑学院</p> <p>216 Venturi, Scott Brown & Associates, Inc.
Gonda Neuroscience & Genetics Research Center
文丘里与斯科特·布朗建筑师事务所
贡达神经学及遗传学研究中心</p> <p>222 Acknowledgements
致谢</p> |
|--|---|



Saint-Benno Catholic Secondary School

圣贝诺天主教中学

Dresden,
Germany

Completion Date: 1996

Built Area: 10771 m²

德国德累斯顿

竣工时间：1996年

建筑面积：10771平方米

The appearance of emerging buildings is influenced by a variety of components. These components come from all areas of reality. The multitude of contributing factors makes for a multi-faceted colourful play.

To begin with, there was the location, a long and shallow site, not far away from the city center. Certainly this provided an interesting place for the new building to fit within the pattern of the city. But it also had serious shortcomings with heavy traffic at the junction of two major streets.

Within this environment the new St. Benno building emerged taking its form, its huge wall shielding classrooms from noise. The classrooms themselves turn away from the din of the streets, opening towards the west.

The residual spaces between the groups of classrooms gave the opportunity to create a particularly attractive design. The hallways on the entrance level and the main hall are exaggerated, given the very small free spaces on ground floor level, due to the narrow site.

The colours and the shape of the plan were developed in response to the conditions of the site. The building as it is now can set itself off from the stereotype elements of socialist town planning. Free from such constraints, the building is now able to respond with more sensitivity to the desires, requirements and even ideals, often neglected where ideology is a dominant and therefore limiting factor.

The new building of the St. Benno is a child of its time bringing architecture and, hopefully, life to the town.

有很多因素会对建筑设计造成影响，它们来自于各个方面。建筑物当然必须达到某种质量标准，满足各种不同的需要，使用者的习惯和愿望也会造成各种实际的局限。此外，恐惧、理想、观念等心理因素也会起作用。多层面、多样性的因素会导致多层面、多样性的结果，但是我们几乎从不注意到这一点。

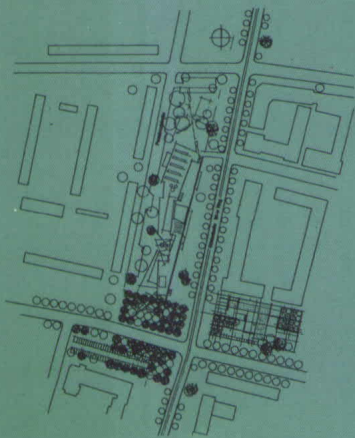
该项目位于市中心不远处，场地呈狭长形。应该说这在城市中是一块建造新楼的好地块，但是它还是存在一些严重的缺点——这是两条主要街道的交汇处，交通十分繁忙。

圣贝诺天主教中学的新大楼就出现在这样的环境中。为了避免来自街道的噪音干扰，它采用巨大的墙壁将教室保护起来，同时将教室面向西面布置。

在成组的教室之间残留的空间增添了设计的趣味性。位于入口层的走廊和主大厅空间较大，而位于地面层的自由空间则由于地盘狭窄而显得非常小。

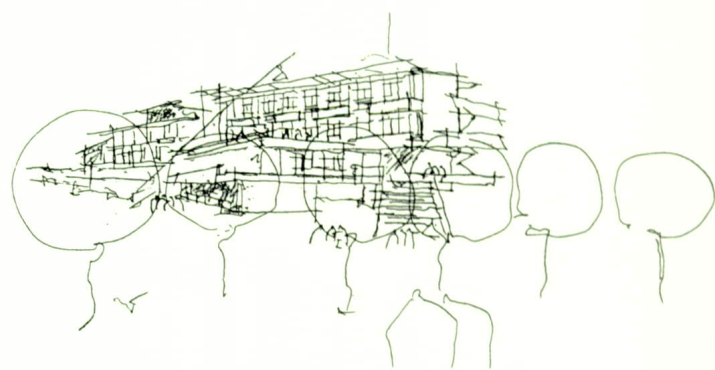
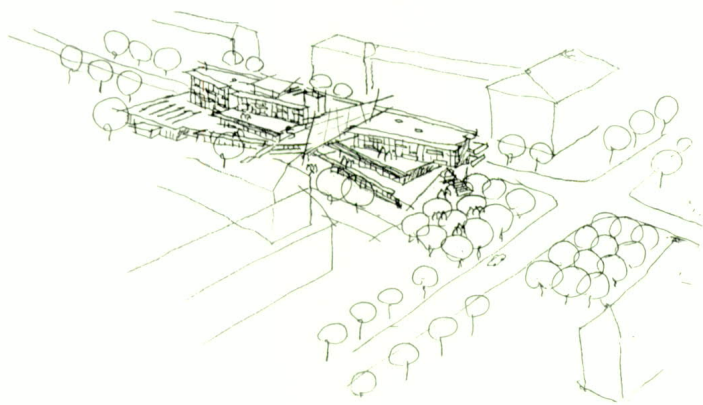
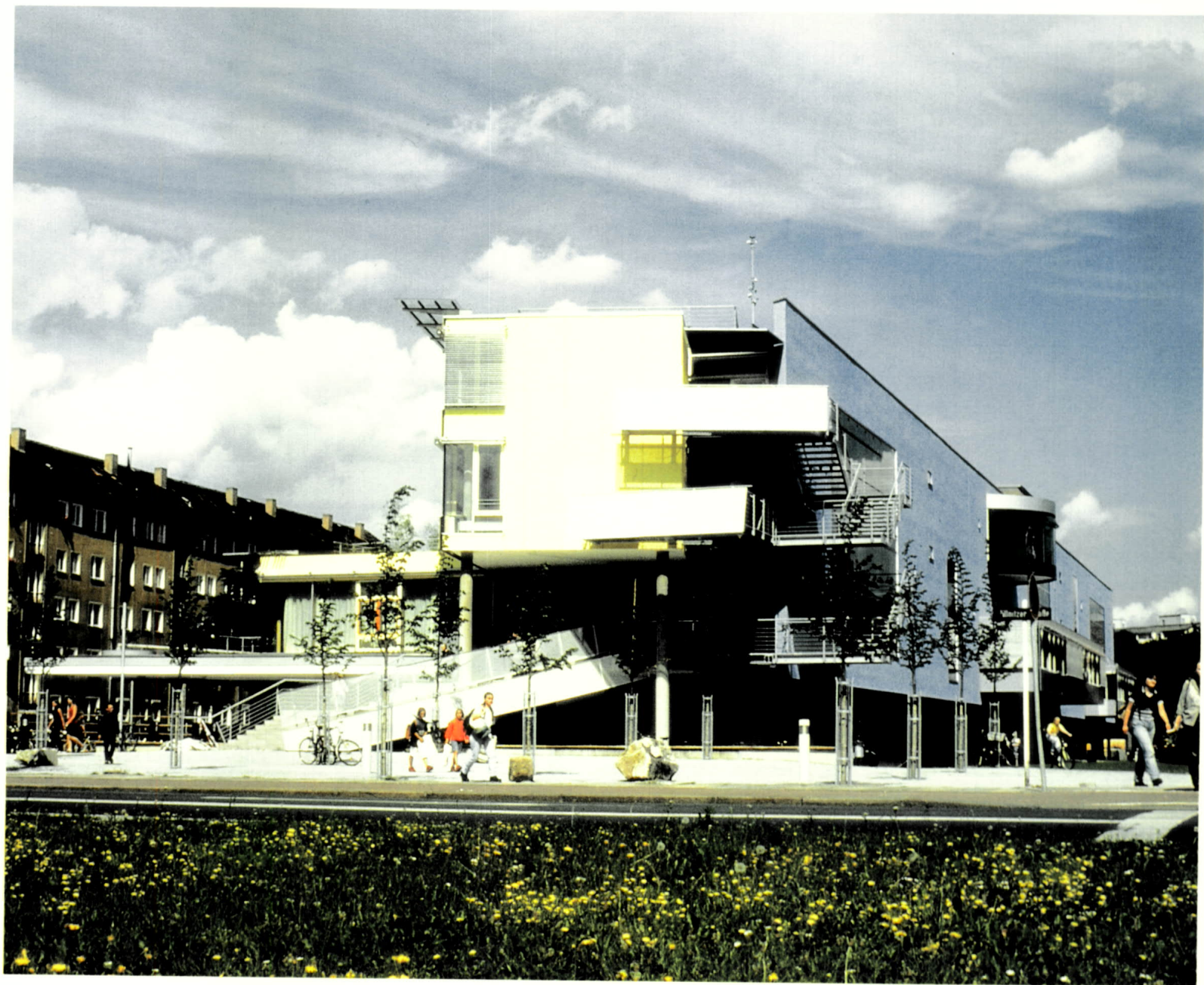
大楼的色彩与造型呼应了场地周围的环境。它摆脱了老套的城市规划窠臼，因而更能反映人们的愿望、要求、甚至理想——而这在意识形态主导一切的社会中常常会遭到忽视。

圣贝诺体育馆新楼是这个时代的产物，也是赋予建筑和城市以生命的希望所在。

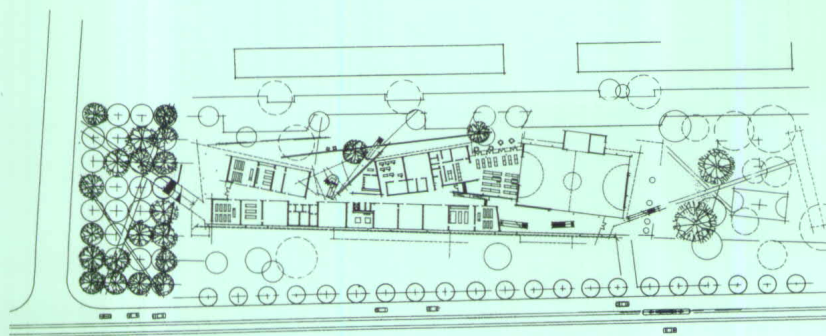


Site Plan

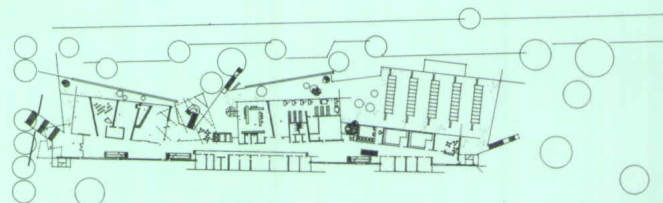
场地平面图



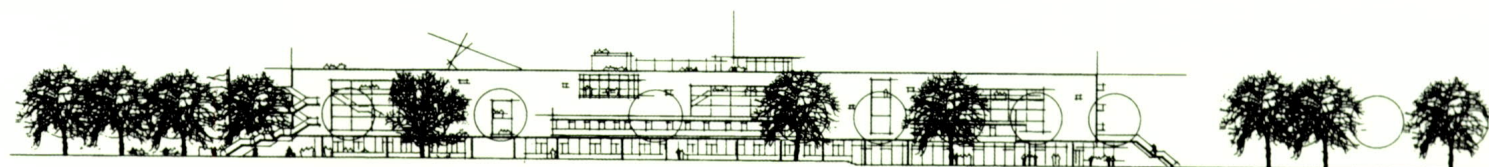
Sketch Perspectives
透视草图



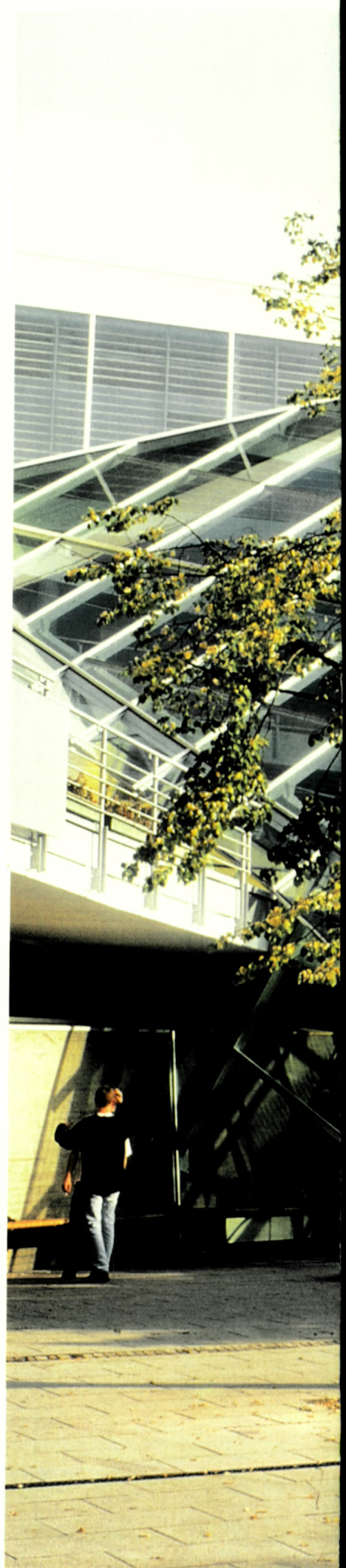
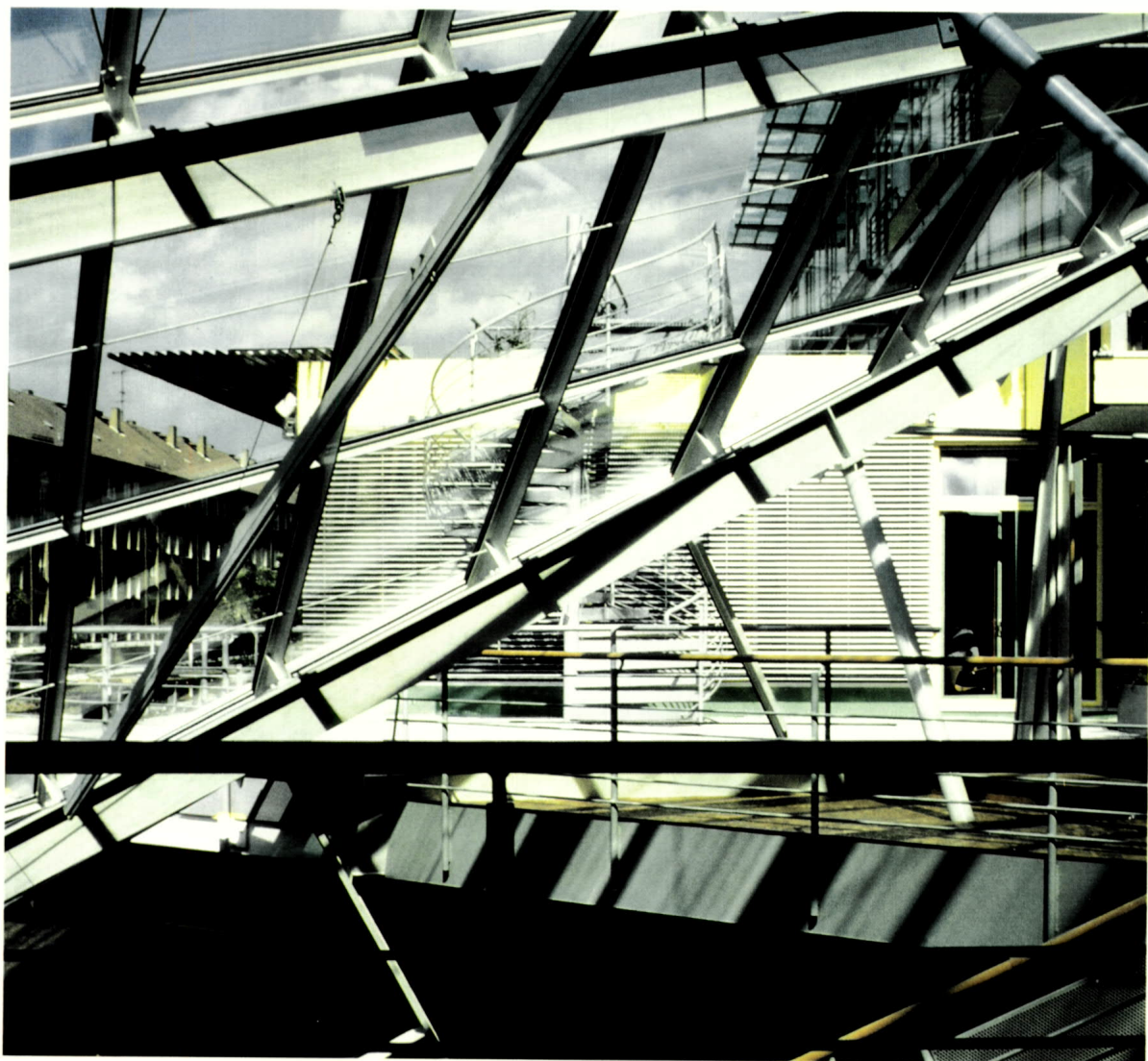
Ground Level Plan
底层平面图



Level 1 Plan
2层平面图







West Elevation
西立面图

