

SmithGroup 2

史密斯建筑事务所

1853-2002

TU206

46

:2

Group

*Ann Arbor
Chicago
Detroit
Los Angeles
Madison
Phoenix
Reston
San Francisco
Shanghai
Washington DC*

北方工业大学图书馆



00525054

TU206

46

:2

Group

*Ann Arbor
Chicago
Detroit
Los Angeles
Madison
Phoenix
Reston
San Francisco
Shanghai
Washington DC*

北方工业大学图书馆



00525054

HEALTHCARE RESEARCH

医疗研究

Cal State Moss Landing Research Facility – Lab/Research

加州苔藓地研究机构——实验室/研究中心

Detroit Medical Center Karmanos Cancer Institute

底特律卡莫罗斯癌症研究中心

Fauquier Hospital

费圭尔医院

Kaiser Permanente Los Angeles Medical Center

凯撒·帕梅尼特洛杉矶医疗中心

Metropolitan Water District Office, Laboratory and Conference Facility – Lab/Research

大都会水城水质实验室——实验室/研究中心

Children's Hospital of Pittsburgh/University of Pittsburgh Medical Center (UPMC Health System)

匹兹堡儿童医院/匹兹堡大学医疗中心

Providence Holy Cross (North Medical Office Bldg. Replacement)

神旨圣十字（北部医学办公楼改建工程）

Shuguang Hospital

曙光医院

Stark Villa Assisted Living (Motion Picture Retirement Fund)

斯达克别墅（剧情片退休基金会）

St. Jude Children's Research Hospital Integrated Research Center

圣乔迪儿童研究中心

UCSF Mt. Zion Outpatient Cancer Center

蒙特基督教会癌症研究中心

Womack Army Medical Center

霍梅克军队医疗中心



CAL STATE MOSS LANDING RESEARCH FACILITY-LAB/RESEARCH

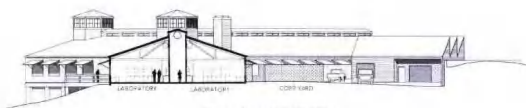
加州苔藓地研究机构 - 实验室 / 研究中心

太平洋沿岸陡峭的悬崖向 5,574 平方米的海洋科学研究及教学机构的设计在基地上和体量上提出了挑战。最终的设计方案不仅包括行政场所、教室和专门的实验室，还特别注重表现海滨田园风光。

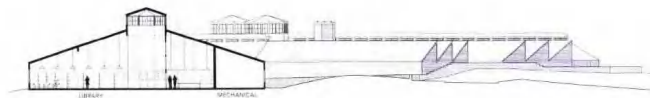
A sloping bluff overlooking the Pacific Ocean presented a challenge in siting and massing for a new 60,000-square-foot marine sciences research and teaching facility. The resulting design solution sensitively expresses the rustic, coastal environment while providing administrative space, academic classrooms and specialized laboratories for University-based research programs. The facility includes a central campus library, presentation room, visitor's center, and collection storage/museum space.

The marine labs require specialized systems to maintain live animals and clean areas to prevent contamination of samples. To accomplish this, an innovative system was designed to collect and distribute seawater to aquaria, labs and support areas. Adaptable modular laboratories provide the flexibility needed for changing research programs. Common areas and landscaped courtyards foster interaction between researchers and students. Vistas of the ocean from both labs and offices help to enhance the quality of the research environment.





Section A - Looking Northeast



Section B - Looking North



Section C - Looking Southeast









此为试读, 需要完整PDF请访问: www.ertongboo.com

DETROIT MEDICAL CENTER KARMANOS CANCER INSTITUTE

底特律卡莫罗斯癌症研究中心



新机构的规划充分展示了分期实施的可行性，将原 60 年代及 70 年代设计的哈帕医院从目前主要的住院功能转向为一个预防、检测、治疗癌症的特别护理中心。

The Karmanos Cancer Institute was formed in 1994 through a merger of the Michigan Cancer Foundation, Meyer L. Prentis Comprehensive Cancer Center of Metropolitan Detroit, Detroit Medical Center and Wayne State University. The facility's planning represents a phased approach in converting a portion of Harper Hospital, designed in the 1960s and 1970s, from its current inpatient focus into an innovative, specialty care center for the detection, treatment and prevention of cancer.

Phase I, the Vic and Lucille Wertz Clinical Cancer Center, is a one-story renovation of existing hospital space. It incorporates a business office, education and prediagnostic facilities with clinical space for hematology/oncology examinations and chemotherapy. A distinctive new covered drop off and lobby is the entry point for all oncology clients.

Phase II, of the clinical cancer center consists of two parts: a two-story addition and a future renovation of an existing nursing tower floor for faculty offices. The addition includes modular hematology/oncology and multi-specialty clinics on the first floor and cancer center administrative offices on the second floor. An atrium contains waiting spaces and a bridge connection between the faculty and administrative office suites. Phase I and II of this project consist of approximately 5,850 square meters of clinical space and 3,150 square meters of office areas.

Phase III, the Hudson-Webber Cancer Research Center, is a five-story, 7,400-square-meter vertical expansion above Phase II. It contains fifty 65-square-meter research laboratory modules with support space and research offices. The generic lab modules are designed to provide flexibility for fast-paced emerging technologies in biomedical cancer research. A redesignation of medical/surgical nursing units to specialized oncology nursing units is planned to coincide with this phase.







FAUQUIER HOSPITAL

费圭尔医院

此项目包括 13,000 平方米的新建设施和现有 5,950 平方米设施的改建。新的设计给人一种家的感觉并充分考虑到了维护病人的尊严。

Fauquier Hospital is a not-for-profit, 86-bed acute care hospital serving four counties. In September 1999, Fauquier Hospital retained SmithGroup to design a hospital-wide renovation and addition to expand and update its facilities in order to meet the healthcare needs of its growing community. The project comprises 13,000 square meters of new construction as well as the renovation of 5,950 existing square meters. The project will expand emergency and outpatient services, radiology, in-patient and outpatient cardiology, and medical records. The existing second-floor, double patient rooms will be converted to single rooms, designed to create privacy, comfort and quiet. A new Community Resource and Education Center will provide classrooms, training rooms and a health resource library to support the hospital's community outreach and education activities. Finally, a new 24-hour dining facility will be added to accommodate the dining needs for both visitors and employees.

Fauquier Hospital is a Planetree-affiliated hospital and the facility changes designed by SmithGroup employ Planetree concepts to create a holistic, patient-centered care model. The new design is homelike and non-institutional, and incorporates efficient layouts that support patient dignity. Architectural barriers that inhibit patient control and privacy as well as interfere with family participation are removed. Spaces for both solitude and social activities are provided, including libraries, patient and family kitchen and dining facilities, lounges, activity rooms, and a new chapel. Patient rooms are equipped with built-in beds for family members to spend the night in support of the patient. Skylights and clerestories bring in natural light wherever possible.

