

246351

基本乐理

# 琵琶曲谱

(《琵琶演奏法》辅助材料)

林石城编

452  
14

音乐出版社



216

統一書號:8026·1162

定價 0.70 元

246351

S 6352  
11-14

# 琵琶曲譜

(《琵琶演奏法》輔助材料)

林石城編

音樂出版社

北京

**琵琶曲**

林石城編

音乐出版社出版(北京和平門外西琉璃厂170号)

北京市书刊出版业营业許可証出字第063号

新华书店总經售

\*

787×1092 耗 16开 4 1/4印张 65面乐譜

1959年6月北京第1版

1959年6月北京第1次印刷

印数: 0,001-4,590册

統一书号: 8026·1162 定价0.70元

# 目 次

1. 老六板(一) . . . . .	1	19. 夜深沉 . . . . .	24
2. 老六板(二) . . . . .	1	20. 朝元歌 . . . . .	25
3. 老花六板 . . . . .	2	21. 鷓鴣飞 . . . . .	26
4. 花六板 . . . . .	3	22. 老六板(三) . . . . .	27
5. 西洛詩 . . . . .	4	23. 灯月交輝 . . . . .	34
6. 上雀桥 . . . . .	6	24. 蕉石鳴琴 . . . . .	35
7. 小扬州 . . . . .	8	25. 秋 思 . . . . .	36
8. 九連环 . . . . .	10	26. 粧台秋思 . . . . .	37
9. 挽不断 . . . . .	10	27. 三潭印月 . . . . .	38
10. 原板三六 . . . . .	11	28. 倒騎馱 . . . . .	39
11. 云 庆 . . . . .	14	29. 弹詞过門片段 . . . . .	42
12. 出水蓮 . . . . .	16	30. 凡忘工 . . . . .	44
13. 翠湖春晓 . . . . .	17	31. 青春之舞 . . . . .	46
14. 怀 歌 . . . . .	18	32. 旱天雷 . . . . .	50
15. 雨打芭蕉 . . . . .	20	33. 六 板 . . . . .	51
16. 步步高 . . . . .	21	34. 春光好 . . . . .	57
17. 一枝梅 . . . . .	22	35. 龙 船 . . . . .	60
18. 香篆曲 . . . . .	23		

# 老六板 (一)

民間乐曲 林石城訂譜

♩-104

Musical score for '老六板 (一)' in G major, 2/4 time. The score consists of five staves of music. Fingerings are indicated by numbers 1-3. Some notes have accents (^) or slurs. Roman numerals I, II, and III are used to denote positions or chords. The piece ends with a double bar line and repeat dots.

运用指法: (1)左手——按音。(2)右手——弹、挑、双弹、分。  
 注意: (1)换把时按指顺序。(2)弹挑时用力方法。

# 老六板 (二)

民間乐曲 曹安和訂譜

Musical score for '老六板 (二)' in G major, 2/4 time. The score consists of five staves of music. Roman numerals I and II are used to denote positions. The piece ends with a double bar line and repeat dots.

附注: (1)本曲于乐句顿挫处, 尽量利用双分。(2)另一种通行版本无[ ]中的四小节曲调。

## 老花六板

民間乐曲 林石城改編

♩ = 72

♩ = 60-52

通用指法: (1)左手——按音。(2)右手——弹、挑、双弹。

注意: (1)换把时按指指序。(2)空弦散音。

## 花 六 板

民間乐曲 曹安和改編

The musical score for 'Hua Liu Ban' is written in G major and 2/4 time. It consists of ten staves of music. The first nine staves are in treble clef, and the tenth is in bass clef. The music features various rhythmic patterns, including eighth and sixteenth notes, and rests. Fingerings are indicated by numbers 1-4. Dynamic markings like 'p' and 'f' are present. Performance techniques are indicated by Roman numerals I, II, III and circled numbers (1), (2), (3), (4).

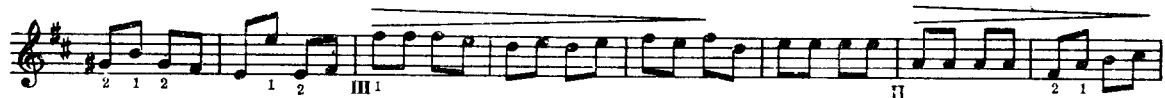
运用指法：(1)左手——按音。(2)右手——弹、挑、双弹、分。







第一遍 ♩ = 96 → 反覆后第二遍 ♩ = 126 →



运用指法: (1)左手——按音。(2)右手——食指起板的弹挑和夹弹;大指起板的挑弹。

注意: (1)按音位。(2)左右手合作。

说明: 本曲可供合奏用。



运用指法：(1)左手——按管。(2)右手——弹、挑、划、拂、半轮、双弹。

注意：(1)弹挑和划拂的起板。(2)划拂的运用。

说明：本曲原为笛子曲调，亦可用米合奏。内容活泼生动、此起彼伏，别具一种风调。今订成琵琶谱，作为复习划拂之用。

# 小揚州

潮州民間樂曲 林石城訂譜

[1] 花板  $\text{♩} = 72$

The musical score for '小揚州' is presented in ten staves of music. The notation includes treble clefs, a key signature of one sharp (F#), and a tempo marking of quarter note = 72. The score is heavily annotated with fingerings (numbers 1-5) and ornaments (asterisks with horizontal lines). Roman numerals (I, II, III) are used to denote specific fingering techniques or positions. The music features a variety of rhythmic patterns, including eighth and sixteenth notes, and rests. The overall style is characteristic of traditional Chinese music transcribed for Western instruments.

[2]原板(过街溜) 此段共反复三遍,第一遍♩=76,第二遍♩=88,第三遍♩=100

Musical score for 'Original Plate (Over Street Linger)'. It consists of three staves of music. The first staff has a tempo of 76, the second 88, and the third 100. The music is in 2/4 time and features a melody with various ornaments and fingerings. Fingerings are indicated by numbers 1, 2, 3, 4 and Roman numerals I, II. Dynamic markings include *p* and *pp*. There are also 'K' and 'X' symbols above the staff.

[3]插花(过家溜) ♩=104

Musical score for 'Floral Insertion (Over Family Linger)'. It consists of six staves of music. The tempo is 104. The music is in 2/4 time and features a melody with various ornaments and fingerings. Fingerings are indicated by numbers 1, 2, 3, 4 and Roman numerals I, II. Dynamic markings include *p* and *pp*. There are also 'V' and 'X' symbols above the staff.

[4]收尾 ♩=100 →

Musical score for 'Ending'. It consists of two staves of music. The tempo starts at 100 and then changes to 92, and finally 88 → 72. The music is in 2/4 time and features a melody with various ornaments and fingerings. Fingerings are indicated by numbers 1, 2, 3, 4 and Roman numerals I, II. Dynamic markings include *p* and *pp*. There are also 'V' and 'X' symbols above the staff.

运用指法: (1)左手——按音、伏。(2)右手——弹、挑、分、双弹、划、轮、半轮、摘的练习。

注意: (1)第二段在反复三遍演奏时速度须逐渐加快。(2)第三段须弹奏得清晰活泼。

说明: 本曲为潮州民间合奏曲。第三段插花为本曲的最高潮,内容活泼流畅,是潮州曲调中的代表作。





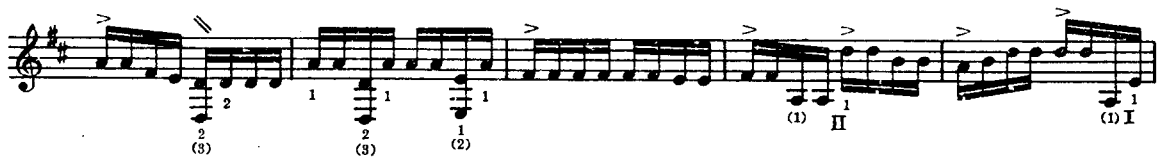
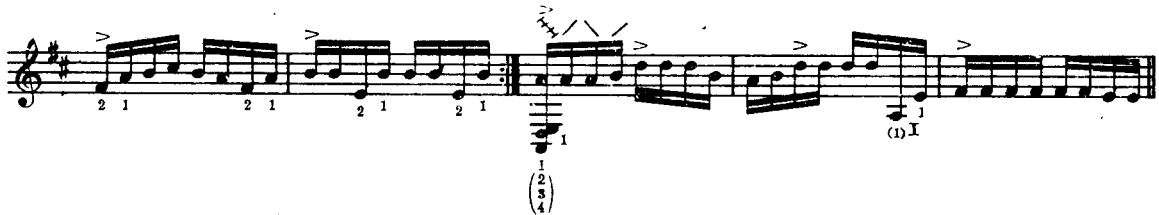


(式弄)(其一)



重奏(合头)后接(其二)

(其二)



重奏(合头)后接(其三)