

都市住宅 Urban Interiors



图书在版编目(CIP)数据

都市住宅/刘圣辉摄影 徐佳兆撰文. — 沈阳:

辽宁科学技术出版社, 2004.3

ISBN 7-5381-4145-6

I. 都... II. ①刘... ②徐... III. 住宅—室内装饰—

建筑设计—图集 IV. TU241-64

中国版本图书馆CIP数据核字(2004)第010244号

出版者: 辽宁科学技术出版社	Publisher: LiaoNing Science and Technology Press
地址: 沈阳市和平区十一纬路25号 邮编: 110003	Address: No.25 ShiYiWei Rd., ShenYang, China 110003
印刷者: 利丰雅高印刷(深圳)有限公司	Printing: LeeFung-Asco. Printers Holdings Limited
制版: 上海圣辉制版电脑有限公司	Plate Making: Shanghai ShengHui Process Computer Co., Ltd.
发行者: 各地新华书店	Issuer: XinHua Bookstore all over the country
开本: 956mmX1257mm 1/16	Format: 956mmX1257mm 1/16
字数: 100千字	Word Count: 100,000.00
印张: 15	Printed Sheet: 15
插页: 4	Interleaf: 4
印数: 1~3000	Impression: 1~3000
出版时间: 2004年3月第1版	Publishing Time: First Edition Mar. 2004
印刷时间: 2004年3月第1次印刷	Printing Time: First Edition Mar. 2004
责任编辑: 陈慈良	Chief Editor: Chen Ci Liang
封面设计: 蔡勇	Cover Design: Cai Yong
插图: 曹佳艺	Illustration: Cao Jia Yi
英文翻译: 唐於斯	Translator: Yusica Tang
版式设计: 蔡勇/魏玮	Format Design: Cai Yong/Wei Wei
特约编辑: 张书鸿/田宁辉	Senior Editor: Zhang Shu Hong/Tian Ning Hui
责任校对: 刘莉/东戈	Examiner: Liu Li/Dong Ge

定价: 198.00元	Price: RMB 198.00
联系电话: 024-23284360	Tel: 024-23284360
邮购咨询电话: 024-23284502	Mail Order Tel: 024-23284502
E-mail: lkzsb@mail.lnpgc.com.cn	E-mail: lkzsb@mail.lnpgc.com.cn
http://www.lnkj.com.cn	http://www.lnkj.com.cn

欢迎拥有和知晓特色室内空间的读者与我们联系: If you have some idea of special-concept space please contact with us via
袁小姐: 13501620382 13501620382: Ms. Yuan
Email: sh@shenghui-cn.com Email: sh@shenghui-cn.com
Website: http://www.shenghui-cn.com Website: http://www.shenghui-cn.com
http://www.sunstudio-cn.com http://www.sunstudio-cn.com

都市住宅 Urban Interiors

摄影:刘圣辉 策划:袁媛 蔡希文 设计:蔡勇 魏玮 撰文:徐佳兆 张霞 翻译:唐於斯 插图:曹佳艺

辽宁科学技术出版社

目录

CONTENTS

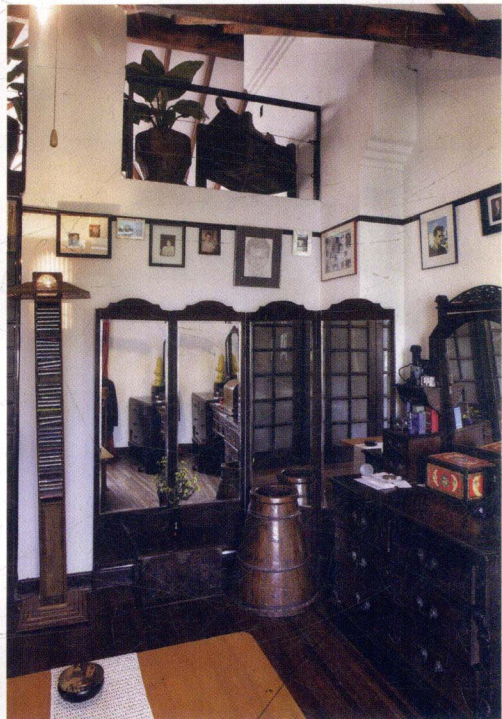
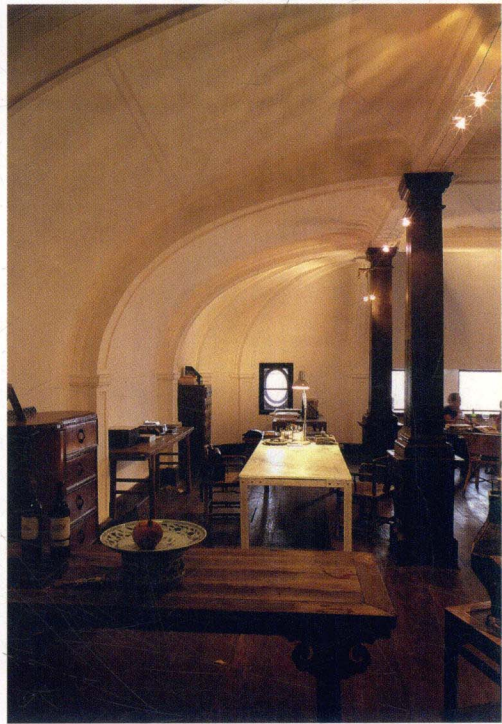
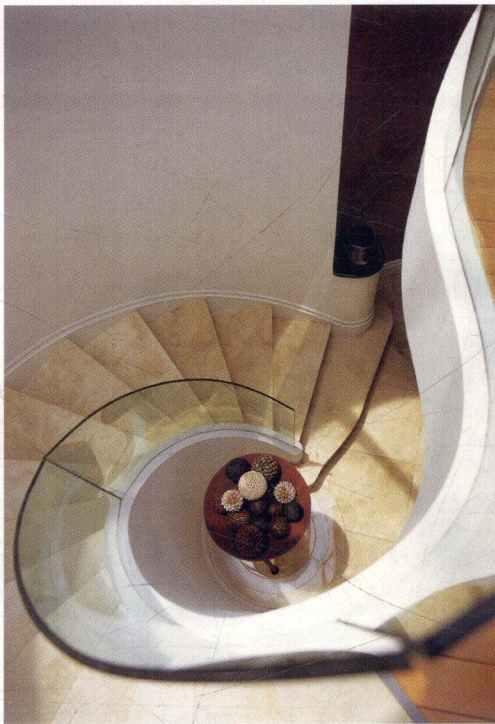
简单直接的想象	SIMPLE BUT DIRECT IMAGINATION	6
多元的设计风格	MULTI-CULTURAL DESIGN STYLE	16
自在与安详的气度	FREE AND COZY ATMOSPHERE	28
多重的色调	MULRIPL E TONE	36
物质生活的品位	MATERIAL LIVING TASTE	50
潜藏高处的品位	NOBLE TASTE	58
端庄中的诡魅	ELEGANT CHARM	68
日式的清爽素雅	SIMPLE BUT ELEGANT JAPANESE STYLE	76
有序的灵动气质	ORDERED INSPIRATIONAL CHARACTER	84
盈溢的东方味道	RICH CLASSICAL TASTE	94
极至张扬的现代派设计	EXTREME CONTEMPORARY DESIGN	114
仓库式的家居	RESIDENCE IN WAREHOUSE	126
功能与情趣的平衡	THE BALANCE OF FUNCTION AND DECORATION	138
上海生活风格	SHANGHAI LIVING STYLE	146
凝重与简洁的融合	DIGNIFIED AND CONCISE COMBINATION	152
适量的中式元素	MODERATE CHINESE ELEMENT	162
宽广与大气的意蕴	THE SPACIOUS AND ROOMY PRESENTATION	168
古典元素的满溢	CLASSICAL BRIM	182
把陶艺融入生活	INFUSE THE POTTING INTO LIFE	190
视觉感受简单化	VISUAL SIMPLIFICATION EFFECT	202
自我风格的张扬	EGO STYLE	208
空阔的境界	SPACIOUS AMBIENCE	218
隐退设计味的家居	FAMILY SENSE RESIDENCE	226
精致豪华的趣味	EXQUISITE DESIGN STYLE	232

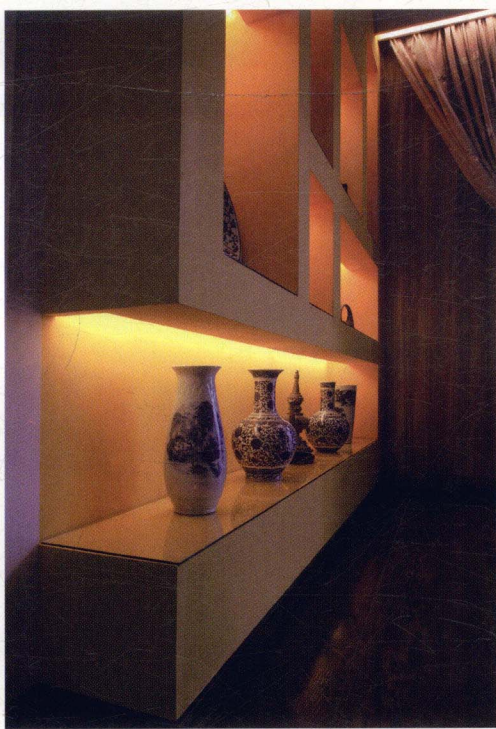
前言

PREFACE

都市住宅的设计与装饰是永远的热点，如果设计与装饰得当，那么住宅不仅可以给人提供适宜居住的环境，同时还能体现出某种风格和气氛，表现强烈的美感。住宅装饰设计者大多结合居住人的心理、生理、审美以及人体工程学、视觉感受等多方面因素制订设计，确定风格基调，然后再选择不同装饰材料、装饰手段、表现形式、色彩和布置格局，使住宅内部不同的空间给予人不同感受，如卧室通常应有安静气氛，客厅大都呈现亲切氛围。但同时也有一些住宅的设计让人抽离原有空间经验，去感受新的生活体验，从而享有舒解平日压力的效果，这样的设计主题通常会跳脱惯常中式西式的形式纠葛，把设计议题摆在如何去创造一个带来全新感受的住所。本书案例住宅的设计，首先都强调了功能的完善，因为住宅设计装饰总是以人和家庭为中心展开，满足功能的需要，就创造了舒适的家居环境；但是风格趋向多元化，中式、日式、古典、新古典、现代、后现代以及欧陆式等一起涌现；材料选择呈现多样化，包括玻璃、金属等以前只在商业空间内常用的材质也进入住宅的装饰中，在此基础上，也敢于运用夸张的主体色调；在空间的构成上，更讲究利用的效率以及划分的灵活性，不再局限于墙体的区隔，而注重功能上的逻辑关系；而室内家具、灯具和摆设的遴选和布局，也都会服从整体空间的设计主题，即而尽量突出个性和美感。

The highlight of Urban Residence falls into its design and decors. If the combination of them comes to the suitable results, the construction could provide the cozy environment and unique atmosphere, thus conveying strong aesthetic taste. Most decoration of residence tends to fit its master's mental, physical, taste and kinesics, visual feeling. Then the designer chooses various material, color and spatial arrangement to create different interior atmosphere. For instance, the bedroom is always infilled with peaceful and silent sense; the living room is designed in a cozy and elegant atmosphere. However, at the same time, some kinds of residence gets rid of original space but applies new living elements into structural design. This kinds of design theme deviate from the normal western style but to create a totally fresh feeling. The sample cases listed in this book give emphasis on their perfect functions. The main urban design idea is based on human beings and family. To meet the function needs is to create the cozy family environment. But the style tends to multinational ones, e.g. Chinese, Japanese, classical, neo-classical, modern and European style. The application of material tends to diversification, it includes glass, metal and some interior commercial stuff. On this basis, it chooses exaggerated tone coupled with flexible spatial arrangement to promote its uniqueness and beauty. The selection of interior furniture, lighting and other decors also follow the whole spatial design concept.



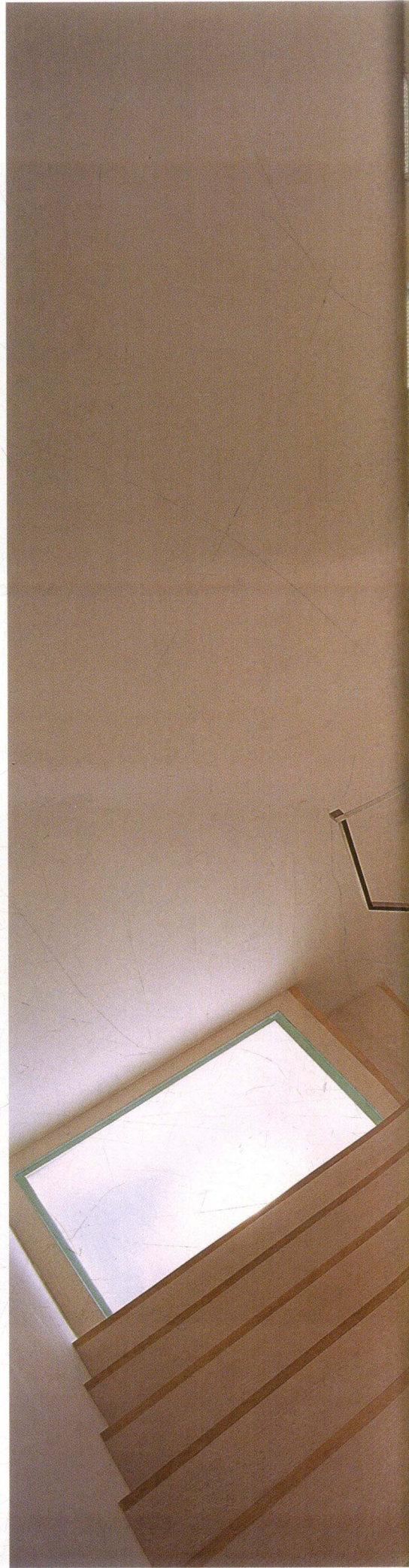






此公寓是复式的结构，上下两层200平方米，整体设计风格现代简洁明快，色调趋于冷色。一楼从玄关开始，隔着一张放着鲜花的矮凳就是客厅，相邻近的餐厅抬高了几寸，与客厅和玄关形成错层。厨房与餐厅仅一墙之隔，墙面为珠光粉色，与纯白的主色相呼应，连接二楼的楼梯为单线条的直角梯，视觉效果更为直接简明。二楼除了楼梯周围的回廊，便是起居室、卧室与书房，包含两个卫生间，在设计中打通了所有的非承重墙，最大限度地利用自然采光，空间气质更显轻盈写意。整个家居设计中，体现了简单实用的理念，而不含激烈的冲突，一些小细节上又表现出独特的情趣，譬如楼梯的上方有三个矩形的凹槽，经过顶灯的照射，楼梯边的墙面出现了纵横交错的景观图纹，令平平无奇展现生动有趣。设计中为了避免过多直线带来的缺乏变化，又要充分展现对简洁单纯的追求，所以运用了一些互补的元素，譬如在线条明朗清晰的餐厅天花制作了一个椭圆的吊顶，在直角楼梯的下方放置一张长圆的茶几，这些细小的局部设计平衡了直线带来的单一和极端，使空间视觉更顺畅。

This flat is two-layer construction. And total area is about two hundred square meter. The main design concept is contemporary and simple. It tends to the cold tone. The base stool with flowers is the symbol of vestibule. The close dinning area is formed to be the multi-layer of living room and vestibule. One wall separated the kitchen and dinning area. The metope is adopted shinning painting, echoing the white main tone. The stair of 2nd floor is set a right-angled corner. Broken all the non-main wall, it is made the maximum use of nature lighting. Simple and practical idea is added to the living room, bedroom and study room of 2nd floor. Some small decors promote the unique sense of designer, such as three rectangular grooves display the free pattern after lighting. In order to avoid the monotone sense of straight line, it is applied some complementary design elements to reach the simple but extraordinary effect. For instance, a elliptical top of dinning ceiling, a elliptical tea table of straight line stair. All these detail application balances the singleness and extremeness, thus bringing out a smooth visual effect.





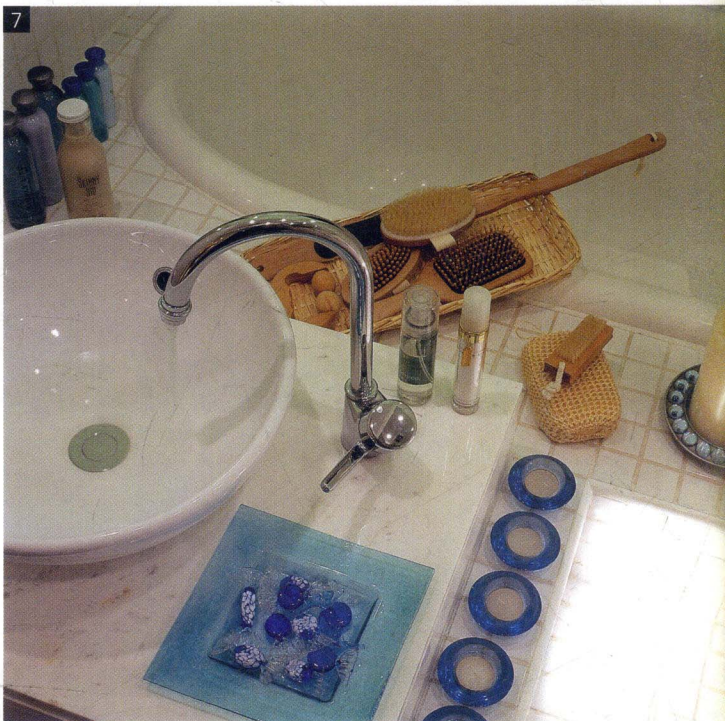
5



6



7



10



1. 质朴单纯的视觉在较小空间最有表现力。

The plain and simple visual effect is brought out easily in relative small space.

2. 空间的单纯感并不影响设计师在细节上的安设。

The spatial monotone has no impact on the arrangement of detail design.

3. 顶部设置的吊饰在与地面的设计呼应之外，也完成了室内采光的需要。

The top decors echo the flooring design well.

4. 楼梯的设计颇具视觉冲击。

The stair adds a strong visual strike.

5. 客厅的布置也遵循着简单、直接。

The arrangement of living room also follows the main simple and direct design concept.

6. 浅蓝色的浴室不仅色彩舒适, 在细节的设计上采用了墙面镶嵌式的手法, 节约空间的同时亦方便使用。

The light blue background adds a cozy atmosphere of washroom.
It is applied the cladded method to save the space.

7. 浴室也透露出艺术生活的感觉。

The washroom also conveys a sense of living art.

8. 几何线条和图案在单纯的环境中相当有表现, 亦丰富了空间的各层次。

The geometrical patterns enrich the spatial layer.

9. 餐厅整体的优雅与简约在灯光的设置后更有提升。

Set in special lighting, the dinning area enhances the sense of elegance and simpleness.

10. 卧式佛像的出现令整个环境的单纯出现了逆转。

The horizontal figure of Buddha made the highlight of simple environment.

11. 单纯的色彩, 简单的线条, 透出卧室的温馨与宁静。

Pure color coupled with simple line convey a cozy but peaceful style.

12. 黑色与白色的视觉对比充满经典的意味。

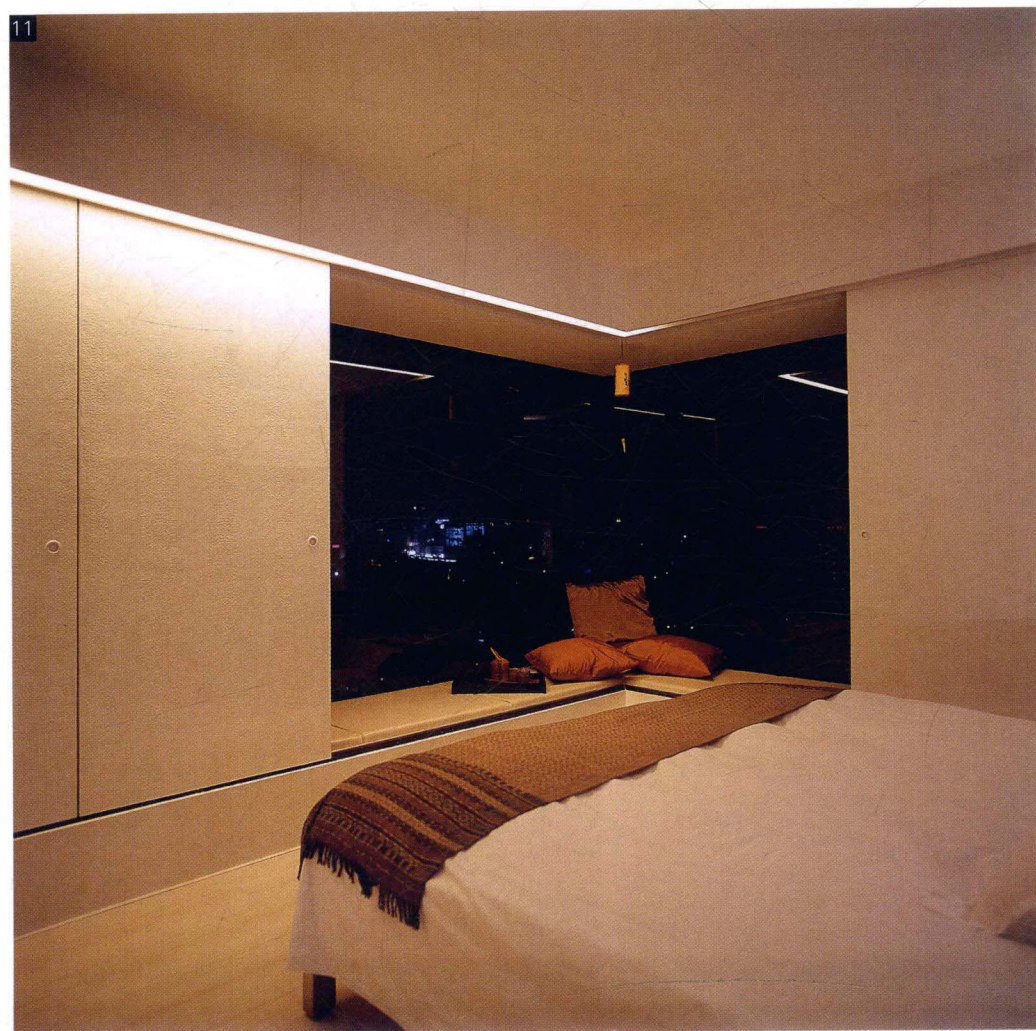
The visual contrast of black and white promotes a classical sense.

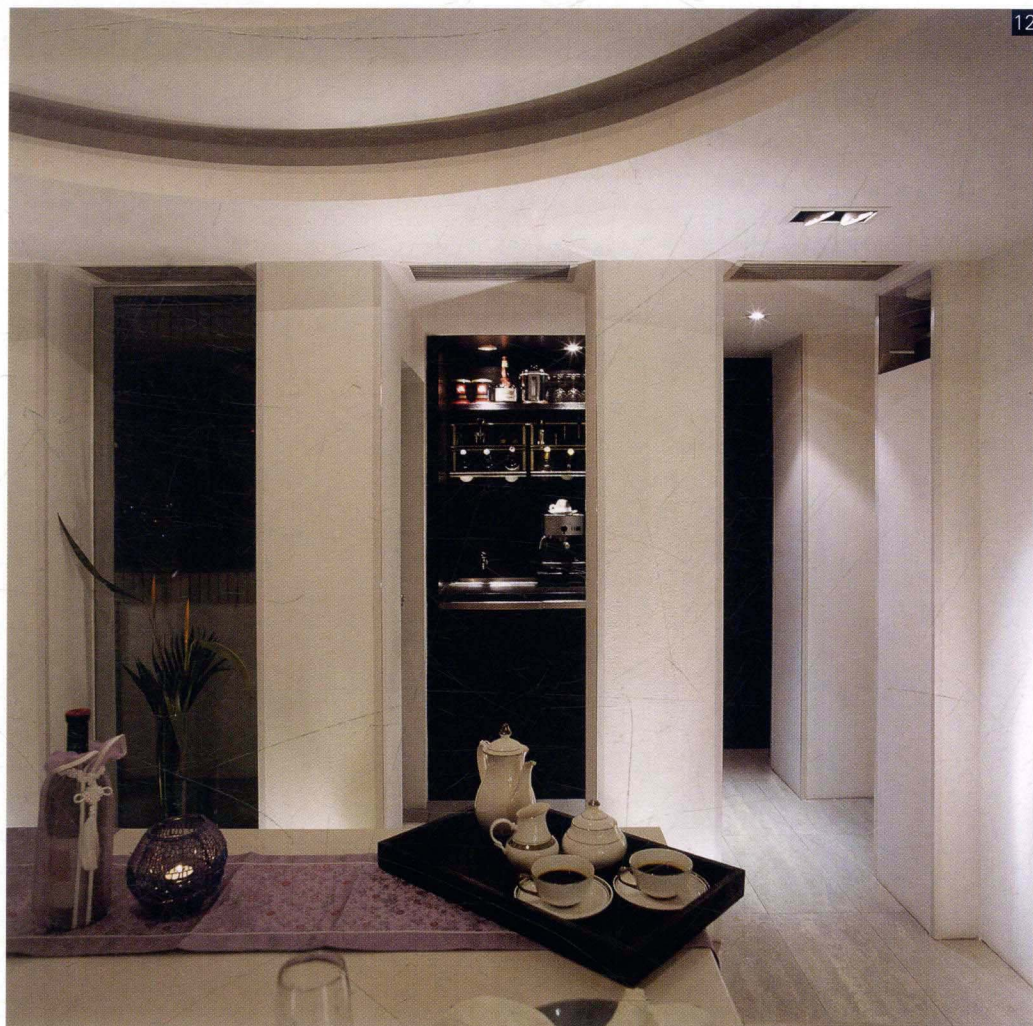
13. 即便是一转角的视野中也能体味到设计的精妙。

The delicate design theme is even applied in one corner.









12



13