



LANDSCAPE

X ARCHIVES

China Public Landscape

景觀 X 檔案

中國
公共景觀

H.K. RIHAN INT'L CULTURE SPREAD LIMITED
香港日瀚國際文化傳播有限公司 編

華中科技大學出版社

Huazhong University of Science and Technology Press

TU986.2-64/59

:1

2008

China

LANDSCAPE X ARCHIVES

Public Landscape

景觀X檔案 中國
公共景觀

H.K. RIHAN INT'L CULTURE SPREAD LIMITED
香港日瀚國際文化傳播有限公司 編

◀ 華中科技大學出版社

Huazhong University of Science and Technology Press

中國景觀X檔案 Public Landscape 公共景觀

圖書在版編目 (C I P) 數據

中國景觀X檔案·公共景觀/香港日瀚國際文化傳播有限公司 編. —武漢:
華中科技大學出版社, 2008. 1
ISBN 978-7-5609-4343-5
I. 公… II. 香… III. 景觀—園林設計—中國
IV. TU986. 2
中國版本圖書館CIP數據核字 (2007) 第186960號

中國景觀X檔案·公共景觀
香港日瀚國際文化傳播有限公司 編
地址: 香港中環皇后大道中142-146號金利商業大廈7樓7A室
電話: (00852) 25814966
傳真: (00852) 28514966
移動電話: 15800334158 13621898862 13916371789
主編: 邢日瀚 李天彬
責任編輯: 王彩霞
責任校對: 朱霞
責任監印: 張正林
出版發行: 華中科技大學出版社
地址: 湖北省武漢市洪山區珞喻路1037號
郵編: 430074
電話: 010-64155566 (銷售) 010-64155588 (郵購)
版式 / 封面設計: 上海日瀚文化傳播有限公司
制版: 凱基印刷 (上海) 有限公司
印刷: 上海美雅延中印刷有限公司
開本: 787mm × 1092 mm 1/12
印張: 33
字數: 62千字
版次: 2008年1月第1版
印次: 2008年1月第1次印刷
ISBN 978-7-5609-4343-5 / TU · 267
定價: 289.00元

CHINA LANDSCAPE X ARCHIVES PUBLIC LANDSCAPE H.K. RIHAN INT'L CULTURE SPREAD LIMITED

Address / Flat / Rm 7a, 7 / F., Kimley Commercial Building,
142-146 Queen Road Central, H.K.

TEL / (00852) 25814966

FAX / (00852) 28514966

Mobile / 15800334158 13621898862 13916371789

Chief-editor / Xing Rihan Li Tianbin

Executive Editor / Wang Caixia

Executive Proofreader / Zhu Xia

Executive Manufacture / Zhang Zhenglin

Publisher / Huazhong University of Science and Technology Press

Address / No.1037 Luoyu Road, Hongshan District, Wuhan, Hubei, P.R. China

Post Code / 430074

Telephone / 010-64155566 (sale) 010-64155588 (order)

Design for Format and Cover / Shanghai Rihan Culture Propoganda Co., Ltd.

Plate Making / Kaiji Printing Co., Ltd. Shanghai

Press / Meiya Printing Co., Ltd. Shanghai

Size of Book / 787 mm × 1092 mm 1/12

Total Pages of Printing / 33

Total Words / 62 thousands

Order of Edition / The First Edition, in Jan. 2008

Order of Press / The First Edition of Press, in Jan. 2008

ISBN 978-7-5609-4343-5 / TU · 267

Price: RMB ¥ 289.00

CONTENTS

Planning

規劃

- 008 Suzhou Lion Mountain
苏州狮子山
- 020 Chengdu East Networks City
成都东区城市设计
- 032 The Ocean Coast Plaza and Leisure Park of Shenzhen Bao'an District
深圳市宝安区海滨广场与海滨休闲公园
- 046 Guangzhou Panyu Shiqiao Waterfront Urban
广州市番禺区市桥河一河两岸城市设计
- 052 Haikou Project
海口项目
- 058 The Center Area of Southwest Group in Foshan
佛山市西南组团中心区
- 066 Conceptual City Planning Design of Jinshazhou Living New City Center Area
金沙洲居住新城中心区城市意向设计
- 074 Zhongguancun Innovation Park
中关村创新园
- 086 Conceptual Design of Southern Base of China Mobile Communication
中国移动南方基地规划设计

Park

公園

- 098 The Red Ribbon of Tanghe River: the Zoological Meaning of Simplicity Doctrine
汤河的红飘带：洁简主义的生态学含义
- 110 The Art of Companioning the Flood: Yongning Park in Huangyan, Zhejiang Province
与洪水为友的艺术：浙江黄岩永宁公园
- 118 Hongqiao Park
虹桥公园
- 128 Renheng Yunjie Bank Garden
仁恒运杰河滨花园
- 138 The Shanghai Glory Park
上海大华“锦绣华城公园”
- 146 Tang Dynasty Chang'an City Wall Relics Park
唐长安城墙遗址公园
- 156 Hongyegu Eco-cultural Tourist Attraction
红叶谷生态文化旅游区
- 164 Kunshan Shimao Butterfly Bay
世茂昆山蝶湖湾
- 174 Shenzhen ST-Moritz
深圳圣·莫丽斯
- 180 Fengqi Garden
凤栖苑
- 186 Chaoyang Square
朝阳广场
- 190 Wuhan Zhongshan Warship
武汉中山舰
- 202 Landscape Design of Entrance of Taihu Lake National Tourist Zone
苏州太湖国家旅游度假区入口景观设计
- 210 Landscape Design of Century Park in Guanyun County
灌云县世纪公园景观规划设计方案

Phase III Landscape Design of Sun Island Tourist Attraction of Harbin	224
哈尔滨太阳岛旅游风景区三期景观设计	
Scheme Design of Wetland Park, Qingbaijiang Zone, Chengdu	232
成都青白江湿地园方案设计	
Landscape Design of Hugou Reservoir Park	236
连云港胡沟水库公园景观方案设计	
The Entrance Area of Xitianxia Beauty Spot in Anhui	240
安徽岳西天峡风景区入口区	
City Valley Park Project for Qianjiang District	244
黔江区城市峡谷公园规划	

Water Bank Scenic 滨水景观

Landscape Design of the Peninsula	250
半岛城邦一期居住区及滨海带	
The Environmental Design of Bailang Waterfront in Weifang of Shandong Province	268
山东潍坊市白浪河滨水区域景观规划	
Landscape Design of Lianyungang Dongyan River	276
连云港市东盐河绿化景观方案设计	
Foshan New City Central Park & Waterfront Park	282
佛山市新城区中央公园与滨河公园	
Landscape Design of Stream Beside Huanchengbei Road in Ganyu County	292
赣榆县环城北路北侧水系景观设计方案	
Shiqi Waterfront in Zhongshan Downtown	302
中山市中心城区石岐河滨水区	

Hotel & Square**酒店和廣場**

- 314** Hyatt Regency of Songshan Lake
松山湖凯悦五星级酒店
- 322** Shenyang Architectural University; paddy Field of "Non-agricultural Era"
沈阳建筑大学：“非农时代”的稻田
- 330** East Section of Party School of the CPC Normal Landscape in Special Site
中共中央党校东区：非常场所的寻常景观
- 342** Shimao International Convention Center
佘山世茂国际会议中心
- 352** Landscape Design of Renminnan Boulevard, Shenzhen
深圳市人民南路环境景观改造方案设计
- 362** CCTV Media Park
CCTV媒体公园国际竞赛
- 368** Guangzhou West Tower
广州西塔区
- 374** The West Tower of Pearl River New City
珠江新城西塔
- 380** The Backup Center of Shanghai Peace Insurance Corporation
上海平安保险公司后援中心

INDEX**名錄**

Suzhou Lion Mountain	008
苏州狮子山	
Chengdu East Networks City	020
成都东区城市设计	
The Ocean Coast Plaza and Leisure Park of Shenzhen Bao'an District	032
深圳市宝安区海滨广场与海滨休闲公园	
Guangzhou Panyu Shiqiao Waterfront Urban	046
广州市番禺区市桥河一河两岸城市设计	
Haikou Project	052
海口项目	
The Center Area of Southwest Group in Foshan	058
佛山市西南组团中心区	
Conceptual City Planning Design of Jinshazhou Living New City Center Area	066
金沙洲居住新城中心区城市意向设计	
Zhongguancun Innovation Park	074
中关村创新园	
Conceptual Design of Southern Base of China Mobile Communication	086
中国移动南方基地规划设计	

Planning

規劃

Suzhou Lion Mountain

蘇州獅子山

Landscape design company: BAU Brearley Architects and Urbanists

Designer: James Brearley , Yan Han

Client: Suzhou Gaoxin district planning bureau

Design date: Jun. 2006

Project location: Suzhou Gaoxin district

Landscape area: 37,000m²

Greening rate: 27%

Plot ratio: 2.3

Programs: District commercial and cultural centre, including: shopping mall, offices, cinemas, community, centre, small retail, park, plaza, hotel, service apartments, soho (single occupant home office).

景觀設計單位: BAU建筑与城市设计事务所

設計師: James Brearley , 严含

委托方: 苏州高新区规划局

設計時間: 2006年6月

項目地點: 苏州市高新区

景觀面積: 37 000平方米

綠化率: 27%

容積率: 2.3

項目: 商业与文化中心包括: 大型商场, 办公楼, 电影院, 社区, 中心, 小型零售店, 公园, 广场, 酒店, 服务公寓, 及soho (办公及住宅一体楼)

The context is complex: Lion Mountain is located 200m northern apart from the site; There is an existing park on the E_N corner of the site; Two canals pass through the site, N_S and E_W directions; The opposite is a proposed city commercial belt which leads to the northern commercial centre; The metro emerges out of the centre of the south edge of the site.

The proposed scheme creates a public green network connecting the existing park and canals, with strong relationship with Lion Mountain. The lineal public plaza points to Lion Mountain. Together with the green pedestrian net these form the backbone of the scheme. The community centre is located at the intersection of the two canals, which connects the eastern metro station plaza and the western public plaza. Small scale commercial along the bridge building and large public steps help maximize the effect of this anchor building.

A green promenade links the site to Lion Mountain to the north, extending the city's public green space.

One side of this lineal plaza is a continuous tent roof structure, which provides the city with a great shelter space and landmark. The other side of this plaza is a building podium with colonnade and courtyard, which provides people with a comfortable walking environment. The plaza is likely to become the cities dining room, highly active, day and night.

The community centre building is located in the centre of this site. It connects the eastern metro station plaza and the western lineal plaza with great steps and bridge buildings, which provide people with convenience of a walking route and a promenade along the northern river edge.

The birds eyes view from lion mountain locates on the north of the site, which shows clearly a boulevard axis pointing to lion mountain (land mark of this area) and a small scale public commercial belt together with a lineal public plaza with half it's area under a continuous tent roof structure, which forms an active public space and provides high potential for different kinds of activities.

On one side of this continuous tent structure roof is a small scale commercial space, these small buildings are combined in 'random' to form a human scale 'labyrinth'. It provided people with a place to escape into. The other side of the buildings is a green service road.

The freeway passes the southern edge of site, the office buildings were designed as mountainous forms with pure elevations, which provided people with a strong visual impression.

The east part of the site is a big box shopping mall. It should become a powerful commercial 'magnet' with a great deal of people playing here. The arcade space on ground floor along the street provides a comfortable walking environment.

The rooftop of this building includes outdoor sports courts and a parking lot under the mechanical structure.

The birds eyes view from south of the site shows the axis pointing to Lion Mountain made up of a lineal public plaza, small scale commercial belt, and green networks along the river edge in the park. Each small plot is connected directly to this green network, providing people with frequent opportunities to connect to the park environment.





Partial airspace
局部鳥瞰圖

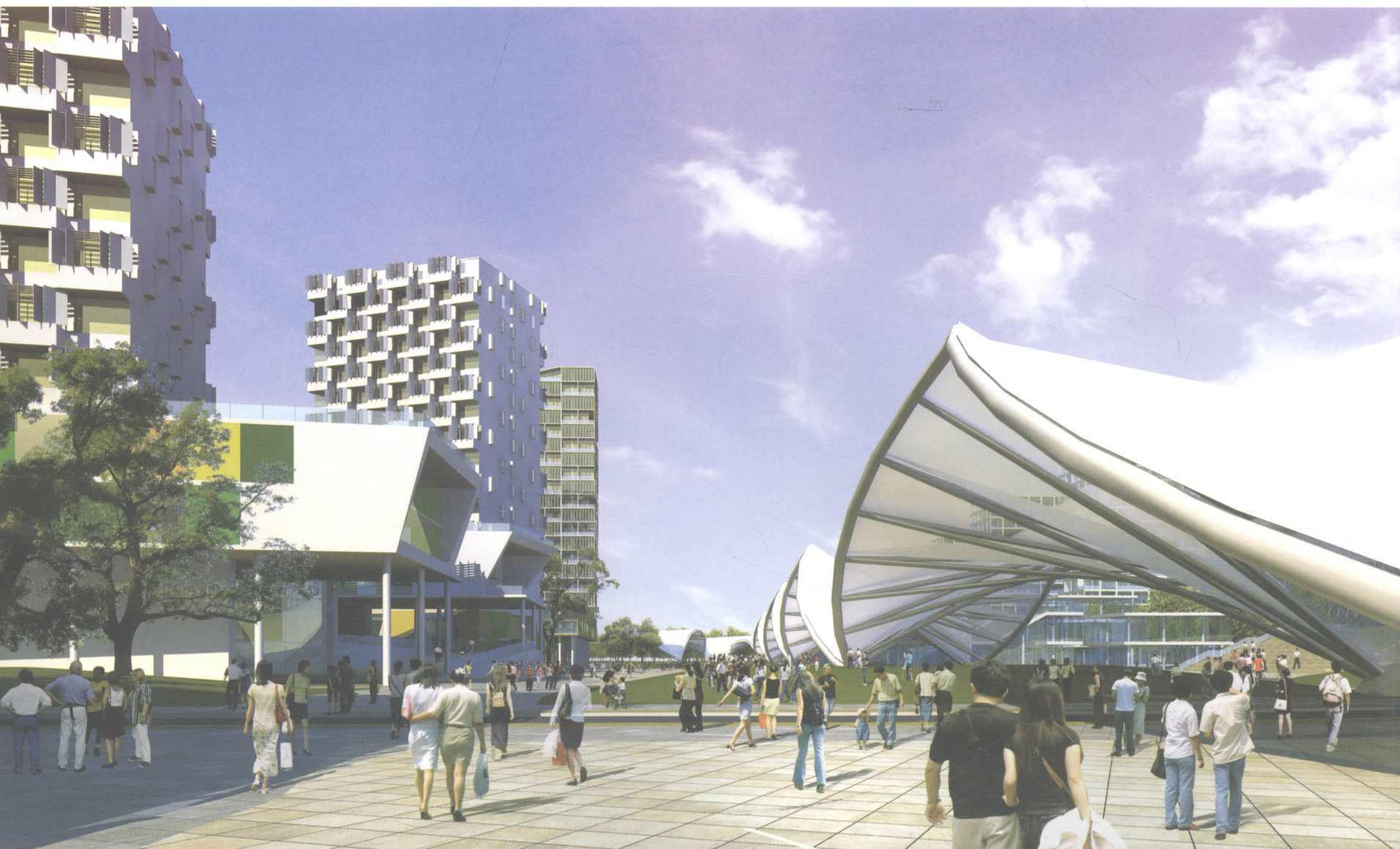
這個項目所在地塊的特點在于：其北側相距僅200米處為獅子山；地塊的東北角為一現狀公園，園內有一條河流從南北和東西兩個方向上流經整個地塊；地塊東側沿街為規劃中的城市商業帶，向北一直延伸至城市商業中心；地塊南側邊界的中間位置恰逢地鐵行出地面點，繼續向西則成為架空輕軌。

規劃方案充分尊重地塊的現狀特色，依托現狀公園及河道，形成了一個與獅子山密切交流的公共綠色網絡體系，并通過指向獅子山的帶狀公共開放廣場的布局，以及由公園生長出的沿河綠網步行系統，共同創造了整個方案的骨架。社區文化中心建築被安排在兩河交接處，并通過建築橋的手法，將其與地塊東側的地鐵站廣場相連，而其西側則通過一個大臺階

滲透進入小尺度商業帶和公共廣場空間，從而最大限度的發揮了這個“心髒”建築的作用。地塊北側通過休閒步行道和生態綠地與獅子山相連，進一步加強了城市公共綠地空間的連續性。綫形廣場的一側是帳篷結構的連續屋頂，不僅為城市提供了一個强有力的地標，也為在此活動的人們提供了遮風擋雨的場所，使其不受惡劣天氣的影響。廣場的另一側為裙房建築的騎樓空間和庭院空間，為步行者提供了舒適宜人的環境。整個廣場將成為一個“熱點”，無論白天還是夜晚都充滿人氣，是人們充分交流和休閒的“城市客廳”。社區中心建築位于整個地塊的“心髒”位置，并通過步行大臺階和建築廊橋的形式，聯系東側的地鐵站廣場和西側的帶狀公共廣場，使人們可以非常方便的

穿越其中或沿着其北側的濱水步行道散步。這將是一個日夜繁忙的聚集地。從基地北側的獅子山俯瞰整個項目所在地塊，可以清晰的感受到指向獅子山（這個地區的地標）的軸綫林蔭道和其一側的小尺度公共商業帶，以及被遮蔽于連續帳篷屋頂下方的帶狀公共開放廣場，它們共同組成了這個地區的公共活力空間，最大限度的為市民提供了各種活動的可能性。連續帳篷結構屋頂的一側為小尺度商業空間，這些小建築的“隨意”組合共同構成了一個人性化的迷宮空間，人們工作之余可以在此獲得完全自由和釋放的體驗。這些小型建築的另一側則是綠樹成蔭的服務車道。輕軌經過地塊南側，辦公樓建築的設計以“山形”為元素，立面純淨，為快速途徑此地的人們提供了一個印象深

刻的視覺享受。地塊東側是一個巨型購物中心建築，它將成為這一地區的一個强有力的商業“吸點”，每天會有大量人流來此活動。建築沿街的騎樓空間為人們提供了舒適的步行環境。建築頂層為露天運動場和籠罩在網狀屋頂內的停車場。從基地南側俯瞰整個地塊，可以清楚地看見由綫形公共廣場和小尺度商業帶共同組成的指向獅子山的軸綫，以及由公園引伸出來的貫穿基地的河流綠地網絡。每一個小型地塊都直接與綠網相連，人們可以非常方便的步行其中，享受與自然的親密接觸。









From different angles, people can see different landscape effects. The material textures can be better reflected in the middle of the green space and they become an important landscape themselves.

從不同的角度，看到的是不同的景觀效果，材料的紋理在綠化中間很好的顯現出來，本身就成為了重要的景觀。

Lift: The flap turning in the streamline is the major rhythm of the landscape. The space has the musical feeling under its effect.

左：流線型翻動的折板是景觀中最主要的旋律，空間在它的帶動下，有了音樂的感覺。

