



Landscape Design Park

► 国外最新公共空间景观设计

• ARCHIWORLD公司 编



大连理工大学出版社

TU242/27

2008

Landscape Design Park

► 国外最新公共空间景观设计

• ARCHIWORLD公司 编
王向红 译

Landscape Design Park

Edited and published by ARCHIWORLD Co.,Ltd.

© 大连理工大学出版社 2008

著作权合同登记 06-2006 年第 164 号

版权所有·侵权必究

图书在版编目(CIP)数据

国外最新公共空间景观设计 / 韩国 ARCHIWORLD 公司编;
王向红译. —大连: 大连理工大学出版社, 2008.1

书名原文: Landscape Design Park

ISBN 978-7-5611-3819-9

I. 国… II. ①韩… ②王… III. 公共建筑—景观—空间
设计—作品集—世界 IV. TU242

中国版本图书馆 CIP 数据核字(2007)第 174783 号

出版发行: 大连理工大学出版社

(地址: 大连市软件园路 80 号 邮编: 116023)

印刷: 深圳市精彩印联合印务有限公司

幅面尺寸: 240mm × 300mm

印 张: 18.5

出版时间: 2008 年 1 月第 1 版

印刷时间: 2008 年 1 月第 1 次印刷

责任编辑: 刘 蓉

责任校对: 刘 品 张 泓

封面设计: 温广强

ISBN 978-7-5611-3819-9

定 价: 228.00 元

电 话: 0411-84708842

传 真: 0411-84701466

邮 购: 0411-84703636

E-mail: dutp@dutp.cn

URL: <http://www.dutp.cn>

国外最新公共空间景观设计

目 录

建 成 项 目

- 8 The Sydney and Walda Besthoff Sculpture Garden
Sydney and Walda Besthoff 雕塑花园
- 20 Frozen Symphony
凝固的交响乐
- 28 The Elizabeth & Nona Evans Restorative Garden
伊丽莎白和诺娜·埃文斯疗养花园
- 38 The Lurie Garden
Lurie 花园
- 48 One-North Park
一北公园
- 58 Court Square Press Courtyard
Court Square Press 庭院
- 68 Chess Park
国际象棋公园
- 78 Walker Art Center
行人艺术中心
- 84 Ulsan Grand Park
蔚山大公园
- 108 Sunyudo Park
Sunyudo 公园
- 130 Gyeongsangbuk-do Forest Science Museum
Gyeongsangbuk-do 森林科学博物馆
- 142 Paris Seoul Park
巴黎首尔公园
- 154 Saemiwon
洗美苑

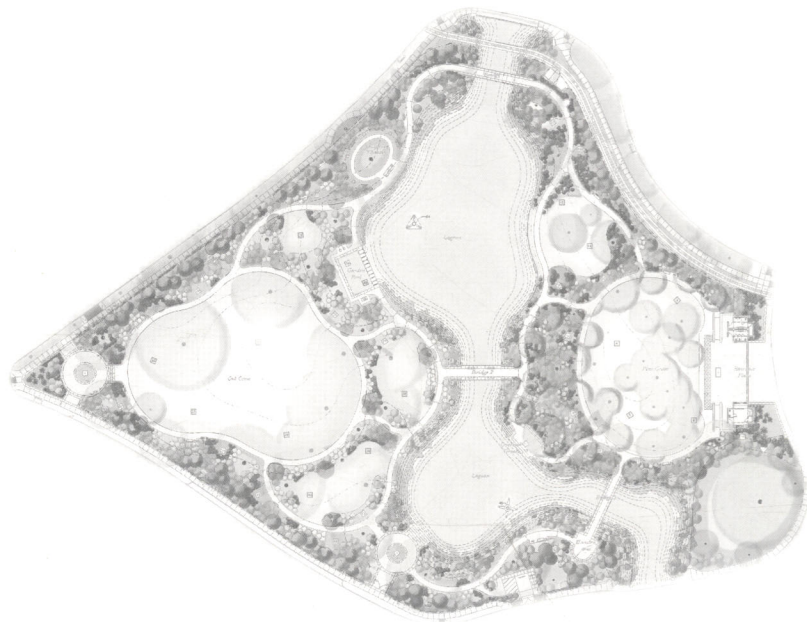
未建成项目

- 170 **Devonian Gardens**
德文郡花园
- 180 **Urban Space Falcognana**
都市空间 Falcognana
- 188 **WP90° XXL**
WP90° XXL
- 194 **Lugar Especific**
Lugar Especific
- 202 **Park Strijp**
Strijp 公园
- 210 **Foshan City Park and Waterfront Park**
佛山城市公园和河滨公园
- 218 **Parco Delle Torri**
Parco Delle Torri
- 226 **Hwaseong Dongtan PF Business-Metapolis**
Hwaseong Dongtan PF Business-Metapolis
- 236 **Hwaseong Dongtan Neighborhood Park**
Hwaseong Dongtan 邻区公园
- 250 **Songdo Neighborhood Parks, 2nd & 4th Development Zone**
Songdo 邻区公园, 第二、第四开发区
- 264 **Haenam Flower Garden Tourist Complex**
Haenam 花园旅游综合区
- 284 **Jirisan(Mt.) Wild Plant Environment Park**
Jirisan 野生植物环境公园



建成项目

Completed Works



The Sydney and Walda Besthoff Sculpture Garden

Sydney and Walda Besthoff 雕塑花园

景观设计: Sawyer/Berson Architecture & Landscape Architecture, LLP · J. Brian Sawyer, Tim J. Orlando | 地点: 美国, 路易斯安那 | 景观面积: 19263m² | 竣工时间: 2003 年
摄影: Richard Sexton

►►► The Sydney and Walda Besthoff Sculpture Garden at the New Orleans Museum of Art occupies approximately five acres in city park adjacent to the museum. Atypical of most sculpture gardens, this garden is located within a mature existing landscape of Pines, Magnolias and Live Oaks. The garden design creates outdoor viewing spaces within this picturesque landscape. A re-configured lagoon bisects the site and creates two distinct halves: a mature Pine and Magnolia grove adjacent to the museum, and a more open area of two-hundred year old Live Oaks across the lagoon near the New Orleans Botanical Garden. The Sculpture Garden is designed for approximately sixty sculptures, most of them donated to the New Orleans Museum of Art by Sydney and Walda Besthoff.

A pair of cast stone and bronze pavilions with clerestory windows mark the entry to the Sydney and Walda Besthoff Sculpture Garden at the New Orleans Museum of Art. The pavilions, which face a large meadow adjacent to the Museum's entry drive, flank a large plaza containing Henry Moore's 'Reclining Mother and Child'. The pavilions and entry plaza also establish a centerline through the depth of the garden that becomes an organizing element of the design.

The garden is bisected by a lagoon which has been re-shaped into two basins on either side of the central pedestrian bridge. These lagoon basins each contain a sculpture, Kenneth Snelson's 'Virlane Tower' and Arman's 'Pablo Casal's Obelisk'. By locating these vertical sculptures in the water, their reflections become part of the compositions.



A total of three pedestrian bridges cross the lagoon and connect the two sides of the garden. The entries to the bridges are marked by simple, cast stone pylons that support bronze lanterns. Side rails constructed of bronze and stainless steel mesh reflect the light and allow views through the bridges. This combination of cast stone lantern pylons and bronze with stainless mesh is repeated in the form of monumental gates at the main entry and two secondary entries.

A picturesque composition of curvilinear paths compliments the mature trees while creating smaller viewing areas, or 'galleries', within the garden. These paths also connect a series of garden features including the Overlook Terrace, the Exedra at the end of one of the pedestrian bridges, the monumental Water Steps at one of the secondary entrances, the elliptical Sculpture Theater containing smaller pieces of sculpture and the Cascade Garden Pool containing Robert Graham's 'Source Figure'. The pathways also frame the elliptical Pine Grove immediately off of the main entry plaza and the large Oak Lawn at the opposite end of the garden. With the exception of the lagoon, the Oak Lawn is the most open space in the garden and contains some of the larger sculptures including works by Louise Bourgeois, Deborah Butterfield, Elizabeth Frink, Joel Shapiro and Claes Oldenburg.





▶▶▶ 新奥尔良艺术博物馆的 Sydney and Walda Besthoff 雕塑花园占地约五英亩，坐落于毗邻博物馆的城市公园内。与大多数雕塑花园不一样，该花园处于由已有的松树、木兰和槲树构成的成熟风景区内。在如画的风景区中，该花园的设计打造了室外景观空间。经过改造的泻湖将这一区域划分成完全不同的两个部分：一个是毗邻博物馆的由松树林和木兰林构成的成熟景区，另一个在泻湖对面新奥尔良植物园附近，是由200年树龄的老槲树组成的更开阔的景区。该雕塑花园设计大约有60个雕塑，大多是由 Sydney and Walda Besthoff 捐赠给新奥尔良艺术博物馆的。

一对铸石和饰有天窗的铜制亭子是新奥尔良艺术博物馆的 Sydney and Walda Besthoff 雕塑花园入口处的标志。亭子朝向毗邻博物馆入口处车道的大片草地，侧面是建有 Henry Moore 的“斜靠的母与子”雕塑的大广场。亭子和入口广场构成了纵贯花园的中心线，成为设计中的统筹性因素。

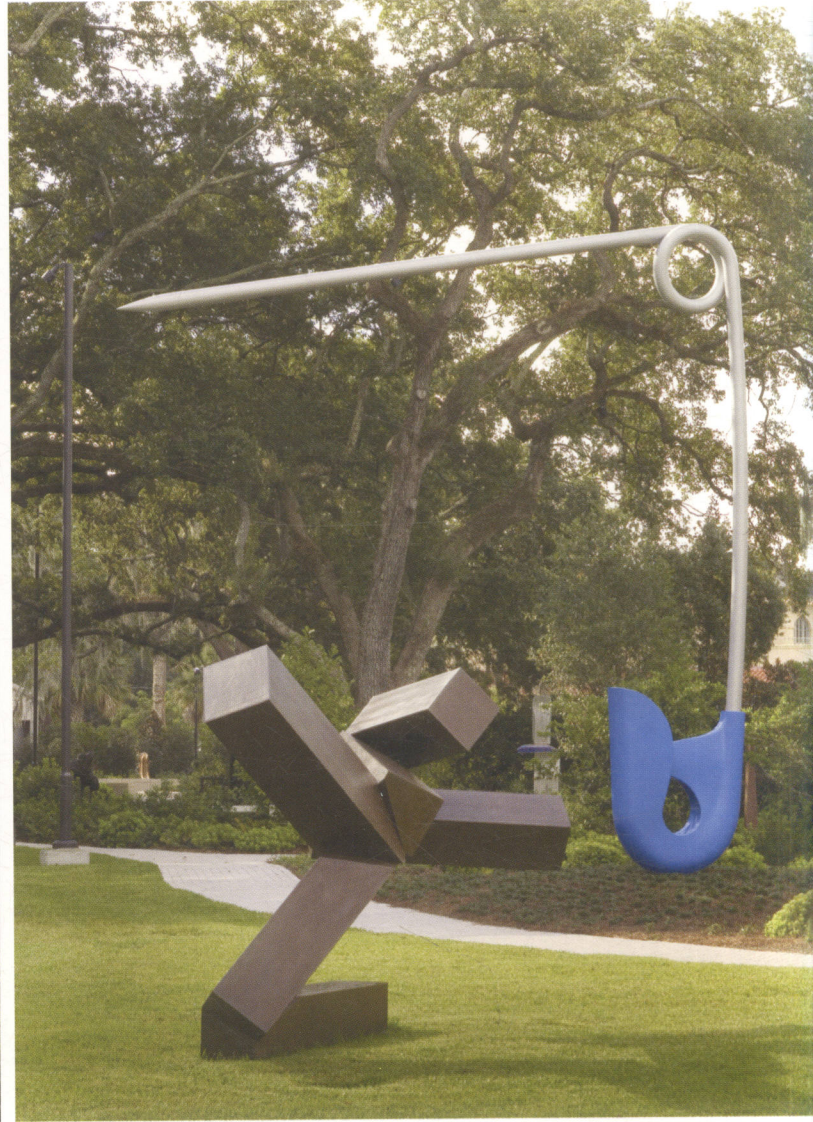
泻湖被改造成两个水池，位于中心步行桥的两侧，将花园分割成两部分。这两个泻湖水池各有一个雕塑，分别是 Kenneth Snelson 的“Viriane塔”和 Arman

的“Pablo Casal 的方尖石塔”。将这些立式的雕塑置于水中，其倒影也成为整个风景的一部分。

三座步行桥横跨泻湖，连接花园的两个部分。简洁的铸石塔门上方装有铜制灯箱，它们是进入步行桥的标志。两侧的扶栏是铜制的，不锈钢网面既可反射灯光，又可透视风景。在主入口处标志性的大门和两个次入口处，也重复使用了这种铸石灯箱塔门和铜与不锈钢网面相结合的形式。

蜿蜒的小路构成如画的风景区，突出了苍劲的树木，在花园内打造出小巧的景观区，也可叫做“画廊”；这些小路通往花园内的各处特色景物，包括观景台、步行桥一端的露天坐椅、一个次入口处的纪念碑式的水台、内有小型雕塑的椭圆形雕塑剧院，以及建有 Robert Graham 的“形状之源”的瀑布花园水池。小路还勾勒出紧邻主入口广场的椭圆形松树林以及花园另一端的大片橡树草坪的轮廓。除了泻湖，橡树草坪是花园中最为开阔的地方，这里有一些较大的雕塑，如 Louise Bourgeois、Deborah Butterfield、Elizabeth Frink、Joel Shapiro 和 Claes Oldenburg 的作品。











平面图

