

Asian Interiors

亚洲室内

1

办公室

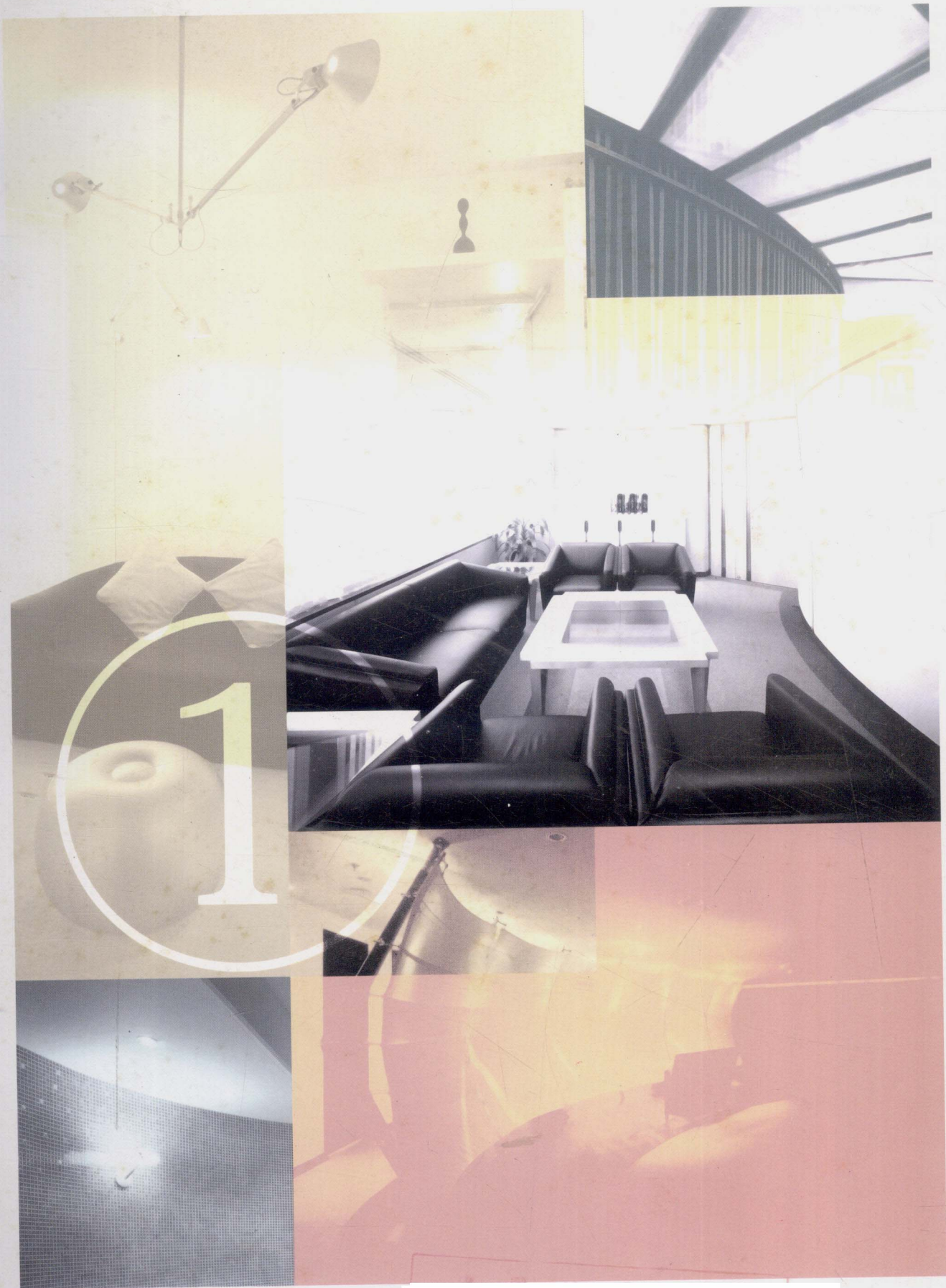
Corporate

住宅

Residential

中国计划出版社

贝思出版有限公司



中國計劃出版社

貝思出版有限公司

图书在版编目 (CIP) 数据

亚洲室内 (1) / 中国计划出版社编. —

北京: 中国计划出版社, 1998.7

ISBN 7-80058-666-9

I. 亚… II. 中… III. 室内装饰 - 建筑设计

IV. TU238

中国版本图书馆 CIP 数据核字 (98) 第 18990 号

亚洲室内 (1)

出版发行

中国计划出版社

地址: 北京市西城区月坛北小街 2 号 3 号楼

电话: (010) 6803 0048

邮编: 100837

贝思出版有限公司

香港柴湾嘉业街 18 号

明报工业中心 B 座 607-8 室

电话: (852) 2897 1688

各地新华书店经销

设计制作及电分: 广州贝思广告制作分色有限公司 电话: (020) 86578290

印刷: 广州金羊彩印有限公司 电话: (020) 85536162

开本: 680x940 mm 1/16 印张: 13 字数: 60 千字

1998 年 7 月 第 1 版 第 1 次印刷

印数: 1 — 5000 册

ISBN 7-80058-666-9/TU · 83 定价: 190 元

版权所有, 不得翻印

Asian Interiors (1)

Published by

China Planning Press, Beijing
China Planning Press
Building 3, 2 Yuetanbeixiaojie,
Beijing 100837
Tel: (010) 6803 0048

Pace Publishing Limited
Rm 607-8, 6/F, Ming Pao Ind. Centre,
18 Ka Yip St., Chaiwan,
Hong Kong
Tel: (852) 2897 1688

Wholesale by Xin Hua Book Store

Publication Design & Colour Separation: Guangzhou Pace Colour Separation Limited Tel: (020) 86578290
Printing: Guangzhou Golden Sheep Printing Limited Tel: (020) 85536162

Size: 680x940 mm Printed Sheet: 13 Wordings: 60,000

First printed in 1998.7, The PRC

Copies printed: 1-5000 copies

ISBN 7-80058-666-9/TU-83 Price: RMB 190

All rights reserved. No part of this book may be reproduced without prior permission in writing from the publisher.

Asian Interiors

亚洲室内

1

中文编辑：廖淑勤，周慧芳

Chinese Editor: Amy Liu, Fiona Chau

英文编辑：戴芸

English Editor: Raka Dewan

封面设计：湛子荣

Cover design: Chi Wing Cham

目录

办公室

粤海啤酒集团有限公司	8	罗马银行	71
粤海投资有限公司	10		
		MTLD 有限公司	75
荷兰银行	12		
西德意志洲银行	18	友嘉科技股份有限公司	77
香港建筑师学会及建筑师注册管理局	22	PRA 办公室	80
奥美广告亚太区办事处	27		
		深圳市玉兔装饰精品有限公司	83
泛太国际股份有限公司	32		
		Conoco	87
麦当劳中国发展公司	37		
Seaboard Eastern 保险公司	40	德设计师事务所有限公司	90
泰克香港有限公司	44		
		日本电信电话有限公司	93
北方电讯	48	香港新力	96
创建顾问有限公司	54	台湾某办公室	102
港威二期示范套间	59	Creative Technology	106
		Tourism Court	108
林周梁建筑师有限公司	61		
		Fontworks	110
3Com 亚洲有限公司	64	Redoute Asia Ltd.	113
安泰国际公司	67		

住宅

富欣花园	118	华景山庄	168
浅水湾道 3 号住客会所	120	雅乐居示范单位	172
		峰景	177
浅水湾暨宅	124		
		阳明山庄	181
碧湖花园	132		
大坑住宅	138	丽峰花园	185
		乐景园	188
赤柱住宅	143	何文田住宅	191
汇翠台	149	寿臣山村道复式住宅	194
		怡园	198
浅水湾道 37 号	154		
阳明山住宅	160	乐景台	202

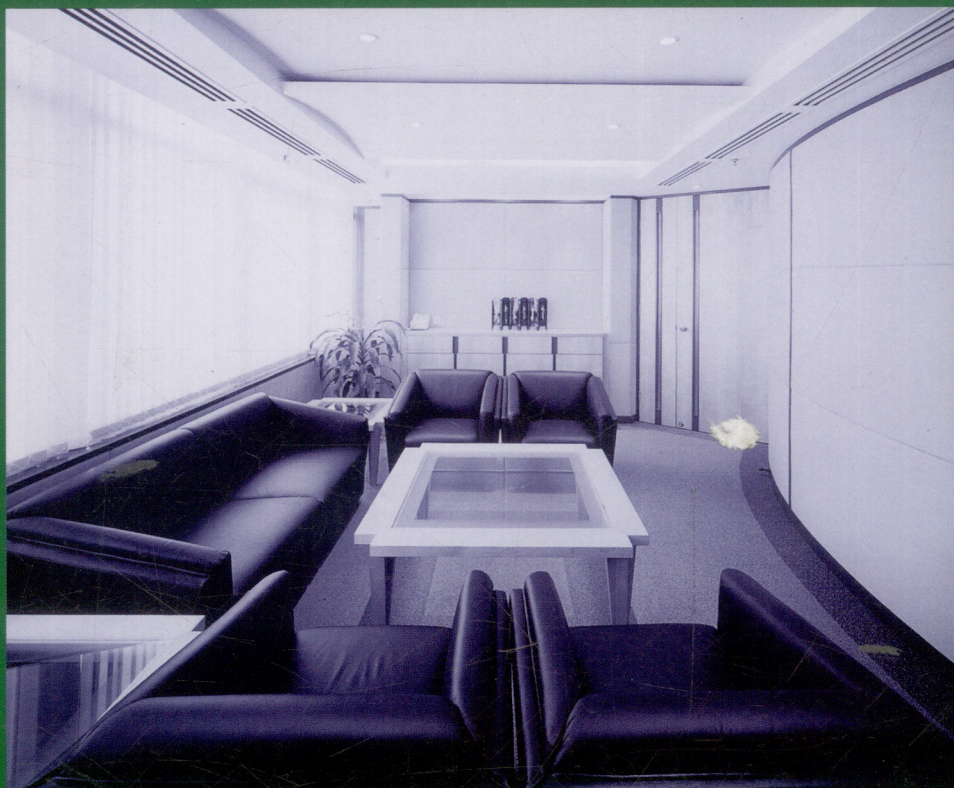
Contents

Corporate

Guangdong Brewery Holdings Ltd.	8	AEtna International Inc.	67
Guangdong Investment Ltd.	10	Banca Di Roma	71
ABN-AMRO Bank	12	MLTD & Associates Ltd.	75
Westdeutsche LandesBank	18	Sirus Technology Corporation	77
The Hong Kong Institute of Architects & Authorised Registration Board	22	Pakatan Reka Arkitek	80
The Ogilvy & Mather Asia Pacific Regional Office	27	Shenzhen Yutu Fine Arts Company Ltd.	83
Funtastic International Inc.	32	Conoco	87
McDonald's China Development Company	37	Tak Design & Associates Ltd.	90
Seaboard Eastern Insurance Company Inc.	40	Nippon Telegraph and Telephone Corporation	93
Tektronix HK Ltd.	44	Sony Hong Kong	96
Nortel	48	Corporate Office in Taiwan	102
INS Consultants Ltd.	54	Creative Technology	106
The Gateway II Showsuite	59	Tourism Court	108
LCL Architects Ltd.	61	Fontworks	110
3Com Asia Pty Ltd.	64	Redoute Asia Ltd.	113

Residential

Harmony Garden	118	Gallop Gables Showhouse	172
3 Repulse Bay Road Clubhouse	120	The Hillside	177
Kei's House, Repulse Bay	124	Parkview	181
Avon Park	132	Angel Court	185
Residence in Tai Hang	138	Broadview Villa	188
Residence in Stanley	143	Residence in Ho Man Tin	191
Greenway Terrace	149	Duplex Apartment, Shouson Hill Road	194
37 Repulse Bay Road	154	Woodland Heights	198
Residence in Yang Meng San	160	Happy View Terrace	202
Wonderland Villas	168		



Corporate 办公室

粤海啤酒集团有限公司

Guangdong Brewery Holdings Ltd.

设计公司

伟安室内建筑设计有限公司

Design Firm

C&A Interior Architects & Consultants Ltd.

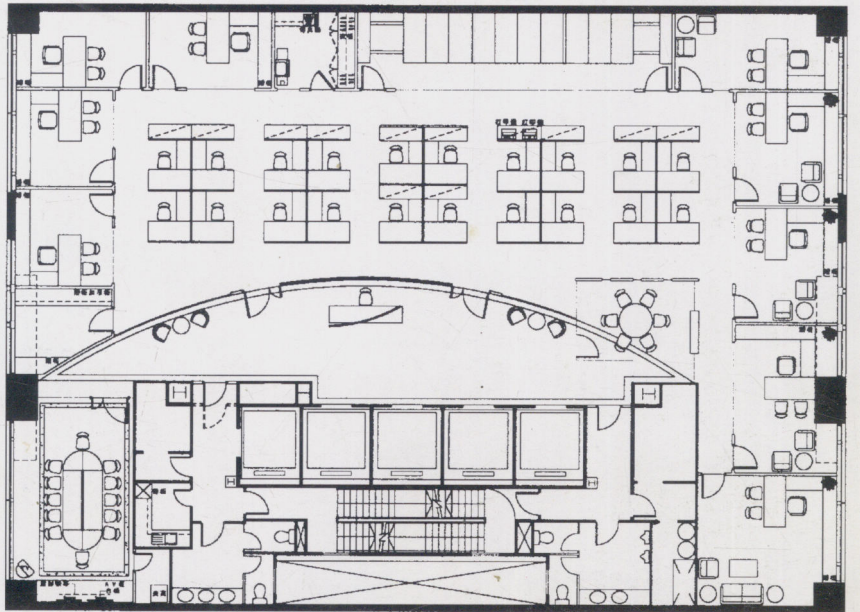
粤海啤酒集团有限公司的办公室面积约 465 平方米，继续采用母公司的形象为设计标准，但要有节制的保持线条简洁明亮。

接待处的弧形墙由玻璃、木材、石材互相交织垂直砌成。柔和的淡灰色调与 makore 木装饰融为一体，与间接照明一起对这个敞开式办公室起了强调作用。

The 465 sq. m. office continues the design standards established in their corporate office but in a low key tone with clean and simple lines.

The curved wall in the reception area has overlapping materials composed of glass, wood and stone on a vertical surface. The open office has as highlights indirect architectural lighting, and soft grey palette fused with makore wood finish.





粤海投资有限公司

Guangdong Investment Ltd.

设计公司

伟安室内建筑设计有限公司

Design Firm

C&A Interior Architects & Consultants Ltd.

粤海投资有限公司面积
积达 1858 平方米，由于
天花板高度有限，委托人
要求踏出电梯时必须给人
富有生气的感觉。占有两
层楼的办公室除了要有高
效率的流通外，在设计方
法和选材上也必须一致。

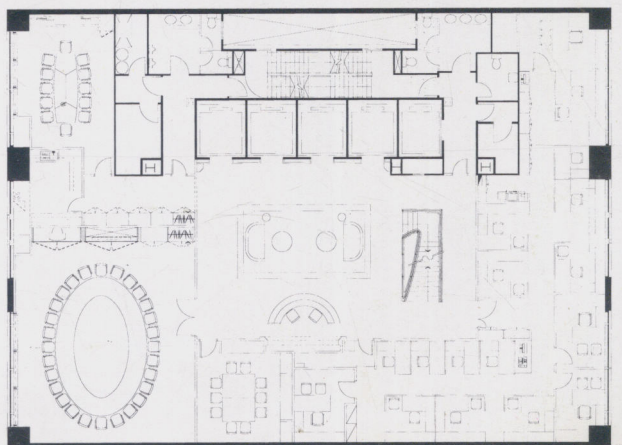
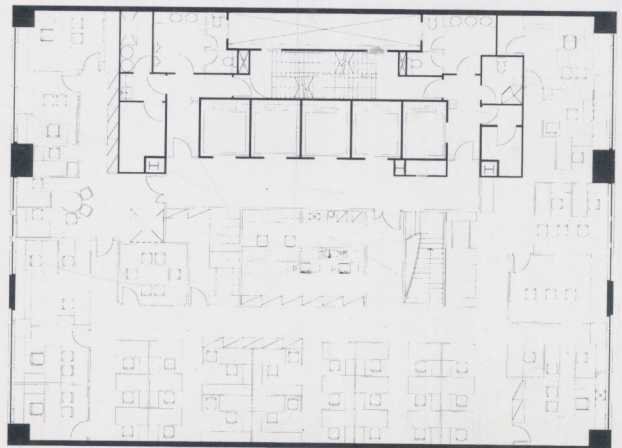
对设计组来说，最大
的挑战是必须处理高度较
低的天花板。为使办公室
产生一种宽敞的视觉效果
，设计师引进了天窗的
效应。大量使用木料、不
锈钢和玻璃，呈现出一个
井井有条又富有传统风格

的办公室。在接待处大
堂，公司标志镶在有庄严
深棕色大理石框的玻璃墙
上，十分突出，让来访者
产生一种受欢迎的感觉。

Guangdong Investment Ltd. occupies 1,858 square metres. The client required a dynamic approach straight from the lift while retaining the given ceiling height. The two-level office needed to have a consistent concept of design and materials as well as an efficient circulation.

A major challenge facing the design team was the relatively low ceiling height of the building. To generate a visually spacious office, a skylight effect was applied. The extensive use of timber, stainless steel and glass projects the feel of an organised and conservative corporate office. In the reception area, the corporate logo stands out against the glass wall framed with dark Imperial Brown Marble giving visitors a gesture of welcome.





荷兰银行

ABN-AMRO Bank

设计公司

达思

Design Firm

Davenport Campbell

荷兰银行新的亚洲总部位于新加坡，其内部设施无论是从美学还是功能方面来看都已达国际标准。

银行的新营业部面积超过 16704 平方米，容纳了荷兰银行的地区总部及其新加坡分行的办公室。

委托人要求尽用这新的 15 层楼营业部，不但要满足目前需求，而且还要具有灵活性。设计师把入墙家具减至最少，尽量选用不固定的家具、存档

和储存系统。为便于重新配置，工作台都以桌子为本，而不以面板为本，数据和供电的缆线都保持在被限制的网格之内。

营业部有一个底层零售营业大堂连同一个总营业柜台，外加整套装在一起的顾客服务桌，在这里，客户能面对面跟客户服务部主管交谈，在舒适和私密的环境中讨论他们的生意。营业大堂用格子花纹瑞士梨木分隔屏隔开，连同奶油色大理石、玻璃和钢铁，使空间具有

The Dutch multinational merchant bank, ABN-AMRO, has relocated its new Asian headquarters to Singapore. The facility boasts an interior of international standards, both in aesthetic and functional terms.

ABN-AMRO's new facility measures over 16,704 sq. m. and houses ABN-AMRO's regional head office and its Singapore branch office.

The client required optimal use of its new 15-storey facility, not only to meet its current needs but also to incorporate flexibility. The designers minimised the built environment within the building, opting wherever possible for loose furniture, filing and storage systems. For ease in



reconfiguring, workstations are desk-based, rather than panel-based, and data and power cabling has been kept within a confined grid.

The facility includes a ground floor retail banking hall, with a general banking counter in addition to self-contained customer service desks, which provides an area where clients can meet face-to-face with one of the Bank's client service officers to discuss their business in comfort and privacy. The banking hall features large dividing screens in Swiss Pearwood with a grid motif, together with cream marble, glass and steel, which gives the space a light, clean ambience. These finishes and the grid-motif screen have been repeated

throughout the facility, to give the entire space a coherent flow.

The Bank's conference centre is located on level 14 which houses several conference rooms, a video-conferencing centre, a large boardroom and an auditorium with capacity to seat 100. It also houses a commercial-scale kitchen and dining room. Many of the partitions within this floor are glass to allow natural light to reach the building core.

明亮和干净的氛围。这些装饰和格子花纹屏风在整个营业部里不断重复,赋予整个空间一种连贯的和谐。

银行的会议中心设在第 14 层,那儿有几间会议室、一个视像会议中心、一个大的董事会会议室和一个能容纳 100 人的礼堂。此外,还设有一个具商业规模的厨房和餐室。这层许多隔板都是玻璃的,以便引入自然光。







