

走向辉煌

山东大学附属中学复校二十周年



1983—2003

The Middle School Attached to Shandong University



同喜同贺

Collabration of Celebration Notes



永恒的伟岸

臧乐源

二〇一三年九月

LT0000487335.



G639.28
43

旭日东升 未来辉煌

热烈庆祝山东大学附属中学复校二十周年



目录

- From the Principal 校长寄语
- Brief Introduction of School 学校简介
- Quotes From the Government Leaders 领导题词
- The Past School Leaders School History 历任领导
- School History 历史回眸
- Future Developement 创新发展
- School Achievements 累累硕果
- Outstanding Teachers 教坛英豪
- School Life 校园文化
- Internationnal exchange Programs 友好往来
- Past Graduates 桃李芬芳
- Visits From Government Leaders 领导关怀
- Collabration of Celebration Notes 同喜同贺

The Middle School Attached to Shandong University

● 山东大学附属中学

From the Principal



校长：黄琳娜

校长寄语

仰泰山巍峨，承黄河雄风，沐齐鲁古韵，得改革天时，在这个收获着希望的美好季节，山东大学附属中学迎来了建校九十三周年复校二十周年华诞

这是一所具有深厚文化底蕴的著名中学。世纪教堂，是她的历史见证；百年山大，是她的教育摇篮。千佛山下的朗朗书声，趵突泉畔的谆谆教诲，伴随着一代又一代的莘莘学子，度过了多少美好的青春时光。九十三年，山大附中几经易名，数迁校址，饱经时局动荡，阅尽人间沧桑。但无论是黄海之滨，还是泰山脚下，无论是昨天的简陋校区，还是今天美仑美奂的校园，翻奏的是永远的青春弦歌，不变的是附中人奋发向上、锲而不舍的开拓进取精神：

近百年杏坛风雨，沐浴锦绣春晖，几万桃李芬芳，造就英才辈出。

新时期，复校后的二十年，坎坎坷坷、奋斗前进、开拓创新、快速发展、充满希望、硕果累累！

二十年辉煌的业绩，记载着创业者们筚路蓝缕、呕心沥血、不屈不挠、艰苦奋斗的开拓精神！

再回首，山大附中的发展历程，我们一直这样想：

同样类型的学校要有不一样的办学理念；不一样的服务意识；不一样的管理作风；不一样的育人环境；不一样的教学水平；不一样的素质质量。

同样的教育名称要具有不一样的教育内涵；不一样的师资队伍；不一样的教学情境；不一样的能力水平；不一样的培养效果；不一样的发展机会。

山大附中是奋进的熔炉，让你的追求插上奋飞的翅膀；

山大附中是求知的殿堂，让你的梦想在骄阳中展翅翱翔；

山大附中是开心的乐园，让你的心境在笑声中愉悦欢畅；

山大附中是一方圣土，定会让你的青春在朝霞中更加灿烂辉煌；

山大附中是一支绚丽的彩笔，定会让你多彩的人生在盛世里缤纷绽放……

学校如一首诗，山大附中就是一首波澜壮阔的史诗。学校如一首歌，山大附中就是一曲澎湃激昂的歌：“我们向往大海……我们向往高山……”的歌声嘹亮。学校如一幅画，山大附中就是一幅前景辉煌的风景画……

“舟大者任重，马骏者远驰”。山大附中将以她跨越式的进取精神和强大的办学实力与时俱进，努力谱写新世纪的辉煌。

黄河之水天上来，

奔流到海不复回！

让我们鼓起理想的风帆，向着更加辉煌的彼岸，坚定不移，启锚远航！



山东大学附属中学

与山大共进
铸名校风范

「学校简介」

山东大学附属中学是一所有着悠久历史的中学，最早于1910年由山东高等学堂增设附属中学开始，历经90余年，深厚的积淀与锐意进取的精神，使山大附中立于不败。80年代以后，她更以“校风好，教育教学成果优异”赢得了社会各界的赞誉。

山东大学附属中学东邻林木蓊郁的山大老校园，南近欧式风格的洪楼广场，享有良好的文化氛围和赏心悦目的育人环境。

学校具有现代化的教学设施。配有五个高标准理化、生实验室，一流的学术报告厅、多媒体教室、双向控制的闭路电视系统、微机室、语音室、多功能活动室等一应俱全。图书室、阅览室全天候对学生开放借阅，吸引着众多渴求知识的学子们。

山大附中引领风骚，立于不败，得益于先进的办学理念、高素质的教师队伍和科学、民主、人文、规范的管理方法。学校现有24个教学班，1460余名学生，正式教职工81人，专职教师56人。其中特级教师3人，高级教师20人，省级教学能手2人，区级教学能手1人，市学科带头人2人，具有本科学历的教师占90%以上，7人在职攻读硕士学位。

“山大附中”人称“状元的摇篮”，是对学校骄人成绩的肯定。近十年来，有4名学生获“中考状元”，97年及2000年均囊括济南市中考第一、二名，2000年及2002年济南市中考前十名中，山大附中均占其三。每年各竞赛赛获省级以上奖励近百人次。“因材施教，注重基础，培养能力，发展特长”成为学校的办学特色。

由于教书育人成绩显著，学校先后被评为“山东大学教书育人先进单位”、“山东省电化教育示范学校”、“历下区学科竞赛优胜学校”，被国家教育部确定为“中学数学实验教材实验基地”，并确定为“全国尝试教学实验基地”。2002年、2003年先后通过了“市级规范化学校”和“省级规范化学校”的达标验收。连续12年被评为历下区优秀学校和教书育人先进单位，2003年被评为济南市教书育人先进单位。

今天，山大附中校舍整洁、秩序井然，书声朗朗，笑语欢歌；明天，山大附中人才辈出，桃李芳华，发展拓新，更加辉煌。

Brief Introduction of School

An Introduction to the Middle School
Attached to Shandong University

The Middle School Attached to Shandong University (MSASU) is a school with a long history, 90-odd years having passed ever since it was founded in 1910 as a middle school attached to Shandong School of Higher Education. She has been more thriving with each passing day since she has an enterprising spirit and has accumulated rich experience and conspicuous achievements in education.

Closely west to the older campus of Shandong University with its luxuriantly green woods, and north to the Honglou Square shaped in an European style, the MSASU boasts an excellent cultural atmosphere and an educational environment which gladdens the heart and pleases the eye. The School is equipped with modern facilities of instruction, such as five high-standard laboratories of physics, chemistry and biology, and many first-class appliances, e.g. an academic lecture hall, multi-media classrooms, a two-way closed circuit TV system, microcomputer classrooms, sound labs, and a multifunctional room for activity. The library and reading room are open to students under an open-shelf system in all weather, attracting numerous students eager for knowledge.

The MSASU stands out among others since she benefits by advanced educational principles, a high-quality teaching staff, and scientific, democratic, considerate and normative office procedures. The School now has 24 classes, over 1460 students, a staff of 81 regular teachers and workers, including 56 full-time teachers. Of the whole staff there are 3 special grade teachers, 20 senior teachers, 2 expert teachers at the provincial level, 1 expert teacher at the district level, 2 leaders in special fields at the municipal level. Over 90% of the teaching staff have an undergraduate record of formal schooling and 7 are pursuing higher studies for master's degree on the job.

The excellent results of the School have been affirmed by the fact that she is called by many "A Cradle of Number One Scholars". In the recent ten years there were 4 students who won the honor of "Number One Scholar in the Entrance Test for Senior High"; the first and second places in the 1997 and 2000 municipal ETSH were all won by us; and there were 3 who were among the first 10 places in the 2000 and 2002 municipal ETSH respectively. Awards for competitions of various subjects are obtained by the students of this School at and above the provincial level nearly 100 man/time each year. It has become a feature of the School to "educate a person according to his natural ability, pay attention to laying a good foundation, heighten one's ability and develop one's special aptitude".

Since she has achieved outstanding results in imparting knowledge and cultivating people, the School has been honored "An Advanced Unit of Shandong University in Imparting Knowledge and Cultivating People", "A Model School of Shandong Province in Education with Electrical Audio-Visual Aids", and "A Victorious School in Disciplinary Contests in Lixiaqu District", and was established by the Ministry of Education as "An Experimental Base for Middle School Experimental Teaching Material of Mathematics" and "A National Experimental Base for Experimental Teaching Materials", and the years of 2002 and 2003 saw her successfully passing the examination for the standards of "A Standardized School at the Municipal Level" and "A Standardized School at the Provincial Level". For 12 consecutive years she has been given the honor of a first-rate school and an advanced unit in imparting knowledge and cultivating people in Lixiaqu District, and in 2003, the title of "An Advanced Unit of Jinan in Imparting Knowledge and Cultivating People".

Today, in the MSASU the students are learning in fine and clean schoolhouses and everything is in perfect order, with the sound of reading aloud and of smiling talks and happy singing perceived all the time; tomorrow, from the MSASU men of talents will go out in succession, with her future becoming more and more splendid on her way of developing and pioneering.

The Middle School Attached to Shandong University

● 山东大学附属中学

[领导题词]

Quotes From the Government Leaders

山东大学附属中学

植根百年深壤
马就世纪新篇

贺山东大学附中复校二十周年
乔语二零零三年十月

托起祖国明天的太阳。

乔语

2003.10

Quotes From the Government Leaders
 山东大学附属中学

祝贺山大附中复校20周年

继往开来 再创辉煌
 努力培养新一代

赵凌

2003.10.14

贺山大附中复校

厚德载物

自强不息

利之刚

二〇〇三年十月

[领导题词]

Quotes From the Government Leaders

山东大学附属中学

祝
賀
山
大
附
中
建
校
九
十
三
周
年

與
時
俱
進

爭
創
一
流

明順
九
月
廿
日

與
山
大
共
進

鑄
名
校
風
範

賀
山
大
附
中
復
校
廿
五
年
華
誕

張
華
二
〇
〇
三
年
九
月

历任领导

The Past School Leaders School History

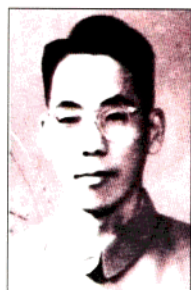
山东大学附属中学



华岗 (1952—1955任校长)



赵凌 (1952—1954任副校长)



邵平 (1952—1963任党支部书记)



张金珂 (1983. 10—1993. 6任校长)



尹约林 (1993. 10—1998. 12任校长)



黄琳娜 (1998. 12—至今任校长)



原党总支书记田宪东 (1984. 11—2001. 3)



党总支书记 赵平文 (2001. 3—至今)

山东大学附属中学历任领导



学术泰斗 季羨林

「历史回眸」

时代的变迁 历史的见证

The Middle School Attached to Shandong University

山东大学附属中学

The Middle School Attached to Shandong University

● 山东大学附属中学



华岗校长（后排左一）赵凌副校长（后排右一）与郝建秀（前排左一）合影



郝建秀（左三）与邵平书记（右一）和部分同学合影



速中校长与学生会委员

The Middle School Attached to Shandong University

● 山东大学附属中学

School History



速中学生毕业照



山大速中校门原址，现为红岛路入口处



风华正茂



1983年复校时校舍



1984年夏校舍



1987年新建教学楼

The Middle School Attached to Shandong University

● 山东大学附属中学