

# 金美

Achievements Of Jinmei In 25 Years

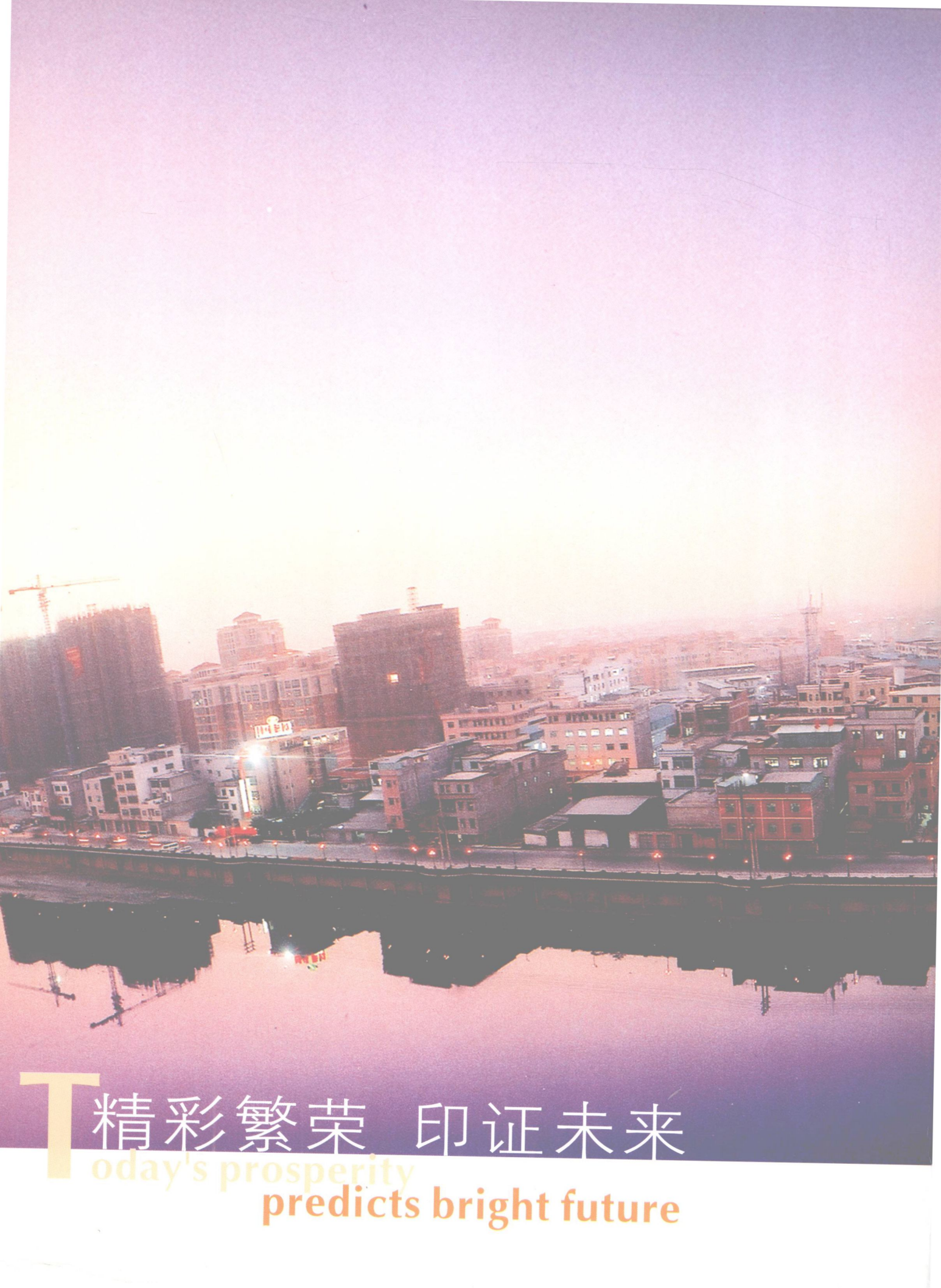
## 辉煌25年

1978-2003



Jinmei, Dongguan, China  
中国·东莞·金美





**T**精彩繁荣 印证未来  
Today's prosperity  
predicts bright future



# 金美 今美 明天更美

JinMei, Nice Today, Better Tomorrow



# 目 录

---

书 记 致 辞 .....	5
建 设 篇 .....	7
工 业 篇 .....	13
农 业 篇 .....	19
第三产业篇 .....	21
文教卫生篇 .....	27
保驾护航篇 .....	31
二次创业篇 .....	33
上级关怀篇 .....	37
金美荣誉篇 .....	39
招 商 篇 .....	41
金美带头人 .....	43
金美影像图 .....	45



# TABLE OF CONTENTS

---

Speech Made by Secretary.....	5
Construction .....	7
Industry .....	13
Agriculture .....	19
Tertiary Industry .....	21
Culture, Education and Health .....	27
Escorting .....	31
Start New Undertaking .....	33
Solicitude .....	37
Honors .....	39
Investment Invitation .....	41
Jinmei's Pacesetters .....	43
Jinmei's Pictures .....	45



## 任煜华

东莞市常平镇金美村党支书

东莞市常平镇金美村民委员会主任

金美实业发展公司董事长

Renyuhua

Secretary of Party branch of Jinmei Village, Changping Town, Dongguan City

Director of Villagers' Committee of Jinmei Village

Chairman of the board of directors of Jinmei Industrial Development Company





# 党支部书记、董事长 致辞

中国改革开放的25年是金美日益发展的25年。金美人披荆斩棘，把这片生生不息的故土建设成一个洋楼林立，工业发达，高度文明、高度城镇化的，现代化的工业园区。今天我们回首过去峥嵘岁月，不免豪情万丈！喜迎二次创业春天，再绘宏伟蓝图！

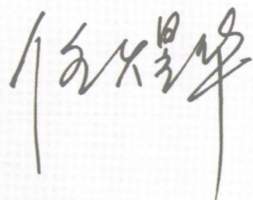
我们金美人秉承优良传统，坚决贯彻党中央发展社会生产力的英明决策，在党的领导下，在东莞市委市政府、常平镇委镇政府领导下，发扬不怕困难，迎难而上的奉献精神，发挥锐意改革，勇于创新的改革精神，朝着更高的目标前进！完成广东省委确定的率先基本实现现代化的宏伟目标。

在此，我谨代表常平镇金美村委向一直支持关心金美发展的各级领导，向曾经在这片热土奋斗，奉献青春的老领导，老同志，向投资金美的社会各界朋友，港澳台同胞，国际友人，表示衷心感谢！我们金美的领导班子，来自金美，服务金美，坚决实践“三个代表”，做到“立党为公，执政为民”，为金美的发展，金美的二次创业再创佳绩！金美，今美，明天更美！

今天，金美人迎来二次创业的春天，常平河西工业园（金美园区）的建设如火如荼，相信不久的将来，金美必将成为南中国的又一块投资沃土！在这片创业沃土上，您一定能实现创富梦想！

美丽的金美欢迎您，善良诚信勤劳的金美人欢迎您！

党支部书记：



In the past 25 years when china has carried out reform and opened to the outside, jinmei has enjoyed constant development. Jinmei people have blazed new trails and built their native land into a highly civilized, urbanized and modernized industrial park with numerous buildings and developed industry. Reviewing the achievements made in the past, we can not help being proud. In the future, we will start new undertaking and make new achievements!

Under the leadership of the party committee and government of dongguan city and changping town, jinmei people have followed good traditions, resolutely implemented the wise decision of the central committee of the party on developing social productive forces, fostered the dedication spirit of being fearless of difficulties and the reform spirit of being determined to carry out a reform and bold to make innovations and forged ahead toward higher target so as to take the lead in basically achieving the grand goal of modernization set by the party committee of guangdong province.

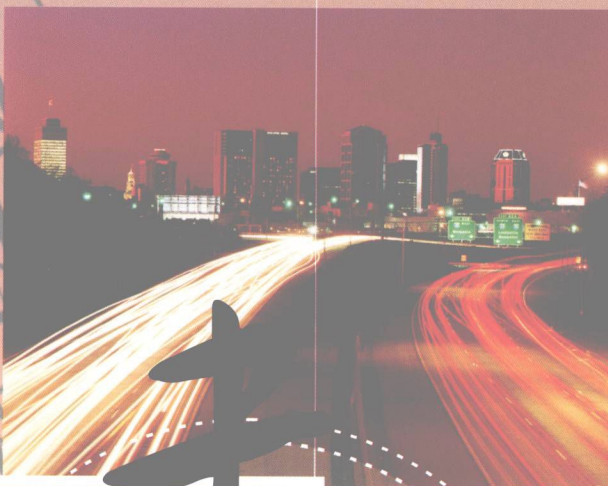
I hereby sincerely express heartfelt gratitude to the leaders of all levels who have cared for and supported the development of jinmei, the old leaders and comrades who once worked hard on and dedicated their youth to this hot land, the friends of all social circles, compatriots from hong kong, macao and taiwan and international friends who have invested in jinmei on behalf of the party committee of jinmei village, changping town. The leadership team of jinmei village comes from and serves jinmei. We will resolutely practice "three representatives", serve the people and make new achievements for the new development of jinmei. Today's jinmei is beautiful. It will be more beautiful tomorrow!

Today, jinmei people have started new undertaking and changping hexi industrial park (jinmei industrial park) is under busy construction. It is believed that jinmei will surely become another hot land for investment in south china in near future. You are certainly able to realize your dream of creating wealth on this hot land for business establishment.

Beautiful jinmei and kind, honest and laborious jinmei people welcome you!

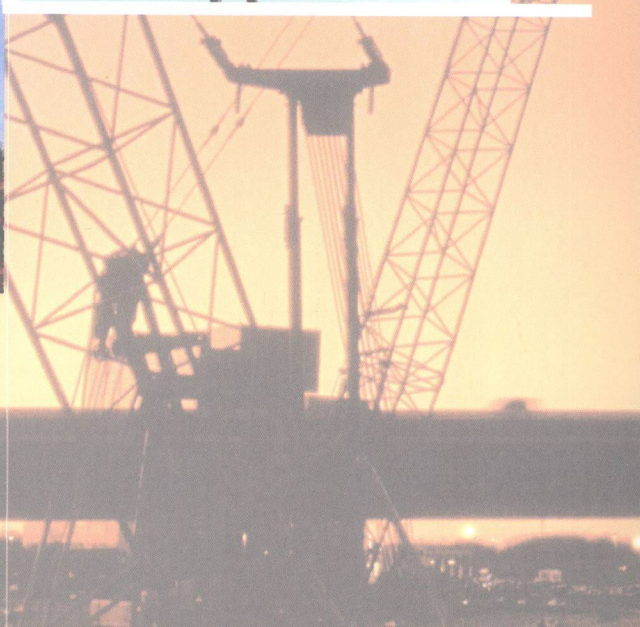


建设篇 *Construction*



Construction

# 建设篇







## 小区域大规划 小村庄大经济

金美人深知，对外招商的竞争其实就是投资环境的竞争。为此，党支部、村委会敢破敢立，敢作敢为，大手笔，大气魄，加强城市基础设施建设，营造良好投资环境，大力推进金美城镇化进程。

为了加强城建工作，金美先后投资2000多万元改善村道路、供电、供水及排污渠等基础设施，兴建了村级公路金美一路、金美二路，一河两岸工程使金河路成为一道亮丽风景线，常平大道通达四方，常平环城高速快线建成使用，使得金美的基础设施建设走在常平前列。

为了完善生活配套设施，村委会投资400多万元兴建了一个近20亩的金美公园，配套多种娱乐设施；投资600多万元兴建影剧院、图书馆；投资1000多万元建成金美综合市场；投资600多万元全面改建和扩建锡光学校，2002年学校被评为东莞市一级学校；投资100多万元扩建卫生站，配备先进的医疗设备。

### Small Region but Great Planning Small Village but Grand Economy

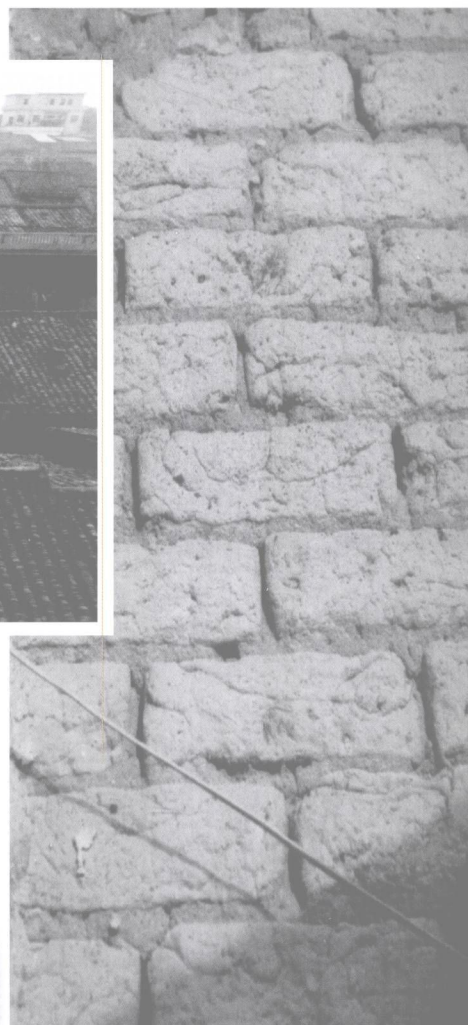
Jinmei people have deeply realized that the competition in investment invitation is actually the competition in investment environment. To this end, the Party branch and villagers' committee have dared to take active actions to strengthen the construction of urban infrastructure, create good investment environment and actively promote the progress of urbanization of Jinmei.

For strengthening city construction, Jinmei has invested over RMB 20 million in improving infrastructures including village roads, power supply and water supply facilities and pollution discharge ditches and building village-level highways including No. 1 Jinmei Road and Jinhe Road. The side banks renovation project has made Jinhe Road become a beautiful landscape. Changping Road extends to all directions. After the completion and use of Changping ring expressway, Jinmei has come out top in Changping in respect of construction of infrastructure.

For perfecting supporting living facilities, the villagers' committee has invested over RMB 4 million in building Jinmei Park covering about 20 mu and a great variety of supporting entertainment facilities, over RMB 6 million in building cinemas and libraries, over RMB 10 million in building Jinmei comprehensive market, over RMB 6 million in rebuilding and expanding Xiguang School (which was appraised as level-1 school in Dongguan in 2002) and over RMB 1 million in expanding sanitation stations and supplementing advanced medical equipment.

金美  
JinMei  
今美  
Nice  
明天  
Today  
更美  
Better  
Tomorrow





# 金美村旧貌

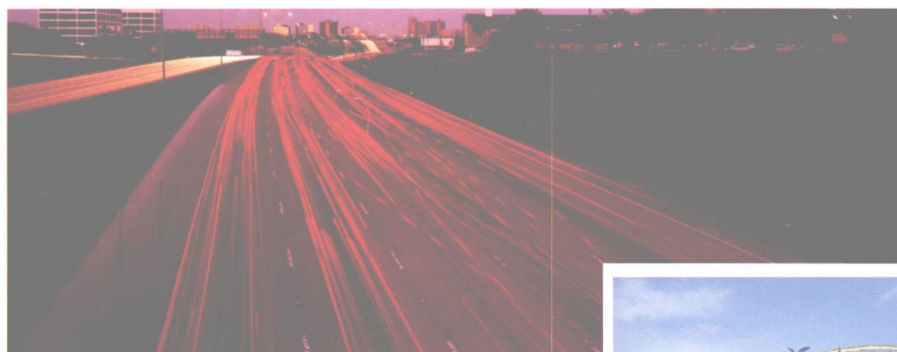
*jinmei village of the past*







金美 JinMei  
今美 Nice  
明天 Today  
更美 Better Tomorrow



常平环城高速快线金美段  
Jinmei section of changping ring expressway



村级公路（金美二路）  
Village-level highway (No.2 Jinmei Road)



常平大道金美段  
Jinmei section of Changping Road

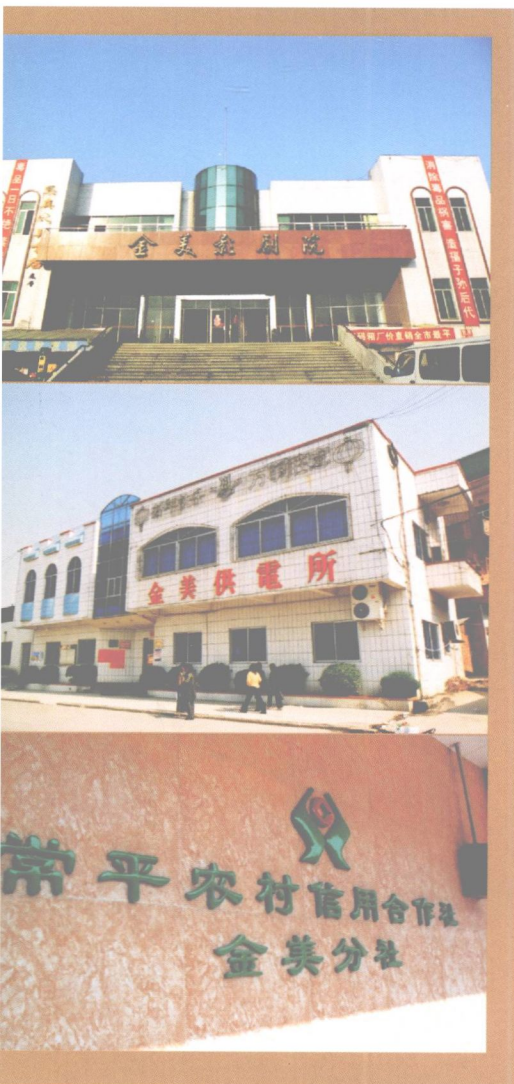


村级公路（金河一路）  
Village-level highway (No.1 Jinhe Road)



金美全貌  
Jinmei Panorama





金美花园会所  
Club of Jinmei Garden



金美图书馆  
Jinmei library

座落河西工业园(金美园区)的现代化办公大楼

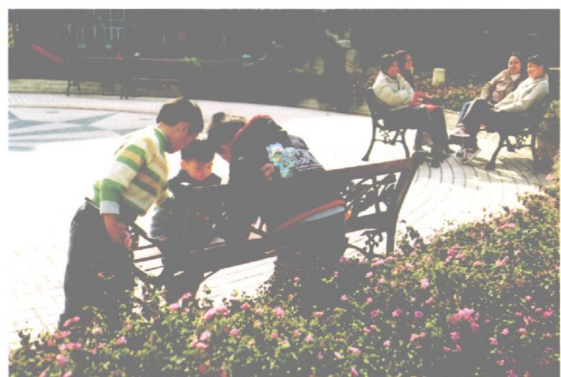
Modernized office building located in Hexi Industrial Park (Jinmei Industrial Park)







金美 JinMei  
今美 Nice  
今天 Today  
明天 Tomorrow  
更美 Better Tomorrow



金美生活一角  
One corner of Jinmei



金美公园  
Jinmei Park



金美综合商场

投资1000多万的金美综合商场，荟萃商业精华。商场经营品种齐全，为金美人营造了一个休闲购物小天堂。

Jinmei Comprehensive Store in which over RMB 10 million was invested has selected commodities and complete variety of goods and creates a recreation and shopping paradise for Jinmei people.



The background of the page features a large, stylized graphic of interlocking gears. A central globe is depicted with a grid of latitude and longitude lines. The gears are rendered in a metallic, golden-brown color with a 3D effect. The overall color palette is warm, dominated by oranges, yellows, and reds, with a soft, hazy background that suggests a sunrise or sunset. The title '工业篇' is written in large, bold, black Chinese characters. Below the first character '工', the word 'Industry' is written in a smaller, italicized font within a white rectangular box. The second character '业篇' is also in large black characters.

# 工业篇

*Industry*





1978年引进常平第二家外资企业开始，金美村党支部、村委会就积极引进

三来一补企业，外商投资企业、三资企业，努力培育民营企业发展，经过25年的锐意创新，金美村已经发展成现代化的工业园区。

为了稳住、吸引投资商，金美村一是投入重金，不断完善基础设施建设；二是提供快速、优质、便捷的政府服务；三是以厂房、土地或者资金形式入股，稳住大企业；四是村委会成立专门企业办，为外商提供贴心服务。

发展到今天，全村现有外资企业数十家，日益壮大的民营企业队伍更是以惊人的数字发展，目前已经有1000多家民营企业。在金美落户生根的有大型服装企业---香港金泰（拔萃针织厂）有限公司；大型高新企业---美国TYCO集团下属创宝达电器制品有限公司，英国澳利电器制品有限公司。

The Party branch and villagers' committee of Jinmei Village have actively introduced enterprises engaged in processing with imported materials and designs, assembling with imported spare parts and cooperation in compensation trade, foreign-invested enterprises and enterprises with foreign investment and made efforts to develop private enterprises since 1978 when The second wool weaving mill was introduced into Changping. After 25 years' bold innovation, Jinmei Village has developed into a modernized industrial park.

For keeping and attracting investors, Jinmei Village has made huge investment in constantly perfecting the construction of infrastructure, provided quick, high-quality and convenient governmental services and kept big enterprises by equity participation in the form of factory building, land or funds. The villagers' committee established special enterprise office to provide considerate services to foreign investors.

Today, the village has tens of foreign-invested enterprises. Private enterprises have developed at an amazing speed. At present, there are over 1000 private enterprises. The enterprises that have settled in Jinmei include Hong Kong Jintai (Bacui Knitting Mill) Co., Ltd., a large garment enterprise, and Chuangbaoda Electrical Appliances Co., Ltd., a big high-tech enterprise under American TYCO Group. Uk.aoli electronic production co, ltd.



金美  
JinMei  
今美  
Nice  
明天  
Today  
更美  
Better  
Tomorrow



图1: 香港金泰拔萃针织厂职工食堂  
Canteen for employees of Hong Kong Bacui Knitting Mill

图2: 在先进的生产线上工作的工人们  
Workers working on advanced production lines

图3: 香港金泰拔萃针织厂先进的工业大楼  
Majestic and advanced industrial building of Hong Kong Bacui Knitting Mill

图4: 常平第二家村级外商企业旧址  
The second village-level foreign-invested enterprise in Changping



河西工业园(金美园区)的现代化工业长廊, 统一规划的厂房排列有序, 吸引了更多海内外投资客商

The modernized industrial gallery of Hexi Industrial Park (Jinmei Industrial Park) and the factory buildings under unified planning which are arranged in order have attracted more domestic and foreign investors.







金美  
Lin Mei  
今美  
Nice  
明天  
Today  
更美  
Better  
Tomorrow

