

开放的重庆九龙坡区欢迎您  
The open Jiulongpo District welcome you

# 发展与投资

Development and Investment

中国·重庆·九龙坡区人民政府  
The People's Government of Jiulongpo District, Chongqing, China





区委书记：郑 洪



区长：秦 敏

**九**龙坡区地处长江与嘉陵江交汇的腹心地带，是重庆直辖市主城区之一，全市最大的工业基地和国家级高新技术产业开发基地。全区常住人口 87 万人，三分之二为城镇人口；幅员面积 437 平方公里，城镇建成区近 100 平方公里。2001 年，全区国内生产总值达 109 亿元，在重庆市区县位居第二，在西部地区区县名列前茅。区域内基础设施完善，城市功能齐备，发展潜力巨大，投资环境优良。

围绕西部大开发、面向未来，九龙坡区委、区政府提出了实施高新技术战略和城市化战略的决策，要求进一步增强我区城市生产、流通、服务三大基本功能，进一步发挥我区重庆市高新技术产业发展基地、重庆主城区西部地区交通枢纽和中国西部最大的生产资料集散地三大牵动功能。

欢迎各方朋友，各位有识之士来九龙坡区投资兴业，与我们携手共创明天的辉煌！

**S**ituated at the central confluence of Yangtze River and Jialing River, Jiulongpo District is one of the main districts of Chongqing municipality. It is the largest industrial base of the city and the country class high & new technologic industrial development base. With 870 thousand local residents—3/2 of the population are urbanite. The district covers 437 square kilometers in which nearly 100 square kilometers are area of upbuilt towns. In 2001, the GDP of the district was 10.9 billion RMB, which occupies the 2<sup>nd</sup> place among the districts of the municipality and highly ranks among the West counties and towns. With well built infrastructure the district's urban function is completed, so the district is of the huge development potential and favourable condition for investment.

Focusing on West development and facing the future, the CCP committee and the government of Jiulongpo District have decided to carry out the strategy of high & new technology and urbanization in the area, while enhancing three key functions—production, circulation and service, at the same time, get the utmost out of the district's three leading functions—new technologic industrial development base, mainly West transporting hub and the largest distributing center for material of production.

Welcome all friends of insight coming to Jiulongpo District to invest and build up your business. We would like to go toward a very bright future with you!



九龙广场夜景



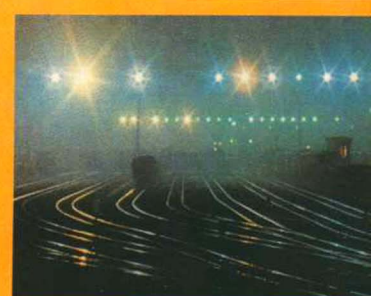
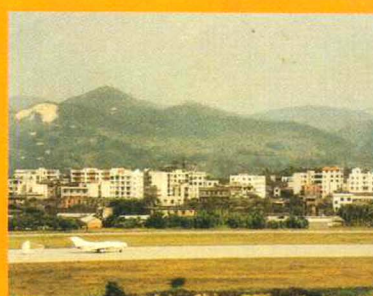
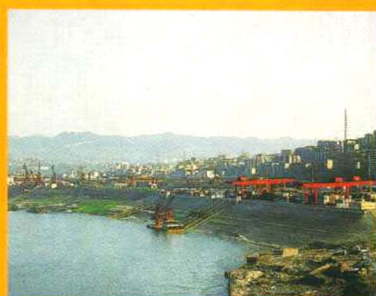
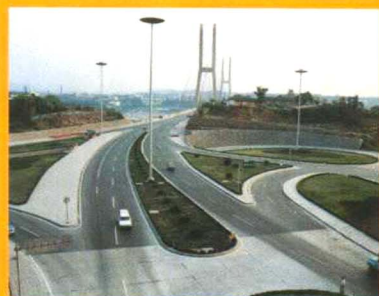
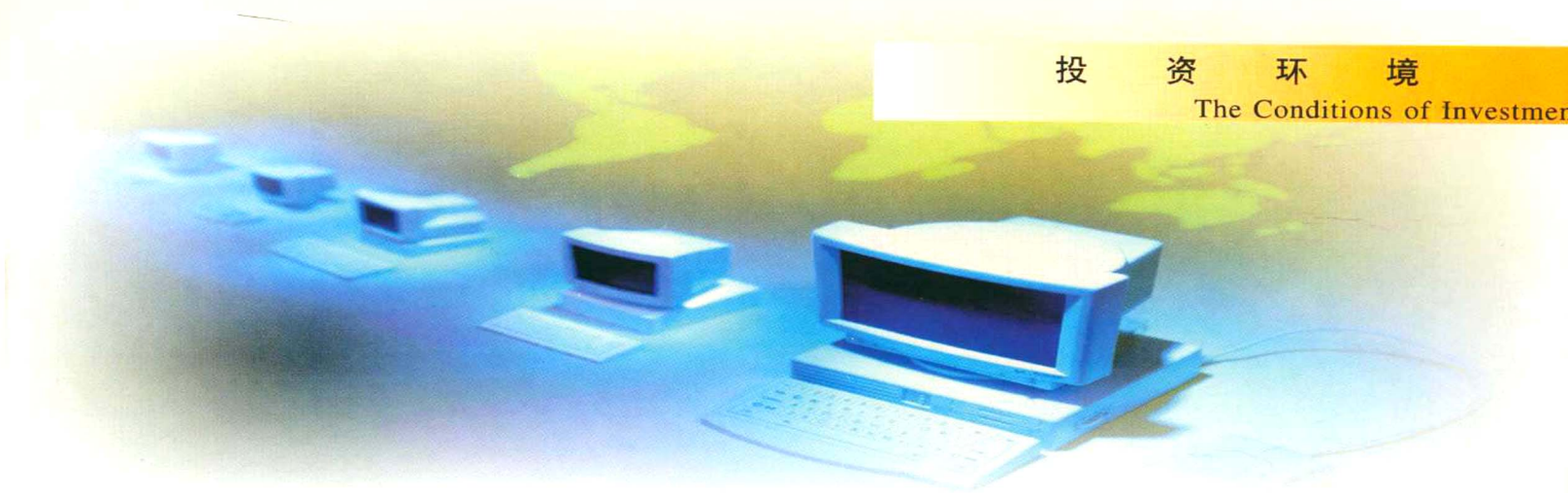
宏伟的鹅公岩大

# 九龙坡区产业布局

THE DISTRIBUTION OF INDUSTRY OF JUILONGPO DISTRICT



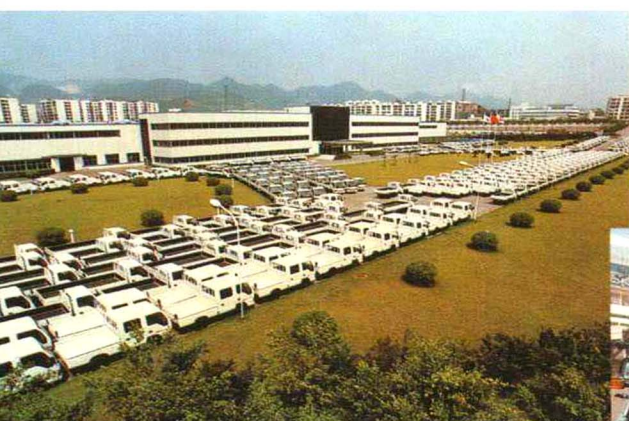








西铝生产车间



庆铃汽车



建设摩托生产线



铁马汽车生产线

高新技术

## 工业

九龙坡区是重庆市最大的工业基地，主导产业是汽车、摩托车及零部件制造业，支柱产业还有电子、冶金、食品等行业；拥有庆铃、铁马、建设、隆鑫、西铝、重啤等一批大型、特大型工业企业。

### Industry

Jiulongpo District is the largest industrial base. It's main manufacture includes automobile, motorcycle and their spare part. The pillar manufacturing industries include electron, metallurgy, foodstuff, etc. It owns the large-scale and super large-scale industrial enterprises such as Qinglin, Tiema, Jianshe, Longxin—the automobile and motorcycle manufacturers, Xilu—the aluminum material processing manufacturer, Chongqing Beer Group Ltd.Co.—the beer manufacturer.

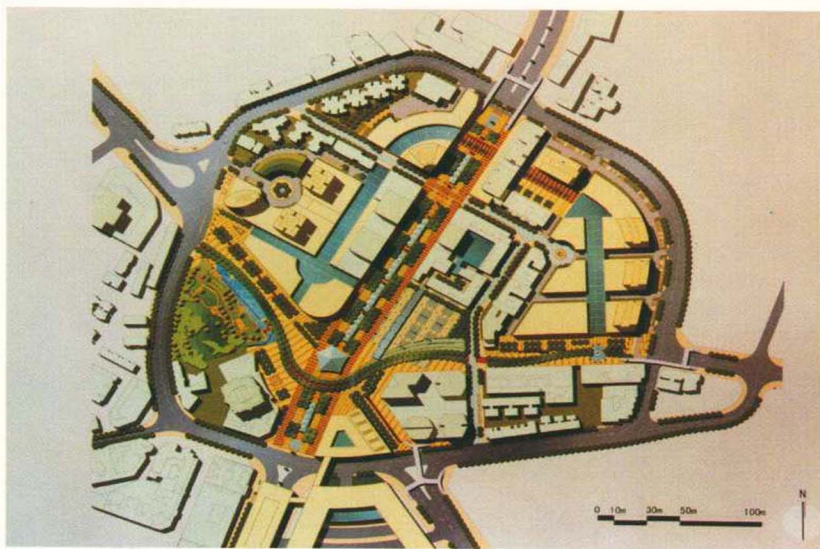


## 城 建

九龙坡区与渝中区接壤，整个区域为重庆都市发达经济圈范围。杨家坪、石桥铺是重庆主城区重要的中心片区，旧城改造、新区开发和小城镇建设如火如荼，城市功能升级、第三产业发展方兴未艾。

### Urban Development

Bordering on Yuzhong District, Jiulongpo District lies on the developed urban economic zone. Yangjiaping, Shiqiaopu are main branch districts in the city. The reconstruction of the old city and the development of the new area is proceeding like a raging fire. The city's function is upgrading, the third industry is now in the ascendant.



杨家坪步行商业区规划



美丽的九龙广场



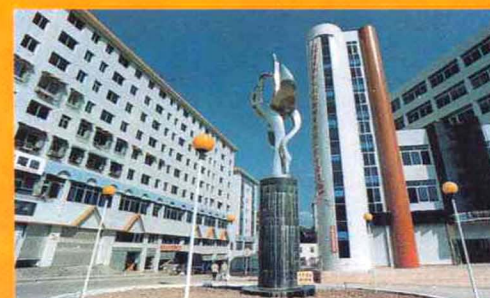
九龙坡区城市建设





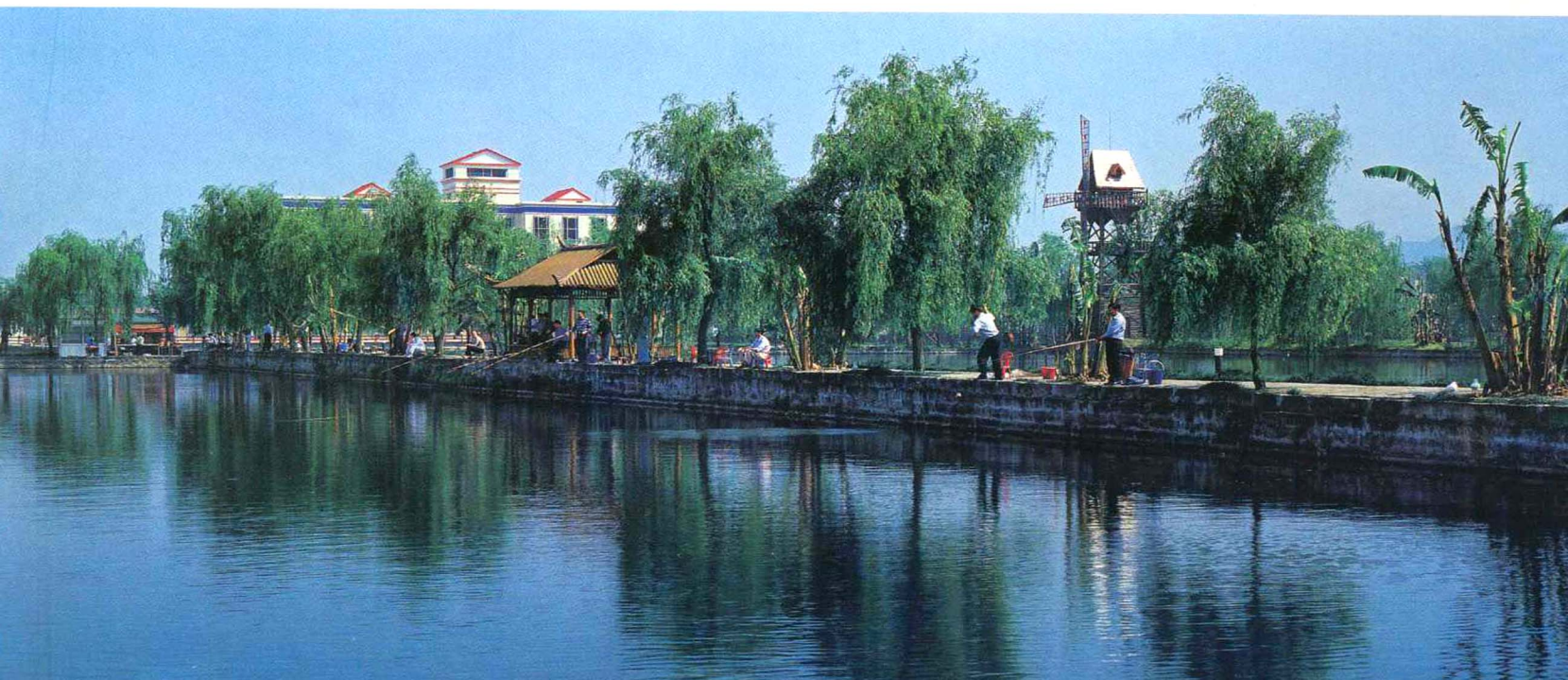


高新区科技孵化楼





# 都市旅游及观光农业





## 2 0 0 2 年 招 商 引 资 项 目

## The Projects for Attracting Investment in 2002

序号 NO.	项目名称 Title of the project	建设内容及规模 Items of the project	总投资 Sum of investment	合作方式 way sof cooperation
1	重庆市桃花溪综合治理工程项目 Chongqing Taohau Creek Comprehensive Dredging Project	桃花溪全流域生态环境综合整治工程 Comprehensive waterways dredging zoology project	47000	合资、合作、独资，提供低息或无息贷款 joint adventure, partnership, proprietorship, or low interest or non-interest loan
2	重庆市梁滩河（九龙坡段）综合治理工程项目 Chongqing Liangtan River (Jiulongpo section) Comprehensive Dredging Project	新建一座日处理2.5万吨污水处理厂，50吨、6吨垃圾处理厂各一座。 building a polluted water processing plant with 250 thousand tons / qd two waste processing plants with 50 tons/qd, 6 tons/qd	20000	合资、合作、独资，提供低息或无息贷款 joint venture, cooperation, providing low interest or non-interest loan
3	重庆市建设工业集团有限责任公司“建设码头”项目 Chongqing Jianshe Industrial Group Ltd., Co. "Jianshe Wharf" Project	扩建为具有10个泊位、10000m <sup>2</sup> 仓储库房、一台门式塔吊、货物吞吐量100万吨以上的货运码头 extend a wharf with 10 berths, a 10000 square meters storage and a gate tower crane	1082	合资 joint venture
4	重庆市西彭水厂项目 Chongqing Xipen Water Plant	10万立方米 / 日 100 thousand cube meters/qd	20000	合资、合作、独资 joint venture, partnership, proprietorship
5	重庆华岩经济园区基础设施建设 Infrastructure Project of Chongqing Huayan Economic Zone	规划面积3平方公里 3 square kilometers projecting	40000	合资、合作、独资 joint venture, partnership, proprietorship
6	重庆市铝都铝材交易市场 Chongqing Ludu Aluminous materials Trade Market	总占地面积5.5公顷 Occupies an area totally 5.5 hectares	14850	合资、合作 joint venture, partnership
7	重庆含谷镇“含湖老年公寓”新建项目 Chongqing Hangu "Han Lake Senior Citizen Boardinghouse" Project	占地50亩，建筑面积8000m <sup>2</sup> Occupies an area of 50 mu, with the buildings area of 8000 square meters	1500	独资、合作 proprietorship, partnership



## 2 0 0 2 年 招 商 引 资 项 目

### The Projects for Attracting Investment in 2002

序号 NO.	项目名称 Title of the project	建设内容及规模 Items of the project	总投资 Sum of investment	合作方式 way sof cooperation
8	重庆市白市驿乡镇企业工业园新建项目 Chongqing Baishiyi Town-owned Enterprises Industrial Zone Project	占地200亩新建工业园区 The new-building industrial zone occupied an area of 200 mu	15000	独资、合作、分零招商 proprietorship, partnership,
9	重庆北塔坪森林公园建设项目 Chongqing Baitaping Forest Park Project	森林公园建设 Forest park project	6000	合资 joint venture
10	重庆市团结湖旅游度假区开发项目 Chongqing Solidarity Luke Touring Zone Development Project	旅游度假开发 Touring zone development project	2270	独资、合资、合作 proprietorship, partnership, joint venture
11	重庆市华岩风景旅游开发区开发项目 Chongqing Huayan Landscape and Touring Zone Development Project	旅游开发, 用地规模: 107.96hm <sup>2</sup> , 其中风景区 70.62hm <sup>2</sup> 。 Touring development project with an area of 10796 square meters, occupies 7062 square meters for the parkland	28000	独资、合资、合作 proprietorship, partnership, joint venture
12	重庆市女儿丘十里荷塘休闲游乐新建项目 Chongqing Daughter Hill "Ten li Lotus Pool" Touring Zone Project	种植1000亩高产优质莲藕; 修建5000m <sup>2</sup> 休闲设施; 建4000m <sup>2</sup> 莲藕系列滋补食品加工厂 Planting 1000 mu high quality lotus, a 5000 square meters facilities for vacation, building a manufacturer for series of lotus products with an area of 4000 square meters	1300	合资、合作 joint venture, partnership
13	重庆市白市驿万头奶牛养殖及奶产品加工基地新建项目 Chongqing Baishiyi Ten-Thousand Cows Farm and Milk Processing Plant Project	新建奶牛养殖中心, 奶牛加工中心。 A center farm for producing 1650 cows, a center for processing milk product	6000	独资、合资、合作 proprietorship, partnership
14	重庆汽车研究所“铸态铝合金新材料技术开发”项目 Chongqing Automobile Institution's Alloy Aluminum in Wrought State Project	铸态铝合金生产 products of Alloy aluminum in wrought state	1200	合资、合作 joint venture, partnership



## 2 0 0 2 年 招 商 引 资 项 目

## The Projects for Attracting Investment in 2002

序号 NO.	项目名称 Title of the project	建设内容及规模 Items of the project	总投资 Sum of investment	合作方式 way sof cooperation
15	重庆猪鬃制品有限公司, 猪鬃制 品生产 Chongqing Bristles Products Ltd, Co.	年产猪鬃60吨 60 tons annual output of bristles	200	合资、合作、独资 joint venture, partnership, proprietorship
16	重庆福寿鬃刷厂, 猪鬃制品生产 Chong Fushou Bristles Brushes plant	年产猪鬃90吨, 制刷1000万 支 90 tons annual output of bristles, producing 10 million piece of brushes	300	合资、合作、独资 joint venture, partnership, proprietorship
17	走马桃花观光园 Zhouma Peachblossom Sihgtseeing Park	观光园基础设施建设 Infrastructure project	800	合作 partnership
18	金马湖旅游开发 Gold-Horse Lake Touring Project	基础设施建设, 旅游业建设 Infrastructure, facilities, building, touring industrial project	2000	合作 partnership
19	乐园水库旅游开发 Happy Park's Reservoir Project	基础设施建设 Infrastructure project	500	合作 partnership
20	新华印刷厂地块开发(杨家坪) Xinhau Printing plant's Real Estate Development Project(Yangjiaping)	占地4万m <sup>2</sup> Occupies an area of 40000 square meters		出让 Offering for sale
21	电子商务仓储配送中心 E-commerce Warehouse and Logis- tics Center	袁家岗现代化仓储中心占地 10000m <sup>2</sup> , 建筑面积10000m <sup>2</sup> a modern warehouse in Yuanjiagan, occupies an area of 10000 square meters	5000	合资、合作 joint venture, partnership



## 2 0 0 2 年 招 商 引 资 项 目

### The Projects for Attracting Investment in 2002

序号 NO.	项目名称 Title of the project	建设内容及规模 Items of the project	总投资 Sum of investment	合作方式 way sof cooperation
22	兵工综合大厦 Bingong Comprehensive Buildings	谢家湾商住楼开发, 占地 7860m <sup>2</sup> , 建筑面积 45300m <sup>2</sup> A trading buildings in Xiejiawuan, occupies a area of 7860 square meters, buildings occupies an area of 45300 square meters	5000	独资、合资、合作、 proprietorship, joint venture, partnership
23	陶家经济园区建设 Taojia Economic Zone Project	园区基础设施建设 Infrastructure	2000	合资 joint venture
24	金凤乡村旅游示范园区 Gold Phoenix Countryside Showing Touring Zone	占地约 100 亩 3 square kilometers projecting	500	土地出让项目可分解 the land offer for sale
25	重庆第一建材厂厂房设备招商 Chongqing Ludu Aluminous materials Trade Market	闲置厂房 52460m <sup>2</sup> , 闲置设备 The idle workshop of 52460 square meters, idle facilities	1380	租赁、合资、买断 by lease, joint venture, offer for sale
26	重庆龙土化工厂厂房招商 Chongqing Longshi Chemistry Factory's offering Workshop for Investment	闲置厂房 10150m <sup>2</sup> The idle workshop of 10150 square meters	1296	租赁、合资、买断 by lease, joint venture, offer for sale
27	渝州曲酒厂厂房设备招商 Yuzhou Winery's offering Workshop Attracting for Investment	闲置厂房 12906m <sup>2</sup> , 闲置设备 The idle workshop of 12906 square meters, idle facilities	262	租赁、合资、买断 by lease, joint venture, offer for sale
28	九龙坡冬笋服装厂厂房招商 Jiulongpo Bamboo-Shoot Clothing Factory Offering Workshop Attracting for Investment	闲置厂房 2000m <sup>2</sup> The idle workshop of 2000 square meters	700	租赁、合资、买断 by lease, joint venture, offer for sale



## 2 0 0 2 年 招 商 引 资 项 目

## The Projects for Attracting Investment in 2002

序号 NO.	项目名称 Title of the project	建设内容及规模 Items of the project	总投资 Sum of investment	合作方式 way of cooperation
29	重庆白市驿九里湖综合开发项目 Chongqing Baishiye Nine li Lake's Comprehensive Development Project	乡村度假旅游, 占地205亩 the facilities for countryside touring, occupies an area of 205 mu	1500	独资、合资 proprietorship, joint venture
30	真菌类生物杀虫剂生产项目 Eumycetes Biologic Pesticide Producing Project	年产纯孢粉500吨, 成品制剂3000吨, 生物有机农肥3000吨 annual output of pure-spore powder 500 tons, crystal product 3000 tons, organic manure 3000 tons	2250	合资、合作 joint venture, partnership
31	重庆九龙园区高科技公园 Chongqing Jiulong Zone's High Technology Park	占地1,300亩 occupies an area of 1300 mu	15000	独资、合资、合作 proprietorship, joint venture, partnership
32	重庆市长海生态旅游区青少年科普基地项目 Chongqing Changhai Zoologic Touring Zone's Youths Popular Science Base Project	用地29亩, 建设科普中心、展览馆、配套运动场、游泳池等设施 occupies an area of 29 mu, building a popular science center, a exhibition hall, a playing field with the facilities, a swimming-pool and other facilities	1000	独资、合资、合作 proprietorship, joint venture, partnership
33	九龙坡区黄家码头旧城片区改造招商项目 Jiulongpo Huangjia Wharf's Reconstruction of the Old City Project	20公顷片区旧城改造 a section of the city with an area of 20 hectares	9000	整块或分块出让 whole or pieces of the land offering for sale
34	白市驿至西彭公路经营权转让 Baishiye to Xipen Highway Running Rights Transferring	23.5公里公路经营权转让 transferring 23.5 kilometers highway Running rights	18000	出让 offer for sale
35	九龙科技园区B区地块出让项目 The Infrastructure of Section B in Jiulong Zone	首期开发面积3560亩 occupies an area of 3560 mu	44500	整块或分块出让 whole or pieces of the land offering for sale

招商单位：重庆市九龙坡区发展计划委员会  
(重庆市九龙坡区人民政府招商局)

联系人：胡巾英 潘友

电 话：(86 23)68423818 68440240

传 真：(86 23)68782469

网 址：[//www.jlp.gov.cn](http://www.jlp.gov.cn)

Units for Attracting Investment:

Chongqing Jiulongpo Development and Planning Committee (The Bureau for Attracting Investment under Chongqing Jiulongpo District People's Government)

Please contact with: Hujinying Panyou

Tel: (86 23)68423818 68440240

Fax: (86 23)68782469

[Http://www.jlp.gov.cn](http://www.jlp.gov.cn)



中国 · 重庆 · 九龙坡区人民政府

The People's Government of Jiulongpo District, Chongqing, China

地址：杨家坪西效路 27 号

Add:No.27 xijiao road, yangjiaping

邮编：400050

Postcode:400050

电话：(86 23)68423818 68440240

Tel:(86 23)68423818 68440240

传真：(86 23)68782469

Fax:(86 23)68782469

Http://www.jlp.gov.cn