

火力发电厂与电力网

# 管道支吊架 生根结构典型图

部件典型设计

66ZD

水利电力部  
西北电力设计院

1966年3月

电焊条，搭接处的焊缝高度，不超过构件厚度的1.2倍。

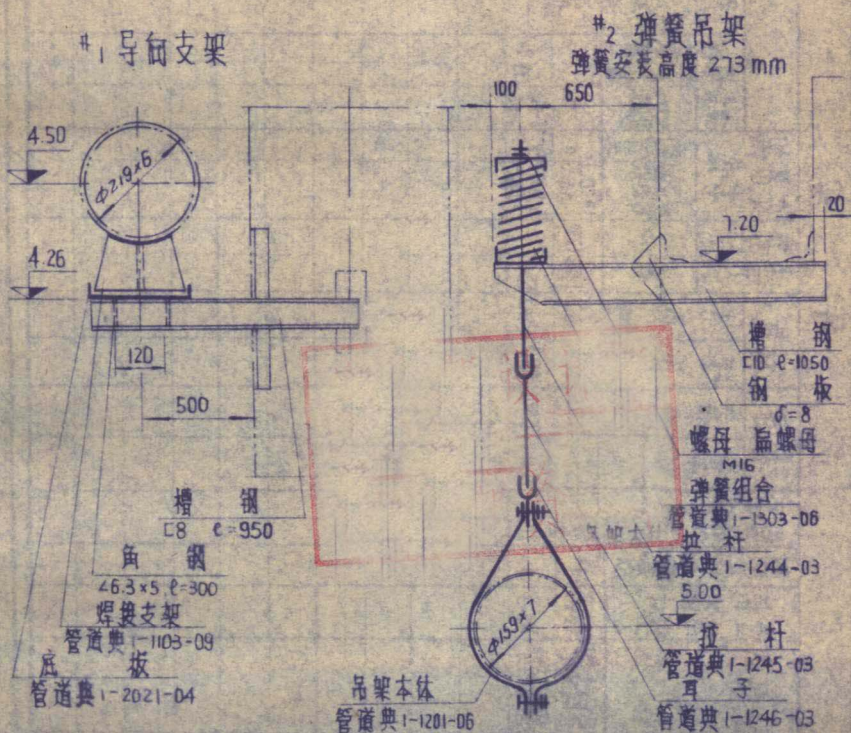
2. 拉杆每节不超过2米，若超过时中间加耳子。

3. 钻孔 $\phi$ 比拉杆直径 $d$ 大2毫米。

4. 弹簧的安装高度根据支吊架一览表所载数值调整。

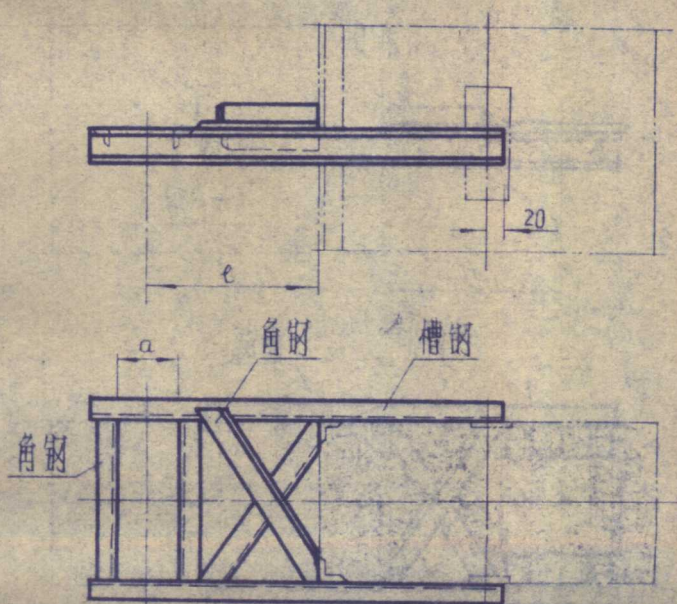
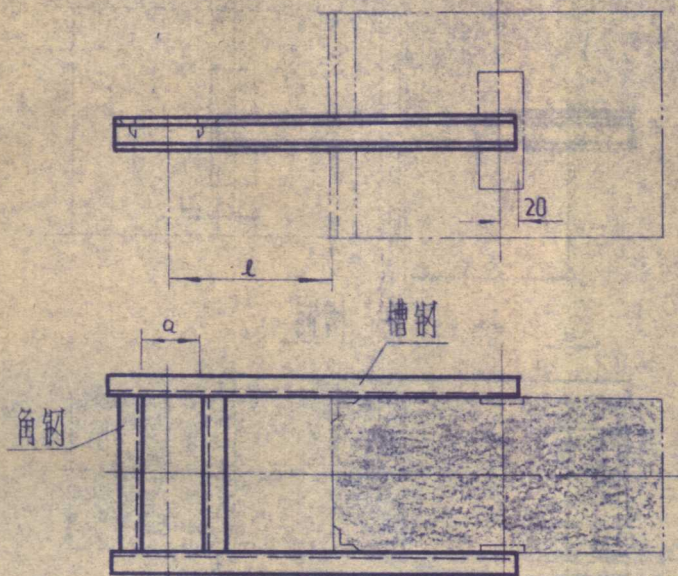
七. 使用示例：

如管道布置图中需要装设#1导向支架及#2弹簧吊架。型式如下图，表达方式如以下支吊架一览表



2011/10/09

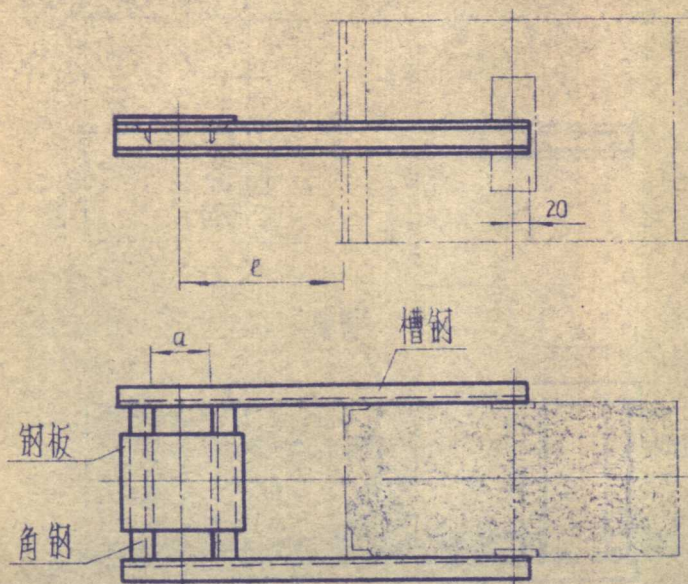




Z003

普通支吊架生根结构典型图

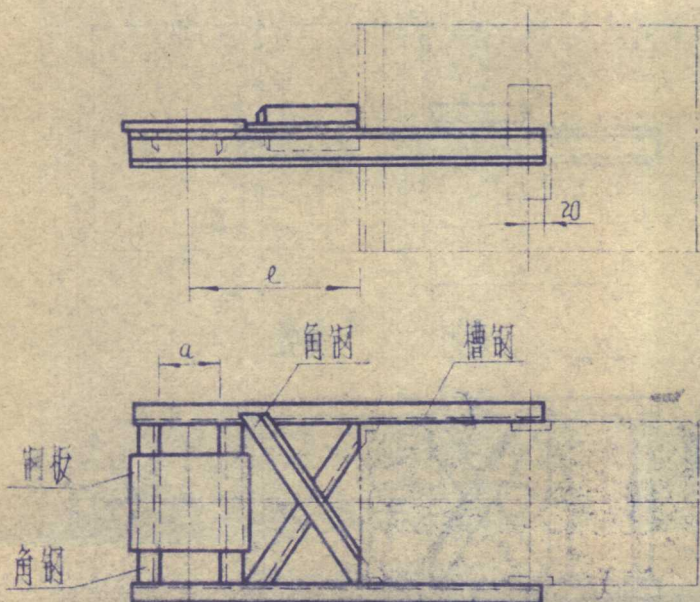
西北电力设计院

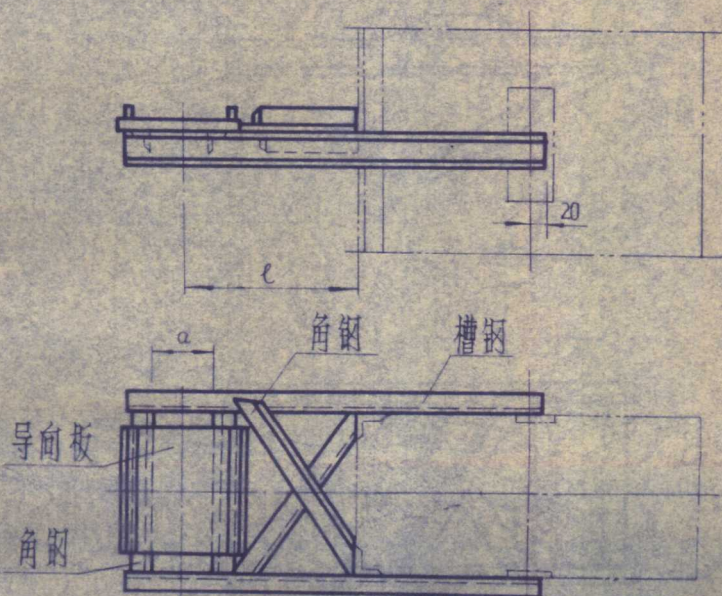
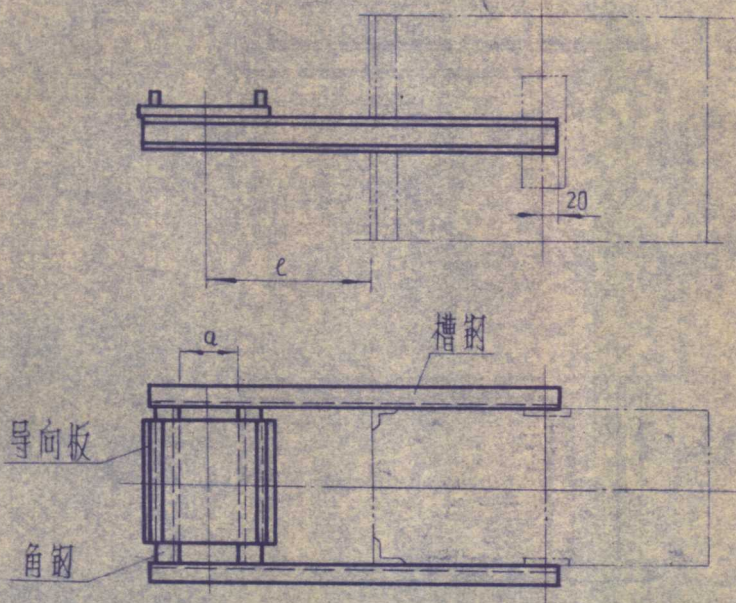


Z004

管道支吊架生根结构典型图

西北电力设计院

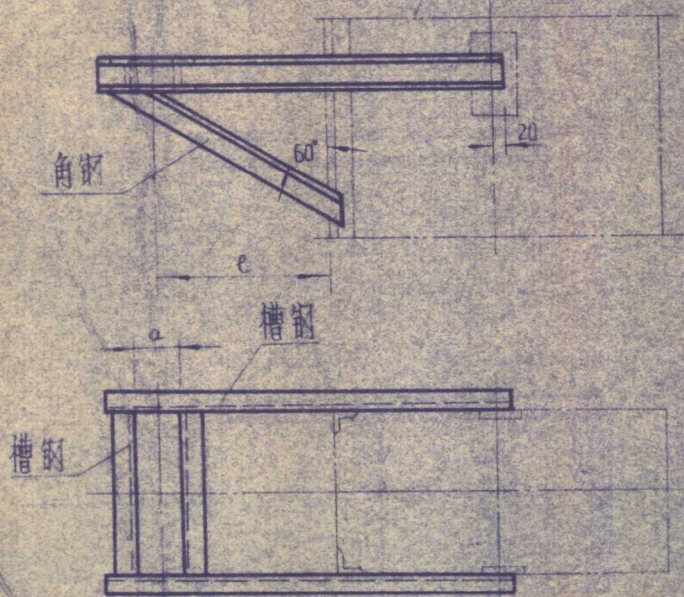




Z007

管道支吊架生根结构典型图

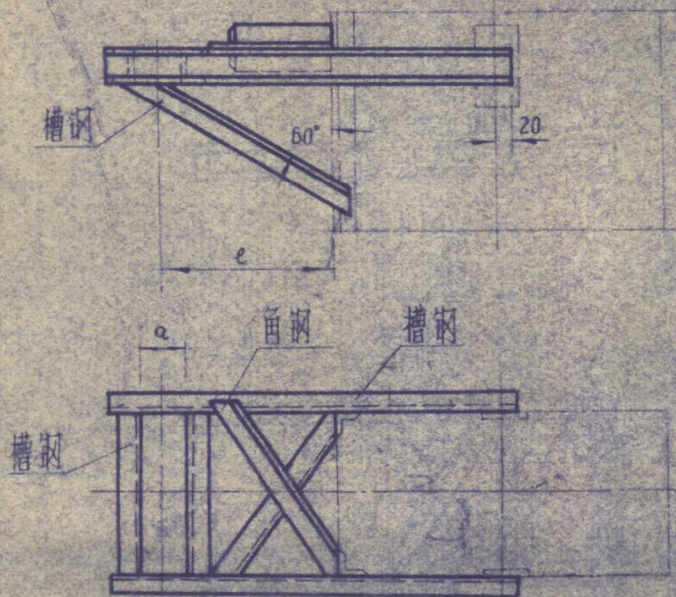
西北电力设计院

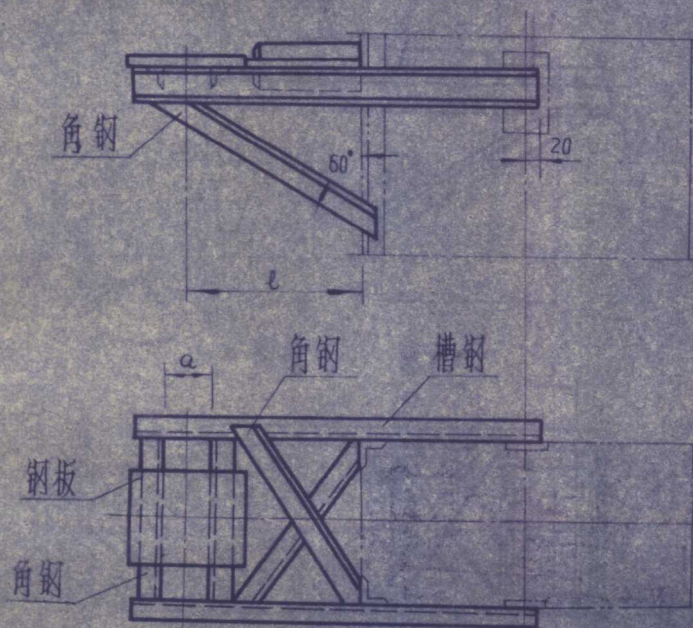
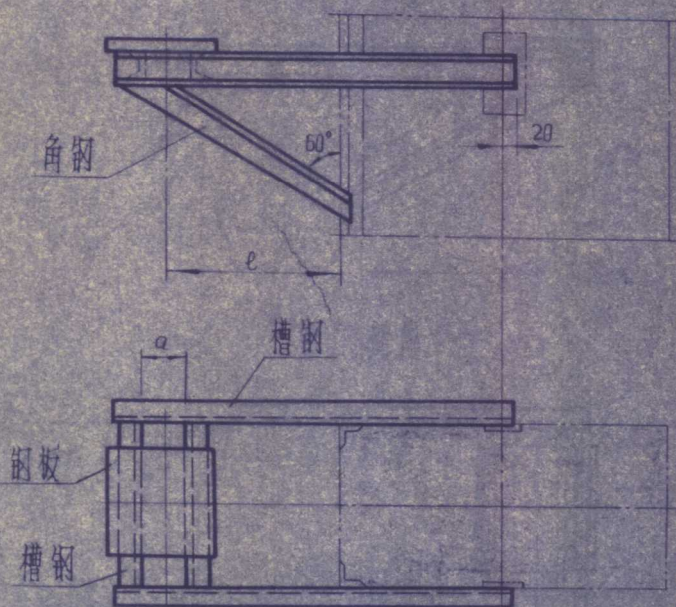


Z008

管道支吊架生根结构典型图

西北电力设计院



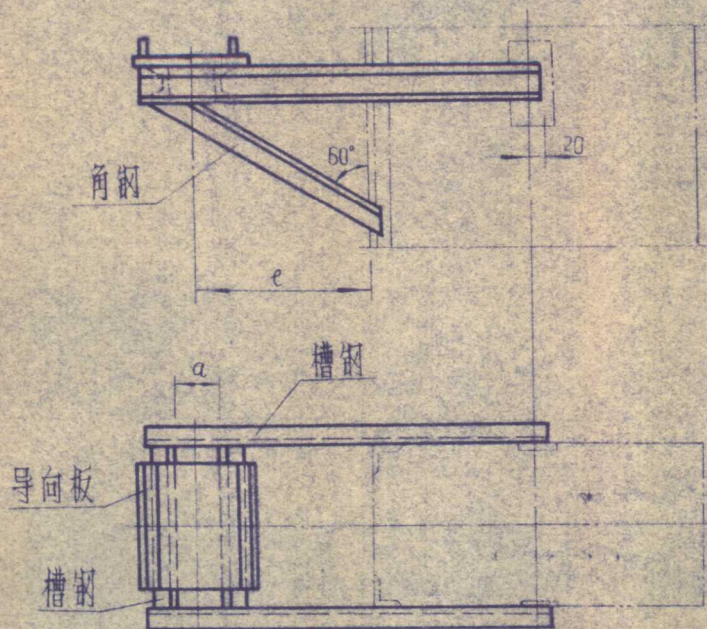




Z011

管道支吊架生根结构典型图

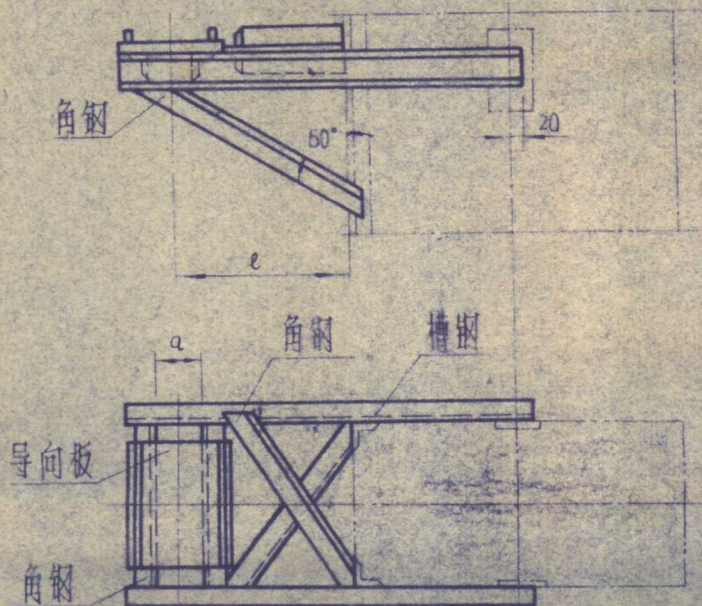
西北电力设计院

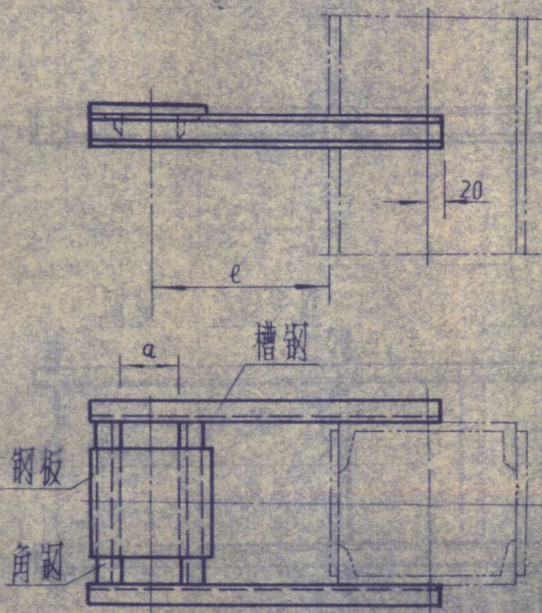
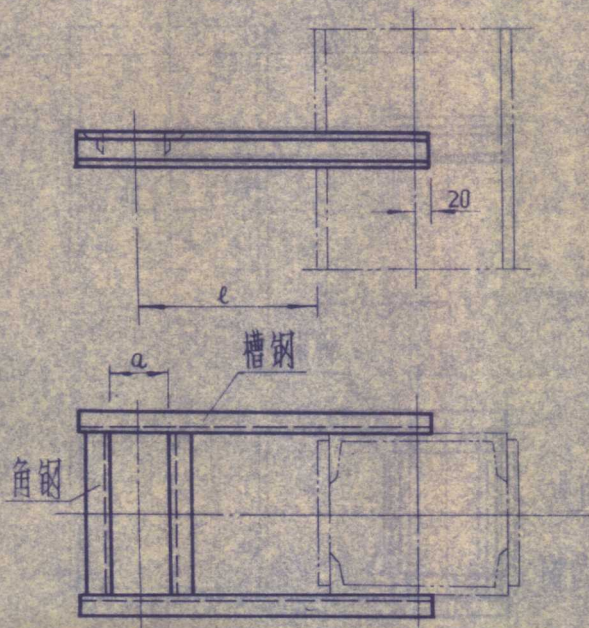


Z012

管道支吊架生根结构典型图

西北电力设计院

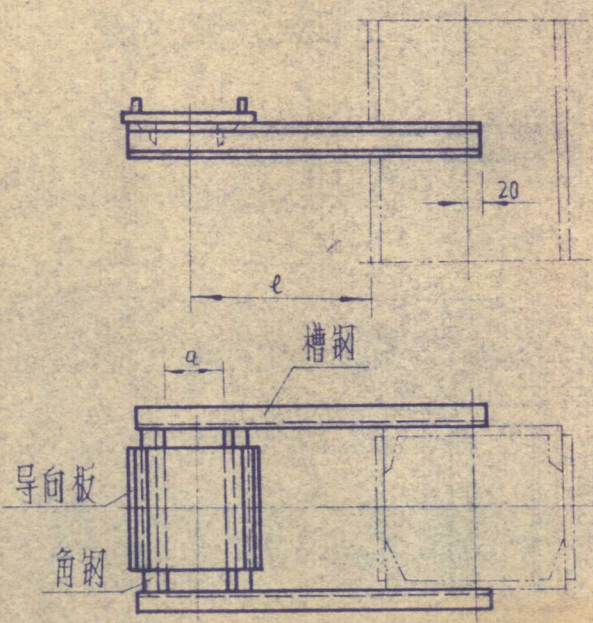




Z015

管道支吊架生根结构典型图

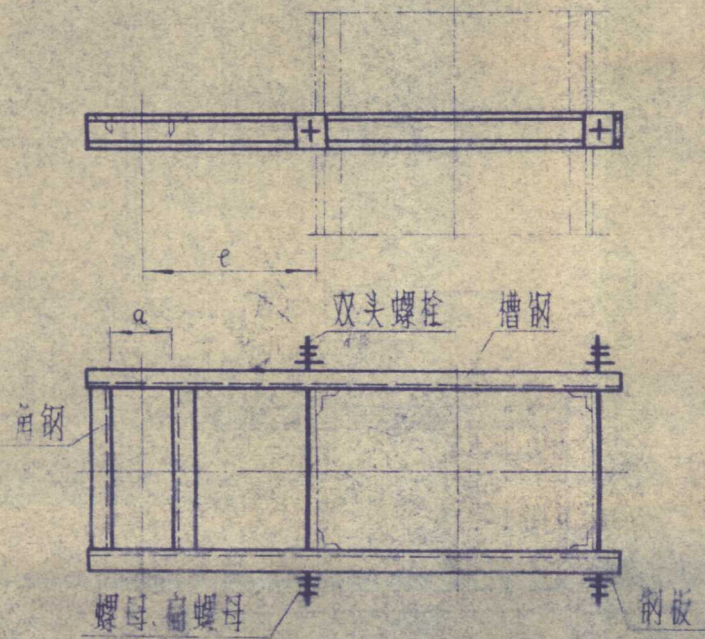
西北电力设计院

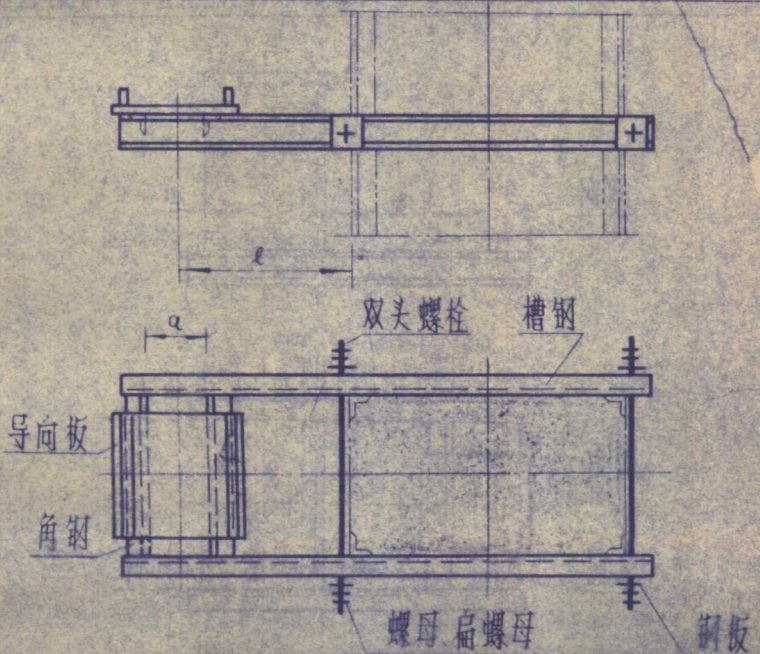
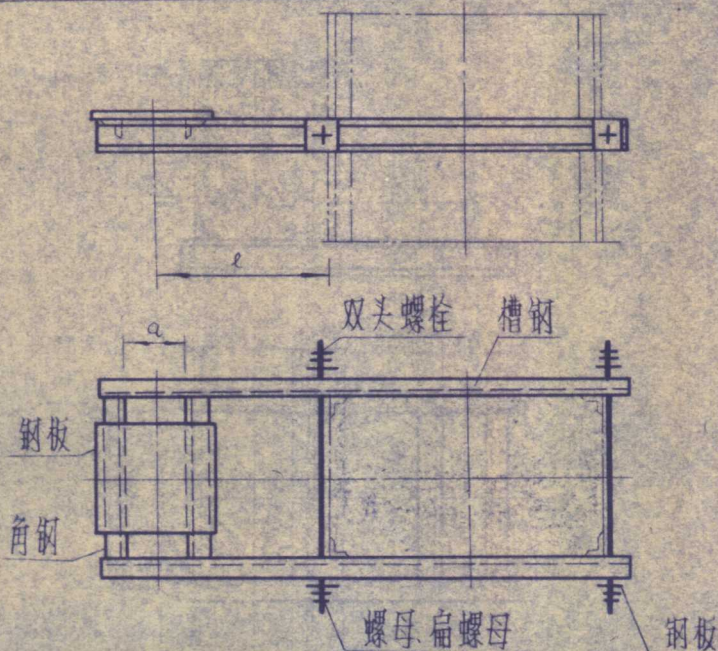


Z016

管道支吊架生根结构典型图

西北电力设计院

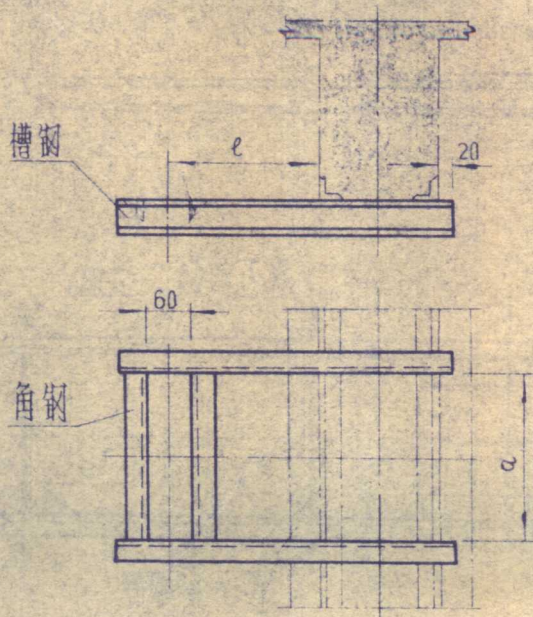




Z019

管道支吊架生根结构典型图

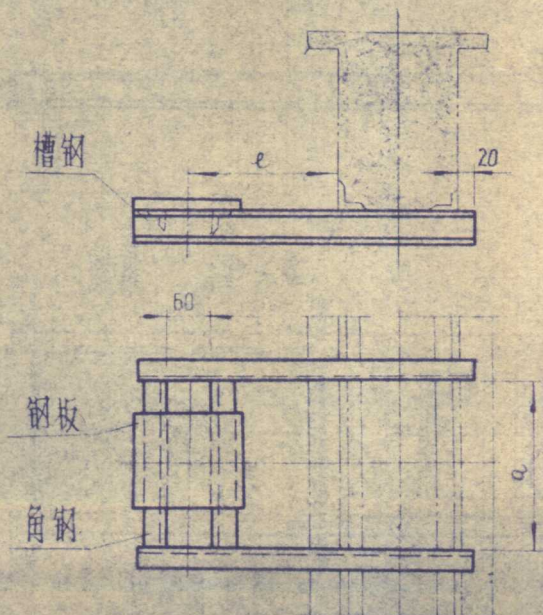
西北电力设计院

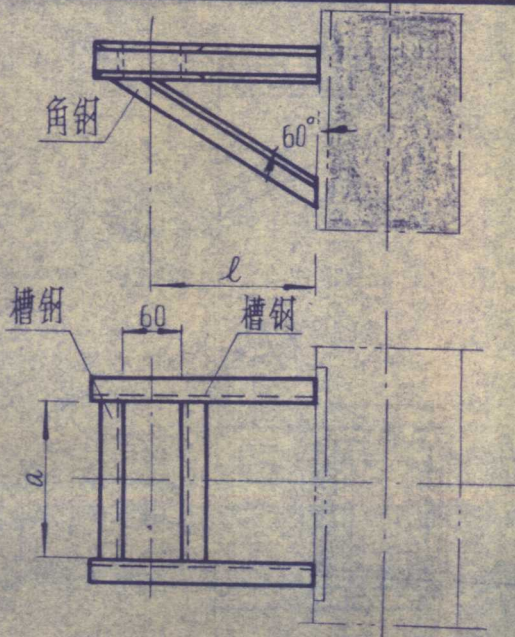
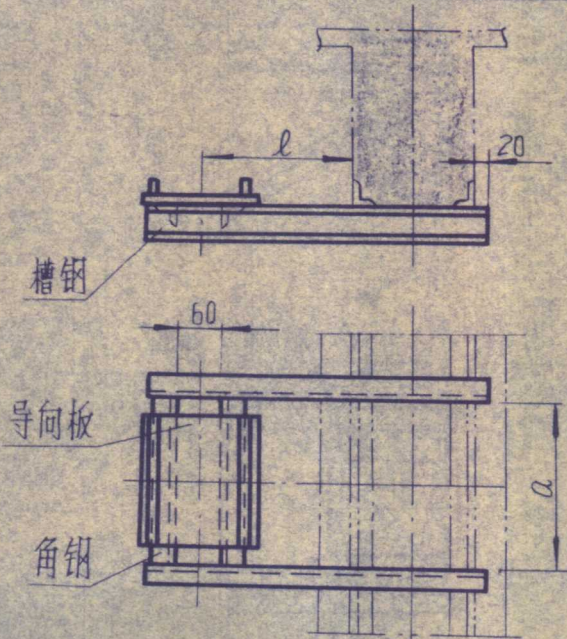


Z020

管道支吊架生根结构典型图

西北电力设计院

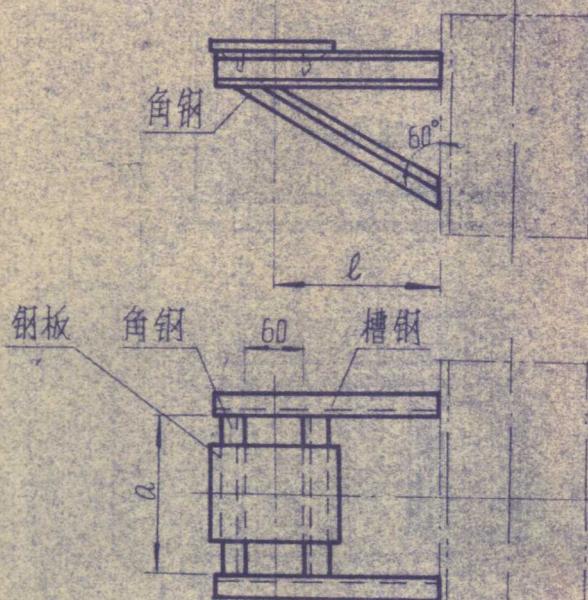




Z023

管道支吊架生根结构典型图

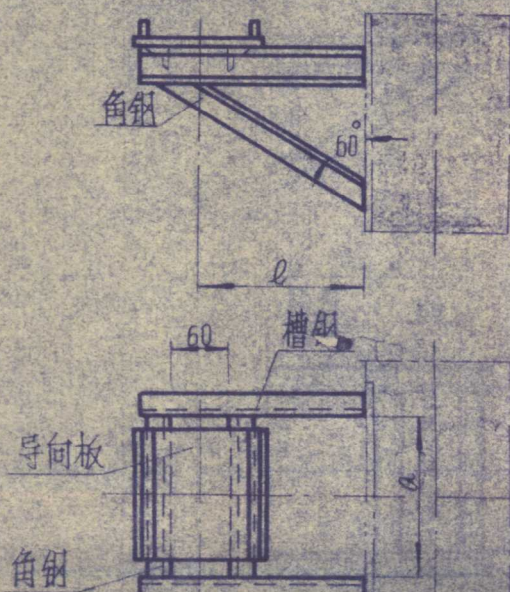
西北电力设计院

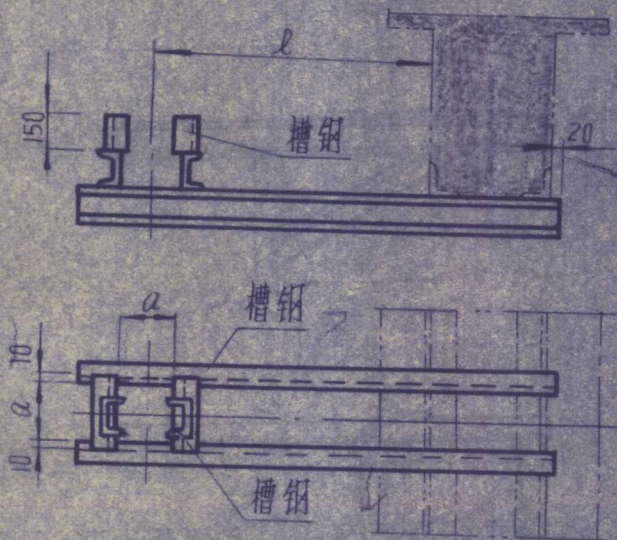
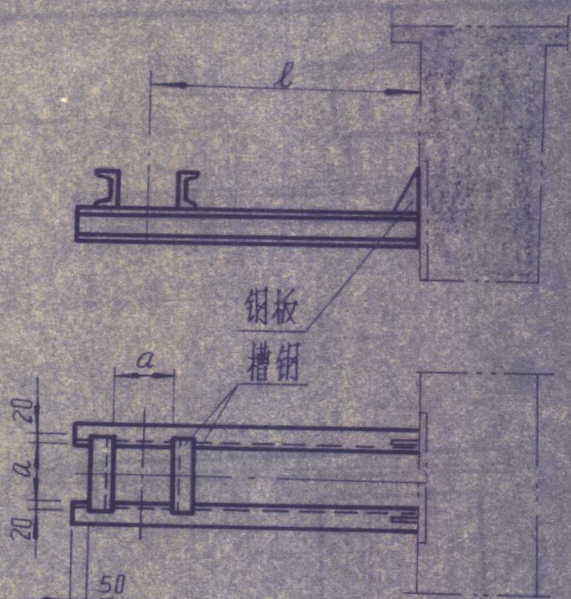


Z024

管道支吊架生根结构典型图

西北电力设计院



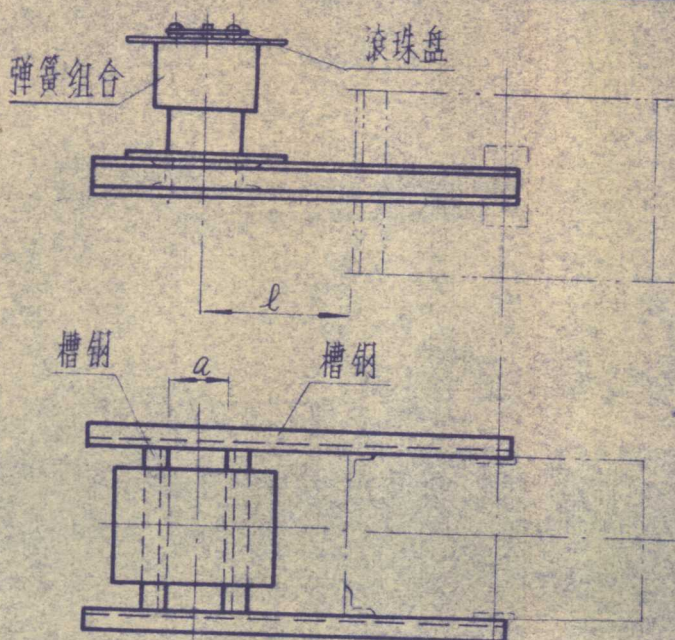




ZD27

## 管道支吊架生根结构典型图

西北电力设计院



Z028

## 管道支吊架生根结构典型图

西北电力设计院

