



中國當代藝術家畫庫

翁祖亮



中國畫報

出版社



畫家像 Weng Zuliang

畫家翁祖亮1929年生於浙江省建德縣。1952年畢業於中央美術學院華東分院(今浙江美術學院)。曾任美術編輯,現為浙江書院畫師、中國美術家協會會員、中國美協浙江分會理事、副研究館員、浙江美術評論研究會理事、浙江中國人物畫研究會成員。原學油畫,後改畫中國畫。曾從師林風眠先生,並得席德進之輔導,探索中西融合之藝術道路。擅長表現蘇州農村生活和傳統戲劇人物,造型與用筆、用色有自己的特點。作品曾在國內外展出,1989年出訪德意志聯邦共和國,講學並展出作品,德國《奧格斯堡日報》曾發表其代表作,有的作品被國外收藏。1988年曾參加臺灣《雄獅》美術舉辦的兩岸文化人士筆談文化交流。歷年來發表的美術評論文章和美術專業方面的譯著十幾萬字,大都為國內重要美術刊物或美術出版社所刊用,評論文章有自己獨到的見解與深度。

Weng Zuliang was born in Jiande County, Zhejiang Province in 1929. He graduated from the Central Academy of Fine Arts, East China Branch (now the Zhejiang Academy of Fine Arts) in 1952. He used to be an art editor. Now he is a painter at the Zhejiang Academy of Painting; associate research fellow; member of the Chinese Artists' Association (CAA); council member of CAA, Zhejiang Branch, the Zhejiang Society of Art Criticism and Research and the Zhejiang Society for Study of Chinese Figure Painting.

Originally, he studied oil painting, then started to learn Chinese painting. He was once a student of the great painter Lin Fengmian, and received guidance from Xi Dejin. He has opened up his own style by combining Chinese and Western art. He is good at expressing the country life of Suzhou and characters from local operas. His works were selected for quite a few exhibitions at home and abroad. In 1989, he was invited to give lectures and exhibit his paintings in Germany. One of his exhibits was even introduced in the *Augsburg Daily*. Some of his works have been collected by foreign countries. In 1988, he attended a conversation-by-writing on culture exchange between Taiwan and the mainland, sponsored by a Taiwan art periodical *Lion*. His criticisms and translations on art, of more than ten thousands of words, have been published by some popular art periodicals and art publishing houses. His articles possess original ideas and profound insight.

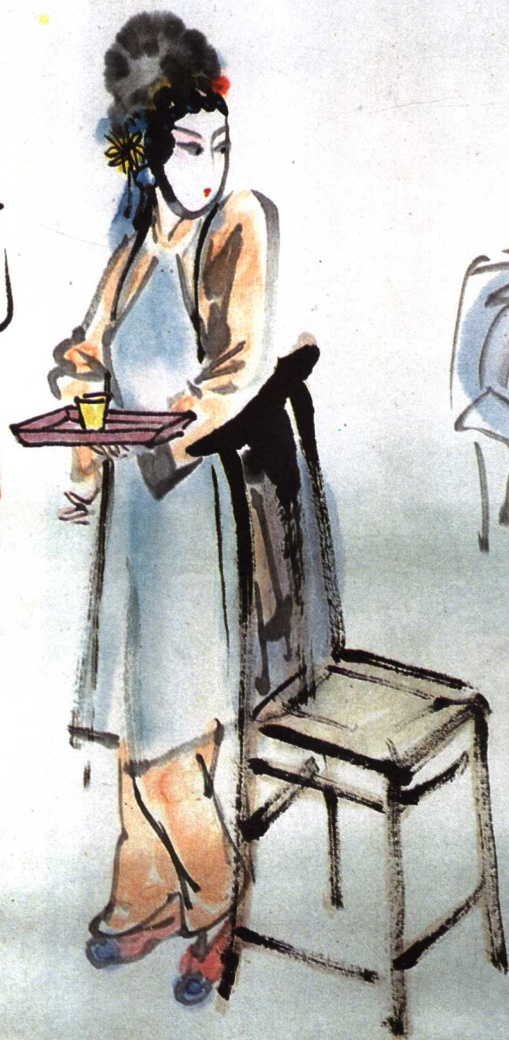
封面: 送銀燈 (46×69cm)
Front cover: *Candlelight*.



小丑
(46×
69cm)
A Clown.

帝皇們的意思
 不自由而又自由
 拈花惹草是回風
 流小民倘敢致尤
 便是萬惡淫為首
 嗚呼君莫差錯
 龍戲鳳艷多
 正德皇帝
 搔首弄姿
 博取台下
 萬千觀眾
 笑呵呵

錄茅盾詩句 甲子年 祖亮畫記



烏龍院
 (46×69cm)
 Wulongyuan,
 Beijing bpera.

秋江
 (69mm×88cm)
 Qiujiang,
 Beijing opera.





殺惜 (69×80cm)
Song Jiang Kills His Concubine, Beijing opera.

人生寄世
 碧落子
 小女愁邊
 香怕贈
 老姬得報
 傷心事
 拾得情
 歸人
 無人



拾玉鐲 (46×69cm)

Picking Up a Jade Bracelet, Beijing opera.

贵妃醉酒

甲子年祖亮写



救裴 (69×69cm)
Li Huiniang, Beijing opera.



貴妃醉酒 (46×69cm)
*A Drunken Imperial
 Concubine, Beijing opera.*



母與子
Mother and Child.



河埠頭 (69×69cm)
At the Ferry.

遐思
乙丑年初夏
程亮画于杭州



遐思 (46×69cm)
In Reverie.



祖夏子





磨場上 (46×69cm)
On the Threshing Ground.

舞 (46×69cm)
Dancing.



蘇州村婦
A Village Woman of Suzhou



汲水图
Drawing Water.

TREASURES OF CONTEMPORARY CHINESE PAINTING

ISBN 7-80024-105-X/J.106