

# 中國當代藝術家畫庫

楊 文



中國畫報 出版社



畫家像 Zhou Ruiwen

封面：破裂的石獅子 (68×74cm) 1991年  
Front cover: *Broken Stone Lions*.

周瑞文，中國浙江海鹽人。15歲考入浙江美術學院，師從杰出油畫家王流秋、全山石、馬玉如等教授，長達九年的深造，他勤於創作，長於吸收，他的畫，有《今日報頭》、《刊頭集》。他現在是中國美術家協會會員，浙江畫院特聘畫師，浙江省錢江晚報社美術攝影編輯室主任，協會理事，浙江油畫研究會理事，杭州市美術家協會常務理事。

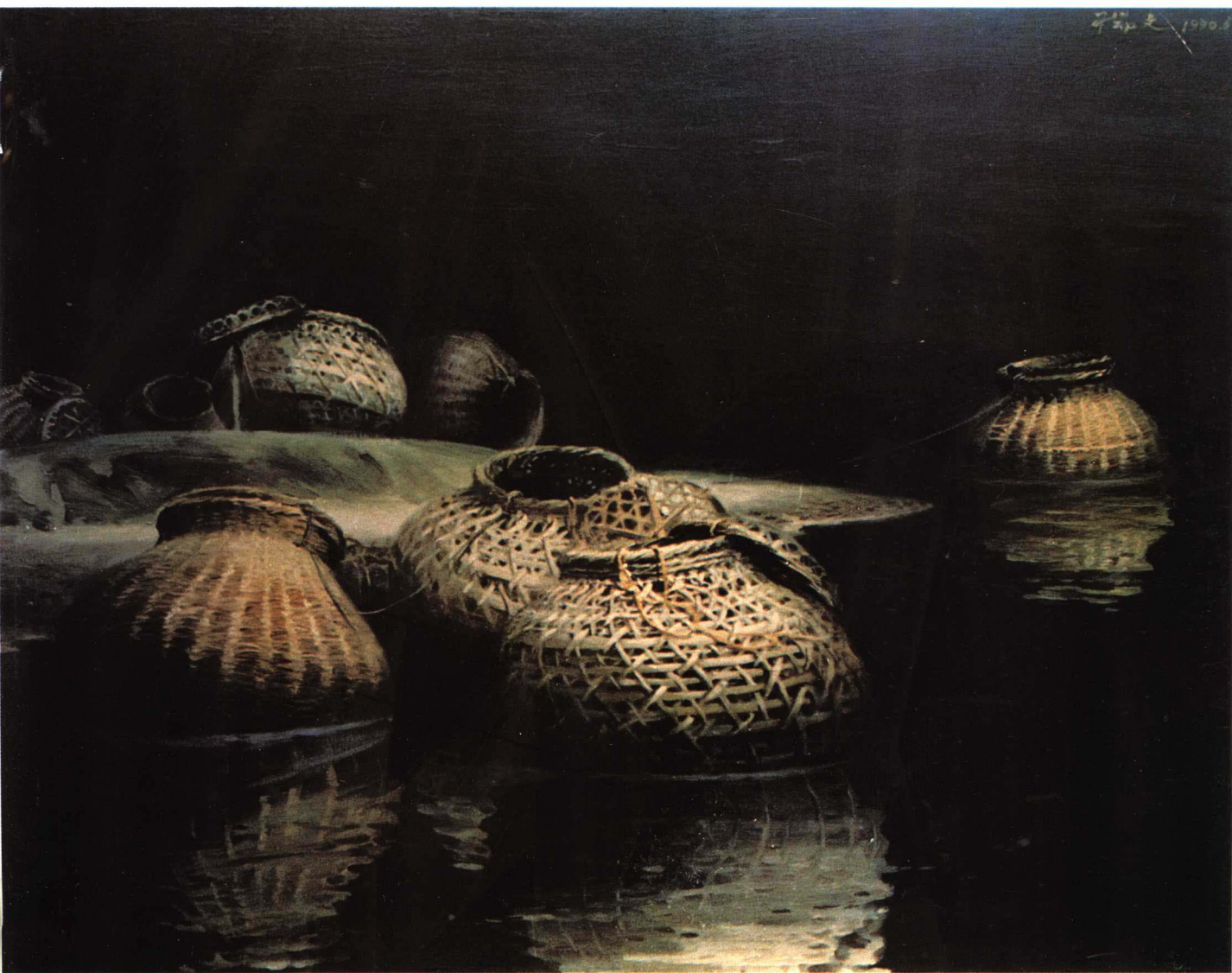
作品參加國際、全國和省級美術展覽並獲獎，古橋、漁簍、孤舟、薄霧、水氣、夕照、月色籠罩，隱隱綽綽，散發着不可捉摸的美感。被博物館及收藏家收藏。曾為杭州劇院設計160平方米的室內大型壁畫。作品發表在《美術》、《羊城晚報》等報刊上，電視臺介紹了他及其作品。姓名收入《中國美術年鑒》、《中國當代美術家人名錄》、《中國現代美術家大辭典》。

#### Selected Works of Zhou Ruiwen

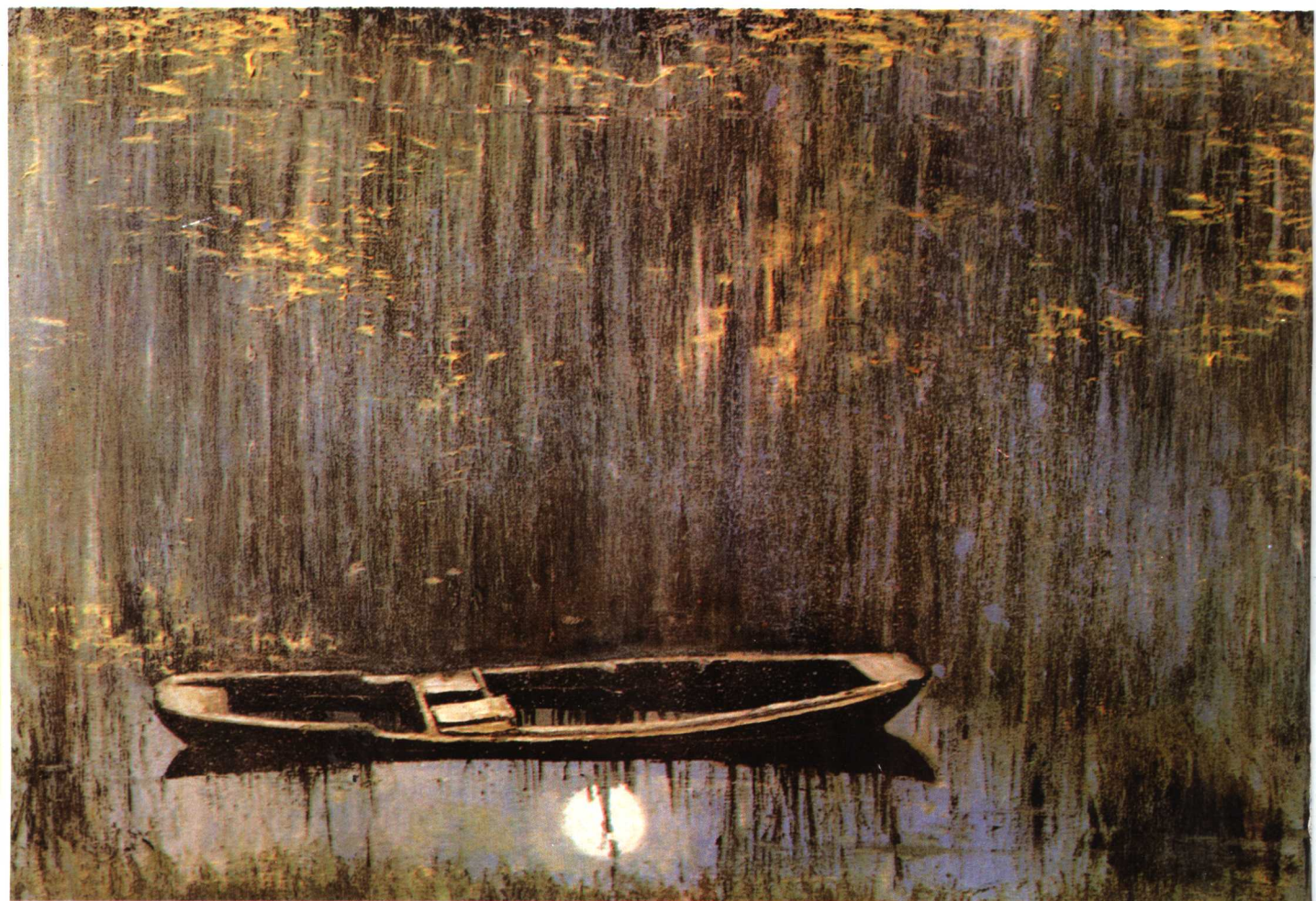
Zhou Ruiwen, a native of Haiyan, Zhejiang Province, entered the Zhejiang Academy of Fine Arts at the age of 15 and specialized in oil painting under the guidance of outstanding painters Wang Liuqiu, Quan Shanshi and Ma Yuru. During the nine years of study, he painted diligently and worked hard. He has published *Current Designs of Mastheads* and *A Collection of Mastheads*. Now he is member of the Chinese Artists' Association, a painter at the Zhejiang Academy of Painting; director of the editorial office of art and photography of *Qianjiang Evening News* of Zhejiang; council member of the Society of Oil Painting and permanent council member of the Hangzhou Artists' Association. He has participated in international, national and provincial exhibitions and his works won prizes.

Materials for his painting come from natural scenes: an ancient bridge, a fishing basket, a solitary boat, thin mist, water vapor, sunset and moonlit night, which are faintly visible and bring about an effect beyond description. His works have been collected by museums and individuals and published in *Fine Arts* and in other publications. He once designed a 160-square-meter mural for a hall of the Hangzhou Theater. A television station also shot a telefilm of him and his works. His name is listed in the *Contemporary Chinese Artists' Who's Who* and *The Directory of Modern Chinese Artists*.





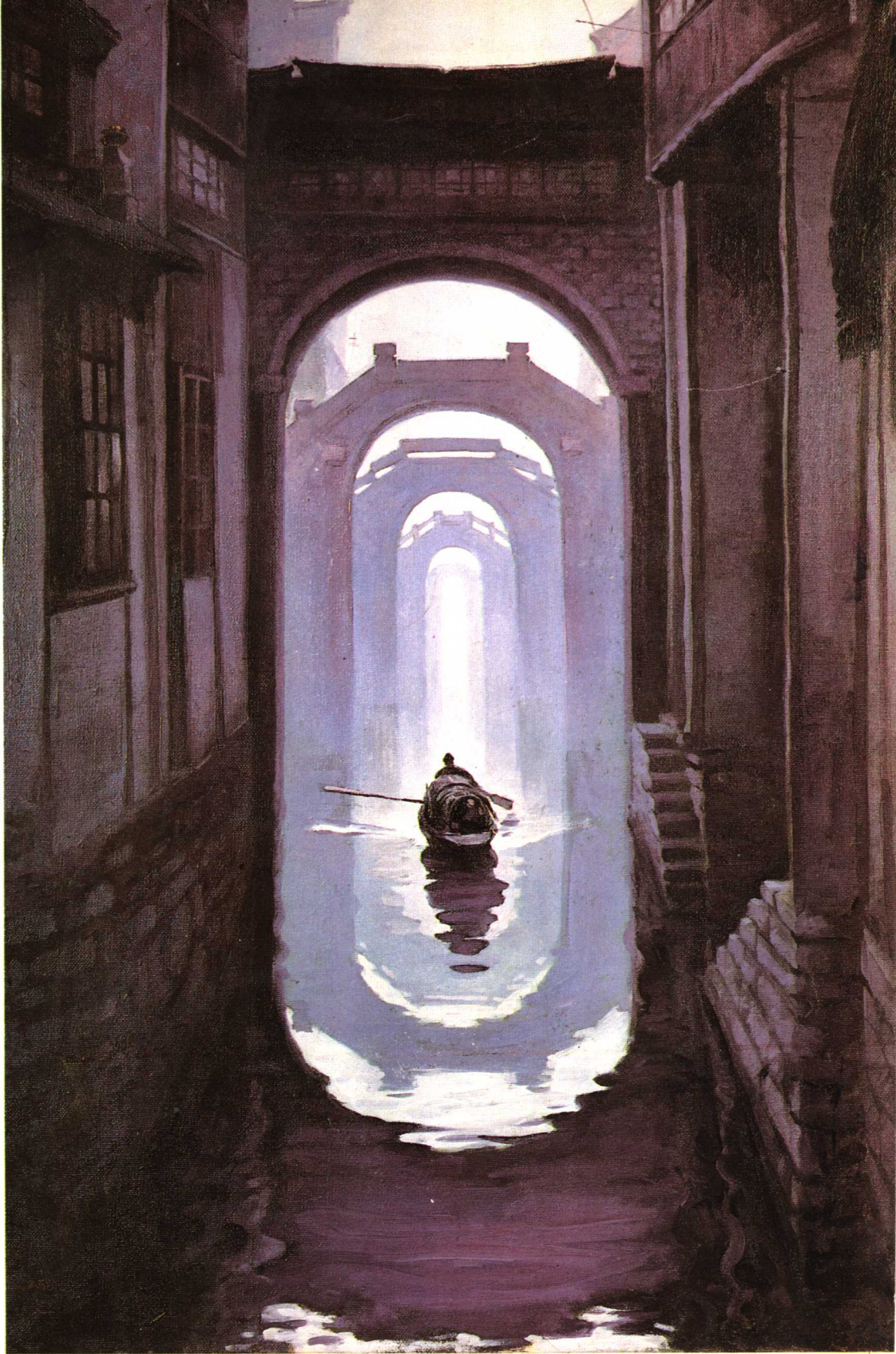
魚簍 (190×145cm) 1990年  
*Fishing Baskets.*



野渡 (190×126cm) 1988年  
*Wild Ferry.*



水巷深深 (145×224cm)  
1985年  
*Deep Water Lane.*







午休 (183×147cm) 1990年  
*Midday Rest.*



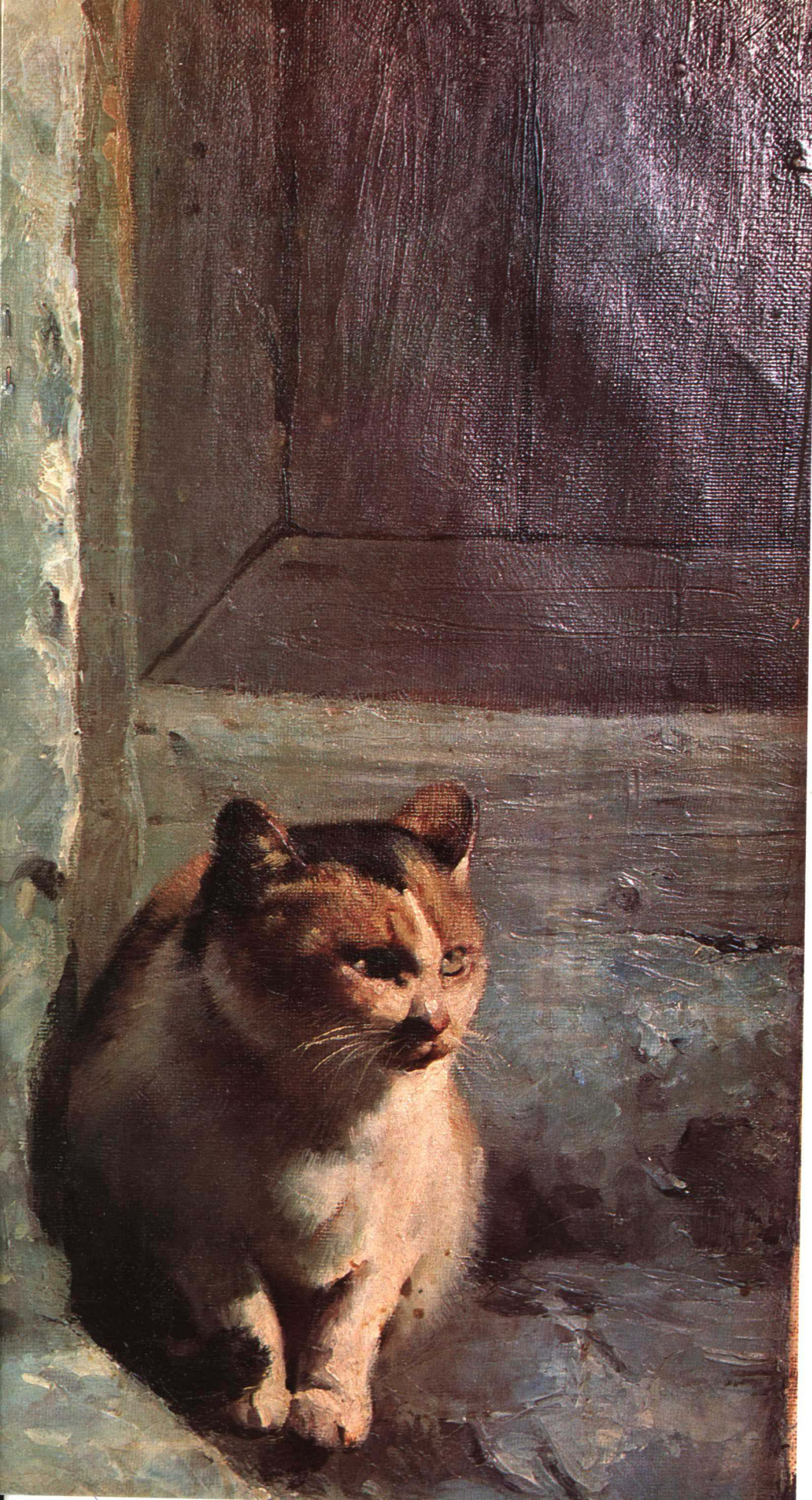


庭院 (160×206cm) 1984—1990年  
*Courtyard.*









老墙下的猫 (260×320cm)

1989年

*A Cat at the Foot of a Wall.*





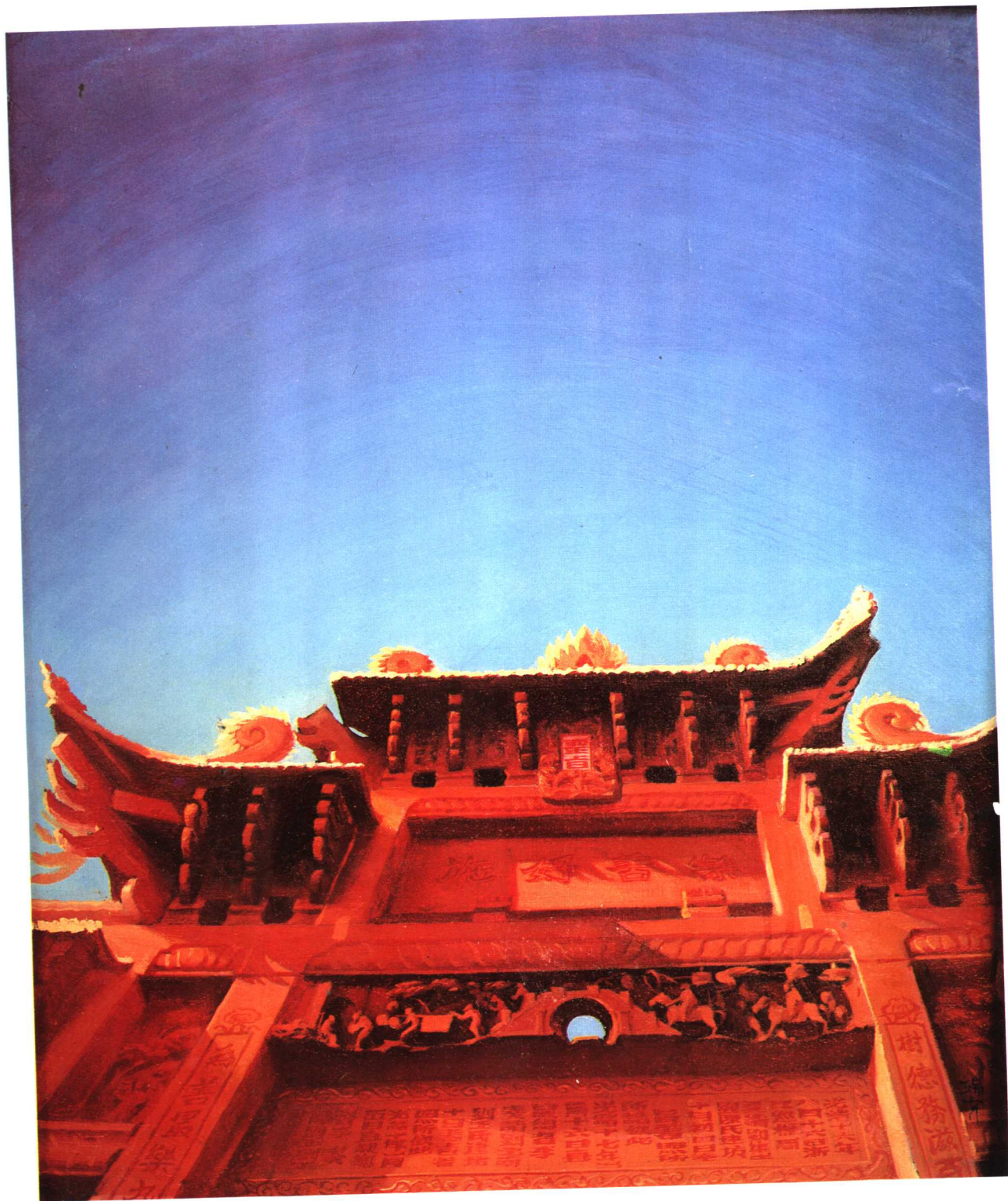
村姑 (171×208cm) 1991年  
*A Village Girl.*





橋上的牌樓 (128×103cm) 1989年  
*Archway on the Bridge.*





牌坊 (162×196cm) 1988年  
*Memorial Archway.*





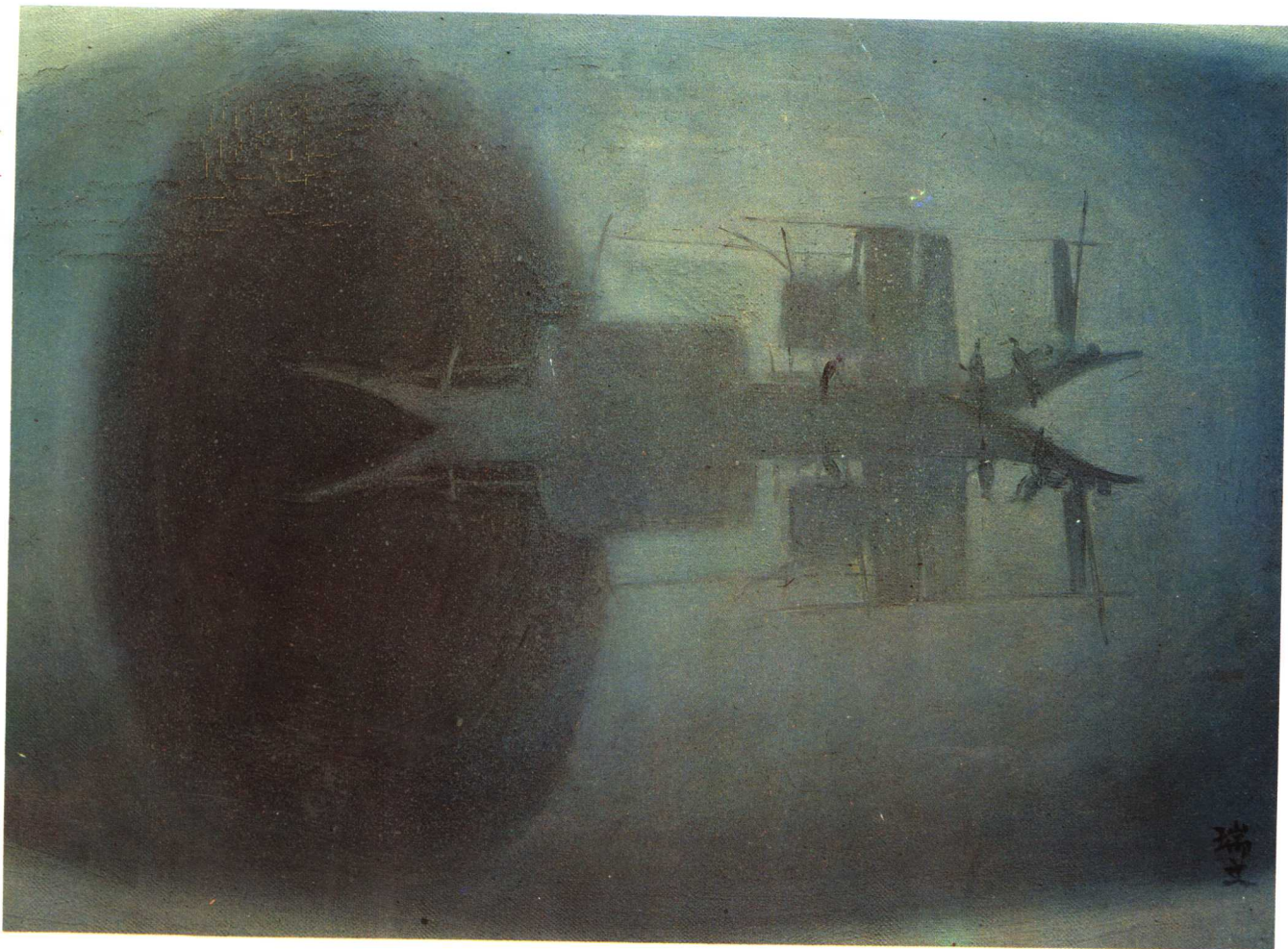
紅燭 (102×196cm) 1989年  
*Red Candles.*





月光下的漁棚 (190×149cm) 1989年  
*Fishermen's Shed in the moonlight.*





秋江 (190×139cm) . 1988年  
*Autumn River.*