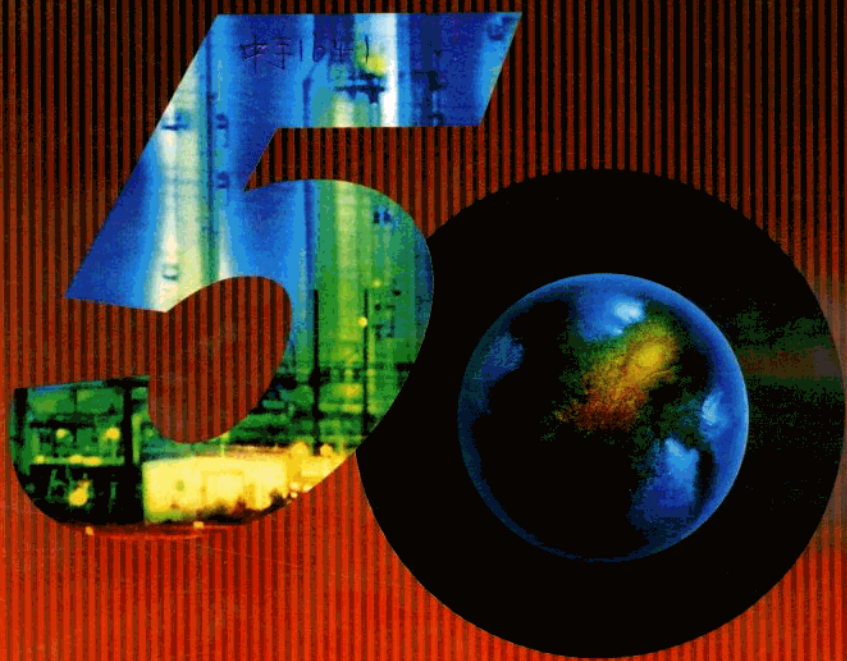


# 安徽电力五十年

50 YEARS OF ANHUI ELECTRIC POWER



# 百年滄桑，黃山見證

Huangshan Mountain is the witness of 100-year-vicissitudes.

电力——人类社会发展的强大动力，现代文明进步的重要标志。

回眸历史，我们感到骄傲。伴随着人民共和国诞生、成长、壮大的历程，安徽电业职工团结、奋斗、开拓、前进，在广阔的江淮大地上，用汗水浇

铸成一座座雄伟的发电厂，用双手架托起一条条矫健的输电线。

安徽电力工业从废墟上起步，电源建设从少到多，从小到大，30万、60万千瓦机组成为发电主力；电网建设从无到有，从弱到强，220千伏、500千伏形成主要网架。短短50年，弹指一挥间，一个以大电厂、大机组、高参数、超高压为标志的现代化安徽大电网基本形成，强大的电能正日夜不停地送往千家万户。江淮大地，夜夜星光灿烂。

展望未来，我们充满信心。沐浴着改革开放的春风，适应社会主义市场经济的要求，坚持“发展是硬道理”，坚持以经济效益为中心，坚持“人民电业为人民”的宗旨，瞄准创一流企业的大目标，深化改革，锐意进取，加强管理，勇于开拓，在即将到来的二十一世纪，我们一定会再创辉煌，续写安徽电业历史的新篇章。

钱贵元

一九九九年十月





## Preface

Electric Power——mighty impetus of the development of human society and important sign of the progress of modern civilization. We feel proud while reviewing history. With the birth of the People's Republic of China and during its growing and strengthening course, the Anhui Electric Power staff has been uniting, striving, developing and advancing. On the wide Jianghuai earth, they, through hard work, have founded grand power plants one by one; with their hands, have erected many vigorous transmission lines. Anhui electric power industry started from ruins. Its power source construction developed from few to many, from small to big, 300,000kW and 600,000kW units have become main force of power generation; the power network construction grew from nothing, from weak to strong, 220kV and 500kV have spread to be the main network structure. During the short 50 years as snapping of fingers, the biggest modernized power network of Anhui, with the following characteristics of big power plants, big generating units, high parameters and supervision, has come into being on the whole. The mighty electric power is being sent to myriads of families continuously. Jianghuai earth is star-spangled every night.

We are full of confidence as we look into the future. Being bathed in the spring breeze of reform and opening, we adapt to the socialist market economy, adhere to "Development is the only truth", insist on taking economic benefits as our central task, persevere in "People's electric power industry is for people", aim at the great target of establishing fist-rank enterprises, deepen the reform, advance with keen determination and open up boldly. We will recreate brilliant achievements determinedly in the upcoming 21 century and continue to write the new chapter of the history of Anhui Electric Power Industry.

Qian Falong  
October 1999

精

益

求

精



**ANHUI ELECTRIC POWER**



# Content

## 目 录

目录 Contents . . . . .	1
历史回顾 Review of History . . . . .	2
电源形象 Image of Power Source . . . . .	8
电网形象 Image of Power Network . . . . .	36
电力市场 Power Market . . . . .	54
电力建设 Power Construction . . . . .	74
科技教育 Scientific and Technical Education . . . . .	92
多种经营 Diversified Business . . . . .	102
改革开放 Reform and Opening . . . . .	110
企业文化 Enterprise Culture . . . . .	120



# 历史回顾

Review of History



50年，我们一步一个脚印



In the past 50 years, every step of ours left its print...

## THE LAST FIFTY YEARS OF ANHUI ELECTRIC POWER

翻阅百年安徽电力的历史，视觉上有两个印象  
灰暗模糊的 1898-1949      色彩绚丽的 1949-1999

让我们轻轻地 将灰暗模糊的一页掩去，

展开新中国安徽电力 50 年的

光辉历程……

While browsing the centennial history of Anhui Electric Power, we get two visual impressions: — gloomy and obscure 1898-1949; — colorful and bright 1949-1999. Let us quietly leave out the gloomy and obscure page and unfold the brilliant chapter of the development of Anhui Electric Power in the past 50 years in new China...



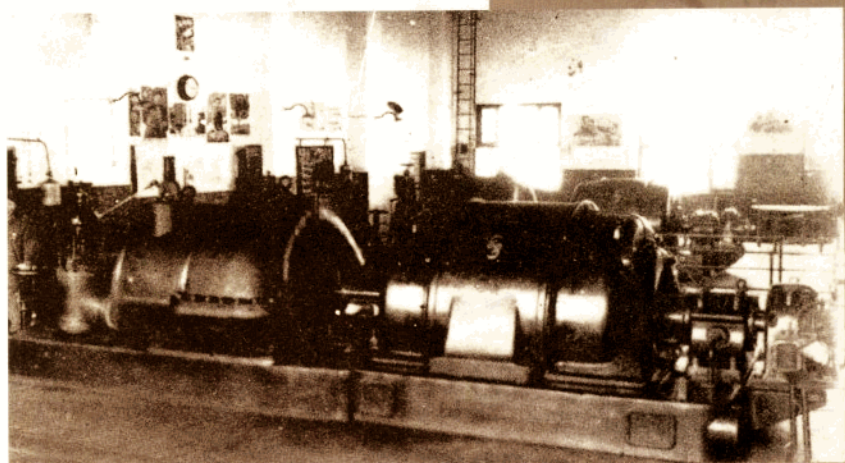
安徽电力工业源于 1898(清光绪二十四年)的安庆银元局。嗣后,到 1936 年,安徽省共建设电灯厂 38 个,发电容量 5038 千瓦。抗日战争爆发后,安徽的发电厂大部分被侵华日军抢占和破坏,全省发电容量仅存 62 千瓦。抗日战争胜利后,政府收复日占电厂,共有职工 512 人,100 千瓦以上发电厂 10 个,发电设备总容量为 1.6 万千瓦,最大单机容量为 2000 千瓦,最高电压 22 千伏,线路总长 43 公里。

新中国成立前夕,全省共有发电装机容量 1.43 万千瓦,年发电量 0.24 亿千瓦时。

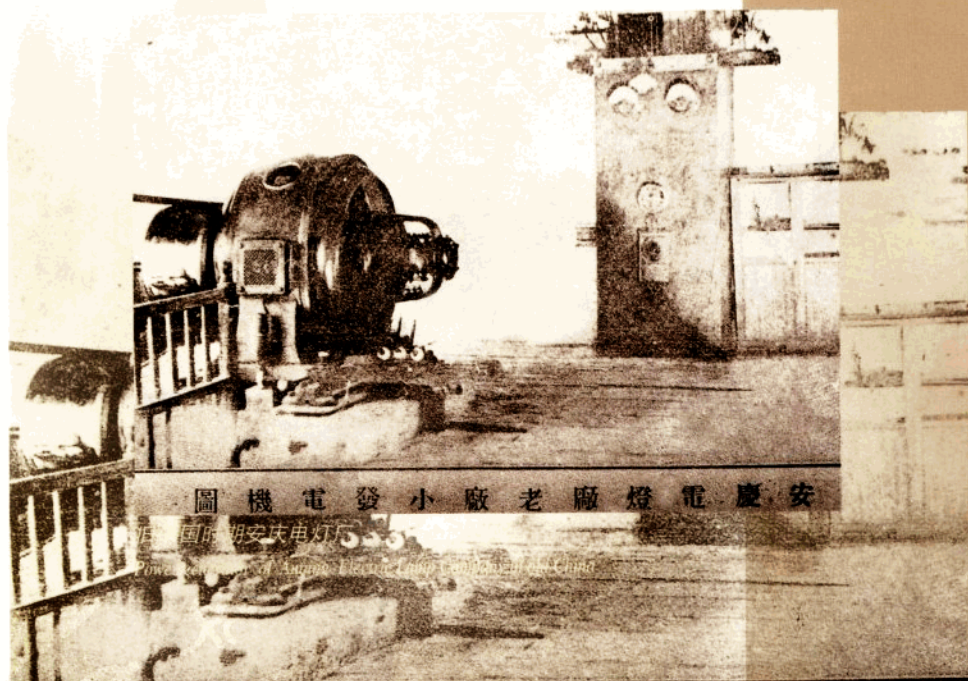
Anhui Electric Power Industry originated from Anqing Silver Dollar Bureau in 1898(Guangxu 24<sup>th</sup> year of Qing Dynasty). Up to 1936, Anhui Province had totally established 38 Electric Lamp Factories and the power generation capacity was 5038kW. After the War of Resistance Against Japan broke out, most power plants in Anhui were seized or destroyed by Japanese troops and only 62kW power generation capacity was left in the whole Province. Then, after winning the War, the government recovered the power plants that had been occupied by Japanese troops. By then, there was a staff of 512, 10 power plants above 100kW, the total capacity of power generation equipment was 16,000kW, the maximum capacity of single unit was 2000kW, the highest voltage was 22kV and the total length of line was 43km. On the eve of the founding of new China, the installed capacity of power generation of the whole Province was 14,300kW and the annual power generation was 24,000,000kWh.







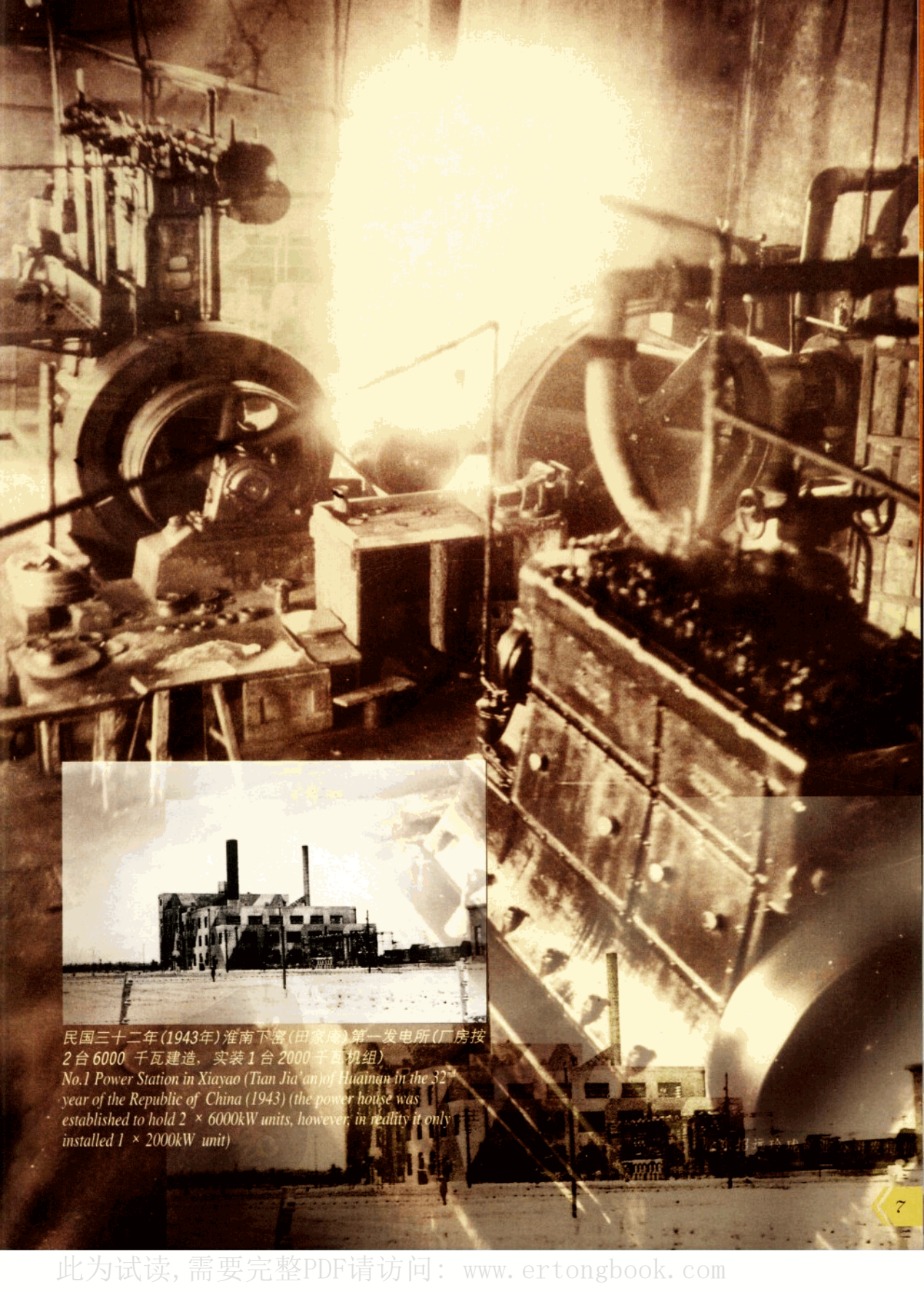
旧中国时期芜湖明远电灯公司发电机（总容量 2160 千瓦）  
Power generator (total capacity 2160kW) of Wuhu Mingyuan Electric  
Lamp Company in old China



圖機電發小廠老廠燈電慶安

圖機電發小廠老廠燈電慶安





民国三十二年(1943年)淮南下窑(田家庵)第一发电所(厂房按2台6000千瓦建造, 实装1台2000千瓦机组)

No.1 Power Station in Xiayao (Tian Jia'an) of Huainan in the 32<sup>nd</sup> year of the Republic of China (1943) (the power house was established to hold  $2 \times 6000\text{kW}$  units, however, in reality it only installed  $1 \times 2000\text{kW}$  unit)



# 电源形象

Image of Power Source







History opens a new page.

## THE VIVID IMAGE OF ANHUI ELECTRIC POWER SOURCE

久远的历史，  
我们已找不出更多的形象资料与今天对比。

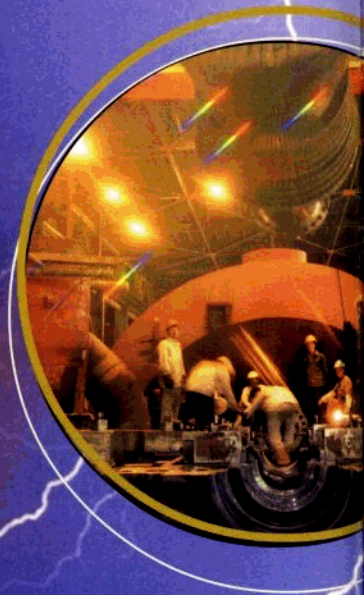
且让这组数字和世纪之交  
勃勃生机的安徽电源形象，

使您感受 50 年的  
沧桑巨变……

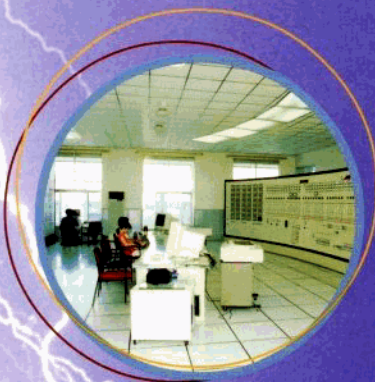
We are unable to find out more image materials to compare with those of the present for  
the history is too dimmed. Let the figures and the vigorous image of Anhui Power  
Source at the cross of centuries help you experience the tremendous changes of the 50  
years.

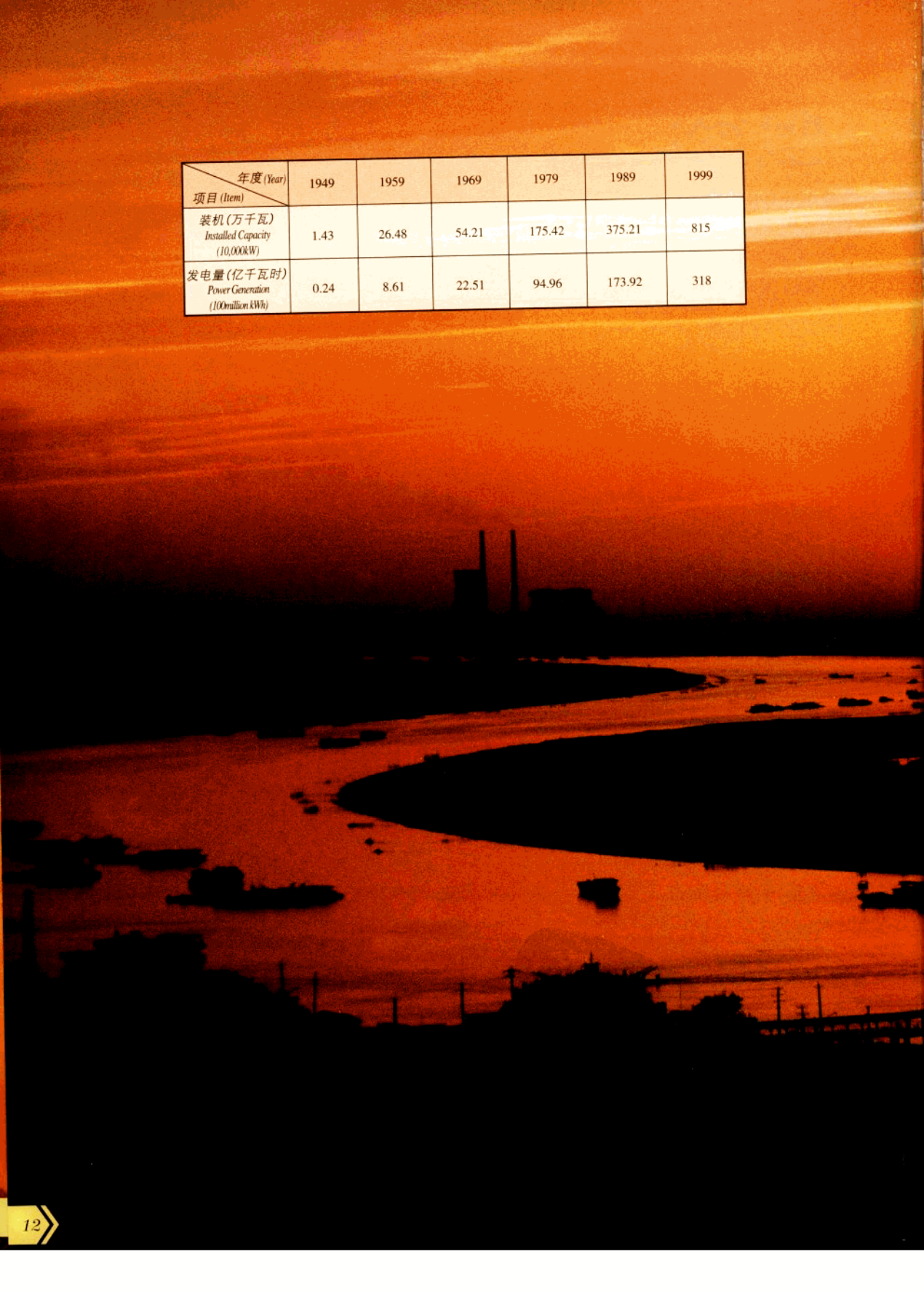
# 火电篇

Thermal Power









年度 (Year) 项目 (Item)	1949	1959	1969	1979	1989	1999
装机 (万千瓦) Installed Capacity (10,000kW)	1.43	26.48	54.21	175.42	375.21	815
发电量 (亿千瓦时) Power Generation (100million kWh)	0.24	8.61	22.51	94.96	173.92	318



