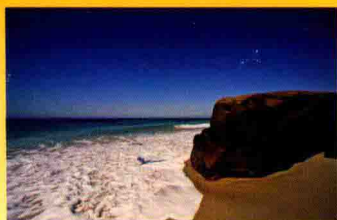
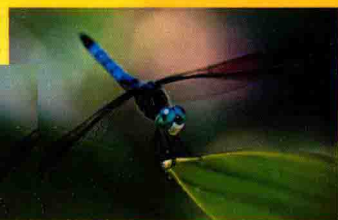


Free Gray/Color Checker Card Inside!

J. Dennis Thomas

Nikon® **D300s**

Digital Field Guide



Nikon®
D300s

Digital Field Guide

J. Dennis Thomas



WILEY

Wiley Publishing, Inc.

Nikon® D300s Digital Field Guide

Published by
Wiley Publishing, Inc.
10475 Crosspoint Boulevard
Indianapolis, IN 46256
www.wiley.com

Copyright © 2010 by Wiley Publishing, Inc., Indianapolis, Indiana

Published simultaneously in Canada

ISBN: 978-0-470-52127-4

Manufactured in the United States of America

10 9 8 7 6 5 4 3 2 1

No part of this publication may be reproduced, stored in a retrieval system or transmitted in any form or by any means, electronic, mechanical, photocopying, recording, scanning or otherwise, except as permitted under Sections 107 or 108 of the 1976 United States Copyright Act, without either the prior written permission of the Publisher, or authorization through payment of the appropriate per-copy fee to the Copyright Clearance Center, 222 Rosewood Drive, Danvers, MA 01923, (978) 750-8400, fax (978) 646-8600. Requests to the Publisher for permission should be addressed to the Permissions Department, John Wiley & Sons, Inc., 111 River Street, Hoboken, NJ 07030, 201-748-6011, fax 201-748-6008, or online at <http://www.wiley.com/go/permissions>.

LIMIT OF LIABILITY/DISCLAIMER OF WARRANTY: THE PUBLISHER AND THE AUTHOR MAKE NO REPRESENTATIONS OR WARRANTIES WITH RESPECT TO THE ACCURACY OR COMPLETENESS OF THE CONTENTS OF THIS WORK AND SPECIFICALLY DISCLAIM ALL WARRANTIES, INCLUDING WITHOUT LIMITATION WARRANTIES OF FITNESS FOR A PARTICULAR PURPOSE. NO WARRANTY MAY BE CREATED OR EXTENDED BY SALES OR PROMOTIONAL MATERIALS. THE ADVICE AND STRATEGIES CONTAINED HEREIN MAY NOT BE SUITABLE FOR EVERY SITUATION. THIS WORK IS SOLD WITH THE UNDERSTANDING THAT THE PUBLISHER IS NOT ENGAGED IN RENDERING LEGAL, ACCOUNTING, OR OTHER PROFESSIONAL SERVICES. IF PROFESSIONAL ASSISTANCE IS REQUIRED, THE SERVICES OF A COMPETENT PROFESSIONAL PERSON SHOULD BE SOUGHT. NEITHER THE PUBLISHER NOR THE AUTHOR SHALL BE LIABLE FOR DAMAGES ARISING HEREFROM. THE FACT THAT AN ORGANIZATION OR WEB SITE IS REFERRED TO IN THIS WORK AS A CITATION AND/OR A POTENTIAL SOURCE OF FURTHER INFORMATION DOES NOT MEAN THAT THE AUTHOR OR THE PUBLISHER ENDORSES THE INFORMATION THE ORGANIZATION OF WEB SITE MAY PROVIDE OR RECOMMENDATIONS IT MAY MAKE. FURTHER, READERS SHOULD BE AWARE THAT INTERNET WEB SITES LISTED IN THIS WORK MAY HAVE CHANGED OR DISAPPEARED BETWEEN WHEN THIS WORK WAS WRITTEN AND WHEN IT IS READ.

For general information on our other products and services or to obtain technical support, please contact our Customer Care Department within the U.S. at (877) 762-2974, outside the U.S. at (317) 572-3993 or fax (317) 572-4002.

Wiley also publishes its books in a variety of electronic formats. Some content that appears in print may not be available in electronic books.

Library of Congress Control Number: 2009938250

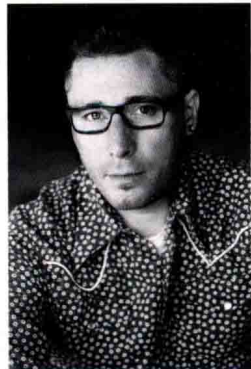
Trademarks: Wiley and the Wiley Publishing logo are trademarks or registered trademarks of John Wiley & Sons, Inc. and/or its affiliates. Nikon is a registered trademark of Nikon Corporation. All other trademarks are the property of their respective owners. Wiley Publishing, Inc. is not associated with any product or vendor mentioned in this book.



WILEY

About the Author

J. Dennis Thomas is a freelance photographer and author based out of Austin TX. He has nearly 25 years of experience behind the lenses of Nikon cameras. His work has been published in many regional and national publications including *Rolling Stone*, *Spin Magazine*, and *SXSW World* magazines. He has written 10 highly successful Digital Field Guides for Wiley publishing with more in the works.



Credits

Acquisitions Editor

Courtney Allen

Project Editor

Sarah Cisco

Technical Editor

Mike Hagen

Senior Copy Editor

Kim Heusel

Editorial Director

Robyn Siesky

Editorial Manager

Cricket Krengel

Business Manager

Amy Knies

Senior Marketing Manager

Sandy Smith

Vice President and Executive Group

Publisher

Richard Swadley

Vice President and Executive Publisher

Barry Pruett

Project Coordinator

Lynsey Stanford

Graphics and Production Specialists

Jennifer Mayberry

Mark Pinto

Quality Control Technician

John Greenough

Proofreading and Indexing

Linda Seifert

Potomac Indexing, LLC

To all my friends . . .

Acknowledgments

Thanks to Cricket, Courtney, Sarah, Jama, Laura, and everyone else at Wiley. Muchas gracias to the folks at Precision camera in Austin, TX.

Introduction

Welcome to the D300s Digital Field Guide. This book is a handy reference for you to get started learning about all of the features and functions of your Nikon D300s DSLR camera.

This Digital Field Guide isn't meant to replace the user's manual, but to be an adjunct to the manual explaining things simpler and in more detail than the manual. The guide is aimed at D300s owners that are just beginning in the world of digital SLR's up to advanced users with more hands on knowledge of photography.

The D300s Digital Field Guide not only covers the specifics of the D300s, but also covers many other facets of digital photography from the basics of exposure to lighting and composition. There's also a chapter to help you get started with Nikon's Creative Lighting System and all of the possibilities that Nikon's Speedlights offer.

About this book

The D300s will likely be used by a wide variety of users, from possible first time DSLR owners to people who have owned other DSLRs and have plenty of experience with photography. This book contains information for D300s users off all levels. The first few chapters cover the basics of the camera; the buttons and switches, the menu options, and the different settings. These are all described in detail with some tips on how to effectively use them.

Other chapters include information on lenses, how they work and what applications specific lenses are best for. There's a primer on working with different lighting types as well as a chapter that teaches you how to take on different photographic tasks.

To put it simply there's a lot of information in this book. There's a good bit of information for everyone, from the new photographer to the advanced hobbyist.

About the D300s

The D300s is the predecessor of Nikon's hugely successful D300 camera. The D300s shares quite a few features from Nikon's high-end cameras; the D3, D700, and of course the D300, as well as offering some features that no other DSLR offers such as the ability to autofocus while recording HD video clips.

The D300s' DX-format 12.3 megapixel CMOS sensor gives the camera a high signal to noise ratio. Combining this sensor with EXPEED image processing inherited from the venerable D3, the D300s offers incredible images with low noise rivaling the D300 images especially at high ISO settings.

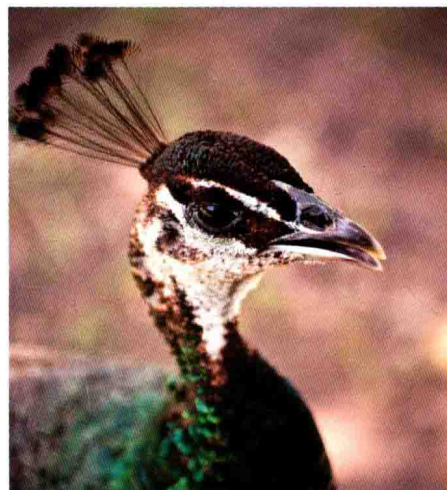
Like the D300 and Nikon's FX-format cameras, the D300s has Live View. Live View allows you to view exactly what's coming through the lens right on the rear panel LCD. This feature enables you to use the LCD monitor to compose your photographs in situations where it may be awkward to put your eye up to the viewfinder.

The Live View feature enables the camera to shoot live HD video straight from the image sensor. The built-in microphone allows you to record sound as you're recording video and has surprisingly good sound quality, but even better the D300s allows you to connect a stereo microphone for much better control over the sound quality. This feature has never been available on any Nikon DSLR with video.

This new video ability allows you to record and share your memories like never before using only one camera. Additionally the D300s sensor is larger than that of most video cameras allowing you to shoot much higher quality videos in low light. This larger sensor also allows you to get a much more shallow depth of field giving your videos a more creative look.

Nikon has made the D300s available with the well regarded 16-85mm f/3.5-5.6 VR. This is a great all around lens that covers the most used focal lengths. From the moderately wide 16mm to use for architecture, interiors and landscapes to 85mm which is perfect for portraits and some sports, this lens covers most of your basic photography needs. The added bonus of Nikon's Vibration Reduction allows you to hand hold the camera at slower shutter speeds without worrying about blurry pictures caused by camera shake. The Silent Wave motor in the lens allows for quick, nearly silent focusing.

Another great thing about the D300s is that, like all other Nikon SLR's you can use almost all lenses manufactured by Nikon in the last 75 years. Nikon is known for having some of the highest quality optics in the industry.



Contents

Introduction

xxi

CHAPTER 1

Exploring the Nikon D300s

1

Key Components of the D300s	2
Top of the camera	2
Back of the camera	5
Front of the camera	9
Left front	9
Right front	11
Sides and bottom of camera	13
Right side	13
Left side	14
Bottom	14
Viewfinder Display	16
Control Panel	19
Shooting Info Display	24
D300s DX-format CMOS Sensor	29
From Analog to Digital	30
CMOS versus CCD	30
CCD	30
CMOS	31
Pixels	31
Micro-lenses	31
Interpreting color	31

CHAPTER 2

Nikon D300s Essentials

33

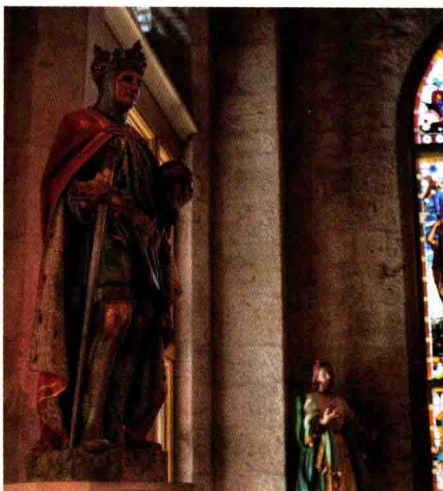
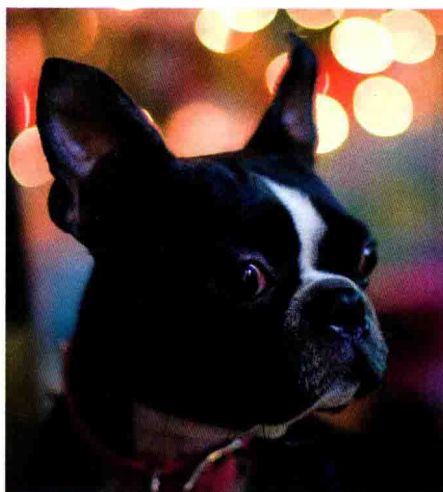
Exposure Modes	34
Programmed Auto	34
Aperture Priority	35
Shutter Priority	36
Manual	37
Metering Modes	38
Matrix	38
Center-weighted	40
Spot	41
Focus Modes	41
How the D300s autofocus works	41

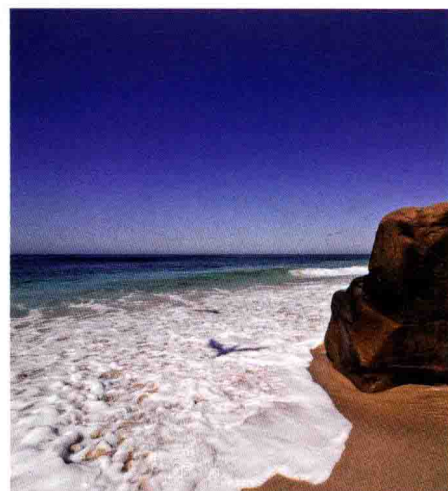
Phase detection	42
Contrast detection	42
Continuous	43
Single	43
Manual	44
Autofocus Area Modes	44
Single-area AF	45
Dynamic-area AF	45
9 points	45
21 points	46
51 points	46
51 points (3D-tracking)	46
Auto-area AF	46
ISO Sensitivity	47
Auto ISO	48
Noise reduction	49
Long exposure NR	50
High ISO NR	50
White Balance	51
What is Kelvin?	52
White balance settings	52
Picture Controls	56
Original Picture Controls	56
Optional Picture Controls	57
Custom Picture Controls	57
JPEG	63
TIFF	65
Image Size	65
Image Quality	66
NEF (RAW)	66
Type	67
Bit depth	67
Live View	70

CHAPTER 3

Setting Up the Nikon D300s 73

Accessing Menus	74
Playback Menu	74
Delete	74
Playback folder	75
Hide image	76
Display mode	76
Copy image(s)	77
Image review	78





After delete	78
Rotate tall	78
Slide show	78
Print set (DPOF)	79
Shooting Menu	80
Shooting menu bank.	80
Reset shooting menu	82
Active folder	82
File naming	83
Primary slot selection	84
Secondary slot function	84
Image quality	84
Image size.	85
JPEG compression	86
NEF (RAW) recording	86
White balance.	87
Using standard WB settings	87
Choosing a color temperature	88
Preset white balance	88
Set Picture Control	91
Manage Picture Control	92
Color space.	94
Active D-Lighting	94
Long exp. NR	95
High ISO NR	95
ISO sensitivity settings.	96
Live view.	96
Multiple exposure.	97
Movie Settings	97
Interval timer shooting	97
Custom Settings Menu	98
Custom setting bank.	99
Reset custom settings	99
CSM a – Autofocus.	99
a1 – AF-C priority selection	100
a2 – AF-S priority selection	100
a3 – Dynamic AF area	100
a4 – Focus tracking with lock-on	101
a5 – AF activation.	101
a6 – AF point illumination.	101
a7 – Focus point wrap-around	101
a8 – AF point selection.	102
a9 – Built-in AF-assist illuminator	102
a10 – AF-ON for MB-D10.	102

CSM b – Metering/exposure. 103

 b1 – ISO sensitivity step value. 103

 b2 – EV steps for exposure cntrl. 103

 b3 – Exp comp/fine tune 103

 b4 – Easy exposure compensation . . 103

 b5 – Center-weighted area. 104

 b6 – Fine tune optimal exposure . . . 104

CSM c – Timers/AE lock. 104

 c1 – Shutter-release button AE-L. . . . 105

 c2 – Auto meter-off delay 105

 c3 – Self-timer delay 105

 c4 – Monitor off delay 105

CSM d – Shooting/display. 106

 d1 – Beep. 106

 d2 – Viewfinder grid display. 106

 d3 – Viewfinder warning display . . . 106

 d4 – Screen tips 106

 d5 – CL mode shooting speed. 107

 d6 – Max. continuous release 107

 d7 – File number sequence 107

 d8 – Information display. 107

 d9 – LCD illumination. 108

 d10 – Exposure delay mode. 108

 d11 – MB-D10 battery type 108

 d12 – Battery order 108

CSM e – Bracketing/flash 109

 e1 – Flash sync speed 109

 e2 – Flash shutter speed 109

 e3 – Flash cntrl for built-in flash. . . . 109

 e4 – Modeling flash 110

 e5 – Auto bracketing set 110

 e6 – Auto bracketing (Mode M) 110

 e7 – Bracketing order. 111

CSM f – Controls 111

 f1 – Switch. 111

 f2 – Multi selector center button . . . 111

 f3 – Multi selector 112

 f4 – Photo info/playback. 112

 f5 – Assign Fn. button 112

 f6 – Assign preview button 115

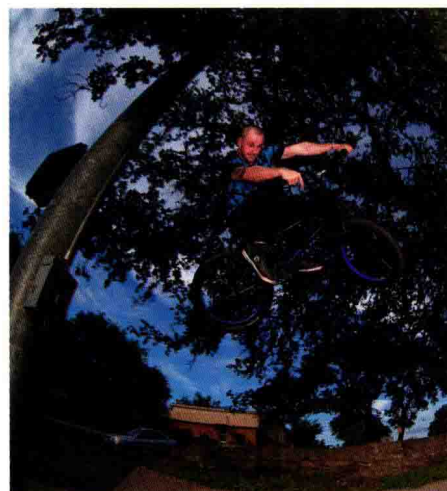
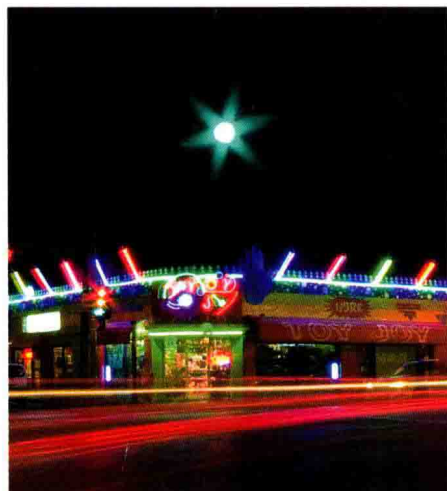
 f7 – Assign AE-L/AF-L button. 115

 f8 – Customize command dials 115

 f9 – Release button to use dial 115

 f10 – No memory card? 116





f11 – Reverse indicators	116
Setup Menu.....	116
Format memory card	116
LCD brightness.....	117
Clean image sensor	117
Lock mirror up for cleaning.....	118
Video mode.....	118
HDMI	118
Time zone and date	118
Language	119
Image comment	119
Auto image rotation	119
Image Dust Off ref photo	119
Battery info.....	119
Wireless transmitter.....	120
Image authentication	120
Copyright information.....	121
Save/load settings.....	121
GPS.....	121
Virtual Horizon.....	121
Non-CPU lens data	121
AF fine tune	122
Firmware version	124
Retouch Menu.....	124
D-Lighting	126
Red-eye correction	126
Trim.....	127
Monochrome	127
Filter effects	128
Color balance	129
Image overlay	129
NEF (RAW) Processing.....	130
Resize.....	131
Side-by-side comparison.....	131
Edit Movie.....	132
My Menu.....	132
Info Display Settings	133

CHAPTER 4

Selecting and Using Lenses for the Nikon D300s

135

Nikon Lens Codes	136
Perspective Distortion	137

Lens Compatibility 140

Wide-Angle Lenses 141

 When to use a wide-angle lens 144

 Understanding limitations 145

DX Crop Factor 145

Midrange Lenses 147

Telephoto Lenses 149

Special-Purpose Lenses 153

 Macro lenses 154

 Perspective Control lenses 155

 Defocus Control lenses 157

 Fisheye lenses 159

Using Vibration Reduction Lenses. 160

CHAPTER 5

Understanding Exposure 163

Exposure Overview 164

 Shutter speed 164

 ISO 165

 Aperture 167

Fine-Tuning Your Exposure 170

 Exposure compensation 170

 Histograms 171

 Bracketing 176

CHAPTER 6

Working with Light 183

Natural Light 184

D300s Flash Basics 186

 Achieving proper exposures 186

 Guide Number 186

 Aperture 187

 Distance 187

 GN / Distance = Aperture 187

Flash exposure modes 188

 i-TTL and i-TTL BL 188

 Manual 188

 Auto 188

 Auto Aperture 189

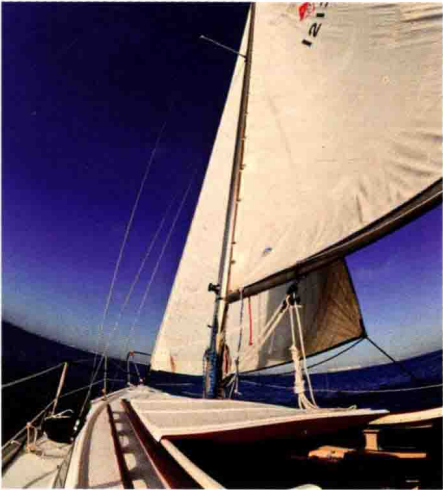
 Guide Number distance priority 189

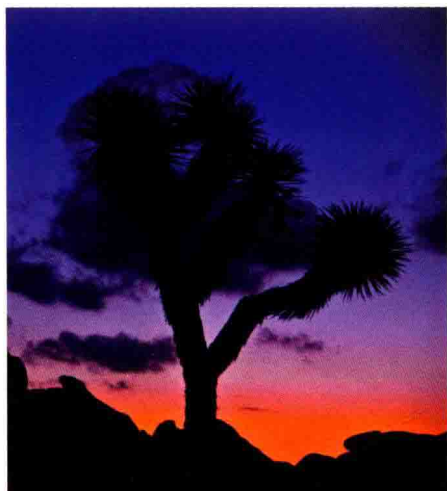
 Repeating flash 189

Flash sync modes 190

 Sync speed 190

 Front-curtain sync 192





Red-eye reduction	193
Slow sync.	193
Rear-curtain sync	194
Flash Exposure Compensation	195
Fill flash.	196
Bounce flash.	199
Nikon Creative Lighting System Basics.	200
Understanding the Creative Lighting System.	201
Speedlights.	202
SB-900	202
SB-800	203
SB-600	204
SB-400	206
SU-800 Wireless Speedlight Commander	206
R1/R1C1 Macro Ring Flash	207
Using the Built-In Flash	208
Using Studio Strobes.	209
Continuous Lighting.	213
Incandescent and halogen	214
Fluorescent.	215
HMI.	216
Light Modifiers	216
Umbrellas	216
Softboxes	218
Diffusion panels	219
Other light modifiers.	220

CHAPTER 7

D-Movie 223

About Video.	224
Progressive versus interlaced.	225
Frame rate	225
Shutter	226
Setting up D-Movie.	228
Recording	229
Tricks, Tips, and Workarounds	230
In-Camera Editing	232
Video-Editing Software	233

CHAPTER 8

Action and Sports Photography

235

Preparing Your Shot.

236

Panning

238

Using Speedlights

239

CHAPTER 9

Event Photography

241

Concert

242

Gaining access

242

Techniques and settings.

244

Wedding

247

Getting started

248

Shot list

248

Other preparations.

250

Using flash

251

After the wedding.

253

CHAPTER 10

Landscape and Nature

255

Landscape

256

Nature

260

Macro

262

Preparing Your Shot.

263

Tools of the Trade

264

CHAPTER 11

Night and Low-light Photography

267

How to Photograph at Night and in

Low Light

268

Long shutter speeds.

269

Small apertures.

269

What to Watch For

269

Shooting Architecture

270

Shooting Low Light Indoors

271

Shooting a Dark Scene without flash

272

Shooting Fireworks

273

CHAPTER 12

Portrait Photography

275

Setting.

276

Studio considerations

276

Portrait lighting patterns

277

