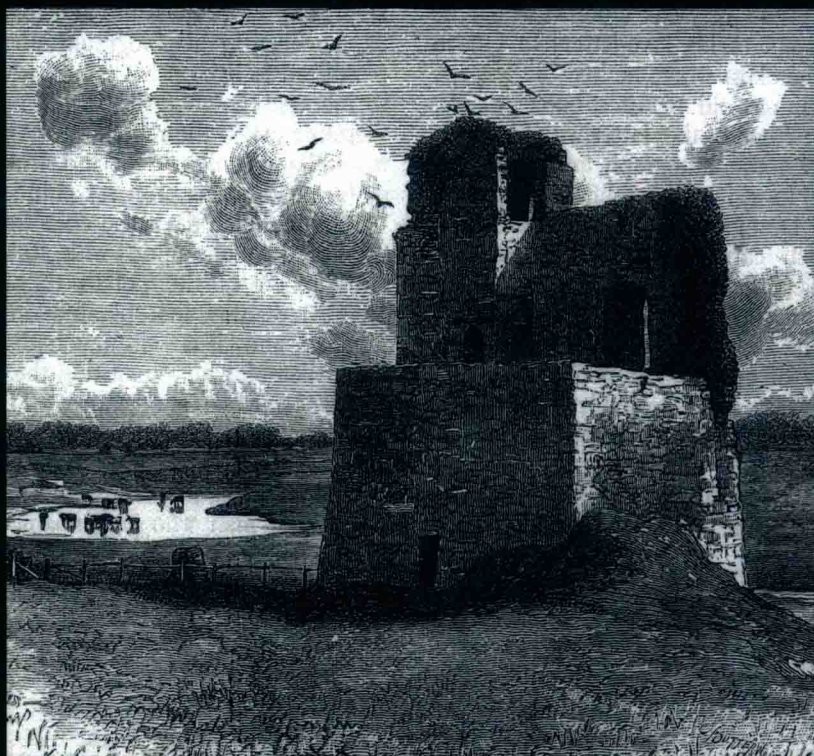


# Edmund SPENSER *in Context*

Edited by Andrew Escobedo



# EDMUND SPENSER IN CONTEXT

EDITED BY  
ANDREW ESCOBEDO



**CAMBRIDGE**  
UNIVERSITY PRESS

# CAMBRIDGE UNIVERSITY PRESS

University Printing House, Cambridge CB2 8BS, United Kingdom

Cambridge University Press is part of the University of Cambridge.

It furthers the University's mission by disseminating knowledge in the pursuit of education, learning and research at the highest international levels of excellence.

[www.cambridge.org](http://www.cambridge.org)

Information on this title: [www.cambridge.org/9781107094536](http://www.cambridge.org/9781107094536)

© Cambridge University Press 2017

This publication is in copyright. Subject to statutory exception and to the provisions of relevant collective licensing agreements, no reproduction of any part may take place without the written permission of Cambridge University Press.

First published 2017

Printed in the United Kingdom by Clays, St Ives plc

*A catalogue record for this publication is available from the British Library*

*Library of Congress Cataloging-in-Publication Data*

Names: Escobedo, Andrew, 1967– editor.

Title: Edmund Spenser in context / edited by Andrew Escobedo.

Description: Cambridge : Cambridge University Press, 2016. |

Series: Literature in context | Includes bibliographical references and index.

Identifiers: LCCN 2016026527 | ISBN 9781107094536 (hardback)

Subjects: LCSH: Spenser, Edmund, 1552–1599 – Criticism and interpretation.

Classification: LCC PR2364 .E39 2016 | DDC 821/.3–dc23

LC record available at <https://lcn.loc.gov/2016026527>

ISBN 978-1-107-09453-6 Hardback

Cambridge University Press has no responsibility for the persistence or accuracy of URLs for external or third-party internet websites referred to in this publication, and does not guarantee that any content on such websites is, or will remain, accurate or appropriate.

## EDMUND SPENSER IN CONTEXT

Edmund Spenser's poetry remains an indispensable touchstone of English literary history. Yet for modern readers his deliberate use of archaic language and his allegorical mode of writing can become barriers to understanding his poetry. This volume of thirty-seven chapters, written by distinguished scholars, offers a rich introduction to the literary, political, and religious contexts that shaped Spenser's poetry, including the environment in which he lived, the genres he drew upon, and the influences that helped to fashion his art. The collection reveals the multiple personae that Spenser constructs within his work: to read Spenser is to read a rich archive of literary forms, and this volume provides the contexts in which to do so. A list of Further Reading at the end of the volume will prove invaluable to further study.

ANDREW ESCOBEDO has been co-editor of the journal *Spenser Studies* since 2010, and his second book, *Volition's Face: Personification and the Will in Renaissance Literature*, is forthcoming. His work has been recognized by several national awards and distinctions, and his research won the support of a residential fellowship at the National Humanities Center in 2009–10.

*To Paul Alpers and Harry Berger – two great Spenserians  
not in this volume but present nonetheless*

## Illustrations

- 5.1 Frontispiece from John Case, *Sphaera Civitatis* (Oxonix: excudebat Iosephus Barnesius, 1588). Photograph by Anna Riehl Bertolet, from the collection of the Folger Shakespeare Library, Washington, DC. STC 4761, copy 2. page 44
- 5.2 Nicholas Hilliard. *Portrait of Queen Elizabeth I*. Portrait miniature. Watercolor on vellum stuck onto plain card. Ca. 1586–1587. © Victoria and Albert Museum, London. 49
- 7.1 (a) John Derricke, *The Image of Irelande, with a discoverie of woodkarne* (1581) ed. John Small (Edinburgh, 1883), plate 3. (b) Theodor de Bry, *America* [i.e., *Grands Voyages*] (Frankfurt, 1590–1620), iii, 127. Used by permission of the Folger Shakespeare Library. 65
- 8.1 Land Grant Map from Pauline Henley, *Spenser in Ireland* (Cork University Press, 1928). 78
- 10.1 Map of Munster. Used by permission of the National Library of Ireland. 91
- 32.1 Andrea Alciato, “In Occasionem,” *Omnia Andreae Alciati emblemata* (with commentary by Claude Mignault) (Antwerp: Christopher Plantin, 1581). Reproduced with permission of Cambridge University Library. 304
- 32.2 Jan van der Noot, “Then did appeare to me a sharped spire . . .,” *A theatre wherein be represented as wel the miseries & calamities that follow the voluptuous worldlings* . . . (London: Henry Bynneman, 1569). Reproduced with permission of Cambridge University Library. 309
- 34.1 Illustration from Peter Apian, *Cosmographicus liber* (Landshut, 1574). Courtesy of the Beinecke Rare Book and Manuscript Library, Yale University. 326

## Contributors

JUDITH H. ANDERSON is Chancellor's Professor Emeritus in Indiana University. Among her recent books are *Translating Investments: Metaphor and the Dynamic of Cultural Change in Tudor-Stuart England* and *Reading the Allegorical Intertext: Chaucer, Spenser, Shakespeare, Milton*. Her forthcoming book is *Light and Death: Figuration in Spenser, Kepler, Donne, Milton*.

CRAIG A. BERRY is an independent scholar and currently serves as Digital Projects Editor at *The Spenser Review*. He is the author of AnnoLex, a data curation tool for improving transcription quality in digital texts such as the EEBO-TCP corpus.

ANNA RIEHL BERTOLET is an Associate Professor in the Department of English at Auburn University. She is the author of *The Face of Queenship: Early Modern Representations of Elizabeth I* (2010), a co-editor of *Tudor Court Culture* (2010), *Creating the Pre-Modern in the Post-Modern Classroom* (forthcoming), and *A Biographical Encyclopedia of Early Modern Englishwomen 1500–1650: Exemplary Lives and Memorable Acts* (forthcoming).

PATRICK CHENEY teaches at Penn State, and is a past President of the International Spenser Society. His most recent monograph, forthcoming from Cambridge University Press, is *English Authorship and the Early Modern Sublime: Spenser, Marlowe, Jonson, Shakespeare*.

KIMBERLY ANNE COLES is Associate Professor of English at the University of Maryland. She is the author of *Religion, Reform, and Women's Writing in Early Modern England* (2008), as well as a number of articles on the topics of women's writing, gender, and religious ideology. She is currently editing *The Ashgate Companion to Women, Sex, and Gender in Early Modern Anglophone Literature* with Eve Keller, and writing a book on the constitution of belief in early modern England.

JOHN E. CURRAN, JR. is Professor of English at Marquette University and Editor of the journal *Renaissance: Essays on Values in Literature*. His latest book is *Character and the Individual Personality in English Renaissance Drama: Tragedy, History, Tragicomedy* (2014).

ANDREW ESCOBEDO is Professor of English at Ohio University and co-editor of the journal *Spenser Studies*. His most recent book, forthcoming in 2016, is *Volition's Face: Personification and the Will in Renaissance Literature*.

JAMIE FERGUSON is Associate Professor of English and Honors at the University of Houston. His first book, *Faith in the Language: Biblical Hermeneutics and Literary Language in the English Renaissance*, on the convergence of biblical hermeneutics and English literature from Tyndale to Donne, is in revision.

PAUL J. HECHT is an Associate Professor of English at Purdue University North Central. He is co-editor, with J. B. Lethbridge, of *Spenser in the Moment* (2015). He is completing a monograph on the Rosalinds of Spenser, Lodge, and Shakespeare.

THOMAS HERRON is Associate Professor of English at East Carolina University and editor of the journal *Explorations in Renaissance Culture*. He is author and editor of many works on Spenser and early modern Ireland as well as director of the website *Centering Spenser: a digital resource for Kilcolman Castle*.

MICHAEL HETHERINGTON is a fellow of St. John's College, Oxford, where he teaches English Literature 1550–1760. His research focuses on the relationship between the literary, pedagogical, and philosophical cultures of Renaissance England, with a special interest in logic and poetics; and he is currently preparing a monograph on the uses of the concept of coherence in early modern writing.

SARAH HOWE is currently a Fellow at Harvard University's Radcliffe Institute, before taking up a Leverhulme Early Career Fellowship at University College London in 2016. She is currently completing a book project called *The Mind's Eye in Renaissance English Literature*.

WILLIAM JUNKER is Assistant Professor of Catholic Studies at the University of St. Thomas, MN. His essays and reviews have appeared in *ELH*, *Shakespeare Quarterly*, *Modern Philology*, *The Journal of Religion & Literature*, and *Marginalia*, and he is writing a book on time, drama, and the Church of England.



WILLIAM KERWIN is an Associate Professor of English at the University of Missouri. His first book was *Beyond the Body: The Boundaries of Medicine and English Renaissance Drama*, and he is currently working on a study of English satiric poetry across the sixteenth century.

CLARE R. KINNEY is an Associate Professor of English at the University of Virginia. Along with her many publications on early modern literature, she has recently edited the *Ashgate Critical Essays on Women Writers in England, 1550–1700, Volume 4: Mary Wroth* (2009).

GREGORY KNEIDEL is an Associate Professor at the University of Connecticut and Associate Editor of the Variorum Edition of the Poetry of John Donne. His most recent book is *John Donne and Early Modern Legal Culture: The End of Equity in the Satyres* (2015).

MARY ELLEN LAMB is Professor Emeritus at Southern Illinois University. She is editor of the *Sidney Newsletter*. She is the author of *The Popular Culture of Shakespeare, Spenser, and Jonson* (2006).

KATHERINE C. LITTLE is Professor of English at the University of Colorado Boulder. She works on late medieval and sixteenth-century literature and is the author most recently of *Transforming Work: Early Modern Pastoral and Late Medieval Poetry* (2013).

BRIAN LOCKEY is Associate Professor of English Literature at St. John's University. His most recent book is *Early Modern Catholics, Royalists, and Cosmopolitans: English Transnationalism and the Christian Commonwealth* (2015).

WILLY MALEY is Professor of Renaissance Studies at the University of Glasgow. He is the author of *A Spenser Chronology* (1994) and *Salvaging Spenser: Colonialism, Culture and Identity* (1997), and is working on the history of Britain in Spenser and Milton.

RICHARD MCCABE is Professor of English Language and Literature at Oxford University and a Fellow of Merton College Oxford and the British Academy. His most recent book, forthcoming in 2016, is *"Ungainefull Arte": Poetry, Patronage and Print in the Early Modern Era*.

SUSANNAH BRIETZ MONTA is the Glynn Family Honors Associate Professor of English at the University of Notre Dame. Her books include *Martyrdom and Literature in Early Modern England* (Cambridge, 2005) and *Anthony Copley's A Fig for Fortune: A Catholic Reads The Faerie Queene* (2016).

JOE MOSHENSKA is Fellow and Lecturer in English at Trinity College, University of Cambridge. He is the author of *Feeling Pleasures: The Sense of Touch in Renaissance England* (2014).

WILLIAM A. ORAM is Helen Means Professor of English at Smith College and a co-editor of *Spenser Studies*. He is the coordinating editor of the *Yale Edition of the Shorter Poems of Edmund Spenser*, and author of *Edmund Spenser*, and articles on Spenser and other Renaissance writers.

ANNE LAKE PRESCOTT is the Helen Goodhart Altschul Professor of English Emerita at Barnard College. The author of *French Poets and the English Renaissance* and *Imagining Rabelais in Renaissance England* as well as co-editor of the Norton Critical Edition of Spenser, she is currently exploring views of history in early modern almanacs and writing on teaching Menippean satire.

SYRITHE PUGH, a Senior Lecturer at the University of Aberdeen, is the author of *Spenser and Ovid* (2005) and *Herrick, Fanshawe, and the Politics of Intertextuality: Classical Literature and Seventeenth-Century Royalism* (2010).

DAVID QUINT is Sterling Professor of Comparative Literature and English at Yale University. His most recent book is *Inside Paradise Lost* (2014).

BETH QUITSLUND is Associate Professor of English at Ohio University. She is the author of *The Reformation in Rhyme: Sternhold, Hopkins and the English Metrical Psalter, 1547–1603* (2008) and, with Nicholas Temperley, editor of *The Whole Book of Psalms: A Critical Edition of the Texts and Tunes* (forthcoming 2016).

AYESHA RAMACHANDRAN is Assistant Professor Comparative Literature at Yale University. She is the author of *The Worldmakers: Global Imagining in Early Modern Europe* (2015) and co-editor, with Melissa Sanchez, of *Spenser and the Human*, a special issue of the journal *Spenser Studies* (2016).

MELISSA E. SANCHEZ is an Associate Professor of English and Core Faculty of Gender, Women, and Sexuality Studies at the University of Pennsylvania. She is the author of *Erotic Subjects: The Sexuality of Politics in Early Modern English Literature* (2011). More recently, she has co-edited three volumes of essays: *Rethinking Feminism in Early Modern Studies: Gender, Race, and Sexuality* (with Ania Loomba); *Spenser*

and "the Human," a special volume of *Spenser Studies* (with Ayesha Ramachandran); and *Desiring History and Historicizing Desire*, a special volume of *JEMCS* (with Ari Friedlander and Will Stockton).

PHILIP SCHWYZER is Professor of Renaissance Literature at the University of Exeter. His most recent book is *Shakespeare and the Remains of Richard III* (2013); he is currently preparing a new edition of Michael Drayton's *Poly-Olbion*.

CATHY SHRANK is Professor of Tudor and Renaissance Literature at the University of Sheffield. She is the author of *Writing the Nation in Reformation England, 1530–1580* (2004) and co-editor of *The Oxford Handbook of Tudor Literature, 1485–1603* (2009).

GORDON TESKEY, Professor of English at Harvard University, has written frequently on Spenser and on allegory, especially in *Allegory and Violence* (1996). He is editor of *The Norton Edition of "Paradise Lost."* His most recent book is *The Poetry of John Milton* (2015).

ANDREW WALLACE is an Associate Professor at Carleton University. He is the author of *Virgil's Schoolboys: The Poetics of Pedagogy in Renaissance England*, and he is completing a book on Roman Britain.

DAVID SCOTT WILSON-OKAMURA is the author of *Virgil in the Renaissance* (2010) and *Spenser's International Style* (2013).

JULIAN YATES is Professor of English and Material Culture Studies at University of Delaware. He is the author or editor of four books: *Error, Misuse, Failure: Object Lessons from the English Renaissance* (2003), which was a finalist for the MLA Best First Book Prize; *What's the Worst Thing You Can Do to Shakespeare?* (2013), co-authored with Richard Burt; *Object-Oriented Environs* (2015), co-edited with Jeffrey Jerome Cohen; and *The Multispecies Impression*, which will appear in 2016.

ANDREW ZURCHER is Fellow and Director of Studies in English at Queens' College, Cambridge. With Christopher Burlinson, he has recently published an edition of Ralph Knevet's *Supplement of the Faery Queen* (1635), and is now collaborating on a new collected works of Spenser.

## *Note on Editions Used*

Unless otherwise indicated, the chapters in this volume quote from the following editions:

*The Faerie Queene*. Ed. A. C. Hamilton. Text ed. Hiroshi Yamashita and Toshiyuki Suzuki. London and New York: Longman, 2001.

*Selected Letters and Other Papers*. Ed. Christopher Burlinson and Andrew Zurcher. Oxford: Oxford University Press, 2009.

*Spenser's Prose Works*. Ed. Rudolf Gottfried. *Variorum Edition*, vol. 9. Baltimore, MD: Johns Hopkins Press, 1949.

*Spenser: The Shorter Poems*. Ed. Richard A. McCabe. Harmondsworth: Penguin, 1999.

*A View of the Present State of Ireland*. Ed. Andrew Hadfield and Willy Maley. Oxford: Blackwell, 1997.

*The Works of Edmund Spenser: A Variorum Edition*. Ed. Edwin Greenlaw et al., 11 vols. Baltimore, MD: Johns Hopkins Press, 1932–57.

*The Yale Edition of the Shorter Poems of Edmund Spenser*. Ed. William Oram et al. New Haven, CT: Yale University Press, 1989.

## *Chronology*

Date	Spenser's life and works	Other events
1552-54	Edmund Spenser born, probably in London.	
1561	Enters Merchant Taylors' School as "poor scholar."	
1565		Sir Henry Sidney appointed Lord Deputy of Ireland.
1569	Anonymously publishes "Visions of Petrarch" and "Visions of du Bellay" in Jan van der Noot's <i>A Theater for Worldlings</i> . Admitted to Pembroke Hall at Cambridge as sizar (a poor scholar with servant's duties).	
1570		Papal Bull excommunicates Elizabeth.
1572		St. Bartholomew's Day massacre.
1576	Graduates with MA.	Archbishop Grindal censured for refusing to suppress "prophesying."

- 1577-79    Whereabouts uncertain. Possibly in Ireland: in 1577 recorded delivering letters to Earl of Leicester from William Drury, president of Munster. In 1578 presents Gabriel Harvey in London with four "foolish bookes." In 1579 writes letters to Harvey from Leicester House and from Westminster.  
*Mother Hubberds Tale* probably circulates in manuscript, perhaps angering Lord Burghley.
- 1579    Marries Maccabaeus Childe, with whom he has two children. Publishes *The Shepheardes Calender* anonymously.
- 1580    Publishes, with Harvey, *Three Proper, and Wittie, Familiar Letters*, in which Harvey mentions "The Faerye Queene."  
 Appointed secretary to Lord Grey de Wilton, Lord Deputy of Ireland. May have been present during the massacre of six hundred Spanish and Italian troops at Smerwick.
- 1582    Lord Grey recalled.
- 1583    Spenser's friend  
       Lodowick  
       Bryskett installed as clerk of the council of Munster.
- 1586    Acquires Kilcolman estate in County Cork.    Sir Philip Sidney dies fighting in the Netherlands.
- 1587    Execution of Mary, Queen of Scots.

- 1588 Property disputes with Lord Roche begin. Spanish Armada.
- 1590 Travels to London with Sir Walter Raleigh to oversee publication of *The Faerie Queene* (Books I–III).
- 1591 Elizabeth grants Spenser life pension of £50 a year.  
*Complaints* published under direction of William Ponsonby.  
 The collection “called in” by authorities due to satire of Burley in *MHT*.  
 May have drafted *Colin Clouts Come Home Againe*.
- 1592 *Daphnaïda* published.  
*Axiochus* published.
- 1593 Henry IV of France (Bourbon) renounces Protestantism.
- 1594 Marries Elizabeth Boyle, with whom he has one child.
- 1595 *Amoretti* and *Epithalamion* published as a single volume.  
*Colin Clouts Come Home Againe* published, along with *Astrophel*.
- 1596 Second edition of *The Faerie Queene* (Books I–VI) published.  
*Fowre Hymnes* and *Daphnaïda* (second edition) published in same volume.  
*Prothalamion* published.  
 Probably finishes *A View of the Present State of Ireland*.
- 1598 Kilcolman estate overrun by Irish rebels; Spenser and family escape through underground tunnel.  
 Delivers letters from Thomas Norris (president of Munster) to the privy council in December. Tyrone’s rebellion in Ireland.

- 1599 Dies on January 13 in Westminster.
- 1609 First folio edition of *The Faerie  
Queene* published, with *Two  
Cantos of Mutabilitie* included.
- 1633 *A View of the Present State of Ireland*  
published in James Ware's *Ancient  
Irish Chronicles*.



# Contents

<i>List of Illustrations</i>	page x
<i>Notes on Contributors</i>	xi
<i>Note on Editions Used</i>	xvi
<i>Chronology</i>	xvii
Introduction	I
<i>Andrew Escobedo</i>	
PART I SPENSER'S ENVIRONMENT	5
1 Pedagogy, Education, and Early Career	7
<i>Andrew Wallace</i>	
2 Laureate Career-Fashioning	14
<i>William A. Oram</i>	
3 Patrons	23
<i>Richard McCabe</i>	
4 Church Controversy	33
<i>Gregory Kneidel</i>	
5 Figures of Elizabeth	42
<i>Anna Riehl Bertolet</i>	
6 Publication and the Book Marketplace	53
<i>Andrew Zurcher</i>	
7 Colonialism and the New World	63
<i>Brian Lockey</i>	
8 Colonialism and Irish Plantation	72
<i>Thomas Herron</i>	