

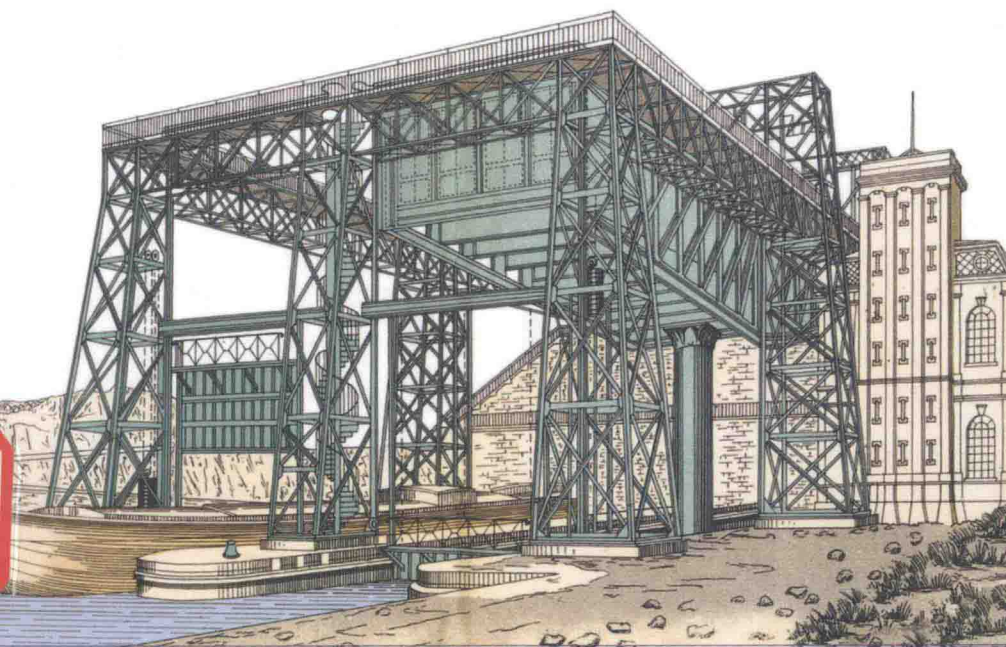
CAMBRIDGE LIBRARY COLLECTION

RIVERS AND CANALS

WITH STATISTICS OF THE TRAFFIC
ON INLAND WATERWAYS

VOLUME 2: CANALS

LEVESON FRANCIS VERNON-HARCOURT



CAMBRIDGE

Rivers and Canals

*With Statistics of the Traffic
on Inland Waterways*

VOLUME 2: CANALS

LEVESON FRANCIS VERNON-HARCOURT



CAMBRIDGE
UNIVERSITY PRESS

CAMBRIDGE UNIVERSITY PRESS

University Printing House, Cambridge, CB2 8BS, United Kingdom

Cambridge University Press is part of the University of Cambridge.
It furthers the University's mission by disseminating knowledge in the pursuit of
education, learning and research at the highest international levels of excellence.

www.cambridge.org

Information on this title: www.cambridge.org/9781108080606

© in this compilation Cambridge University Press 2015

This edition first published 1896

This digitally printed version 2015

ISBN 978-1-108-08060-6 Paperback

This book reproduces the text of the original edition. The content and language reflect
the beliefs, practices and terminology of their time, and have not been updated.

Cambridge University Press wishes to make clear that the book, unless originally published
by Cambridge, is not being republished by, in association or collaboration with,
or with the endorsement or approval of, the original publisher or its successors in title.

The original edition of this book contains a number of colour plates,
which have been reproduced in black and white. Colour versions of these
images can be found online at www.cambridge.org/9781108080606

CAMBRIDGE LIBRARY COLLECTION

Books of enduring scholarly value

Technology

The focus of this series is engineering, broadly construed. It covers technological innovation from a range of periods and cultures, but centres on the technological achievements of the industrial era in the West, particularly in the nineteenth century, as understood by their contemporaries. Infrastructure is one major focus, covering the building of railways and canals, bridges and tunnels, land drainage, the laying of submarine cables, and the construction of docks and lighthouses. Other key topics include developments in industrial and manufacturing fields such as mining technology, the production of iron and steel, the use of steam power, and chemical processes such as photography and textile dyes.

Rivers and Canals

Leveson Francis Vernon-Harcourt (1839–1907) drew on a distinguished career in canal and river engineering for this illustrated two-volume survey, here reissued in its enlarged 1896 second edition. Having started as an assistant to the civil engineer John Hawkshaw, Vernon-Harcourt was appointed resident engineer in 1866 for new works on London's East and West India docks. Later, as a consulting engineer, he specialised in the design and construction of harbours, docks, canals and river works, and he was elected professor of civil engineering at University College London in 1882. This publication covers the design and construction of tidal and flood defences, canals, locks, and irrigation works. Volume 2 covers canal engineering, discussing the design and construction of canals and their associated works such as locks and lifts. Vernon-Harcourt also discusses ship canals and irrigation works. His *Harbours and Docks* (1885) is also reissued in this series.

Cambridge University Press has long been a pioneer in the reissuing of out-of-print titles from its own backlist, producing digital reprints of books that are still sought after by scholars and students but could not be reprinted economically using traditional technology. The Cambridge Library Collection extends this activity to a wider range of books which are still of importance to researchers and professionals, either for the source material they contain, or as landmarks in the history of their academic discipline.

Drawing from the world-renowned collections in the Cambridge University Library and other partner libraries, and guided by the advice of experts in each subject area, Cambridge University Press is using state-of-the-art scanning machines in its own Printing House to capture the content of each book selected for inclusion. The files are processed to give a consistently clear, crisp image, and the books finished to the high quality standard for which the Press is recognised around the world. The latest print-on-demand technology ensures that the books will remain available indefinitely, and that orders for single or multiple copies can quickly be supplied.

The Cambridge Library Collection brings back to life books of enduring scholarly value (including out-of-copyright works originally issued by other publishers) across a wide range of disciplines in the humanities and social sciences and in science and technology.

RIVERS AND CANALS

VERNON-HARCOURT

VOL. II.

London

HENRY FROWDE

OXFORD UNIVERSITY PRESS WAREHOUSE

AMEN CORNER, E.C.



New York

MACMILLAN & CO., 66 FIFTH AVENUE

RIVERS AND CANALS

THE
FLOW, CONTROL, AND IMPROVEMENT OF RIVERS
AND THE
DESIGN, CONSTRUCTION, AND DEVELOPMENT OF CANALS
BOTH FOR NAVIGATION AND IRRIGATION

*WITH STATISTICS OF THE TRAFFIC
ON INLAND WATERWAYS*

BY
LEVESON FRANCIS VERNON-HARCOURT, M.A.

MEMBER OF THE INSTITUTION OF CIVIL ENGINEERS
AUTHOR OF 'HARBOURS AND DOCKS,' AND 'ACHIEVEMENTS IN ENGINEERING'

IN TWO VOLUMES.—VOL. II
CANALS

SECOND EDITION, RE-WRITTEN AND ENLARGED

Oxford
AT THE CLARENDON PRESS

1896

Oxford

PRINTED AT THE CLARENDON PRESS

BY HORACE HART, PRINTER TO THE UNIVERSITY

CONTENTS OF VOL. II



CHAPTER XV.

CANAL WORKS.

Objects of Canals. Drainage Canals: Purposes and Form. Irrigation Canals: Object, Sources of Supply, Value, Instances. Navigation Canals: Objects, Instances. Canals connecting Rivers: Various Examples. Lateral Canals: Uses, Instances, in place of Tidal Navigations, when preferable to Canalizing a River. Sizes of Canals for Navigation: Dimensions of various Inland Canals and Ship-Canals; Minimum Section in relation to Barges; Average Dimensions of Barges on British Inland Canals, and of Vessels on Main Lines of French Canals. Construction of Canals for Navigation: compared with Railways; Watertight Trench; Earthwork for Canals, Dredgers and Excavators for large Excavations, Protection of Slopes from Slips; Towing-Path. Bridges over Canals: similar to Railway Bridges. Swing-Bridges: Forms, Examples, Advantages of Steel in construction. Bascule Bridges: Description, Examples in Holland, Tower Bridge. Lift-Bridges: Method of Working, Examples. Aqueducts for Canals: Instances, Barton Swing Aqueduct. Tunnels for Canals: Examples in England and France. Waste Weirs, and Sluices. Stop-Gates. Supply of Water. Reservoirs: Instances in Great Britain, France, and Russia. Reservoir Dams: of Earth, of Masonry; Construction, and Auxiliary Works. Introduction of Supply of Water. Consumption of Water in Canals. Remarks on Canal Works	PAGE 343
---	-------------

CHAPTER XVI.

CANAL LOCKS.

Locks for surmounting Differences in Level on Canals. *Sizes of Canal Locks*:—Accommodation for Vessels, enlargement of Chamber, intermediate Gates, double Locks; Standard Dimensions, in Great Britain, in France, and in America. Enlargement of Sault-Sainte-Marie Canal Locks. Dimensions of Ship-Canal Locks. *Lifts and Flights of Locks*:—Instances in United Kingdom, and in France; Advantages of Flights; Reduction in Number of Locks, and Increase of Lifts, on Canal du Centre, on St. Denis Canal. Lock with Lift of 32½ feet, Description. Lifts of Ship-Canal Locks. *Reduction of Time in Locking*:—Deepening of Lock-Chamber,

and Longitudinal Sluice-Ways; Cylindrical Sluice-Gates, on River Weaver, and in France; Summary of Arrangements for Saving Time. <i>Saving Water in Locking</i> :—Side Ponds; Double Locks; Contrivances at Aulois Lock. Remarks on Canal Locks	PAGE 374
---	-------------

CHAPTER XVII.

CANAL INCLINES AND LIFTS.

Inclines, and Lifts substituted for Canal Locks. <i>Canal Inclines</i> :—Earliest in China; Rollers for Boats; reduce Cost of Works and Time of Transit, and save Water; General Form; Methods of conveying Barges on Inclines. Barges on Wheels; Bude Canal Inclines; Shropshire and Shrewsbury Canal Inclines; Morris Canal Inclines; Oberland Canal Inclines; Ourcq Canal Incline. Caissons containing Water, object; Chard Canal Inclines; Monkland Canal Incline; Georgetown Incline on Chesapeake and Ohio Canal. Ship-Railway proposed for connecting Atlantic and Pacific Oceans; Difficulties; Chignecto Ship-Railway constructed. <i>Canal Lifts</i> :—Compared with Inclines; Primitive Lifts on Worcester and Birmingham Canal, and on Grand Western Canal; counterbalancing caissons, lifting gates, worked by weight of water, saving of Time and Water, disuse. Anderton Hydraulic Canal Lift; object, description, working, saving of Time and Water compared to flights of locks, accident to press. Fontinettes Lift, object, resemblance to Anderton Lift, greater size, description, working, expenditure of water, cost, time of passage, settlement of press. La Louvière Lift; object, one of four proposed, similarity to Fontinettes Lift, larger dimensions, construction, weight moved, working and time of lift, cost, displacement of wall. Concluding Remarks on Inclines and Lifts	389
---	-----

CHAPTER XVIII.

IRRIGATION WORKS.

Objects of Irrigation. Sources of supply of Water. Economical aspects of Irrigation Works. Hydrology essential to Irrigation; Data required. Duty of Water for Irrigation. Tanks, in India, construction, loss of water, silting up. Wells, primitive methods of raising Water; supply limited. Reservoirs: instances in India, with heights of dams and capacities; Dams in Spain; proposed Assouan Reservoir; instances in South Africa and North America. Remarks on Irrigation Reservoirs. <i>Irrigation Canals</i> :—Four Classes; Canals from Reservoirs, instances. Inundation Canals, for conveying Water and Silt to the Irrigable Lands, facilitated by straight course and level of River-Bed; choice of Site for Head; measures for protection against Erosion of Banks and Silting near Head. Inundation Canals in Upper Egypt, importance; extent of Irrigation dependent on rise of Nile; Basin System. Inundation Canals in Punjab and Sind, Dimensions, Discharge during Floods; Difficulties occasioned by Silting and Changes in Channel of Indus. Remarks on Inundation Canals	415
--	-----

CHAPTER XIX.

PERENNIAL IRRIGATION CANALS.

PAGE:

Perennial Canals, drawing supplies from Rivers with a fair constant Discharge. Two classes of Perennial Canals, Upper and Deltaic. *Upper Perennial Canals*:—Works required; considerations affecting Design of Works; Head-Works, Weir across River, Sluices in Weir, Regulator at Head of Canal. Irrigation and Navigation combined, conflicting Interests. Perennial Canals in India: Western, and Eastern Jumna; Agra; Sirhind; Bari Doab; Sone; Ganges, and Lower Ganges. Canals in Northern Italy; supply derived from Tributaries of River Po; Piedmont Canals, extent, Caluso, Ivrea, Cigliano, Cavour Canal direct from the Po, description; Lombardy Canals, extent, Naviglio Grande, Muzza. Canals in South of France: supply from River Durance; Bouches du Rhône Canals, Craponne, Alpines, Marseilles for water-supply and irrigation; Verdon, difficulties, siphons; Vaucluse Canals, St. Julien, Cabedan vieux and neuf, Carpentras. Canals in Spain: commenced by the Moors, Jucar, from Rivers Segura and Douro, Aragon, Henares, Esla. Canals in the United States: recent works; Fresno, and Calloway, in California; Del Norte, and High Line, in Colorado; Arizona; Bear River, in Utah; Idaho; Turlock in California. Remarks on Upper Perennial Canals. Cost of several of the canals described. *Deltaic Perennial Canals*:—Situation; Head-works; small uniform Fall of Canals; Protection by Embankments from Inundation, disadvantages. Deltaic Canals in India; Orissa, Godavery, Kistna, and Cauvery; Extent, Cost, and Revenue. Canals in Lower Egypt, substituted for Basin Irrigation, Object, Disadvantages; Rosetta and Damietta Barrages, and other Improvements. Remarks on Deltaic Canals. Concluding Remarks on Irrigation . 432

CHAPTER XX.

INLAND NAVIGATION.

Importance of Inland Navigation in Continental Europe. Influence of Railways on Inland Waterways. Importance of Waterways penetrating far Inland; instances of large rivers. Conditions affecting Construction of Canals. Traffic on Inland Waterways dependent on Trade in Bulky Goods, examples in France and England. Canals connecting River Navigations, examples in flat country, also in hilly districts; Importance of favourable Conditions. Inland Navigation in relation to the Countries of Europe. *Inland Navigation in Great Britain*:—Development; Causes of Decline; Waterways with large Traffic, causes of success; Hindrances to Through Traffic; Aids to Inland Navigation, expedient methods; Lengths of Waterways in England, Scotland, and Ireland; Traffic Returns, incompleteness of, for England, Scotland, and Ireland. *Inland Navigation in France*:—Early Progress; Briare and Languedoc Canals; Extension of Canals; Progress since 1860, works, main routes rendered uniform; Lengths of French Waterways; Traffic, compared with Railway Traffic. *Inland Navigation in Holland*:—Natural Facilities; Principal Water-

	PAGE
ways; Lengths of Dutch Waterways; Control; Sizes, new Merwede Canal; Remarks. <i>Inland Navigation in Belgium</i> :—Natural Advantages; Principal Waterways, changes of level; Lengths of Belgian Waterways, Sizes; Traffic; nature and improvement; Traffic on Belgian Railways and Waterways compared. <i>Inland Navigation in Spain</i> :—Navigable Rivers; Castile and Aragon Canals. <i>Inland Navigation in Italy</i> :—Development, and Principal Waterways; Lengths and Sizes of Italian Waterways, Locks; Control; Traffic	467

CHAPTER XXI.

INLAND NAVIGATION (*continued*).

Conditions affecting Inland Navigation. <i>Inland Navigation in Sweden</i> :—Principal Waterways connecting Lakes; Traffic. <i>Inland Navigation in Germany</i> :—Navigable Rivers, lengths and depths, sizes of locks; Inland Canals, lengths, sizes of locks; Lengths of Waterways; Traffic on German Waterways. <i>Inland Navigation in Austria-Hungary</i> :—Austrian Waterways, lengths, traffic; Hungarian Navigable Rivers; Canals; Transport, sizes of vessels, and nature of trade; Traffic on Hungarian Waterways and Railways compared. <i>Inland Navigation in Russia</i> :—Navigable Rivers; Inland Canals connecting Rivers, Caspian connected with Baltic, Marie Navigation, Baltic connected with Black Sea, White Sea connected with Baltic and Caspian; Recent Works; Lengths of Russian Waterways; Traffic. <i>Inland Navigation in India</i> :—Limits; Navigable Rivers; Navigable Canals, combined with Irrigation, constructed for Navigation. <i>Inland Navigation in Canada</i> :—River St. Lawrence, and the Lakes; St. Lawrence Canals; Welland, Sault-Sainte-Marie, and other Canals; Depth of Canals, and Sizes of Locks; Traffic. <i>Inland Navigation in the United States</i> :—Lakes and Rivers; Mississippi and Tributaries; Hudson and minor Rivers; Erie, Champlain, Morris, Illinois and Michigan, and Chesapeake and Ohio Canals; Central and Southern Transportation Routes; St. Mary's Falls, and St. Clair Flats Canals; Hennepin Canal; Chicago Drainage Canal, objects and route; Sizes of Locks on Waterways; Sections of Canals; Traffic on State of New York Canals compared with Railways; Traffic on the principal Rivers of the United States. Concluding Remarks, control of rivers, and extension of navigation	502
---	-----

CHAPTER XXII.

FORMS OF BARGES; METHODS OF TRACTION; AND SHIP-CANALS
INSTEAD OF RIVERS.

Importance of Form of Barge, and Methods of Traction. <i>Forms of Barges</i> :—Dimensions of Barges dependent on size of Waterway; Causes of Resistance to Motion in Water; Spoon-shaped Ends for Barges advantageous in reducing Resistance. <i>Methods of Traction</i> :—Traction by horses still largely used; Steam Traction, tugs and cargo-carrying steamers; various instances of
--

their use, advantages; Haulage on a Submerged Chain, advantages in strong current and small depths, instances of system on rivers and on French canals, novel form on the Rhone, value of Magnetic Adhesion. Towing with Endless Chains, experimented with on the Rhone. Haulage by an Endless Travelling Wire Cable, description of system, difficulties to be overcome, instances of its trial, practical system designed by Mr. Lévy, estimated cost of traction, first practical application of system in Mont-de-Billy Tunnel. Electrical Towing, successful application on Bourgogne Canal. Towing by Aid of Grappling Wheels, used on the Rhone. Towing by Locomotives, employed in France, tried in Germany and England. Remarks on systems of Traction. *Classification of Ship-Canals*:—Lateral Ship-Canals; Ship-Canals to Ports; and Inter-oceanic Ship-Canals. References to first class of Ship-Canals. *Lateral Ship-Canals*:—Gloucester and Berkeley Ship-Canal, description, improvements proposed; Tidal Loire Ship-Canal, description; Tancarville Canal, conversion into Ship-Canal provided for; Ghent-Terneuzen Ship-Canal, early works for providing deep-water access to Ghent, description of earlier canal, conversion into a Ship-Canal, growth of traffic; St. Louis Ship-Canal, to avoid Rhone bar, description, traffic; St. Petersburg and Cronstadt Ship-Canal, in place of shallow outlet of the Neva, description, cost 539

CHAPTER XXIII.

SHIP-CANALS FOR PORTS.

Differences in Design. *North Holland Ship-Canal*:—Object; Description; Present Condition. *Amsterdam Ship-Canal*:—Early Scheme; Purpose, Advantages; Difficulties of Scheme, and Methods of overcoming them; Description of route, dimensions, execution; Communications, Bridges over Canal, Branch Canals; Zuider Zee Embankment and Locks, pumping machinery; Ymuiden Locks, New large Lock; Ymuiden Harbour, construction, shelter, and maintenance; Enlargement of Canal; Cost; Traffic. *Baltic Ship-Canal*:—Eider Canal; Course of Baltic Canal; Objects; Description, dimensions, slopes, embankments, widening at curves; Bridges over Canal; Sand Dams; Locks at each end, Lock communicating with Lower Eider; Lakes lowered; Completion and Cost; Remarks, shortening of routes to Baltic Ports; compared with Amsterdam Ship-Canal. *Manchester Ship-Canal*:—Communications with Mersey by Canals; Schemes proposed, course of scheme authorized; Description of Canal, locks, lengths and levels of reaches, section, water-supply, headway under Bridges; Excavations and Embankments, quantities of rock and soft soil; Locks, dimensions at Eastham, Latchford, Irlam, Barton, and Mode Wheel; Sluices; Sluices and Tidal Openings into Mersey Estuary; Bridges across Canal; Swing Aqueduct at Barton; Various Works, Siphons, Locks into the Estuary, Lift at Barton; Docks; Cost; Traffic; Remarks. *Bruges Ship-Canal*:—Object; Description; Remarks 560

CHAPTER XXIV.

INTEROCEANIC SHIP-CANALS.

PAGE

Ancient schemes for Isthmian Canals. Canal des Deux Mers; early canal, proposed enlargement. Caledonian Canal; Object, description, locks, cost, traffic. <i>Suez Canal</i> :—Levels of the Mediterranean and Red Seas; Preliminary Negotiations; Course across Isthmus; Description; Excavation; Strata traversed, forced labour, mechanical appliances; Dredging Plant; Fresh-water Canal, object, route, dimensions; Port Said Harbour; breakwaters, advance of foreshore; Approach to Suez; Opening of Canal; Cost; Currents through Canal; Traffic; Navigation by night, reducing time of Transit; Widening and deepening of the Canal, schemes, enlarged widths adopted, depth, estimated cost, works in progress, improved draught of vessels; Remarks on the Suez Canal. <i>Corinth Canal</i> :—Early proposals; Commencement by Nero; Objects; Description, dimensions of Canal, Harbours at entrances, Bridge over Canal; Construction, methods of excavation, geological nature of soil, flattening of slopes, lining sides; Increase in Cost, and Prolongation of Time; Stoppage of Works; Completion; Cost; Navigation; Traffic; Remarks. <i>Perekop Canal</i> :—Object; Dimensions; Advantages	596
--	-----

CHAPTER XXV.

INTEROCEANIC SHIP-CANALS (*continued*).

Importance of severing the Barrier formed by the Isthmus of Panama. Routes proposed for Canals across the Isthmus of Panama—Nicaragua, Panama, San Blas, Atrato, Tehuantepec Ship-Railway. <i>Panama Canal</i> :—Preferred to other schemes; Route, and estimated Cost; Description, Dimensions of Canal, cuttings, approaches, provisions for Floods of river Chagres; Excavation, increased amount, nature of Strata; Progress of Works, Contract, increased Cost, state in 1887; Introduction of Locks to reduce Excavation; Stoppage of Works, estimated Cost of Completion, Schemes proposed; Remarks. <i>Nicaragua Canal</i> :—Preferred by Americans; Line selected, general course, length; Dimensions of Canal and Locks, lifts of Locks; Excavation, nature of Strata; Estimated Period of Construction, and Cost; Commencement of Works; Stoppage; Remarks. <i>Comparison of Panama and Nicaragua Canals</i> :—Relative Advantages and Disadvantages; Problems involved; Future Prospects, possible Intervention of United States Government. <i>Various Schemes for Ship-Canals</i> :—Minor Importance; Isthmian Ship-Canal Schemes; Ship-Canals proposed for Inland Cities; Concluding Remarks	623
INDEX	653

LIST OF ILLUSTRATIONS IN VOL. II



CANALS.

PLATE XI.

CANAL WORKS AND SECTIONS.

CANAL WORKS.

- Locks on the St. Denis Canal, France. Plan and Sections.—Lock-Gates. Elevation and Section.
Lock on the Scheldt and Meuse Canal. Plan and Sections.
Georgetown Incline, United States. Elevation and Section.
La Louvière Lift, Belgium.

CANAL SECTIONS.

- Inland Canals. Monkland.—Wilts and Berks.—Grand Junction.—Glasgow and Paisley.—Forth and Clyde.—Marne and Rhine.
Ship-Canals. Gloucester and Berkeley.—Caledonian.—Manchester.—Tancarville.—Terneuzen.—North Holland.—Amsterdam, through Sand Hills and through Lakes, original and enlarged.—Baltic, in High, and Low Ground.—Panama, in Earth, and in Rock.—Corinth.—Nicaragua, in Earth, and in Rock.—Suez, original, and enlarged.

PLATE XII.

SHIP-CANALS FOR PORTS.

- Amsterdam Ship-Canal. Plan and Longitudinal Section.—Ymuiden and Zuider Zee Locks. Plans.—Ymuiden Breakwaters. Section.—Zuider Zee Embankment. Section.
Manchester Ship-Canal. Plan and Longitudinal Section.—Eastham Locks. Plan.—Latchford Locks and Sluices. Plan and Section.
Baltic Canal. Plan and Longitudinal Section.—Elbe Locks. Plan.—Kiel Locks. Plan.

PLATE XIII.

ISTHMIAN SHIP-CANALS.

Suez Canal. Plan and Longitudinal Section.—Port Said Breakwater. Section.

—Port Said Harbour. Plan.

Panama Canal. Plan and Longitudinal Section, original, and with Locks.

Corinth Canal. Plan and Longitudinal Section.

Nicaragua Canal. Plan and Longitudinal Section.

Central America. Routes of Canals and Ship-Railway.

ERRATA.

Page 349, line 16 from top, *for Gironde read Garonne.*

„ „ 17 from bottom, *for Gironde into the Garonne read Garonne into the Gironde.*

„ 363 „ 15 from top, *for Burgogne read Bourgogne.*

„ 366 „ 5 from bottom, *for Burgogne read Bourgogne.*

„ 550 „ 14 from top, *for two read three.*

„ 621 „ 4 from bottom, *for Azov read Azof.*

„ 622 „ 3 from top, *for Azov read Azof.*

„ 625 „ 1 from bottom, *for Columbian read Colombian.*

„ 630 „ 16 from bottom, *for Four read Five.*